



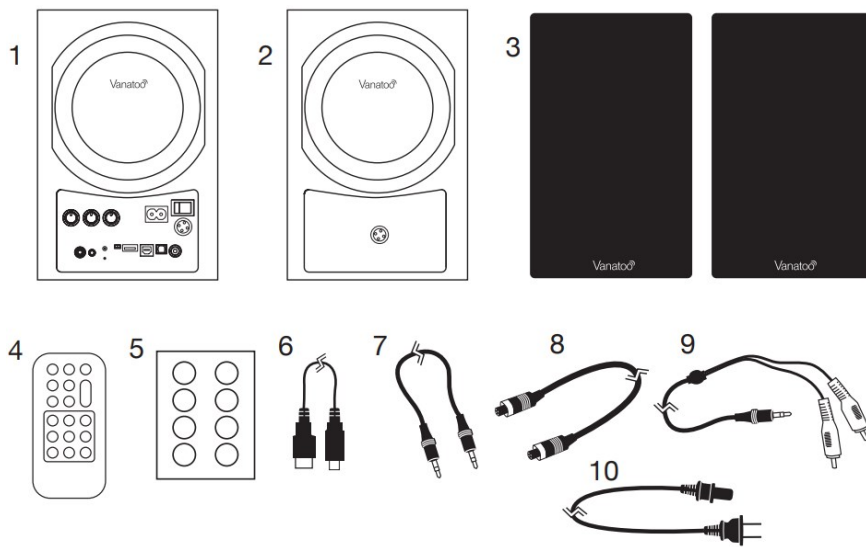
# Vanatoo Transparent One Encore Powered Bluetooth Speaker User Guide

[Home](#) » [Vanatoo](#) » Vanatoo Transparent One Encore Powered Bluetooth Speaker User Guide 

## Vanatoo Transparent One Encore Powered Bluetooth Speaker User Guide

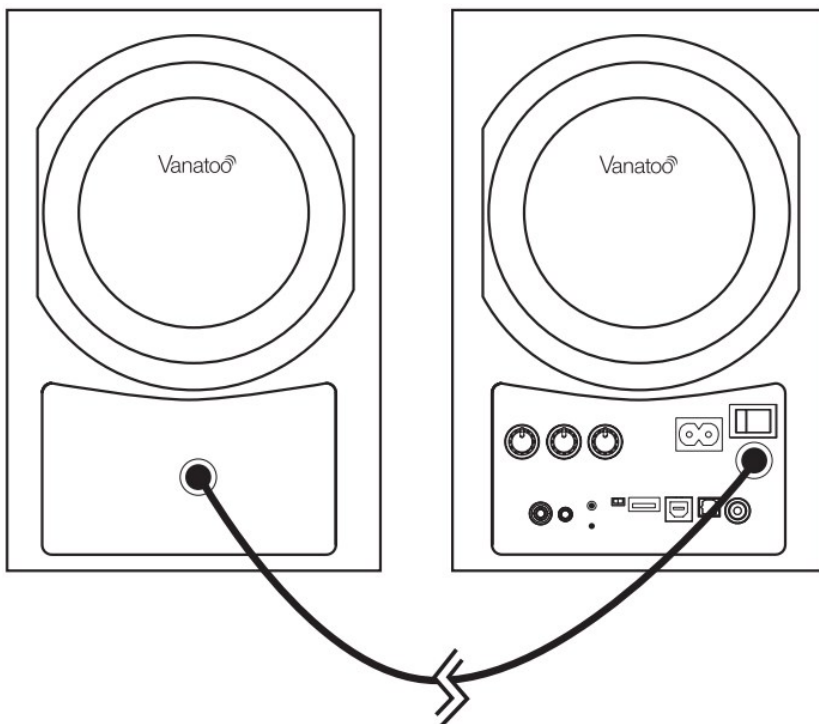


### Unpack Your System



1. Active speaker
2. Passive speaker
3. 2 Grills
4. IR remote control
5. Optional isolation feet
6. USB A to USB B cable
7. 3.5 mm to 3.5 mm cable
8. Four conductor speaker wire
9. 3.5 mm to RCA "Y" cable
10. AC power cord
11. Quick Start Guide and a Safety Sheet

### Connect the Speakers



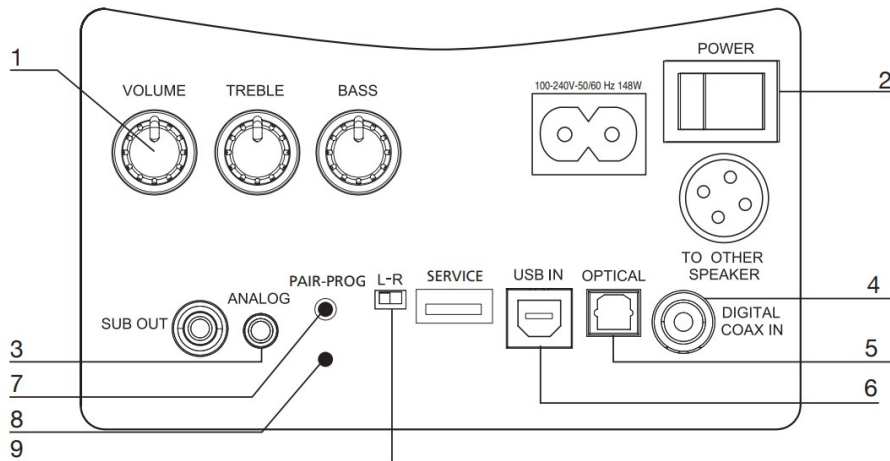
The included speaker interconnect cable with screw-on collar connectors makes this quick and easy.

## Connect Power

1. Make sure the power switch (2) is in the OFF position.
2. Plug the AC power cord into the active speaker.
3. Plug the AC power cord into the power outlet.

## Connect Your Audio Source

Turn the volume controls on the speaker (1) and on the audio source both to minimum.

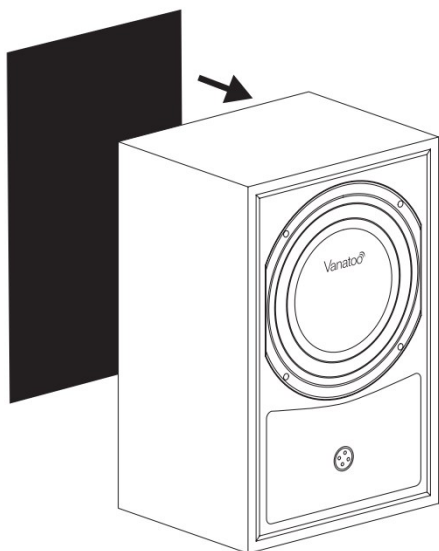


1. Analog (3) — Connect your source using the included using 3.5mm to 3.5mm cable or 3.5mm to RCA cable as appropriate for your source component.
2. Digital Coax (4) — Connect your source component using a 75 ohm digital coaxial RCA cable.
3. Optical (5) — Connect your source component to the Vanatoo T1E Plus using a Toslink optical cable.
4. USB (6) — Connect your computer to the T1E Plus using the supplied USB A to USB B cable. Select the Vanatoo T1E Plus in your computer's audio settings.
5. Bluetooth —
  - a. Press and release the “Pair-Prog” button (7) on the rear of the active speaker, or press “Enable” and then “BT Pair” on the remote control. The bluetooth interface will remain in pair mode for 2 minutes.
  - b. Ensure Bluetooth is turned-on on your source device and pair with the Vanatoo T1E Plus.
  - c. Ensure your source device is connected to the Vanatoo T1E Plus over Bluetooth and play music!

## Designate Left-Right speaker

Set the Left-Right switch (9) to designate whether the active speaker is located to your right or left (as you face the speakers). This ensures the music is recreated as it was recorded.

## Install the Grills



Grills come in individual plastic bags. Simple magnetic mounting (no or little alignment necessary). Can go either way such that the “Vanatoo” logo is upright on the bottom.

### Listen to Music!

Turn the power switch to the ON position (2). The blue LED (8) will light up within 5 seconds to indicate power to the unit. In most applications you can set the T1E Plus volume control to 100% and adjust the volume up/down from your source (Computer, Bluetooth device, etc).

### Remote Control

The included IR Remote Control is especially handy when your T1E Plus is used with a TV, or for switching sources, adjusting bass and treble, etc. Note that you must hit the “Enable” button to enable the other buttons inside the rectangular box for 15 seconds.

### Optional Settings

The T1E Plus has a lot of setup options, such as enabling the speakers to play mono, disabling sleep mode, varying the LED brightness, connecting a subwoofer and alternate bass profiles for room placement. Go to [www.vanatoo.com/support/downloads](http://www.vanatoo.com/support/downloads) to download the user manual for a full description of the T1E Plus and its setup options.

CONGRATULATIONS!! That’s it! We hope you enjoy your Vanatoo Transparent One Encore Plus powered speakers. For additional setup up information, connectivity options, and the troubleshooting guide, check out the Transparent One Encore Plus Owner’s Guide or visit us at [www.vanatoo.com](http://www.vanatoo.com).


Contact Us

Email: [support@vanatoo.com](mailto:support@vanatoo.com)

#### Contents

- [1 SAFETY PRECAUTIONS](#)
- [2 FCC STATEMENTS](#)
- [3 Documents / Resources](#)
- [4 Related Posts](#)

## SAFETY PRECAUTIONS

1.  This lightning flash with arrowhead symbol within an equilateral triangle is intended to alert the user to

the presence of uninsulated “dangerous voltage” within the product’s enclosure that may be of sufficient magnitude to constitute a risk of electric shock to persons.



The exclamation point, within an equilateral triangle, is intended to alert the user to the presence of important operating and maintenance (servicing) instructions in the literature accompanying the product.

2. To prevent risk of fire or electric shock, avoid overloading the wall outlet, extension cords.
3. **WARNING:** To reduce the risk of fire or electric shock, do not expose this apparatus to rain or moisture. The apparatus shall not be exposed to dripping or splashing and that objects filled with liquids, such as vases, shall not be placed on apparatus.
4. Read these instructions.
5. Keep these instructions.
6. Heed all warnings.
7. Follow all instructions.
8. Do not use this apparatus near water.
9. Clean only with dry cloth.
10. Do not block any ventilation openings. Install in accordance with the manufacturer’s instructions.
11. Do not install near any heat sources such as radiators, heat registers, stoves, or other apparatus (including amplifiers) that produce heat.
12. Do not defeat the safety purpose of the polarized or grounding plug. A polarized plug has two blades with one wider than the other. A grounding plug has two blades and a third grounding prong. The wide blade or the third prong is provided for your safety. If the provided plug does not fit into your outlet, consult an electrician for replacement of the obsolete outlet.
13. Protect the power cord from being walked on or pinched particularly at the plugs, convenience receptacles, and at the point where they exit from the apparatus.
14. Use only attachments/accessories specified by the manufacturer.
15. Use only with the cart, stand, tripod, bracket, or table specified by the manufacturer, or sold with the apparatus. When a cart or rack is used, use caution when moving the cart/apparatus combination to avoid injury from tip-over.
16. Unplug the apparatus during lightning storms or when unused for long periods of time.
17. Refer all servicing to qualified personnel. Servicing is required when the apparatus has been damaged in any way, such as when power supply cord or plug is damaged, when liquid has been spilled or objects have fallen into the apparatus, or when the apparatus has been exposed to rain or moisture, does not operate normally, or has been dropped.
18. **WARNING:** The mains plug/appliance coupler is used as the disconnect device. The disconnect device shall remain readily operable.
19. The woofer cone and tweeter dome are fragile. Do not touch.
20. This equipment is a Class II or double insulated electrical appliance. It has been designed in such a way that it does not require a safety connection to electrical earth.
21. Battery Notice:
  - a) Danger of explosion if battery is incorrectly replaced. Replace only with the same or equivalent type.
  - b) Do not ingest the battery, Chemical Burn Hazard.
  - c) The remote control supplied with the product contains a Lithium coin/button cell battery. If the coin/button cell battery is swallowed, it can cause severe internal burns in just 2 hours and can lead to death.
  - d) Keep new and used batteries away from children.

- e) If the battery compartment does not close securely, stop using the product and keep it away from children.
- f) If you think the battery might have been swallowed or placed inside any part of the body, seek immediate medical attention.
- g) The battery shall not be exposed to excessive heat such as sunshine, fire or the like.
- h) Do not handle leaking or damaged Lithium batteries.
- i) Risks of leakage. Only use the specified type of battery. Observe correct polarity. Remove the battery from a product that are not in use for an extended period of time. Store batteries in a dry place.
- j) Do not recharge non-rechargeable batteries.
- k) Avoid exposure to extreme heat or cold.
- l) This product contains a Lithium coin cell battery. If misused or abused this can result in:
  - Smoke or gas hazard
  - Heat hazard
  - Fire hazard
  - Explosion hazard

## **FCC STATEMENTS**

### **FCC EMC COMPLIANCE INFORMATION**

This device complies with Part 15 of the FCC Rules. Operation is subject to the following two conditions:

1. This device may not cause harmful interference, and
2. This device must accept any interference received, including interference that may cause undesired operation.

**NOTE:** This equipment has been tested and found to comply with the limits for a Class B digital device, pursuant to part 15 of the FCC Rules. These limits are designed to provide reasonable protection against harmful interference in a residential installation. This equipment generates, uses and can radiate radio frequency energy and, if not installed and used in accordance with the instructions, may cause harmful interference to radio communications. However, there is no guarantee that interference will not occur in a particular installation. If this equipment does cause harmful interference to radio or television reception, which can be determined by turning the equipment off and on, the user is encouraged to try to correct the interference by one or more of the following measures:

- Reorient or relocate the receiving antenna.
- Increase the separation between the equipment and receiver.
- Connect the equipment into an outlet on a circuit different from that to which the receiver is connected.
- Consult the dealer or an experienced radio/TV technician for help.

Approved under the verification provision of FCC Part 15 as a Class B Digital Device. Caution: Changes or modifications not expressly approved by the manufacturer could void the user's authority to operate this device.

### **FCC WIRELESS TRANSMITTER COMPLIANCE INFORMATION**

Radiation Exposure Statement:

This equipment complies with FCC radiation exposure limits set forth for an uncontrolled environment. This equipment should be installed and operated with minimum distance 20cm between the radiator & your body

### **CANADA, INNOVATION, SCIENCE AND ECONOMIC DEVELOPMENT CANADA (ISED) NOTICES**

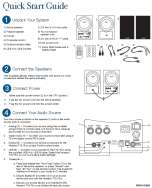
This device contains licence-exempt transmitter(s)/receiver(s) that comply with Innovation, Science and Economic Development Canada's licence-exempt RSS(s). Operation is subject to the following two conditions:

- 1. This device may not cause interference.
- 2. This device must accept any interference, including interference that may cause undesired operation of the device.

**RADIO FREQUENCY (RF) EXPOSURE INFORMATION**

The radiated output power of the Wireless Device is below the Innovation, Science and Economic Development Canada (ISED) radio frequency exposure limits. The Wireless Device should be used in such a manner such that the potential for human contact during normal operation is minimized. This device has also been evaluated and shown compliant with the ISED RF Exposure limits under mobile exposure conditions. (antennas are greater than 20cm from a person's body).

**Documents / Resources**

	<p><a href="#">Vanatoo Transparent One Encore Powered Bluetooth Speaker</a> [pdf] User Guide 2AJAAT1EP, T1EP, Transparent One Encore Powered Bluetooth Speaker, One Encore Powered Bluetooth Speaker, Powered Bluetooth Speaker, Bluetooth Speaker, Speaker</p>
---	---