

VALUE

CAB10-01 Mobile
and Open Cabinet



VALUE CAB10-01 Mobile and Open Cabinet Instruction Manual

[Home](#) » [VALUE](#) » VALUE CAB10-01 Mobile and Open Cabinet Instruction Manual 

Contents

- [1 VALUE CAB10-01 Mobile and Open Cabinet](#)
- [2 Specifications](#)
- [3 Components](#)
- [4 Assembly Instructions](#)
- [5 INSTRUCTIONS OF SAFETY AND WARNINGS:](#)
- [6 Documents / Resources](#)
 - [6.1 References](#)

VALUE

VALUE CAB10-01 Mobile and Open Cabinet



Specifications

Component	Quantity	Description
A	1	Cabinet Body
B	4	Casters
C	1	Wrench (14mm)

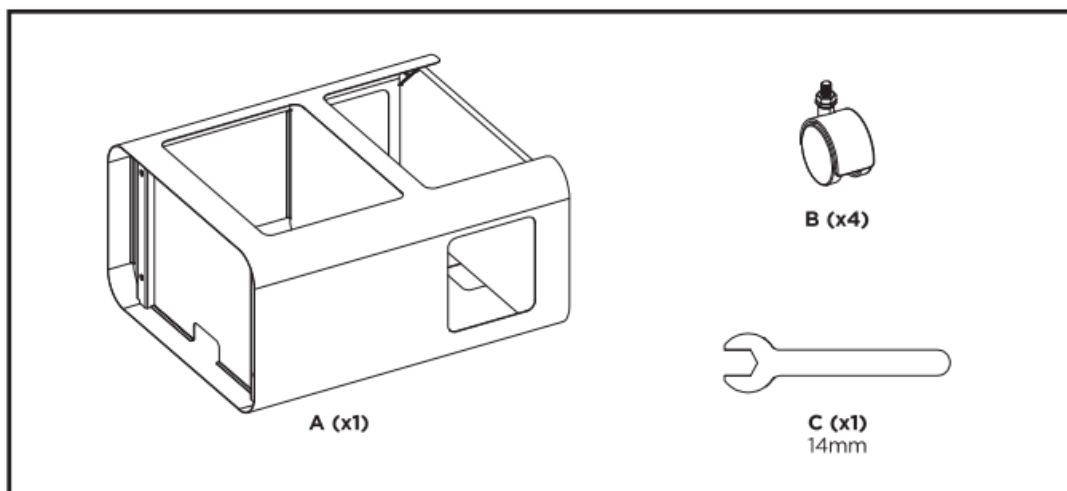
Components

- A (x1) – Cabinet Body
- B (x4) – Casters
- C (x1) – Wrench (14mm)

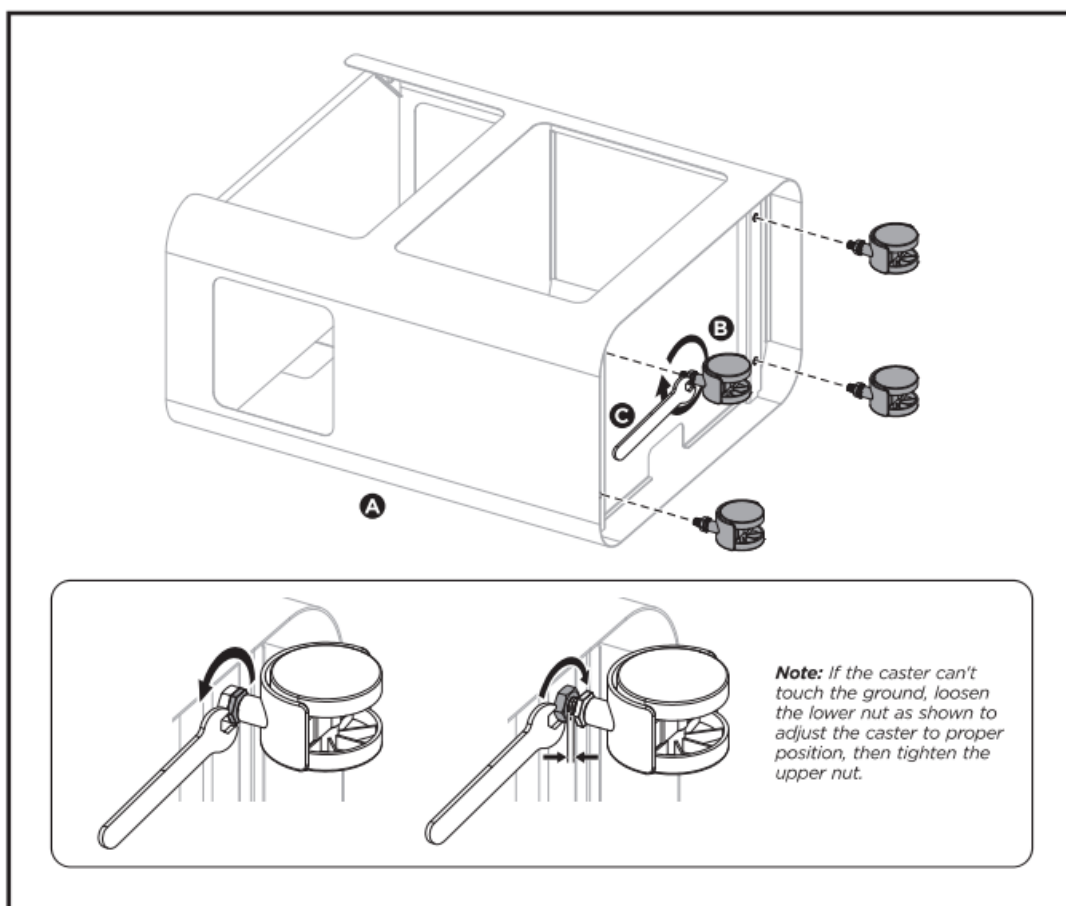
Assembly Instructions

To assemble the mobile cabinet, follow these steps:

1. Identify the cabinet body (A) and place it on a flat surface.



2. Attach the casters (B) to the bottom of the cabinet using the wrench (C).
3. Ensure each caster is securely tightened.



Note

If the caster can't touch the ground, loosen the lower nut as shown to adjust the caster to the proper position, then tighten the upper nut.

IMPORTANT:

Failure to read, thoroughly understand, and follow all instructions can result in serious personal injury, damage to equipment, or voiding of the factory warranty

INSTRUCTIONS OF SAFETY AND WARNINGS:

- Make sure that the mounting surface is strong enough to handle a mounted product and equipment.
- DO NOT EXCEED THE MAXIMUM LISTED WEIGHT CAPACITY.
- Always use an assistant or a mechanical lifting device to safely lift and position heavy products.
- Tighten screws firmly, but do not over-tighten. Over-tightening can cause product damage that greatly reduces the holding power.
- Keep a clear area and distance from moving parts when using the product.
- Do not use this product for any purpose not explicitly specified by the manufacturer.
- This product is intended for indoor use only.
- Any attempts to reconstruct the construction aren't allowed.
- This product may contain small items that could be a choking hazard if swallowed. Keep children away unless the product is intended for their use and all instructions and manuals are fully reviewed and understood by them.
- Check that the product is secure and safe to use at regular intervals (at least every three months).
- Should you ever have any questions or feel you require help please contact your place of purchase for assistance.

What should I do if the casters are not touching the ground?

Loosen the lower nut to adjust the caster to the proper position, then tighten the upper nut.

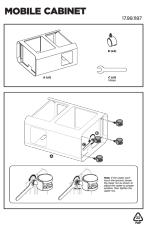
How often should I check the cabinet for security?

Check the cabinet at regular intervals, at least every three months, to ensure it is secure

Can I use this cabinet for purposes other than specified?

No, use the cabinet only for the purposes explicitly specified by the manufacturer.

Documents / Resources

	<p>VALUE CAB10-01 Mobile and Open Cabinet [pdf] Instruction Manual CAB10-01, CAB10-01 Mobile and Open Cabinet, Mobile and Open Cabinet, Open Cabinet, Cabinet</p>
---	---

References

- [User Manual](#)

[Manuals+](#), [Privacy Policy](#)

This website is an independent publication and is neither affiliated with nor endorsed by any of the trademark owners. The "Bluetooth®" word mark and logos are registered trademarks owned by Bluetooth SIG, Inc. The "Wi-Fi®" word mark and logos are registered trademarks owned by the Wi-Fi Alliance. Any use of these marks on this website does not imply any affiliation with or endorsement.