

**Contents** [ [hide](#) ]

- [1 VACON NX OPTBC Resolver Board](#)
- [2 RESOLVER OPTION BOARD OPT-BC](#)
- [3 CONFIGURATION](#)
- [4 INSTALLATION](#)
- [5 DIAGNOSTICS AND TROUBLESHOOTING](#)
- [6 Documents / Resources](#)
  - [6.1 References](#)
- [7 Related Posts](#)

# VACON®

## VACON NX OPTBC Resolver Board



## RESOLVER OPTION BOARD OPT-BC

This manual is valid for board versions VB00339i or later. The Resolver option board OPT-BC provides the user with an interface to use resolvers as feedback device to the VACON® NXP Drive. The interface provides speed and position data. The OPT-BC

includes also encoder simulation output (HTL level) and secondary encoder input (HTL-level).

### Note about absolute angle and different HW and SW versions

Due to differences in hardware and software, the angle given by OPTBC resolver board to application can differ by 180 degrees in the same system. When replacing OPTBC resolver option board in existing installations, care must be taken that angle value does not change accidentally. To prevent this, it is recommended that encoder ID run is always executed when replacing OPTBC resolver option boards in existing installations. This will automatically correct the possible 180 degrees difference that might be induced when replacing OPTBC option board.

Following table shows which OPTBC resolver hardware and software combinations are compatible. For example, if you replace OPTBC with HW version G and software version V005 with OPTBC with hardware version K and software version V013 the angle does not change by 180 degrees. In this case, encoder ID run is not needed but still recommended.

HW & SW version	HW: G or prior, SW V005 or prior	HW: H or later, SW: V010, V011, V012	HW: H or later, SW: V013
HW: G or prior, SW: V005 or prior		x	✓
HW: H or later, SW: V010, V011, V012	x		x
HW: H or later, SW: V013	✓	x	

x = Angles differ by 180 degrees

✓ = Angles are the same

Not performing encoder ID run after replacing OPTBC resolver option board prior to any other use of the AC drive may result in severe harm or injury to equipment and/or persons.

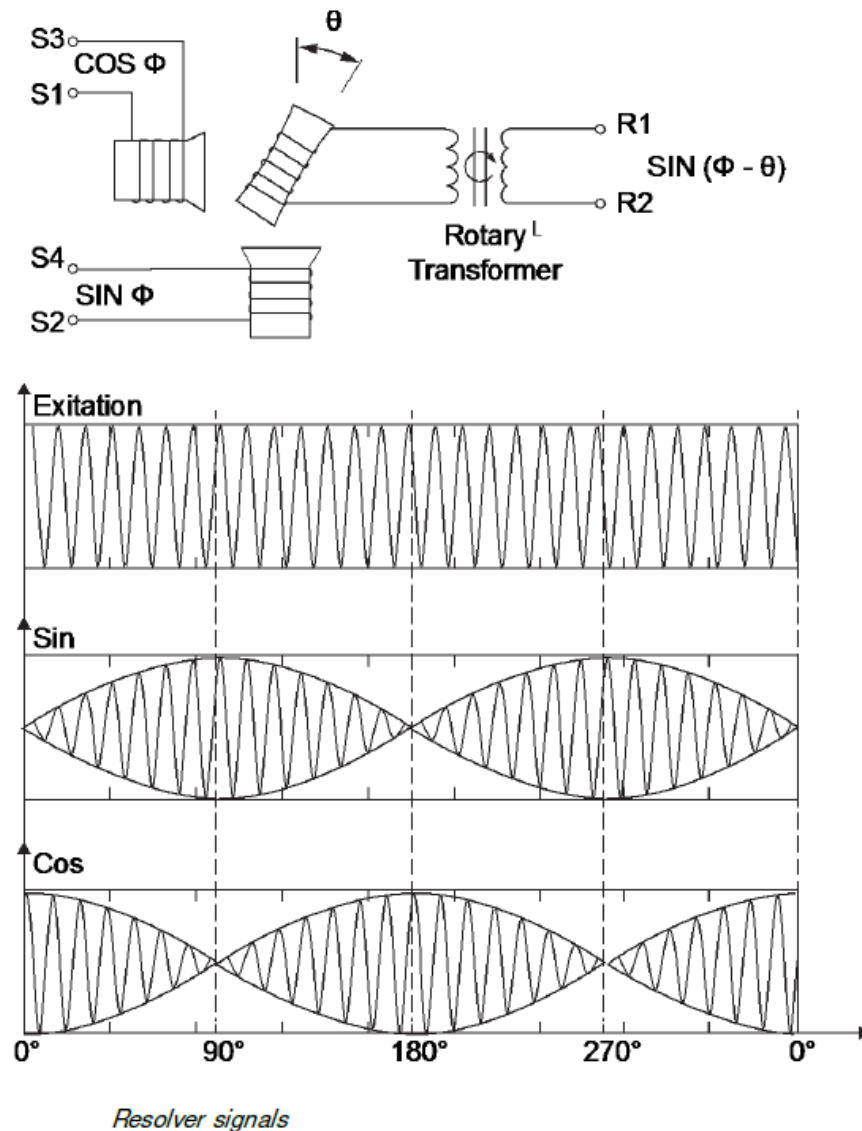
### Resolver basics

A resolver is a rotary transformer where the magnitude of the energy through the resolver windings varies sinusoidal as the shaft rotates. A resolver contains one primary winding and two secondary windings, the SIN and COS windings.

Primary winding is in the rotor of the resolver and secondary windings are in the stator. Secondary windings are mechanically displaced 90 degrees from each other.

The primary winding is excited by an AC voltage called the reference voltage ( $V_r$ ). The induced voltages in the SIN and COS Windings are equal to the value of the Reference Voltage multiplied by the SIN or COS of the angle of the input shaft from a fixed zero

point.



## Resolver signals

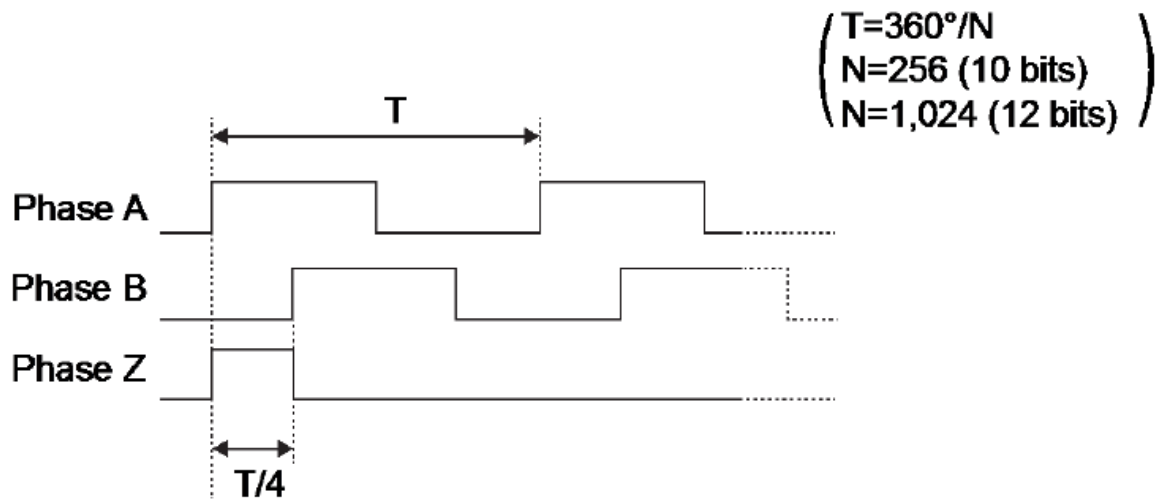
### Why resolvers?

When a Motion control application exists in a hot, humid, dusty, oily, or mechanically demanding environment, a resolver-based system is the preferred choice.

### Resolver to digital conversion basics

The OPT-BC board sends the Excitation signal to the resolver, and resolver sends sin and cos signals back to the board. In the OPT-BC board, sin and cos signals are converted to incremental encoder pulses by the ASIC circuitry (see picture 1).

The incremental pulses are used for calculating rotation speed in the VACON® NXP control card. The conversion from resolver sin/cos signals to digital pulses is called RTD (Resolver To Digital conversion).



Picture 1 Simulated encoder signals from RTD ASIC

### Compatible resolver types

Resolver Output voltage: 1.8Vrms 4.0Vrms

Resolver Input voltage: 1.3Vrms 7.5Vrms

### Number of poles:

#### Note

If the number of poles of the resolver is not 2, then the resolver can only work with a motor that has the same number of poles (e.g. a 6 pole resolver with a 6 pole motor ).

Maximum tracking rates assume that resolver has 2 poles.

### Resolver board features

	14bit	14bit	14bit	16bit
Encoder Simulation Output Resolution	10bit	12bit	14bit	14bit
Encoder Simulation Pulses / rev	256	1024	4096	4096
Position accuracy*	+/- 4 LSB	+/- 4 LSB	+/- 4 LSB	+/- 16 LSB
Velocity accuracy*	+/- 4 LSB	+/- 4 LSB	+/- 4 LSB	+/- 4 LSB



Number	Monitor	Unit	Description
7.3.2.1	Resolver Freq	Hz	Resolver Frequency
7.3.2.2	Resolver Speed	RPM	Resolver Speed
7.3.2.3	Sim. Pulses/rev	—	Simulated pulsed / revolution
7.3.2.4	Encoder 2 Freq	Hz	Encoder Frequency from secondary encoder
7.3.2.5	Encoder 2 Speed	RPM	Encoder Speed from secondary encoder
7.3.2.6	AnIN:C.5		Error register bits. Please see chapter 4.3 OPTBC Resolver error register bits
7.3.2.7	AnIN:C.6		Cumulative error register bits. Please see chapter 4.3 OPTBC Resolver error register bits

## Parameters menu

Number	Parameter	Min	Max	Default	Description
7.3.1.1	Invert Direction	0	1	0	0 = No 1 = Yes
7.3.1.2	Reading Rate	0	4	1	0 = No 1 = 1 ms 2 = 5 ms 3 = 10 ms 4 = 50 ms

7.3.1.3	Exciting frequency	0	19	0	0 = 10 kHz 1 = 20 kHz 2 = 1 kHz 3 = 2 kHz 4 = 3 kHz 5 = 4 kHz 6 = 5 kHz 7 = 6 kHz 8 = 7 kHz 9 = 8 kHz 10 = 9 kHz 11 = 11 kHz 12 = 12 kHz 13 = 13 kHz 14 = 14 kHz 15 = 15 kHz 16 = 16 kHz 17 = 17 kHz 18 = 18 kHz 19 = 19 kHz
7.3.1.4	Resolution	0	3	1	0 = 10 bit 1 = 12 bit 2 = 14 bit 3 = 16 bit
7.3.1.5	Resolver poles	0	9	0	0 = 2 pole 1 = 4 pole 2 = 6 pole 3 = 8 pole 4 = 10 pole

Local contacts: <http://drives.danfoss.com/danfoss-drives/local-contacts>

					5 = 12 pole 6 = 14 pole 7 = 16 pole 8 = 18 pole 9 = 20 pole
7.3.1.6	Enc 2 Pulse /Rev	0	65535	1024	
7.3.1.7	Encoder 2 Type	1	3	1	1 = A,B=Speed 2 = A=Ref,B=Dir 3 = A=Forw,B=Rev

Simulated pulses / rev is calculated on the basis of resolution bits(R) and resolver poles.

The formula used is:

Simulated Pulses/rev =  $2^R \times \text{Resolver poles} / 8$

Example:

### Example:

- Resolution bits = 12
- Resolver poles = 2
- Simulated Pulses/rev =  $2^{12} \times 2 / 8$
- Simulated Pulses/rev =  $2^{12} \times 2 / 8 = 1024$
- The absolute position value is from 0 to 4095 ( $2^{12}=4096$ ).

### Connectors and jumpers





10	ENC2_C-	Encoder input channel C\
11	A	Encoder Simulation Output A
12	A\	Encoder Simulation Output A\
13	B	Encoder Simulation Output B
14	B\	Encoder Simulation Output B\
15	C	Encoder Simulation Output C
16	C\	Encoder Simulation Output C\
17	ENC2_A+	Encoder input channel A
18	ENC2_A-	Encoder input channel A\
19	ENC2_B+	Encoder input channel B
20	ENC2_B-	Encoder input channel B\

## X21 (C-Pulse source selection)



Incremental C-pulse (Zero pulse) to control board is read from the resolver attached to the option board (Default).



C-pulse is External. Read from FRZ input. This feature can be used with special applications for marking position data. Not supported in Standard VACON® NXP applications.

## X10 and X13 (Gain select ion)



- SIN and COS feedback signals from the resolver should be in the range of 1.8 4Vrms

(between SINHI

- SINLO and COSHI – COSLO). To scale the input signals to an acceptable level we can select 1/3, 1/2 or 1/4 attenuation for the input lines. Following equation can be used to calculate output signal level.
- Transformation for the corresponding resolver is told in resolver datasheets.
- $EXC\_OUT$  = excitation output voltage  
 $SIN\ Feedback\ voltage = EXC\_OUT * Transformation\ ratio$
- 

### 1/4 gain for SIN / COS feedback signals from Vrms to 4Vrms

- 1/3 gain for SIN / COS feedback signals from 2.4 Vrms to 3.24Vrms
- 1/2 gain for SIN / COS feedback signals from 1.8 Vrms to 2.39Vrms
- 1.8 Vrms to 2.39Vrms



1/3 gain for SIN / COS feedback signals from 2.4 Vrms to 3.24Vrms



1/2 gain for SIN / COS feedback signals from 1.8 Vrms to 2.39Vrms

X13 sets SIN attenuation and X10 sets COS attenuation. SIN and COS input pairs should all have the same attenuation to keep signals symmetrical.

For example, a resolver that is rated for 5.6Vrms excitation and has a transformation ratio of 0.485 gives output voltage of 2.72Vrms. Excitation voltage and corresponding settings are selected from the table 1 in chapter 2.2.4. In this case exact match is found. Resolver output voltage of 2.72V Vrms fits to the signal range of 1/3 attenuation.

### X3 and X4 Excitation Voltage Control

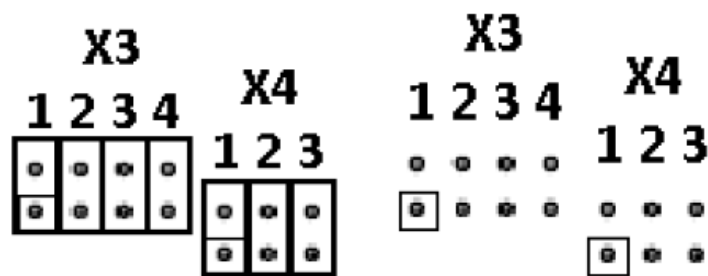
- Resolver option board has an amplifier for adjusting excitation voltage. Jumpers X3-1-4 and X4-1-3 set the amplifier gain and consequently the excitation voltage. Excitation voltage can be set in the range of 1.3Vrms to 7.5Vrms. To get the best possible accuracy, excitation voltage should be selected to be as high as the used resolver allows AND so that the output voltage fits to the given range.

Excitation frequency is set from the control panel and it should be set prior to connecting the resolver to the option board.

- To set the excitation voltage accurately, measure the excitation voltage when resolver is connected. Notice that the measurement device must be capable of measuring high frequency RMS voltage.
- Typical excitation voltage for each jumper setting can be checked from the table, usable values are highlighted.
- EXC\_OUT = target excitation output voltage. This is specified in resolver datasheets (Excitation Voltage)

Now, set the calculated gain with X3 and X4 jumpers. Jumper settings for the desired gain can be found from table. All jumpers attached gives minimum gain and all jumpers open gives maximum gain. Maximum output voltage is limited to the boards internal voltages and is approximately 7.5Vrms. Recommended voltage range is highlighted with blue.

X = Jumper installed



X3- 1	X3- 2	X3- 3	X3- 4	X4- 1	X4- 2	X4- 3	EXC_OUT [Vrms] Typical
X	X	X	X	X	X	X	1.27
	X	X	X	X	X	X	1.34

X		X	X	X	X	X	1.43
		X	X	X	X	X	1.50

X	X		X	X	X	X	1.55
	X		X	X	X	X	1.62
X			X	X	X	X	1.71
			X	X	X	X	1.78
X	X	X		X	X	X	1.87
	X	X		X	X	X	1.94
X		X		X	X	X	2.02
		X		X	X	X	2.10
X	X			X	X	X	2.15
	X			X	X	X	2.22
X				X	X	X	2.30
				X	X	X	2.38
X	X	X	X		X	X	2.43
	X	X	X		x	X	2.50
X		X	X		X	X	2.58
		X	X		X	X	2.66
X	X		X		x	X	2.71
	X		X		X	X	2.78
X			X		X	X	2.86
			X		X	X	2.94
X	X	X			X	X	3.03

	X	X			X	X	3.10
X		X			X	X	3.18
		X			X	X	3.25
X	X				X	X	3.31
	X				X	X	3.38
X					X	X	3.46
					X	X	3.53
X	X	X	X	X		X	3.56
	X	X	X	X		X	3.64
X		X	X	X		X	3.72
		X	X	X		X	3.79
X	X		X	X		X	3.84
	X		X	X		X	3.92
X			X	X		X	4.00
			X	X		X	4.07
X	X	X		X		X	4.16
	X	X		X		X	4.23
X		X		X		X	4.31
		X		X		X	4.39
X	X			X		X	4.44
	X			X		X	4.51

X				X		X	4.59
				X		X	4.67
X	X	X	X			X	4.72
	X	X	X			X	4.79
X		X	X			X	4.87
		X	X			X	4.95
X	X		X			X	5.00
	X		X			X	5.07
X			X			X	5.15
			X			X	5.23
X	X	X				X	5.32
	X	X				X	5.39
X		X				X	5.47
		X				X	5.54

X	X					X	5.60
	X					X	5.67
X						X	5.75
						X	5.82
X	X	X	X	X	X		5.85
	X	X	X	X	X		5.93

X		X	X	X	X		6.01
		X	X	X	X		6.08
X	X		X	X	X		6.13
	X		X	X	X		6.21
X			X	X	X		6.29
			X	X	X		6.36
X	X	X		X	X		6.45
	X	X		X	X		6.52
X		X		X	X		6.61
		X		X	X		6.68
X	X			X	X		6.73
	X			X	X		6.80
X				X	X		6.89
				X	X		6.96
X	X	X	X		X		7.01
	X	X	X		X		7.08
X		X	X		X		7.17
		X	X		X		7.24
X	X		X		X		7.29
	X		X		X		7.36



X			X		X		7.45
			X		X		7.52

## Configuration example

### Example Resolver Datasheet

Input Voltage (rms)	6.1 V @10 kHz
Transformation Ratio (+- 5%)	0.485
Output Voltage	2.96V

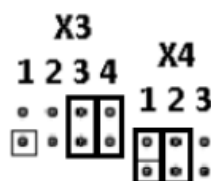
#### 1. Step 1:

Check resolvers input voltage and select corresponding configuration for jumpers X3 and X4 from the table1.->6.1 V (Use smaller Voltage from the table if exact match is not found = 6.08V)

X3- 1	X3- 2	X3- 3	X3- 4	X4- 1	X4- 2	X4- 3	EXC_OUT [Vrms] Typical
		X	X	X	X		6.08
X	X		X	X	X		6,.3

#### 2. Step 2:

- Find resolver output voltage from the datasheet or calculate it.



- Output voltage = input voltage transformation ratio.
- Output Voltage = 6.08 0.485

- Output Voltage = 2.95 Vrms
- 1/4 gain for SIN / COS feedback signals from
- 3.25 Vrms to 4Vrms
- 1/3 gain for SIN / COS feedback signals from
- 2.4 Vrms to 3.24Vrms
- 1/2 gain for SIN / COS feedback signals from
- 1.8 Vrms to 2.39Vrms
- If Output voltage is higher than 4Vrms -> Lower the excitation voltage. ->Use 1/3 gain

Configure board using the control panel. (Software configuration)

Invert Direction ->This parameter can be used for inverting rotation direction

### **Reading Rate -> Default 1ms.**

In noisy environments this parameter can be used to filter disturbances. Set first to 5ms if the shaft is not running smoothly. 7.3.1.3 Exciting freq -> Select the Exciting frequency as told in specification >In this example 10kHz

Resolution ->Default 12bit ->In slow Speed applications high Resolution can be used.

Planned Max Speed in Example is 1500rpm

Select highest possible accuracy ->16 bit

$(16\text{bit}) = 7500\text{rpm} \cdot 2 / \text{Resolver\_Poles}$

7.3.1.5 Resolver poles = 2 poles

## **INSTALLATION**

### **WARNING!**

Internal components and circuit boards are at high potential when the AC drive is connected to the power source. This voltage is extremely dangerous and may cause death or severe injury if you come into contact with it.

### **Installing the option board**

Following installation guidelines should be followed carefully to get the best performance of the system. Improper installation of the system might cause to disturbances which

may in RTD conversion generate extra encoder pulses or jitter to the pulse lengths.

- Since the board supports large variation of resolvers, the used resolver should always be verified before installation.
- The option board OPT-BC can only be used with VACON® NXP drives.
- The option board OPT-BC can be connected to slot C.
- Disconnect the drive from the mains before starting the installation.
- VACON® NXP AC drive
- Remove the cable cover.



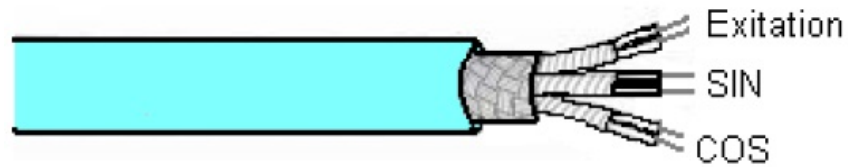
- Open the cover of the control unit.



- Install the option board in slot C on the control board of the AC drive. Make sure that the grounding plate fits tightly in the clamp. Strip the cable at such distance from the terminal that you can fix it to the enclosure with the grounding clamp.

Note! We recommend to use always shielded twisted pair cables with resolvers. Use cables that are recommended for encoder and resolver feedback.

Do not mix signals in twisted pairs.



- Always make grounding contact throughout the full circumference of the cable (360°)
- The cable is weakened where the shield is removed



- Make a sufficiently wide opening for your cable by cutting the grid as wide as necessary.



- Close the cover of the control unit and the cable cover.

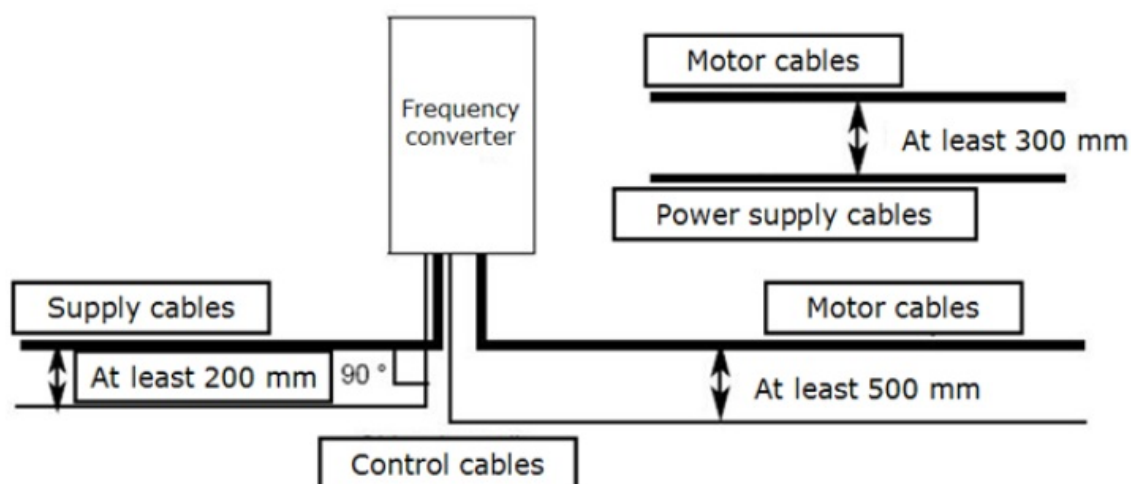


## Installing the resolver

Connect the resolver after setting the jumpers. Use cable clamp in the lower part of the VACON® NXP drive to connect cable shield. Strip the cable so that the shield is exposed only from the part that is fitted to the clamp.

### Additional cabling instructions

The resolver and other control cables should not be in parallel with power cables (supply and motor cable).



The feedback signals might also suffer from the noise coming from motor and supply cables. Use shielded symmetrical motor cables. It is recommended to connect the motor cable shield with 360° emc bushing. The motor and supply cables should not be in parallel with resolver signal cable.

## DIAGNOSTICS AND TROUBLESHOOTING

The panel shows in the G7.3 that board is OPT-BC. Monitor values from shows:

1. Resolver Freq (Hz)
2. Resolver Speed (Rpm)
3. Sim. Pulses/rev
4. Encoder 2 Freq
5. Encoder 2 Speed
6. AnIN:C.5\*
7. AnIN:C.6\*

\*Error register bits. Please see chapter 4.3 OPTBC Resolver error register bits

Parameter values from panel index 7.3.1

1. Invert direction
2. Reading rate
3. Exciting freq (10 / 20 kHz)
4. Resolution bits(10 / 12 bits)
5. Resolver Poles
6. Enc 2 Pulse / Rev
7. Encoder 2 type
8. Simulated pulses/rev is calculated on the basis of resolution bits(R) and resolver poles

The formula used is  $\text{Simulated Pulses/rev} = 2^R * \text{Resolver poles} / 8$ .

### Example:

- Resolution bits = 12
- Resolver poles = 2
- $\text{Simulated Pulses/rev} = 2^{12} * 2 / 8$
- $\text{Simulated Pulses/rev} = 2^{12} * 2 / 8 = 1024$
- Lower resolution is used in high speed applications. In 10-bit mode the resolver sends 256 pulses /
- revolution and in 12 bit mode 1024 pulses / revolution = 2 .
- The absolute position value is from 0 to 4095 ( $2^{12}=4096$ ).

### Fault handling

OPTBC Resolver option board reports fault to the application in case where LOS (loss of signal) or LOT (loss of traction) situation is detected. Actions after the fault depends from the application configuration.

The option board informs the application when the situation returns to normal.

### LED indicators

There are two LED indicators in the option board:

Yellow Board status LED

LED is:	Meaning:
---------	----------

OFF	Option board not activated
Fast Blinking	Normal operation (cycle 1s)
Slow Blinking	Fault state (cycle 2s)

### Red Error LED (Loss of traction)

LED is:	Meaning:
OFF	OK
ON	Loss of traction. Error LED is set to OFF when the problem disappears

### Fault conditions:

- Incorrect settings for resolver
- Resolver failure
- Cabling failure

In case of failure, check the jumper settings, cabling and resolver assembling.

### OPTBC Resolver error register bits

Analog input variables ANIN5 and ANIN6 shows error registers of the OPTBC Resolver option board.

These variables can be seen as 7.3.2.6 AnIN:C.5 and 7.3.2.7 AnIN:C.6 monitor values. Application developers can also use this information in application if needed.

ANIN5 shows currently active error register bits.


ANIN6 shows cumulative error register bits after AC drive boot.

Bit	Description
D7	Sine/cosine inputs clipped

D6	Sine/cosine inputs below LOS threshold
D5	Sine/cosine inputs exceed DOS overrange threshold
D4	Sine/cosine inputs exceed DOS mismatch threshold
D3	Tracking error exceeds LOS threshold
D2	Velocity exceeds maximum tracking rate
D1	Phase error exceeds phase lock range
D0	Configuration parity error

- Vacon Ltd
- Member of the Danfoss Group
- Runsorintie 7
- 65380 Vaasa
- Finland

## Documents / Resources

	<a href="#">VACON NX OPTBC Resolver Board [pdf]</a> User Manual BC361182932762en-000301, NX OPTBC Resolver Board, NX OPTBC, Resolver Board, Board
---	--

## References

- [User Manual](#)

## Related Posts

[VACON OPTA9 AC Drive Board Instruction Manual](#)

VACON OPTA9 AC Drive Board Product Information Specifications: Product Type: Input/Output (I/O) Cards Available Types: Base I/O Cards,...





### [BraunAbility Transfer Board User Manual](#)

BraunAbility Transfer Board Overview How to Use: Risk for seat belt damage: Make sure that the seat belt...



### [GuliKit NS38 Drawing Board User Manual](#)

NS38 Drawing Board



### [ST UM2861 Development Board User Manual](#)

ST UM2861 Development Board

BC361182932762en-000301, Board, NX OPTBC, NX OPTBC Resolver Board, Resolver Board,

VACON VACON

## Leave a comment

Your email address will not be published. Required fields are marked \*

Comment \*

Name

Email

Website

☐ Save my name, email, and website in this browser for the next time I comment.

Post Comment

Search:

e.g. whirlpool wrf535swhz

Search

[Manuals+](#) | [Upload](#) | [Deep Search](#) | [Privacy Policy](#) | [@manuals.plus](#) | [YouTube](#)

This website is an independent publication and is neither affiliated with nor endorsed by any of the trademark owners. The "Bluetooth®" word mark and logos are registered trademarks owned by Bluetooth SIG, Inc. The "Wi-Fi®" word mark and logos are registered trademarks owned by the Wi-Fi Alliance. Any use of these marks on this website does not imply any affiliation with or endorsement.