

V380 Pro H1 WIFI Smart Camera App



V380 Pro H1 WIFI Smart Camera App Instruction Manual

[Home](#) » [V380 Pro](#) » V380 Pro H1 WIFI Smart Camera App Instruction Manual 

Contents

- 1 V380 Pro H1 WIFI Smart Camera App
- 2 Product Information
- 3 Product Usage Instructions
- 4 Hotspot configuration
- 5 Android
- 6 iOS
- 7 Real-time preview
- 8 Video replay
- 9 Video recording with Micro SD card
- 10 Settings
- 11 Attention
- 12 Compliance FCC Statement
- 13 Caution
- 14 Documents / Resources
 - 14.1 References



V380 Pro H1 WIFI Smart Camera App



Product Information

Specifications:

- **Model:** XYZ-2000
- **Power:** 1200W
- **Capacity:** 5 liters
- **Weight:** 2.5 kg
- **Dimensions:** 30cm x 20cm x 25cm

Product Usage Instructions

1. Setup

Place the XYZ-2000 on a flat, stable surface near a power outlet. Ensure the power cord is easily accessible.

2. Filling the Tank

Open the tank lid and fill it with water up to the maximum capacity line indicated inside the tank. Do not overfill.

3. Power On

Plug in the power cord and switch on the device using the power button located on the control panel.

4. Setting the Temperature

Use the temperature control knob to set your desired temperature. Wait for the water to reach the set temperature before use.

5. Using the Product

Once the water has reached the desired temperature, you can start using the product for your intended purpose.

Frequently Asked Questions (FAQ)

- **Q: How often should I clean the XYZ-2000?**

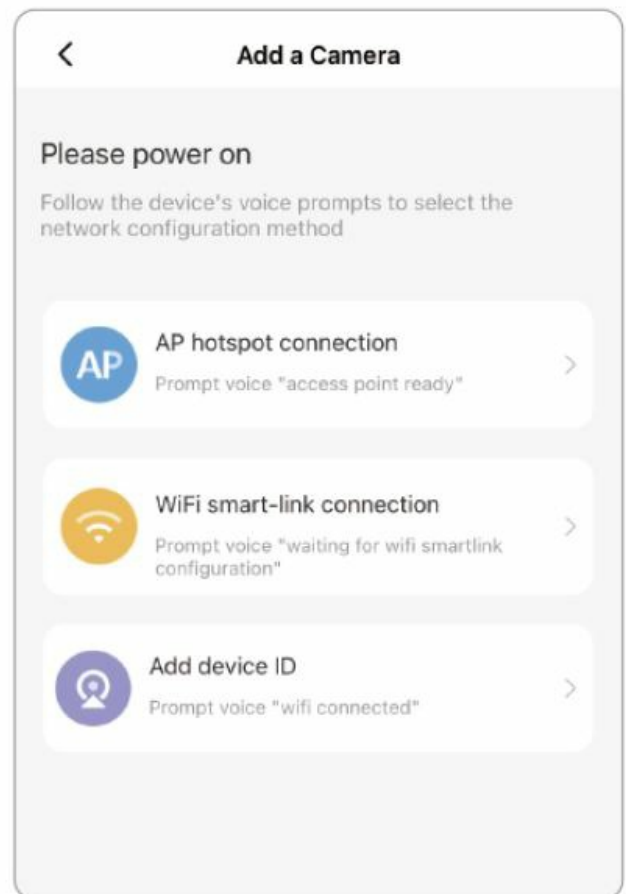
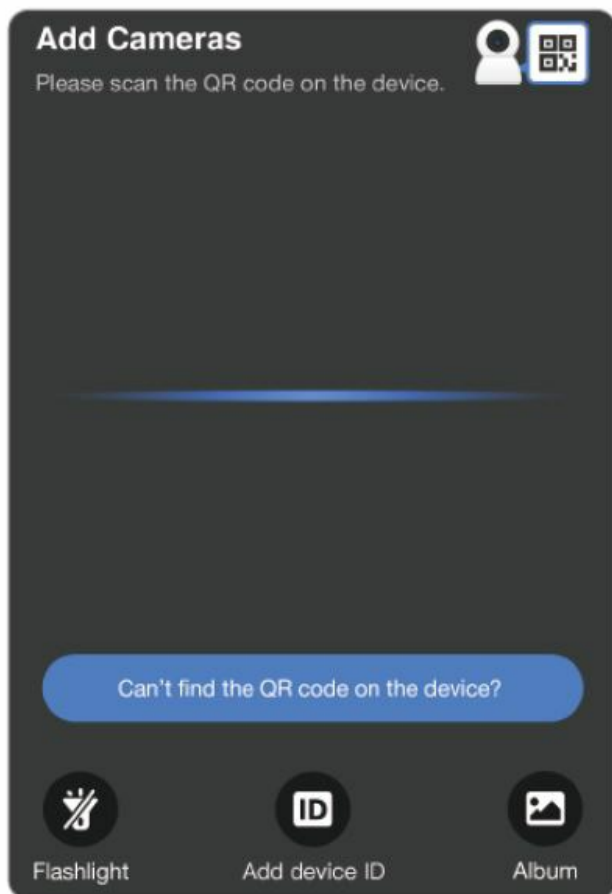
A: It is recommended to clean the XYZ-2000 after every use to maintain optimal performance and hygiene.

- **Q: Can I use essential oils with this product?**

A: No, it is not recommended to use essential oils with the XYZ-2000 as it may damage the internal components.

Hotspot configuration

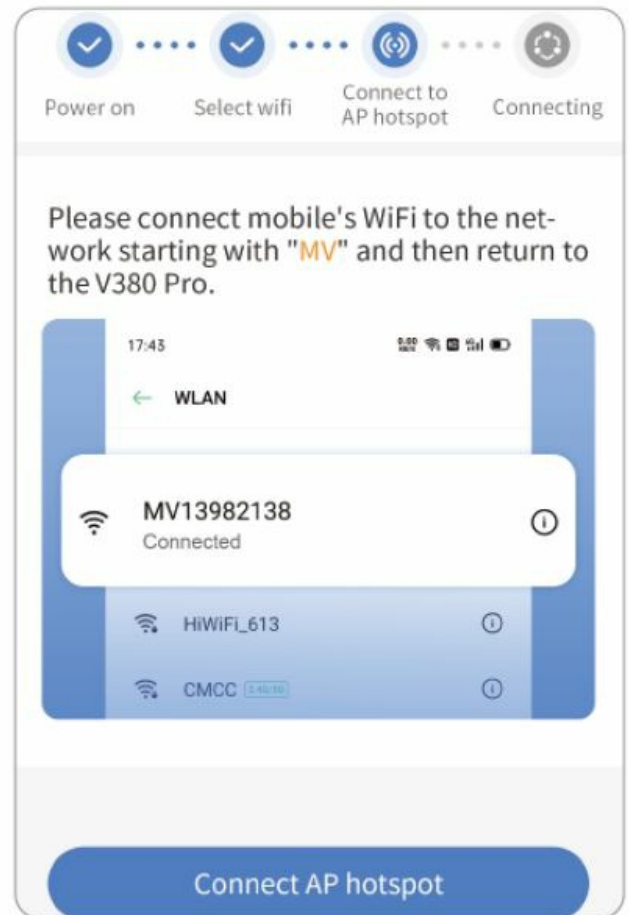
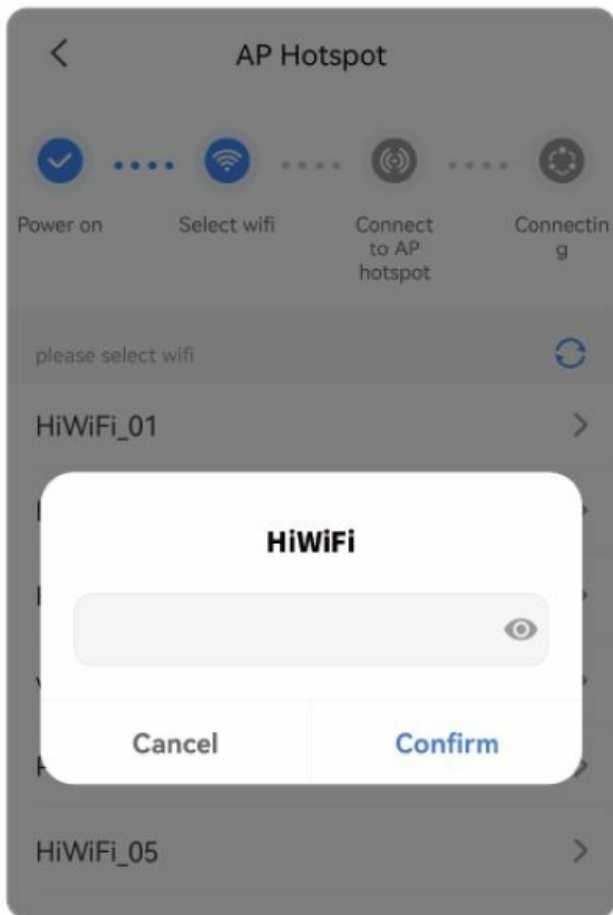
1. Click “Can’t find the QR code on the device?”.
2. Select “WiFi Smart Camera” – “AP hotspot connection”.



Note: Please connect your phone to wifi required by your device first.

Android

1. Select WiFi and enter your WiFi password.
2. Select the “Connect AP hotspot” button and connect to the device hotspot(MV+ID).
3. The device will automatically connect to WiFi after returning to the APP.

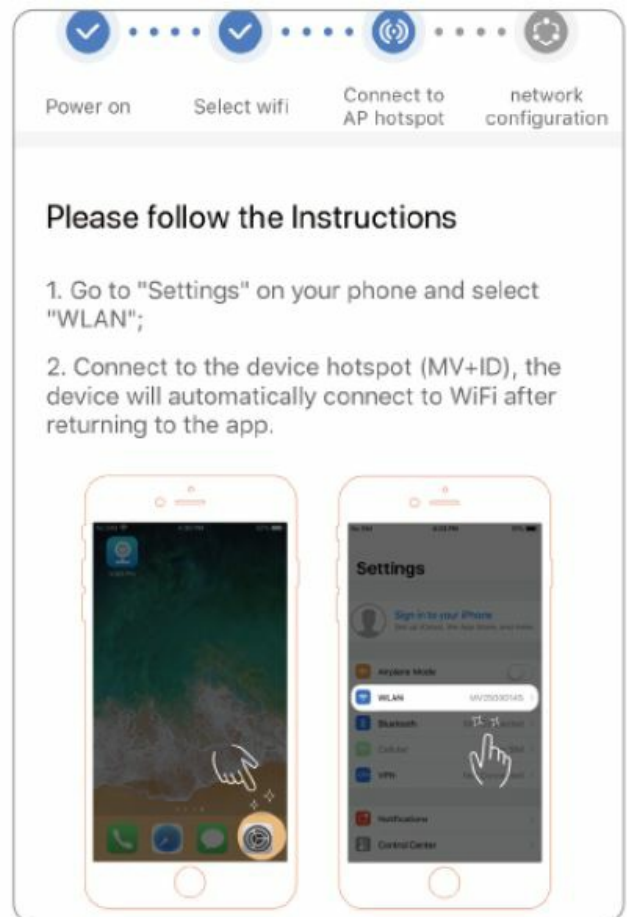
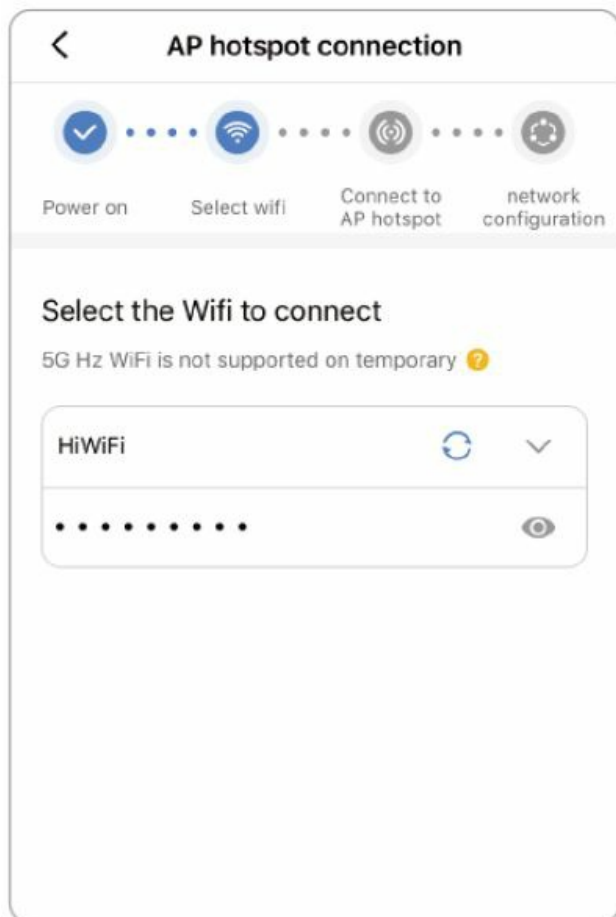


Note:

You can find the corresponding ID on the device body tag which is for the hotspot's name.

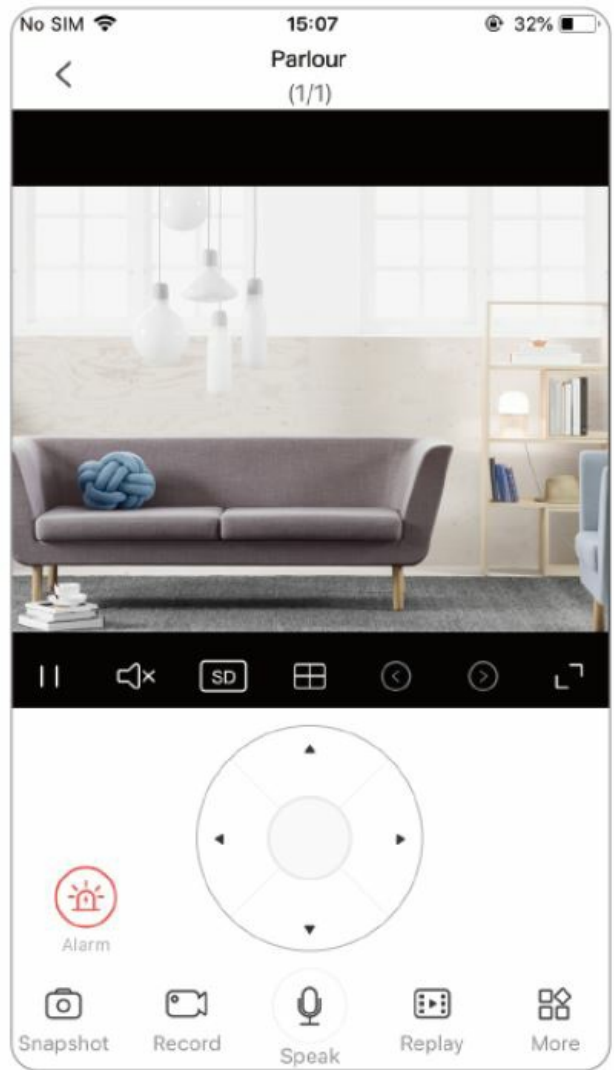
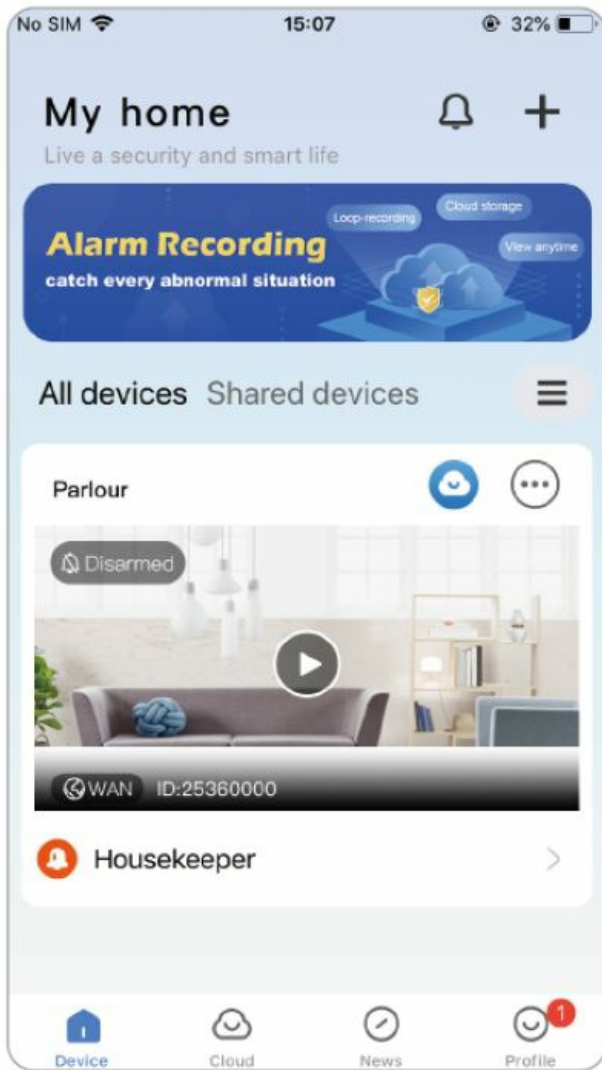
iOS

1. Enter your WiFi password. (If you want to connect to other WiFi, please connect your mobile phone to the WiFi you need and then return to the APP to refresh).
2. Select "Connect AP hotspot" button and connect to the device hotspot(MV+ID).
3. The device will automatically connect to WiFi after returning to the APP.



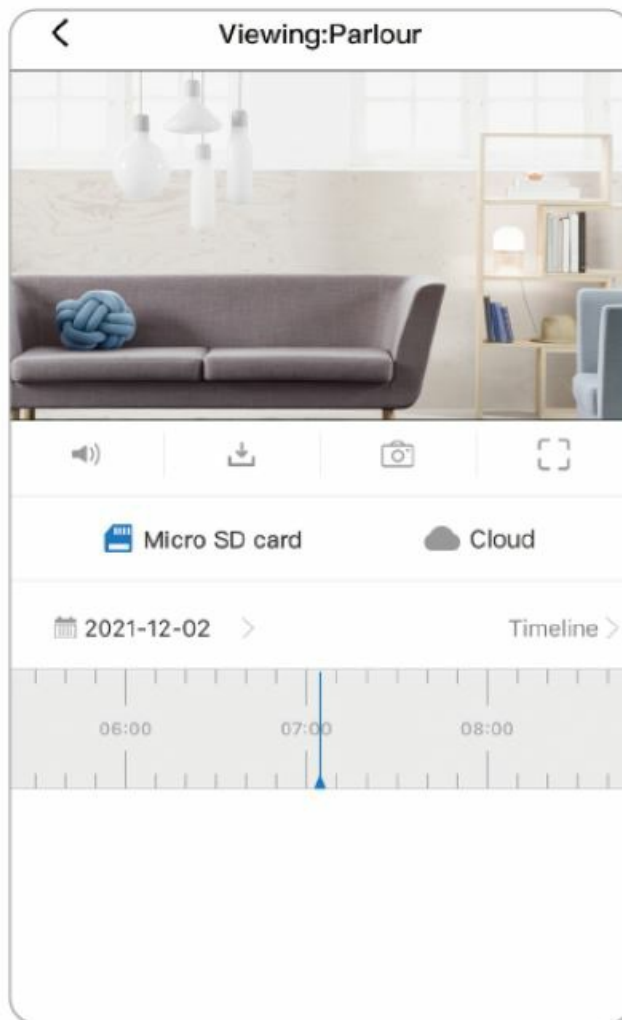
Real-time preview

The added camera can be viewed in the device list, and the real-time preview interface can be viewed by selecting the camera.



Video replay

After connecting the camera in the APP, open the real-time preview interface, and click “Replay” in the function bar.



Video recording with Micro SD card

Before installing the Micro SD card, power off the camera first, and then turn on the power after installation.

- The ordinary camera supports up to 128G capacity of the TF card.
 - The format of 32G and below is "FAT32".
 - The format of 64G and above is "exFAT".

Settings

In the device list, click  -  [Recording settings].

1. Recording settings

- Continuous recording: continuous recording will be performed during the working period of the camera.
- Event recording: recording will be started only when the alarm is triggered.
- Record audio: whether audio is included during recording.

2. Video quality setting

- You can set the quality of the video by yourself: HD or SD.

Attention

- The camera only supports 2.4GHz WiFi. Please confirm that the WiFi connected by the mobile phone is 2.4GHz before network configuration.
- Concerning Micro SD card recording, when the recording volume reaches the upper limit, the earliest recording file of the recording event will be automatically overwritten.
- Long-term use in unconventional environments (high temperature, high humidity, a large amount of dust or smoke, etc.) may damage the camera.
- V380 Pro APP and device firmware will be updated from time to time. For your best experience, please update the APP and upgrade the device firmware in time.

This camera adopts hardware and software that comply with national standards, ensuring the practicality, stability, and safety of the product. This device has undergone rigorous testing and can be used in various indoor and outdoor scenarios, widely used in work and life. Daily use of cameras should pay attention to the following points:

1. Do not point the camera directly at sunlight to avoid damaging the image-sensing device of the camera.
2. Avoid contact between the camera and substances such as oil, steam, moisture, and dust.
3. Do not use irritating cleaning agents or organic solvents to wipe the camera.
4. Do not pull or twist the connecting wire, as such operations may cause damage to the camera.
5. Do not open the camera and touch its internal components unnecessarily, causing damage to the camera.

Compliance FCC Statement

This equipment has been tested and found to comply with the limits for a Class B digital device, under part 15 of the FCC Rules. These limits are designed to provide reasonable protection against harmful interference in a residential installation. This equipment generates, uses and can radiate radio frequency energy and, if not installed and used under the instructions, may cause harmful interference to radio communications. However, there is no guarantee that interference will not occur in a particular installation. If this equipment does cause harmful interference to radio or television reception, which can be determined by turning the equipment off and on, the user is encouraged to try to correct the interference by one or more of the following measures:

- Reorient or relocate the receiving antenna.
- Increase the separation between the equipment and the receiver.
- Connect the equipment to an outlet on a circuit different from that to which the receiver is connected.
- Consult the dealer or an experienced radio/TV technician for help.

This device complies with part 15 of the FCC Rules. Operation is subject to the following two conditions: (1) This device may not cause harmful interference, and (2) this device must accept any interference received, including interference that may cause undesired operation.


Caution

Any changes or modifications not expressly approved by the party responsible for compliance could void the user's authority to operate the equipment.

FCC Radiation Exposure Statement

This equipment must be installed and operated per provided instructions and the antenna(s) used for this transmitter must be installed to provide a separation distance of at least 20 cm from all persons and must not be co-located or operating in conjunction with any other antenna or transmitter. End-users and installers must be provided with antenna installation instructions and transmitter operating conditions for satisfying RF exposure com.

Documents / Resources

	V380 Pro H1 WIFI Smart Camera App [pdf] Instruction Manual H1 WIFI Smart Camera App, H1, WIFI Smart Camera App, Smart Camera App, Camera App
---	---

References

- [User Manual](#)

[Manuals+](#). [Privacy Policy](#)

This website is an independent publication and is neither affiliated with nor endorsed by any of the trademark owners. The "Bluetooth®" word mark and logos are registered trademarks owned by Bluetooth SIG, Inc. The "Wi-Fi®" word mark and logos are registered trademarks owned by the Wi-Fi Alliance. Any use of these marks on this website does not imply any affiliation with or endorsement.