

# V I V O MOUNT-KB05P Clamp on Keyboard Tray with RGB Pad Instruction Manual

[Home](#) » [V I V O](#) » V I V O MOUNT-KB05P Clamp on Keyboard Tray with RGB Pad Instruction Manual 

## Contents

- [1 V I V O MOUNT-KB05P Clamp on Keyboard Tray with RGB Pad](#)
- [2 Product Information](#)
- [3 Product Usage Instructions](#)
- [4 PACKAGE CONTENTS](#)
- [5 ASSEMBLY STEPS](#)
- [6 Contact](#)
- [7 Documents / Resources](#)
  - [7.1 References](#)
- [8 Related Posts](#)



V I V O MOUNT-KB05P Clamp on Keyboard Tray with RGB Pad



## Product Information

The Black Clamp-on Keyboard Tray with RGB Pad is a functional and stylish addition to your workspace. It is designed to mount onto the edge of your desk, providing a convenient and ergonomic solution for your keyboard and mouse. The tray comes with a mouse pad and an RGB pad that can be plugged into a 5V USB power supply. The tray has a weight capacity of 11lbs (5kg) and is equipped with slider brackets that allow you to adjust the position of the tray to suit your needs.

## The package contents include

- (x1) Keyboard Tray (A)
- (x2) Connecting Plate (B)
- (x1) Keyboard Stop (C)
- (x1) Slider Brackets (D)
- (x1) Clamps (E)
- (x2) Pad (F)
- (x1) Mouse Pad (G)
- (x1) Power Cable (H)
- (x6) M4x7mm Flat Head Screw (S-A)
- (x8) M5x12mm Screw (S-B)
- (x12) M5x12mm Flat Head Screw (S-C)

## **Tools needed for assembly:**

- Phillips Screwdriver

**WARNING:** CHOKING HAZARD – SMALL PARTS – NOT FOR CHILDREN UNDER 3 YEARS. ADULT SUPERVISION IS REQUIRED.

## **Product Usage Instructions**

### **Step 1: Assemble Keyboard Tray**

1. Attach the Connecting Plates (B) to the Keyboard Tray (A) using the M5x12mm Flat Head Screws (S-C).
2. Tighten the screws using a Phillips screwdriver.

### **Step 2: Attach Keyboard Stop and Slider Brackets**

1. Attach the Keyboard Stop (C) to the back of the Keyboard Tray (A) using the M5x12mm Flat Head Screws (S-C) and a Phillips screwdriver.
2. Attach the Slider Brackets (D) to the Keyboard Tray (A) using the M5x12mm Screws (S-B) and a Phillips screwdriver.
3. Tighten the screws.
4. The Slider Brackets (D) should protrude from the back of the keyboard tray assembly.

### **Step 3: Assemble Clamps**

1. Attach the Clamps (E) to the Slider Brackets (D) using the M4x7mm Flat Head Screws (S-A).
2. Tighten the screws using a Phillips screwdriver.

### **Step 4: Attach Mouse Pad and Plug in Power Cable**

1. Place the Mouse Pad (G) on the Keyboard Tray (A).
2. Plug the Power Cable (H) into the Mouse Pad (G) and plug the other end into a 5V USB power supply.

### **Step 5: Attach Pads and Tighten Clamps**

1. Place the Pads (F) on the underside of each Clamp (E).
2. Place the assembled keyboard mount on the edge of the desktop.
3. Tighten the Clamps (E).

If any parts are received damaged or defective, please contact us for a replacement. Our dedicated support team is available Monday – Friday from 7:00 am-7:00pm CST via chat, phone, and email.

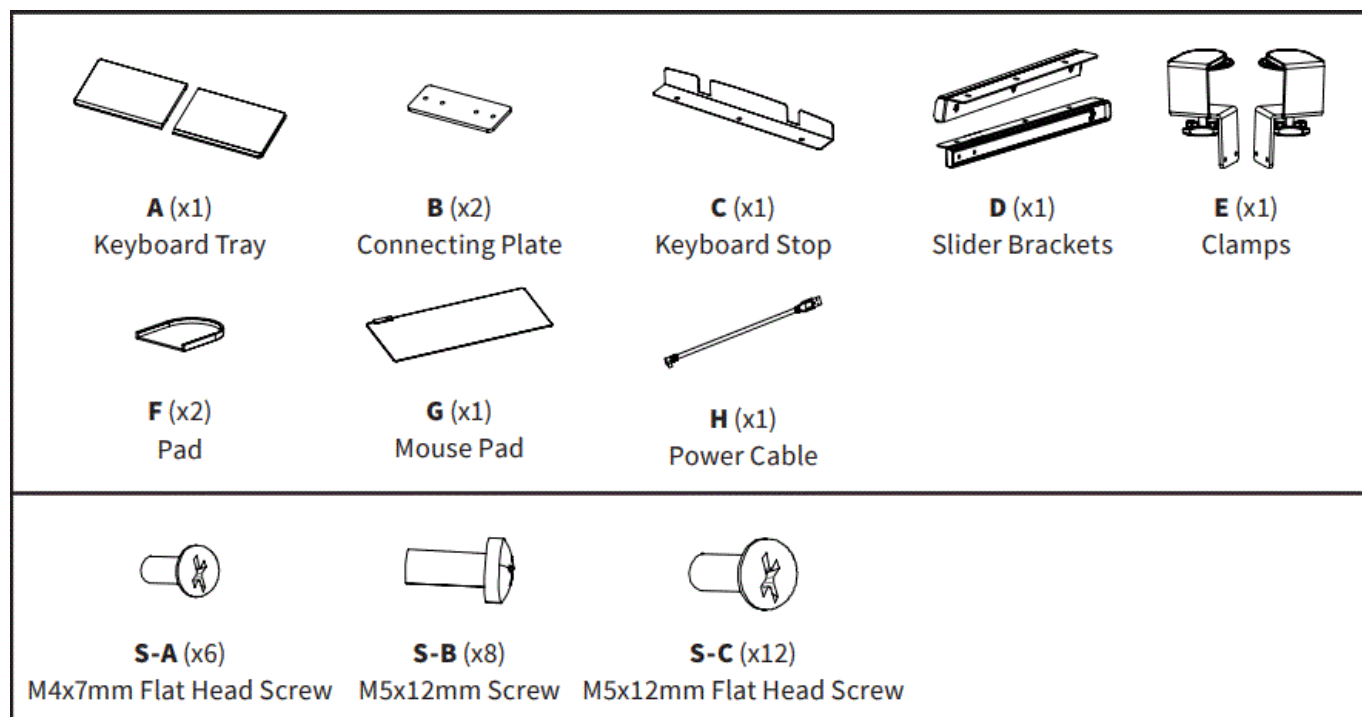
## **WARNING**

If you do not understand these directions, or if you have any doubts about the safety of the installation, please call a qualified technician. Check carefully to make sure there are no missing or defective parts. Improper installation may cause damage or serious injury. Do not use this product for any purpose that is not explicitly specified in this manual. Do not exceed weight capacity. We cannot be liable for damage or injury caused by improper mounting, incorrect assembly or inappropriate use.

**WARNING: CHOKING HAZARD**

SMALL PARTS – NOT FOR CHILDREN UNDER 3 YEARS. ADULT SUPERVISION IS REQUIRED.

**PACKAGE CONTENTS**



**NOTE:** SOME HARDWARE INCLUDED MAY NOT BE USED

**TOOLS NEEDED**



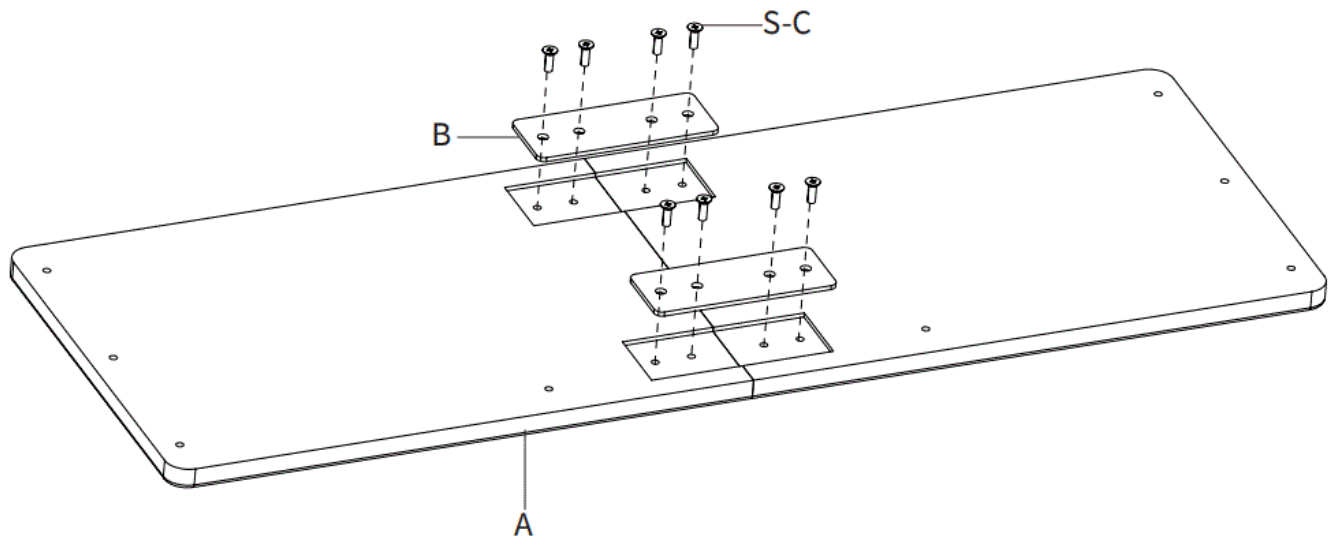
- DO NOT EXCEED WEIGHT CAPACITY.



- Failure to do so may result in serious injury.

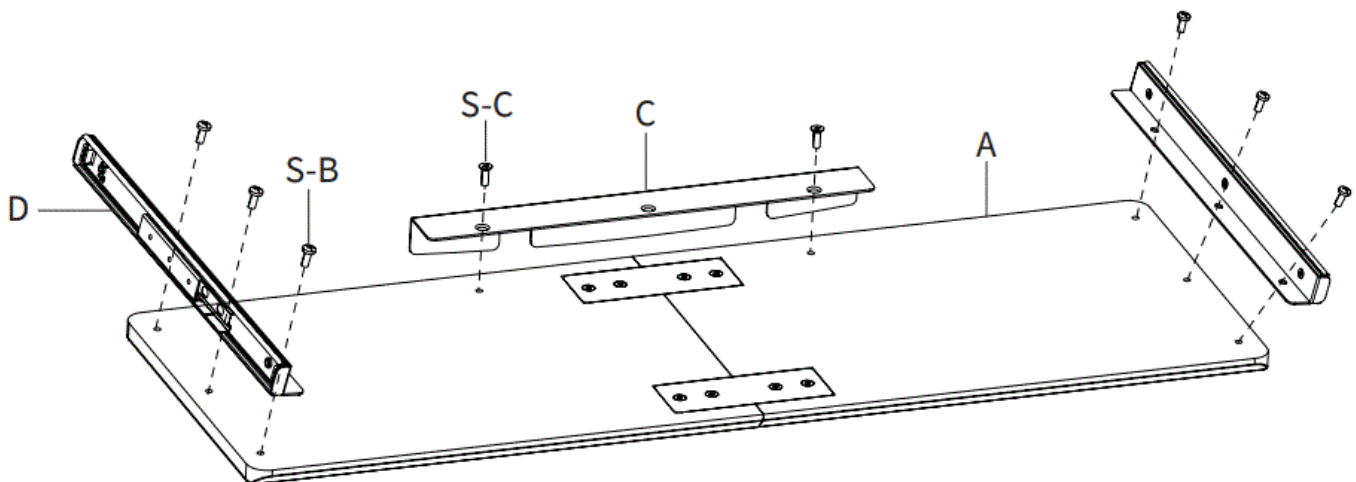
**ASSEMBLY STEPS**

## STEP 1



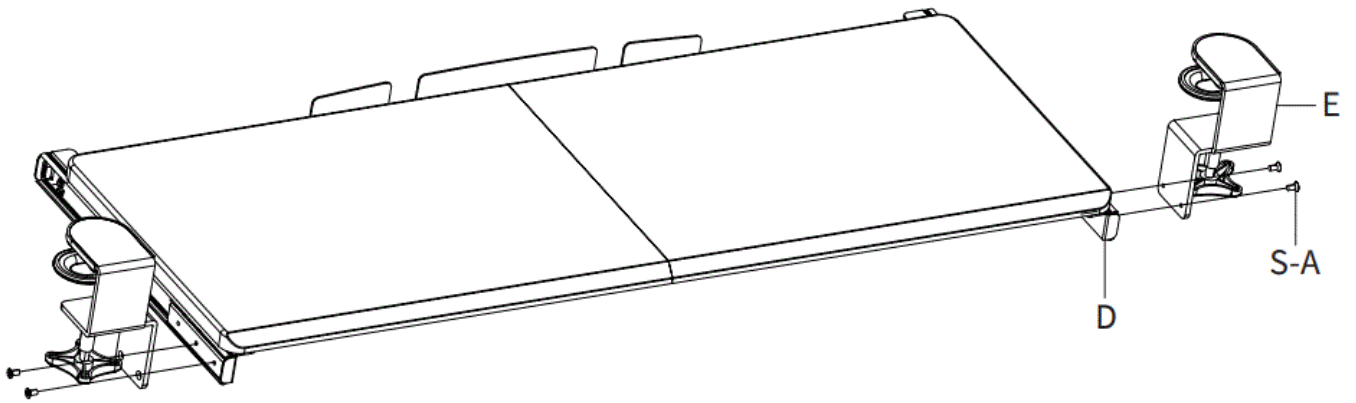
- Assemble Keyboard Tray (A) using Connecting Plates (B) and M5x12mm Flat Head Screws (S-C). Tighten with a Phillips screwdriver..

## STEP 2



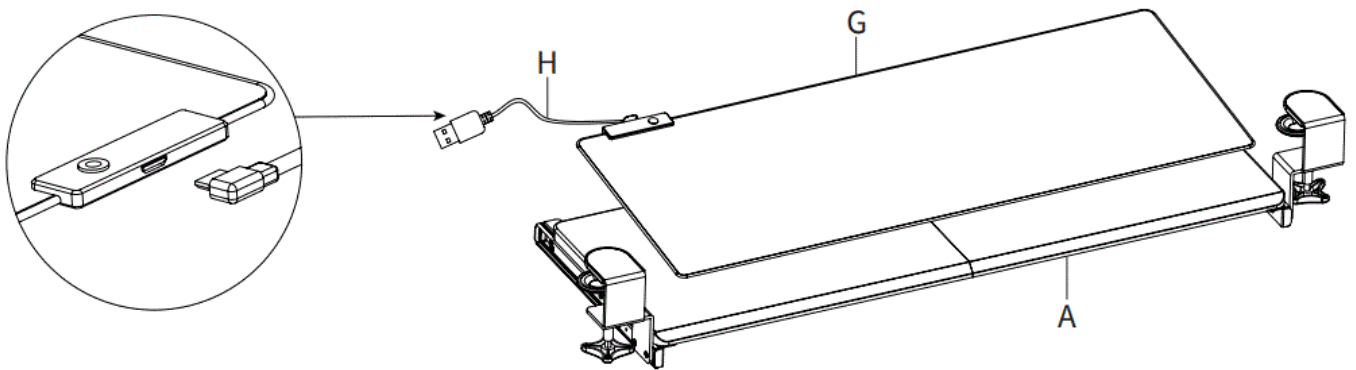
- Attach Keyboard Stop (C) to the back of Keyboard Tray (A) using M5x12mm Flat Head Screws (S-C) and a Phillips screwdriver.
- Assemble Slider Brackets (D) to Keyboard Tray (A) using M5x12mm Screws (S-B), and tighten with a Phillips screwdriver. Slider Brackets (D) should protrude from the back of the keyboard tray assembly.

## STEP 3



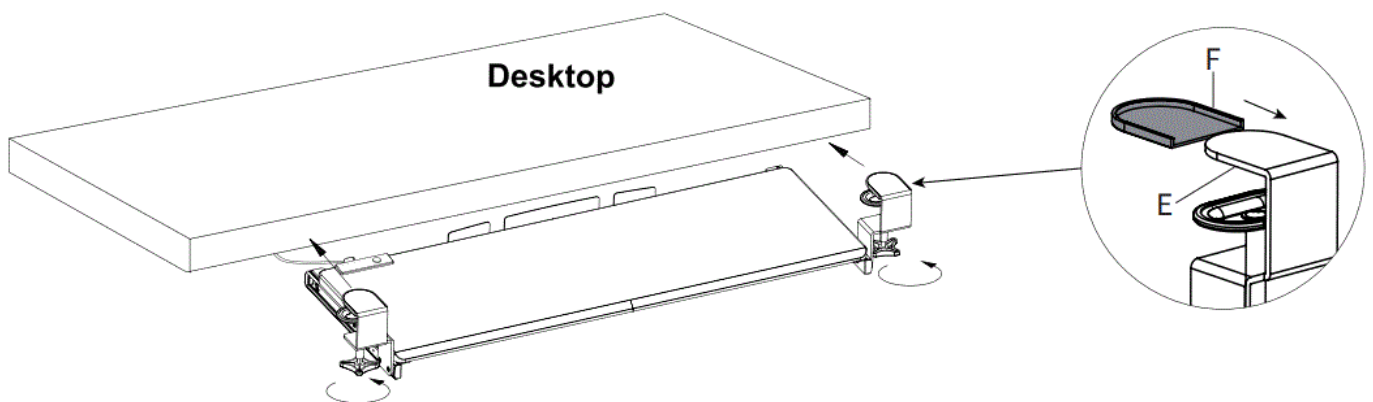
- Assemble Clamps (E) to the Slider Brackets (D) using M4x7mm Flat Head Screws (S-A). Tighten with a Phillips screwdriver.

#### STEP 4



- Place Mouse Pad (G) on Keyboard Tray (A). Plug Power Cable (H) into Mouse Pad (G) and plug the other end into a 5V USB power supply.

#### STEP 5



- Place Pads (F) on the underside of each Clamp (E). Place assembled keyboard mount on the edge of the desktop and tighten Clamps (E).

#### Contact



## Love your new VIVO setup and want to share?

- Tag us in your photo! @vivo\_us

Open Monday – Friday 7:00am – 7:00pm CST, our dedicated support team can offer immediate assistance with rapid response times. If any parts are received damaged or defective, please contact us. We are happy to replace parts to ensure you have a fully functioning product.

- 309-278-5303
  - **AVG. RESOLUTION TIME (within office hrs):** 5M 4S
- [www.vivo-us.com](http://www.vivo-us.com)
  - Chat live with an agent!
  - **AVG. RESOLUTION TIME (within office hrs):** < 15 M
- [help@vivo-us.com](mailto:help@vivo-us.com)
  - **AVG. RESPONSE TIME (within office hrs):** 1HR 8M
  - 23% within < 15m
  - 38% within < 30m
  - 61% within < 1hr
  - 83% within < 2hr
  - 92% within < 3hr


**FOR MORE VIVO PRODUCTS, CHECK OUT OUR WEBSITE AT:** [www.vivo-us.com](http://www.vivo-us.com)

- Scan the QR code with your mobile device or follow the link for helpful videos and specifications related to this product.






- <https://vivo-us.com/products/mount-kb05p>

## Documents / Resources

 <p>VIVO logo and a small image of the MOUNT-KB05P Clamp on Keyboard Tray with RGB Pad.</p>	<p><b><a href="#">V I V O MOUNT-KB05P Clamp on Keyboard Tray with RGB Pad</a></b> [pdf] Instruction Manual MOUNT-KB05P Clamp on Keyboard Tray with RGB Pad, MOUNT-KB05P, Clamp on Keyboard Tray with RGB Pad, Keyboard Tray with RGB Pad, Tray with RGB Pad, RGB Pad</p>
--	--

## References

-  [Register a .US.COM domain today!](#)
-  [VIVO - Desks, Monitor Mounting, and More Home & Office Solutions – VIVO - desk solutions, screen mounting, and more](#)
-  [Clamp-on Keyboard Tray with RGB Pad – VIVO - desk solutions, screen mounting, and more](#)

Manuals+.