



V I V O MOUNT-KB05GL Clamp on Height Adjustable Keyboard Tray with RGB Lights Instruction Manual

[Home](#) » [V I V O](#) » V I V O MOUNT-KB05GL Clamp on Height Adjustable Keyboard Tray with RGB Lights Instruction Manual 

Contents

- [1 V I V O MOUNT-KB05GL Clamp on Height Adjustable Keyboard Tray with RGB Lights](#)
- [2 Product Information](#)
- [3 Product Usage Instructions](#)
- [4 PACKAGE CONTENTS](#)
- [5 ASSEMBLY STEPS](#)
- [6 Documents / Resources](#)
 - [6.1 References](#)
- [7 Related Posts](#)



V I V O MOUNT-KB05GL Clamp on Height Adjustable Keyboard Tray with RGB Lights



Product Information

Black Clamp-on Height Adjustable Keyboard Tray with RGB Lights

The Black Clamp-on Height Adjustable Keyboard Tray with RGB Lights is a keyboard tray that can be attached to the edge of a desktop. The tray is adjustable in height and features RGB lights that can be powered by a 5V USB power supply. The product has a weight capacity of 11lbs (5kg) and comes with support brackets, slider brackets, clamps, and pads for assembly.

Product Usage Instructions

1. Attach Slider Brackets (C) to Support Brackets (B) using M4x7mm Flat Head Screws (S-A), making sure the countersunk holes on Support Brackets (B) are facing outward. Tighten with a Phillips screwdriver.
2. Assemble Slider Brackets (C) to Keyboard Tray (A) using M5x12mm Screws (S-B), and tighten with a Phillips screwdriver. The slider brackets should protrude from the back of the keyboard tray.
3. Assemble Clamps (D) to Support Brackets (B) at the desired height using M5x8mm Flat Head Screws (S-C). Tighten with a Phillips screwdriver.
4. Place Pads (E) on the underside of each Clamp (D). Place the assembled keyboard mount on the edge of the desktop and tighten Clamps (D).
5. To ensure the keyboard tray assembly is level, do not over-tighten Clamps (D). Slide Keyboard Tray (A) forward/back to the desired position. Plug the cable from Keyboard Tray (A) into a 5V USB power supply.

Make sure not to exceed the weight capacity of the product to avoid serious injury. If any parts are received damaged or defective, please contact the support team for assistance.

SKU: MOUNT-KB05GL

Scan the QR code with your mobile device or follow the link for helpful videos and specifications related to this product.



Instruction Manual

<https://vivo-us.com/products/mount-kb05gl>

GET IN TOUCH | Monday-Friday from 7:00am-7:00pm CST

- help@vivo-us.com
- www.vivo-us.com

Chat live with an agent!

- 309-278-5303

WARNING!

If you do not understand these directions, or if you have any doubts about the safety of the installation, please call a qualified technician. Check carefully to make sure there are no missing or defective parts. Improper installation may cause damage or serious injury. Do not use this product for any purpose that is not explicitly specified in this manual. Do not exceed weight capacity. We cannot be liable for damage or injury caused by improper mounting, incorrect assembly or inappropriate use.

WARNING: CHOKING HAZARD

SMALL PARTS – NOT FOR CHILDREN UNDER 3 YEARS. ADULT SUPERVISION IS REQUIRED.

PACKAGE CONTENTS



A (x1)
Keyboard Tray



B (x2)
Support Bracket



C (x2)
Slider Bracket



D (x2)
Clamp



E (x2)
Pad



S-A (x6)
M4x7mm Flat
Head Screw



S-B (x8)
M5x12mm
Screw



S-C (x6)
M5x8mm Flat
Head Screw

NOTE: SOME HARDWARE INCLUDED MAY NOT BE USED

TOOLS NEEDED



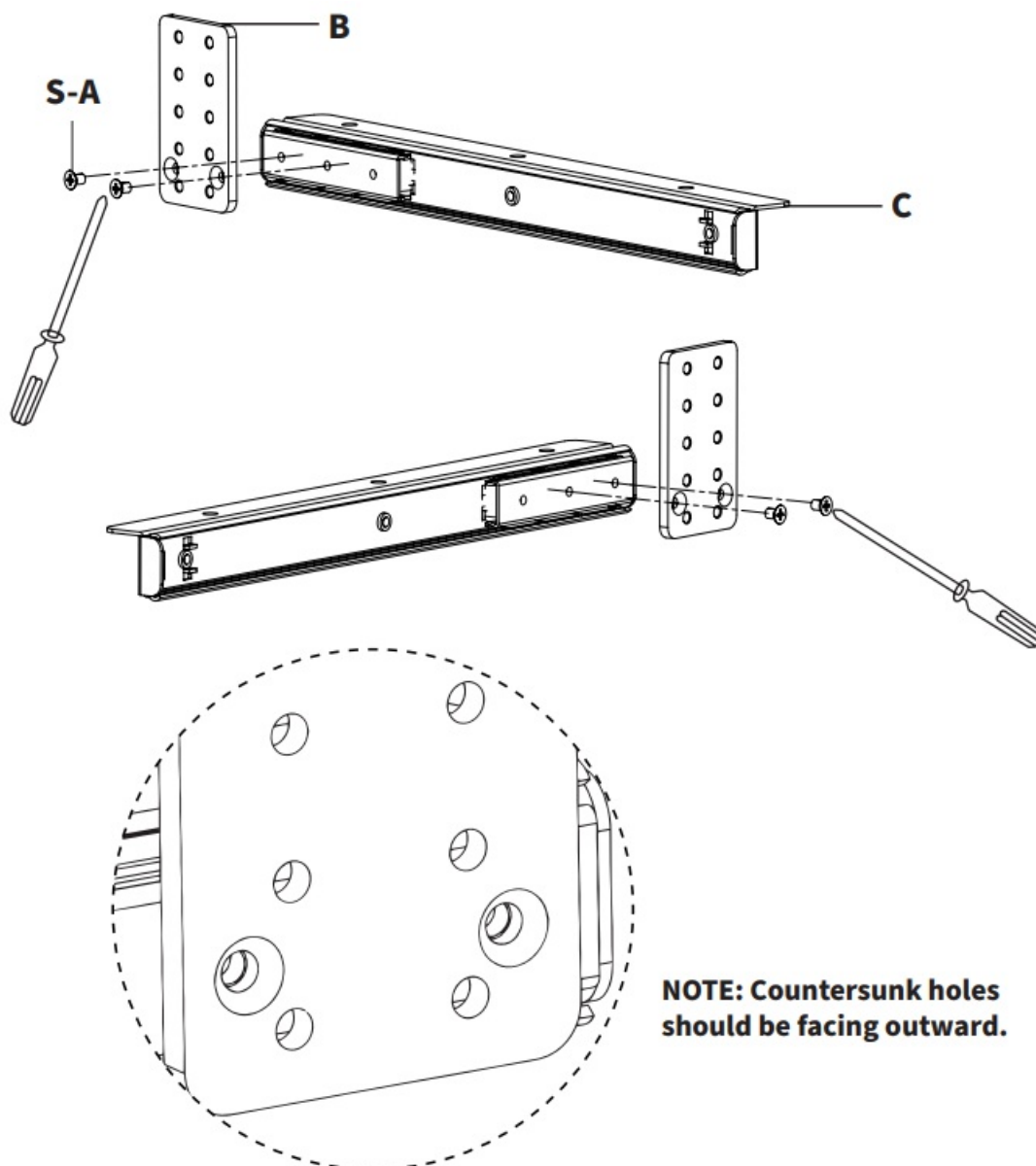
DO NOT EXCEED WEIGHT CAPACITY.

Failure to do so may result in serious injury.

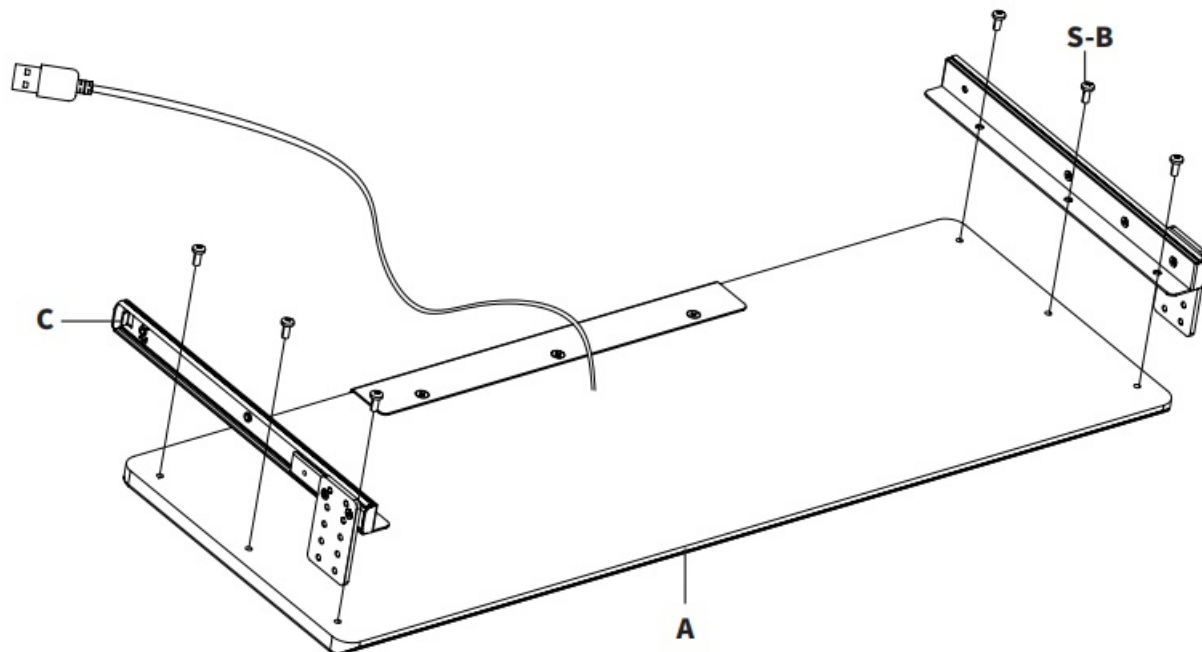


ASSEMBLY STEPS

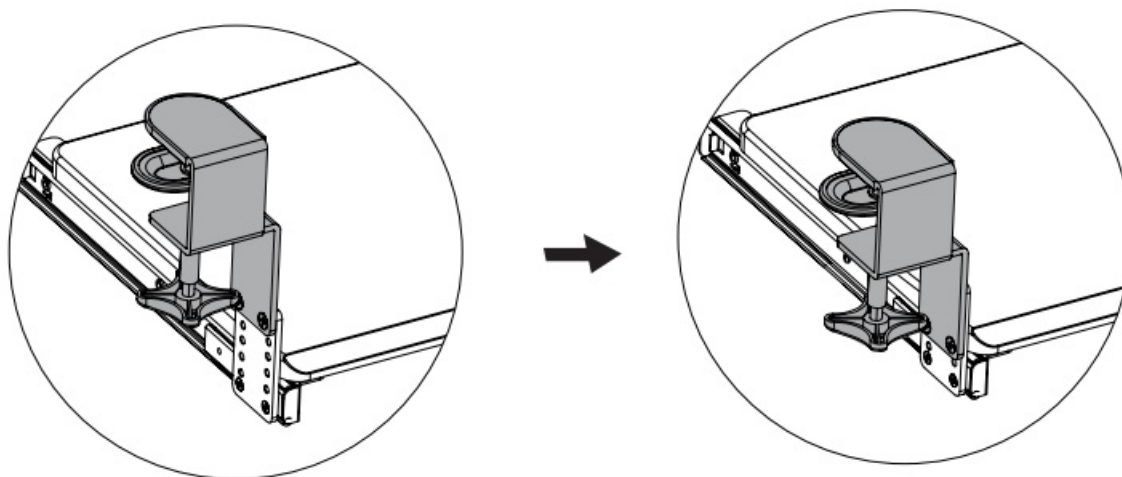
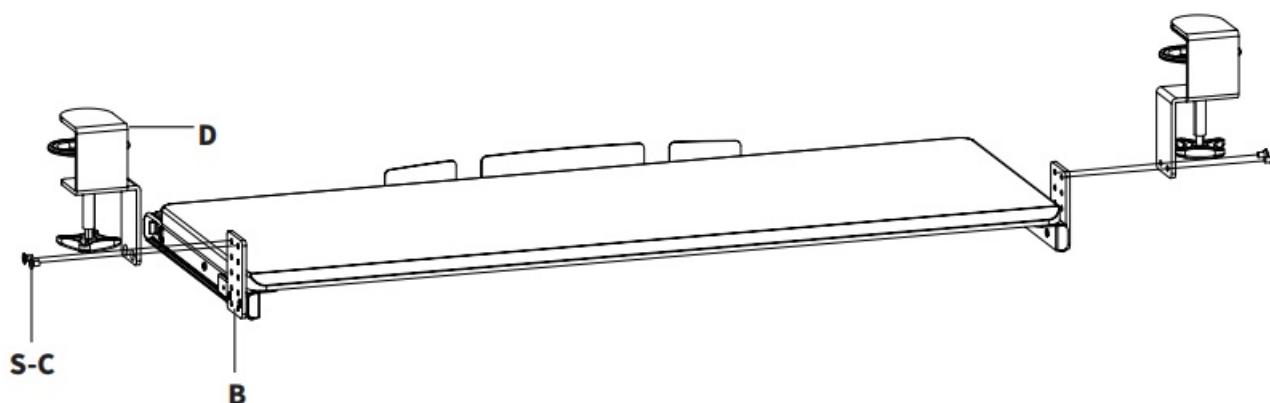
1. Attach Slider Brackets (C) to Support Brackets (B) using M4x7mm Flat Head Screws (S-A), making sure the countersunk holes on Support Brackets (B) are facing outward, as shown below. Tighten with a Phillips screwdriver.



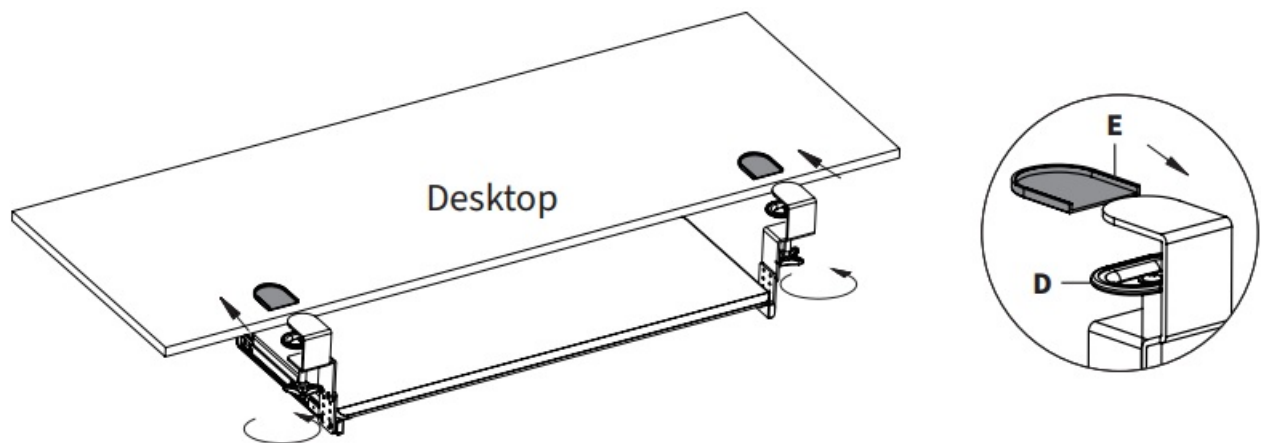
2. Assemble Slider Brackets (C) to Keyboard Tray (A) using M5x12mm Screws (S-B), and tighten with a Phillips screwdriver. The slider brackets should protrude from the back of the keyboard tray



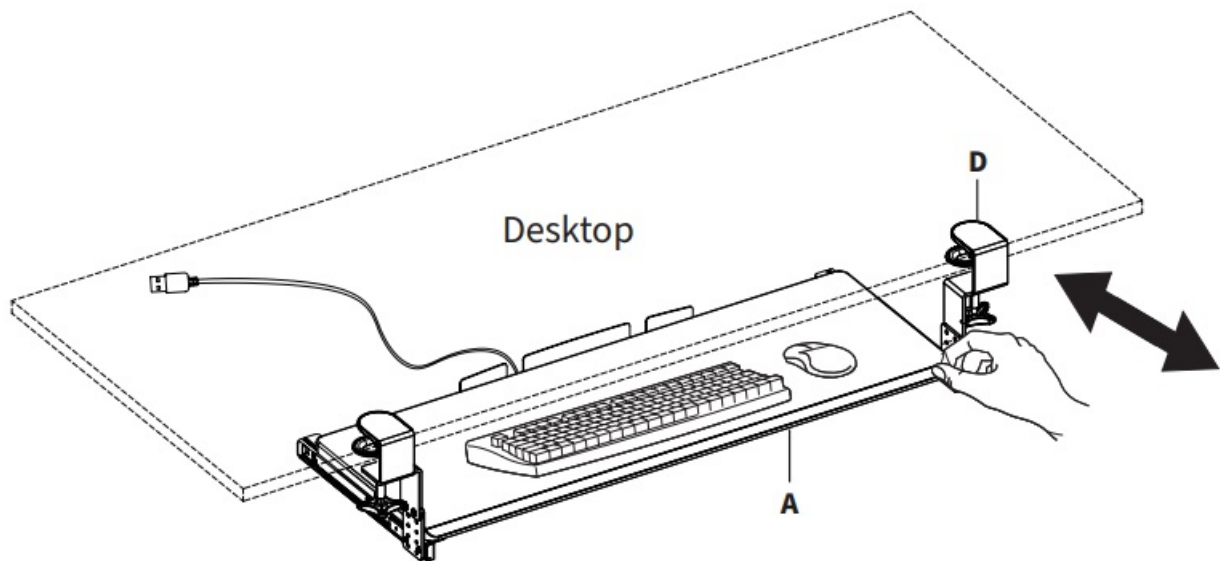
3. Assemble Clamps (D) to Support Brackets (B) at desired height using M5x8mm Flat Head Screws (S-C). Tighten with a Phillips screwdriver.



4. Place Pads (E) on the underside of each Clamp (D). Place assembled keyboard mount on the edge of desktop and tighten Clamps (D).



5. To ensure the keyboard tray assembly is level, do not over-tighten Clamps (D). Slide Keyboard Tray (A) forward/back to desired position. Plug the cable from Keyboard Tray (A) into a 5V USB power supply.



Love your new VIVO setup and want to share?
Tag us in your photo! @vivo_us

Open Monday – Friday 7:00am – 7:00pm CST,
our dedicated support team can offer immediate assistance with rapid response times. If any parts are received damaged or defective, please contact us. We are happy to replace parts to ensure you have a fully functioning product.


- 309-278-5303 AVG. RESOLUTION TIME (within office hrs): 5M 4S
- www.vivo-us.com Chat live with an agent! AVG. RESOLUTION TIME (within office hrs): < 15 M
- help@vivo-us.com

AVG. RESPONSE TIME (within office hrs): 1HR 8M

- 23% within < 15m
- 38% within < 30m
- 61% within < 1hr
- 83% within < 2hr
- 92% within < 3hr

FOR MORE VIVO PRODUCTS, CHECK OUT OUR WEBSITE AT: www.vivo-us.com

Documents / Resources

 <p>VIVO logo and product image of the MOUNT-KB05GL keyboard tray.</p>	<p>V I V O MOUNT-KB05GL Clamp on Height Adjustable Keyboard Tray with RGB Lights [pdf] Instruction Manual</p> <p>MOUNT-KB05GL Clamp on Height Adjustable Keyboard Tray with RGB Lights, MOUNT-KB05GL, Clamp on Height Adjustable Keyboard Tray with RGB Lights, Keyboard Tray with RGB Lights, Tray with RGB Lights</p>
--	--

References

- [🌐 Register a .US.COM domain today!](#)
- [🌐 VIVO - Desks, Monitor Mounting, and More Home & Office Solutions – VIVO - desk solutions, screen mounting, and more](#)
- [🌐 Clamp-on Height Adjustable Keyboard Tray with RGB Lights – VIVO - desk solutions, screen mounting, and more](#)

Manuals+.