

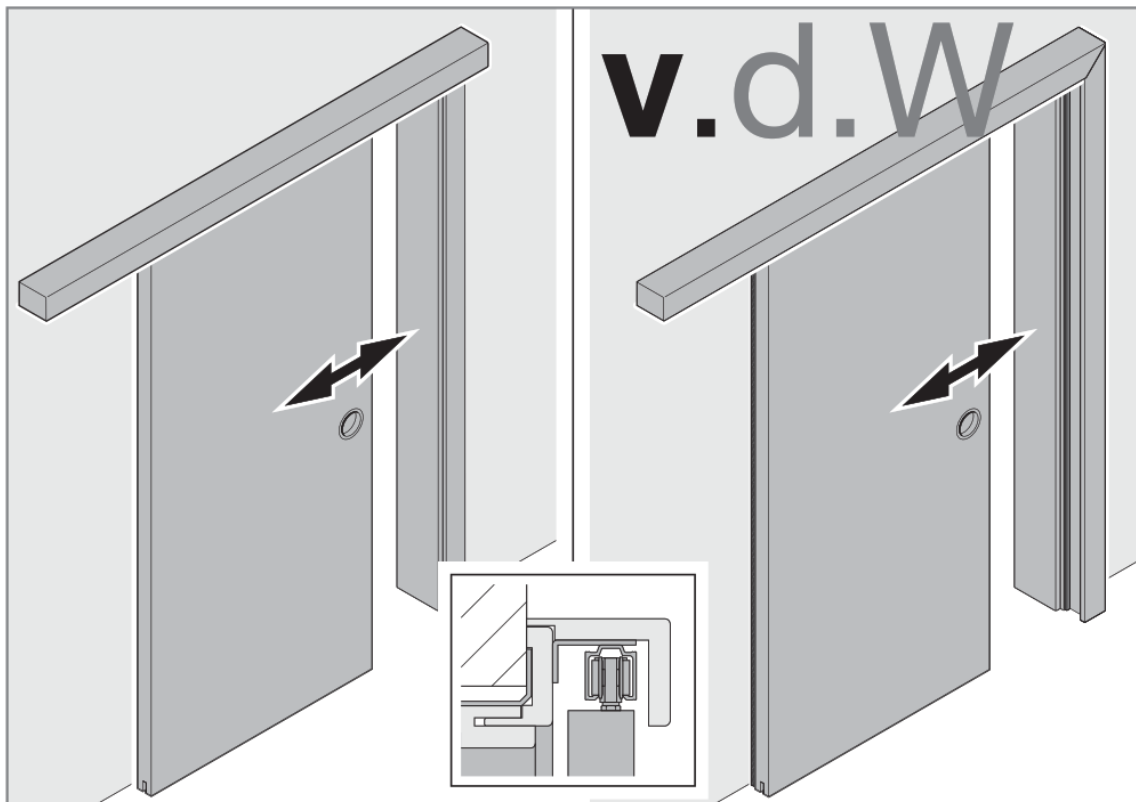


v d W EB068-A Sliding Door Set Running In Front Of The Wall With Frame Instruction Manual

[Home](#) » [v d W](#) » v d W EB068-A Sliding Door Set Running In Front Of The Wall With Frame Instruction Manual 

VDW

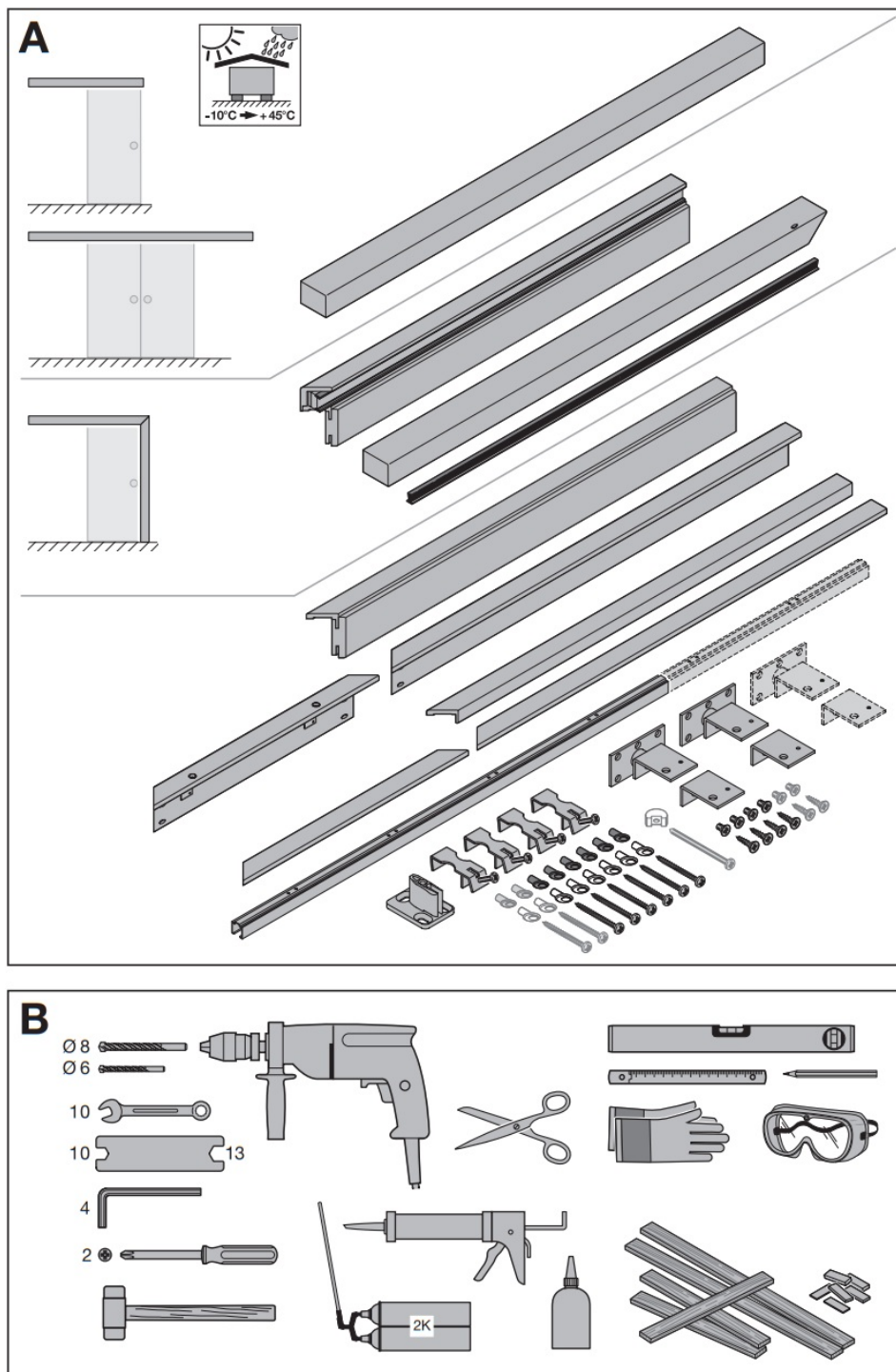
Instructions for Fitting
Sliding door set running in front of the wall with frame



Contents

- 1 EB068-A Sliding Door Set Running In Front Of The Wall With Frame
- 2 About these instructions
- 3 Basic principles
- 4 Fitting
- 5 Fitting by qualified personnel and warranty
- 6 Care and maintenance
- 7 Documents / Resources
- 8 Related Posts

EB068-A Sliding Door Set Running In Front Of The Wall With Frame



unless explicitly permitted. Noncompliance will result in damage compensation obligations. All rights reserved in the event of patent, utility model or design model registration. Subject to changes.

Dear Customer,

We are delighted that you have chosen a quality product from our company.

About these instructions

Read through all of the instructions carefully: they contain important information about the product and fitting. Pay attention to and follow the instructions provided, particularly the safety instructions and warnings.

Please keep these instructions in a safe place and make sure that they are available to all users at all times. These instructions are important documentation for the building files.

Expert fitting and careful maintenance increase the performance, availability and security.

1 .1 Warnings used



The general warning symbol indicates a danger that can lead to injury or death. In the text section, the general warning symbol will be used in connection with the caution levels described below. In the illustrated section, an additional instruction refers back to the explanation in the text.

ATTENTION

Indicates a danger that can lead to damage or destruction of the product.

1 .2 Symbols used

	Important advice to prevent injury to persons and damage to property
	Correct arrangement or activity
	Non-permissible arrangement or activity
	Protection against weather
	Indicates steps in the illustrated section that must be performed in sequence.
	Inspect
	Tighten the screws firmly
	See text section
	Optional

1 .3 Abbreviations used

OFF	Finished floor level
mm	All dimensions in the illustrated section are in mm.

Basic principles

2.1 Sliding door set running in front of the wall with box and rail

1	Single-leaf system with upright threshold
2	Single-leaf system without upright threshold
3	Double-leaf system

2.2 Foaming the sliding door frame

We recommend a 2 component PUR fitting foam for foaming. Suitability should be proven in accordance with the ift guideline. Note the safety instructions as well as the notes on use from the fitting foam manufacturer.

ATTENTION

Foaming the sliding door frame

- ▶ Ensure a solid, clean subsurface free of grease. If necessary, use a primer.
- ▶ Always use at least 3 foam points per frame side, top, centre, bottom. Foam along the entire frame width / wall thickness.
- ▶ For door weights above 60 kg, the foam adhesive surface ratio must be at least 50%.
- ▶ Depending on the requirements and in case of low wall thicknesses, a foam adhesive surface ratio of up to 100% may be required.
- ▶ Also always foam the upper frame corners.
- ▶ In case of a sliding door set running in front of the wall with high or extreme loads, you may also have to foam the frame at the frame crosspiece with the wall lintel.
- ▶ In case of single-leaf (> 1000 mm), heavy or doubleleaf sliding door sets running in front of the wall, additional mechanical connections are required between the frame crosspiece and the wall lintel.

Fitting

3.1 Sliding door set running in front of the wall

Check that the individual frame parts are free of faults and complete, check the dimensions and check that screws are tight before assembling the frame .

- Frame parts (2 ×)
- Frame part header (1 ×)
- Decorative edges to suit frame parts
- Fittings bag
- Sliding door box
- Sliding door rail

NOTE

Processed goods cannot be exchanged.

3.2 Checking fitting situation

- Suitability of the wall type
- Finished level / metre line of the floor

- Door opening sense
- Sliding door rail position

Observe building regulations .

Fitting by qualified personnel and warranty

The supplied products may only be fitted and put into operation by qualified personnel. We do not provide any warranty, as fitting is outside of our sphere of influence. These fitting instructions only provide recommendations, as there are several possibilities for professional and correct fitting. No legal claims can be derived from recommendations.

Putting the door into operation is prohibited until it has been established that the door has been installed in accordance with our specifications and its function has been properly tested. A product's declaration of performance becomes invalid if an alteration to the product is carried out without consultation with us.

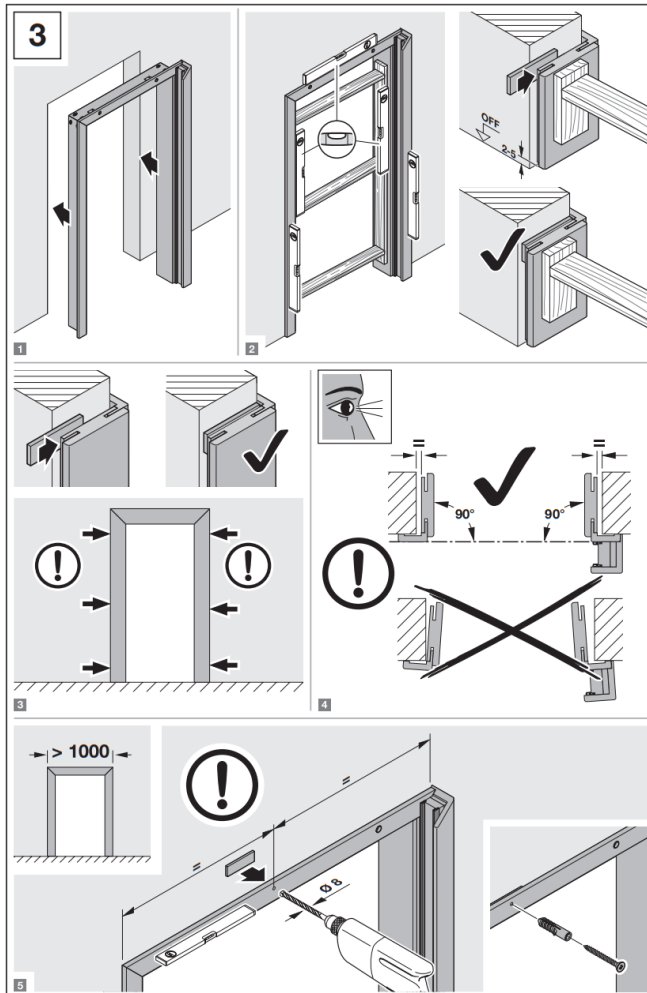
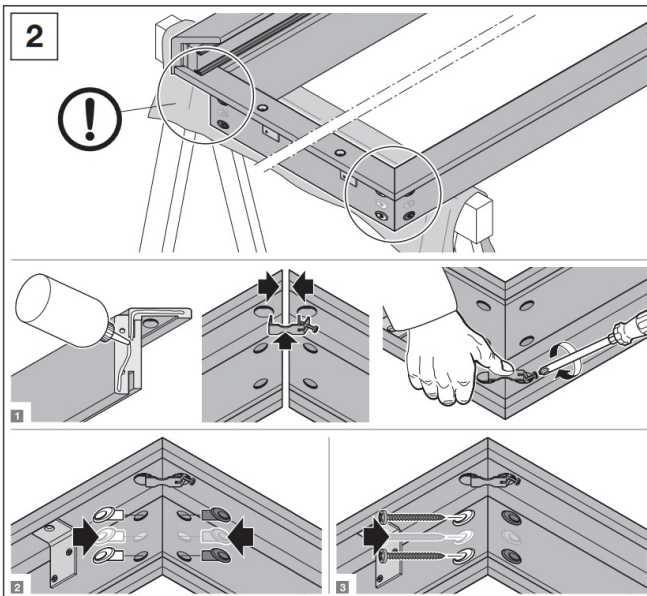
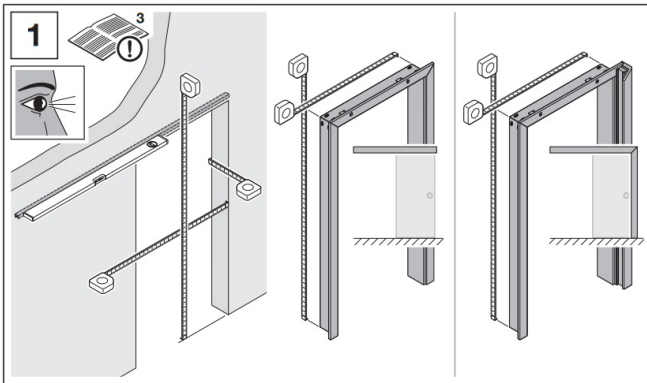
Wood is a natural product with individual characteristics and nuances. It reacts to changes in air humidity, amongst others. The door and frame should be subjected to as few fluctuations in humidity as possible. We therefore advise against fitting in rooms with more than 60 % relative air humidity (take note of humidity in new buildings).

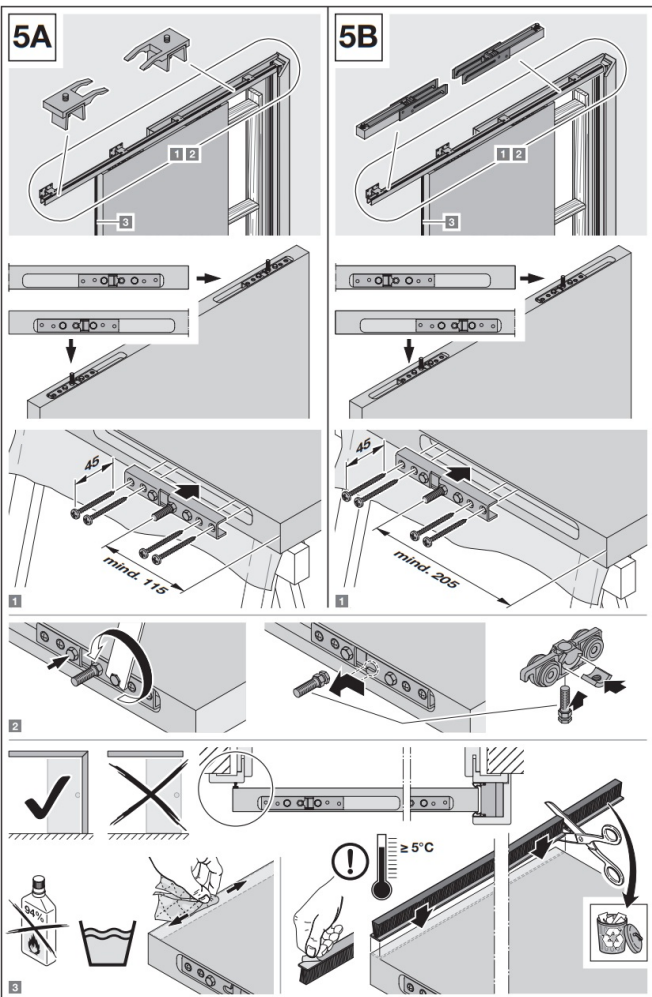
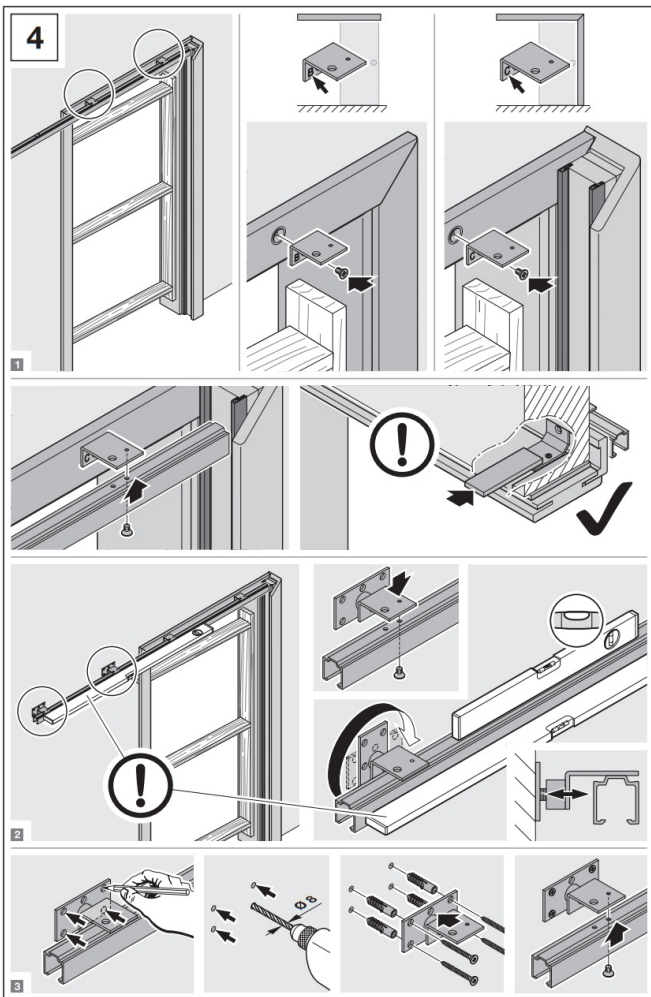
Care and maintenance

A slightly damp cloth, chamois or a lint-free microfibre cloth without using special detergents is enough to maintain the high-quality surfaces of doors and frames. This allows normal household dirt (e.g. fingerprints or water splashes) to be easily removed. Use lukewarm water with a squirt of washing-up liquid for stubborn dirt. Then dry off well. Do not use any abrasive or caustic solvent-based detergents!

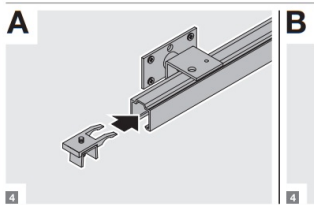
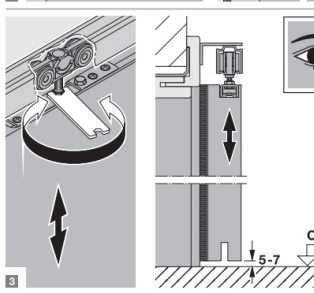
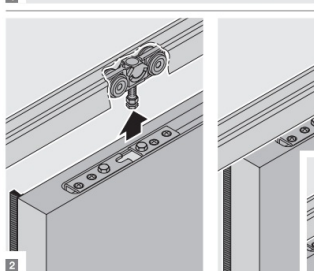
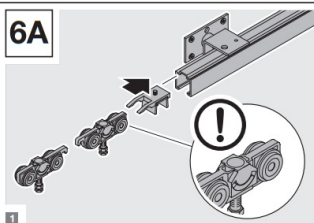
All important functional parts must be visually inspected on a regular basis (min. 1 × annually) for fastening and function. Identified defects (e.g. loose screws, damaged or missing seals, incorrectly set or stiff hinges) must be promptly addressed.

Please ask your dealer for further processing, maintenance and care instructions and for certificates and verifications.

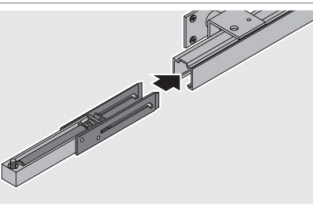
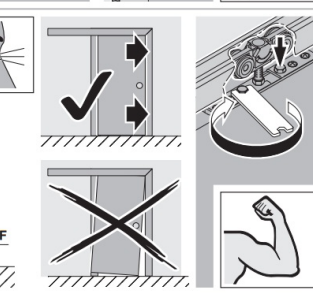
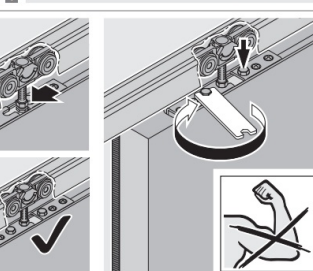
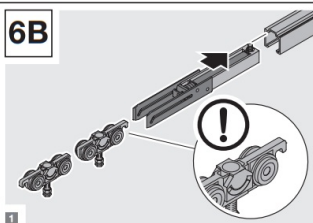




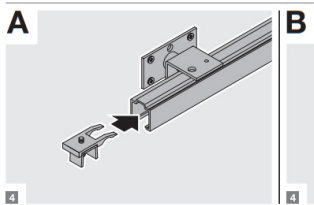
6A



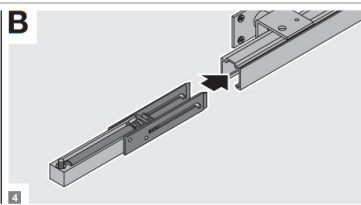
6B



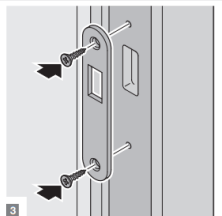
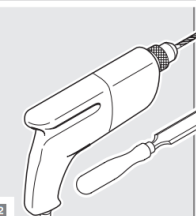
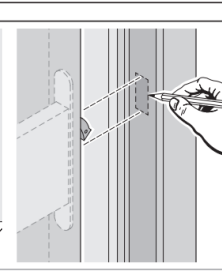
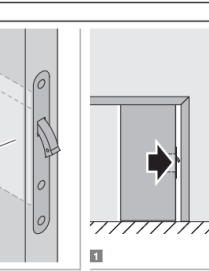
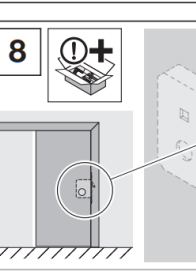
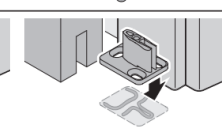
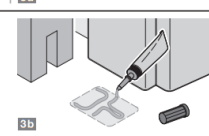
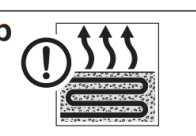
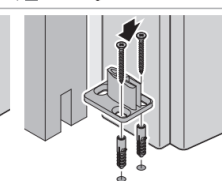
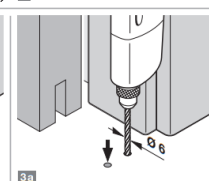
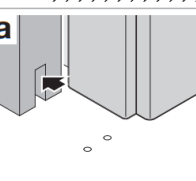
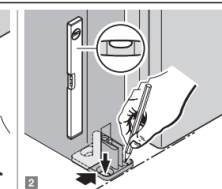
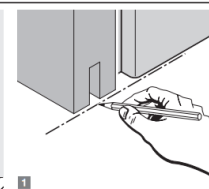
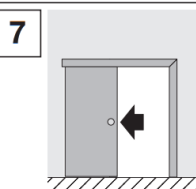
A



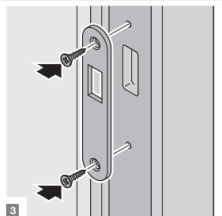
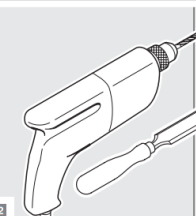
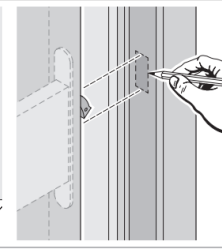
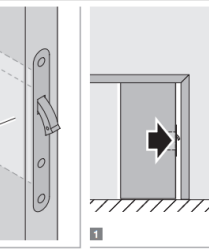
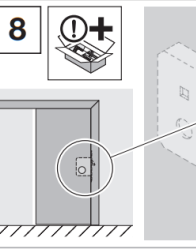
B



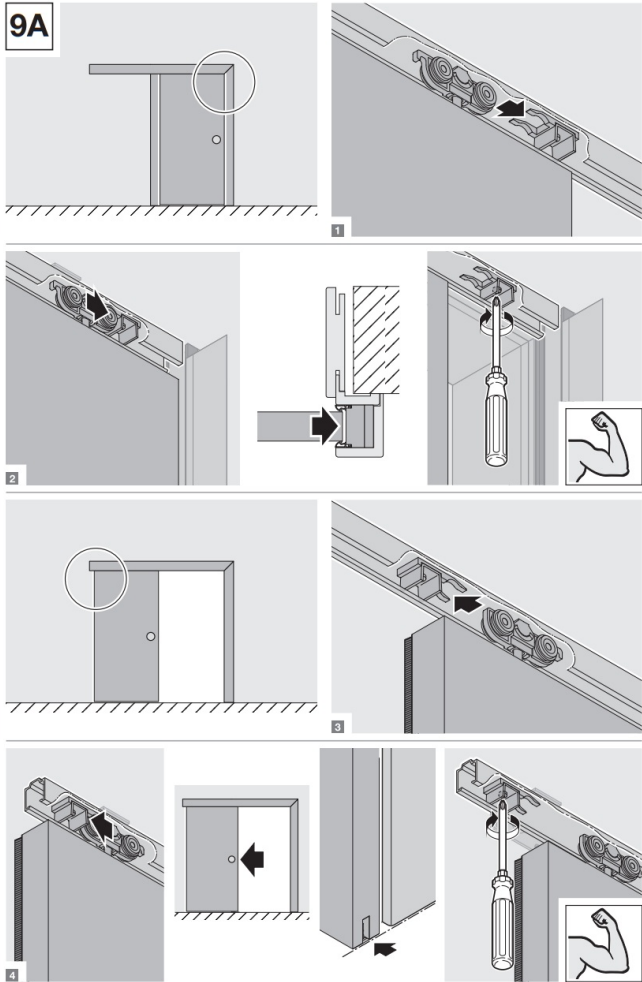
7



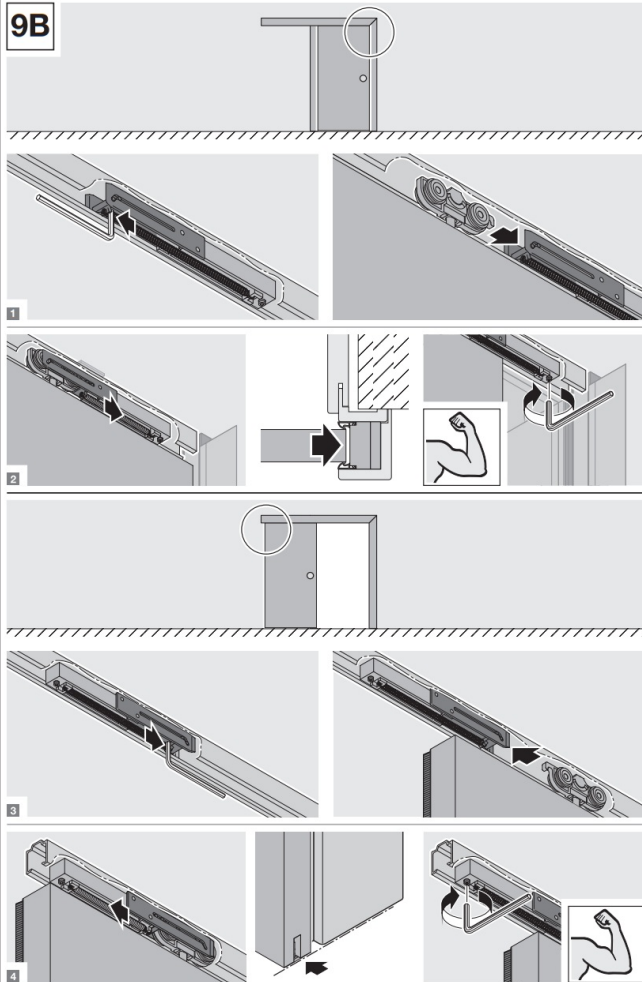
8

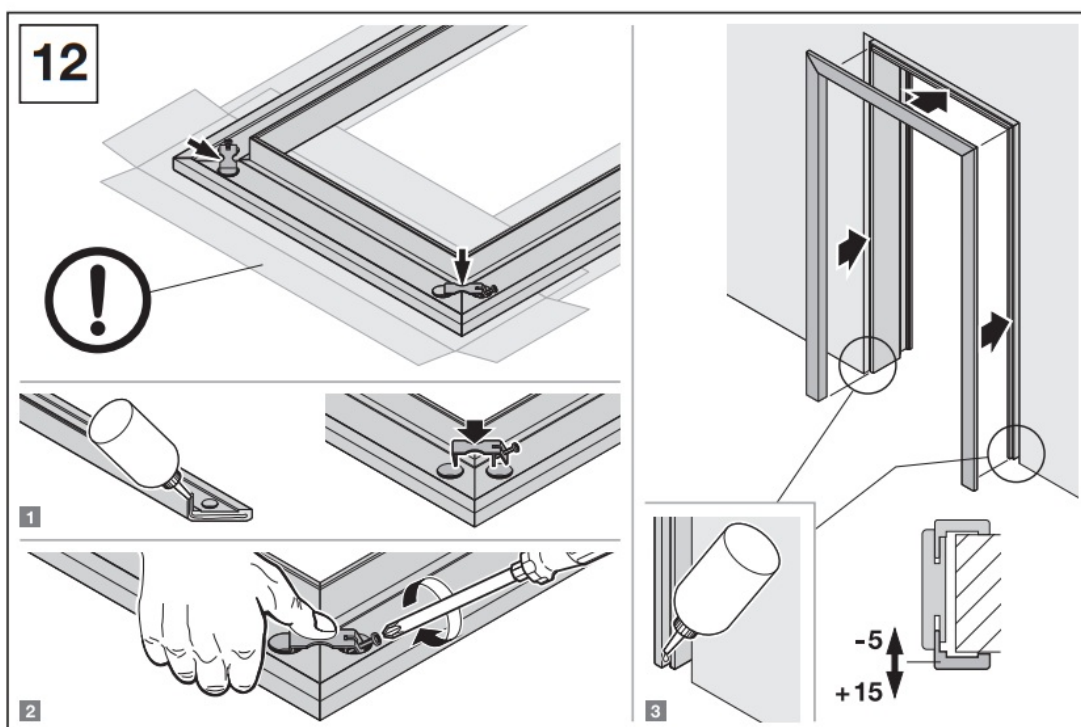
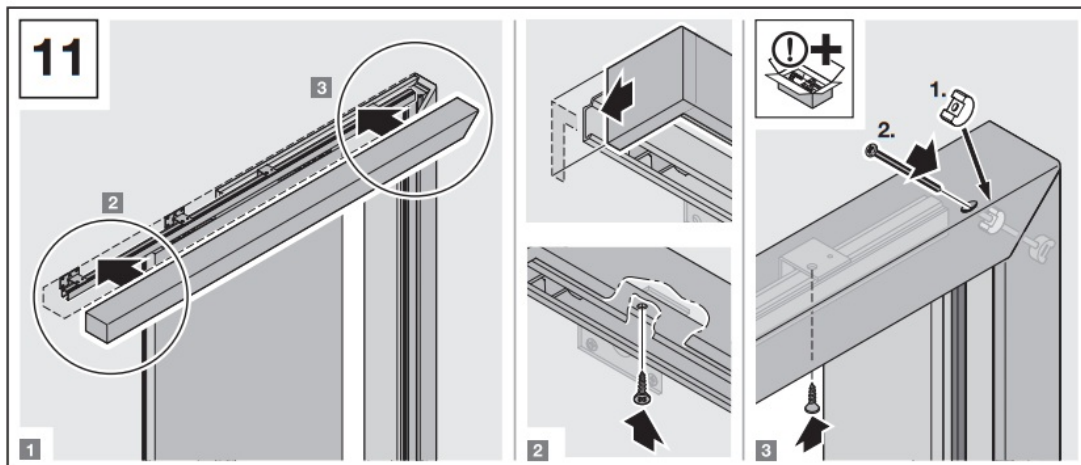
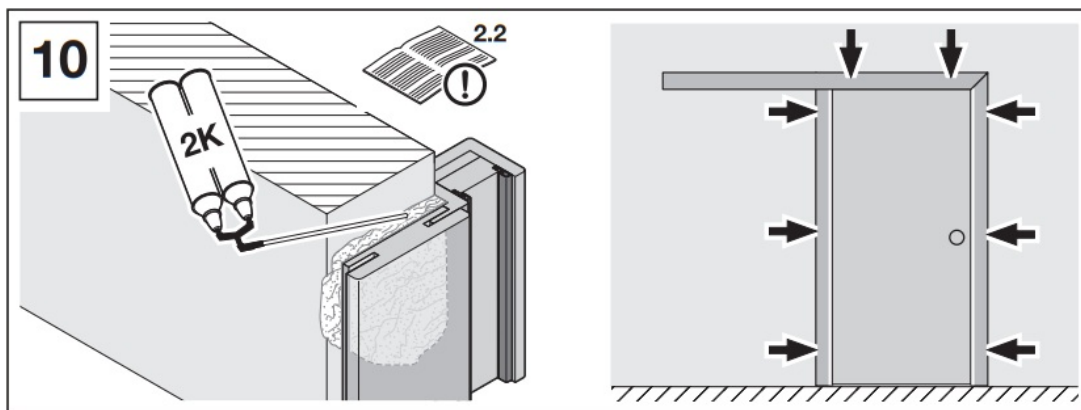


9A




9B





EB068-A RE / Stand: 01.2023 / Druck: 01.2023

Documents / Resources

	<p>v d W EB068-A Sliding Door Set Running In Front Of The Wall With Frame [pdf] Instruction Manual</p> <p>EB068-A Sliding Door Set Running In Front Of The Wall With Frame, EB068-A, Sliding Door Set Running In Front Of The Wall With Frame, The Wall With Frame, With Frame</p>
---	--