



## UWELL CALIBURN GK3 Pod System User Manual

[Home](#) » [UWELL](#) » UWELL CALIBURN GK3 Pod System User Manual 

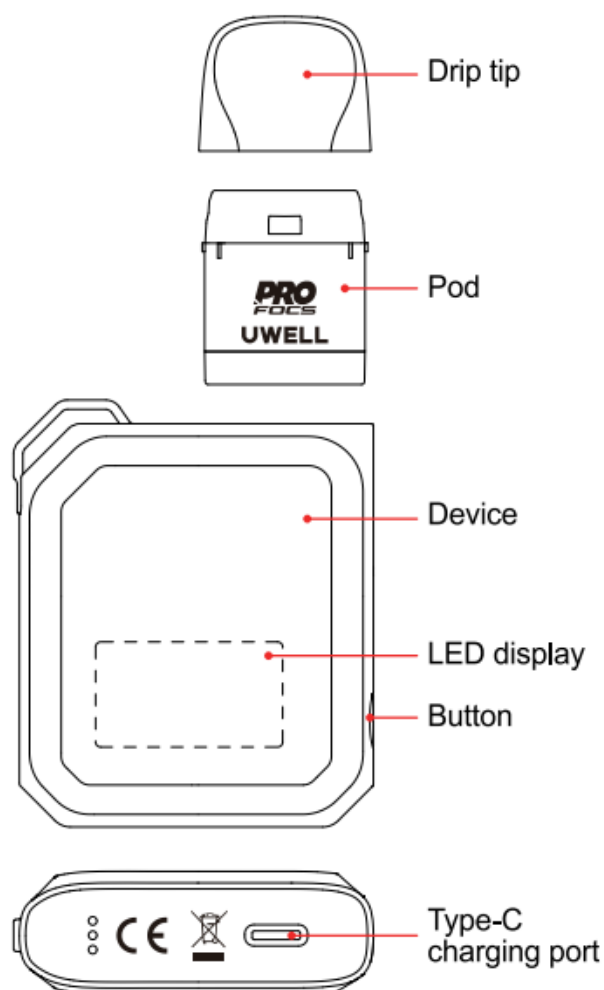
UWELL CALIBURN GK3 Pod System User Manual



## Contents

- [1 Illustration](#)
- [2 Quick Guide](#)
- [3 Specifications](#)
- [4 Instructions](#)
- [5 Airflow adjustment](#)
- [6 Turn on/off](#)
- [7 Turn on/off the backlight of the LED display \(standby\)](#)
- [8 Vaping](#)
- [9 Puffs record](#)
- [10 Power Adjustment](#)
- [11 Battery level indication](#)
- [12 Charging](#)
- [13 Protection and indication](#)
- [14 Warm Tips](#)
- [15 Documents / Resources](#)
  - [15.1 References](#)
- [16 Related Posts](#)

## Illustration



## Quick Guide

1. Take the pod off the device and remove the insulating film from the bottom, then insert the pod into the device.
2. Remove the drip tip and fill the e-liquid through the filling port. Put the drip tip back after the filling and let the

pod sit for 10 minutes.

3. Press the button 5 times in 2 seconds to turn on the pod system, take a draw to start vaping.

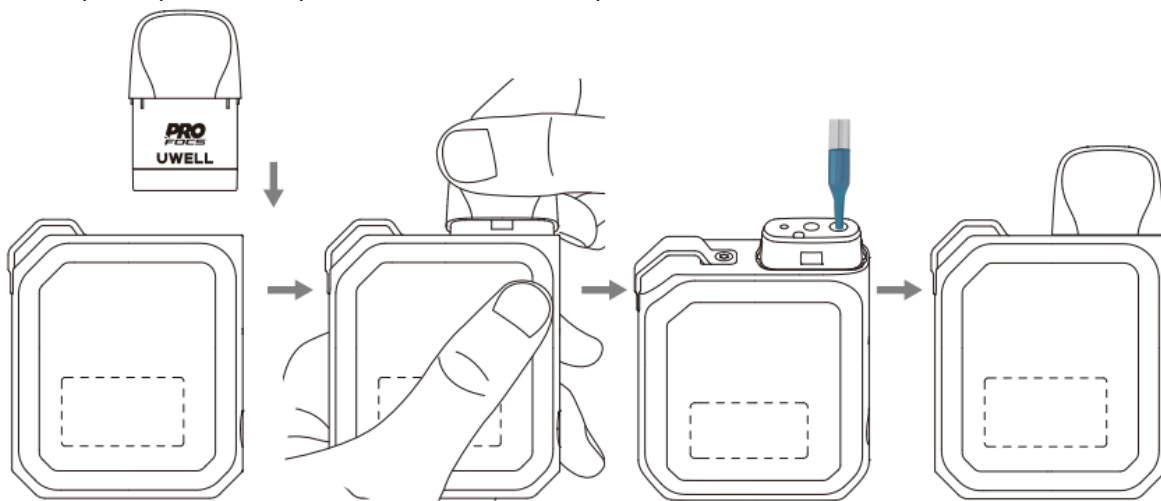
## Specifications

- **Materials:** PCTG, PC+ABS
- **Dimensions:** 74.8 mm x 49.2mm x 17.1 mm
- **Net Weight:** 52 g
- **E-liquid Capacity:** 2 ml
- **Output Power:** Maximum 25 W
- **Pod Specifications:**
  - Feral Meshed 0.6  $\Omega$  CALIBURN G3 Integrated Coil Cartridge
  - Feral Meshed 0.9  $\Omega$  CALIBURN G3 Integrated Coil Cartridge
- **Battery Capacity:** 900 mash

## Instructions

### Pod filling and replacement

- Take the pod off the new device for the first filling, then remove the insulating film on the bottom of the pod.
- Remove the drip tip from the pod and fill the pod with e-liquid.
- Put the drip tip back.
- Insert the pod into the device.
- For pod replacement, please remove the used pod and insert a new one.

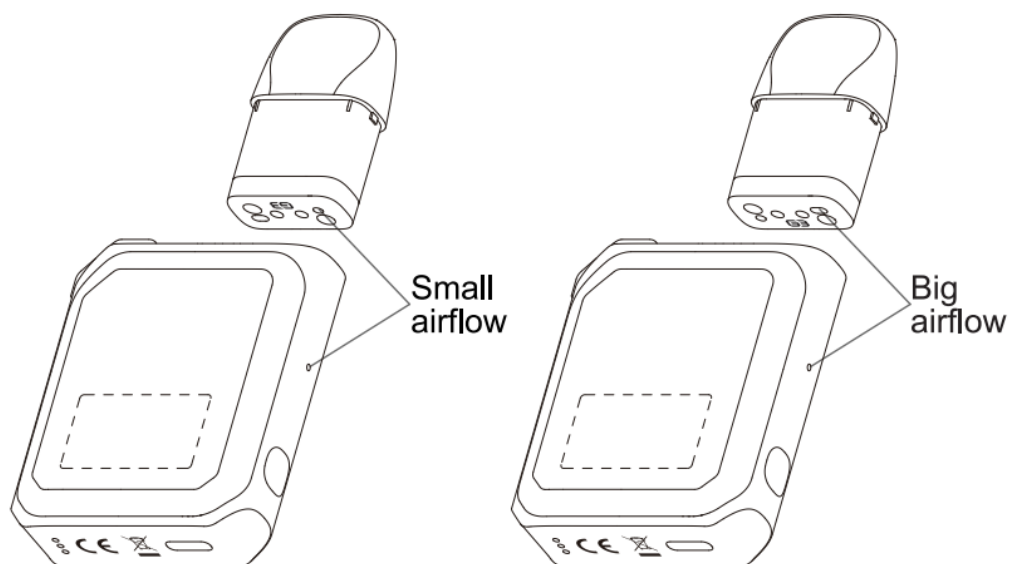


### Attention:

- Insert the nozzle of the e-liquid bottle into the filling port to fill the pod. Do not fill the e-liquid through the airway in the middle.
- Please make sure the drip nozzle is fully inserted into the filling port before the filling start.
- Please put the drip tip back as soon as the filling is done and make sure it is properly installed to prevent e-liquid leakage.
- Let the pod sit for 10 minutes after the first filling to avoid coil burning.
- Please make a timely refilling when the e-liquid is under the MIN level.

## Airflow adjustment

Insert the pod into the device in different directions to switch between the big airflow and the small airflow.



## Turn on/off

Press the button 5 times within 2 seconds to turn on/off the device, the LED display flashes 3 times and the device vibrates once.



## Turn on/off the backlight of the LED display (standby)

**a. Turn on:** The backlight will be on while charging or turning on the device. When the backlight is off (standby), you can press the button once to turn it on.

**b. Turn off:** When the backlight is on, you can press the button once to turn it off. The backlight will be off after 20 seconds without any operation while the screen displays UI normally.



## Vaping

When the device is on, please draw to vape.

## Puffs record

**a.** The device will only record puffs that last over 0.5 seconds. The puffs that last less than 0.5 seconds will not be

counted.

**b.** The largest number of records is 9999, and the recorded numbers will return to 0 when exceeding 9999.

**c.** Press the button 4 times in 2 seconds to clear the recorded numbers of puffing manually.



## Power Adjustment

**a.** Press the button 3 times in 2 seconds to enter into power adjustment mode. The power that displays on the screen will flash during the adjustment process.

**b.** Press the button to choose a preferred power among the corresponding power range, or you can hold the button to adjust the power quickly, the value of the power will be displayed circularly while adjusting.

**c.** Wait 3 seconds or take a draw to confirm your selection, then the device will exit the power adjustment mode and the power displayed on the screen will stop flashing.

Compatible Cartridges	Power Range
0.6 $\Omega$ CALIBURN G3 Integrated Coil Cartridge	5 W-25 W
0.9 $\Omega$ CALIBURN G3 Integrated Coil Cartridge	5W-15 W
1.2 $\Omega$ CALIBURN G3 Integrated Coil Cartridge	5 W-11 W

## Battery level indication

The LED display will show the current battery level on the upper right corner.

Battery Level	Display on the screen
Over 80%	5 bars
60%~80%	4 bars
40%~60%	3 bars
20%~40%	2 bars
1%~20%	1 bar
Less than 1%	Low battery, the device will stop outputting.

## Charging

Connect the device to a power source through a Type-C charging cable, and then the device will vibrate twice to indicate charging and display the dynamic charging icon (upper right corner). The device will vibrate once and display the charging icon of 5 bars when the charging is done. The device will vibrate once when you pull out of the charging cable.

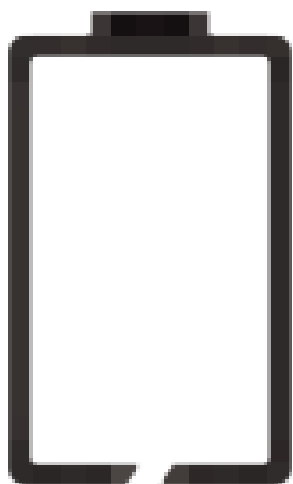


## Protection and indication

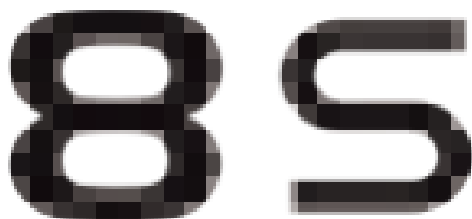
**a. Short-circuit protection:** When short-circuit occurs, the short-circuit icon will flash 4 times; the device will vibrate 4 times and stop outputting.



**b. Low voltage protection:** When the power is low, the low-voltage icon will stay on; the device will vibrate twice and stop outputting.



**c. Overtime protection:** The overtime icon will flash 4 times to indicate an over-8 second vaping; the device will vibrate twice and stop outputting.



**d. Open-circuit protection:** When an open-circuit occurs under a no pod or disconnection situation, the open-circuit icon will flash 4 times; the device will vibrate twice and stop outputting.




## Warm Tips

1. Please charge with the certified power adaptor (5V/2A) and USB cable.
2. Please remove the pod from the device and store it separately when you travel by air, for the air pressure change may cause leakage.
3. Avoid high temperature, low temperature, flammables, explosives, water, and humid environment during the use or storage of the product. Please do not keep the product with hard objects to avoid damage. Please charge the device at least once a month.



---

## Documents / Resources

	<p><a href="#">UWELL CALIBURN GK3 Pod System</a> [pdf] User Manual GK3, CALIBURN GK3 Pod System, CALIBURN GK3, Pod System, System</p>
--	---

## References

- [User Manual](#)

[Manuals+](#), [Privacy Policy](#)

This website is an independent publication and is neither affiliated with nor endorsed by any of the trademark owners. The "Bluetooth®" word mark and logos are registered trademarks owned by Bluetooth SIG, Inc. The "Wi-Fi®" word mark and logos are registered trademarks owned by the Wi-Fi Alliance. Any use of these marks on this website does not imply any affiliation with or endorsement.