



UTV Stereo UTVS-XPDT-TWT-ADPT Polaris Xpedition Tweeter Adapters Installation Guide

[Home](#) » [UTV Stereo](#) » UTV Stereo UTVS-XPDT-TWT-ADPT Polaris Xpedition Tweeter Adapters Installation Guide



Contents

- [1 UTV Stereo UTVS-XPDT-TWT-ADPT Polaris Xpedition Tweeter Adapters](#)
- [2 Product Usage Instructions](#)
- [3 POLARIS XPEDITION TWEETER ADAPTERS](#)
- [4 PARTS LIST](#)
- [5 RECOMMENDED PRODUCTS](#)
- [6 FAQ](#)
- [7 Documents / Resources](#)
 - [7.1 References](#)
- [8 Related Posts](#)



UTV Stereo UTVS-XPDT-TWT-ADPT Polaris Xpedition Tweeter Adapters



Product Specifications:

- Product Name: POLARIS XPEDITION TWEETER ADAPTERS
- Part Number: UTVS-XPD-TWT-ADPT
- Includes: Tweeter Adapters x2, Tweeter Harnesses x2, Black Buttonhead Screws x2

Product Usage Instructions

Removal of OEM Tweeter

1. Remove the tweeter grille carefully.
2. Locate and remove the two screws holding the OEM tweeter in place.
3. Gently detach the OEM tweeter from its plug. Unplug it from the OEM plug.

Mounting Process

1. Remove the bottom metal clip from the tweeter mount.
2. Position the tweeter mount over the OEM housing and mark the outline of the hole needed for installation.
3. Cut down the marked area to create room for the tweeter.
4. Thread the UTV Stereo onto the mount. Note that a locking ring is not required.
5. Attach the tweeter adapter to the OEM Tweeter plug securely.
6. Place the tweeter and mount onto the vehicle and fasten it using the provided black buttonhead screw.

POLARIS XPEDITION TWEETER ADAPTERS

PART #: UTVS-XPD-TWT-ADPT

PARTS LIST

- Tweeter Adapters x2
- Tweeter Harnesses x2

Mounting Hardware:

- Black Buttonhead Screws x2

RECOMMENDED PRODUCTS

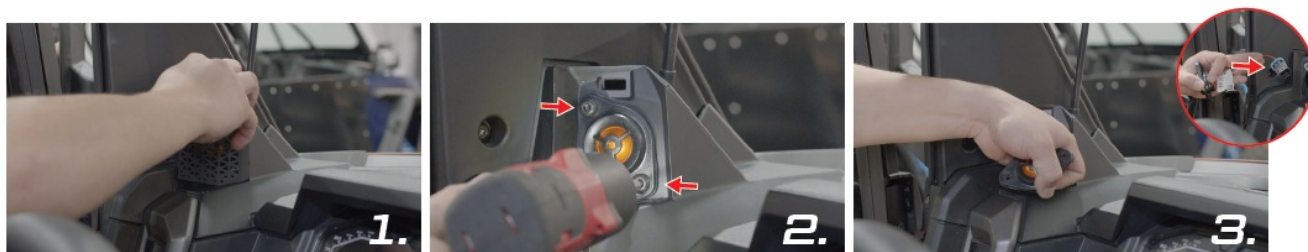
1.



Remove the tweeter grille

2. Remove the two screws shown here Remove the OEM tweeter

3. *Make sure to unplug from OEM plug



4. Remove the bottom metal clip

5. Place the tweeter mount over the OEM housing and mark the outline of the hole as shown

6. Trim down the area you marked to make room for the tweeter



7. Thread the UTV Stereo onto the mount *Locking ring is not needed

8. Attach the tweeter adapter to the OEM Tweeter plug

9. Set the tweeter and mount onto the vehicle and secure it using the included black button head screw



10. Repeat for the other side



We are here to help! Reach out to us at info@utvstereo.com or call us at 480.616.2299

FAQ

Q: Are PRO SERIES 1 TWEETERS included with the POLARIS XPEDITION TWEETER ADAPTERS?

A: No, PRO SERIES 1 TWEETERS are recommended products and sold separately (PART #: UTVS-PTW).

Documents / Resources



[UTV Stereo UTVS-XPD-TWT-ADPT Polaris Xpedition Tweeter Adapters](#) [pdf] Installation Guide
UTVS-XPD-TWT-ADPT, UTVS-XPD-TWT-ADPT Polaris Xpedition Tweeter Adapters, UTVS-XP
D-TWT-ADPT, Polaris Xpedition Tweeter Adapters, Xpedition Tweeter Adapters, Tweeter
Adapters

References

- [User Manual](#)

[Manuals+](#), [Privacy Policy](#)

This website is an independent publication and is neither affiliated with nor endorsed by any of the trademark owners. The "Bluetooth®" word mark and logos are registered trademarks owned by Bluetooth SIG, Inc. The "Wi-Fi®" word mark and logos are registered trademarks owned by the Wi-Fi Alliance. Any use of these marks on this website does not imply any affiliation with or endorsement.