



# UTOPIA Spyder Rt Built In Driver Backrest Instruction Manual

[Home](#) » [UTOPIA](#) » UTOPIA Spyder Rt Built In Driver Backrest Instruction Manual 

## Contents

- [1 UTOPIA Spyder Rt Built In Driver Backrest](#)
- [2 Product Information](#)
- [3 Built-in Driver Backrest with Quickest for SPYDER](#)
- [4 SIMPLE BOLT ON INSTALLS IN MINUTES](#)
- [5 Utopia Built-in Driver Backrest Installation with Quickest For all SPYDER RT 2020 and Newer](#)
- [6 Documents / Resources](#)
  - [6.1 References](#)
- [7 Related Posts](#)



## UTOPIA Spyder Rt Built In Driver Backrest

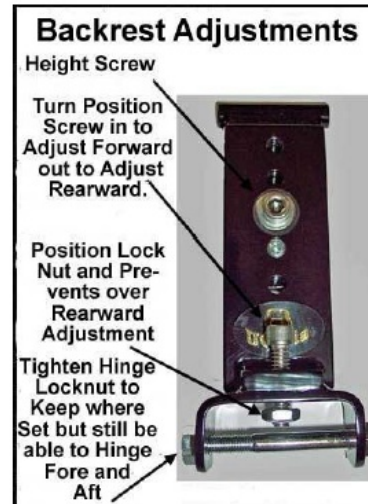


## Product Information

The Built-in Driver Backrest with Quickest is designed for SPYDER RT motorcycles manufactured in 2020 and newer. This backrest is integrated into the seat, without any obstructing bars that may hinder the driver's or

passenger's comfort. It features a folding mechanism that allows easy access for passengers and enhance safety by moving out of the way during sudden stops. The backrest can be adjusted in height and position to promote an upright sitting posture and prevent driver fatigue. It is concaved and pivots at the top to ensure no uncomfortable edges dig into the driver's back. The backrest is well-padded with foam, measuring only 1 1/2 inches thick, which minimizes the impact on seating space. Additionally, it comes with a convenient pouch and shoulder strap, enabling it to be converted into a shoulder bag. The installation process is the king on straightforward and can be completed in minutes.

### **Built-in Driver Backrest with Quickest for SPYDER**



A driver's backrest that becomes part of your seat. No bars in the way of the driver's hips and legs or passenger's legs. Folds forward to ease passenger getting on or off and adds to safety by getting out of the way in sudden stops. Has up and down height adjustments, as well as driver seating position, back and forth, to help driver sit upright to avoid slouching, a big factor in driver fatigue. Included is our Quickest, that allows you to pull up on Backrest to remove.

Backrest is concaved and pivots at the top of bar as you lean against it so no uncomfortable edges dig into your back. Well padded with foam, but only 1 1/2" thick which takes up less seating room than most other driver backrests. Comes with a handy pouch and shoulder strap to enable conversion to a shoulder bag.

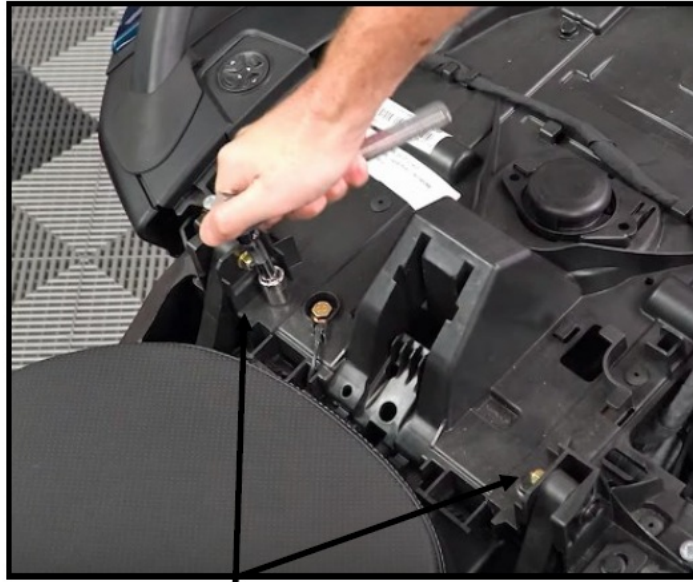
### **SIMPLE BOLT ON INSTALLS IN MINUTES**

We also have backrests available for most other motorcycle stock seats. We strive to closely match the material and stitching on each seat.

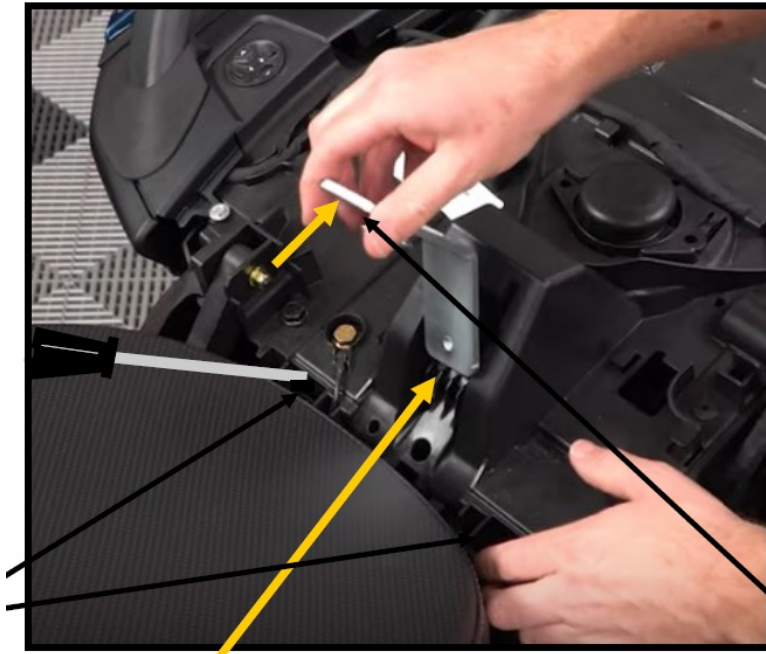
1351 S. Cleveland Massillon Rd, Unit A, Copley, OH 44321 330-576-3024 email: [utopia@utpr.com](mailto:utopia@utpr.com) website: [www.utpr.com](http://www.utpr.com)

### **Utopia Built-in Driver Backrest Installation with Quickest For all SPYDER RT 2020 and Newer**

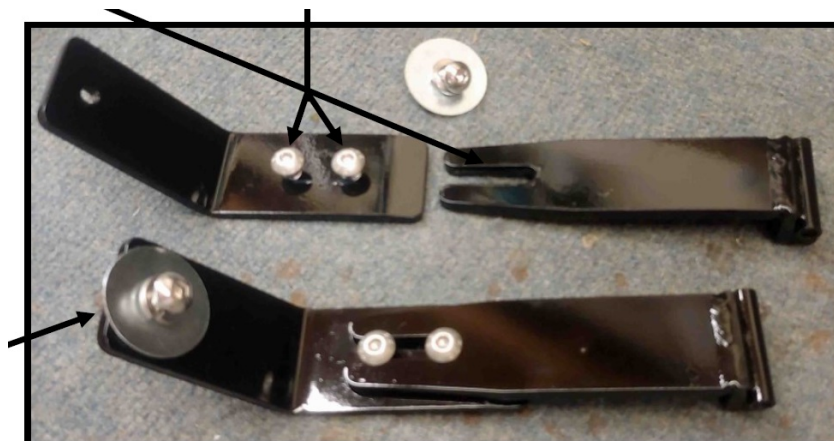
**Step 1** To Remove Passenger Seat, Push Ignition Key Down and Turn Clockwise. Lift front of Driver Seat to Open. Look Under Driver Seat toward Passenger Seat. Push Tabs on each side to Release Passenger Seat. Lift front of Passenger Seat and Pull Forward to Remove. Disconnect the Passenger Seat Wiring Harness if Seat is Heated.



**Step 2** Loosen the 2 bolts on the Seat Tray, with 13mm socket, back 2 full turns, or so, but not all the way out.



**Step 3** Slide off Utopia Upright set aside to install indoor not adjust these screws, we set to allow Backrest to slide in and out.



**Step 4** Insert Utopia Mounting Bracket into receiver slot, as far as you can, on top of the 1" Square Bar under Seat Tray. With some force push back, or hit top of Mounting Bracket popping it in place on top of the 1" Square Bar.

**NOTE** If you have trouble getting Mounting Bracket on top of the Square Bar, you can Insert screw driver in one of the 2 squareholes, and pry down on the 1" Square Bar, inside hole.



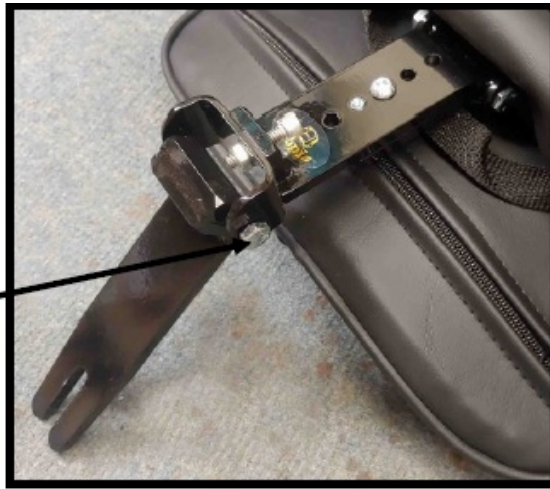
**Step 5** Line up Hole in Mounting Bracket with Hole on bike. Insert Bolt with Lock Washer and Fender Washer, through hole into threaded hole in Mounting Bracket and tighten snugly, but do not over tighten. Tighten Bolts in Step 2. Finally, Slide Utopia Upright with Utopia Driver Backrest into slit in seat




Adjust for Comfort and take a Ride.

**Step 6** Reinstall Passenger Seat.

**Step 7** Attach Top Bar on back of Backrest, to Tube on Upright with 2 1/4" bolt furnished. (Install Upright with TUBE to the front and STOP to the rear.



## Documents / Resources

	<p><a href="#">UTOPIA Spyder Rt Built In Driver Backrest</a> [pdf] Instruction Manual Spyder Rt Built In Driver Backrest, Spyder Rt, Built In Driver Backrest, Driver Backrest, Backrest</p>
---	--

## References

- [UTOPIA Products](#)

Manuals+.