



UTILITECH SFDC-1050FB 42-IN High-Velocity Belt-Drive Drum Fan Instruction Manual

[Home](#) » [UtiliTech](#) » UTILITECH SFDC-1050FB 42-IN High-Velocity Belt-Drive Drum Fan Instruction Manual

Contents [[hide](#)]

- [1 UTILITECH SFDC-1050FB 42-IN High-Velocity Belt-Drive Drum Fan](#)
- [2 PACKAGE CONTENTS](#)
- [3 HARDWARE CONTENTS](#)
- [4 SAFETY INFORMATION](#)
- [5 PREPARATION](#)
- [6 ASSEMBLY INSTRUCTIONS](#)
- [7 OPERATING INSTRUCTIONS](#)
- [8 CARE AND MAINTENANCE](#)
- [9 TROUBLESHOOTING](#)
- [10 WARRANTY](#)
- [11 REPLACEMENT PARTS LIST](#)
- [12 Documents / Resources](#)
- [13 Related Posts](#)



UTILITECH SFDC-1050FB 42-IN High-Velocity Belt-Drive Drum Fan



ATTACH YOUR RECEIPT HERE

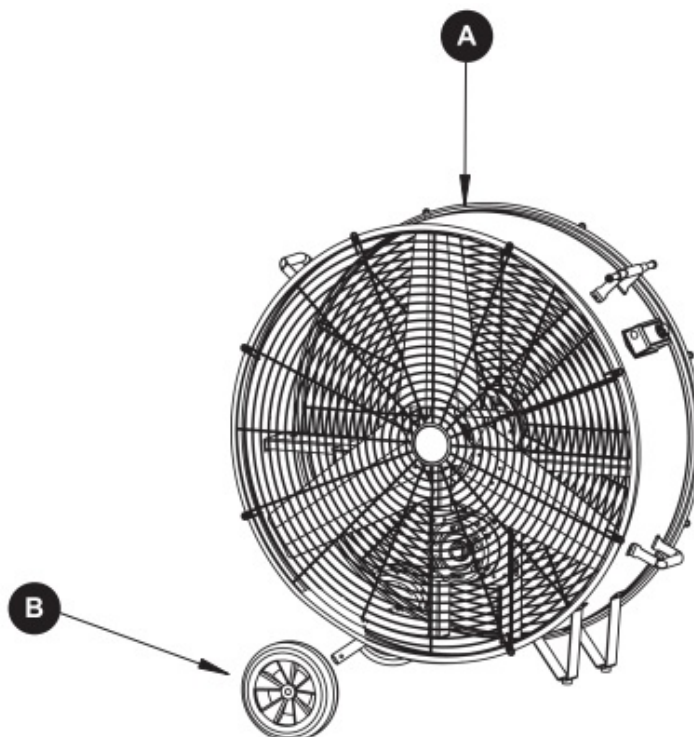
Serial Number:

Purchase Date:

Questions, problems, missing parts?

Before returning to your retailer, call our customer service department at 1-866-994-4148, 8 a.m. – 8 p.m., EST, Monday -Sunday.

PACKAGE CONTENTS



PART	DESCRIPTION	QUANTITY
A	Fan body	1
B	Wheel	2

HARDWARE CONTENTS

(shown actual size)



M6 x 10
Screw

Qty. 2

SAFETY INFORMATION

READ AND SAVE THESE INSTRUCTIONS Please read and understand this entire manual before attempting to assemble, operate or install the product.

WARNING

1. Please unplug the fan before moving it or performing maintenance. Don't touch the fan when your hands are wet.
2. Those who are not qualified electricians should not disassemble, repair or rebuild the fan.
3. Please unplug the fan when it is not in use.
4. Please don't unplug the fan by holding the cable cord. Unplug by holding the plug.
5. Please don't use the fan when there is damage to the cable cord or plug.
6. Please don't use the fan with extension cord.
7. Please don't use the fan close to fires. 8. Please don't insert your hand or other objects into the guard or the movable parts.
8. To reduce the risk of fire or electric shock, do not use this fan with any solid-state speed control device.
9. If the supply cord is damaged, it has to be replaced by the manufacturer, its service agent or similarly qualified persons in order to avoid hazard.

CAUTION

1. Please unplug the fan from the socket and clean it with a soft cloth.
2. Do not immerse the fan.
3. Please fit the guard onto fan before starting up the fan.
4. This fan is not intended for use by people (including children) with reduced physical, sensory or mental

capabilities or lack of experience and knowledge unless they have been given supervision or instruction concerning use of the fan by a person responsible for their safety. Supervise children to ensure they do not play with the fan.

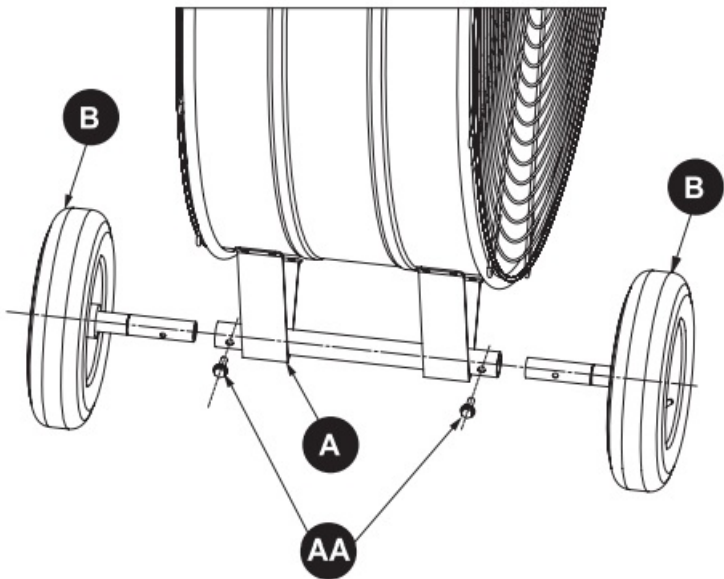
PREPARATION

Before beginning assembly of product, make sure all parts are present. Compare parts with package contents list and hardware contents list. If any pat is missing or damaged, do not attempt to assemble the product.

Estimated Assembly Time: 3 minutes
Tools Required for Assembly (not included): Phillips Screwdriver

ASSEMBLY INSTRUCTIONS

- 1. Attach the Wheels (B) to the Fan Body (A) and secure with screws (AA).



OPERATING INSTRUCTIONS

- 1. Adjust the desired speed by rotating the switch knob

- 0 Stop
- 1 Low
- 2 High



CARE AND MAINTENANCE

Unplug the appliance before cleaning. Don't use any water for cleaning metal surfaces. In order to remove the dust from the protective screen, use a vacuum cleaner or remove the front protective screen by removing the

securing screw on the ed with a screwdriver. After cleaning, remount the safety screen. After doing this, fasten the securing screw on the edge of the protective screen.

TROUBLESHOOTING

<p>The fan fails to operate.</p>	<div> <div>1.</div> <div>n.</div> </div> <div>2. There may some be obstructions in the fan.</div>	<div> <div>1.</div> <div>in</div> </div> <div>and electrical outlet is working properly.</div> <div>2. Check for any obstruction. If you find an obstruction, turn the fan"OFF". Unplug the f an and carefully remove the obstruction. Plug the fan in and turn it on again, referring to the OPERATING INSTRUCTIONS.</div>
----------------------------------	---	---

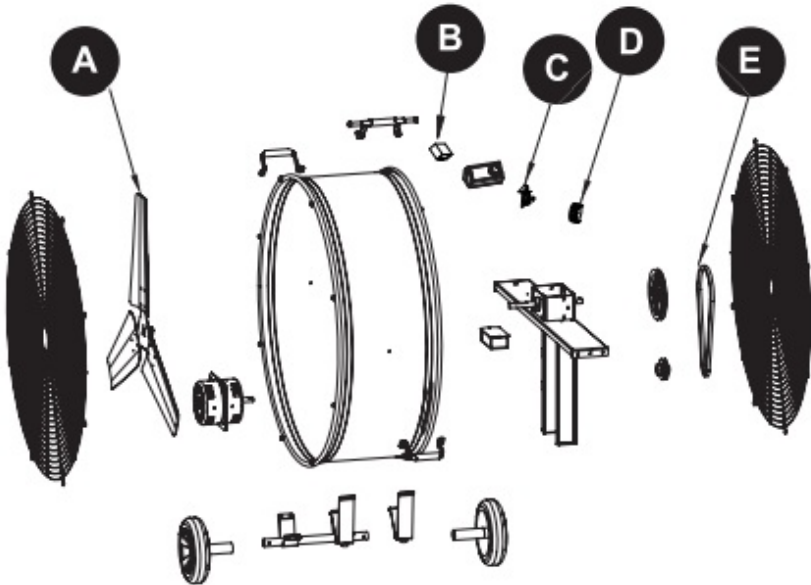
WARRANTY

TWO-YEAR LIMITED WARRANTY.

The manufacturer warrants this product to be free from manufacturing defects in material and workmanship. This warranty does not cover transit damages. This warranty does not apply to damagesfrom accident, misuse, alteration of any kind to the fan or where the connected voltage is more than the nameplate voltage. This warranty does not apply to the finish on any potion of the product. Servicing performed by unauthorized persons shall render the warranty invalid. For warranty service, contact Customer Service at 1-866-9944148, 8 a.m. – 8 p.m., EST, Monday – Sunday. Some states do not allow the limitation or exclusion of certain damages. Therefore, these limitations and exclusions may not apply to you. This warranty gives the consumer specific legal rights. You may have other rights that vary from state to state.


REPLACEMENT PARTS LIST

For replacement parts, call our customer service department at 1-866-994-4148, 8 a.m. – 8 p.m., EST, Monday-Sunday



PART	DESCRIPTION	PART #
A	Blade	SFDC-1050FB-01
B	Capacitor	SFDC-1050FB-02
C	Switch	SFDC-1050FB-03
D	Switch Knob	SFDC-1050FB-04
E	Belt	SFDC-1050FB-05

Documents / Resources



UTILITECH
42-IN HIGH-VELOCITY
BELT-DRIVE DRUM FAN
SFDC-1050FB

42-IN HIGH-VELOCITY BELT-DRIVE DRUM FAN

Model Number: SFDC-1050FB
Capacity: 10,000 CFM
Voltage: 115V
Horsepower: 1/2 HP
Speed: 3450 RPM
Weight: 15 lbs

[UTILITECH SFDC-1050FB 42-IN High-Velocity Belt-Drive Drum Fan](#) [pdf] Instruction Manual
SFDC-1050FB 42-IN High-Velocity Belt-Drive Drum Fan, SFDC-1050FB, 42-IN High-Velocity Belt-Drive Drum Fan, Velocity Belt-Drive Drum Fan, Belt-Drive Drum Fan, Drive Drum Fan