



## USmart Smart Lock Application Instructions

[Home](#) » [USmart](#) » **USmart Smart Lock Application Instructions** 

### Contents

- [1 USmart Smart Lock Application](#)
- [2 Product Information](#)
- [3 Product Usage Instructions](#)
- [4 DOWNLOAD APP](#)
- [5 BASIC SETTING](#)
- [6 ADD A LOCK ON APP](#)
- [7 USMART GO FUNCTION](#)
- [8 ACCESS VDOOR LOCK FUNCTION MANAGEMENT](#)
- [9 ADD USER, DELETE USER](#)
- [10 LOCK SETTINGS](#)
- [11 ADD AN ADMINISTRATOR](#)
- [12 ACCESS DOOR LOCK FUNCTION MANAGEMENT](#)
- [13 MAINTENANCE MENU](#)
- [14 RESTORE FACTORY SETTINGS](#)
- [15 Documents / Resources](#)
- [16 Related Posts](#)

**uSMART**

**USmart Smart Lock Application**



## Product Information

The product is called Usmart Go and it is a smart lock. It comes with a mobile app called Usmart Go APP that allows users to manage the functions of the smart lock. The product supports various features such as fingerprint, password, and IC card access. It also has the ability to add and delete users, set security passwords for remote unlocking, create families, and customize lock settings.

## Product Usage Instructions

### Access Door Lock Function Management (No Networking Mode)

#### In the normal state:

- Press the return/exit/delete key #confirmation/input/ repeat voice broadcast

#### In the initialization state:

- To wake up the screen, press \*#

#### To add an administrator:

- Select the desired authentication method (fingerprint, password, or IC card)
- After adding the administrator, access the door lock function management
- Press \* to return to the next level or continue adding administrators

## Add User, Delete User

#### In the initialization state:

- To wake up the screen, press \*#

After adding an administrator, validate the administrator by pressing 1

#### **To add user information:**

- Press 1
- Enter the desired user information (fingerprint, password, or card)
- After successful operation, press 1 to return or continue adding ordinary users

#### **To delete user information:**

- Press 2
- Enter the fingerprint, password, card, or number of the user you want to delete
- After successful operation, press 1 to return or continue deleting users

### **Download App and Basic Setting**

#### **To download the Usmart Go app:**

- Search for “USmart Go” on the Apple App Store or Google Play
- Download and install the app on your iOS or Android device

#### **To perform basic settings:**

- **Registration and Login:** You can register an account using your mobile phone or email. Input the required information and login to your account.
- **Setting Security Password:** Set a security password for remote unlocking by navigating to Menu > My Settings > Set security password.
- **Create a Family:** Associate your device with a family by navigating to Menu > My Families and following the instructions.

### **Lock Settings**

#### **To access lock settings:**

- After adding an administrator, validate the administrator by pressing 3

#### **To set the function:**

- Press 1
- Follow the on-screen instructions to select the desired options

#### **To adjust the volume:**

- Press 2
- Select either increasing or decreasing the volume

#### To set the tone:

- Press 3
- Select either Chinese phonetics or English pronunciation

#### To set the timer:

- Press 4
- Enter the desired time in the format 20\_year\_month\_day\_time\_minute

**Note:** Use the appropriate number keys to complete the set according to your actual use needs.

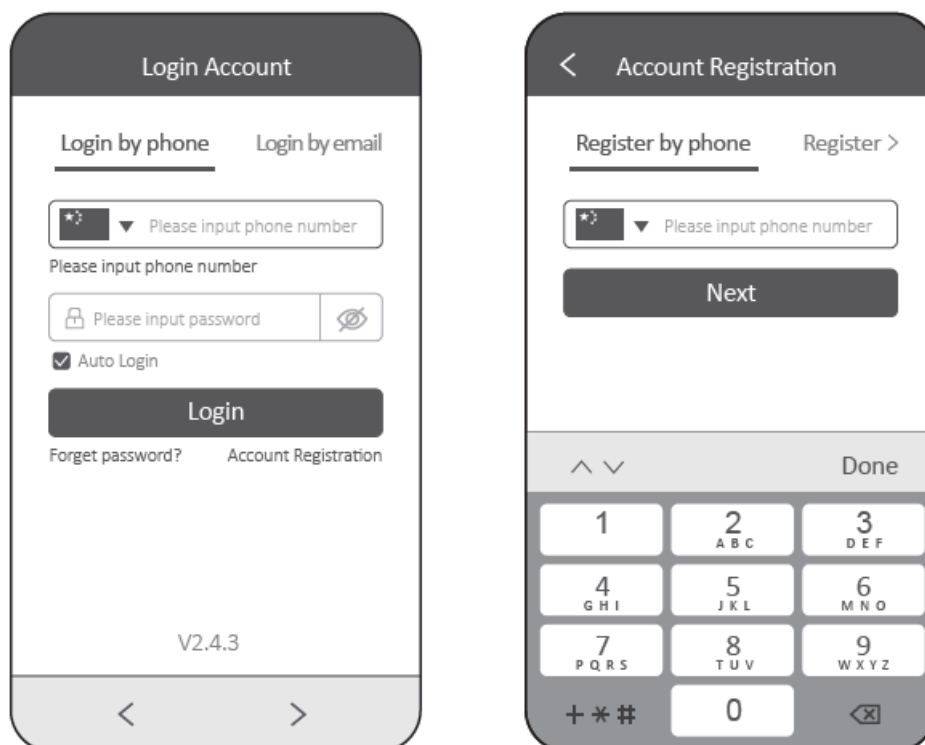
## DOWNLOAD APP

- Search “USmart Go” on the Apple App Store or Google Play for your iOS/Android device.

## BASIC SETTING

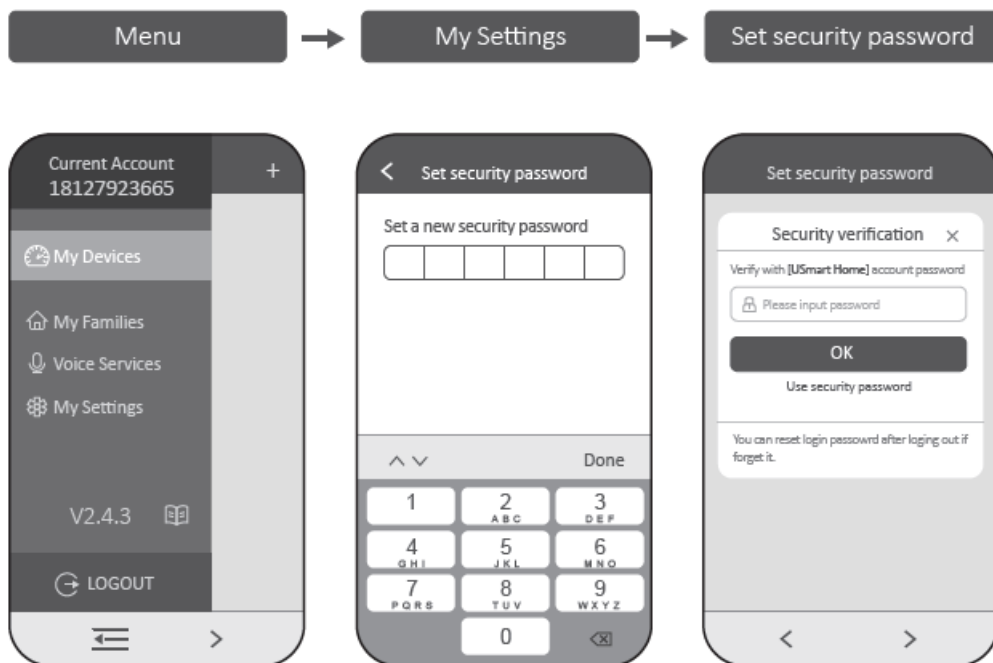
### 1. Registration and login

Usmart Go users can register the account by mobile phone or Email which currently supports 200 countries and regions in the world.



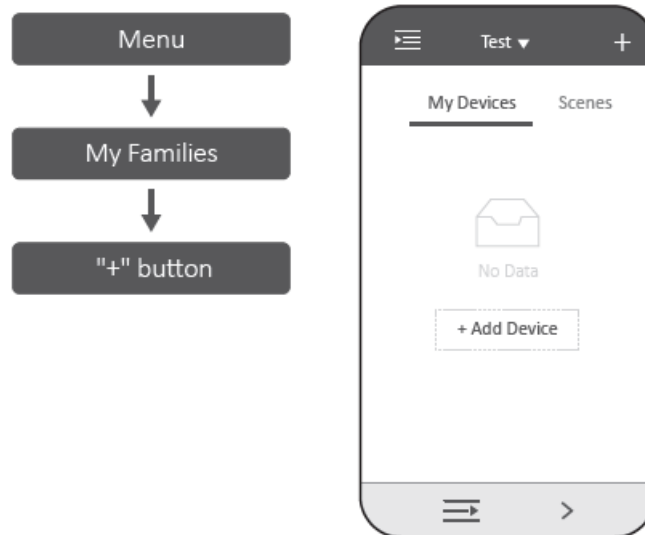
### 2. Setting Security Password

Set a security password for remote unlocking. Following the steps:



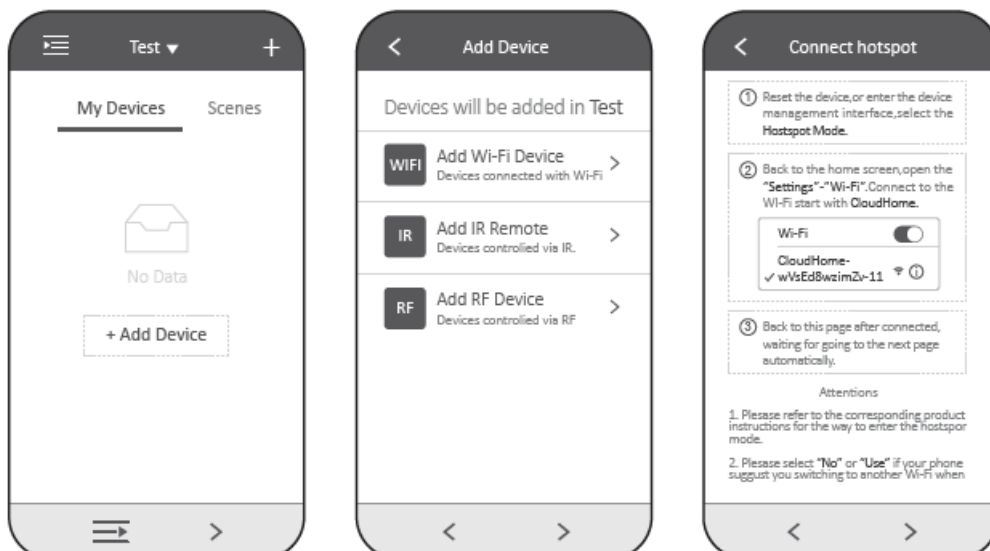
### 3. Create a Family

Every device associated with a Family follows the steps to create a family:

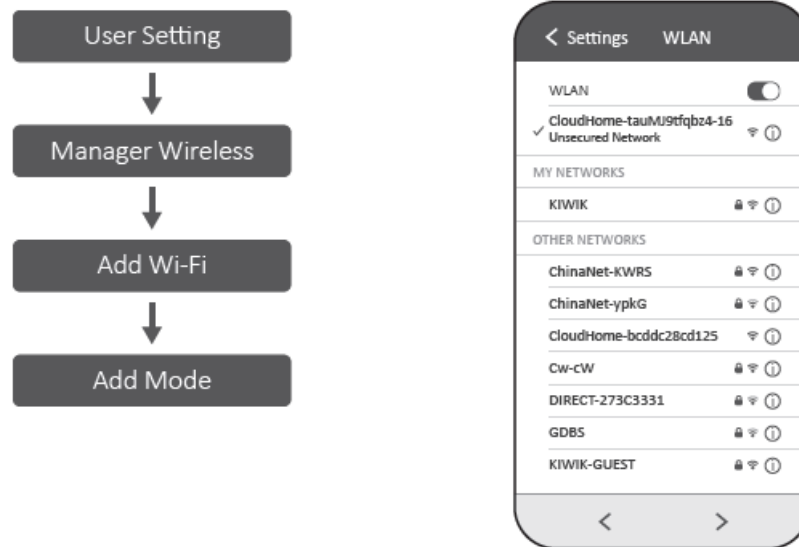


### ADD A LOCK ON APP

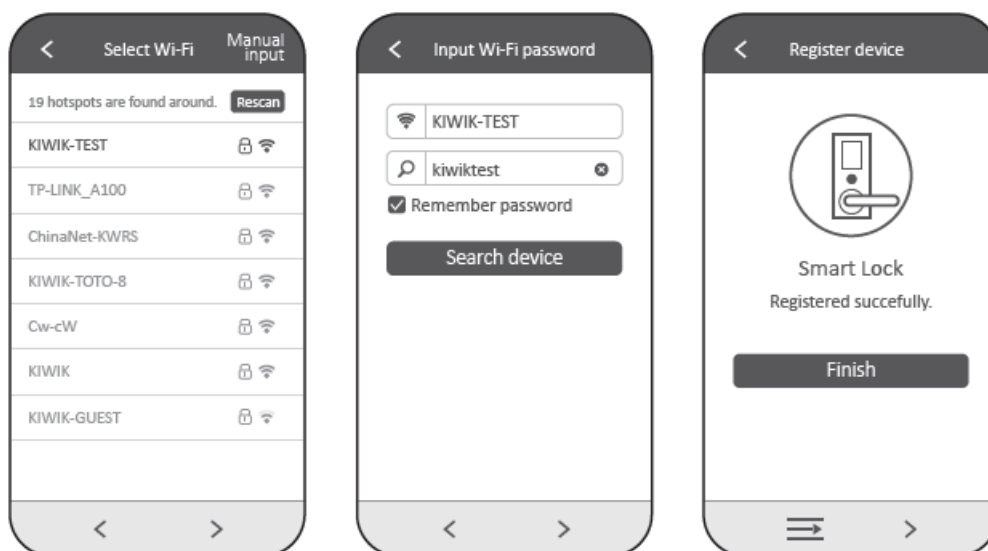
Open APP click the "+" button at the upper right corner, and choose the "Add Wi-Fi Device" item.



Press the “\*#” button on the lock to enter the admin interface. Choose to enter the network pair mode. Go to the WLAN setting on your phone, and connect to the Wi-Fi with the name “CloudHome-XXXX-16”.



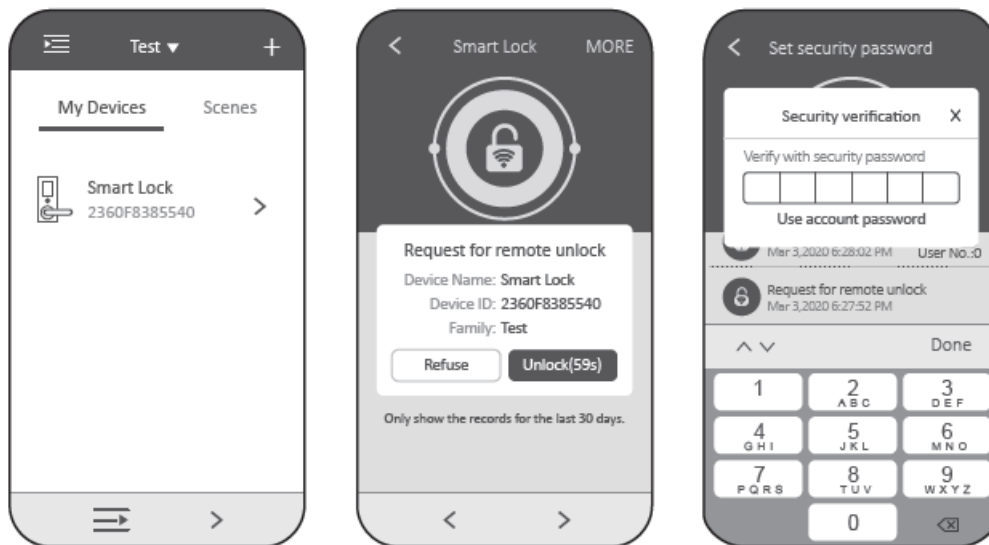
Go back to the App, choose the Wi-Fi of your home, and input the password. Click “Search device” and wait for a connection.



## USMART GO FUNCTION

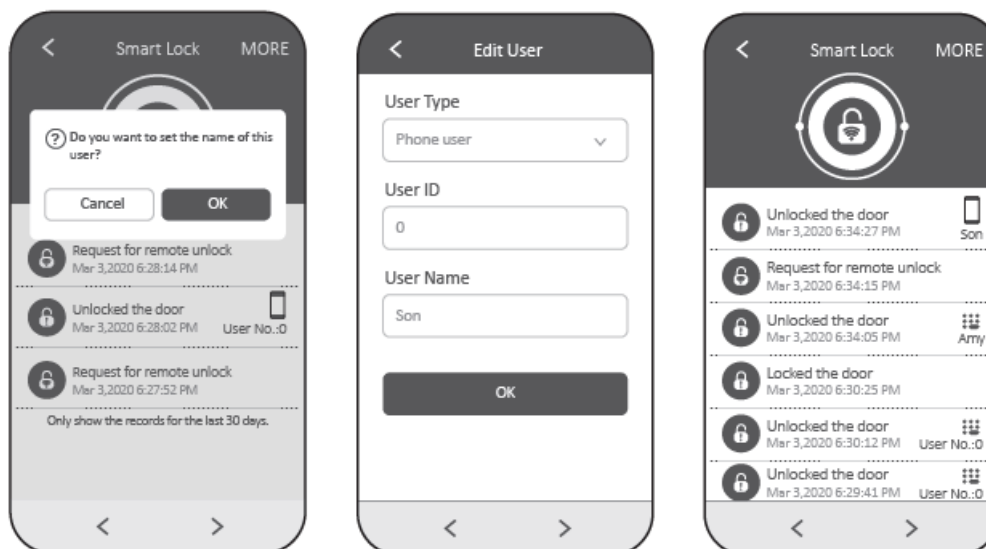
### 1. Remote Unlock

Press the “doorbell” on the lock to trigger a remote unlock request, you’ll see a pop-up window on our app, enter your security password to unlock.



## 2. Remark an User

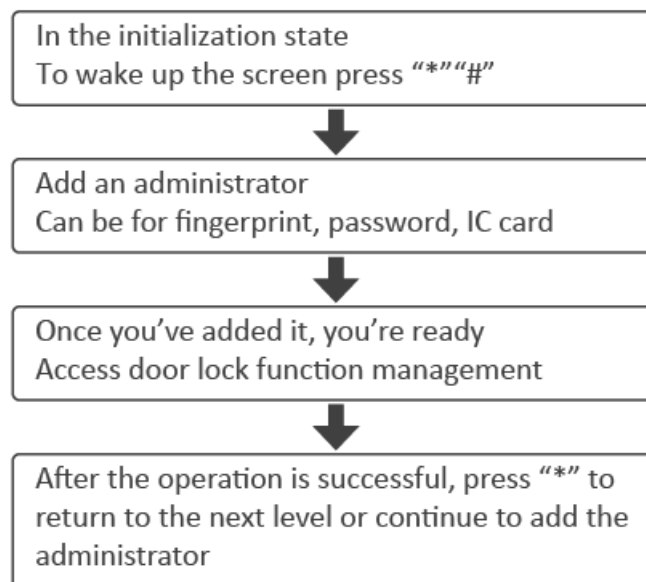
Click the event list to remark an user



## ACCESS VDOOR LOCK FUNCTION MANAGEMENT

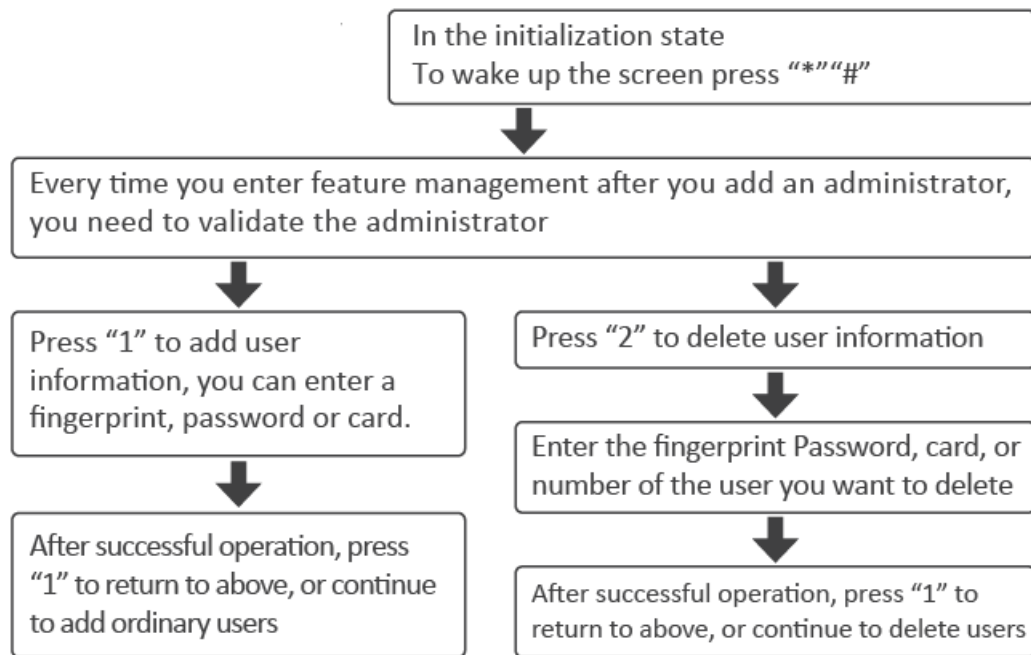
### ACCESS VDOOR LOCK FUNCTION MANAGEMENT (NO NETWORKING MODE)

In the normal state "\*" return/exit/delete key "#" confirmation/input/repeat voice broadcast



## ADD USER, DELETE USER

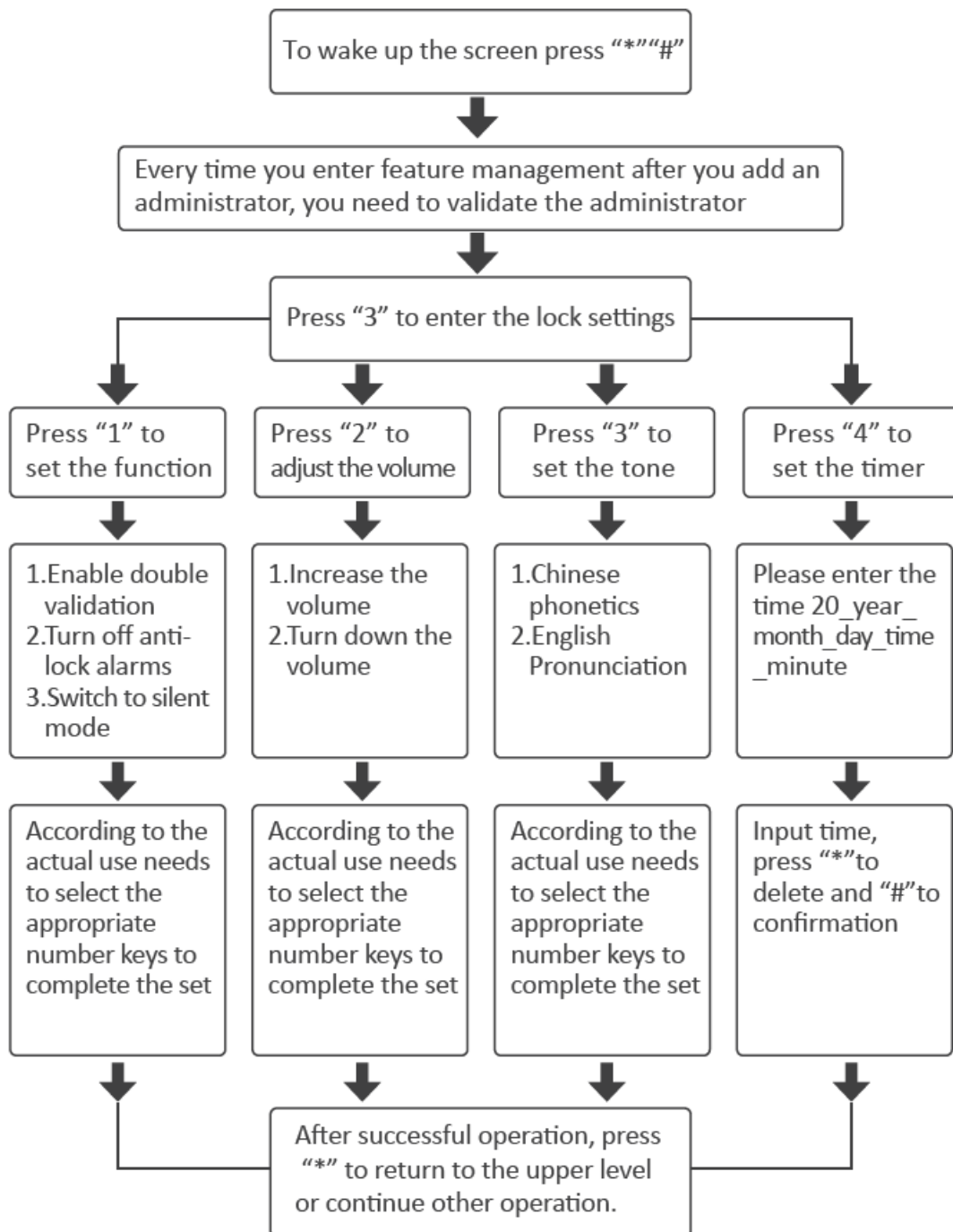
“\*” return/exit/delete key “#” confirmation/input/repeat voice broadcast.



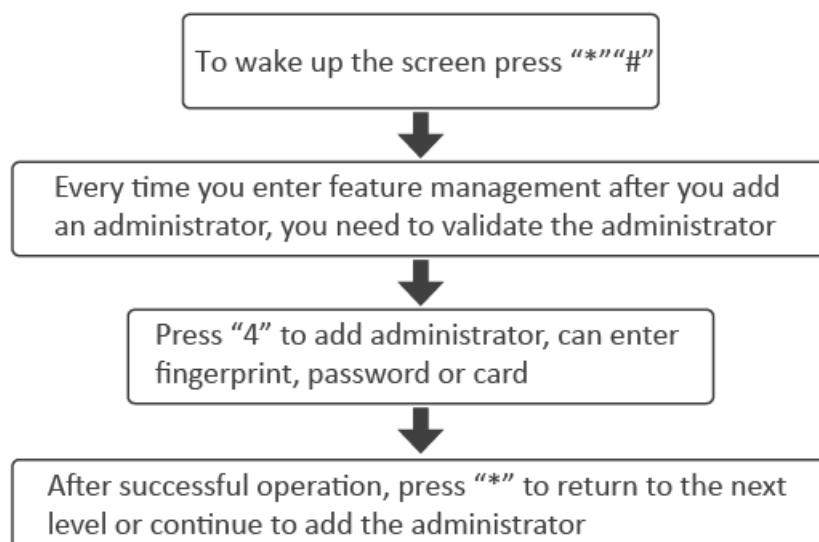
## LOCK SETTINGS

“\*” return/exit/delete key “#” confirmation/input/repeat voice broadcast





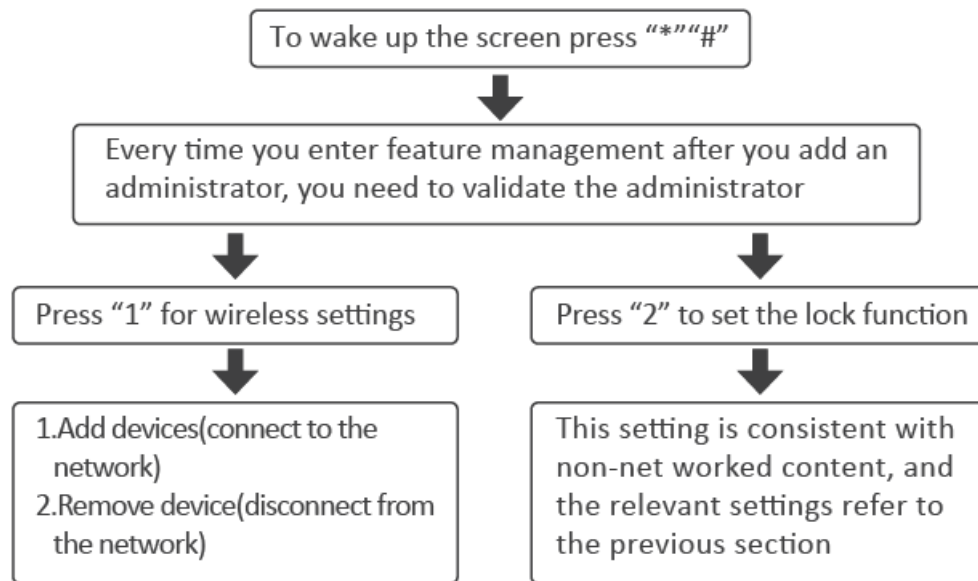
## ADD AN ADMINISTRATOR



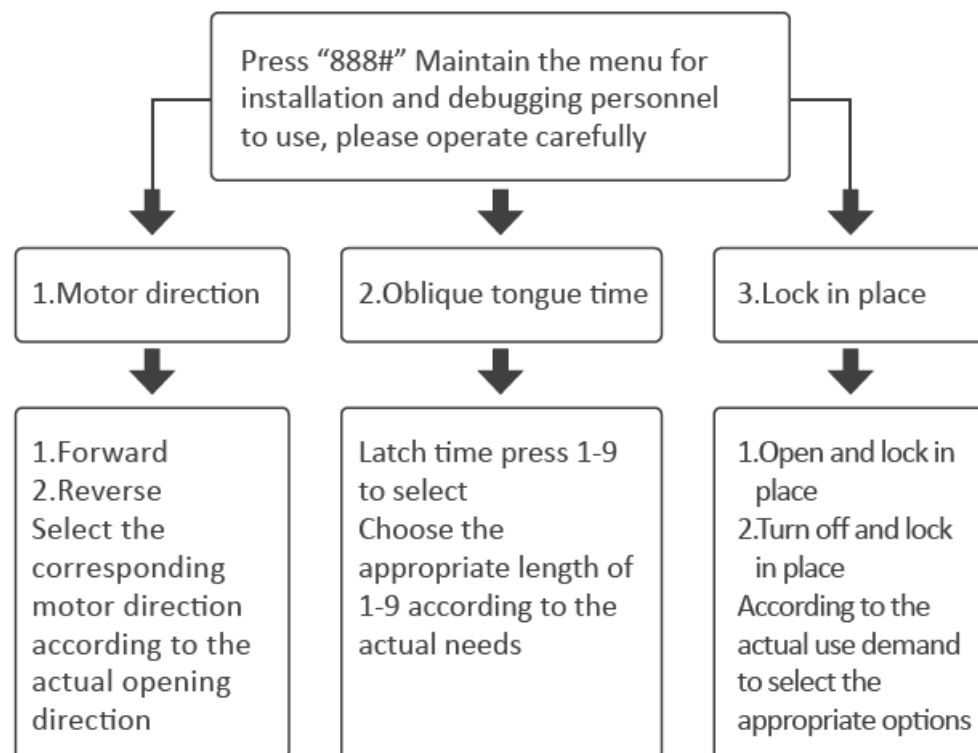
## ACCESS DOOR LOCK FUNCTION MANAGEMENT

### ACCESS DOOR LOCK FUNCTION MANAGEMENT (WITH NETWORKING MODE) OPTIONAL

“\*” return/exit/delete key “#”confirmation/input/repeat voice broadcast



## MAINTENANCE MENU



## RESTORE FACTORY SETTINGS

- The card needle long presses the keyhole key for 5 seconds, and does not loosen.

## Documents / Resources



[USmart Smart Lock Application](#) [pdf] Instructions  
Smart Lock Application, Smart Lock, Application

Manuals+.