

urmet 1730 Access Control Module Instruction Manual

[Home](#) » [urmet](#) » urmet 1730 Access Control Module Instruction Manual 

urmet 1730 Access Control Module Instruction Manual



Contents

- [1 GENERAL WARNINGS](#)
- [2 MODULE INSTALLATION](#)
- [3 KEY CONFIGURATION](#)
- [4 USE OF THE 1730/65 MODULE IN THE 1730, 1735 AND 1736 KITS](#)
- [5 CONTENTS OF THE PACKAGE](#)
- [6 TECHNICAL SPECIFICATIONS](#)
- [7 SIMPLIFIED EU DECLARATION OF CONFORMITY](#)
- [8 FCC WARNINGS](#)
- [9 Documents / Resources](#)
 - [9.1 References](#)
- [10 Related Posts](#)

GENERAL WARNINGS

Read the warnings contained in this document carefully as they provide important information regarding safe installation, use and maintenance.

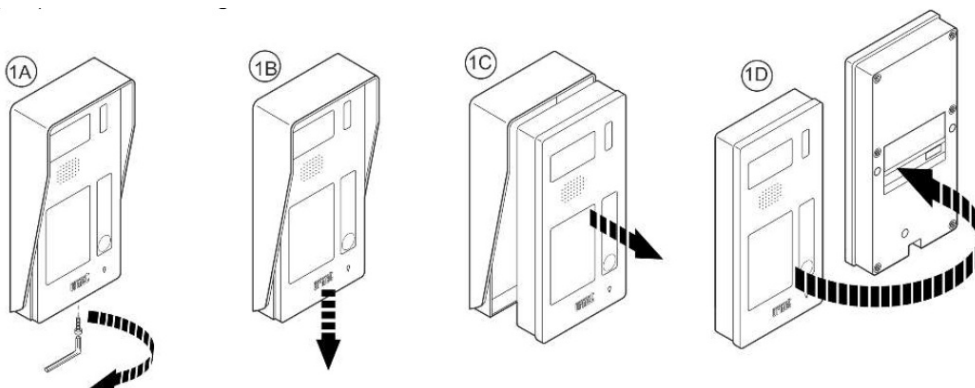
- The device must be used only for the use for which it was expressly designed.
- Any other use is to be considered improper. The manufacturer cannot be held responsible for any damage resulting from improper and unreasonable use.
- The execution of the system must comply with current regulations. All the devices making up the system must be intended exclusively for the use for which they were designed.
- Provide a suitable isolation and protection switch upstream of the devices with a contact opening distance of at least 3mm.
- Before connecting the equipment, make sure that the plate data corresponds to that of the distribution network.
- After removing them from the packaging, check the integrity of the equipment. Packaging elements (plastic bags, expanded polystyrene, etc.) must not be left within the reach of children, as they are potential sources of danger.
- Do not block the ventilation or heat exhaust openings or slots.
- Do not install the equipment in environments exposed to rain or humidity. In these cases, use special containers.
- Before carrying out any cleaning or maintenance operation, disconnect the device from the electrical power supply by turning off the system switch.
- In the event of a fault and/or malfunction of the device, turn off the power using the main switch and do not tamper with it.
- In the event of infiltration of liquids or objects inside the device and for any repairs, we recommend contacting the technical assistance center indicated by the manufacturer.
- Do not use extension cables for the power supply cable.
- The installer must ensure that user information is present on all installed devices, including this document.
- Failure to comply with the above may compromise the safety of the appliance.
- Place the elements on vertical and smooth supports, respecting all the instructions provided in the product manual downloadable from the website www.urmet.com.

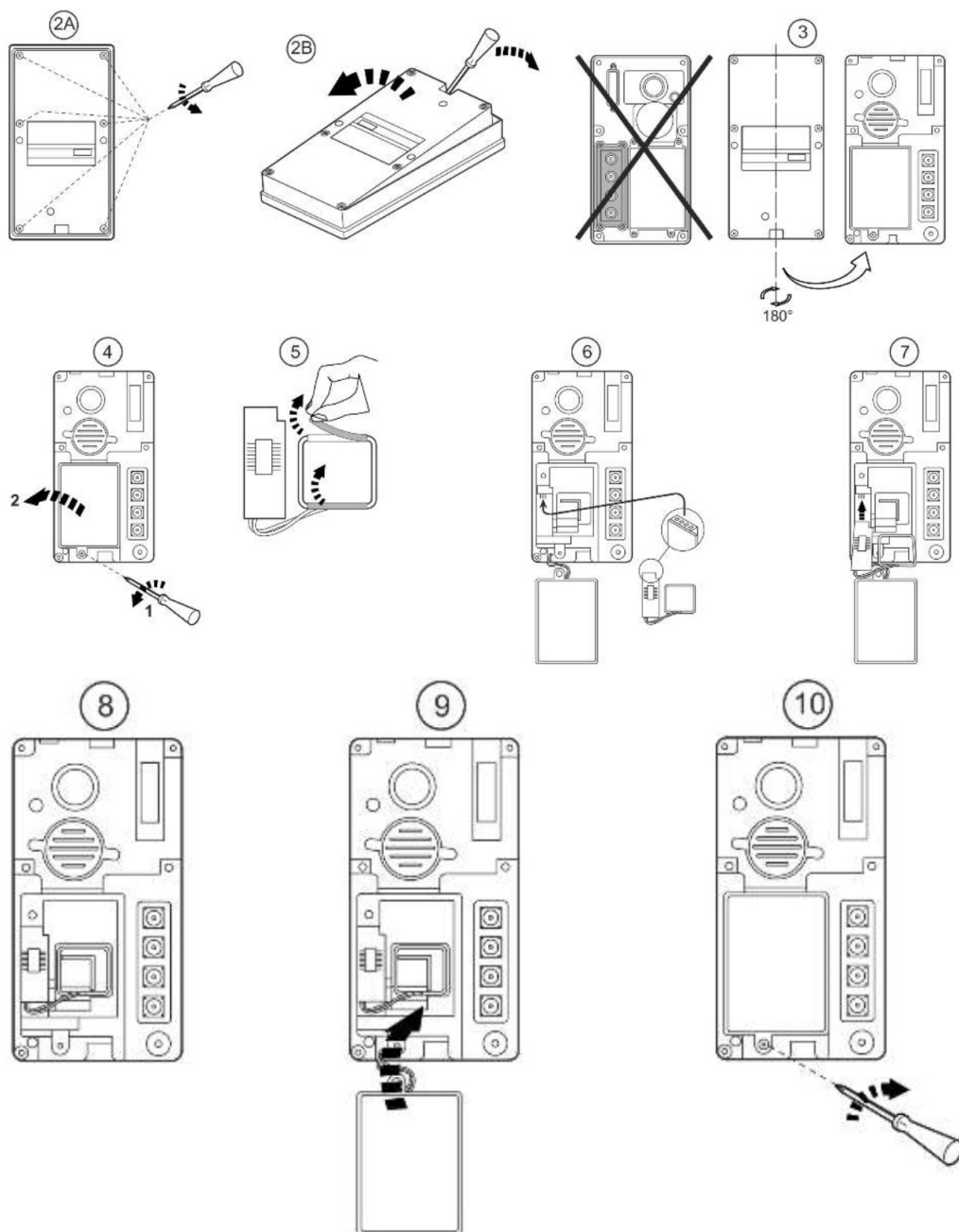
CLEANING OF PARTS

Use a soft cloth to remove dust and dirt. Do not use aggressive cleaning liquids (petrol, solvents, etc.) which could cause corrosion. Do not use spray cleaning products.

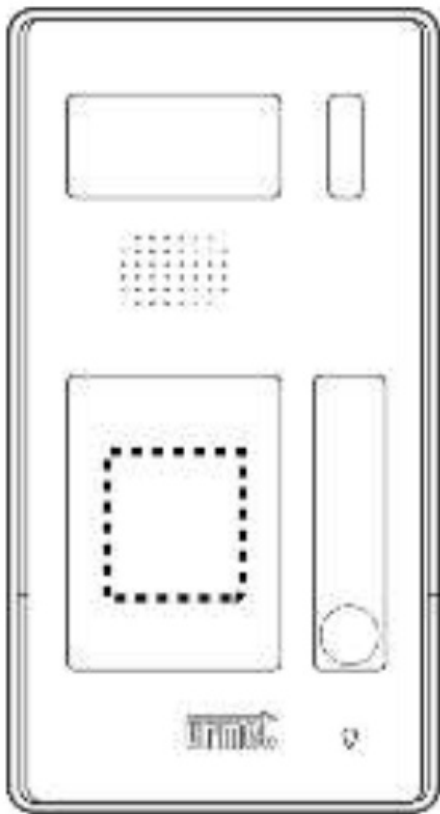
MODULE INSTALLATION

Inside the outdoor station for kit Ref. 1730, 1735 and 1736/51, there is a housing designed to accommodate the access control module (Fig. 6). Stick the double-sided tape on the module to fix it (Fig. 5) to the housing on the outdoor station.





The key reading area will be dashed after installation.
Place and slide the keys in this area.



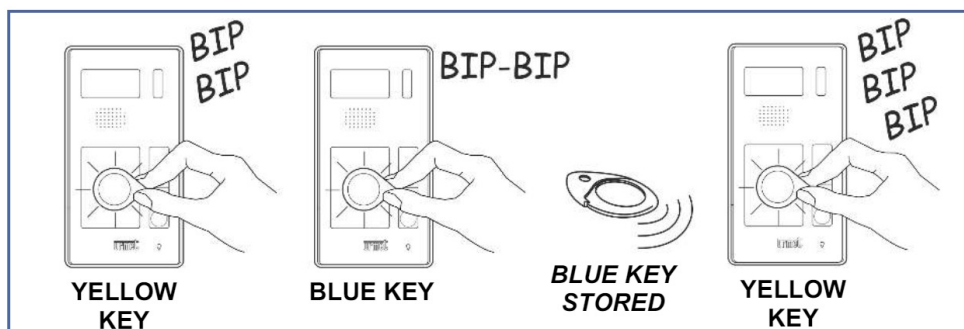
KEY CONFIGURATION

Pay particular attention to the sound feedback of the module for all illustrated procedures. Repeat the procedure from the beginning if it differs from that described.

ADDING A USER KEY

Use the **YELLOW** key to store a new **USER** key.

- Check that dip switch 3 on the outdoor station is in the OFF position.
 - Place the **YELLOW** key on the key reading area of the name tag.
 - The internal module will beep twice. Wait for the second beep before lifting the **YELLOW** key.
 - Place the **BLUE** key that you want to store on the same area.
 - The internal module will beep twice one second apart and the key will be stored.
- Note:** Three slow beeps mean that the blue key has already been programmed.
- Place the **YELLOW** key to quit the programming MODE.
 - The module will beep three times.



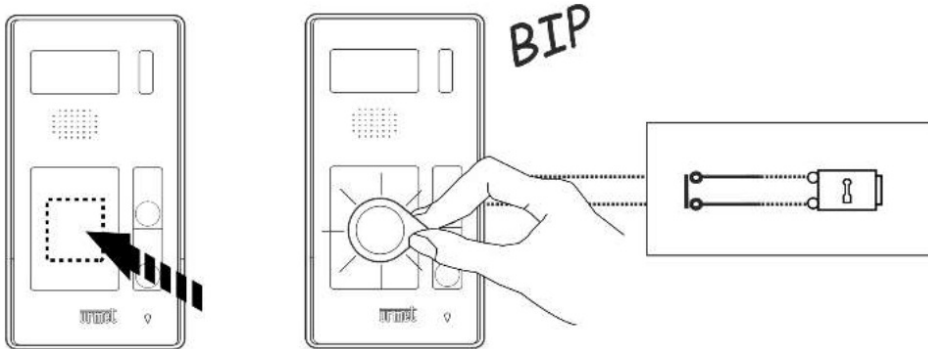
To store other keys, simply approach them one after the other in succession after the first. The module will emit two confirmation beeps each time. Place the YELLOW key again to close the storage sequence.

NOTES

To check whether a key has not yet been programmed, approach it to the key reading area. One beep followed by three more beeps will be heard.

USING THE STORED USER KEY

Place and, if necessary, swipe the key over the sensitive area of the name tag to trigger the lock connected to the outdoor station:

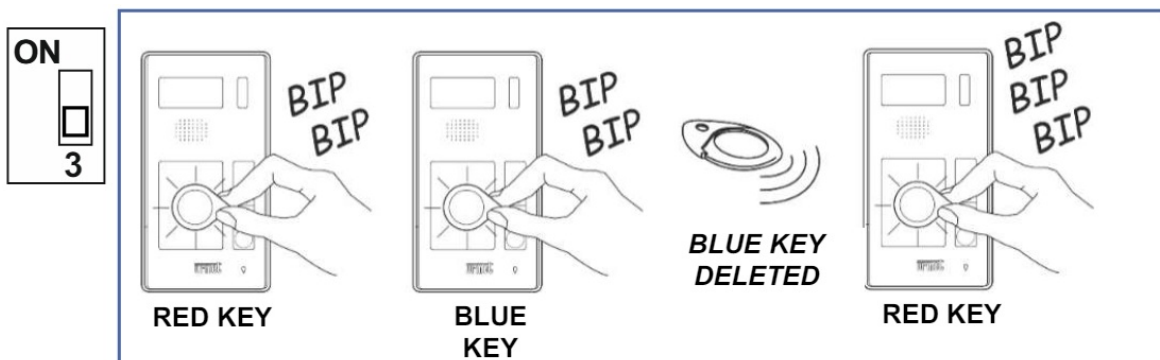


Note: The blue key will not activate the lock if a conversation is in progress between the outdoor station and an apartment device.

DELETING A USER KEY

To delete a user key, use the RED key programmed as the deletion key and follow the procedure:

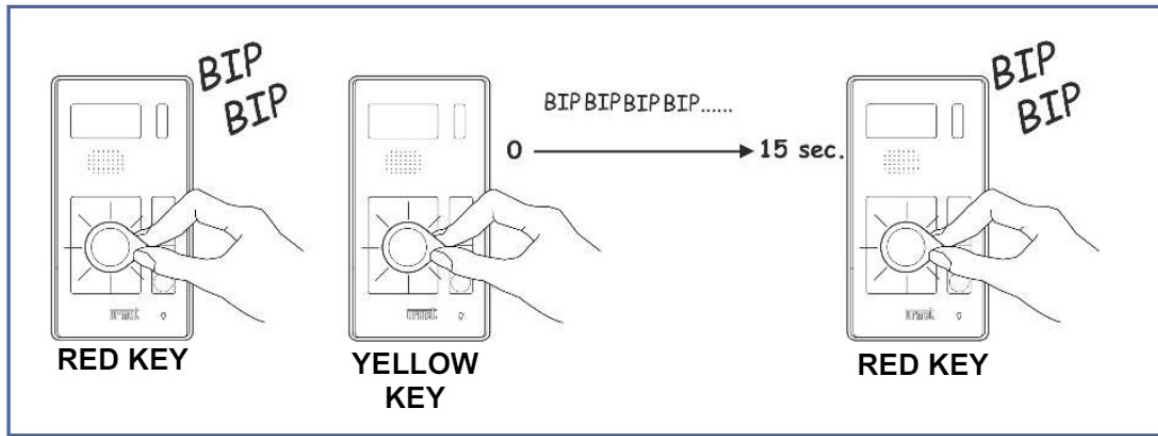
- Check that dip switch 3 on the outdoor station is in the OFF position.
- Place the RED key on the key reading area of the name tag.
- The internal module will beep twice. Wait for the second beep before lifting the key.
- Place the BLUE key that you want to delete on the same area.
- The internal module will beep twice and the key will be deleted.
- Place the RED key to quit the programming mode. The module will beep three times.



To delete other keys, approach them one after the other in succession after the first. The module will emit two confirmation beeps each time. Place the RED key again to end the deletion sequence.

To delete all the keys, place the YELLOW key after the RED key. Fast confirmation beeps will sound for about 15

seconds. Lift the **YELLOW** key at the end of the beeps.
Place the **RED** key to quit the programming mode.

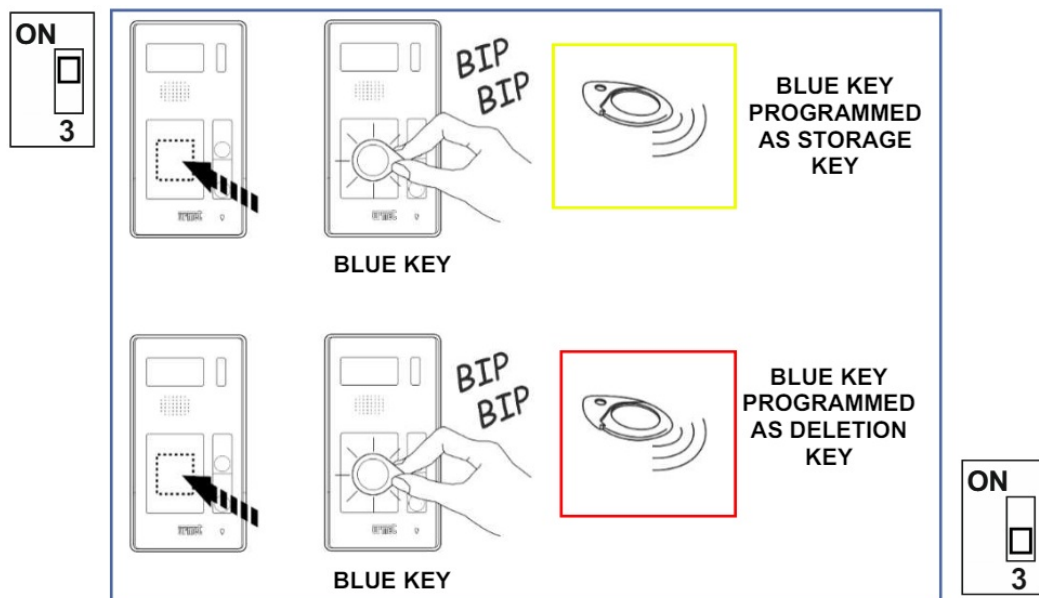


PROGRAMMING KEYS AS MASTERS

If one or both master keys are lost, any **BLUE** user key can be configured as the **MASTER** key. Follow the procedure described below using a **BLUE** key.

- Set dip switch 3 on the outdoor station in the **ON** position.
- Switch off the power supply to the outdoor station for **10 seconds**, after which time switch on the power supply again.
- Place the key you **wish to program as MASTER** on the key reading area of the name tag.
- The internal module will beep twice fast. Wait for the second beep before lifting the key.
- The key will be configured as a **STORAGE KEY**.
- Place a second key on the key reading area of the name tag.
- The internal module will beep twice fast. Wait for the second beep before lifting the key.
- The key will be configured as a **DELETION KEY**.
- Set dip switch 3 on the outdoor station in the **OFF** position.
- Switch off the power supply to the outdoor station for **10 seconds**, after which time switch on the power supply again.

If further beeps are heard, the procedure must be repeated from the beginning.



The DELETION key is always programmed after the STORAGE key. If it is necessary to reprogram or program a DELETION key for the first time, the procedure must always be carried out from the beginning.

It is recommended to mark the new acquired function (storage or deletion) on the BLUE key to distinguish it from the other user keys.




USE OF THE 1730/65 MODULE IN THE 1730, 1735 AND 1736 KITS

The images relating to the use and installation of the 1730/65 module contained in this manual are purely indicative. The 1730/65 device works in the three video intercom systems 1730, 1735 and 1736 with the same operating, use and installation methods.

The information contained in this manual is subject to change without notice. For any updates to the manual and further information on the system, scan the QR code on the side.



CONTENTS OF THE PACKAGE

	<p>ACCESS CONTROL MODULE</p> <p>To be installed inside the outdoor station in the housing provided to allow lock activation with the user keys</p>
	<p>MASTER KEYS Keys for adding and deleting user keys. The keys are supplied preprogrammed. They have been provided in different colours to facilitate identifying their use: YELLOW KEY = FOR STORING / RED KEY = FOR DELETING</p>
	<p>USER KEYS Keys for opening reprogrammable using master keys. The module is designed to recognise up to 1000 user keys.</p>

TECHNICAL SPECIFICATIONS

- Radio frequency of use: 125 KHz
- Radio power transmitted: 15,53 dBμA/m

SIMPLIFIED EU DECLARATION OF CONFORMITY

Hereby, URMET S.p.A. declares that the radio equipment type: ACCESS CONTROL MODULE FOR KIT 1730, 1735 and 1736 Ref. 1730/65 and the KEYS SUPPLIED are in compliance with Directive 2014/53/EU. The full text of the EU declaration of conformity is available at the following internet address: www.urmet.com.

FCC WARNINGS

FEDERAL COMMUNICATIONS COMMISSION INTERFERENCE STATEMENT

This equipment has been tested and found to comply with the limits for a Class B digital device, pursuant to part 15 of the FCC Rules. These limits are designed to provide reasonable protection against harmful interference in a residential installation. This equipment generates, uses and can radiate radio frequency energy and, if not installed and used in accordance with the instructions, may cause harmful interference to radio communications. However, there is no guarantee that interference will not occur in a particular installation. If this equipment does cause harmful interference to radio or television reception, which can be determined by turning the equipment off and on, the user is encouraged to try to correct the interference by one or more of the following measures:

- Reorient or relocate the receiving antenna.
- Increase the separation between the equipment and receiver.
- Connect the equipment into an outlet on a circuit different from that to which the receiver is connected.
- Consult the dealer or an experienced radio/ TV technician for help.

CAUTION:

Any changes or modifications not expressly approved by the grantee of this device could void the user's authority to operate the equipment.

This device complies with Part 15 of the FCC Rules. Operation is subject to the following two conditions: (1) this device may not cause harmful interference, and (2) this device must accept any interference received, including interference that may cause undesired operation.

RF EXPOSURE STATEMENT

This equipment complies with the FCC radiation exposure limits set forth for an uncontrolled environment. This transmitter must not be co-located or operating in conjunction with any other antenna or transmitter.




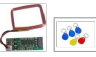

DIRECTIVE 2012/19/EU OF THE EUROPEAN PARLIAMENT AND OF THE COUNCIL of 4 July 2012 on waste electrical and electronic equipment (WEEE).



The crossed-out wheeled bin symbol on the equipment or its packaging indicates that the product at the end of its useful life must be collected separately from other waste. Therefore, any products that have reached the end of their useful life must be given to waste disposal centres specialising in separate collection of waste electrical and electronic equipment. As an alternative to autonomous disposal, the device you want to dispose of can be given back to the retailer at the time of purchasing new similar equipment. At electronic product retailers with a sales area of at least 400 m2, it is possible to return, without any obligation to buy, electronic products to dispose of with dimensions below 25 cm free of charge. The separate collection for delivery the equipment to recycling, to treatment and environmentally compatible disposal helps avoid possible negative effects on the environment and health and promotes the reuse and/or recycling of materials that make up the equipment.



Documents / Resources

 urmet 1730-0001 ACCESS CONTROL MODULE FOR KIT 1730, 1735 and 1738 Ref. 1730-00  Installation and instruction manual 	urmet 1730 Access Control Module [pdf] Instruction Manual 1730 Access Control Module, 1730, Access Control Module, Control Module, Module
---	--

References

- [!\[\]\(694fcb4611893e9db5249daba48abfc1_img.jpg\) Professional Video Door Phone and Intrusion Alarm Systems | Urmet SpA](#)
- [User Manual](#)

[Manuals+](#), [Privacy Policy](#)

This website is an independent publication and is neither affiliated with nor endorsed by any of the trademark owners. The "Bluetooth®" word mark and logos are registered trademarks owned by Bluetooth SIG, Inc. The "Wi-Fi®" word mark and logos are registered trademarks owned by the Wi-Fi Alliance. Any use of these marks on this website does not imply any affiliation with or endorsement.