



# Upstreman X90 Pro Nugget Ice Maker Countertop User Manual

[Home](#) » [Upstreman](#) » Upstreman X90 Pro Nugget Ice Maker Countertop User Manual 

## upstreman

**X90 Pro Nugget Ice Maker Countertop  
User Manual**



## Contents

### 1 IMPORTANTSAFETY INFORMATION

### 2 EXPLORING YOUR ICE MAKER

### 3 3.Water Flowing During Ice Making

#### 3.1 USING YOUR ICE MAKER

#### 3.2 CARE AND CLEANING

#### 3.3 TROUBLE SHOOTING GUIDE

#### 3.4 TECHNICAL PARAMETERS

#### 3.5 WARRANTY AND SERVICE

#### 3.6 CUSTOMER SUPPORT

#### 3.7 Documents / Resources

##### 3.7.1 References

## IMPORTANTSAFETY INFORMATION



READ ALL INSTRUCTIONS BEFORE USING THE APPLIANCE



DO NOT touch or hold mains plug with wet hands.



DO NOT tilt the ice maker. If tipped over, set it upright on a flat, level surface for at least 6 hours before use.



Fill the water reservoir with fresh potable water or connect with water filtration system to prolong the service life.

To reduce the risk of fire, explosion, electric shock, exposure to UV radiation, or injury when using your ice maker, follow these basic safety precautions.

- Before using, check if the power source corresponds to 120V, 60Hz.
- Do not remove any safety, warning, or product information labels from your ice maker.
- Plug the ice maker into an exclusive grounded outlet, do not use an adapter. No other appliance should be plugged into the same outlet. Be sure that the plug is fully inserted into the receptacle.
- Do not operate any appliance with a damage cord or plug or after the appliance malfunction or has been damaged in any manner. Return the appliance to the nearest authorized service facility for examination, repair, or adjustment.
- Do not store or use gasoline or other flammable material and vapors around this appliance.
- Avoid the use of on extension cord because it may overheat and cause a risk of fire.  
However, if it is necessary to use on extension cord:
  - Use only extension cords with grounding plug.
  - The marked rating of on extension cord must be equal to or greater than the rating of this appliance.
  - It should be positioned such that it does not drape over the counter or tabletop where it can be pulled on by children intentionally.
- Do not try to open the housing of the ice maker for repair, study or otherwise purpose. This action may result in frostbite, electrical shock, fire, property loss or death.
- The action of cleaning ice maker requires scale remover which contains acids. Acids can cause burns. If skin contact with concentrated cleaner may happen, flush with water. If swallowed, drink large amount of water or milk and call physician immediately. Keep scale remover out of reach of children.

- Cautionary statements concerning the handling, moving and use of the ice maker to avoid either damaging the refrigerant tubing, or increasing the risk of a leak: the appliance shall be handled with care and shall not be moved or installed violently.
- Component parts such as compressor, condenser, motor and copper pipe etc. shall be replaced with like components and that servicing shall be done by factory authorized service personnel, so as to minimize the risk of possible ignition due to incorrect parts or improper service.
- It is declares that the conformity to the applicable provisions of applicable US Federal requirements, including 21 CFR, Chapter 1, Subchapter J, Radiological Health.

**Warning:** Never pour colored drinks or porridge-like drinks into the machine.

#### **Outdoor Use Notice**

**Keep Cool:** Operation in ambient temperature beyond the limits listed in this manual (Refer to page 10) may result in severe damage which is not covered by warranty.

**Keep Upright:** Place on level surface only, skewed placement may damage the refrigeration system.

**Provide Shade:** Heat from the sun will reduce the unit's ability to make and store ice. UV radiation can potentially damage the plastic components.



### **READ AND SAVE THESE INSTRUCTIONS**

#### **Electricity**

Do not, under any circumstances, remove the ground prong from the power cord or use an adapter that prevents it from functioning. For personal safety, this unit must be properly grounded.

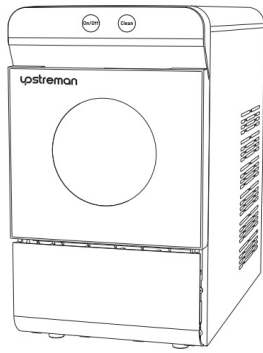
- Grounding is to minimize the possibility of electric shock hazard. The power cord of this appliance is equipped with a 3-prong plug which mates with a standard 3-prong wall outlet. Have your wall outlet and circuit checked by a qualified electrician to make sure it's properly grounded.
- The appliance should not be plugged into a 2-prong outlet, it is user's responsibility and obligation to replace it with a properly grounded 3-prong wall outlet.
- The unit should always be plugged into its rated source, 120 Volt, 60 Hz, 15 Amp circuit. This helps the machine to provide the best performance and also prevents over loading wiring circuits which could potentially cause a fire hazard from overheated wires.
- Repair or replace immediately all power cords that are frayed or otherwise damaged. Do not use a cord that has cracks or abrasion damage along its length or at either end.

## **EXPLORING YOUR ICE MAKER**

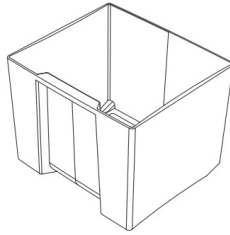
#### **Unpacking**

**IMPORTANT:** Do not remove any safety, warning, or product information labels from your ice maker.

- Package includes: 1 ice maker, 1 ice bin, 1 ice scoop and 1 user manual.
- Remove tape and any labels from your ice maker before using (except for the labels listed above).
- Do not use sharp tools, alcohol, flammable fluids or rough cleaners to remove tape or glue. These items can cause damage to the surface of your ice maker.



NUGGET ICE MAKER



ICE BIN



ICE SCOOP

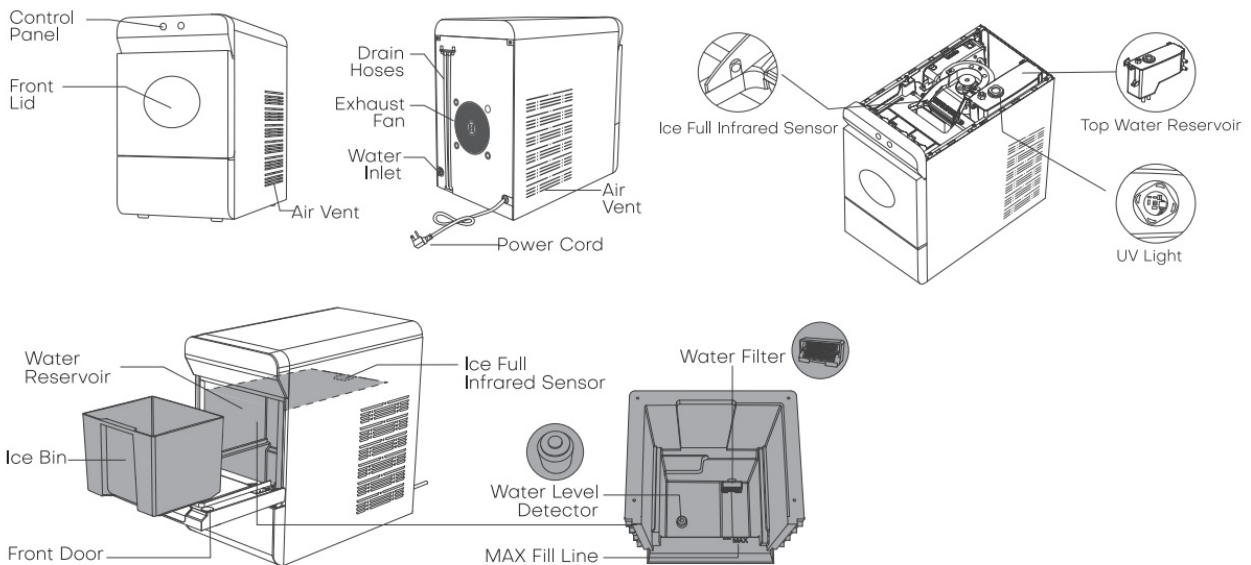


USER MANUAL

user manual

## Know Your Ice Maker

This ice maker may have been tilted or placed upside down during transportation. Please set it upright for at least 6 hours before initial use to allow the refrigerant fluid to settle.



## Control Panel & Display







On/Off Press to turn the ice maker on or off.



Self-cleaning Press and hold for 3 seconds to enter self-cleaning program.



			
Ice Making Keep flashing when the ice maker is plugged in, glow solidly during ice making.	Cleaning Glow white when the ice maker is running self-cleaning program.	Add Water Glow white when the water supply is not enough to continue making ice.	Ice Bin Full Glow white when the ice bin is full.

## FAQs

The ice maker should operate between 50°F (10°C) and 90°F (32°C). Use water with a temperature between 54°F (8°C) and 82°F (28°C) for ice making or cleaning. Exceeding the limit may result in severe damage which is not

covered by the warranty.

### 1. Water Residue Found

Every Upstream Ice Maker goes through a running test before leaving the plant, so it's normal to find water residue in water reservoir or drain hoses. Run self-cleaning program twice with fresh water before first use.

### 2. Time of Ice Making

Time of ice making is affected by the ambient and water temperature. The first ice comes out between 15 and 30 minutes. Usually, it takes 3-4 hours to fill the ice bin.

---

### 3. Water Flowing During Ice Making

Every time the ice maker starts making ice or water is refilled. Water flows through the ice chute into water reservoir, this is to cool the water. Water will stop flowing when its temperature is low enough to form ice.

### 4. Sounds Made by Ice Maker

The ice maker is designed to work quietly but will make some sounds during operation.

### 5. Heat Generation

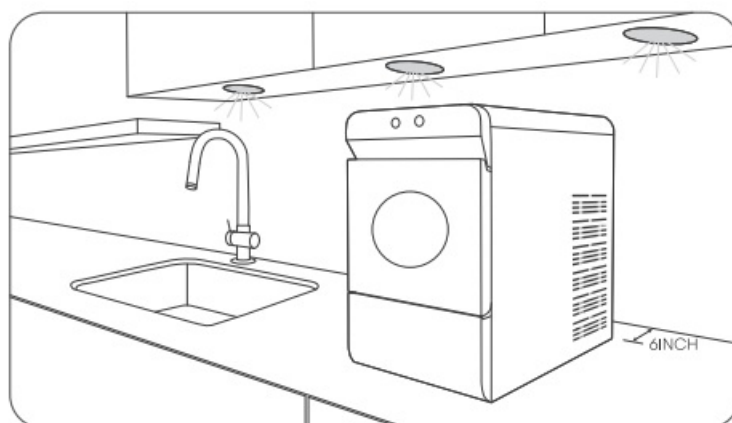
It's normal for the ice maker to generate some heat during working, especially when it has kept working for a long time.

## USING YOUR ICE MAKER

Make sure the drain plug is firmly inserted before use.

The ice maker will stop making ice when the ice bin is full and resume in 4 hours automatically. Remove the ice cubes timely, the unit will restart making ice immediately if there is plenty of water.

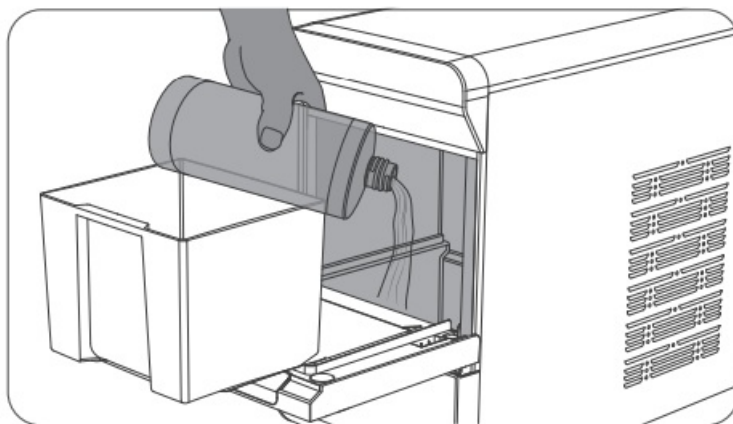
### Getting Started



#### 1. Locate and Clean

Locate upright on a flat, level surface with at least 6 inches of clearance on the side and back. Clean the

reservoir, ice bin and ice scoop, then settle for at least 3 hours before first use.

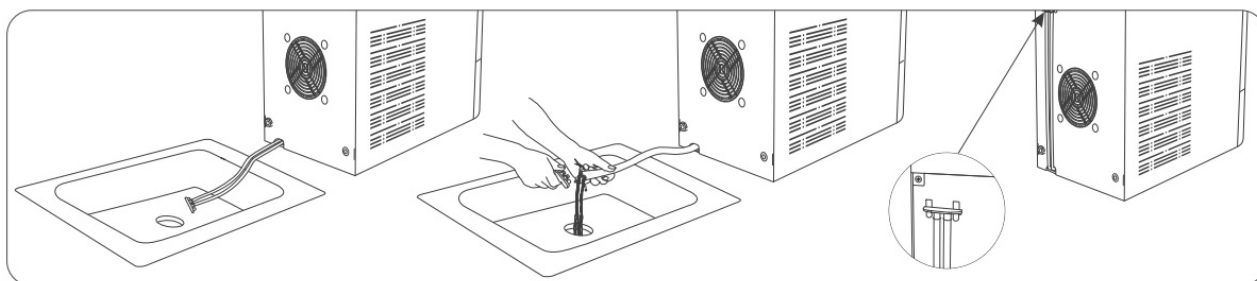


## 2. Add Water Manually

Open the front door and pull the ice bin out. Fill the water reservoir with potable water below MAX line.

Place the ice bin back and close the door.

\*Recommended water type: distilled or demineralized water at 46-82°F

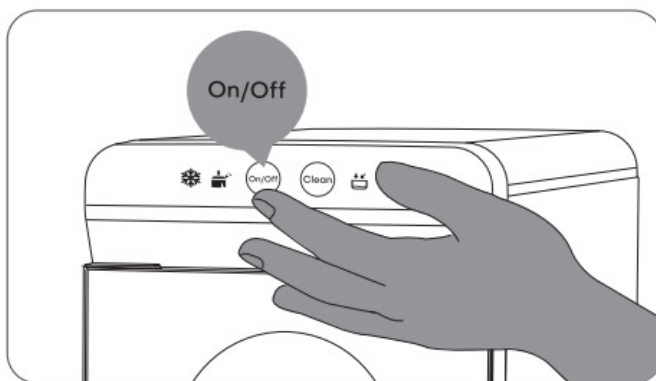


## 3. Drain Water

Take the drain hoses off and put them in a sink or a bucket. Make sure that the end of the hoses are lower than the bottom of the ice maker. Remove the drain cap.

The drain hoses will drain the water by themselves.

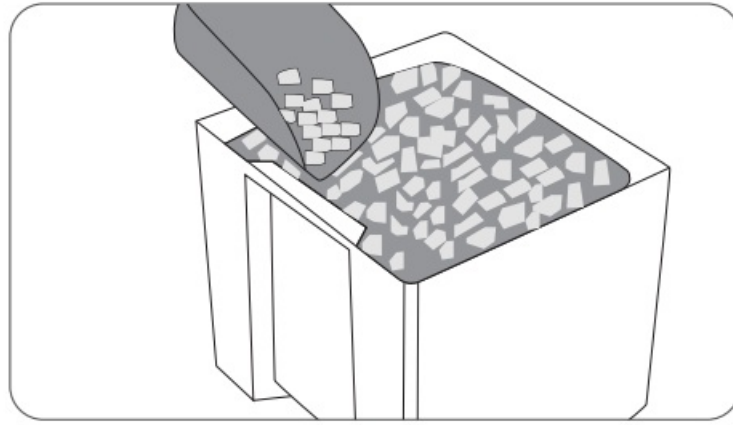
After fully drained, seal back the drain hoses and hang them up at the back of your ice maker. \*Drain the ice maker should be through the drain hoses at the back of the machine. Do not tip the ice maker over.



## 4. Start Making Ice & Turn Off the Ice Maker

Start Making Ice: Plug into a properly installed grounded outlet, then press "On/Off" button to start ice making cycle. It will keep making ice until the ice bin is full.

Turn Off the Ice Maker: Short press "On/Off" button to turn off the ice maker. The machine will continue to work for an extra 30-60s to remove the remaining ice from internal components, and it will automatically stop working when the process is completed. The ❄️ indicator keeps flashing unless the ice maker is unplugged.



#### 5. Scoop Ice Out

The ice maker will start to produce ice in about 15 minutes. Scoop the ice cubes out once made. Put in use or store in freezer to avoid melting.

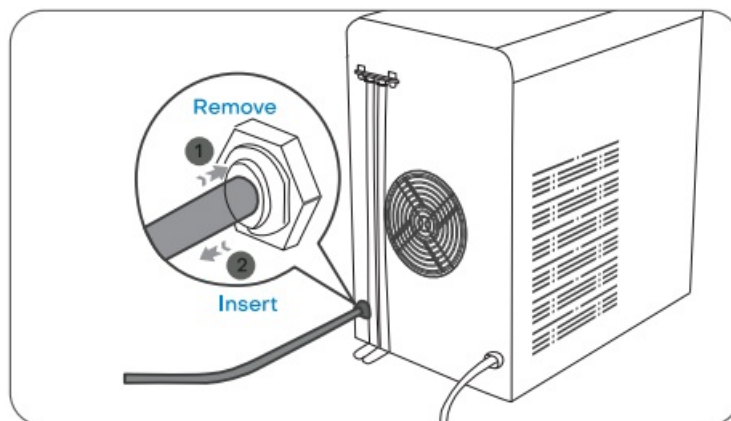
**Note:** When unplugging the ice maker, empty the ice basket to avoid overflow of water from melted ice.

#### Automatic Refilling

To add water automatically, connect the hose (not included) to the water supply system as instructed.

An adapter (not included) may be required as per the type of water supply system in your home.

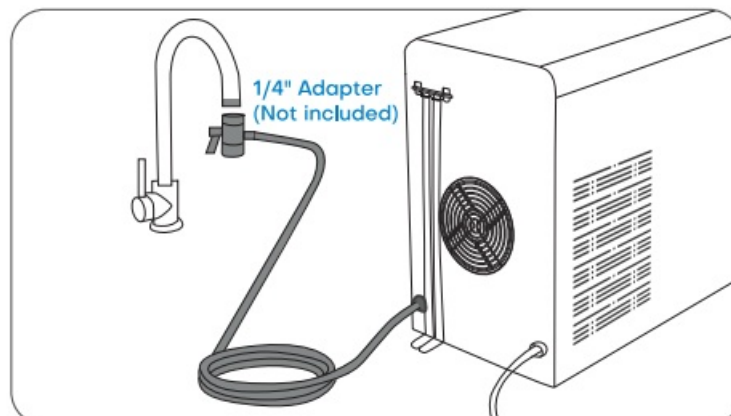
To avoid overflow of water, do not add water manually when the ice maker is already connected to the water supply system.



#### 1. Insert the Hose

Fully insert the hose (not included) into the water inlet till the end is reached.

To remove, hold against the gray ring and pull out.



#### 2. Connect with Water Supply System Connect the other end with water supply system. A

1/4" connector may be required.



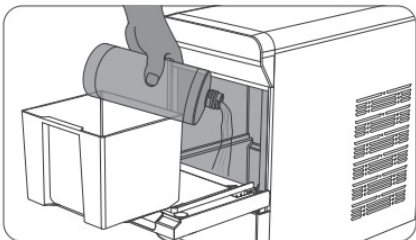
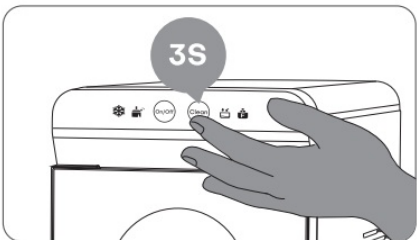
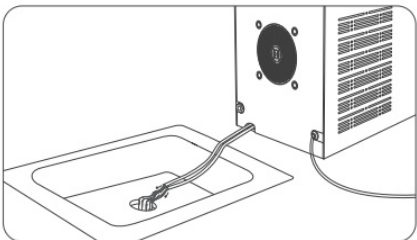


\*It is recommended to connect with water filtration system to avoid blockage by scale or mineral build-up.

## CARE AND CLEANING

### Self-Cleaning

The ice maker will carry out a self-cleaning cycle automatically after keep running for 4.5 hours (if ice bin is not full).

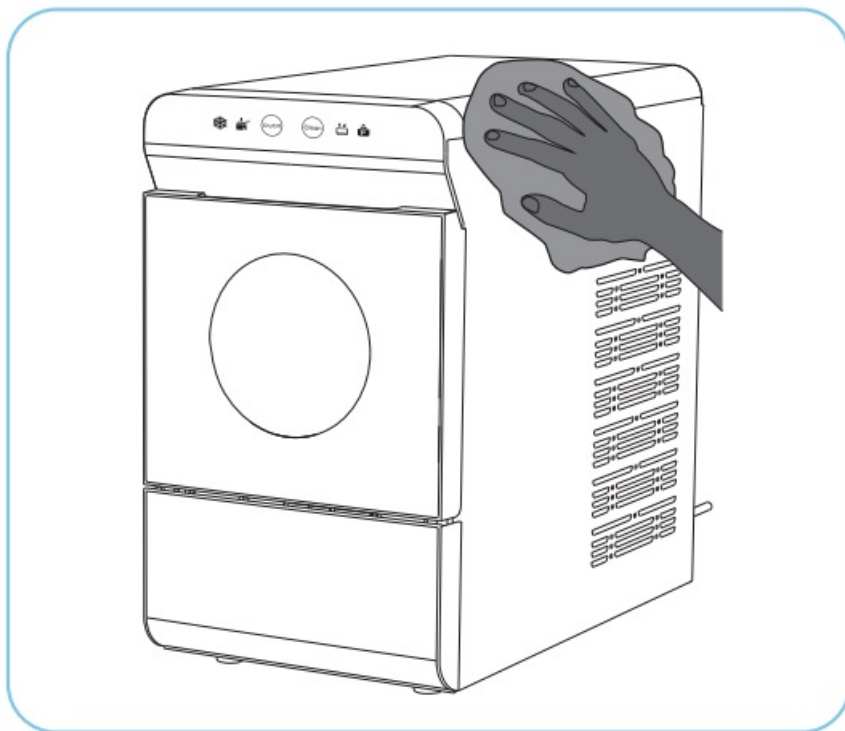
To keep your nugget ice tasting fresh, we recommend that you carry out self-cleaning before first use and at least once every 1 to 2 weeks.

		
1 Fill the reservoir with water below MAX line or connect with water supply system.	2 Hold "Clean" for 3s to start an 8-minute self-cleaning cycle (  stays solid on)	3 Once completed,  ' will turn off . Unhook the drainpipe and lay down to a sink. To resume ice making, press "On/Off" again.

### Regular Cleaning

To remove the fallen dirt or fibers, we recommend cleaning the ice bin and water reservoir once every 1 to 2 weeks.

Unplug before cleaning.



1. Unplug and take out the ice bin. Remove the water filter on the right corner of the reservoir.
2. Rinse clean the ice bin and water filter with diluted detergent and warm water.
3. Clean the water reservoir with diluted detergent, warm water and a soft cloth. Add water to rinse and drain out

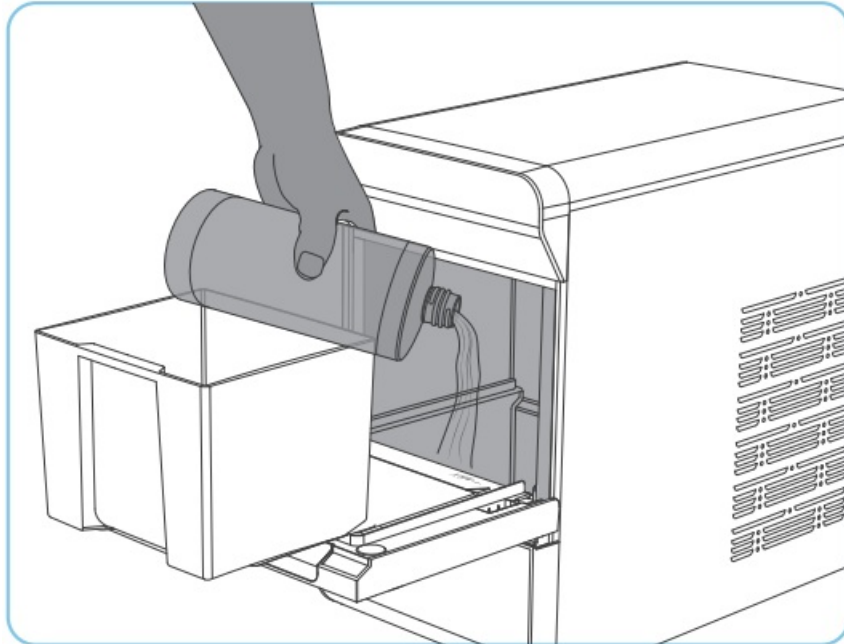


the water.

4. Gently wipe the exterior with a soft, damp cloth.

### Descaling

For scale or mineral build-up, follow the directions below to descale once a month or when needed. Do not clean with solvents or chemicals.



1. Fill the water reservoir with warm water (around 90°F) below MAX line.
2. Add in distilled white vinegar or ice maker cleaner. Set aside for at least 2 hours.
3. Hold "Clean" for 3s to start self-cleaning cycle. Repeat up to 3 cleaning cycles.
4. Drain the mixture and continue running 3 cleaning cycles with fresh water for each rinse.







### Storage

When not in use for an extended period of time, clean, drain water completely and dry the interior. Cover and store in a cool, dry location away from direct sunlight.

## TROUBLE SHOOTING GUIDE

The troubleshooting guide addresses the most common problems. If problems persist, feel free to contact the Customer Support at [support@upstreman-home.or](mailto:support@upstreman-home.or)

### Trouble Shooting

Problem	Possible Cause's	Solutions
 Add water on	• Water is not enough	• Add water to reservoir manually and press the "On/Off button to restart
	• Water filter in the water reservoir is blocked	• Clean water filter and restart
	• Water level detector in the water reservoir is blocked	• Check Water level detector and restart
	• Scale blocked in internal pipes	• Follow the steps of Descaling on page 19
 Full On	• Ice bin is full.	• Empty the ice bin
	• Ambient temperature exceeds limited working temperature	• Change the environment to meet the requirements on page 10
	Infrared sensor blocked	• Check if any ice has blocked or got stuck in the infrared sensor and clean it
	• NTC malfunction	• Contact Upstream Customer Service for help
 Making' On  Cleaning' Flash	Defrosting mode	1.No action is needed. The ice maker is in defrosting process and it will end in approx. 30 minutes 2Alternatively, you can hold and press the "clean" button for 3 seconds, and then press the "On/Off button again to restart the appliance
 Making" Flash  Cleaning' Flash	Ice making components are frozen.	1.Unplug the ice maker for 45–60 minutes for ice to melt. Then run cleaning program 2-3 times with fresh water. 2.Contact Upstream Customer Service for help if it happens frequently.

## Trouble Shooting

Problem	Possible Causes	Solutions
No Ice	• Poor heat dissipation.	• Keep a 15cm/6inch clearance on all sides of the ice maker for proper ventilation.
	• The water temperature is too high.	• Use water with a temperature between 46°F(8.9°C) and 82°F(28°C).
	• The ambient temperature is too high.	• Operate in an environment between 50°F (10°C) and 90°F (32°C).
	• The ice-making system is Malfunctioning.	• Contact Upstream Customer Service for help.
Noise	• Ice-making components are frozen.	• Turn off the machine for 45 to 60 minutes for ice to melt. Then follow the steps of “Descaling” on page 19.
	• Resonance	• Remove any other object that is in contact with the ice maker
	• Exhaust fan makes a loud noise.	• Making a sound during working is normal. If the sound is too loud, contact Upstream Customer Service for help.
	• Compressor malfunction	• Contact Upstream customer service for help
Water Leak		• Contact Upstream customer service for help.

## TECHNICAL PARAMETERS

### TECHNICAL PARAMETERS

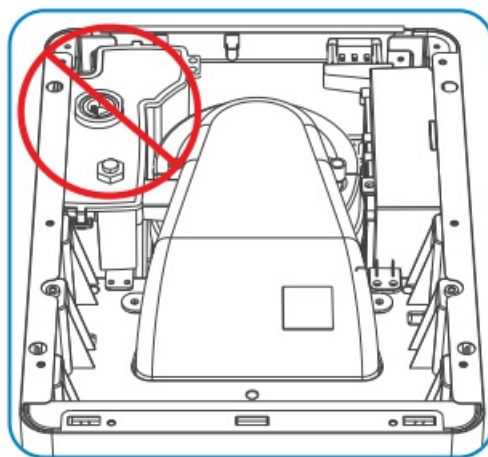
Description of product	Portable nugget ice maker
Model	X90 Pro
Applicable Climate	ST/SN/N/T
Class	/
Power Source	120V-, 60Hz, 3.0A
Rated Power	170W
Refrigerant/ Refrigerant Amount	R600a / 24g
Foaming Agent	C5H10
Net Weight	37.4 Lbs
Housing	SUS430
Unit Size (DxWxH)	17.2 9.6x 16.7 inch

**Note:** Products containing refrigerants This product contains a refrigerant, which under Federal Law must be removed prior to product disposal. If you are disposing this, or any refrigeration product, check with your local waste company for guidance.



**Warning** The UV lamp can not be replaced by the users and it can only be replaced by the authorized maintenance personnel.

The appliance must be powered off before the maintenance is performed to prevent the service personnel from being subject to electric shock and exposing to the UV radiation.



## WARRANTY AND SERVICE

The troubleshooting guide addresses the most common problems. If problems persist, feel free to contact the Customer Support at: [support@upstreman-home.com](mailto:support@upstreman-home.com)

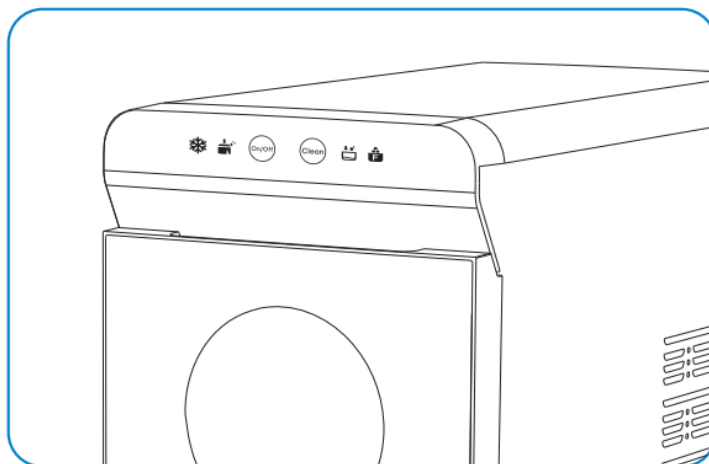
**The warranty will not apply in cases of:**

- Accident, misuse, or repairs performed by unauthorized personnel.
- Any unit that has been tampered with or used for commercial purpose.
- Normal wear and tear of wearable parts.
- Use of force, damage caused by external influences.
- Damage caused by non-observance of the User Manual, e.g., connection to an unsuitable mains supply or non-compliance with the instructions.
- Partially or completely dismantled appliances.
- Defects caused by or resulting from damages from shipping or from repairs, service, or alteration to the product or any of its parts that have been performed by a repair person not authorized.

We can only provide after sales service for products that are sold by Upstream or Upstream authorized retailers and distributors.

If you have purchased your unit from a different place, please contact your seller for return and warranty issues.

\*Please have your order ID ready before contacting Customer Support.



## CUSTOMER SUPPORT

## CUSTOMER SUPPORT

Thank you for choosing Upstreman Ice Maker.

This product is covered with Upstreman product and labor warranty for 12 months from the date of its original purchase.

### Upstreman Official Email

To describe your issue in detail, write to us at [support@upstreman-home.com](mailto:support@upstreman-home.com).

### Questions or Concerns?

[support@upstreman-home.com](mailto:support@upstreman-home.com)

Shenzhen Lanbiaoyi Technology Co., Ltd.

RM.1438F, Angier Bldg., NO.52 Baguio 4th ST.,


Yeanling Ave., Fustian Dist., Shenzhen Guangdong China 518000

Made in China



---

## Documents / Resources

	<p><a href="#">Upstreman X90 Pro Nugget Ice Maker Countertop</a> [pdf] User Manual X90 Pro Nugget Ice Maker Countertop, X90 Pro, Nugget Ice Maker Countertop, Ice Maker Countertop, Maker Countertop, Countertop</p>
---	--

## References

- [User Manual](#)