



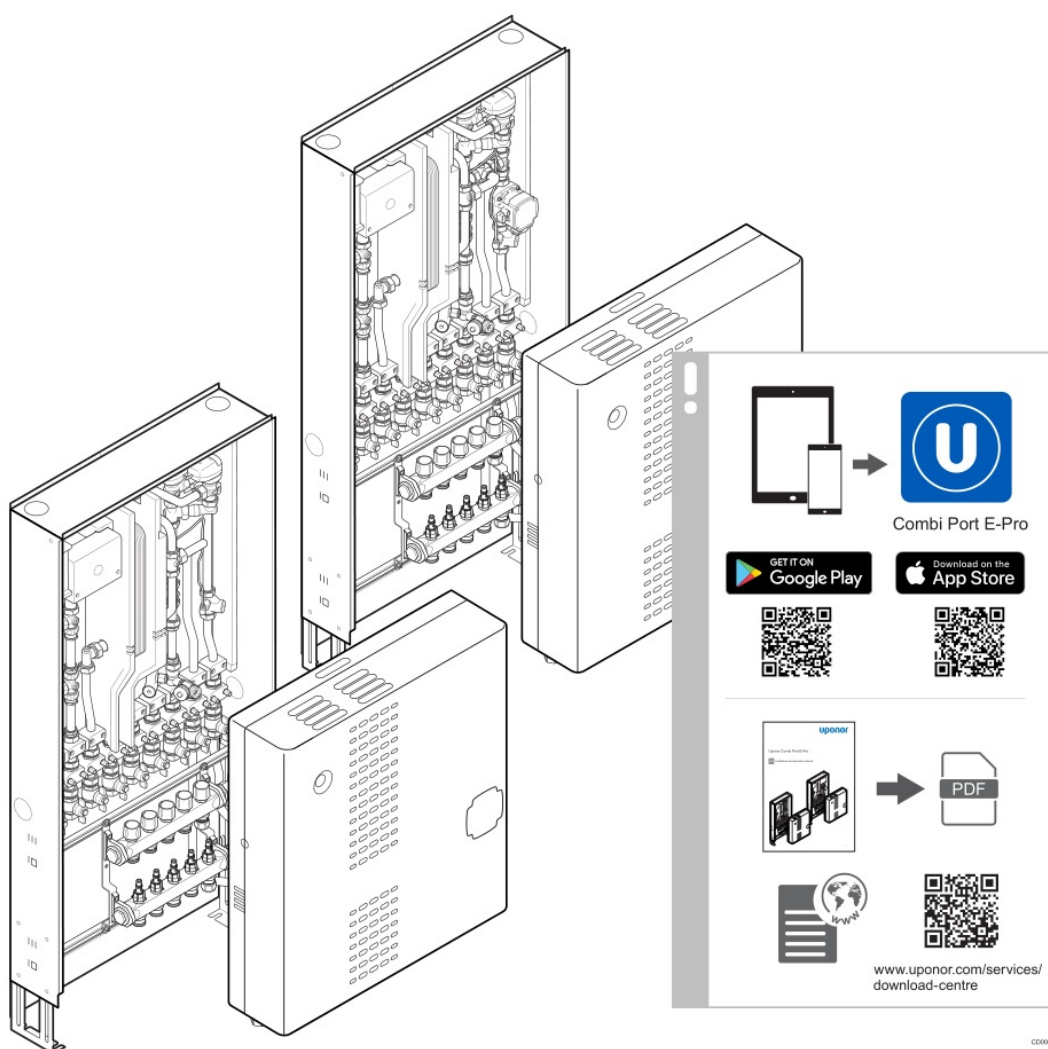
# uponor SD0000339 Combi Port E-Pro Heat Interface Unit User Guide

[Home](#) » [uponor](#) » uponor SD0000339 Combi Port E-Pro Heat Interface Unit User Guide 

uponor SD0000339 Combi Port E-Pro Heat  
Interface Unit User Guide

## Combi Port E-Pro

Quick guide



## **Contents**

**1 Installation**








**2 Operation**

**3 Documents /  
Resources**

**3.1 References**

## **Installation**

### **1.1 General information**

	<p><b>Warning!</b></p> <p>Risk of electric shock if touching the components! The unit operates with a 230 V AC voltage.</p>
	<p><b>Warning!</b></p> <p>Risk of electrical shock! Electrical installation and service behind secured 230 V AC covers must be carried out under the supervision of a qualified electrician.</p>
	<p><b>Warning!</b></p> <p>Uponor system power supply: 230 V AC, 50 Hz.</p> <p>In case of emergency, immediately disconnect the power.</p>
	<p><b>Warning!</b></p> <p>Prior to any work on the controller or the components connected to it, switch off the controller according to the regulations.</p>
	<p><b>Warning!</b></p> <p>The fittings are under pressure. Escaping pressurized media can cause serious injury such as scalding or eye damage.</p> <p>Depressurise the system before performing any installation work.</p> <p>For retrofits to an existing system:</p> <p>Drain the system or close the supply lines of the section and depressurise it.</p>
	<p><b>Warning!</b></p> <p>Risk of injury due to the heavy weight of the unit:</p> <p>Do not perform the installation alone.</p> <p>Always wear safety shoes during the assembly. The unit can be of considerable weight, depending on the configuration. If the station falls over, this could lead to injuries, particularly to the feet.</p>
	<p><b>Caution!</b></p> <p>Leaks in the unit may occur during transport or installation. Check the nuts to ensure that they are properly tightened before the connection to avoid property damages.</p>

Before installing the heat interface unit ensure that:

- the primary pipes are laid in the building site.
- the primary pipe installation is flushed and checked for leaks
- the power and ground cables are routed to the installation site.
- the unit is installed in a dry and frost-free room with an ambient temperature lower than +40 °C.
- the unit is mounted upright (not inclined, upside down or lying down).
- the unit is always easy to access even after the assembly.

## Related illustrations



Illustrations related to the different sections below are available in the end of this document.

### 1.2 Heat interface unit



#### Note

See the dimensional drawings for measurements. All dimensions are given in mm.  
Follow the installation steps to install the heat interface unit.

1. Dismount the frame and door
2. Install the in-wall cabinet
3. Connect the primary supply pipes to the heat interface unit
4. Install the heat interface unit
5. Connect the heat interface unit with the connection rail
6. Connect the underfloor heating pipes to the manifold
7. Install the frame and door to the cabinet

### 1.3 Accessories



#### Note

The installation of accessories is described in the installation and operation manual for the Uponor Combi Port E-Pro.



#### Note

Visit the Uponor download centre for more information regarding the installation and configuration of Uponor Smatrix and Uponor Base flexiboard.

### 1.4 Other components/devices

## A Water and heat measurement

Item	Description
HM	Heat meter
CW	Cold water meter
HW	Hot water meter

## B Strainer



### Caution!

Shut off the water supply to the unit and relieve the pressure before any work with the strainer.



### Note

To open the cold water/primary flow strainer, use internal hexagon (6 mm).  
The strainer collects dirt and its filter can be removed for inspection and cleaning.

## 1.5 Filling and flushing

The filling and draining valve on the primary heating can be used for filling and flushing of the heating system.

## 1.6 Tightness testing



### Warning!

Leaks can cause personal injury and property damages.

## 1.7 Hydraulic installation



### Warning!

Risk of injury due to improper installation!

Ensure that the hydraulic connections are made in a correct way. Leaking connections can cause personal injury.



### Note

Use the hydraulic diagram in the end of the document as an installation guide.

- Do not reduce the specified pipe cross-sections. The connections for optional components (e.g. meters) are capped with black plastic adaptors in the device.

- Replace the plastic fittings with stainless steel 1.4401 pipes if no optional components should be connected. These can be obtained from the supplier.
- Ensure to connect the heating supply and return as well as the hot and cold water correctly.
- Install a filling and draining valve on site at a suitable central point to fill the central heating system.

## 1.8 Electrical installation



### **Warning!**

Risk of electric shock if touching the components! The unit operates with a 230 V AC voltage.



### **Warning!**

Required work must be performed by a qualified installer in accordance with local regulations. This includes electrical connections and installations, set up for operation and maintenance.



### **Note**

Use the wiring diagrams in the end of the document as installation guides.

## 1.9 Technical specifications

<b>Uponor Combi Port E-Pro</b>	<b>Value</b>
Medium	Heating water according to VDI 2035
Operating temperature	5-85 °C
Max. operating pressure	10 bar
Max. primary differential pressure	1,2 bar
<b>Uponor Combi Port E-Pro controller</b>	<b>Value</b>
Operating voltage	230 V AC, 50 Hz
Power consumption	1 W
Safety	T 2 A, 250 V
Ambient temperature	-10 °C ... +40 °C (max.)
Protection code	IP 42
Pump/relay output	230 V AC, 200 W (max.)
Valve output	See table below
<b>Material</b>	<b>Value</b>
Fittings, sanitary	CW617N
Fittings, heating	CW617N, CW614N
Seals	According to DVGW KTW, W270
Turbine	POM with KTW approval
Insulation	EPP
Plate heat exchanger	1.4404
Soldering	Copper, vacinox
Pipes	1.4404
<b>Uponor Vario S manifold</b>	<b>Value</b>
Medium	Heating water according to VDI 2035
Operating temperature	5-60 °C
Operating pressure	6 bar
<b>Grundfos pump UPM3</b>	<b>Value</b>
Medium	Heating water according to VDI 2035
Operating temperature	5-60 °C
Operating pressure	10 bar
Connection	DN 15 (G1")
Power connection	230 V, 50/60 Hz
Electrical current, max.	0.44 A

## Operation

### 2.1 Visual inspection





### **Caution!**

Incorrect finishing of the installation can lead to property damage.



### **Note**

If an installation error is found during visual inspection, temporarily stop and correct the error.

Finish the installation by following these steps:

1. Check the complete installation:
  - 1.1. Make sure that the hydraulics are connected correctly.
  - 1.2. Check that any dirt accumulated during installation and/ or dust on the unit has been removed properly. Check strainers and, if necessary, flush/ clean them.
  - 1.3. Check the tightness of all gaskets on pipe – and device connections and tighten them if necessary. When tightening connections, always lock the opposite side.
  - 1.4. Optional: Check that all electrical connections have been made correctly, including polarity of the mains connection and that earthing is assured.
2. Check that the installation is filled/ flushed and vented.

## **2.2 Changing the pump settings**



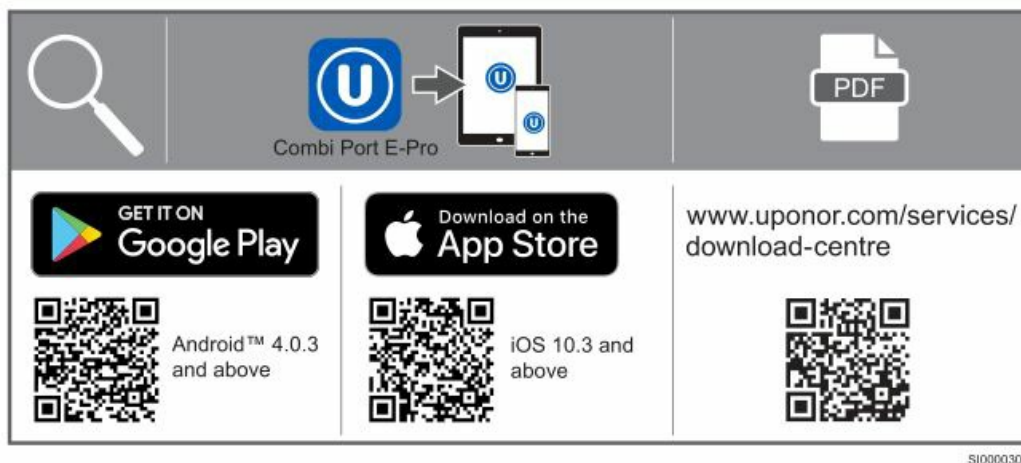
### **Note**

It is recommended that the pump runs at constant pressure when used for underfloor heating. The factory setting of the pump is not set to constant pressure and must therefore be changed

The pump (Grundfos UPM3) has to be set to the constant pressure modulus ( $\Delta p$ -c) to enable an optimal operation of the underfloor heating system.

The settings are done on the pump house as described in the installation and operation manual.

## **2.3 Configuration via Combi Port E-Pro app**



[App Store](#)  
[Google Play](#)

1. Download the Uponor Combi Port E-Pro app. It is available both for iOS and Android mobile devices.
2. Scan the QR code available on the Uponor Combi Port E-Pro controller.
3. Press the blue button in the middle of the Uponor Combi Port E-Pro controller until it flashes. Continue in the App.
4. Helptexts and guidance is available in the app.
5. The app consists of three different user levels (user, installer, etc). Access is given by activating the received code.
  - 5.1. Fill in the code in menu "Settings".
  - 5.2. Reconnect the controller to get the new level (push A, see "App structure – Overview").

## App overview

Item	Description
A	Connection status
B	Settings
C	Hot water
D	Circulation
E	Supplier
F	Heating
G	System

## A Connection status

### Description

Indication of successful connection

Connection can be manually activated or deactivated

## B Settings

## Possible settings

Time/date

Language

Controller settings

Load/save configuration

Startup protocol

## C Hot water

### Possible settings

Hot water temperature

Valve position

Load detection

Adaption period

ECO keep warm

RTL

### Displayed value

Hot water temperature

Hot water flow

Cold water temperature

Performance

## D Circulation

### Possible settings

Calculated circulation setpoint

Return setpoint

Follow-up time

Permanent circulation

Time program circulation

### Displayed value

Pump status

## E Supplier

Possible settings	Displayed value
Supply temperature primary	Flow primary
Return primary	
Keep warm temperature	

## F Heating

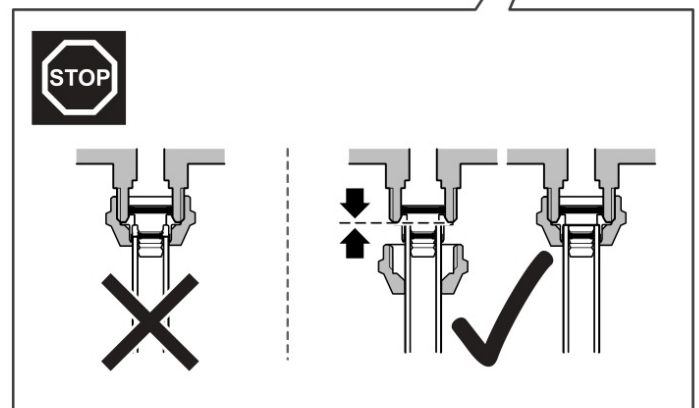
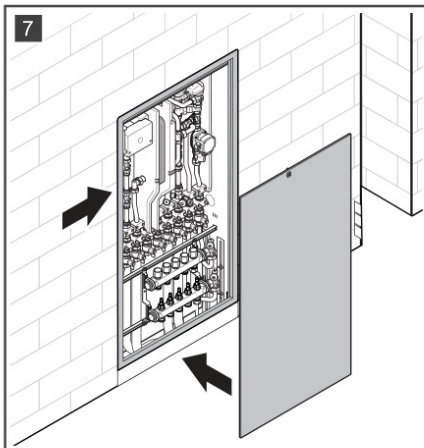
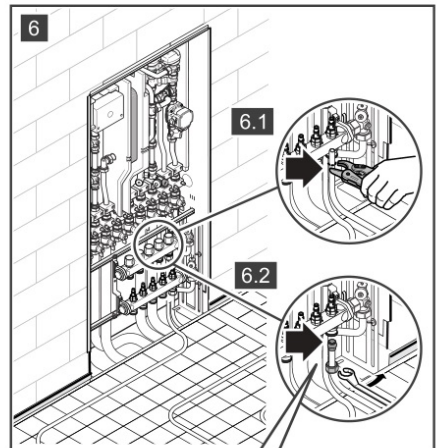
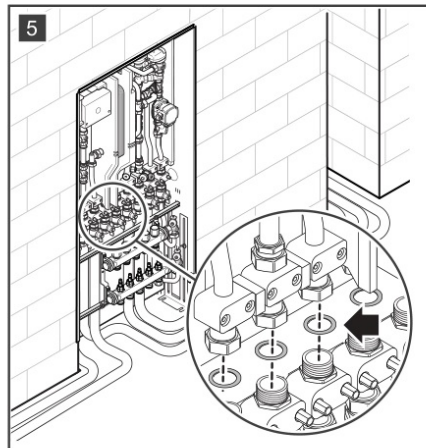
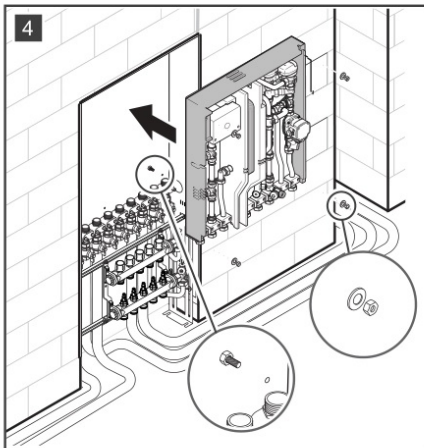
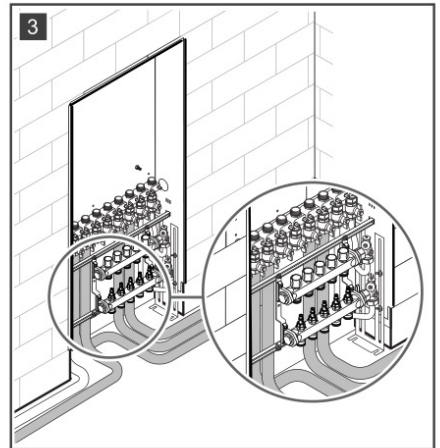
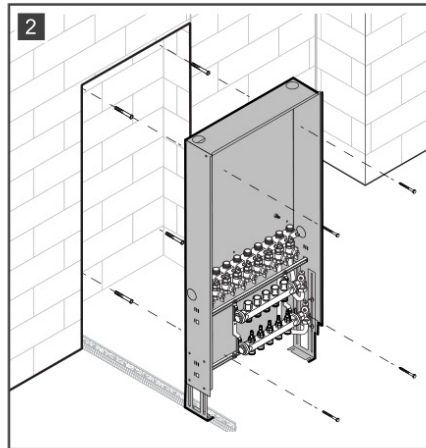
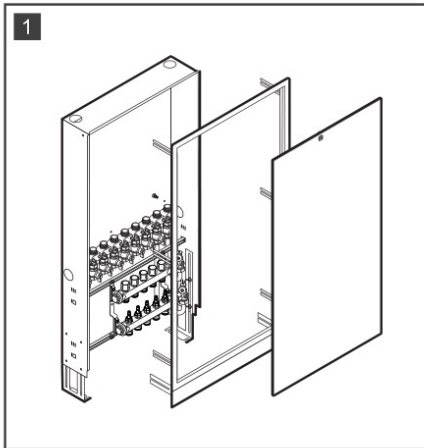
Possible settings	Displayed value
Operating mode	Supply secondary
Control mode	Return secondary
Time program	Outdoor temperature (optional)
Heating curve (optional)	Room temperature (optional)
ECO mode (heating)	External input (optional)
Adaptive heating	
Pump setting	

## G System

Possible settings	Displayed value
Module selection	Software version
Screed drying program	Controller type
Start up, step by step	



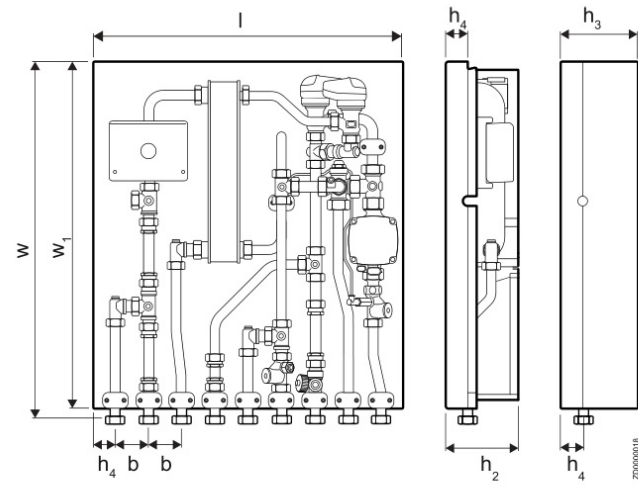
## 1.2



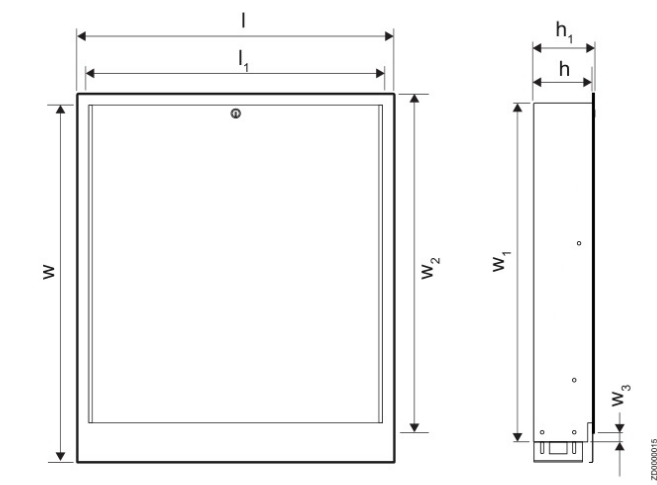


# 1.2

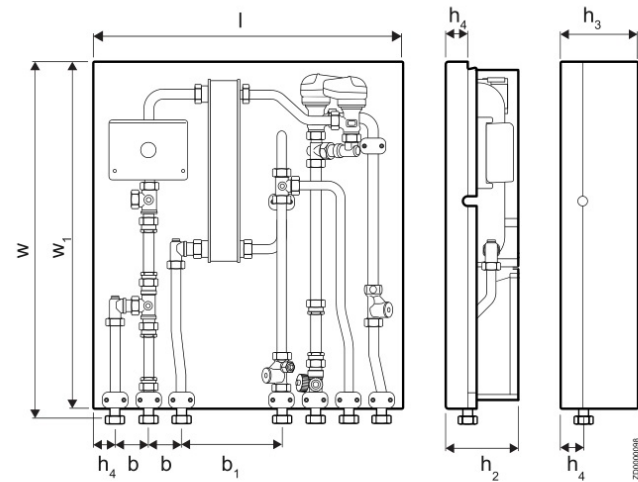
SI0000335



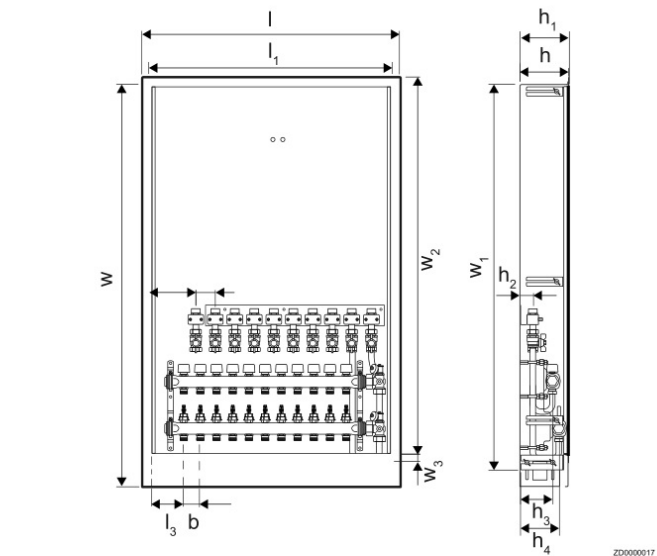
l	w	w <sub>1</sub>	h <sub>2</sub>	h <sub>3</sub>	h <sub>4</sub>	b
560	648	630	132	140	40	60



l	l <sub>1</sub>	w	w <sub>1</sub>	w <sub>2</sub>	w <sub>3</sub>	h	h <sub>1</sub>
795	750	901.5	850	849.5	22.85	150	151.5

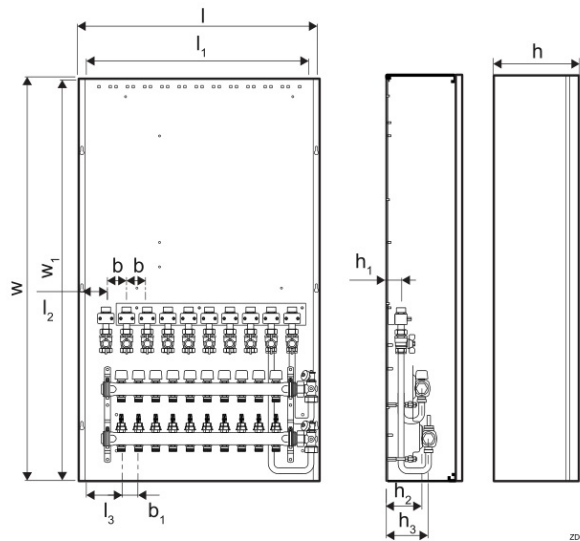


l	w	w <sub>1</sub>	h <sub>2</sub>	h <sub>3</sub>	h <sub>4</sub>	b	b <sub>1</sub>
560	648	630	132	140	40	60	180



l	l <sub>1</sub>	l <sub>2</sub>	l <sub>3</sub>	w	w <sub>1</sub>	w <sub>2</sub>	w <sub>3</sub>
795	750	144	105	1242	1190	1189.5	22.85

h	h <sub>1</sub>	h <sub>2</sub>	h <sub>3</sub>	h <sub>4</sub>	b	b <sub>1</sub>
150	151.5	40	100	120	50	60



ZD0000016

<b>l</b>	<b>l<sub>1</sub></b>	<b>l<sub>2</sub></b>	<b>l<sub>3</sub></b>	<b>w</b>	<b>w<sub>1</sub></b>
754	699	79	113	1150	1170

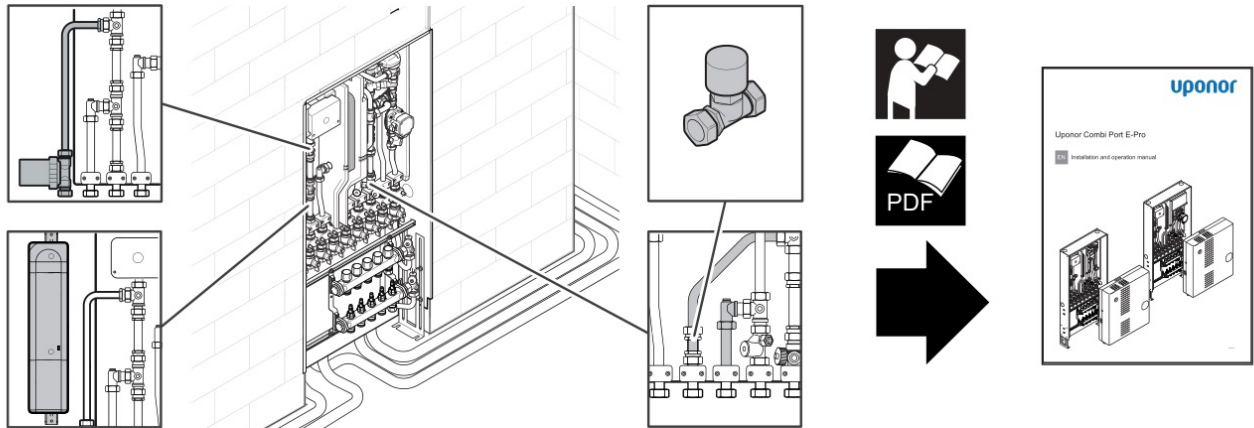
  

<b>h</b>	<b>h<sub>1</sub></b>	<b>h<sub>2</sub></b>	<b>h<sub>3</sub></b>	<b>b</b>	<b>b<sub>1</sub></b>
247	40	105	125	60	50

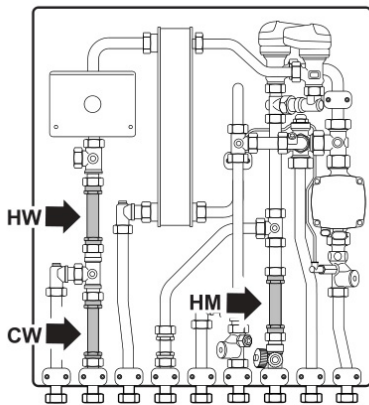




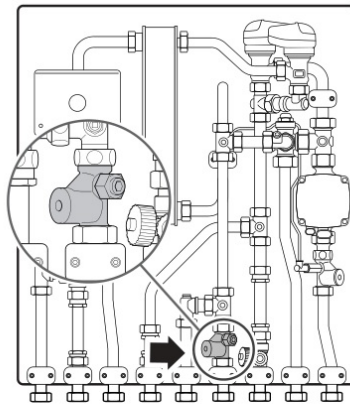
## 1.3



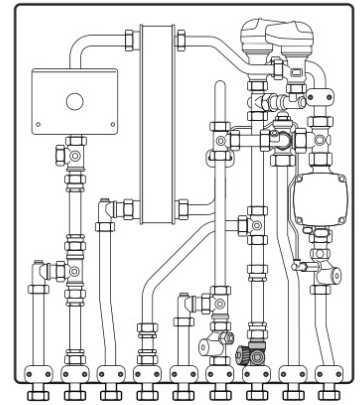
## 1.4 A



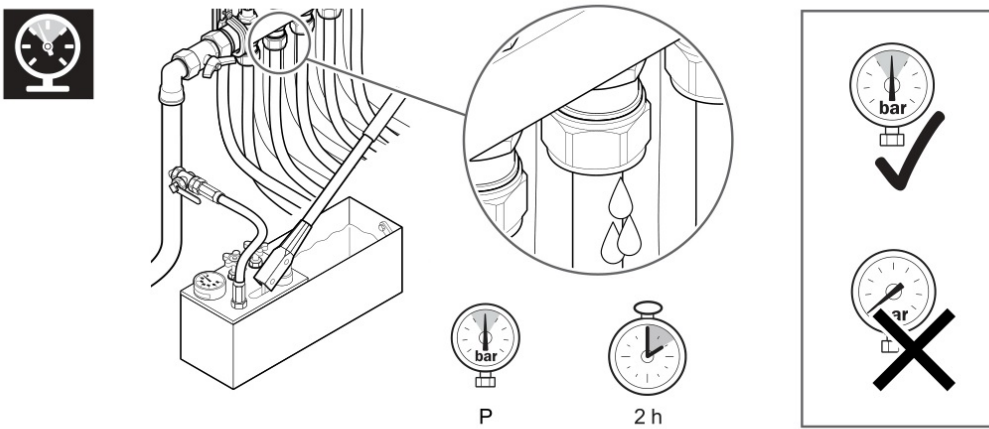
## 1.4 B



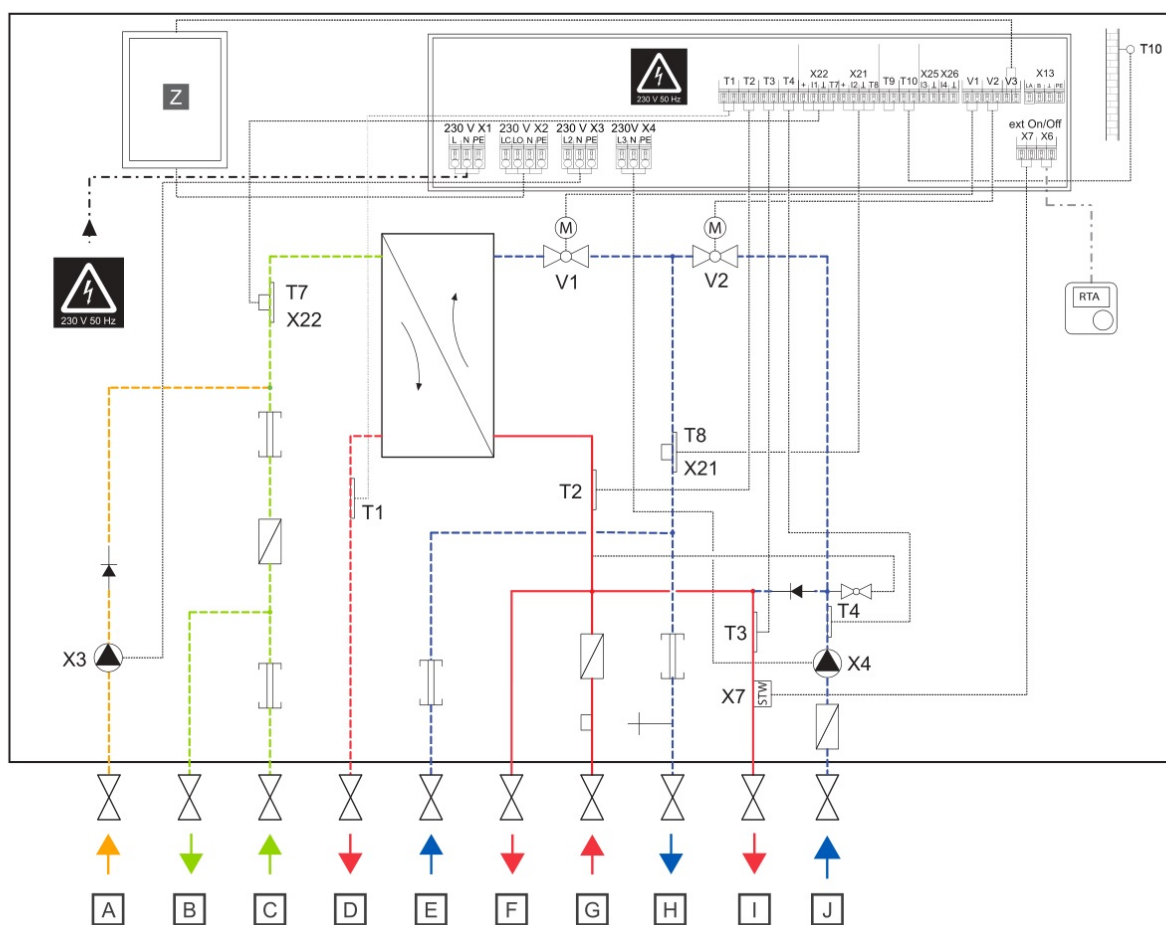
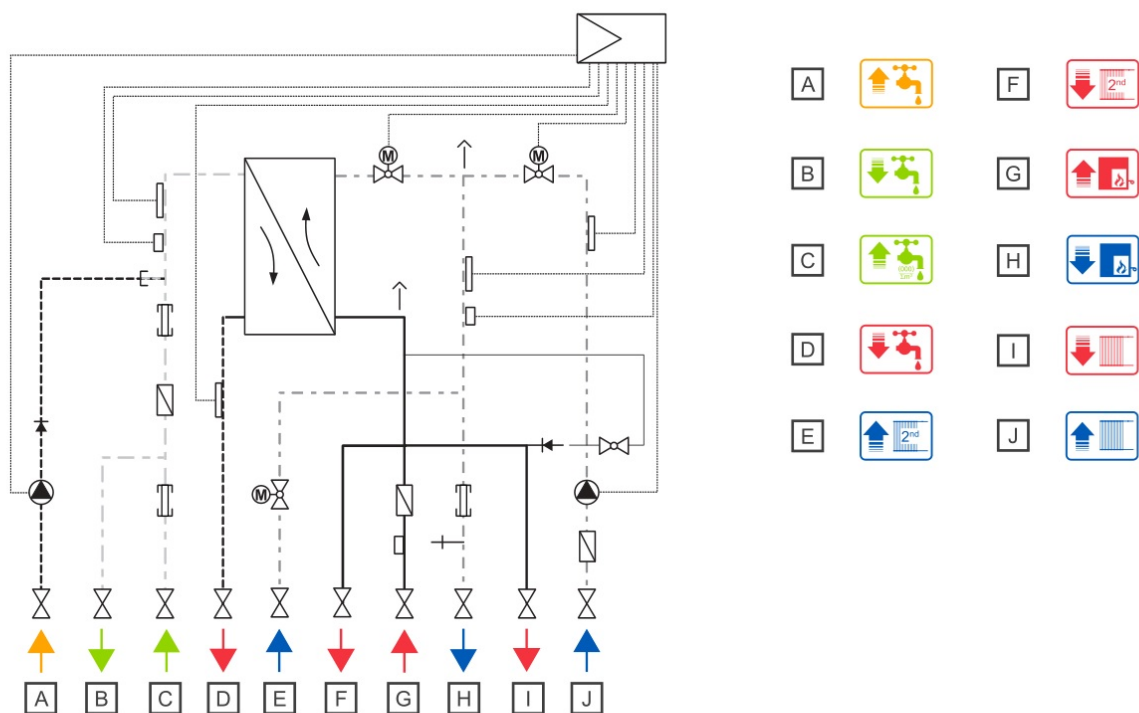
## 1.5

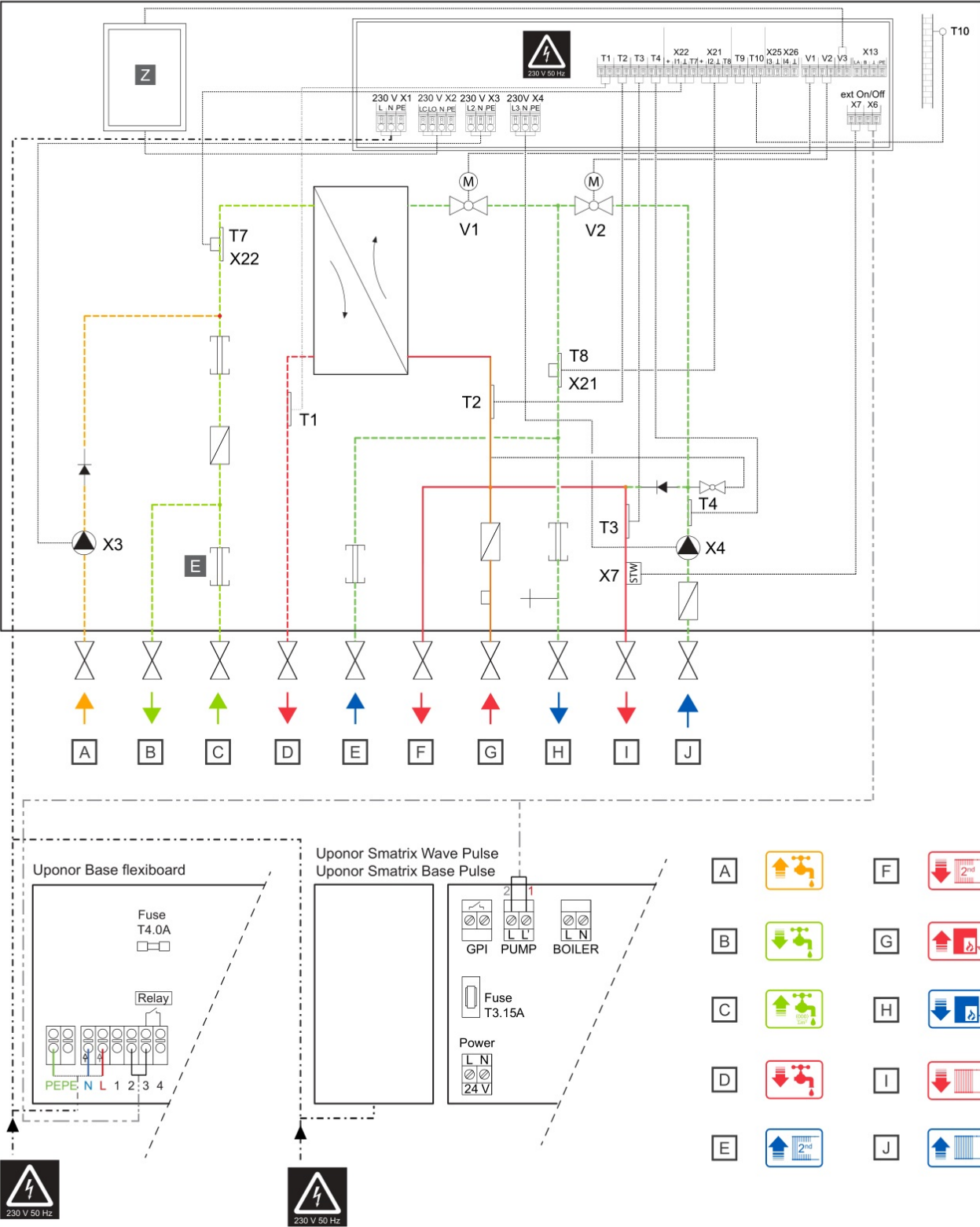


## 1.6



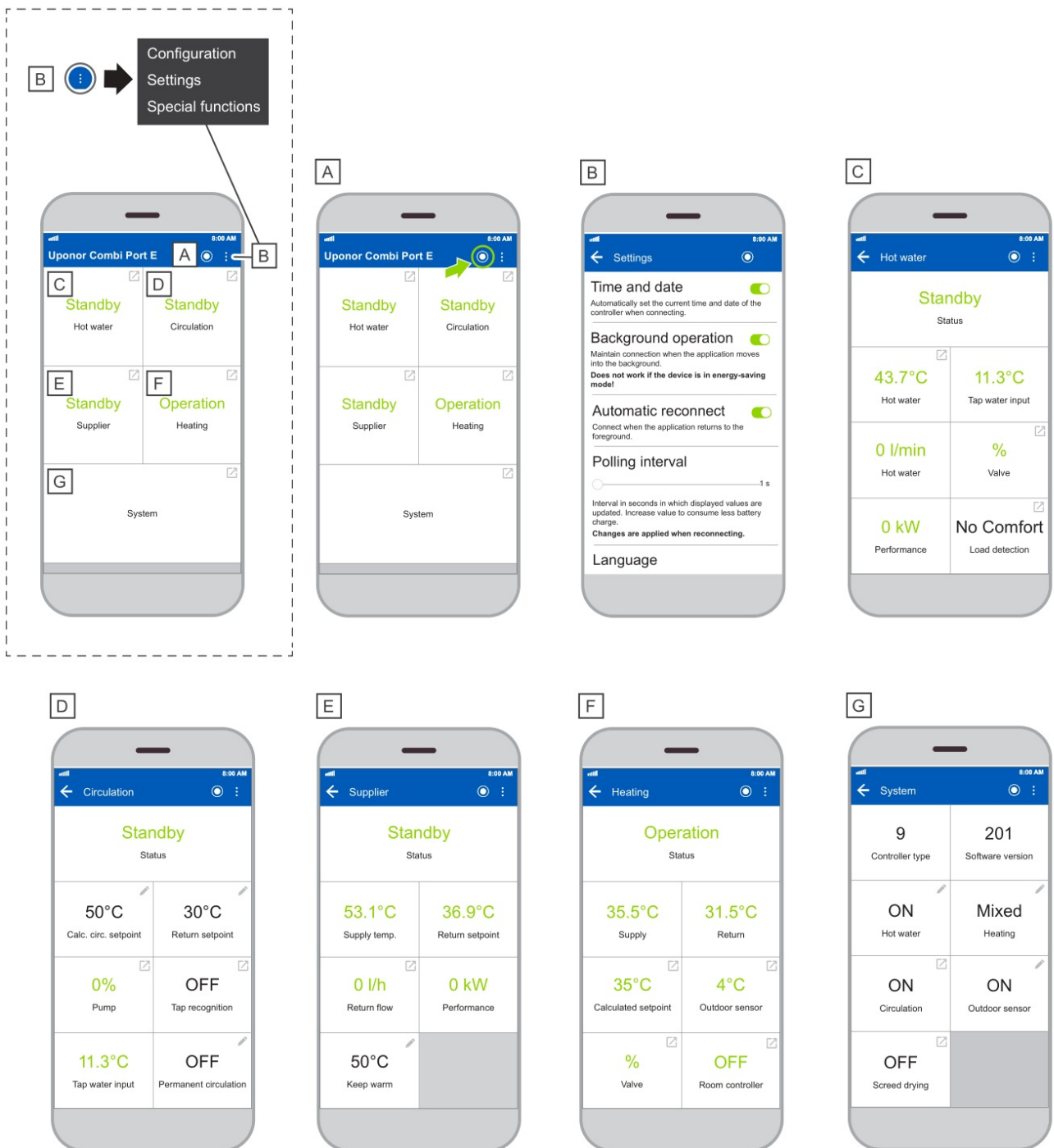








## 2.3



810000336

**Uponor GmbH**  
Industriestraße 56,  
D-97437 Hassfurt, Germany  
1143310 v1\_03\_2024\_INT  
Production: Uponor/DCO

# uponor

Uponor reserves the right to make changes, without prior notification, to the specification of incorporated components in line with its policy of continuous improvement and

development.



[www.uponor.com](http://www.uponor.com)

Documents / Resources

	<p><a href="#">uponor SD0000339 Combi Port E-Pro Heat Interface Unit</a> [pdf] User Guide SD0000339 Combi Port E-Pro Heat Interface Unit, SD0000339, Combi Port E-Pro Heat Interfac e Unit, Heat Interface Unit, Interface Unit</p>
---	---

References

- [User Manual](#)

[Manuals+](#), [Privacy Policy](#)

This website is an independent publication and is neither affiliated with nor endorsed by any of the trademark owners. The "Bluetooth®" word mark and logos are registered trademarks owned by Bluetooth SIG, Inc. The "Wi-Fi®" word mark and logos are registered trademarks owned by the Wi-Fi Alliance. Any use of these marks on this website does not imply any affiliation with or endorsement.