



Contents [[hide](#)]

- [1 Uniview Camera App](#)
- [2 Product Specifications](#)
- [3 Product Information](#)
- [4 Product Usage Instructions](#)
- [5 Description](#)
- [6 Operating Steps](#)
 - [6.1 Use the Reset Button to Hard Reset](#)
- [7 FAQ](#)
- [8 Documents / Resources](#)
 - [8.1 References](#)



Uniview Camera App



Product Specifications

- **Title:** How to Default a Uniview Camera in Different Ways?
- **Product:** IPC
- **Version:** V1.1
- **Date:** 9/26/2023

Product Information

Customers may encounter some problems when resetting the IPC. The methods for resetting cameras may vary between different models.

Product Usage Instructions

Resetting Using the Reset Button

1. Remove the Micro SD card cover first.
2. Power on the camera.
3. Use a toothpick or paper clip to press and hold the RST button for about 15 seconds till the web indicates that the camera is restarting.
4. The camera will be restored to the default settings after the startup.

Defaulting from the Web Interface

Log into the camera's web interface and default it under: Setup > System > Maintenance > Config Management. You can choose to restore all settings without keeping current network and user settings if you wish to do a factory default.

Using EZtools to Reset the Camera

Connect your computer to the same network as the IPC and download/install EZtools 3.0 or 2.0 on your Windows computer. EZTools 1.0 does not support defaulting a Uniview device. Restoring Defaults means restoring all parameters of a device to factory defaults except network, user, and time parameters. Restoring Factory Defaults means restoring all parameters of a device to factory defaults.

Description

Customers may encounter some problems when resetting the IPC. The methods for resetting cameras may vary between different models.

Note: This method applies to most scenarios. If the method cannot solve your problem, it is recommended to consult our Tech Support Team.

https://global.uniview.com/Support/Service_Hotline/

Operating Steps

Use the Reset Button to Hard Reset

Fisheye camera

- **Step 1:** Remove the Micro SD card cover first.
- **Step 2:** Power on the camera
- **Step 3:** Use a toothpick or paper clip to press and hold the RST button for about 15 seconds till the web indicates that the camera is restarting.
- **Step 4:** Then the camera will be restored to the default settings after the startup.

Note: The RST button only works within ten minutes after the camera is powered on.

PTZ & Bullet camera

- **Step 1:** Find the reset button on the back or the rear of your camera.
- **Step 2:** Power on the camera again and perform the next step within 10 minutes.

- **Step 3** Press and hold the reset button for about 15 seconds until the PWR light on the camera becomes red.

Dome & Box camera

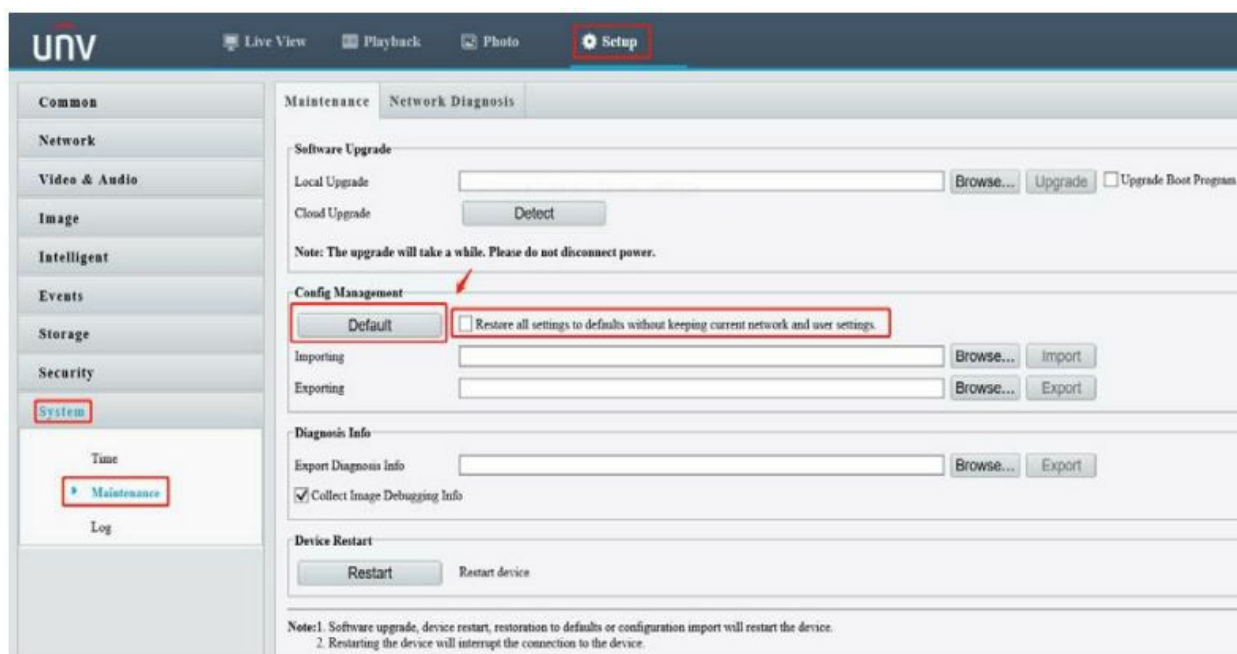
- **Step 1:** Prepare a needle-like object, such as a toothpick or paper clip first.
- **Step 2:** Find the reset button on the back of the rear of your camera.
- **Step 3:** Power on the camera and perform the next step within 10 minutes.
- **Step 4** Press and hold the reset button for about 15 seconds until the PWR light on the camera becomes red.
- **Step 5:** Wait for the camera to restart. The manual reset is then completed.

Note: There are two possible outcomes for pressing and holding RST:

1. Enter/Exit auxiliary focus mode: press and hold for 3 to 10 seconds.
2. Factory reset: press and hold for more than 10 seconds

Default from the web interface of a camera

Log into the camera's web interface and default it under: Setup>System>Maintenance>Maintenance>Config Management.



Note: You can check Restore all settings without keeping current network and user settings if you wish to do a factory default.

Use EZtools to reset the camera.

Please connect your computer to the same network as the IPC, and then download and install EZtools 3.0 or 2.0 on your Windows computer first.

Note: EZTools 1.0 does not support defaulting a Uniview device.

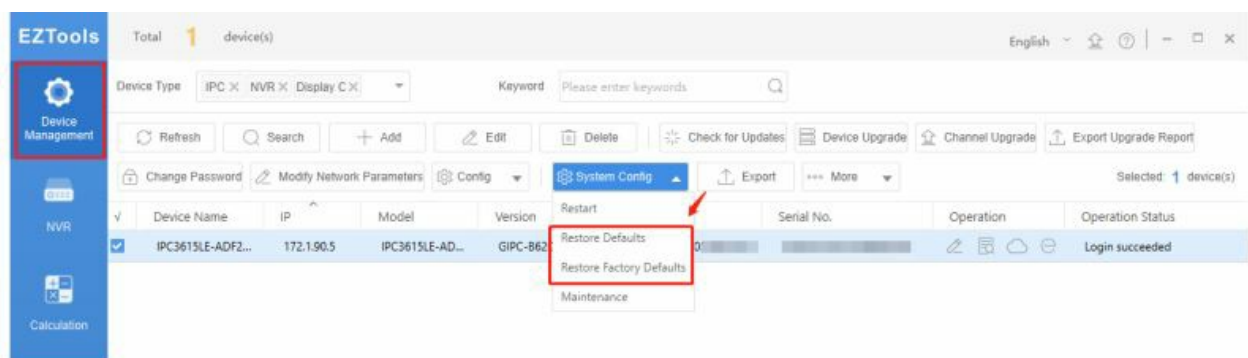
EZTools 3.0

- **Restoring Defaults** means to restore all the parameters of a device to factory defaults except network, user, and time parameters.

Select the target devices, click System Configuration>Restore Defaults, and then confirm.

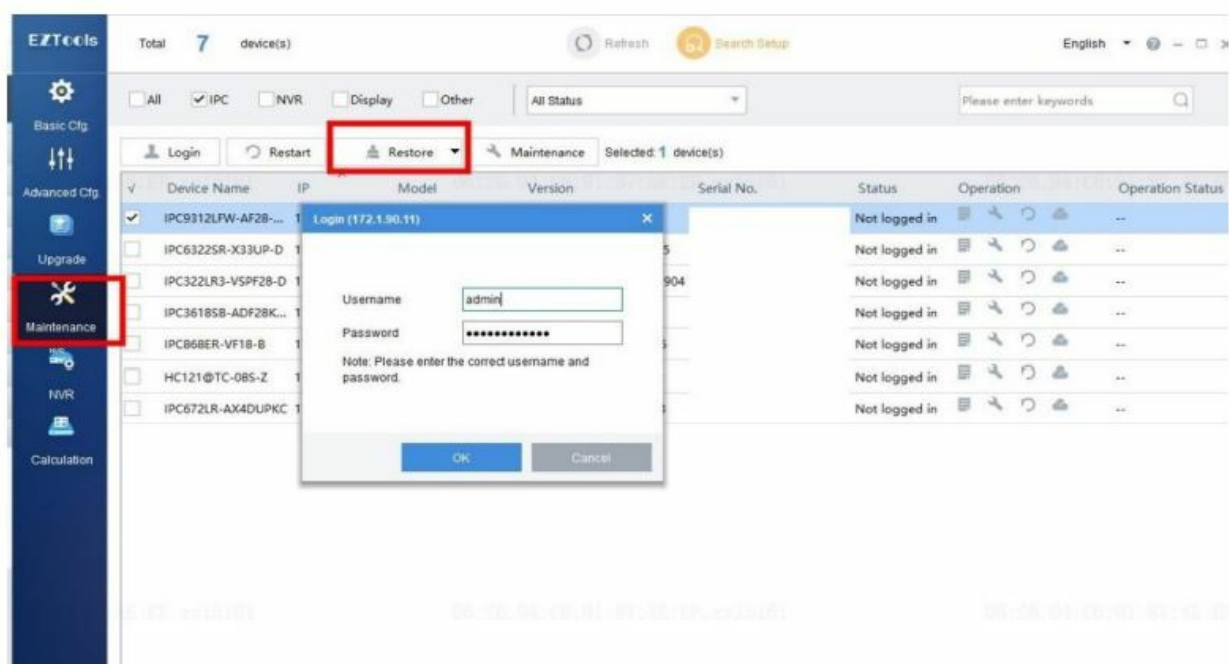
- **Restoring Factory Defaults** means restoring all the parameters of a device to factory defaults.

Select the target devices, click System Configuration>Restore Factory Defaults, and then confirm.



EZTools 2.0

Log in to the camera on EZtools and click Restore under Maintenance to reset it.




Note: Sometimes, the IP address of the camera cannot be found on EZtools even when they are connected to the same LAN. If this happens, please connect the cameras directly to the computer's RJ45 port to see if you can search and find their IP addresses on EZtools. If you can find the camera, please refer to the steps above.

FAQ

What should I do if I cannot find the camera's IP address on EZtools?


If the IP address of the camera cannot be found on EZtools even when connected to the same LAN, try connecting the cameras directly to the computer's RJ45 port to see if you can search and find its IP address on EZtools. If you can find the camera, please refer to the steps above.


Documents / Resources

 <small>How to Default a Uniview Camera in Different Ways?</small>	unv Uniview Camera App [pdf] User Guide IPC, Uniview Camera App, Camera App, App
----------------------------------------------------------------------------------------------------------------------------------------------------------	-----------------------------------------------------------------------------------------------------

References

- [User Manual](#)

 app, Camera App, IPC, Uniview Camera App,

 UNV UNV

Leave a comment

Your email address will not be published. Required fields are marked *

Comment *

Name

Email

Website

☐ Save my name, email, and website in this browser for the next time I comment.

Post Comment

Search:

e.g. whirlpool wrf535swhz

Search

[Manuals+](#) | [Upload](#) | [Deep Search](#) | [Privacy Policy](#) | [@manuals.plus](#) | [YouTube](#)

This website is an independent publication and is neither affiliated with nor endorsed by any of the trademark owners. The "Bluetooth®" word mark and logos are registered trademarks owned by Bluetooth SIG, Inc. The "Wi-Fi®" word mark and logos are registered trademarks owned by the Wi-Fi Alliance. Any use of these marks on this website does not imply any affiliation with or endorsement.