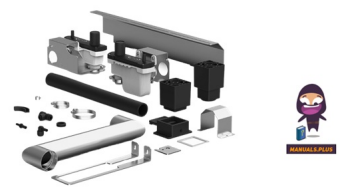


**UNOX**  
ACQC-0013-E  
Stacking Kit  
Compact



# UNOX XACQC-0013-E Stacking Kit Compact Instructions

[Home](#) » [UNOX](#) » UNOX XACQC-0013-E Stacking Kit Compact Instructions 

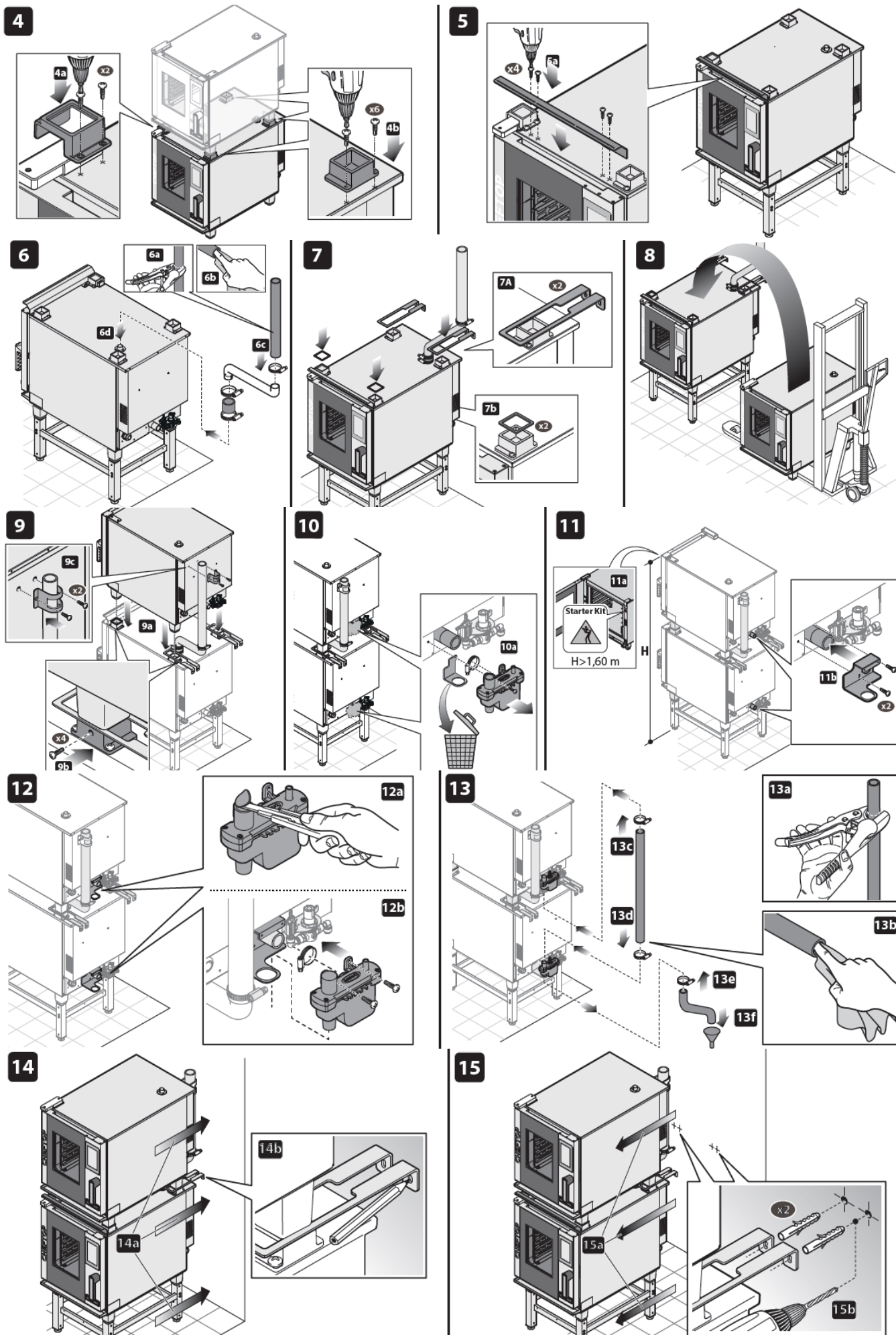
## Contents

- [1 UNOX XACQC-0013-E Stacking Kit Compact](#)
- [2 TOOLS](#)
- [3 Product Usage Instructions](#)
- [4 Installation](#)
- [5 Safety Precautions](#)
- [6 Maintenance](#)
- [7 DIMENSION](#)
- [8 OVERVIEW](#)
- [9 Frequently Asked Questions](#)
- [10 Documents / Resources](#)
  - [10.1 References](#)
- [11 Related Posts](#)



**UNOX XACQC-0013-E Stacking Kit Compact**





## Installation

Place the assembled stacking kit on top of the designated appliance following the manufacturer's guidelines.

## Stacking Configuration

Ensure that the stacking kit is securely attached to both appliances to prevent any accidents.

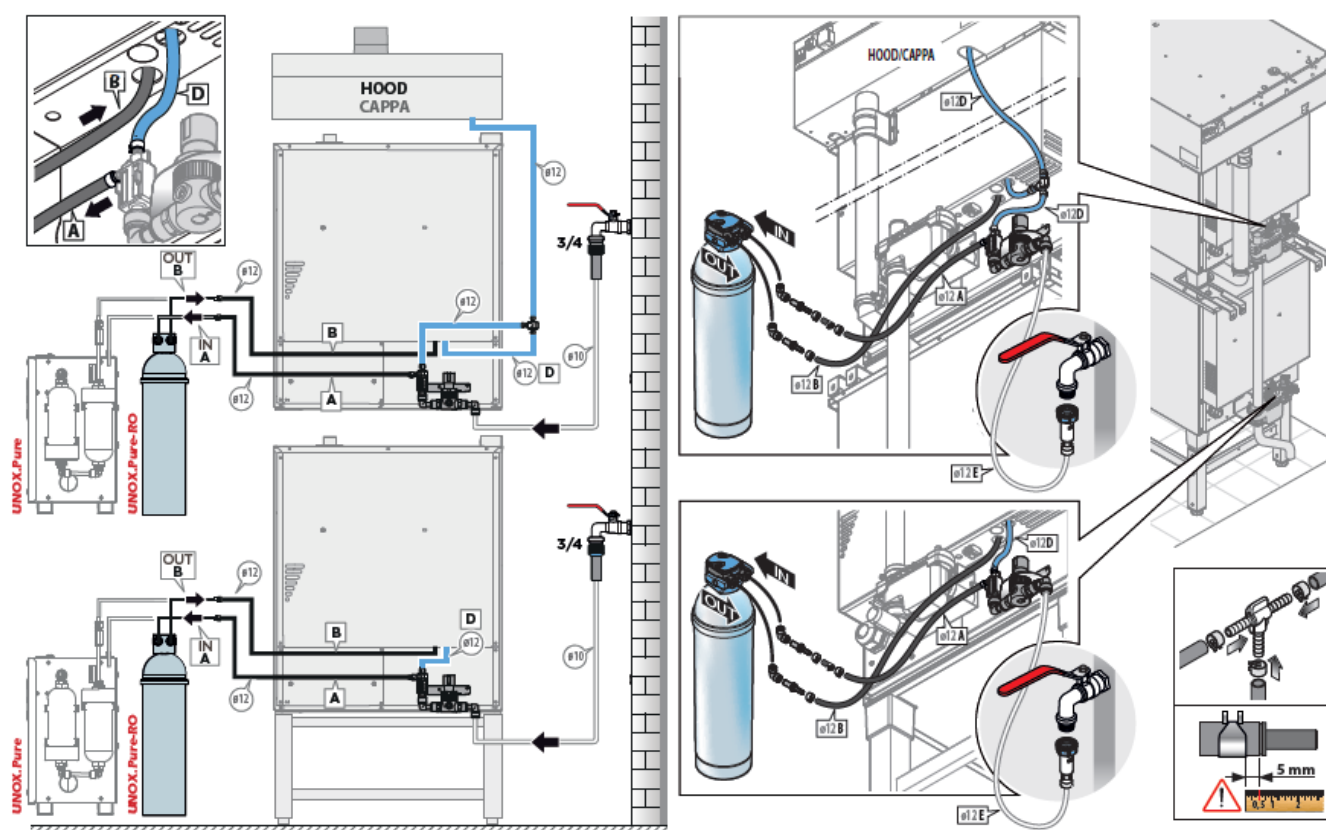
## Safety Precautions

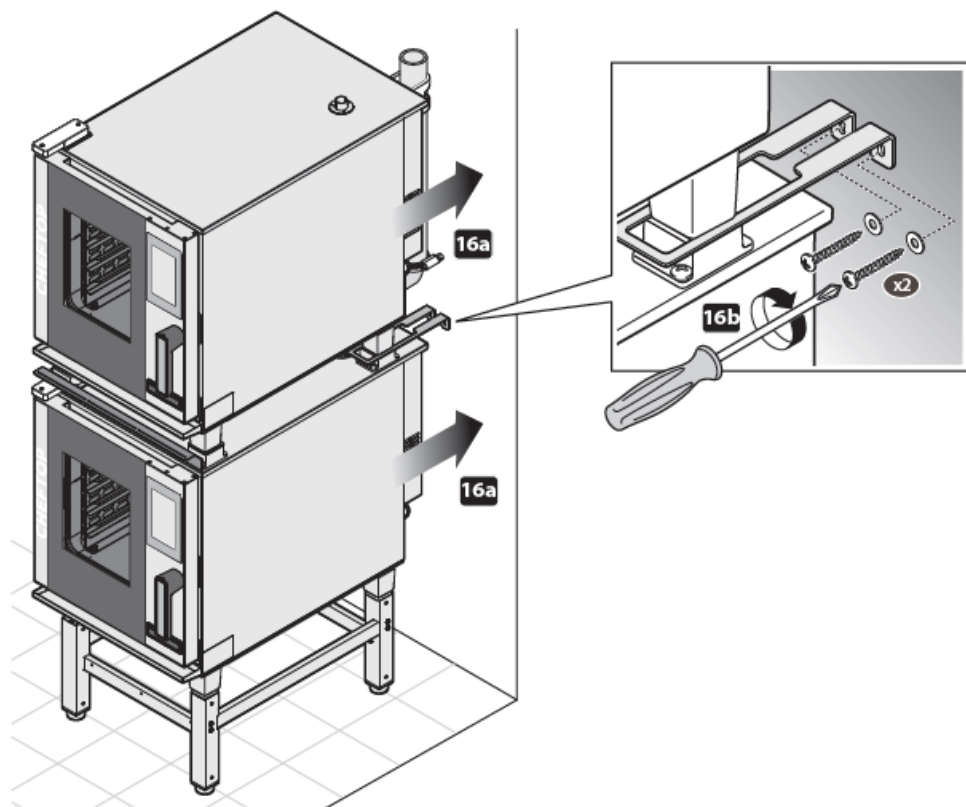
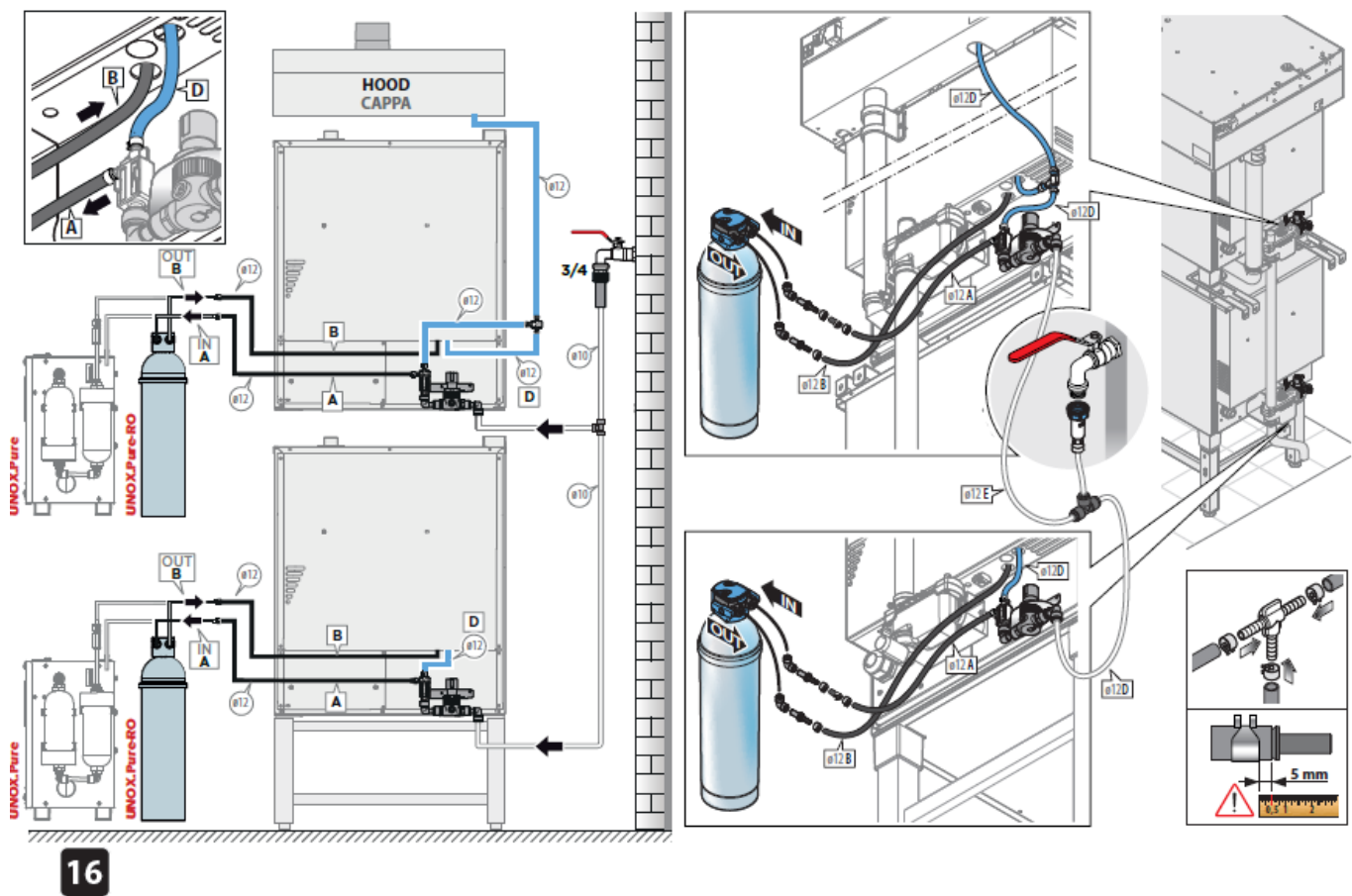
Always make sure the stacked appliances are stable and level to avoid any tipping hazards.

## Maintenance

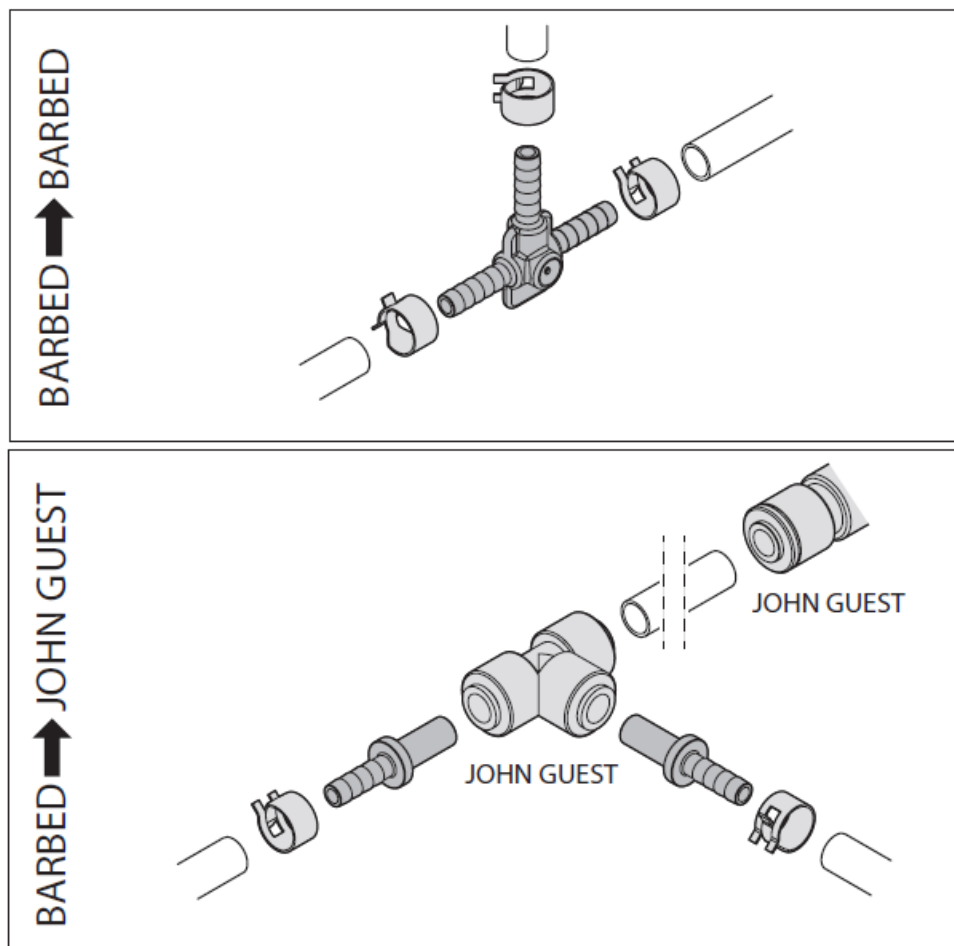
Regularly check the stacking kit for any signs of wear and tear and tighten any loose screws or bolts as needed.

## DIMENSION





**OVERVIEW**



## Frequently Asked Questions

- **Q: Can I stack any type of appliance with this kit?**

A: The stacking kit is designed to work with specific models mentioned in the user manual. Make sure to check compatibility before stacking.

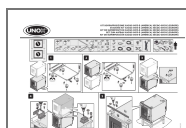
- **Q: Is it necessary to hire a professional for installation?**

A: While installation can be done DIY, it's recommended to seek professional help to ensure proper setup and safety.

- **Q: What is the weight limit for stacked appliances using this kit?**

A: Refer to the user manual for weight limit recommendations. Exceeding the weight limit can be dangerous.

## Documents / Resources



[UNOX XACQC-0013-E Stacking Kit Compact](#) [pdf] Instructions

XACQC-0013-E, XECQC-0013-E, XACQC-0013-E Stacking Kit Compact, XACQC-0013-E, Stacking Kit Compact, Kit Compact

## References

- [User Manual](#)

