

universalblue UVP1005-24 Standing Fan



universalblue UVP1005-24 Standing Fan User Manual

[Home](#) » [universalblue](#) » universalblue UVP1005-24 Standing Fan User Manual 

Contents

- 1 universalblue UVP1005-24 Standing Fan
- 2 IMPORTANT SAFEGUARDS
- 3 PRODUCT FEATURES
- 4 CLEANING AND MAINTENANCE
- 5 TROUBLESHOOTING
- 6 WARRANTY
- 7 Documents / Resources
 - 7.1 References
- 8 Related Posts

universalblue

universalblue UVP1005-24 Standing Fan



User manual

- UVP1005-24
- UVP1006-24
- www.universalblue.es

Universal for Engineering Industries Spain, S.L. reserves the right to make any change in the specifications and features of the products without prior notice, due to the continuous improvement of the products. The images shown here are illustrative, so there may be slight differences between the images and the product you have purchased. Universal for Engineering Industries Spain, S.L., is not responsible for any printing errors.

Model	UVP1005-24	UVP1006-24
Product dimensions (cm)	43 x 43 x 125	
Tension (V)	220	
Frequency (Hz)	50	
Power (W)	45	
Noise level (dB)	45 – 60	
Fan speed (rpm)	1250	
Control	Mechanical	
Swing	Yes	
Color	White	Black
Grill	Mesh	
Height	Adjustable	
Base	Round	

Issue	Possible causes	Solution
The product does not blow any air.	<ul style="list-style-type: none"> • The plug is not correctly connected. • The speed button is not pressed properly. • The back grille is blocked. 	<ul style="list-style-type: none"> • Connect the appliance to a power source • Press the button for the desired speed correctly. • Remove whatever is blocking the back grille.
Product makes strange noise during operation	<ul style="list-style-type: none"> • The product is not assembled properly. • There is a part or element that is rubbing against the blades. 	<ul style="list-style-type: none"> • Check that you have assembled the product correctly and that all parts are securely fastened. • Check and remove any objects that may be rubbing against the blades.

Thank you for deciding to purchase a UNIVERSALBLUE product.

- We recommend you to spend some time to read this Instruction Manual in order to fully understand how to use

it correctly..

- Read all the safety instructions carefully before use and keep this Instruction / Installation Manual for future reference.
- Please, consider that this appliance is for domestic use only.

IMPORTANT SAFEGUARDS

- THIS APPLIANCE COMPLIES WITH THE PERTINENT REGULATIONS IN FORCE.
- PLEASE READ CAREFULLY AND THOROUGHLY THE INSTRUCTIONS BEFORE USING THE APPLIANCE TO AVOID ANY INJURIES AND/OR PERSONAL AND MATERIAL DAMAGES.
- THIS APPLIANCE HAS BEEN DESIGNED FOR HOUSEHOLD USE ONLY.
- ACCORDING TO THE CURRENT INTERNATIONAL REGULATION IEC60335-1, UNIVERSALBLUE ADVISES THAT YOU MUST READ AND FOLLOW THE INDICATIONS DESCRIBED IN THIS MANUAL, CONCERNING UNPACKING, ASSEMBLY, INSTALLATION AND USE OF THE APPLIANCE
- Keep these instructions handy for future needs, as well as the warranty, the purchase receipt and the packaging. If the appliance is transferred to a different user, so should be the instructions.
- Before using the appliance for the first time, please do not use if it was dropped and/or there is any sign of damage. Do not use it either in case you notice any malfunctioning while using it.
- Do not use the appliance for any other purpose than the ones described in the instruction manual. Warranty shall be void in the case of incorrect use of the product.
- The purchased product may vary with respect to the product described in this manual depending on the model and year of acquisition.

User group

- Children under 8 years or people with physical, sensory or mental impairments or without relevant knowledge or experience.
- People included in this group must follow these instructions:
- They must remain away from the packaging material and any other material which, due to playing with it or misusing it may lead to suffocation or mobility issues.
- Pay special attention to small parts contained with the packaging that could be swallowed by accident and lead to fatal circumstances. They must remain away from the appliance if they are not being supervised (they must not connect, disconnect, operate or clean the appliance).
- In case they can acknowledge and understand (after the pertinent explanation) the risks of operating the appliance incorrectly, they will be able to operate the appliance without any supervision.
- Take special care of the surfaces that may get hot on the appliance, because they can cause skin burns (especially on the sensitive skin of young children)
- Electric shock hazard: do not make any modifications to the device yourself.
- Do not disconnect the appliance if your hands are wet.
- If it does not work properly, contact a qualified electrician to review and fix your appliance. Please do not try to fix it by yourself.
- Always connect the appliance to a power source with the same voltage, frequency and rating as indicated on the product identification plate. Do not pull the power cord, not even to disconnect it from the power supply.
- Do not use the product if it falls, is damaged or shows signs of malfunction. Do not use the product with a

damaged plug or cable. Go to the store where you purchased this item.

- Do not submerge or expose the product or de power cord to the rain, humidity, or any liquid
- Before assembling or disassembling any parts, and before proceeding to cleaning it, disconnect and unplug the appliance. Assemble the fan completely before you turn it on.
- If you spill any water on the floor: clean it immediately.
- Accident hazard: Follow the indications as described here.
- Do not turn the appliance on until it is fully assembled, it could be very dangerous.
- Do not use the fan without the grille.
- Do not leave the fan in operation unsupervised.
- This product should not be used in places where there is nearby water, such as bathrooms or swimming pools, or where the possibility of immersion or splashing may occur.
- Never install the unit where it may be subject to:
 - Heat sources such as radiators, heat registers,
 - stoves or other products that produce heat.
 - Direct sunlight
 - Mechanical vibration or shock
 - Excess dust
 - Lack of ventilation, such as a closet or shelf
 - Irregular surface
- Avoid contact with moving parts. Do not insert fingers or objects through the grill when the fan is running.
- Make sure the ventilation grilles are not blocked (dust, dirt, objects...).
- Do not cover the grill or operate near curtains.
- Do not use the appliance near any flammable objects or products.
- Generally speaking, there must be at least 50 cm between the appliance and other objects (walls, curtains, sprays, etc.).
- Always disconnect the fan whenever you relocate it.
- The use of accessories not recommended or sold by the product's distributor may cause personal or material risks or injuries.
- Make sure that the fan is on a stable surface when operating to prevent overturning.
- Do not immerse in water.
- Do not force oscillation with your hand.

PRODUCT FEATURES

The package contains the following items, besides this manual and the product warranty. See pictures 01 on page 4.

Note: The picture is for reference only. The content may vary depending on the model.

1. Front grille.
2. Front mounting nut.
3. Blades.
4. Back mounting nut.
5. Rear grille.

6. Motor shaft.
7. Fan head (engine).
8. Oscillation tab.
9. Adjustable head angle Shaft.
10. Fan housing (control panel).
11. Fixing screw.
12. Inner tube.
13. Height Adjustment Collar.
14. Outer tube.
15. Base.
16. Screw type "L" (for base mounting).

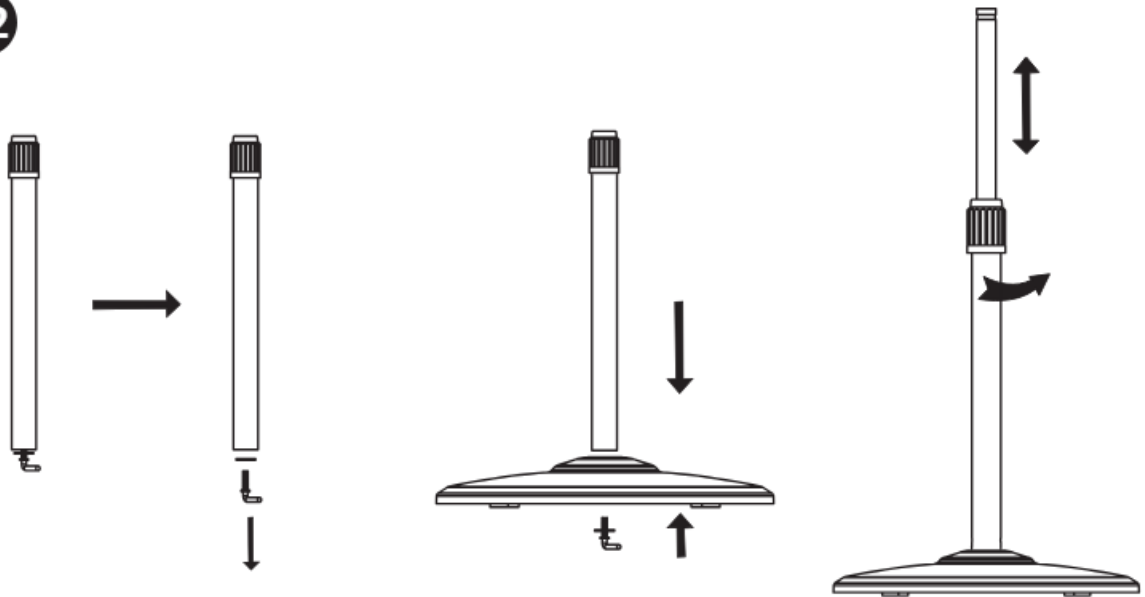
You can check the product features in table 01 on page 6.

ASSEMBLY AND INSTALLATION

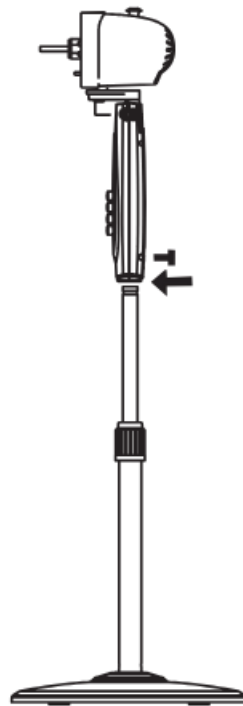
- Before unpacking the product, memorize the position of each accessory in case you need to repack it in the future.
- The fan is packed with the grilles removed. You must place the grilles before operating the fan.
- Warning: Never operate the fan without its base or other parts.
- Operate the fan only in an upright position; any other position could create a dangerous situation.
- Assemble the base and other parts of the appliance considering the following notes.
- Note: the images are for guidance only and should be used to support the installation.
- See pictures 02 and 03 on page 5.
- Unpack and take out every part of the fan.
- Unroll the Screw type "L" (16) from the inner tube. (12)
- Insert the outer tube (14) in the base and adjust the Screw type "L" (16)
- Unroll the height Adjustment Collar (13) and adjust the inner tube (12) until you get the desired height.
(Note: The inner tube is located inside the outer tube, Take it out gently until it is displaced)
- To include the fan head (7), place gently the fixing screw (11) in it.
- Insert the fan head (7) into the inner tube (12) and set by using the fixing screw (11).
- Unscrew the two plastic mounting nuts from the motor shaft, as they are fixed at the factory, the one on the blades (3) clockwise and the one on the rear grille (5) anti-clockwise.
- Use the fixing screw (4) to adjust the rear grille (5) to the fan head (7); get rid of the plastic lining of the motor shaft. Next, use the mounting nut (2) to fix the blades (3).
- Place the front grill (1) until it tightens to the rear grill (5).
- To attach, lock the small clips and it has to be around all the grill.
- **USING THE APPLIANCE**
- This device is easy to use and does not require much knowledge. However, we advise you to familiarize yourself with the instructions below.
- Control panel (See picture 04 on page 5)

17. Speed 3.
18. Speed 2
19. Speed 1
20. Off.

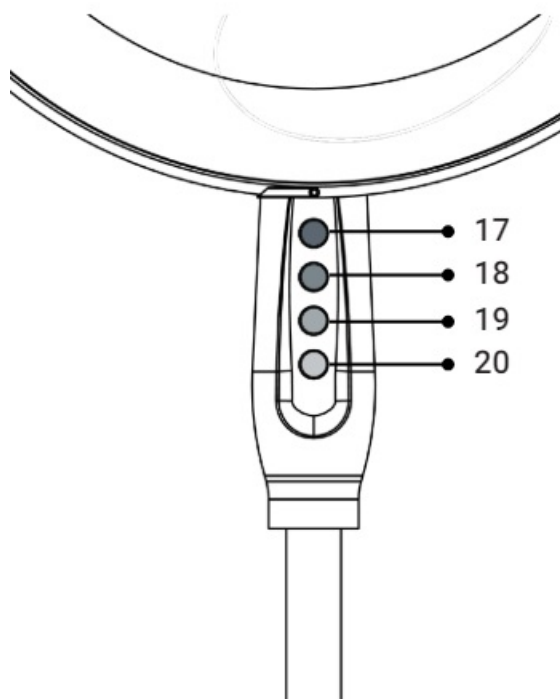
02



03



04



Select the 0 position or “OFF” of the Fan housing and connect to the power supply

- Once it's plugging in, select the speed you desire, from 1 (lower speed) to 3 (higher speed). Select the position 0 to stop the fan.
- This fan has a swing option. The button to active is located on the top of the engine cover. Please, press down the button (8) to activate the swing function, on the contrary, pull upwards to cancel the fan swing function.

CLEANING AND MAINTENANCE

To clean it, please follow the instructions below:

- Turn the fan off and wait until it has stopped completely.
- Disconnect it from the power supply.
- Be careful to prevent any liquid from getting inside the appliance.
- Use only a soft damp cloth.
- Do not allow water at a high temperature in contact with the plastic parts.
- Maintain the air circulation on the back of the control panel free of dust. Use a Hoover to remove it, when it could be possible.
- Do not use abrasive cleaners. You can use a neutral detergent.
- When you have finished cleaning it, assemble it again and store it in a dry place.
- If you are not going to use the fan for some time, it is recommended to remove the batteries from the remote control and store it in a clean and dry place.

Follow these indications in order to optimize the maintenance:

It is recommended to clean the water tank at least once a week. If the water tank is scaling, use a soft cloth with

cleaning solvent to clean it and rinse with clean water.\

To clean the humidifier externally, use a soft cloth immersed in water at 40°. Do not use sharp or hard objects to scratch the vibrating piezoelectric ceramic part for transduction. It can only be cleaned with a soft, damp cloth.

- Do not use a cloth with a chemical solvent, gasoline, kerosene, or polishing powder to clean the surface.
- Do not use random detergent for cleaning. It is best to use clean water.
- Keep water away from the body of the machine to prevent moisture from internal electrical components that can cause malfunction.
- Readjust the visible screws from time to time to ensure a good performance of the appliance.

TROUBLESHOOTING


- Occasionally you can solve yourself some failures in your appliance. Check the Problem-Solution chart included in this manual. See table 02 on page 7.
- Otherwise, please contact our Customer service.
- If you notice any failure you cannot fix yourself and it's preventing you from using the appliance, disconnect it from the power supply.
- Any repairing intervention or replacement of electrical cables must be carried out by a skilled and competent technician. Otherwise it could be very dangerous.

REPAIR AND SPARE PARTS SERVICE


All original spare parts relevant for the correct operation of the appliance according to the regulation concerning sustainable design will be available through our After Sales Service for at least 10 years from the date the appliance was introduced in the market within the . European Economic Area.

ENVIRONMENTAL INFORMATION



-  This appliance is labelled in compliance with European directive 2012/19/EU for Waste Electrical and Electronic Equipment (WEEE). By ensuring that this appliance is disposed of correctly, you will help prevent any possible damage to the environment and to human health, which might otherwise be caused if it were disposed of in the wrong way.
- The symbol on the product indicates that it may not be treated as normal household waste. It should be taken to a collection point for the recycling of electrical and electronic goods.
- This appliance requires specialist waste disposal. For further information regarding the treatment, recover and recycling of this product please contact your local council, your household waste disposal service, or the shop where you purchased it.
- For more detailed information about treatment, recovery and recycling of this product, please contact your local city office, your household waste disposal service or the shop where you purchased the product.



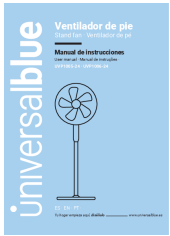
-  The packaging materials are recyclable product. These materials can be deposited in public collection point for recycling.



- For devices containing batteries or rechargeable batteries, these parts must be removed and disposed of in clearly marked recycling bins.
- Please go to the nearest recycling bin in your location or common store. Please comply with your legal obligations and contribute protecting our environment.

WARRANTY

- UniversalBlue will not bear any extra cost derived from an external installation service requested by the buyer. We inform you that, during the warranty period, for those products supplied with parts not assembled the Technical Service can decide to carry out the repair by replacing these parts not assembled.
 - This appliance has a warranty of 3 years from the date of purchase, considering the following notes:
 - The guarantee is valid only on presentation of the product's purchase invoice.
 - Damage caused during transport, negligence or misuse, incorrect assembly or installation, as well as external influences such as: atmospheric or electrical rays, flooding, humidity, etc. are not covered by the warranty.
 - Damage caused as a result of improper installation, power connection (electricity, water, gas), drainage and disposal is also not covered by the warranty.
 - Aesthetic damage (such as scratches, chips, etc.) arising from use are not covered by the warranty.
 - This warranty ends when it is discovered that repairs, alterations or interventions have been made by anyone not authorised by Universal Blue.
 - The warranty ends when the product has not been used for domestic use only.
 - The warranty does not cover deficiencies resulting from improper use and periodic maintenance of the product as specified in the instruction manual.
 - Accessories or consumable components are not covered by the warranty.
 - Rubber components are excluded from the warranty.
 - The product is not covered by the warranty if it lacks the corresponding identification plate. The user must inform the technical service of the data included on the identification plate when required.
 - The warranty not cover if you repair your product with not original spare parts. To make use of the guarantee go to the store where you purchased this product or contact us by:\
 - By e-mail: sat@universalblue.es, please, attach the invoice, add your contact details and explain briefly what the issue is.
 - By phone (0034) 968 893691.
 - In the following address: UNIVERSAL FOR ENGINEERING INDUSTRIES SPAIN, SL C/ Decenio N1, P.I. Media Legua. Las Torres de Cotillas (Murcia). 30565
 - The details of the warranty are detailed in a supplementary dossier which you will find with this manual. Please read the warranty carefully, as all points are more clearly specified there. Please note that the warranty information that is valid is the one in the warranty booklet.
-



[universalblue UVP1005-24 Standing Fan](#) [pdf] User Manual
UVP1005-24, UVP1005-24 Standing Fan, Standing Fan, Fan

References

- [User Manual](#)

Manuals+, Privacy Policy

This website is an independent publication and is neither affiliated with nor endorsed by any of the trademark owners. The "Bluetooth®" word mark and logos are registered trademarks owned by Bluetooth SIG, Inc. The "Wi-Fi®" word mark and logos are registered trademarks owned by the Wi-Fi Alliance. Any use of these marks on this website does not imply any affiliation with or endorsement.