

**UNIVERSAL**

**F9-C Carplay  
Smart  
Instrument**



# Universal F9-C Carplay Smart Instrument Screen Instruction Manual

[Home](#) » [Universal](#) » Universal F9-C Carplay Smart Instrument Screen Instruction Manual 

## Contents

- 1 Universal F9-C Carplay Smart Instrument Screen
- 2 Product Information
- 3 Product Usage Instructions
- 4 Frequently Asked Questions
- 5 Parts List
- 6 product highlights
- 7 Features
- 8 Product Description
- 9 function introduction
- 10 Carplay/Auto usage instructions
- 11 Effect display picture
- 12 Installation instructions
- 13 Screen Instructions
- 14 Front camera installation instructions (optional)
- 15 FAQ Troubleshooting Guide
- 16 Documents / Resources
  - 16.1 References

**UNIVERSAL**

Universal F9-C Carplay Smart Instrument Screen



## Product Information

### Specifications

- Screen: 8.9-inch high-definition 2.5D laminated screen
- Operating System: High performance OS
- Features: Autopilot display, 3 UI theme styles, OTA upgrade, Carplay/Android Auto support
- Additional: Forward blind zone display, 5 car model colors available

## Product Usage Instructions

### Installation

#### Tools Required:

- Plastic trim tool
- Small Phillips screwdriver

#### Optional tools:

- T20 screwdriver
- Threading tape
- 10mm socket

**Precautions:** Ensure power is turned off before installation. Read instructions carefully for faster installation.

### Product Highlights

- Synchronously displays original vehicle driving information
- Universal F9-C Carplay smart instrument screen available with or without camera

- 3 UI theme styles for customization

## Function Introduction

- **Charging Tips:** Screen prompts charging status when the charger is connected
- **Door Status:** All doors must be closed for normal operation interface
- **Auto-assisted Driving Mode Reminder:** Prompts to hold steering wheel after auto-assisted driving activation

## Carplay/Auto Usage Instructions

### Connection Interface:

1. After entering the interface, connect your mobile phone to Bluetooth: Carkit-9DF3 with pairing code 0000
2. Connection successful

## Frequently Asked Questions

- **Q: How do I know if my Universal F9-C Carplay has a camera?**
  - A: The F9-C Carplay model includes a camera, while the F9 Carplay does not have a camera.
- **Q: What tools are required for installation?**
  - A: Plastic trim tool a small Phillips screwdriver are required. Optional tools include T20 screwdriver, threading tape, and 10mm socket.

## Parts List

### parts list diagram



|   |                   |   |                            |
|---|-------------------|---|----------------------------|
|   |                   |   |                            |
| ① | Screen            | ⑤ | Screen main wiring harness |
| ② | Plastic trim tool | ⑥ | Stickers in place          |
| ③ | Camera (optional) | ⑦ | USB flash drive            |
| ④ | Fixed bracket     |   |                            |

### 1. Tools required for installation

Plastic trim tool; Small Phillips screwdriver ; Optional tools required ( T20 screwdriver; threading tape; 10mm socket)

### 2. Installation precautions:

Please ensure that the power is turned off to prevent malfunctions.

Tip : For faster installation, be sure to read these instructions carefully.

### product highlights



- 8.9-inch high-definition 2.5D laminated screen
- Synchronously display original vehicle driving information
- High-performance operating system
- Original vehicle control
- Autopilot display
- The forward blind zone display
- 3 UI theme styles
- 5 car model colors
- OTA upgrade
- Carplay/Android Auto

**Universal F9-C Carplay smart instrument screen (with and without camera)**

## Features

1. Installation: Special car-specific, non-destructive installation, does not affect the function of the original car
2. Experience: Linux high-performance operating system , 8.9- inch high-definition 2.5D laminated screen , 1920\*720P , windproof design
3. Functions: Compatible with synchronized original car driving information display, compatible with synchronized original car screen partial data display, 3 creative UI theme style displays, adaptive day and night mode, supports original car side control, 5 car model colors, OTA one -click upgrade , P laid mode, front-view camera, charging reminder, wireless Carplay /Android Auto

## Product Description

1. Specially designed for special vehicles, non-destructive installation without damaging the original vehicle wiring harness and functions.
2. Linux high-performance operating system, integrated with the car to achieve vehicle-machine integration , 8.9 – inch high-definition 2.5D laminated screen IPS true color full viewing angle, resolution 1920\*720P high-definition image quality, truly wind-free design experience
3. Compatible with synchronized original vehicle driving information display: (time, left and right turn signals, rear fog lights, side lights, low beam, high beam, automatic braking, seat belts, outside temperature, speed limit reminder, battery usage, Vehicle distance, speed / door opening information, gear position, cruising range, total mileage, tire pressure, automatic assisted driving); compatible with synchronized partial data display on the original car screen: (same type of icons for automatic assisted driving) 3 creative UI theme styles display ( Simple, classic, sporty), adaptive day and night mode (brightness adjustment), automatically changes in sync with the original car. Compatible with the original car button control screen; 5 body colors ( white, red, black, blue, gray); supports OTA oneclick upgrade (universal WIFI- mobile phone Bluetooth), Plaid mode , long press the right button of the original car steering wheel to enter the front view Camera interface, charging prompt (when opening the charger cover, it will prompt: not charging or charging), wireless Carplay/Android Auto : the new 5G network ensures stable connection, no lag and fast transmission, and the connection between the Carplay module and the mobile phone is stable and smooth

Note: Priority will be displayed when the door is not closed, and the vehicle speed will be displayed after the door is closed! Model distinction: F9-C Carplay has a camera, F9 Carplay does not have a camera

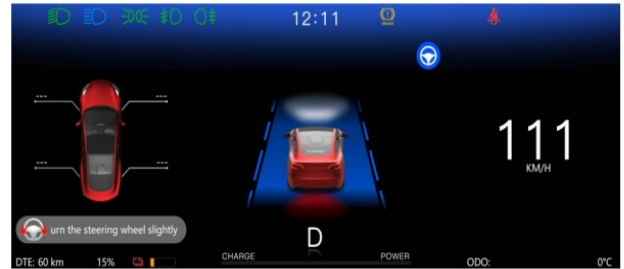
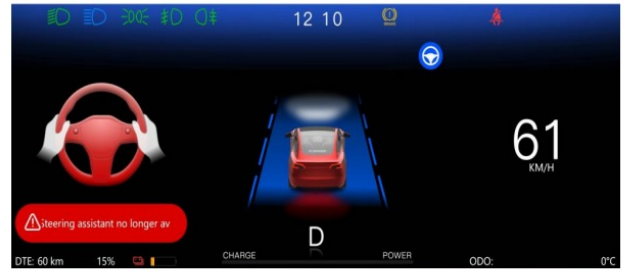
## function introduction



**Charging tips**  
When you open the charger cover, the screen will automatically pop up and it will not charge. When you plug in the charger and start charging, it will prompt that it is charging. After it is fully charged, it will prompt that charging is complete.



**Door status**  
Open the car doors (4 doors), front cover, and trunk, and there will be corresponding status prompts.  
**Note:** All doors need to be closed to enter the normal operation interface.



**Auto-assisted driving mode reminder**  
One minute after activating the automatic assisted driving mode, the prompt "Please turn the steering wheel lightly" will be entered, or if the automatic driving time is long, the reminder "Automatic assisted steering cannot be activated again for this driving, please hold the steering wheel and drive manually" will be displayed. The upper part of the screen will flash along with the original car.



**The lane rotates with the vehicle**  
The lane will rotate as the car turns the steering wheel (left, right, straight)



**Carplay version shortcut function**  
1. Click the Carplay icon to enter Carplay in P gear.  
2. Click here to enter Android Auto connection  
3. Click here to enter the setting interface  
4. Volume addition and subtraction  
5. Whether to automatically and quickly enter the Carplay switch

**Android version shortcut function**  
1. Click the Carplay icon to enter Carplay in P gear.  
2. Click here to enter Android Auto connection  
3. Click here to enter the Android entertainment function connection  
4. Volume addition and subtraction  
5. Whether to automatically and quickly enter the Carplay switch  
6. Click here to enter the setting interface

## Carplay/Auto usage instructions

### Carplay/Auto



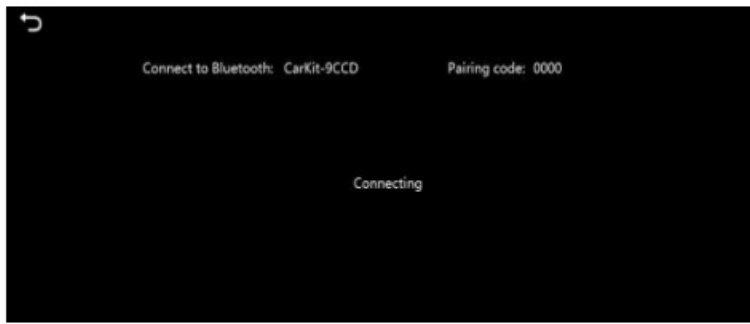
### Carplay/Android Auto

1. When in Carplay, press the right scroll wheel to the right to enter the Carplay connection interface.
2. Turn on Bluetooth in the phone settings and find the corresponding Bluetooth name on the machine, for example CarKit- \*\*\*\*
3. Click the Bluetooth name of the machine on your phone to start pairing.
4. When connecting, the dialog box that pops up on the phone (use Carplay with " Carplay" ) selects to use Carplay.
5. The connection is successful (full screen or split screen can be selected on the settings page)
6. Comes with a built-in speaker, which can output sound from the speaker when not connected to the car.
7. In P mode, touch the front wheel to enter CARPLAY and the rear wheel to enter Android AURO.

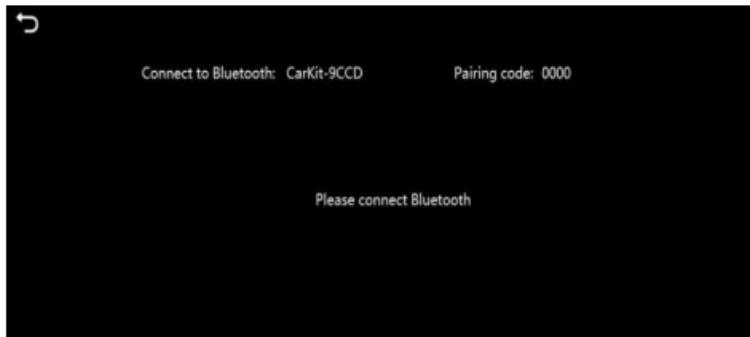
Note: After entering the interface, please use your mobile phone to connect to

- Bluetooth: Carkit-9DF3
- Pairing code: 0000

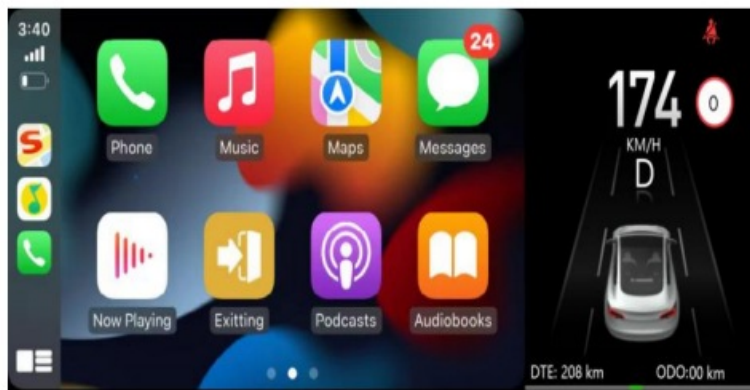




Connection  
interface



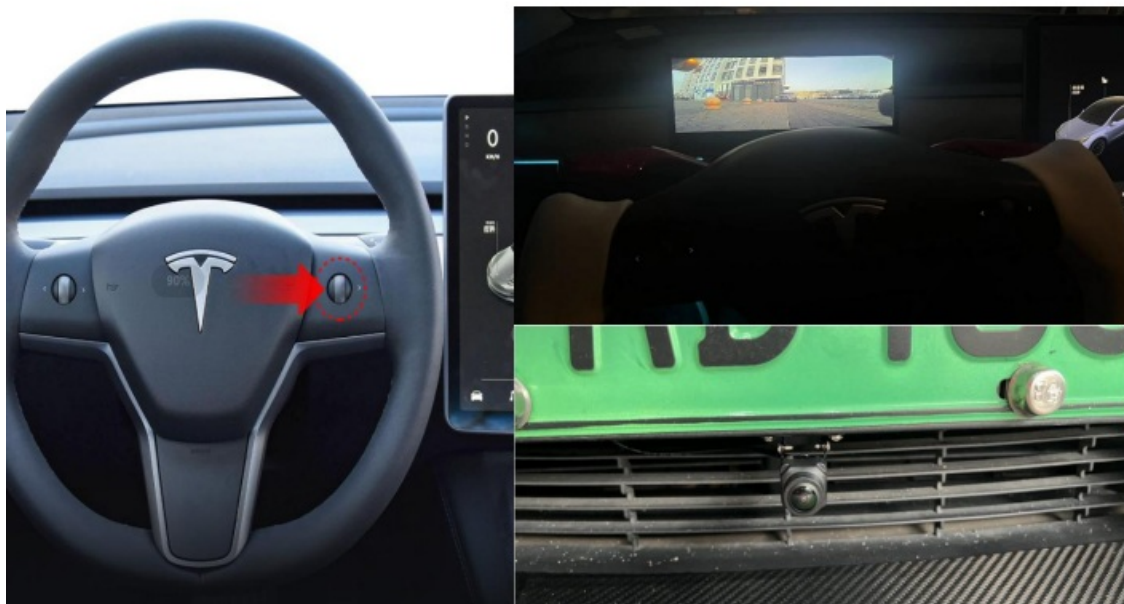
Connecting



Connection  
succeeded

Note: The factory default name of the Bluetooth device is CarKit-xxxx . Different devices may have different Bluetooth names.

#### Front view camera entry instructions (optional)

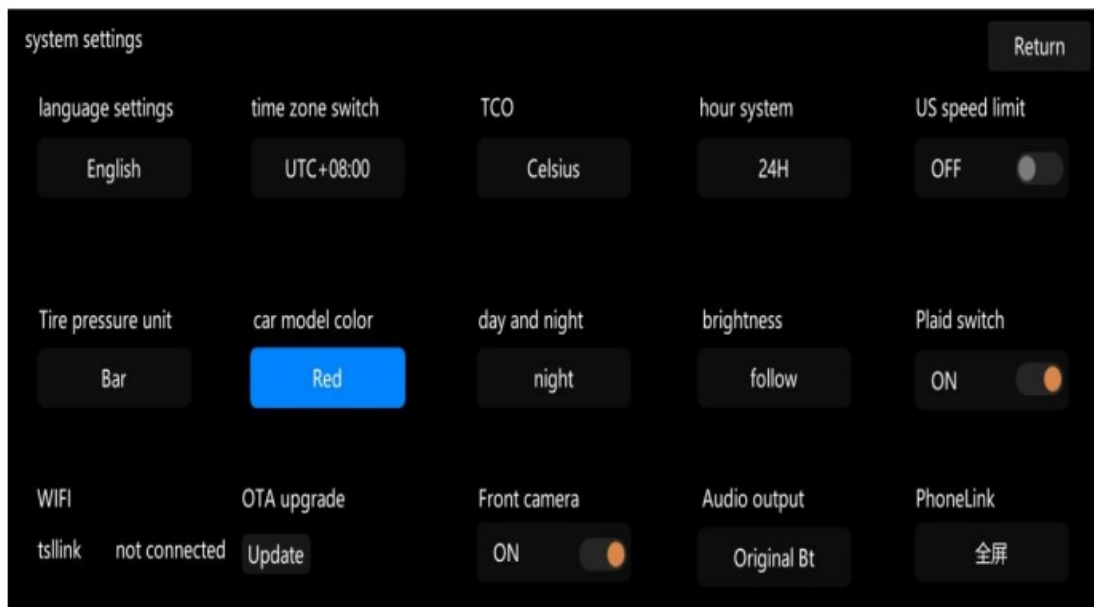


#### Setting method



1. When starting forward in D gear, it will automatically enter forward view when the speed is below 20 mph, and will automatically exit when it exceeds 20 mph (press the right wheel to push left to exit manually)
2. Press and hold the right scroll wheel downward for 3 seconds to manually enter the front view.
3. Right scroll wheel: push left to exit, push right to confirm selection
4. Left scroll wheel: Push left and press for 3 seconds to restart the machine.

Note: The trigger condition for forward view must be that the forward view switch on the settings page is turned on.



## Set interface

Language switching, time zone switching, temperature switching, hour format, US speed limit, tire pressure unit, car model color, day and night mode, brightness adjustment, Piaid switch, front camera, audio output, full screen switching, OTA upgrade

1. Note: 1. Press the right scroll wheel to the right or long press to the left to enter the setting interface.
2. OTA upgrade, long press the right scroll wheel to the right, the version information will appear

## Effect display picture



## Innovative design

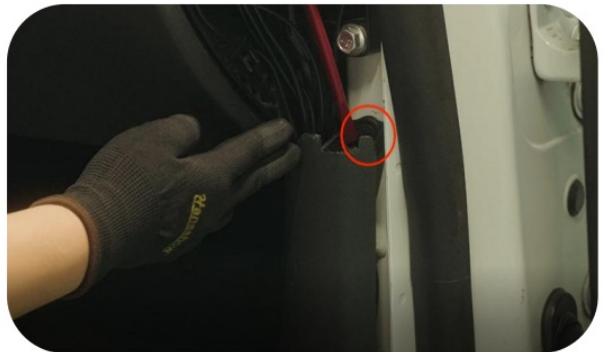
The product design style is simple, the screen is large and does not block the wind , and it adopts touch operation. It is a high-end Tesla instrument that is truly wind-proof and redefines Tesla's high-end instrument screen

## Installation instructions

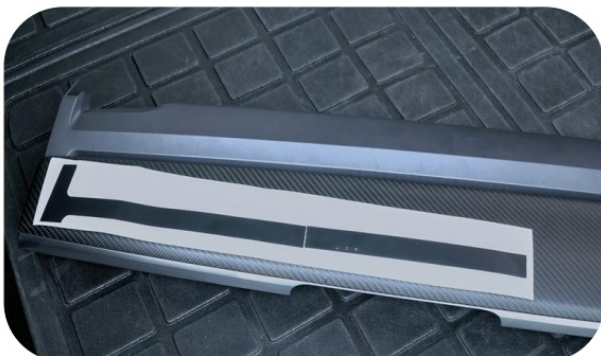
1. Remove the triangular panel on the left side (The same goes for the right side)
2. Remove the instrument middle trim panel



3. Remove the passenger rectangular trim panel
4. Release the clip on the passenger door trim panel and remove the door sill trim panel (The same applies to 8 the left and right)



5. Take out the positioning sticker
6. Place the sticker correctly on the driver's side front dashboard



7. The three points on the sticker correspond to the three holes on the decorative plate.
8. Align the wiring harness plugs on the screen and pass them through in sequence.



9. The screen is stuck in, and the back of the trim panel looks like this



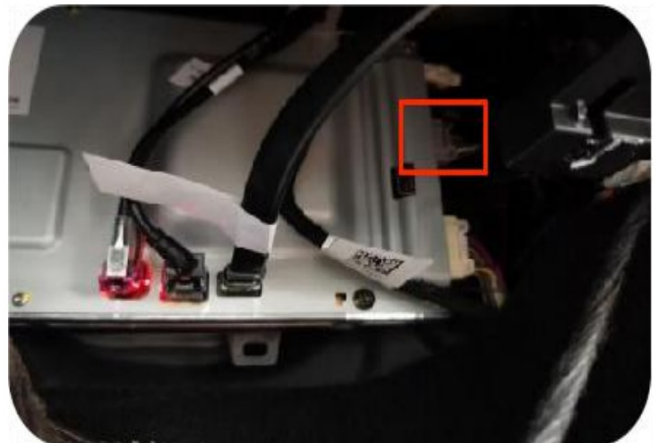
10. Take out the fixing bracket and tighten the screws one by one



## Screen Instructions

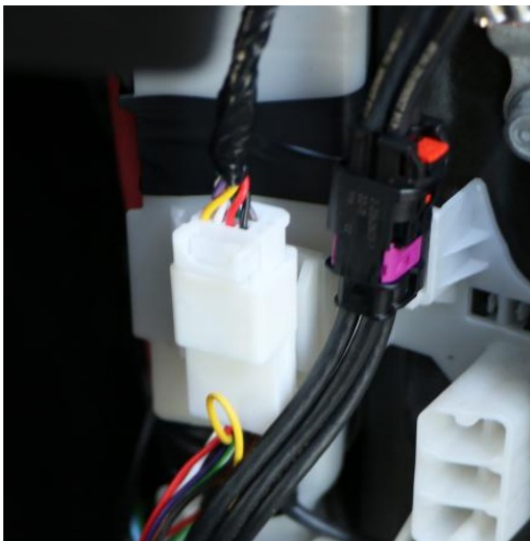
### Intel version

1. Use T20 to unscrew the fixing screws and buckles of the passenger floor.
2. Unplug the second gray plug on the computer board and plug it in



### AMD version

1. Connect the plug to the white plug under the A-pillar of the right front seat
2. Connect the plug to the blue plug under the A-pillar of the right seat



- 11. Plug in the corresponding plug according to your car version, and then run the wiring harness along the

edge to the front of the steering wheel.

- 12. Each plug comes with a corresponding label. Be sure to check it first. If it's correct, then match color to color and plug in the plugs accordingly. If you find something wrong, please contact us (The yellow wiring harness is optional for front view)



- 13. After plugging in the plug, test whether the product is normal.
- 14. Restore it (The screen air vent must be inserted into the original car air outlet)



### Front camera installation instructions (optional)

1. Remove the air intake trim panel
2. Use a No. 10 socket to unscrew the four fixing screws

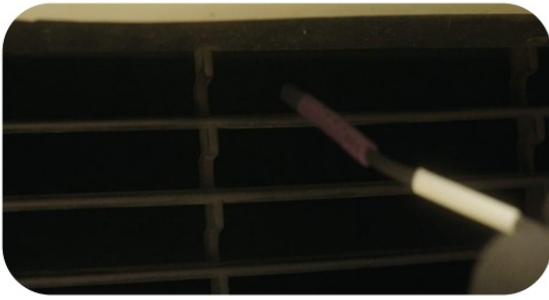


3. Remove the clip on the front trunk
4. Unplug the front trunk button and take out the front trunk

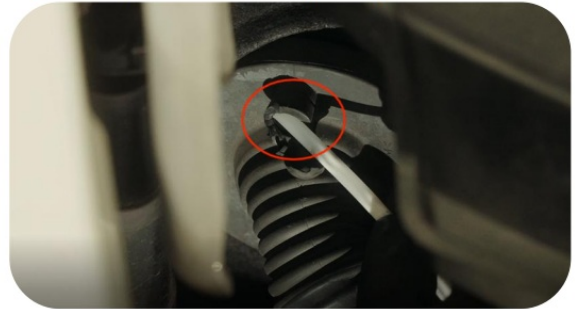
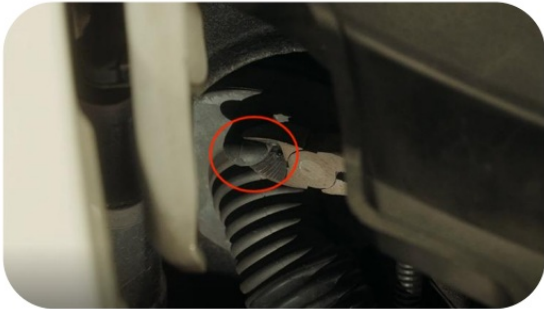


5. Pass the camera harness through the lower grille into the cabin.
6. Use double-sided tape to attach the camera to the center of the license plate, align the position with the fixing screw (Clean it before pasting)

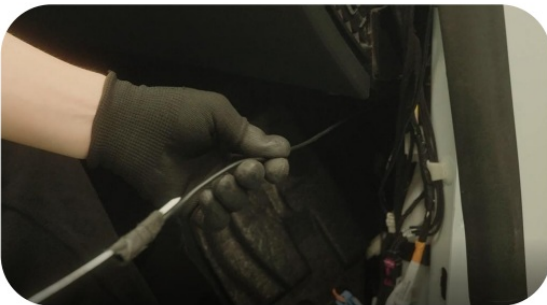




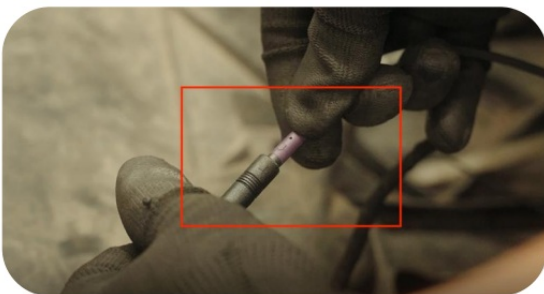
7. Cut off the raised position of the rubber plug as shown in the picture (The location is in the upper right corner 15 of the passenger trunk)
8. Thread the threading tape from the cut position (Don't break the rubber plug, otherwise it will be difficult to snap it back in)



9. Pull out the wiring strap from the passenger side (Tie the wiring harness in the cabin)
10. Walk along the main wiring harness to the front of the steering wheel (the wiring harness can be fixed with tape to prevent abnormal noise)



11. Plug the extension cord into the camera plug (Fix the excess wire harness)
12. Connect the other end to the screen plug, the yellow wiring harness is for the front view plug (Secure any excess wiring)




### Front camera installation instructions (optional)

1. Plug all the plugs in, turn on the product and test whether there is any problem with the front view, then restore and install the vehicle

### FAQ Troubleshooting Guide

| Fault                                                             | Reason                                                                        | Solution                                                                                                                                                                                           |
|-------------------------------------------------------------------|-------------------------------------------------------------------------------|----------------------------------------------------------------------------------------------------------------------------------------------------------------------------------------------------|
| Black screen (The screen does not light up after installation)    | Other factors cause the microprocessor to work abnormally                     | Restart key                                                                                                                                                                                        |
|                                                                   | After the host plug was unplugged, it was not plugged back within 5 minutes.  | Connect the wiring harness, lock the car for 2 hours, keep the mobile phone and remote control key more than 20 meters away from the car, and check after 2 hours to see if the screen can be lit. |
|                                                                   | The host or screen plug is not tightly plugged in                             | Reconnect the console plug                                                                                                                                                                         |
| Start without display                                             | Background data error                                                         | Reconnect the console plug                                                                                                                                                                         |
| The original car information is not synchronized or not displayed | The power line protocol line is blocked                                       | Re-plug the cable and check the cable interface                                                                                                                                                    |
| How to switch between day and night mode                          | Push the right scroll wheel to the right to enter the settings interface      | Set to manual or automatic mode                                                                                                                                                                    |
| Dimming                                                           | Push the right scroll wheel to the right to enter the settings interface      | Set to desired brightness                                                                                                                                                                          |
| How to switch body color?                                         | Push the right scroll wheel to the right to enter the settings interface      | Set desired color                                                                                                                                                                                  |
| How to switch UI interface                                        | Press the right scroll wheel to the right to enter the UI selection interface | Set up the required UI                                                                                                                                                                             |
| Why can't I enter the front view?                                 | Set the front-view camera to turn off                                         | Open the front camera on the settings page                                                                                                                                                         |

## Documents / Resources

|                                                                                     |                                                                                                                                                                                                                                                                               |
|-------------------------------------------------------------------------------------|-------------------------------------------------------------------------------------------------------------------------------------------------------------------------------------------------------------------------------------------------------------------------------|
|  | <a href="#">Universal Universal F9-C Carplay Smart Instrument Screen</a> [pdf] Instruction Manual DE2OTM, Universal F9-C, Universal F9-C Carplay Smart Instrument Screen, Universal F9-C, Carplay Smart Instrument Screen, Smart Instrument Screen, Instrument Screen, Screen |
|-------------------------------------------------------------------------------------|-------------------------------------------------------------------------------------------------------------------------------------------------------------------------------------------------------------------------------------------------------------------------------|

## References

- [User Manual](#)

[Manuals+](#). [Privacy Policy](#)

This website is an independent publication and is neither affiliated with nor endorsed by any of the trademark owners. The "Bluetooth®" word mark and logos are registered trademarks owned by Bluetooth SIG, Inc. The "Wi-Fi®" word mark and logos are registered trademarks owned by the Wi-Fi Alliance. Any use of these marks on this website does not imply any affiliation with or endorsement.