



Universal Remote Control Inc MX-880 Handheld Wand-Style Remote Control Instruction Manual

[Home](#) » [Universal Remote Control Inc](#) » Universal Remote Control Inc MX-880 Handheld Wand-Style Remote Control Instruction Manual 

Contents

1 Operating Your System With the MX-880

1.1 Congratulations!

1.1.1 User Configurable Screen and Button Lighting

1.1.2 Integrated Sound Signaling

1.2 Custom Labeled Buttons

1.3 Programmable only by a URC Certified Professional

1.4 Optional RF “No Rules” Operation

1.5 Installing and Charging the Battery

1.6 Selecting a New “Activity”

1.7 Using the MX-880 to Control an “Activity”

1.8 Accessing the MX-880’s Setup Menus

1.9 Selecting from the Setup Menus

1.10 Setting the Color Screen

1.10.1 Setting Brightness

1.10.2 Setting the Screen Pick Up Sensor

1.10.3 Setting the Screen Auto Turn Off

1.11 Setting the Button Lighting

1.11.1 Setting Button Lighting Automatic On

1.11.2 Setting the Button Lighting Auto Turn Off

1.12 System Menu

1.12.1 Power Remaining and Battery Warning Settings

1.12.2 System Info

1.13 Setting the Button Beep Volume

1.14 Date and Time Menus

1.14.1 Setting Time

1.14.2 Setting Date

1.14.3 Setting Display for Time or Date

1.15 Erasing and Resetting

1.16 Specifications

1.17 Contact Us

1.18 Limited Warranty Statement

1.18.1 1. Limited Warranty and Disclaimers

1.18.2 2. URC’S Limitations of Liability

1.19 End User Agreement

1.20 Your Listen Devices

2 Documents / Resources

2.1 References

3 Related Posts

Operating Your System With the MX-880



**COMPLETETM
CONTROL**



This remote control was
Custom Programmed for you by:

For questions about your Custom Programming call:

Custom Programming of a complex home theater and/or a multi-room system is one of the most challenging tasks within an audio/video installation. It involves an intimate knowledge of how the components interact and exact details on the proper sequences of control.

Only a Complete Control dealer has the requisite experience and training to quickly and effectively customize a remote control for true automated operation.

Congratulations on your choice!

MX-880 Owners Manual © 2008-2014 Universal Remote Control, Inc. Front Cover Photo courtesy of Robert Ridenour of Connected Technologies, www.connected-technologies.com

The information in this owner's manual is copyright protected. No part of this manual may be copied or reproduced in any form without prior written consent from Universal Remote Control, Inc.

UNIVERSAL REMOTE CONTROL, INC. SHALL NOT BE LIABLE FOR OPERATIONAL, TECHNICAL OR EDITORIAL ERRORS/OMISSIONS MADE IN THIS MANUAL.

The information in this owner's manual may be subject to change without prior notice.

Complete Control is a registered trademark of Universal Remote Control, Inc.
Entertainment Made Simple is a trademark of Universal Remote Control, Inc.

All other brand or product names are trademarks or registered trademarks of their respective companies or organizations.

MX-880 OWNERS MANUAL

Congratulations!

You've purchased a unique synthesis of hardware and software engineering, the Complete Control MX-880. The MX-880 achieves a magnificent combination of power and flexibility, simplifying and automating operation of even the most complex system.

User Configurable Screen and Button Lighting

A built in pick up sensor can be set to light the screen and/or the buttons automatically. Additionally, a dedicated LIGHT button enables the user to backlight the buttons if the pick up sensor is turned off.

Integrated Sound Signaling

The MX-880 incorporates a small speaker for beeps. Anytime you press a button, the MX-880 signals that it has understood your command with a beep sound.

Custom Labeled Buttons

When you pick up the MX-880, it automatically lights up the color LCD screen which labels the six buttons to either

side of the screen. These button labels change based on what you are watching or listening to. Thus, if you have selected Watch TV, you will see a list of buttons that are useful to that activity, while if you select Watch DVD, the buttons will control the DVD.



1. LIGHT Button

Press the Light button on the side of the MX-880 to backlight all of the buttons. Of course, you could opt to set the buttons to light automatically via the pick up sensor.

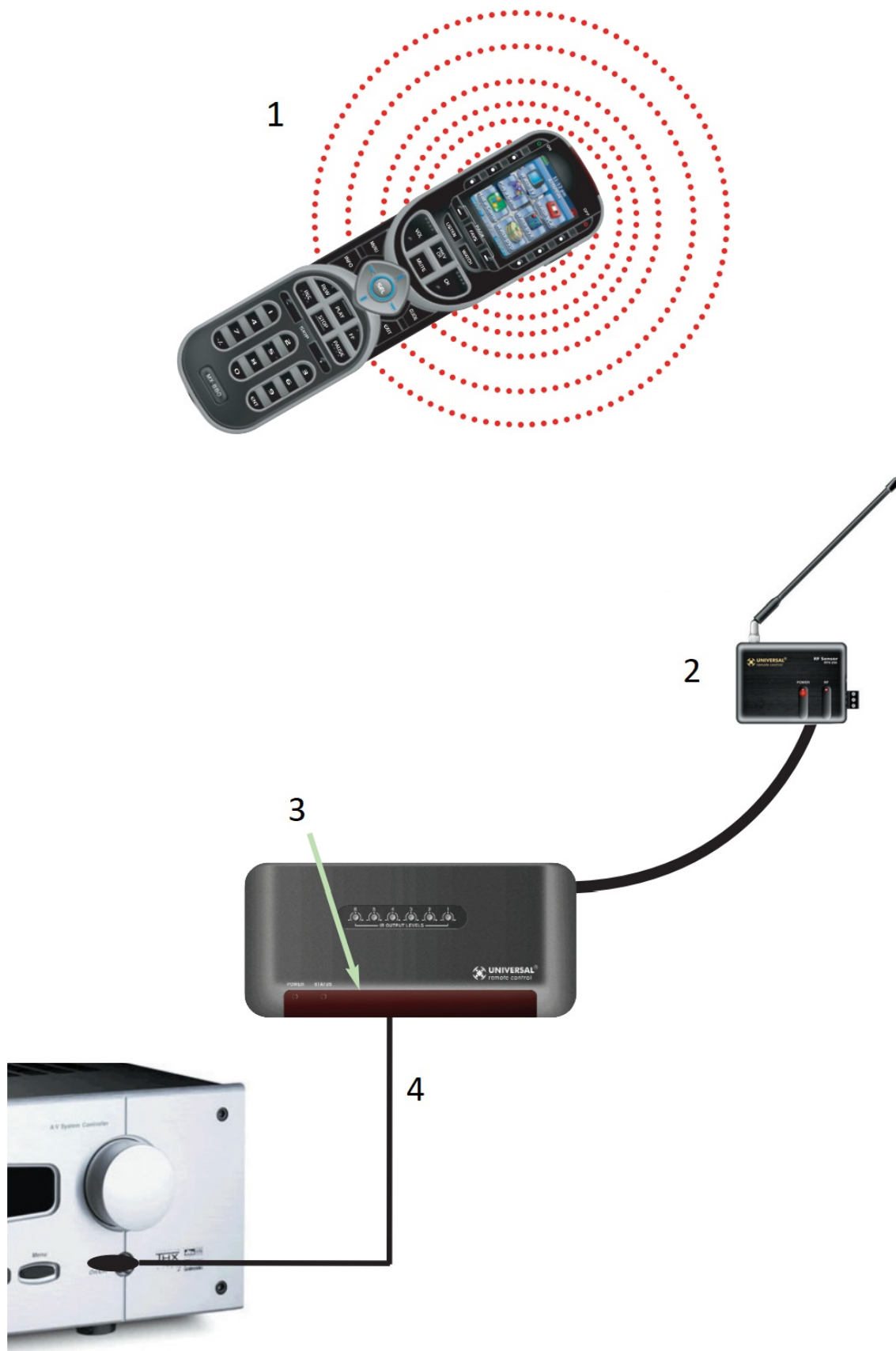
Programmable only by a URC Certified Professional

To fully automate your audio/video system, the programmer must have detailed knowledge of each component as well as how the system is connected and operated. Only a trained and certified professional audio/video installer can install a MX-880 remote control in a timely and efficient manner.

Optional RF “No Rules” Operation

In combination with a Complete Control RF Base Station, the MX-880 can control your system without being in line-of-sight of the equipment.

To preserve good operation always utilize a Narrow Band RF Base Station with RF Addressing. RF Addressing gives you the ability to control equipment locations throughout your home, even if they are concealed in other rooms or are behind closed doors.



1. The MX-880 sends radio waves in every direction, so you don't have to point the remote anymore!
2. The RFX-250 RF Sensor can be freely positioned for optimal reception.
3. The MRF-350's built-in Front Blaster sends commands to components in the same cabinet space as the MRF-350.
4. Self-adhesive "Flashers" affix to the Infrared sensors on the front panels of your components. The Flashers relay commands to components out of sight of the MRF-350's Front Blaster. The flashers plug in to the MRF-350's rear flasher line outputs via their 10 foot cables. Uniquely, the MRF-350 can also connect to components

with rear panel IR Inputs via its adjustable IR Line Outputs.

Installing and Charging the Battery

1. Open the battery cover by pressing on the release clip and removing the cover.



Note that the three contacts on the battery must connect to the three spring-loaded contacts in the MX880. Angle the battery into the battery compartment, contacts first, then gently fit the rear of the battery into the compartment as well. Replace the battery cover by inserting the hinged end in first, then snapping the cover back into place.



You can charge the Lithium Ion battery by simply plugging the included charger into the base of the remote as shown here.

The MX-880 can be used while charging.



Selecting a New "Activity"

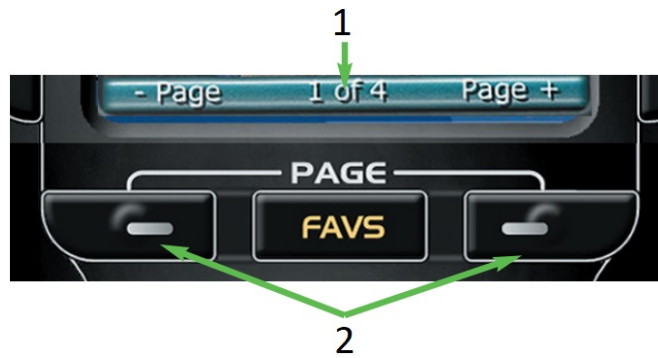
The MX-880's WATCH and LISTEN buttons display the activities you can control with your MX-880. When you want to watch something else (a DVD movie, a videotape or an HDTV broadcast), simply press the WATCH button and select the new activity. When you want to listen to the radio or to a CD, touch the LISTEN button and select what you would like to listen to.

Your installer will have programmed the button you pressed to totally configure your system to watch or listen to whatever you selected. Now, the screen will change, and all of the LCD buttons will be reconfigured to give you full control of your system while watching or listening to your selection!



1. When you press the LISTEN button, you can see the most frequently used activities you have for listening in your system.

2. When you press the WATCH button, you can see the most frequently used activities you have for watching the sources in your system.



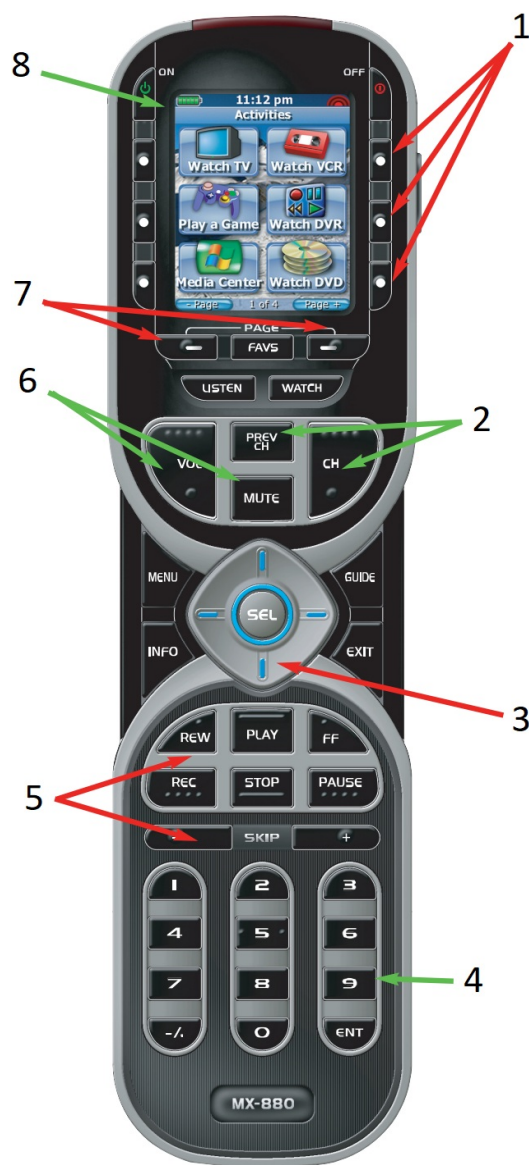
1. PAGE DISPLAY

At the bottom of the LCD screen, the page display informs you if there are other pages of buttons available.

2. Press either of the PAGE buttons to see any other available choices.

Using the MX-880 to Control an “Activity”

Once you’ve selected a new activity, the MX-880 displays the title of the activity at the top of the screen. Below the title, the LCD displays the customized names of any special features you need for the activity. All the hard buttons of the MX-880 have now changed to functions optimized for this activity.



1. The LCD button labels describe special features for this activity.
2. The Channel and Previous Channel buttons will change channels when you have selected an activity like Watch CABLETV or Watch SAT TV.
3. The 4 way cursor buttons enable you to navigate on screen guides and menus with ease.
4. The Number keypad will enter numbers for the activity you've selected. Thus, for watching Cable TV, you use the number keypad to enter channel numbers, while when listening to CD, the number keypad enters track numbers.
5. The transport buttons (Play, Stop, Skip-, Skip+, FF, REW and Pause) operate when the selected activity requires them (for example, if you watch CABLETV with a TiVo type of DVR, these buttons will control the built-in DVR, while if you are watching a DVD, these buttons will control the DVD player).
6. The Volume and Mute buttons always control the sound regardless of what screen is displayed.
7. Press either of the PAGE buttons to see any other available choices.
8. The Title displays what activity you can control.

Accessing the MX-880's Setup Menus

The MX-880 has internal setup menus that enable you to change the settings that control your color screen, the

button lighting, battery warnings and the clock. To access these settings, you must press and hold two buttons at the same time as shown here:



1. At the same time, press and hold both the WATCH button and the ENTER button. When the SETUP screen appears, you can release the two buttons.

Selecting from the Setup Menus

There are two pages of settings on the Setup Menu. Use the page buttons to view them. To select, simply press the corresponding button.



1. Select the setting you'd like to adjust by pressing the button beside the screen.
2. Use the Page button to see other pages.
3. Exit the Setup Menus by pressing the WATCH or LISTEN button, or simply waiting (the setup menus time out in 30 seconds).

Setting the Color Screen

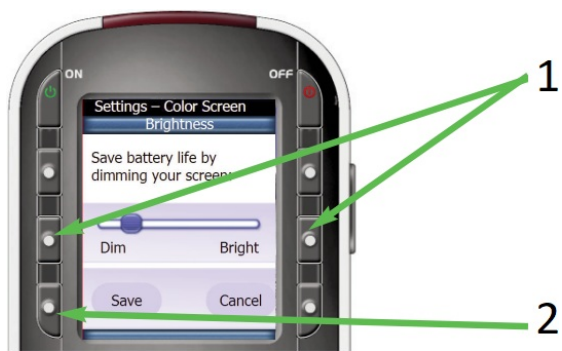
Although usage of the color screen will affect how frequently you have to charge the battery, the screen does not drain the battery as quickly as the button lighting does.



1. Adjust the brightness of the screen to taste. In most lighting conditions, 50% gives good results.
2. The Pick Up sensor senses motion, so it will keep the screen on (and drain your battery charge) as long as you are holding it in your hand. If you turn off the Pick Up sensor you will extend battery life (the screen will still light up when you press any button).
3. Adjust how long the screen stays lit after you put it down or stop using it here.

Setting Brightness

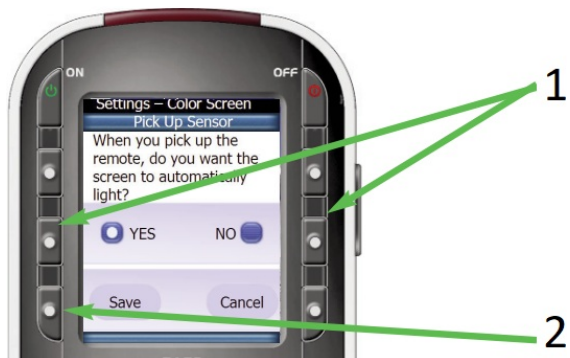
Use the buttons next to DIM and BRIGHT to adjust the brightness. You'll see the screen dim and brighten. When you have the right setting, press SAVE. Pressing Cancel discards all changes.



1. Use the DIM and BRIGHT buttons to adjust the lighting of the color screen.
2. Press the SAVE button to save your setting.

Setting the Screen Pick Up Sensor

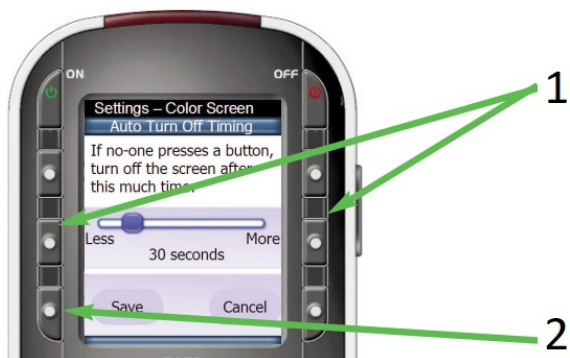
Use the buttons next to YES and NO. If you say YES, the color screen will light as long as you are moving the MX-880. If you say NO, the screen will light when you press any button.



1. Use the YES and NO buttons to set the Pick Up sensor.
2. Press the SAVE button to save your setting.

Setting the Screen Auto Turn Off

Use the buttons next to LESS and MORE to adjust the amount of time the screen will stay lit when you stop moving it (Pick Up Sensor ON) or when you stop pressing buttons (Pick Up Sensor OFF).



1. Use the LESS and MORE buttons to set the Auto Turn Off timing.
2. Press the SAVE button to save your setting.

Setting the Button Lighting

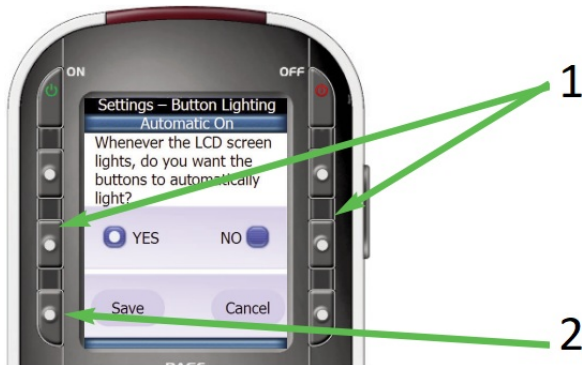
Note that button backlighting uses more battery charge than the screen. So if you would like to extend the time between charges, lower the usage of button lighting.



1. If you turn off Automatic On you will extend battery life (the buttons will still light up when you press the light button).
2. The buttons will stay lit for so many seconds after you stop pressing buttons. Adjust to your preference by pressing this button.

Setting Button Lighting Automatic On

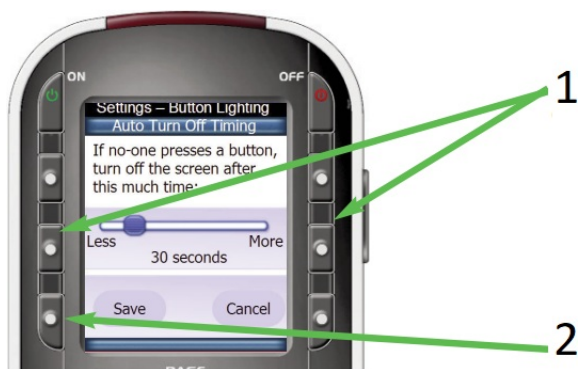
Use the buttons next to YES and NO. If you say YES, the buttons will light whenever the LCD screen is on. If you say NO, the buttons will only light when you press the LIGHT button.



1. Use the YES and NO buttons to set the button back lighting to automatically turn on or not.
2. Press the SAVE button to save your setting.

Setting the Button Lighting Auto Turn Off

Use the buttons next to LESS and MORE to adjust the amount of time the buttons will stay lit when you stop moving it (Pick Up Sensor ON) or when you stop pressing buttons (Pick Up Sensor OFF).



1. Use the LESS and MORE buttons to set the Auto Turn Off timing.
2. Press the SAVE button to save your setting.

System Menu

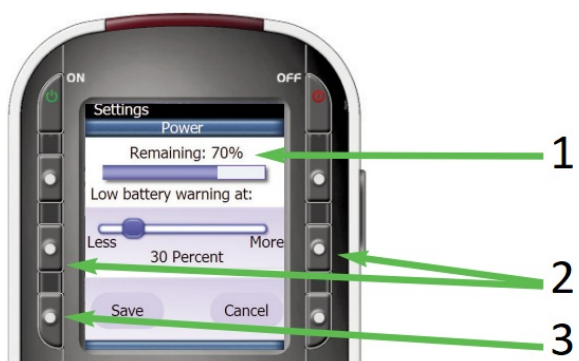
While you are using the MX-880 you can get a more accurate reading of the exact power remaining by checking the System Menu. Additionally, the System Info page offers a look at how much memory you have used.



1. Select Power Remaining to check your power remaining or to set a new battery warning level.
2. To view the system info, press here.

Power Remaining and Battery Warning Settings

On this screen, you can see how much battery charge remains and you can reset the “Low Battery” warning to either 10, 20 or 30 percent. The battery indicator at the top left of the MX-880 screen will flash when your low battery warning level is reached.



1. Note the current remaining battery charge here.
2. Use the LESS and MORE buttons to set the battery warning.
3. Press the SAVE button to save your setting.

System Info

See how much memory you've used on this screen.



1. You cannot make any changes to the data displayed on this screen. It is informational only.
2. Press the OK button to exit.

Setting the Button Beep Volume

Use the buttons next to OFF and LOUDEST to adjust how loud the beeps are.



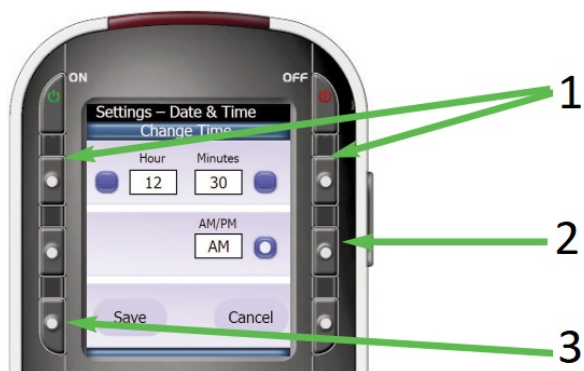
1. Use the OFF and LOUDEST buttons to set the Beep volume.
2. Press the SAVE button to save your setting.

Date and Time Menus

Via the three menus for Date and Time you can set the date, set the time and opt to display either the date or the time.

Setting Time

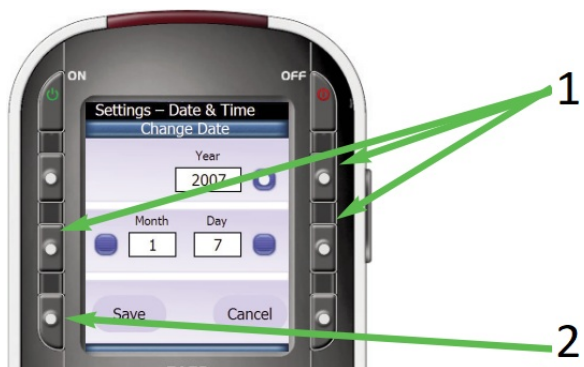
Tap the button beside hour or minutes then use the number keys to enter the correct time. Set the AM/PM by toggling the button. When the time is correct, press the SAVE button.



1. Select the field you'd like to change, then use the Number buttons on the MX-880 to enter hours or minutes.
2. Press this button to change AM to PM or PM to AM. Each press changes the setting. When it is correct, press SAVE.
3. Press the SAVE button to save your setting.

Setting Date

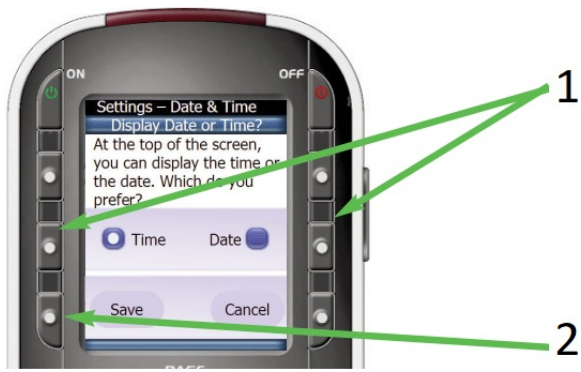
Tap the button beside day, month or year then use the number keys to enter the correct date. When the date is correct, press the SAVE button.



1. Select the field you'd like to change, then use the Number buttons on the MX-880 to enter the year, the month and the day.
2. Press the SAVE button to save your setting.

Setting Display for Time or Date

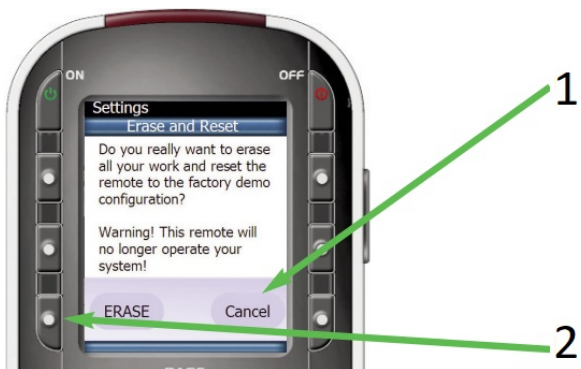
The MX-880 can display either the time or the date, not both. Select what you would like to be displayed and press SAVE.



1. Select either Time or Date display.
2. Press the SAVE button to save your setting.

Erasing and Resetting

You can erase your MX-880 (all of your work, all devices, all activities will be lost) and reset it to the factory default configuration.



1. Use the CANCEL button to exit without erasing.
2. Press the ERASE button to erase all your work.

Specifications

Memory – 32 Megabits of Flash Memory Total (28 Megabits for User Configuration)
 Customization Capability – Up to 48 devices and up to 8 pages each for a total of 384 pages.
 Learning Capability – Standard frequencies (15kHz to 460kHz)
 Macro Capability – Up to 255 steps each
 IR Range (Line of Sight via Infrared): 30-50 feet, depending on the environment
 RF Range (radio frequency): 50 to 100 feet, depending upon the environment
 RF Frequency: 418MHz
 Weight: 6.9 ounces (with battery loaded)
 Size: 8" H x 2.25" W x 1.25" D
 Battery: Lithium Ion rechargeable battery included

Contact Us

Need assistance or have questions?

Our Customer Service Support Center is here to help.

Call (914) 835-4484 to speak with a customer service representative or email us at

techsupport@universalremote.com

500 Mamaroneck Avenue, Harrison, NY 10528

Phone: (914) 835-4484 Fax: (914) 835-4532

www.universalremote.com

Limited Warranty Statement

1. Limited Warranty and Disclaimers

Universal Remote Control, Inc. ("URC") warrants that the URC equipment shall be free from defects in material and workmanship under normal usage for one (1) year from purchase when such is purchased from URC. **This limited warranty is valid only in the United States of America.** URC warrants that the software will substantially conform in any material respect to its functional specifications at the time of delivery. URC SHALL NOT BE LIABLE FOR OPERATIONAL, TECHNICAL OR EDITORIAL ERRORS AND/OR OMISSIONS MADE IN THE URC DOCUMENTATION. URC DOES NOT WARRANT THAT THE URC SOFTWARE IS BUG-FREE OR ERROR FREE OR THAT THERE ARE NO ERRORS/BUGS IN THE URC SOFTWARE.

URC warrants that at the time of purchase the URC equipment and the URC software complied with all applicable regulations and policies of the Federal Communications Commissions ("FCC") regarding electromagnetic interference caused by electronic/computing devices and to the extent that the URC equipment and/or the URC software fails to so comply, URC shall, at its own expense, take all reasonable measures to promptly cause such to comply.

URC equipment purchases from other than an authorized URC dealer or distributor are without warranty.

THIS LIMITED WARRANTY DOES NOT COVER TECHNICAL ASSISTANCE FOR HARDWARE OR SOFTWARE USAGE EXCEPT AS EXPRESSLY PROVIDED FOR HEREIN, THE EQUIPMENT, SOFTWARE AND DOCUMENTATION OF URC ARE SUPPLIED "AS IS" WITHOUT ANY WARRANTY, EXPRESS, STATUTORY OR IMPLIED, OF ANY KIND. TO THE MAXIMUM EXTENT PERMITTED BY APPLICABLE LAW, URC EXPRESSLY DISCLAIMS ALL WARRANTIES, EXPRESS, STATUTORY OR IMPLIED, INCLUDING BUT NOT LIMITED TO THE WARRANTIES OF MERCHANTABILITY AND FITNESS FOR A PARTICULAR PURPOSE. URC DOES NOT WARRANT, GUARANTEE, OR MAKE ANY REPRESENTATIONS REGARDING THE USE OF, OR THE RESULTS OF THE USE OF, THE EQUIPMENT, SOFTWARE OR DOCUMENTATION IN TERMS OF CORRECTNESS, ACCURACY, RELIABILITY OR OTHERWISE.

EXCEPT AS EXPRESSLY PROVIDED FOR HEREIN, TECHNICAL SERVICES ARE SUPPLIED "AS IS", WITHOUT ANY WARRANTY, EXPRESS, STATUTORY OR IMPLIED, OF ANY KIND. TO THE MAXIMUM EXTENT PERMITTED BY APPLICABLE LAW, URC EXPRESSLY DISCLAIMS ALL WARRANTIES, EXPRESS, STATUTORY OR IMPLIED, INCLUDING BUT NOT LIMITED TO THE WARRANTIES OF QUALITY OR REASONABLE SKILL AND CARE, OR OUTCOME OR RESULTS.

WITHOUT IN ANY WAY LIMITING THE GENERALITY OF THE OTHER PROVISIONS HEREIN, WARRANTY DOES NOT COVER: (I) DAMAGE FROM MISUSE, NEGLIGENCE OR ACTS OF NATURE, (II) MODIFICATIONS, (III) INTEGRATION WITH THIRD PARTY CONTENT (IV) BEYOND THE WARRANTY PERIOD AND/ OR FAILURE TO FOLLOW URC WARRANTY CLAIM PROCEDURE.

The warranty limitations and warranty disclaimers may not apply to end user in whole or in part, where such are restricted or excluded by applicable law and such shall apply to the maximum extent permitted by applicable law.

In the event of any warranty claim, URC will, at its sole option, repair the URC equipment using new or comparable rebuilt parts, or exchange the URC equipment for new or rebuilt equipment. **In the event of a defect, these are the end user's exclusive remedies.**

All the URC equipment returned for service, exchange or repair require an RGA number. To obtain an RGA number, you must complete a Return Request Form which you may obtain by calling (914) 835-4484 or contacting URC at returnrequest@universalremote.com. To obtain warranty service, end user must deliver the URC equipment, freight prepaid, in its original packaging or packaging affording adequate protection to URC at 420 Columbus Avenue, Valhalla, NY 10595. It is end user's responsibility to backup any macro programming, artwork, software or other materials that may have been programmed into the unit. It is likely that such data, software, or other materials will be lost during service and URC will not be responsible for any such damage or loss. A dated purchase receipt, bill of sale, installation contract or other verifiable proof of purchase is required. For the URC equipment support and other important information, please visit URC's website available at www.universalremote.com or call the Customer Service Center at (914) 835-4484.

This limited warranty only covers the URC equipment issues caused by defects in material or workmanship during ordinary consumer use. It does not cover product issues caused by any other reason, including but not limited to product issues due to commercial use, acts of God, third-party installation, misuse, limitations of technology, or modification of or to any part of the URC equipment. This limited warranty does not cover the URC equipment sold as used, as is, refurbished, so called "B stock" or consumables (such as batteries). This limited warranty is invalid if the factory applied serial number has been altered or removed from the URC equipment.

This limited warranty specifically excludes the URC equipment sold by unauthorized resellers.

With the exception of URC's IR-only, broad-based consumer remotes, none of URC's PC programmable remotes or any of our Total Control® whole-house equipment are authorized for online internet sales. Buying URC's PC programmable remotes or any of our Total Control® whole-house equipment online means buying equipment that does not have a URC's limited warranty. Such equipment is not eligible for URC tech support or software support, either.

2. URC'S Limitations of Liability

IN NO EVENT SHALL URC BE LIABLE FOR INDIRECT, SPECIAL, INCIDENTAL, EXEMPLARY, PUNITIVE OR CONSEQUENTIAL DAMAGES OF ANY KIND OR LOSS OF PROFITS OR BUSINESS OPPORTUNITY, EVEN IF URC IS ADVISED OF THE POSSIBILITY OF SUCH DAMAGES.

IN NO EVENT SHALL URC BE LIABLE FOR LOSS OF OR DAMAGE TO DATA, COMPUTER SYSTEMS OR COMPUTER PROGRAMS.

URC'S LIABILITY, IF ANY, FOR DIRECT DAMAGES OF ANY FORM SHALL BE LIMITED TO ACTUAL DAMAGES, NOT IN EXCESS OF AMOUNTS PAID BY END USER FOR THE URC EQUIPMENT.

IN NO EVENT SHALL URC BE LIABLE FOR ANY EVENTS BEYOND ITS CONTROL, INCLUDING ANY INSTANCE OF FORCE MAJEURE.

IN NO EVENT SHALL URC BE LIABLE FOR THE ACTS OR OMISSIONS OF END USER OR ANY THIRD PARTY.

THE LIMITATIONS OF LIABILITY MAY NOT APPLY TO END USER IN WHOLE OR IN PART, WHERE SUCH ARE RESTRICTED LIMITED OR EXCLUDED BY APPLICABLE LAW AND SUCH SHALL APPLY TO THE MAXIMUM EXTENT PERMITTED BY APPLICABLE LAW.

URC SHALL NOT BE HELD RESPONSIBLE FOR THE STATEMENTS MADE BY OTHERS.

SOME STATES OR JURISDICTIONS DO NOT ALLOW THE EXCLUSION OR LIMITATION OF INCIDENTAL OR CONSEQUENTIAL DAMAGES, OR ALLOW LIMITATIONS ON HOW LONG AN IMPLIED WARRANTY LASTS, SO THE ABOVE LIMITATIONS OR EXCLUSIONS MAY NOT APPLY TO END USER. THIS LIMITED WARRANTY GIVES END USER SPECIFIC LEGAL RIGHTS AND END USER MAY HAVE OTHER RIGHTS WHICH VARY FROM STATE TO STATE OR JURISDICTION TO JURISDICTION.

End User Agreement

The terms and conditions of the End User Agreement available at www.universalremote.com/eua.php shall apply.

MX-880 SETUP NOTES

Your Listen Devices

List any component or device you'd like to access via the Listen menu:

[illegible]

Your Watch Devices

List any component or device you'd like to access via the Watch menu:


Type of Device (TV, DVD, VCR etc.)	Brand	Model

NOTE



500 Mamaroneck Avenue, Harrison, NY 10528
Phone: (914) 835-4484 Fax: (914) 835-4532
www.universalarmote.com

Documents / Resources

	<p>Universal Remote Control Inc MX-880 Handheld Wand-Style Remote Control [pdf] Instructi on Manual</p> <p>MX-880 Handheld Wand-Style Remote Control, MX-880, Handheld Wand-Style Remote Control , Wand-Style Remote Control, Style Remote Control, Remote Control, Control</p>
-----------------------------------------------------------------------------------	---------------------------------------------------------------------------------------------------------------------------------------------------------------------------------------------------------------------------------------------------------------------------------------------------------

References

- [🌐 The domain name Connected-Technologies.com is for sale](#)
- [🌐 URC Automation | Think Beyond Everyday](#)
- [M_H Manual-Hub.com - Free PDF manuals!](#)
- [User Manual](#)