



# UNIVERSAL DEVICES ISY-994 Series Home Automation Control System User Guide

[Home](#) » [UNIVERSAL DEVICES](#) » UNIVERSAL DEVICES ISY-994 Series Home Automation Control System User Guide 

ISY Users:V5:ZWave:User Guide – Universal Devices, Inc. Wiki

[https://wiki.universal-devices.com/index.php?title=ISY\\_Users:V5...](https://wiki.universal-devices.com/index.php?title=ISY_Users:V5...)

## Contents

- 1 [ISY Users:V5:ZWave:User Guide](#)
  - 1.1 [Z-Wave Plus™ for ISY-994 series User Guide](#)
  - 1.2 [Introduction](#)
  - 1.3 [Z-Wave Top Level Menu](#)
  - 1.4 [Options](#)
  - 1.5 [Add Device](#)
  - 1.6 [Remove Device](#)
  - 1.7 [Learn Mode](#)
  - 1.8 [Add the ISY to an existing Z-Wave Network](#)
  - 1.9 [Remove the ISY from an existing Z-Wave Network](#)
  - 1.10 [Replicate Changes to the ISY](#)
  - 1.11 [Replicate Changes from ISY to another controller](#)
  - 1.12 [Shift Primary Control from ISY to a different Controller](#)
  - 1.13 [Shift Primary Control to ISY from a different Controller](#)
  - 1.14 [Factory Reset](#)
  - 1.15 [Basic](#)
  - 1.16 [Association](#)
- 2 [Documents / Resources](#)
- 3 [Related Posts](#)

## ISY Users:V5:ZWave:User Guide

From Universal Devices, Inc. Wiki

**Z-Wave Plus™ for ISY-994 series User Guide**



## Introduction

This guide assumes the ISY has been successfully installed and that the Administrative Console is available. See [Getting Started](#)

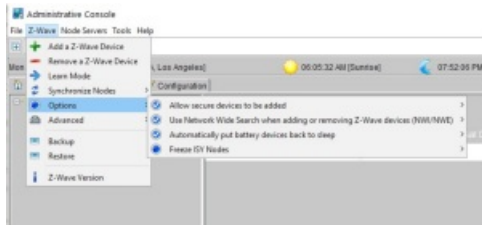
This product can be operated in any Z-Wave™ network with other Z-Wave certified devices from other manufacturers. All non-battery operated nodes within the network will act as repeaters regardless of vendor to increase reliability of the network.

This product is a security enabled Z-Wave product that is able to use encrypted Z-Wave messages to communicate with other security enabled Z-Wave products.

The ISY supports S0 security, but does not support S2 security.

For more advanced topics, see the [Z-Wave Advanced User Guide](#)

## Z-Wave Top Level Menu

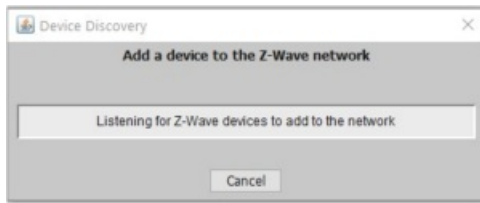


This menu will change depending on how the ISY is made part of the Z-Wave network. For example, **Learn Mode** is not available if the ISY is the SIS and the network is not empty. There is also a Controller Shift option that is only made available when there is no SIS in the Z-Wave network and the ISY is the Primary Controller.

## Options

1. **Z-Wave | Options | Allow secure devices to be added** allows the user prevent devices from being added using S0 security.
2. **Z-Wave | Options | Use Network Wide Search when adding or removing Z-Wave devices (NWI/NWE)** to enable or disable NWI/NWE when adding or removing devices.
3. **Z-Wave | Options | Automatically put battery devices back to sleep** allows the user to keep battery devices awake when they would normally be put back to sleep.
4. **Z-Wave | Options | Freeze ISY Nodes** allows the user to prevent the creation of additional ISY Z-Wave nodes. This option is automatically turned off when adding a device.

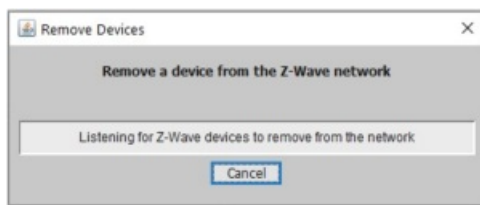
## Add Device



1. Select **Z-Wave | Add a Z-Wave Device** and wait for a popup window to appear.
  - If the popup window does not appear, Select **Z-Wave | Advanced | Stop Adding or Removing a Z-Wave Device** then try again.
2. Put the Z-Wave device you are adding into learn Mode. Refer to the user guide for your product on how to do this. In many cases this just requires you to press a button on the device.
3. The ISY will begin adding the device (this may occur a few seconds after you put the device into learn mode).
  - The popup window will go away and you will see your device added to the tree.

Note: To add a device, it must not already be in a Z-Wave network. Therefore, if you are having trouble adding a device try removing it first.

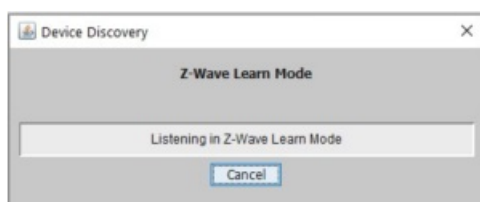
### Remove Device



1. Select **Z-Wave | Remove a Z-Wave Device** and wait for a popup window to appear.
  - If the popup window does not appear, Select **Z-Wave | Advanced | Stop Adding or Removing a Z-Wave Device** then try again.
2. Put the Z-Wave device into learn Mode. Refer to the user guide for your product on how to do this. In many cases this just requires you to press a button on the device.
3. The ISY will remove the device (this may occur a few seconds after you put the device into learn mode).
  - The popup window will go away and the nodes for the device will be removed from the tree.

### Learn Mode

Learn Mode is used to **Add** the ISY to a Z-Wave Network, **Remove** the ISY from a Z-Wave Network, or update its information when already part of a Z-Wave network. When in Learn Mode, it is up to the other controller to determine which action is taken.



1. Select **Z-Wave | Learn Mode** and wait for a popup window to appear.
  - If the popup window does not appear, Select **Z-Wave | Advanced | Stop Adding or Removing a Z-Wave**

**Device** then try again.

2. The ISY will now wait to receive information from another Z-Wave device performing an action such as Add, Remove, etc.
  - The popup window will go away when the operation is complete.
  - In some cases this may take 30 to 60 seconds or longer to complete.

Note: Learn Mode is only available if the Z-Wave network is empty or the ISY is not the SIS for the Z-Wave network.

#### **Add the ISY to an existing Z-Wave Network**

1. Select **Z-Wave | Learn Mode** and wait for a popup window to appear.
  - If the popup window does not appear, Select **Z-Wave | Advanced | Stop Adding or Removing a Z-Wave Device** then try again.
2. Use the instructions for the controller being used to include a new Z-Wave device (the ISY) to the network, and optionally Shift Primary control to the ISY.
3. Wait until the transfer is complete; the instructions for the controller used to include the ISY should tell you what to look for (e.g. LEDs stop flashing, it beeps, etc.)

#### **Remove the ISY from an existing Z-Wave Network**

1. If the ISY is the Primary controller then Shift Primary to a Secondary controller
2. Select **Z-Wave | Learn Mode** and wait for a popup window to appear.
  - If the popup window does not appear, Select **Z-Wave | Advanced | Stop Adding or Removing a Z-Wave Device** then try again.
3. Use the instructions for the other controller to remove a Z-Wave device (the ISY) from the network.
4. Wait until the transfer is complete; the instructions for the other controller should tell you what to look for (e.g. LEDs stop flashing, it beeps, etc.)
5. The popup window will go away when the operation is complete.

#### **Replicate Changes to the ISY**

1. Select **Z-Wave | Learn Mode** and wait for a popup window to appear.
  - If the popup window does not appear, Select **Z-Wave | Advanced | Stop Adding or Removing a Z-Wave Device** then try again.
2. Start replication on the other controller. The user guide for that controller should explain how to do that.
3. Wait until the transfer is complete; the instructions for the other controller should tell you what to look for (e.g. LEDs stop flashing, it beeps, etc.)

#### **Replicate Changes from ISY to another controller**

1. Select **Z-Wave | Add a Z-Wave Device** and wait for a popup window to appear.
  - If the popup window does not appear, Select **Z-Wave | Advanced | Stop Adding or Removing a Z-Wave Device** then try again.
2. Put the other controller into Learn Mode. Refer to the user guide for your product on how to do this.

3. The ISY will begin updating the other controller

#### **Shift Primary Control from ISY to a different Controller**

1. Select **Z-Wave | Shift Primary to another Controller** and wait for a popup window to appear.
  - If the popup window does not appear, Select **Z-Wave | Advanced | Stop Adding or Removing a Z-Wave Device** then try again.
2. Put the other controller into Learn Mode. Refer to the user guide for your product on how to do this.
3. The ISY will begin making the device the new Primary Controller
  - The popup window will go away, and you will see your device added to the tree.

#### **Shift Primary Control to ISY from a different Controller**

1. Select **Z-Wave | Learn Mode** and wait for a popup window to appear.
  - If the popup window does not appear, Select **Z-Wave | Advanced | Stop Adding or Removing a Z-Wave Device** then try again.
2. Put the other controller into Learn Mode. Refer to the user guide for your product on how to do this.
3. Use the instructions for your Primary Controller to start Replication that shifts Primary Control to another device.
4. Wait until the transfer is complete; the instructions for your Primary Controller should tell you what to look for (e.g. LEDs stop flashing, it beeps, etc.)
5. You should start seeing the Z-Wave devices appear in the ISY device tree

Note: Shifting Primary Control is only available if there is no SIS in the Z-Wave network.

#### **Factory Reset**

When the Z-Wave dongle in the ISY is factory reset it is also given a new Home Id and new S0 security keys are generated.

1. To factory reset the Z-Wave dongle, select **Z-Wave | Advanced | Factory Reset Z-Wave Dongle**

If this controller is the primary controller for your network, resetting it will result in the nodes in your network being orphaned and it will be necessary after the reset to exclude and re-include all of the nodes in the network. If this controller is being used as a secondary controller in the network, use this procedure to reset this controller only in the event that the network primary controller is missing or otherwise inoperable.

#### **Basic**

The ISY ignores Basic commands except to detect a button presses from an associated device. The ISY allows the user to control another device in the Z-Wave network using Basic commands by creating an additional ISY node for that device specifically for that purpose.

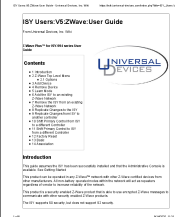
#### **Association**

The ISY supports one group (Group 1, the Lifeline group), with at most one device that can be added to the group. The only message sent from the ISY due to this association is Device Reset Locally

Retrieved from ” /index.php?title=ISY\_Users:V5:ZWave:User\_Guide&oldid=8652”

- This page was last modified on 14 September 2020, at 16:13.
- This page has been accessed 71 times.

## Documents / Resources



[\*\*UNIVERSAL DEVICES ISY-994 Series Home Automation Control System\*\* \[pdf\] User Guide](#)  
ISY-994, Series Home Automation Control System

Manuals+.