



Unitree B2 Go Beyond The Limits Roboworks User Guide

[Home](#) » [Unitree](#) » Unitree B2 Go Beyond The Limits Roboworks User Guide 

Contents

- 1 Unitree B2 Go Beyond The Limits Roboworks
- 2 Specifications
- 3 Product Usage Instructions
- 4 Handling and Maintenance
- 5 FAQ
- 6 Full-scene Adaptation, All-around Robot
- 7 The Ubiquitous All-around Assistant
- 8 Wheeled and Legged forms
- 9 Plug-in battery
- 10 Parameters
- 11 CONTACT
- 12 Documents / Resources
 - 12.1 References

Unitree

Unitree B2 Go Beyond The Limits Roboworks



Specifications

- **Product Name:** Unitree B2
- **Primary Features:** Automotive-grade Lidar, Depth Camera, High-Performance Joint Modules, Large Capacity Battery, High-Resolution Optical Camera
- **Battery Capacity:** 45Ah (2250Wh)
- **Max Running Speed:** [Insert Value]
- **Max Load Capacity:** [Insert Value]
- **Max Joint Torque:** [Insert Value]
- **Intelligent:** Power Solutions Leader
- **3D Mapping:** with Infrared Scanning

Product Usage Instructions

- To power on the Unitree B2, press and hold the power button for a few seconds. To power off, repeat the same process.
- Connect the provided charger to the Unitree B2's charging port and plug it into a power source. Allow the battery to fully charge before use.
- Activate the Lidar and Depth Camera functions through the control panel interface. Adjust settings as needed for your application.
- The High-Resolution Optical Camera can be utilized by launching the camera application on the device. Capture images or videos as required.

Handling and Maintenance

- Keep the Unitree B2 clean and free from dust or debris.
- Regularly check for any loose joints or components and tighten if necessary.

FAQ

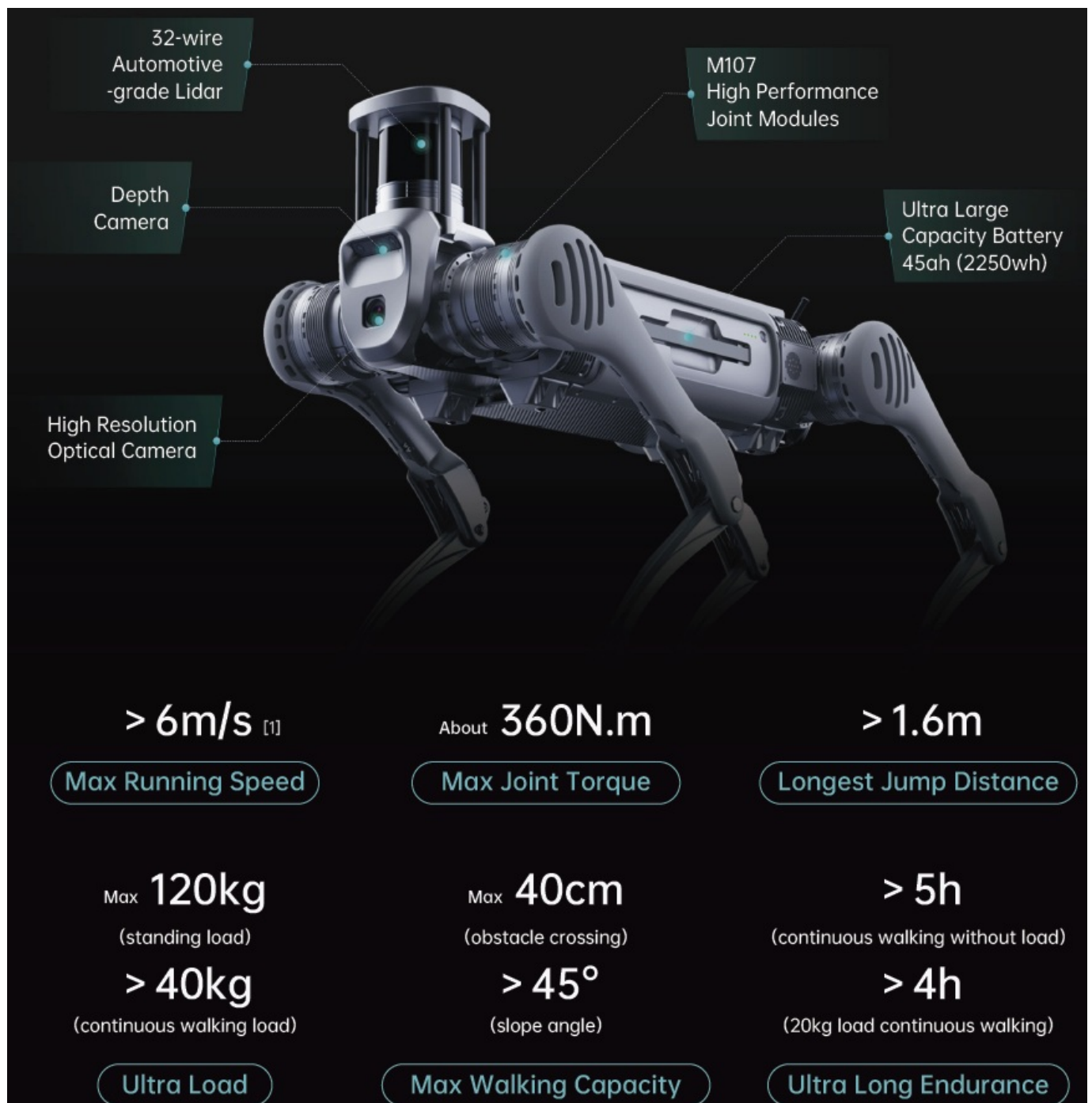
- **Q:** How do I update the firmware of Unitree B2?
- **A:** To update the firmware, visit our website www.unitree.com and follow the instructions provided in the

downloads section.

- **Q:** What is the recommended operating temperature for Unitree B2?
- **A:** The recommended operating temperature range is between [Insert Range] Celsius to ensure optimal performance.
- **Q:** Can I use Unitree B2 in wet conditions?
- **A:** While the Unitree B2 is designed to be weather-resistant, it is recommended to avoid prolonged exposure to wet conditions to prevent damage.

Full-scene Adaptation, All-around Robot

- The comprehensive performance in terms of load, endurance, motion capability and speed is two to three times that of existing quadruped robots worldwide!



The Ubiquitous All-around Assistant

- Leading Industrial Intelligence in All Scenarios.

Power Inspection

- Intelligent Power Solutions Industry Application Leader



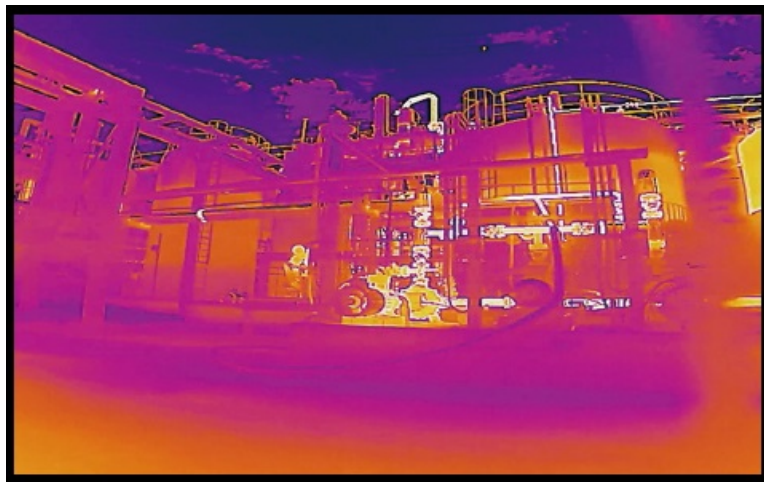
Emergency Rescue

- Working on all-terrain like long stairs, rock piles, steep slopes, etc.



Industrial Inspection

- Infrared Scanning 3DMapping Optimized environmental perception



All-rounded to Cope with A Variety of Environments

- Excellent terrain adaptability to ensure stable travel on slippery or uneven surfaces.



Climbing Stairs As If They Were Flat

- Effortlessly tackling steps of over 40cm.



100% Increase in Sustained Load 200% Increase in Endurance

- 100% increase in continuous walking with a load greater than 40kg; continuous walking with a 20kg load can last for greater than 4 hours with over 15km mileage.

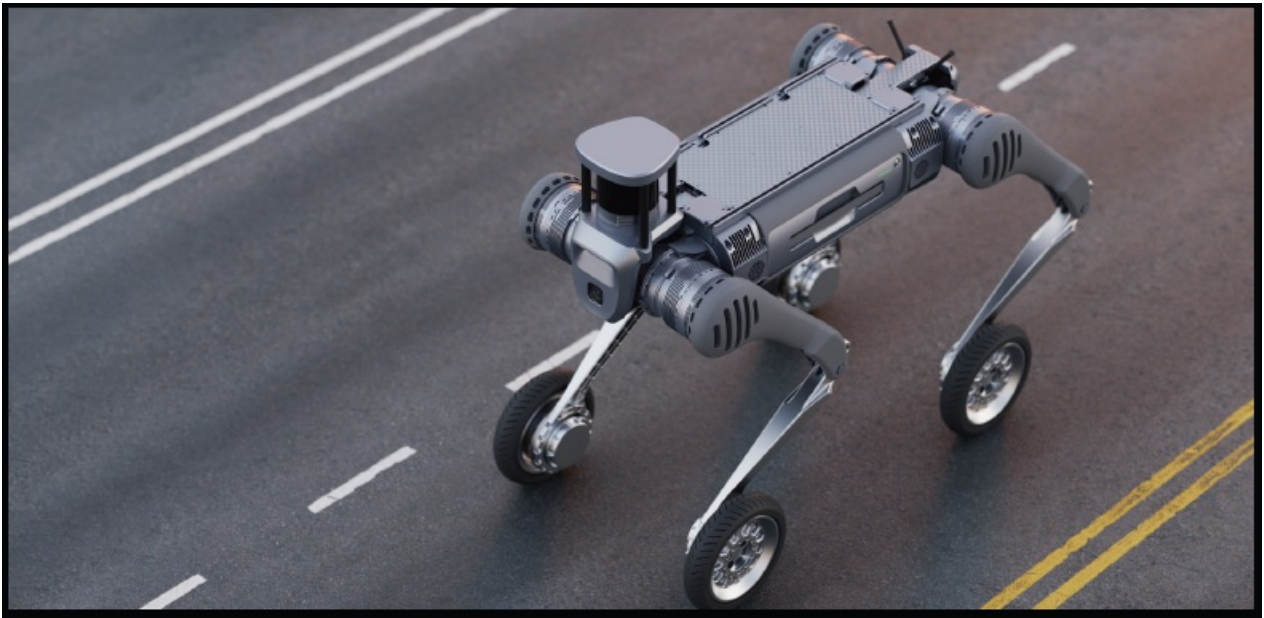


- 4170% Increase in Joint
- Performance with 360 N.m of Torque
- Extreme performance provides greater flexibility and stability for industrial operations.

Wheeled and Legged forms

Breaking Through Endurance Limitations

The innovative structural design of the B2 realizes switching between legged and wheeled forms (optional).



Plug-in battery

- Stable and Reliable Autonomous Charging
- B2 battery supports quick change and also supports autonomous charging solutions (optional), suitable for a wide range of solutions.



Parameters

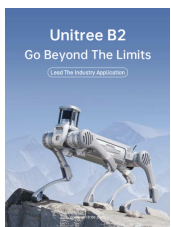
- **Size(Standing):** 1098mmx450mmx645mm
- **Size(Lying Prone):** 880mmx460mmx330mm
- **Weight:** ~60kg Total weight (battery included)
- **Battery Performance:** Battery capacity 45Ah (2250Wh) , voltage 58V
- **Endurance Ability:** Battery life 4-6h
 - Walking without load > 5h, and the mileage > 20km
 - Walking with 20kg load > 4h, and mileage> 15km
- **Wheeled Foot:** Optional

- **Load(Standing):** Max. 120kg
- **Load(Walking):** > 40kg
- **Continuous Stair Climbing:** Stairs of 20~25cm
- **Single Obstacle Crossing:** Climb up and down stairs of 40cm in forward direction
Climbing Angle: > 45°
- **Operating Temperature:** -20°C ~ 55°C
- **Running Speed:** > 6m/s (11
- **Ditch Jumping Width:** 0.5~1.2m
- **Max Jump Distance:** > 1.6m
- **Ingress Protection:** 1P67
- **Control and Perception:** intel Core i5x1, intel Core 17x3, Nvidia Jetson Orin NXx1 (Varies with different configurations)
- **Sensing Sensor:** 3D LiDARx1+ Depth camerax2+ Optical camerax2 Varies with different configurations)
- **Interface:** 1000M-Base-Ethernetx4, USB3.0x4, 12Vx4, 5Vx1, 24Vx4, BAT*1

CONTACT

- Tel : +852 3727 8000
- Website: www.OTG.com.hk
- OTG Store: store.OTG.com.hk
- Email: Solutions@OTG.com.hk

Documents / Resources



[Unitree B2 Go Beyond The Limits Roboworks](#) [pdf] User Guide

B2 Go Beyond The Limits Roboworks, B2, Go Beyond The Limits Roboworks, Beyond The Limits Roboworks, The Limits Roboworks, Limits Roboworks, Roboworks

References

- [U Unitree Robotics -Global quadruped robots pioneer](#)
- [User Manual](#)

[Manuals+](#), [Privacy Policy](#)

This website is an independent publication and is neither affiliated with nor endorsed by any of the trademark owners. The "Bluetooth®" word mark and logos are registered trademarks owned by Bluetooth SIG, Inc. The "Wi-Fi®" word mark and logos are registered trademarks owned by the Wi-Fi Alliance. Any use of these marks on this website does not imply any affiliation with or endorsement.