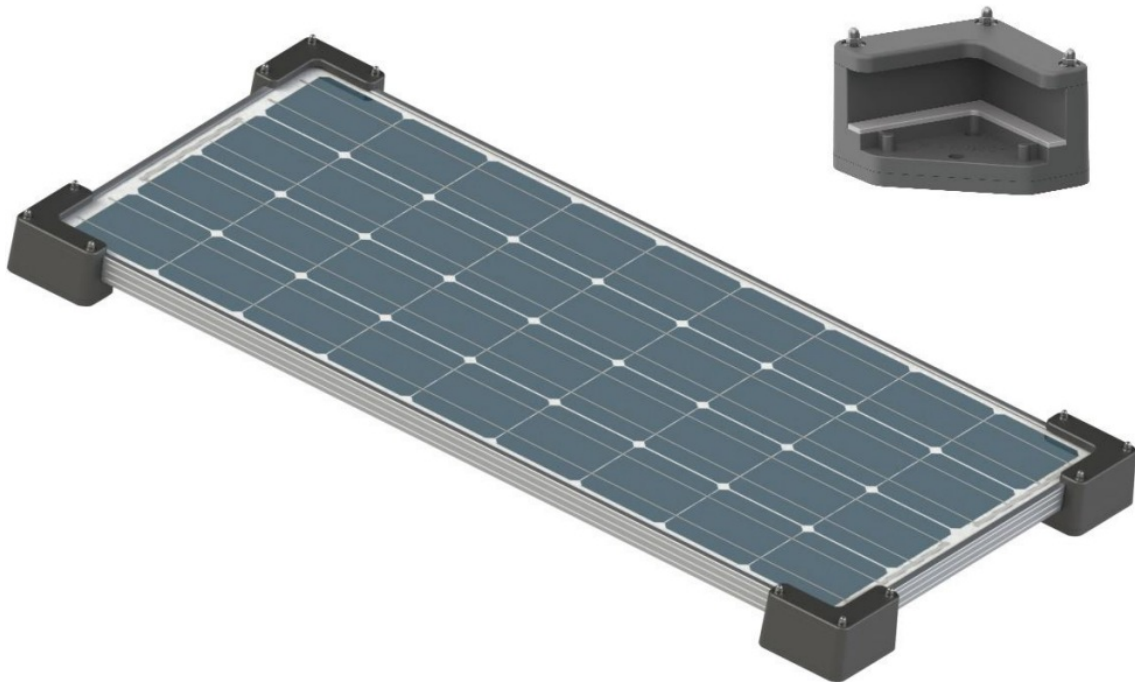


UNITECK UNIFIX 1.C 30 Mounting Bracket Campervan User Manual

[Home](#) » [UNITECK](#) » UNITECK UNIFIX 1.C 30 Mounting Bracket Campervan User Manual 



UNIFIX 1.C 30 Mounting Bracket Campervan User Manual



The mounting bracket for Campervan

Dear customer, thank you for purchasing one of our Uniteck products. Please read all the instructions carefully and thoroughly before using the product.

The Unifix 1C 30 mounting bracket has been designed to be used on a flat surface (ex.: campervan roof, houseboat).

Contents

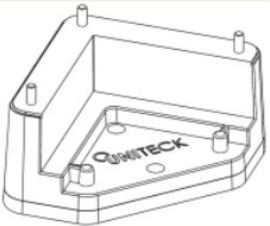
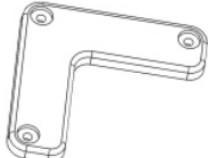






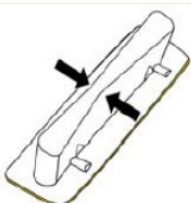
- 1 SAFETY INSTRUCTIONS
- 2 UNIFIX – COMPOSITION
- 3 UNIFIX – PANEL FIXING
- 4 ROOF PASS FIXING (PRODUCT NOT INCLUDED)
- 5 TECHNICAL SPECIFICATIONS
- 6 WARRANTY
- 7 Documents / Resources
 - 7.1 References
- 8 Related Posts

SAFETY INSTRUCTIONS

- Take the appropriate measures to prevent accidents during your mounting steps.
- If the bracket and the mounting tools are exposed to sunlight for a long period, there is a risk of getting burnt. Make sure to protect yourself accordingly.
- When finished, check and ensure that all of your brackets and panels are fixed properly.

UNIFIX – COMPOSITION

Provided elements

				
x4	x4	D5 x12	D5 x12	M5 x12
				
X4 Low wedge	X4 Blocking wedge	x1 Glue	X1 Degreaser	

For the mounting, make sure you have a slightly wet cloth.

For the preparation of the surface before gluing the brackets: only use a wet cloth and the degreaser provided. Do not use alcohol/white spirit...



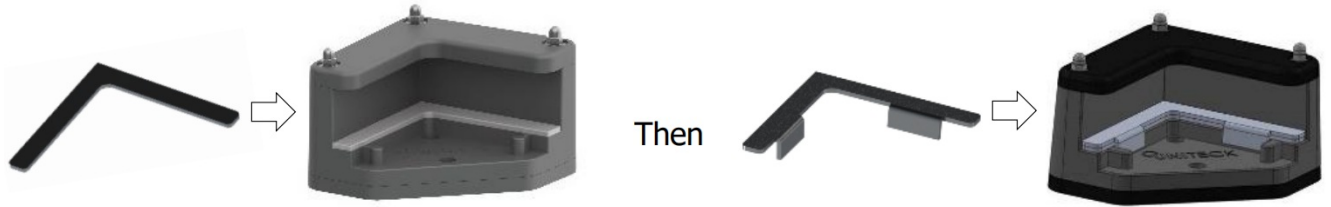
Respect 24 hours of drying time. Do not move or manipulate during this time.

Sika flex must be applied at a temperature between 5°C and 35°C, the optimum application temperature being between 15°C and 25°C.

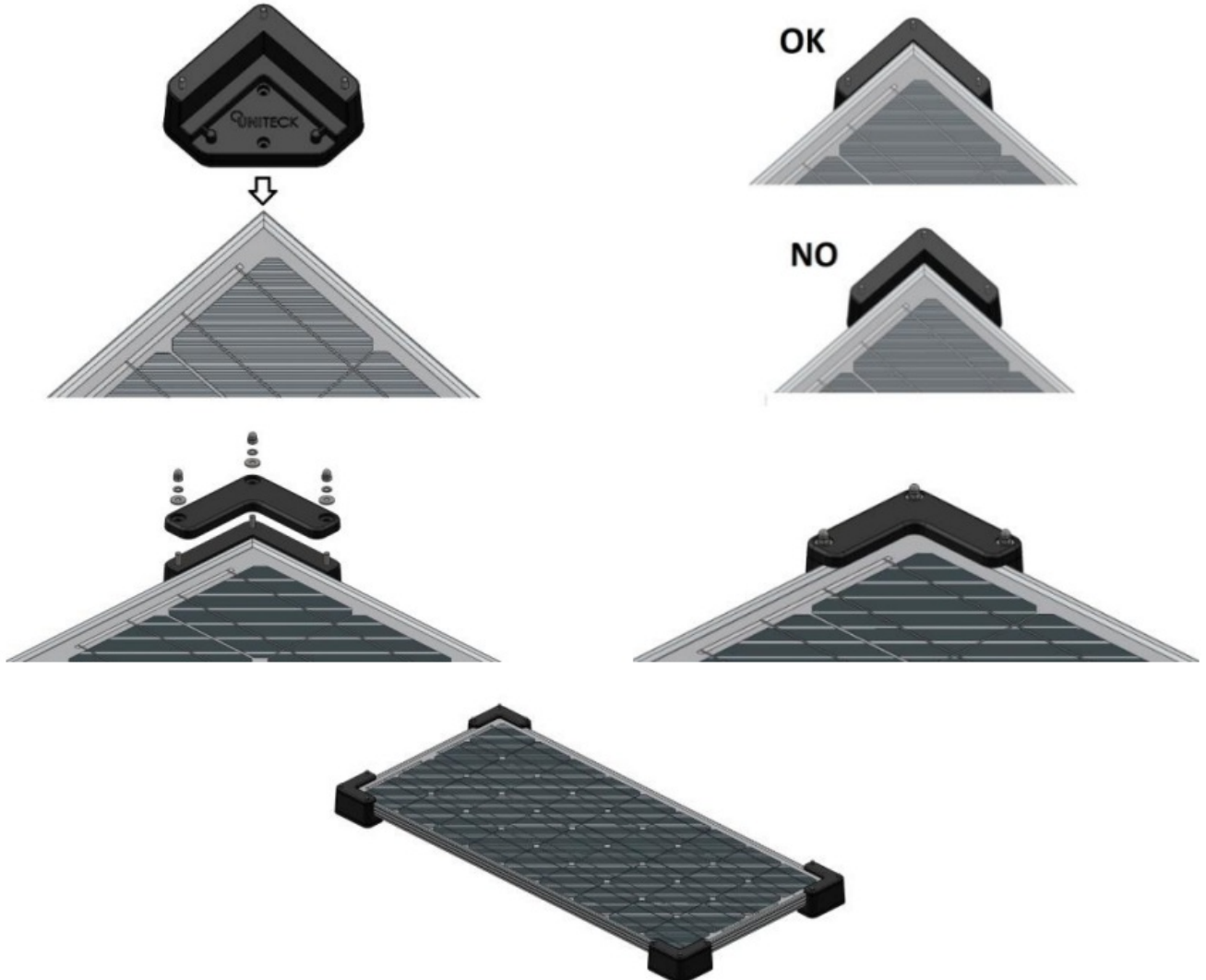
UNIFIX – PANEL FIXING

Your surface must be cleaned, dried, without grease or dust. Beforehand, clean the surface with a wet cloth (not provided), then let it dry for a few minutes (do not use alcohol/white spirit).

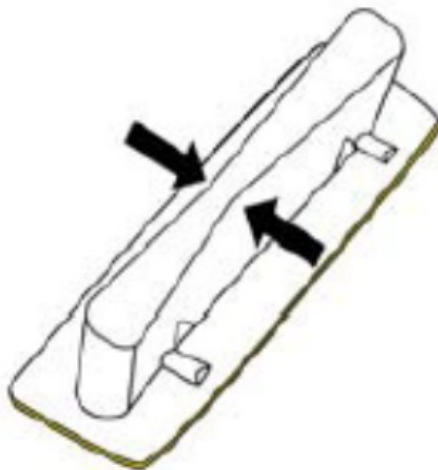
- Install the low wedge and then the blocking wedge on all four corners.



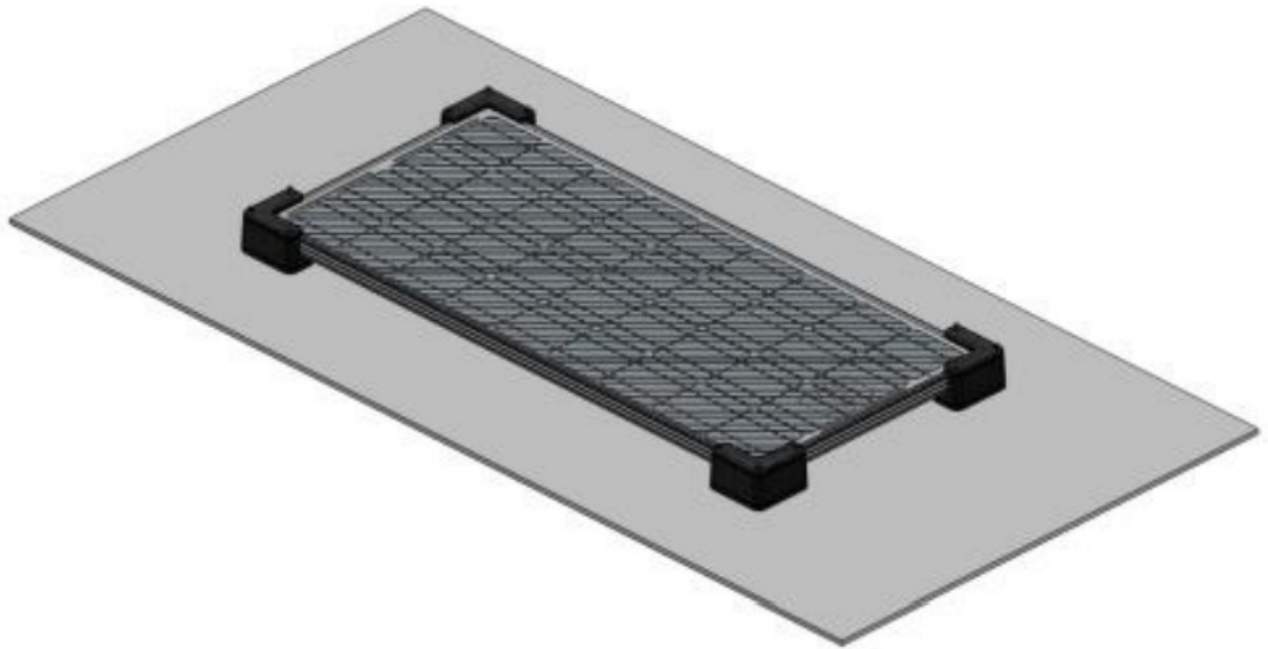
- Fix the 4 brackets on your panel



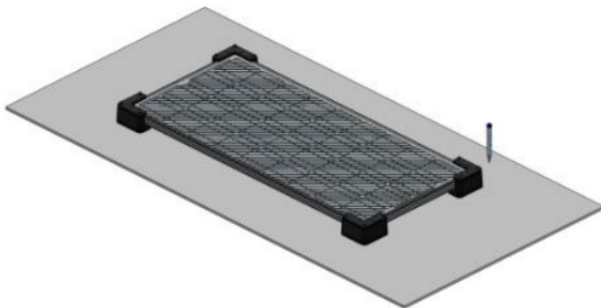
- Clean the bottom of the brackets (area that will get glued) with the degreaser provided (do not use alcohol/white spirit...).



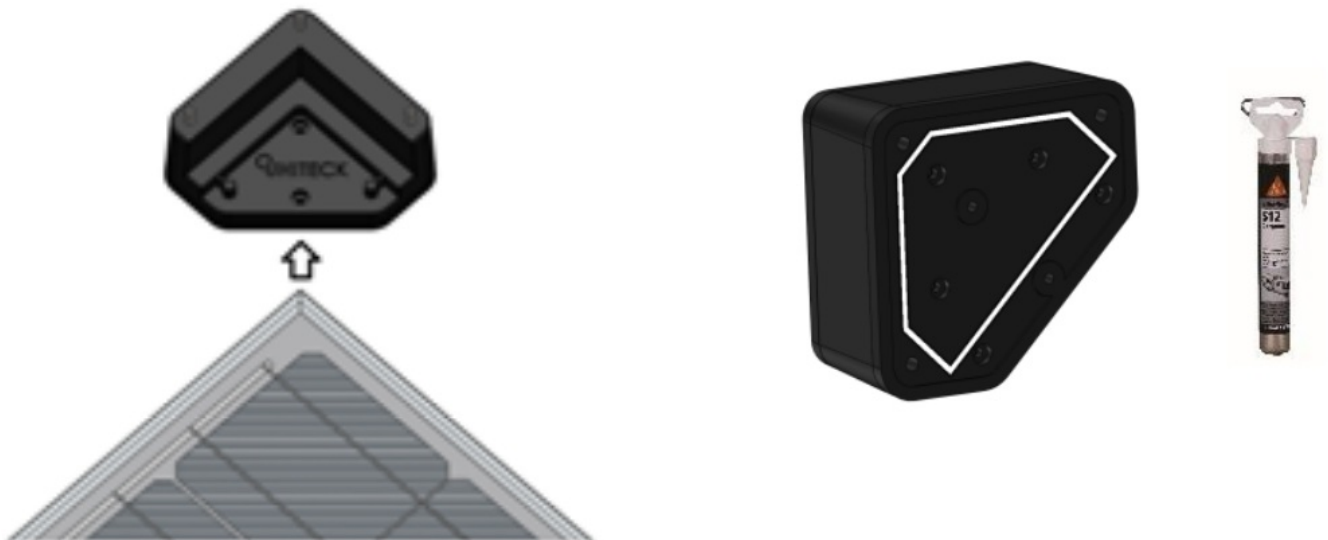
- Place your panel in the desired position (without glueing)



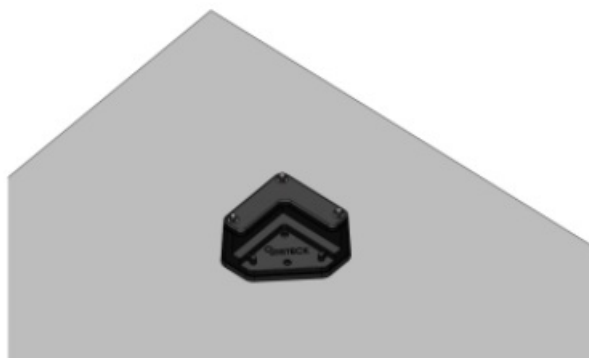
- Place a mark around the brackets to visualise the mounting zone



- Remove the angles from your panel then Put the glue on your 4 brackets as indicated in white on the picture



- Place the brackets on the previously marked surfaces. Press briefly down on the brackets.

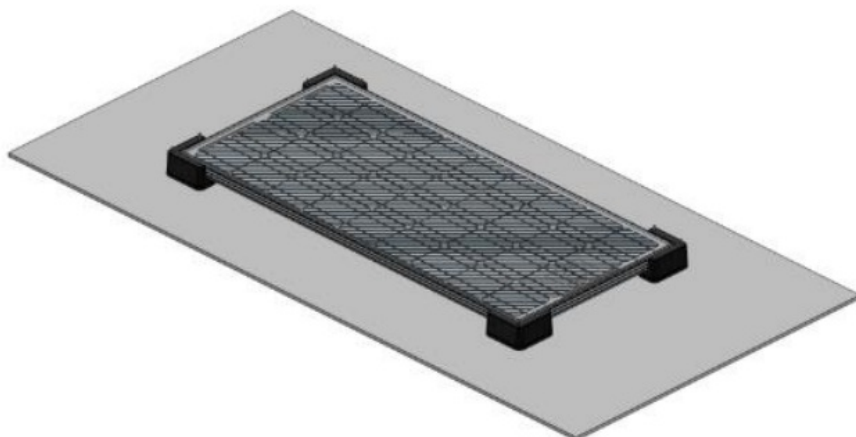




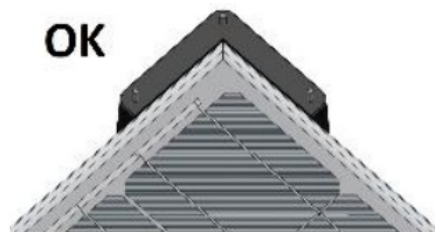
Respect 24 hours of drying time. Do not move or manipulate during this period.

During this waiting time, you can fix the roof pass (cf roof pass part).

- Put the panel on the fixing angles.



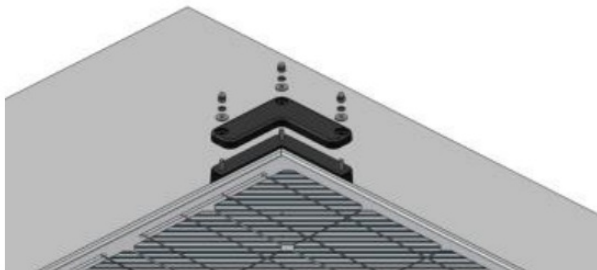
OK



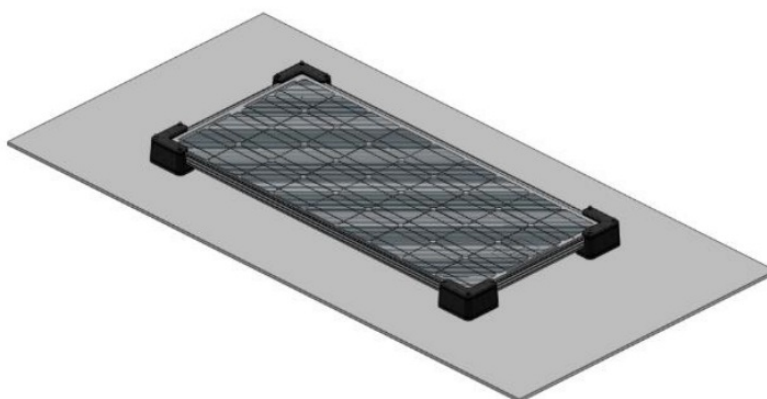
NO



- Fix the 4 upper parts of the angles on the brackets using the flat washers, the lock washers and the cap nuts

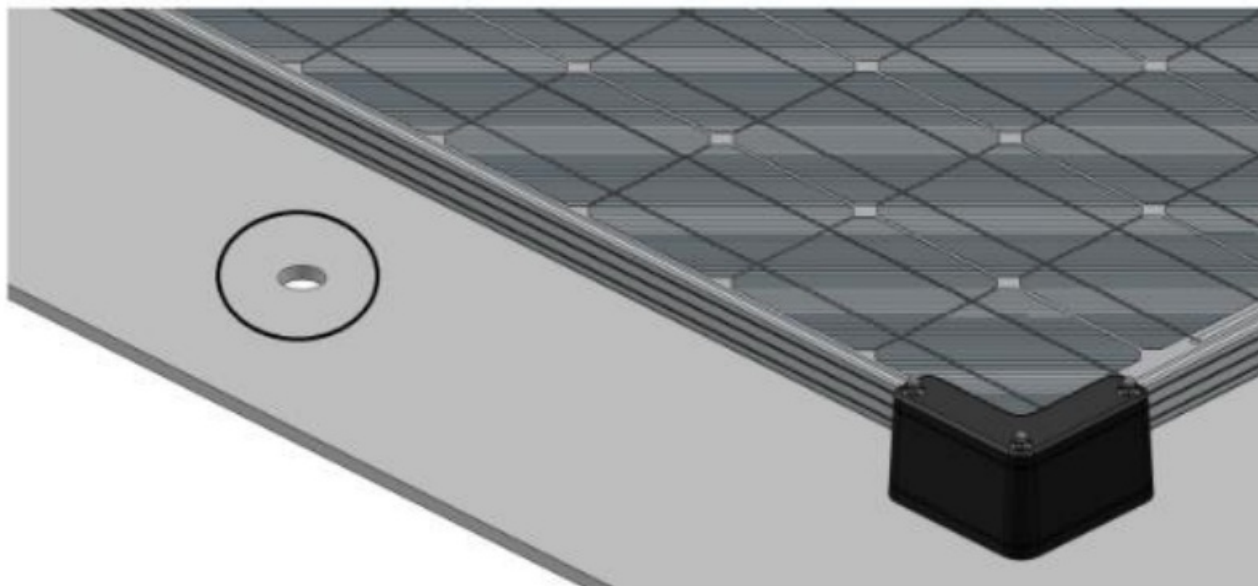


		
D5 X4	D5 X4	M5 X4

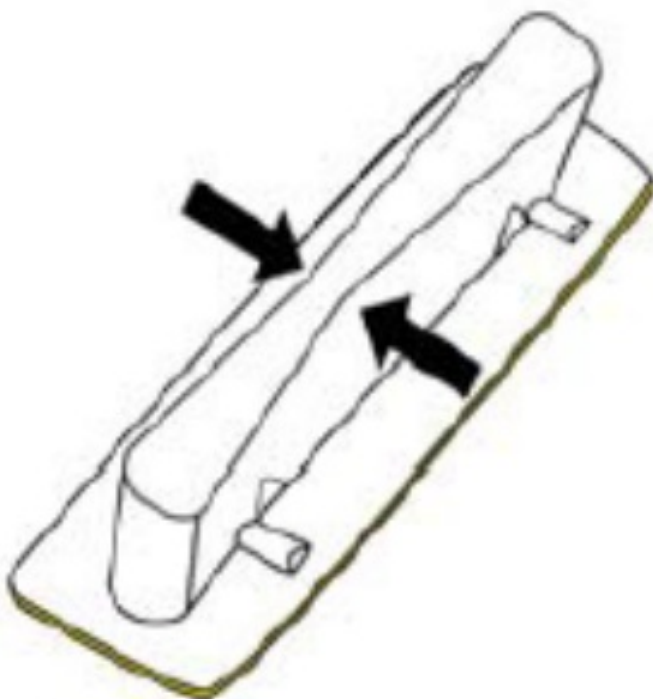


ROOF PASS FIXING (PRODUCT NOT INCLUDED)

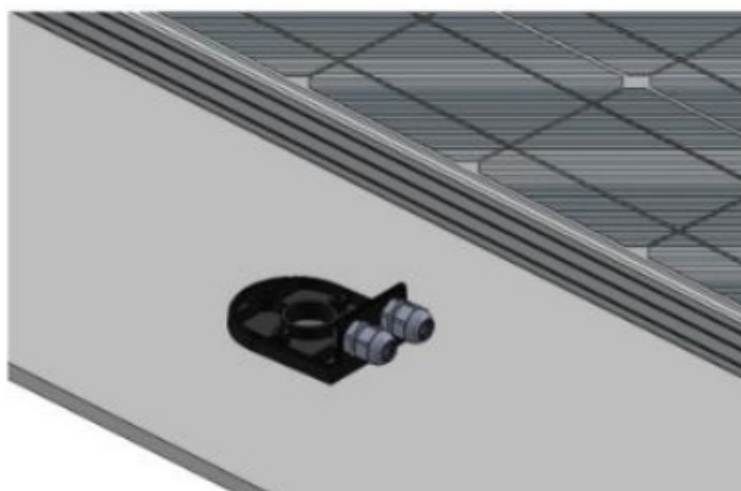
- Drill a hole using a hole saw. Diameter between 15 and 20mm



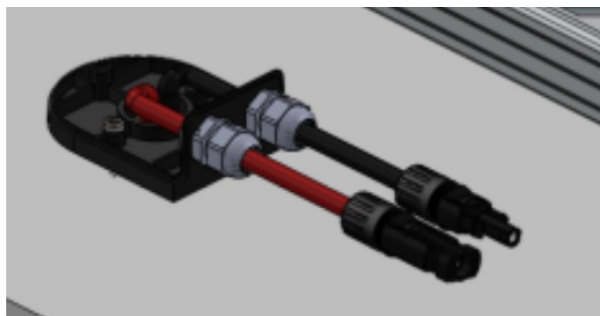
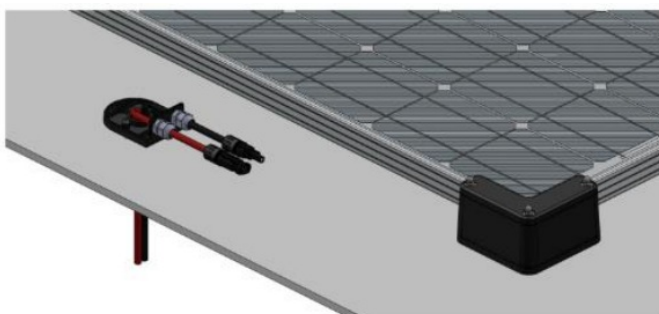
- Clean the fixing zone with the provided degreaser (do not use alcohol/white spirit...).



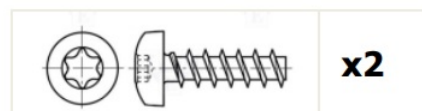
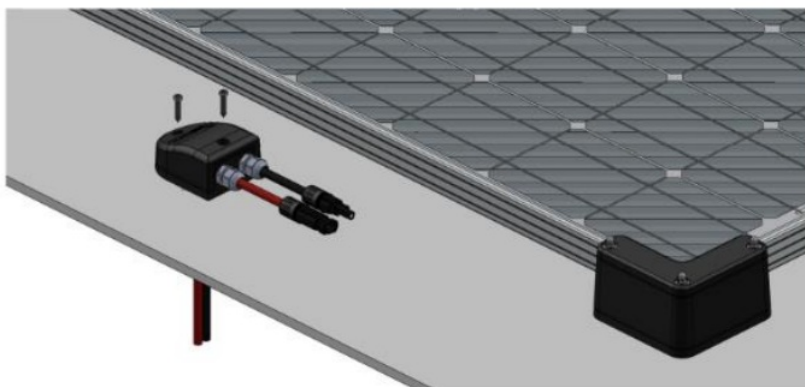
- Put the provided glue on the area indicated in white on the picture below, then put it over the drilling hole.



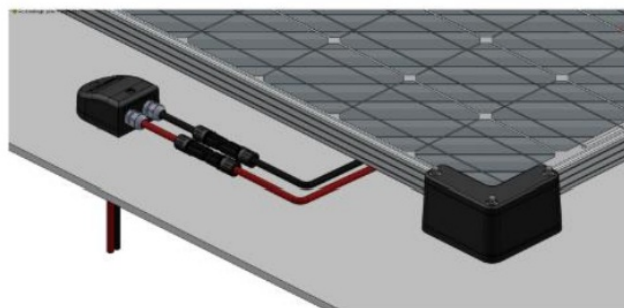
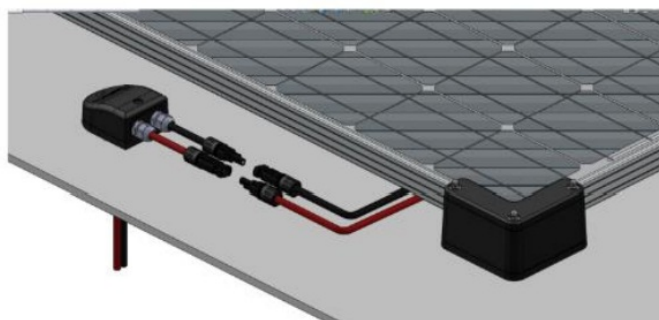
- Pass the cables as seen on the picture below. Keep a sufficient length for the connection. Tighten the nuts of the cable gland to ensure waterproofness



- Close the cover with the 2 plastic screws



- Connect the connectors between them. (No risk of error, connectors are polarized).



TECHNICAL SPECIFICATIONS

.....	UNIFIX 1.C 30
Dimension	125 x 125 x 85 mm
Weight (with fastenings)	340 g
Fastening	Inox fastening
Plastic elements	Polyamide nylon 66 + 30% added glass fibre

WARRANTY

The warranty covers any defect, manufacturing flaws for 1 year from the date of its purchase (Pieces and workforce).

Warranty does not cover:

- normal wear of parts
- faulty mounting of bracket

In case of failure, return the product to your distributor by attaching:

- the dated proof of purchase (receipt, bill...)
- explanatory note of the failure

Caution: Our after-sales service does not accept carriage forward/ collected returns.

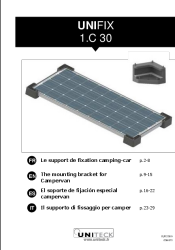
After the warranty, our after-sales service ensures repairs after acceptance of a quotation.





After-sales service contact :

Uniteck- 1 Avenue de Rome
Zae Via Europa – bâtiment Cassis
34350 Vendres -France
E-mail : sav@uniteck.fr
Fax : +33 (0)4 88 04 72 20
www.uniteck.fr

Documents / Resources

	<p>UNITECK UNIFIX 1.C 30 Mounting Bracket Campervan [pdf] User Manual</p> <p>UNIFIX 1.C 30 Mounting Bracket Campervan, UNIFIX 1.C 30, Mounting Bracket Campervan, B racket Campervan</p>
---	--

References

-  [Fabricant Français](#)
-  [Fabricant Français](#)