

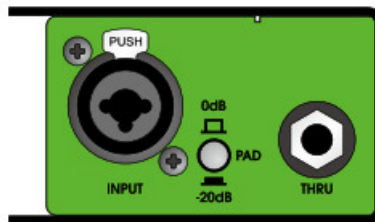


## UNiKA PROONE Pro Series Audio Interface Single Passive Direct Box User Manual

[Home](#) » [UNiKA](#) » UNiKA PROONE Pro Series Audio Interface Single Passive Direct Box User Manual 



PROONE  
PRO SERIES AUDIO INTERFACE  
SINGLE PASSIVE DIRECT BOX  
DESIGN & MADE IN TAIWAN  
USER MANUAL



**UNiKA Electronic Co., Ltd.**

[www.unikapro.com](http://www.unikapro.com)

6F, No.168, Xin-Hu 2nd Rd.  
Nei-Hu District, Taipei City. 11494.  
Taiwan, R.O.C.



+886 2 27933017



+886 2 27928264



[info@unikapro.com](mailto:info@unikapro.com)

## Contents

- 1 GENERAL PRECAUTION BEFORE USE
- 2 PRODUCT OVERVIEW
- 3 PARAMETER TEST CONDITIONS
- 4 FEATURES
- 5 APPLICATIONS
- 6 APPEARANCE PARTS & FUNCTIONS
- 7 ISO TRANSFORMER SCHEMATIC
- 8 INPUT PAD ATTENUATION
- 9 ELIMINATING GROUND LOOP NOISE
- 10 CONNECTION GUIDE
- 11 SPECIFICATIONS
- 12 EU DECLARATION OF CONFORMITY
- 13 Documents / Resources
- 14 Related Posts

## GENERAL PRECAUTION BEFORE USE

Thank you for purchasing the UNiKA PRO SERIES AUDIO INTERFACE. Before using, please read this manual carefully and pay attention to every detail that you must pay attention to. If you use a mixer to connect to this interface, please turn off the mixer power and +48V phantom power before connecting, and then turn on the power and phantom power after inserting the signal cables. For passive models, please do not turn on the phantom power to avoid leakage or damage the equipment. If using a model with a volume knob, turn the volume knob to the minimum. During use, please do not plug or unplug the wires arbitrarily to avoid signal loss. Please refer to the following instructions for the soldering method of the plugs to ensure the expected level and keep the signal smooth.

If you need further installation or operation guidance, please directly contact UNiKA's dealer or distributor, or write to the following mail address for help:



[info@unikapro.com](mailto:info@unikapro.com)

## PRODUCT OVERVIEW

PRO ONE is a passive single-channel DI box. No need to install a battery or provide phantom power to make it work.

EI30A10E 1+1:1+1 isolation transformer, which has a special copper foil layer and a dedicated ground layer, which allows this device to restore high signal/noise ratio and dynamic sound, and can avoid unnecessary leakage caused by radio frequency interference, ground interference, and potential difference. PRO ONE is particularly suitable for electronic musical instruments,

recording studios and fixed installation projects that do not use mixers. It converts PRO ONE has a built-in UNiKA-PRO™ high-impedance signals into low-impedance balanced signals, which facilitates extending the wiring distance and blocking interference.

The PRO ONE uses a balanced/unbalanced combo socket on the input, and a TRS throughout is convenient for musician to pass the direct signal to the instrument amplifier. In addition, it is equipped with a 0/-20dB attenuation switch, which is suitable for various types of audio signals with high and low impedance. The output terminal is also equipped with a GND/LIFT button to quickly eliminate ground noise.



### CAUTION

This product has undergone rigorous inspection before leaving the factory. If customers encounter failures during use, please contact your local dealer or distributor for replacement or repairing, do not disassemble the case or replace parts by yourself, which will invalidate the warranty.

For details, please refer to the warranty regulations in the enclosed warranty card, and fill in the details, and get a

valid stamp or signature of the dealer or distributor.

## **PARAMETER TEST CONDITIONS**

In the development and manufacturing process, Audio Precision's 2700 series and 500 series are used to test and verify electrical characteristics.

## **FEATURES**

- Built-in UNiKA-PRO™ EI30A10E isolation transformer
- The input socket uses a Combo jack
- Use TRS jack as throughout terminal
- There is 0dB/-20dB input signal attenuation switch
- The output is equipped with a GND/LIFT switch

## **APPLICATIONS**

- Convert unbalanced signals of various audio equipment into balanced signals, such as the headphone or line output of computers, play deck or mobile devices.
- Convert the unbalanced signal of the electronic musical instrument into a balanced signal and send it to the mixer.
- Isolate the leakage and hum be generated by potential when two different systems are connected but powered by a separate power system or power generator.

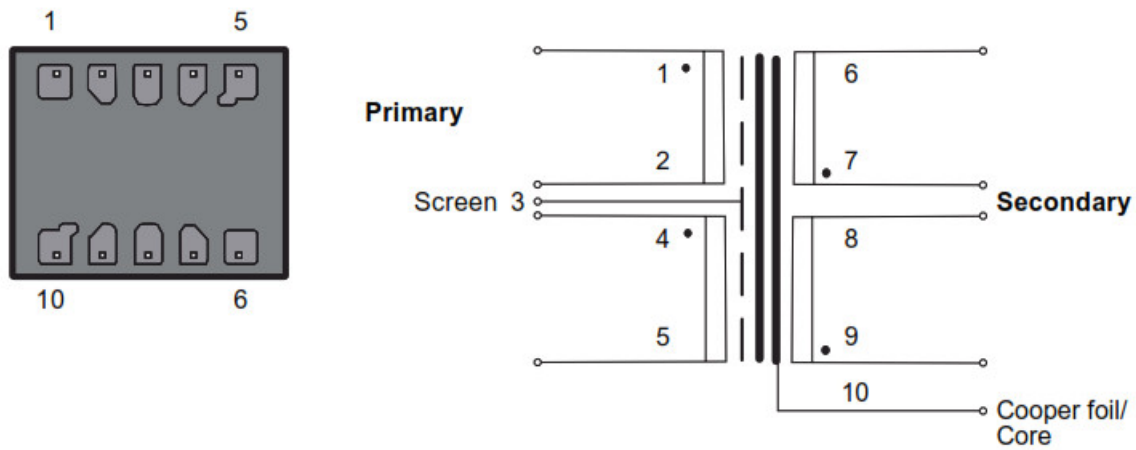
## **APPEARANCE PARTS & FUNCTIONS**



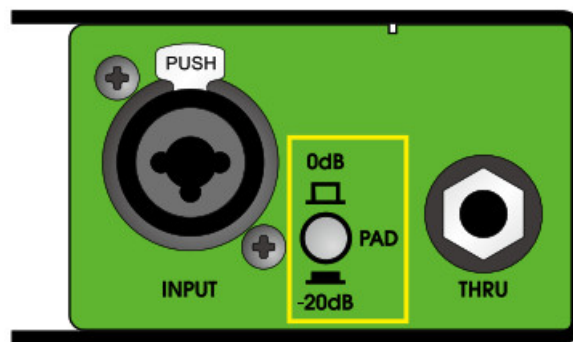
1. Signal output: XLR terminal, isolated balanced output of the Transformer.
2. Output grounding/floating switch: when the switch is not pressed, the first pin (PIN-1) of XLR is grounded. PIN-1 will be disconnected from the ground after pressing. This button should depend on the system. Used in the situation, in order to isolate the ground loop noise or leakage.
3. Signal input: One combo jack be able to input balance and unbalance signal by TRS/TS and XLR plug.
4. PAD input attenuation switch: Provide 0/-20dB two options, when input signals of various impedances and levels.  
It can be attenuated by 20dB to avoid overload or clipping.
5. Signal throughout Convenient for musicians musical instrument speakers or other DI and peripheral equipment.

## ISO TRANSFORMER SCHEMATIC

UNiKA-PRO™ EI30A10E

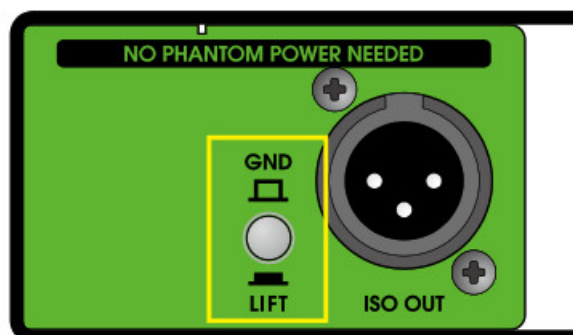


## INPUT PAD ATTENUATION



The most widely used DI box is to connect electronic musical instruments, the sound source of A/V equipment and computers, convert their output signals into balanced signals, and then extend the transmission distance. The most ideal state is to set the attenuator to 0dB position (button up). For some high-level output signals, you can press the button to make the signal is attenuated by 20dB to avoid clipping caused by signal overload. When the button is pressed, the PAD indicator on the right will light up.

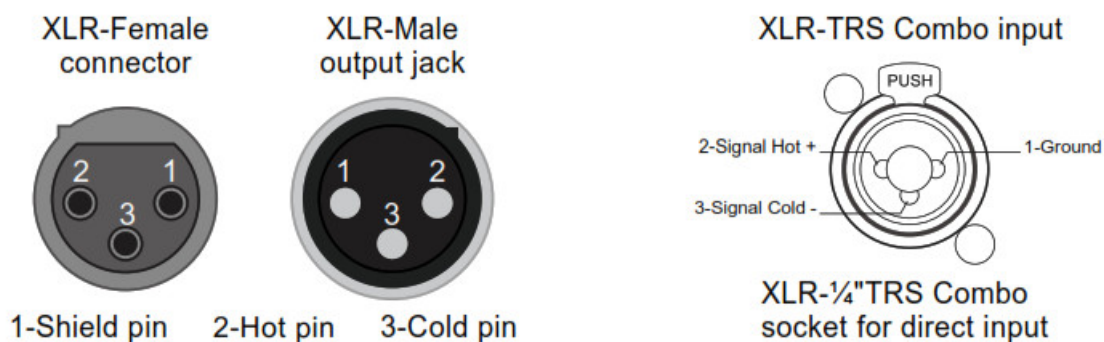
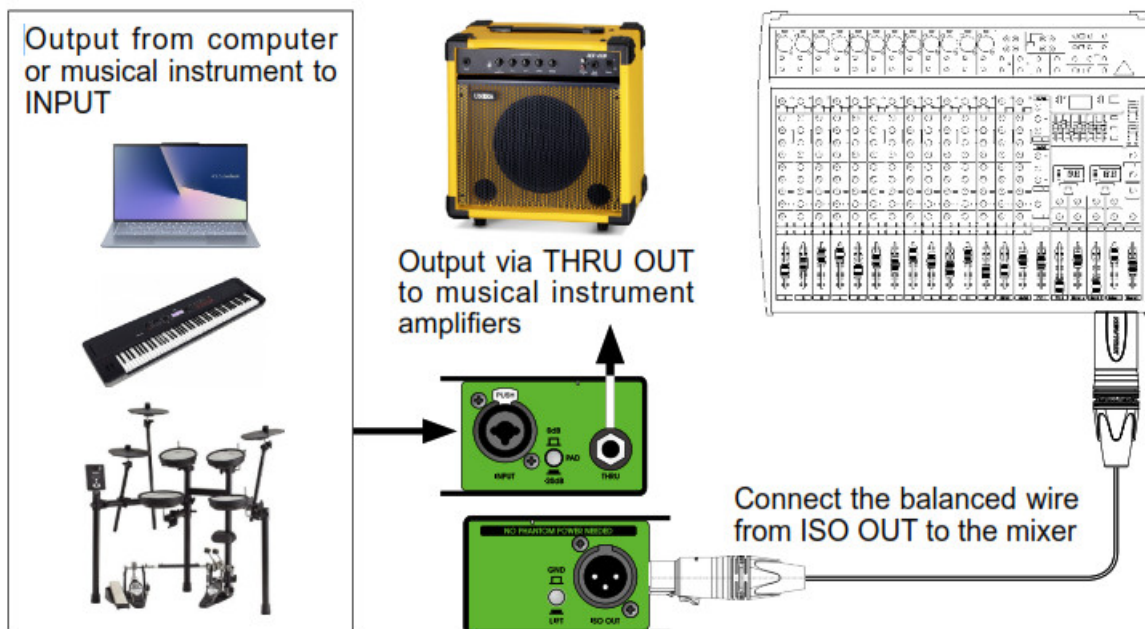
## ELIMINATING GROUND LOOP NOISE



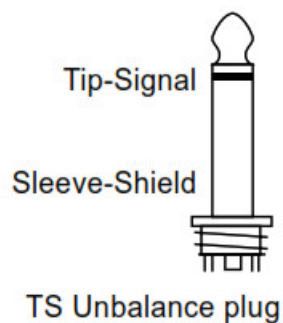
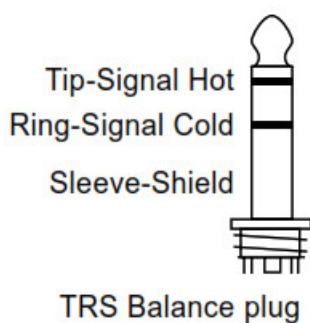
The built-in channel-independent balanced isolation transformer has solved the potential difference leakage problem. When the system causes a ground loop due to poor wiring, the noise can be eliminated through the GND/LIFT button.

The GND/LIFT button determines whether pin 1 of the output XLR is grounded, grounded when it bounces, and disconnected from the ground when pressed.

## CONNECTION GUIDE



The unbalanced connection, pin-2 is hot, pin-3 is shield paralleled with pin-1.



## SPECIFICATIONS

(Specifications are subject to change without notice.)

## PRO ONE

Circuit principle	Passive/Transformer balance output
Input connector	1 x Combo
Thru connector	1 x TRS
Input pad switch	0/-20dB push button
Output connector	1 x Male XLR through ISO Transformer
Output GND/LIFT switch	Push-button
Input impedance	1K $\Omega$ / 0dB & -20dB
Output impedance	50 $\Omega$
Max. input level before clipping	+22dB
Max Output level	+22dB
Frequency response	20Hz-20KHz, -0.3/+0dB
S/N ratio @20Hz~20KHz un-weight	>120dB
T.H.D. @1KHz 0dBV output	<0.02%
Transformer Ratio	1:1+1:1
Chassis	1.6mm/1.2mm steel cabinet and chassis
Surface finished	Durable complex painting
Dimension (W x D x H)	78 x 124 x 46 mm
Weight	0.55kg
Shipping weight	0.65kg
Packing per carton	20pc/14kg
Shipping dimension per carton	350 X 310 X 207 mm

## EU DECLARATION OF CONFORMITY





## 1. Equipment

Product name	Single passive direct box
Model	PRO-ONE
EAN Code	4.71E+12

## 2. Manufacturer

Manufacturer	UNiKA Electronic Co.,Ltd.
Address	6F, No.168, Xinhua 2nd Road, Nei-Hu, Taipei, Taiwan

3. This declaration of conformity is issued under the sole responsibility of the manufacturer.

4. Object of the declaration, Product: Direct box for musical instrument and A/V device.

5. The object of the declaration described in point 4 is in conformity with the relevant Union harmonization legislation 2014/30/EU The Electromagnetic Compatibility Directive

6. References to the relevant harmonized standards used, or references to the specifications in relation to which conformity is declared:

EMI:

EN 55032:2015	IEC 61000-4-3:2006+A1:2007+A2:2010
EN 61000-3-3:2014	IEC 61000-4-4:2012
EN 61000-3-3:2013	IEC 61000-4-5:2014+A1:2017
EMS:	IEC 61000-4-6:2013/CORE1:2015
EN 55035:2017	IEC 61000-4-8:2009
IEC 61000-4-2:2008	IEC 61000-4-11:2-4+A1:2017

7. Where applicable, the above equipment will be tested and revision of existent certificate by WH Technology Corp. (TAF Accreditation Number:2954) for compliance With EMC requirements set forth in the EUROPEAN COUNCIL DIRECTIVE 2014/30/EU and the technical standards mentioned above. The results of testing in this report apply only to the product/system, which was tested. Other similar equipment will not necessarily produce the same results due to production tolerance.

8. The technical file is available from the manufacturer at the address above

Signed for and on behalf of:	UNiKA Electronic Co.,Ltd.
Place of issue:	Taipei
Date of issue:	May 03th , 2021

Signature: 

Name: Yung-Ho Hsu

Position: Marketing & Product director

## Documents / Resources

	<p><a href="#">UNiKA PROONE Pro Series Audio Interface Single Passive Direct Box</a> [pdf] User Manual PROONE, Pro Series Audio Interface Single Passive Direct Box</p>
---	---