



UNiKA PRO ONE Pro Series Audio Interface Single Passive Direct Box User Manual

[Home](#) » [UNiKA](#) » UNiKA PRO ONE Pro Series Audio Interface Single Passive Direct Box User Manual 

UNiKA

PROFESSIONAL AUDIO

PRO ONE Pro Series Audio Interface Single Passive Direct Box User Manual



Contents

- 1 GENERAL PRECAUTION BEFORE USE
- 2 PRODUCT OVERVIEW
- 3 PARAMETER TEST CONDITIONS
- 4 FEATURES
- 5 APPLICATIONS
- 6 APPEARANCE PARTS & FUNCTIONS
- 7 INPUT PAD ATTENUATION
- 8 ELIMINATING GROUND LOOP NOISE
- 9 CONNECTION GUIDE
- 10 CONNECTION GUIDE
- 11 SPECIFICATIONS
- 12 Documents / Resources
- 13 Related Posts

GENERAL PRECAUTION BEFORE USE

Thank you for purchasing the UNiKA PRO SERIES AUDIO INTERFACE. Before using it, please read this manual carefully and pay attention to every detail that you must pay attention to. If you use a mixer to connect to this interface, please turn off the mixer power and +48V phantom power before connecting, and then turn on the power and phantom power after inserting the signal cables. For passive models, please do not turn on the phantom power to avoid leakage or damage to the equipment.

If using a model with a volume knob, turn the volume knob to the minimum. During use, please do not plug or unplug the wires arbitrarily to avoid signal loss. Please refer to the following instructions for the soldering method of the plugs to ensure the expected level and keep the signal smooth.

If you need further installation or operation guidance, please directly contact UNiKA's dealer or distributor, or write to the following mail address for help:



info@unikapro.com

PRODUCT OVERVIEW

PRO USB is a passive DI box specially designed for mobile devices. It is compatible with Windows, Mac OSX, iOS, and Android systems. It does not require any drivers to achieve plug-and-play. It can be used as a signal impedance matcher for mobile devices and a built-in headphone amplifier and volume control.

PRO USB is the first to use TYPE-C as the terminal to connect to mobile phones and computers.

The USB audio decoder combines Com True CT-7601SR and Cirrus Logic CS-43131 to achieve 192KHz/32bit performance and is compatible with DSD digital formats and all common lossless and compressed music formats.

The PRO USB has a pair of built-in UNiKA-PRO EI9AE3R3 1.25:1

isolation transformer with a special coating and surrounded by an Oriental silicon steel shield which can ensure the high signal/noise ratio and dynamic sound of the device, and avoid unnecessary Leakage caused by radio frequency interference, grounding interference, and potential difference. PRO USB is especially suitable for mobile phones, computers, and media players. It converts high-impedance signals into low-impedance balanced signals, which is convenient for extending the wiring distance and blocking interference.

PRO USB has built-in mini TRS headphone monitor output and monitor volume control, which can drive 16Ω~600Ω headphones. TM



CAUTION

This product has undergone rigorous inspection before leaving the factory. If customers encounter failures during use, please contact your local dealer or distributor for replacement or repair, do not disassemble the case or replace parts by yourself, which will invalidate the warranty.

For details, please refer to the warranty regulations in the enclosed warranty card, fill in the details, and get a valid stamp or signature of the dealer or distributor.

PARAMETER TEST CONDITIONS

In the development and manufacturing process, Audio Precision's 2700 series and 500 series are used to test and verify electrical characteristics.

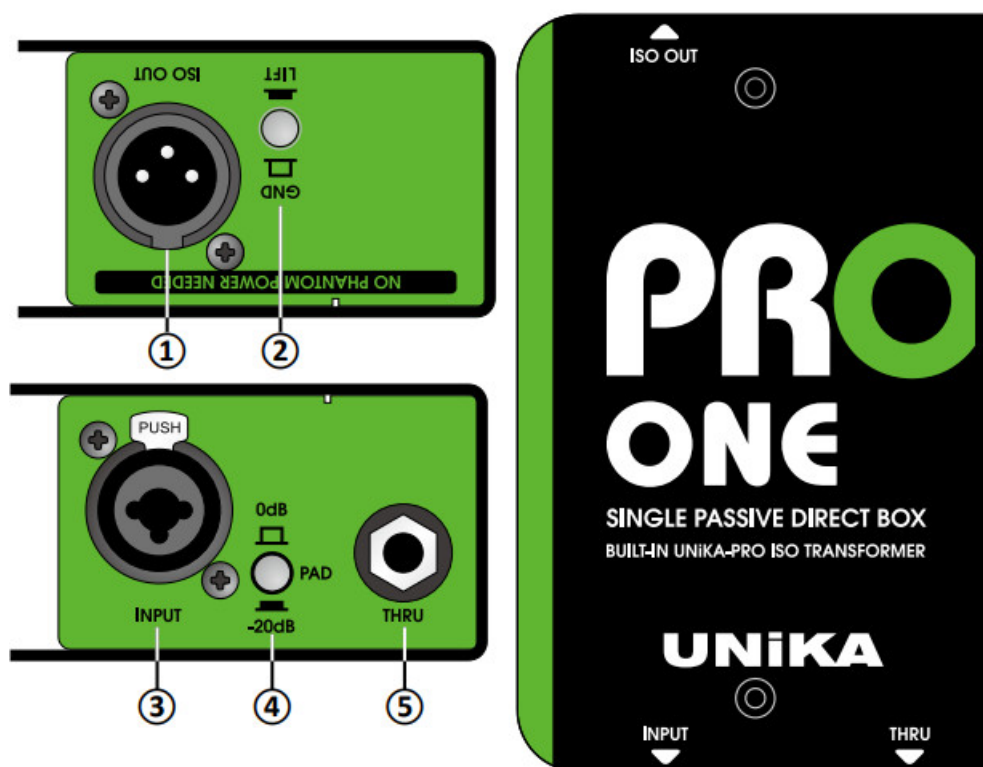
FEATURES

- Built-in UNiKA-PRO™ EI9AE3R3 isolation transformer
- The input socket uses a Combo jack
- Use TRS jack throughout our terminal
- There is 0dB/-20dB input signal attenuation switch
- The output is equipped with a GND/LIFT switch

APPLICATIONS

- Convert unbalanced signals of various audio equipment into balanced signals, such as the headphone or line output of computers, play deck,s or mobile devices.
- Convert the unbalanced signal of the electronic musical instrument into a balanced signal and send it to the mixer.
- Isolate the leakage and hum be generated by potential when two different systems are connected but powered by a separate power system or power generator.

APPEARANCE PARTS & FUNCTIONS



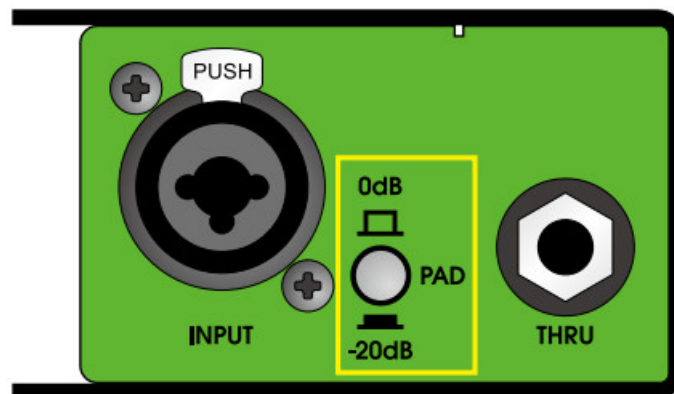
1. Signal output: XLR terminal, isolated balanced output of the Transformer.
2. Output grounding/floating switch: when the switch is not pressed, the first pin (PIN-1) of XLR is grounded. PIN-1 will be disconnected from the ground after pressing.

This button should depend on the system. Used in the situation, in order to isolate the ground loop noise or leakage.

3. Signal input: One combo jack be able to input balance and unbalance signal by TRS/TS and XLR plug.
4. PAD input attenuation switch: Provide 0/-20dB two options, when input signals of various impedances and levels. It can be attenuated by 20dB to avoid overload or clipping.
5. Signal throughout: Convenient for musicians' musical instrument speakers or other DI and peripheral equipment.

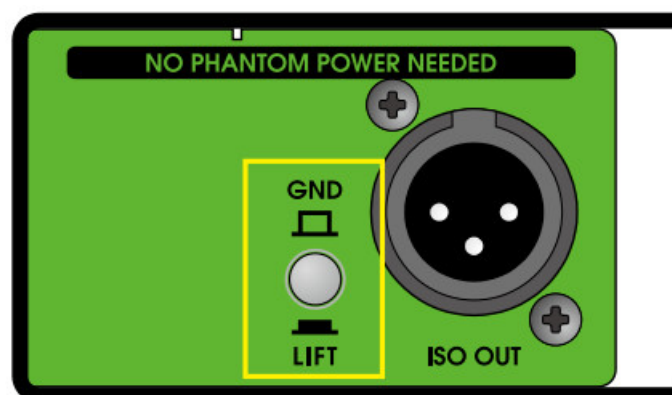
INPUT PAD ATTENUATION

The most widely used DI box is to connect electronic musical instruments, the sound sources of A/V equipment and computers, convert their output signals into balanced signals, and then extend the transmission distance. The most ideal state is to set the attenuator to a 0dB position (button up). For some high-level output signals, you can press the button to make the signal attenuated by 20dB to avoid clipping caused by signal overload. When the button is pressed, the PAD indicator on the right will light up.



ELIMINATING GROUND LOOP NOISE

The built-in channel independent balanced isolation transformer has solved the potential difference leakage problem. When the system causes a ground loop due to poor wiring, the noise can be eliminated through the GND/LIFT button.



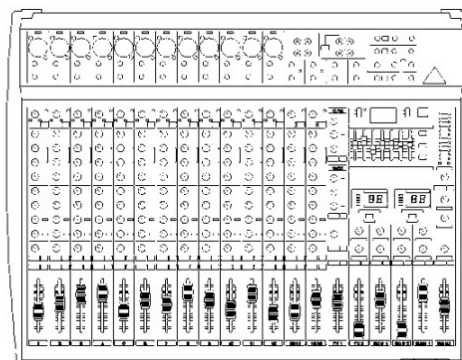
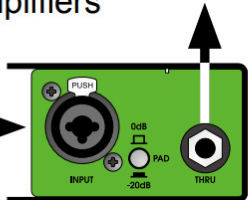
The GND/LIFT button determines whether pin 1 of the output XLR is grounded, grounded when it bounces, and disconnected from the ground when pressed.

CONNECTION GUIDE

Output from computer or musical instrument to INPUT



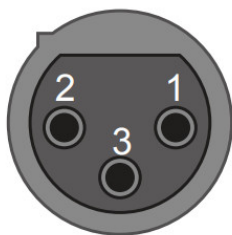
Output via THRU OUT to musical instrument amplifiers



Connect the balanced wire from ISO OUT to the mixer

CONNECTION GUIDE

XLR-Female connector

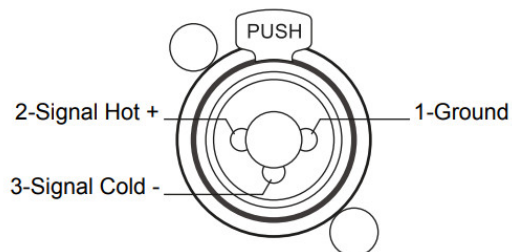


XLR-Male output jack



1-Shield pin 2-Hot pin 3-Cold pin

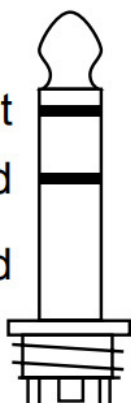
XLR-TRS Combo input



XLR-1/4"TRS Combo socket for direct input

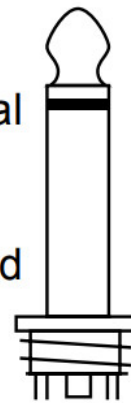
The unbalanced connection, pin-2 is hot, pin-3 is shield paralleled with pin-1.

Tip-Signal Hot
Ring-Signal Cold
Sleeve-Shield



TRS Balance plug

Tip-Signal
Sleeve-Shield



TS Unbalance plug

SPECIFICATIONS

(Specifications are subject to change without notice.)

PRO ONE	
Circuit principle	Passive/Transformer balance output
Input connector	1 x Combo
Thru connector	1 x TRS
Input pad switch	0/-20dB push button
Output connector	1 x Male XLR through ISO Transformer
Output GND/LIFT switch	Push button
Input impedance	10K Ω / 0dB & 12K Ω / -20dB
Output impedance	600 Ω
Max. input level before clipping	+22dB
Max Output level	+22dB
Frequency response	20Hz-20KHz, -0.3/+0dB
S/N ratio @20Hz~20KHz un-weight	>120dB
T.H.D. @1KHz 0dBV output	<0.02%
Transformer Ratio	1.25:1
Chassis	1.6mm/1.2mm steel cabinet and chassis
Surface finished	Durable complex painting
Dimension (W x D x H)	78 x 124 x 46 mm
Weight	0.55kg
Shipping weight	0.58kg
Packing per carton	20pc/12.20kg
Shipping dimension per carton	305 X 283 X 195 mm

UNiKA

PROFESSIONAL AUDIO

UNiKA Electronic Co., Ltd.

www.unikapro.com

6F, No.168, Xin-Hu 2nd Rd.
Nei-Hu District, Taipei City. 11494.
Taiwan, R.O.C.




+886 2 27933017



+886 2 27928264



info@unikapro.com

	<p>UNIKA PRO ONE Pro Series Audio Interface Single Passive Direct Box [pdf] User Manual PRO ONE, Pro Series, Audio Interface Single Passive Direct Box, PRO ONE, Pro Series Audio Interface Single Passive Direct Box, PRO ONE Pro Series Audio Interface Single Passive Direct Box</p>
---	---