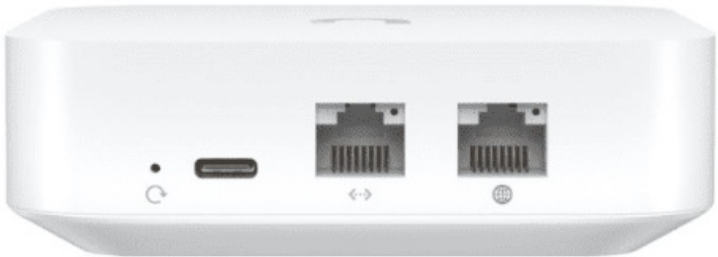


**Contents** [ [hide](#) ]

- [1 UniFi UX7-QIG-2 WiFi 7 Cloud Gateway](#)
- [2 Specifications](#)
- [3 Overview](#)
- [4 Installation Steps](#)
- [5 FAQ](#)
- [6 Documents / Resources](#)
  - [6.1 References](#)

# UniFi

## UniFi UX7-QIG-2 WiFi 7 Cloud Gateway

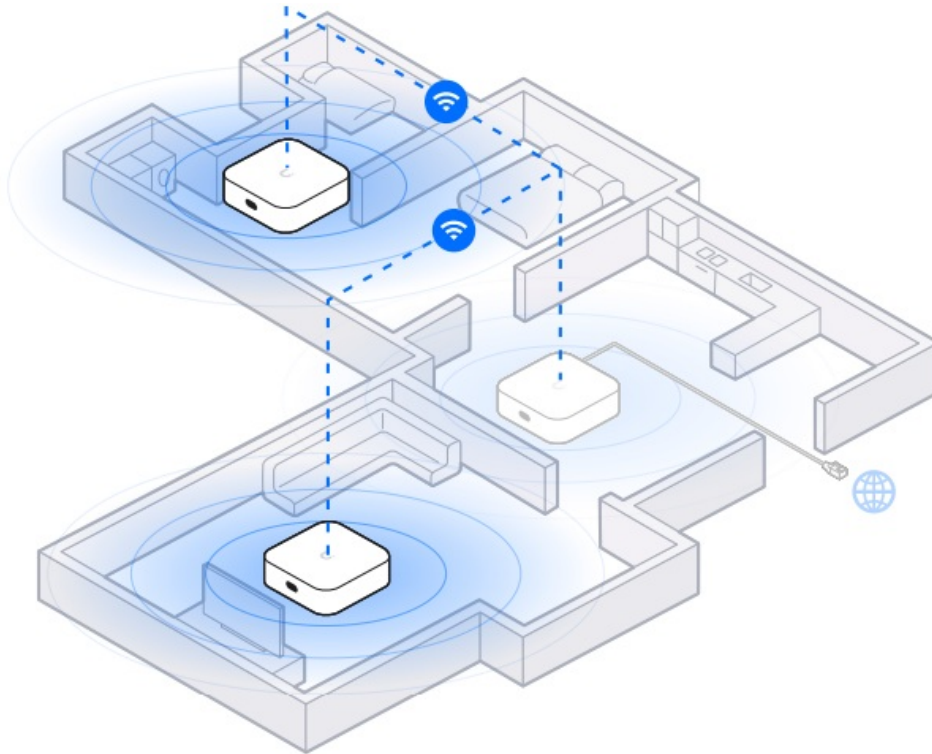


### Specifications

Component	Description
Device	UniFi Access Point
Power	Power Adapter Included
Connectivity	Ethernet Cable Included

## Overview

This guide provides step-by-step instructions to set up your UniFi device for optimal performance in your home or office environment.



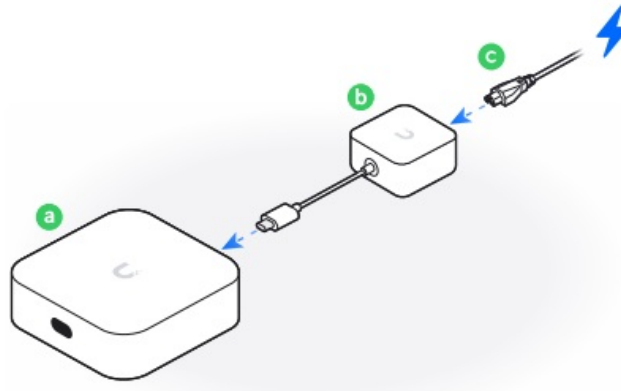
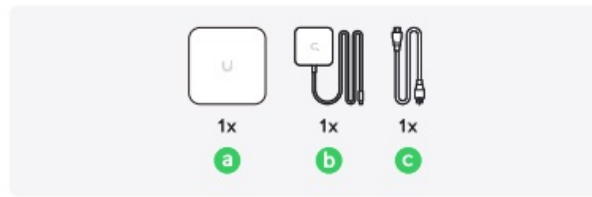
## Installation Steps

### Step 1: Unboxing

In the box, you will find the following items:

- **a:** UniFi Device (1x)
- **b:** Power Adapter (1x)
- **c:** Ethernet Cable (1x)

# 1

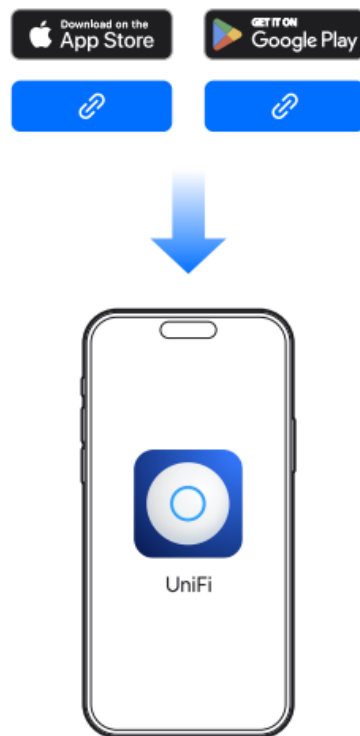


## Step 2: Connecting the Device

Follow these steps to connect your device:

1. Connect the Ethernet cable (c) to the UniFi device (a).
2. Plug the other end of the Ethernet cable into your router or modem.
3. Connect the power adapter (b) to the UniFi device and plug it into a power outlet.

# 2

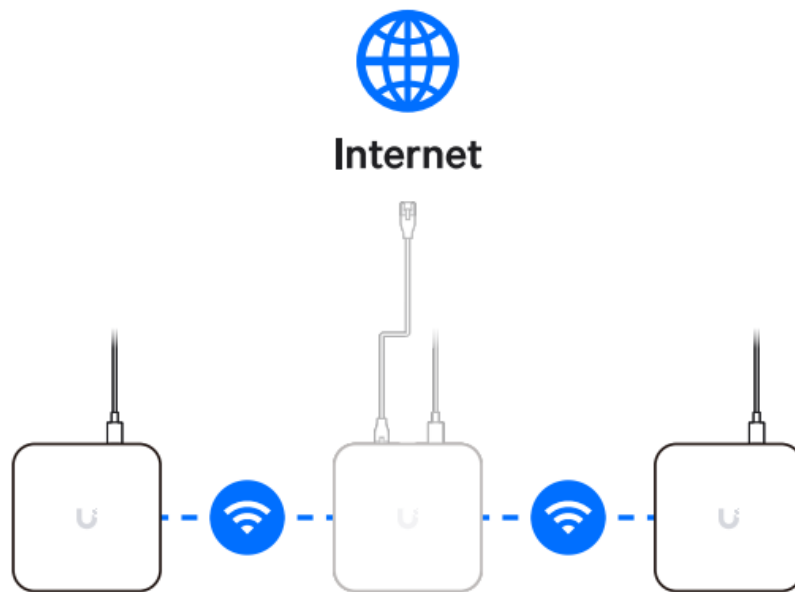


## Step 3: Software Setup

Download the UniFi app from the App Store or Google Play:

- App Store
- Google Play

# 3



Open the UniFi app on your smartphone and follow the on-screen instructions to complete the setup.

If you need further assistance, visit our [Help Center](#) or contact UniFi Support.

## FAQ

### 1. How do I reset my UniFi device?

Press and hold the reset button on the device for 10 seconds until the LED flashes.

### 2. Where can I find more support?

Visit the [UniFi Help Center](#) or contact Ubiquiti Support.

### 3. Can I use multiple UniFi devices?

Yes, you can connect multiple devices to extend your network coverage.

## Documents / Resources



## [UniFi UX7-QIG-2 WiFi 7 Cloud Gateway \[pdf\]](#) User Guide

UX7-QIG-2, UX7-QIG-2 WiFi 7 Cloud Gateway, WiFi 7 Cloud Gateway, Gateway

## References

- [User Manual](#)

gateway, Unifi, UX7-QIG-2, UX7-QIG-2 WiFi 7 Cloud Gateway, WiFi 7 Cloud

Unifi Gateway

## Leave a comment

Your email address will not be published. Required fields are marked \*

Comment \*

Name

Email

Website

☐ Save my name, email, and website in this browser for the next time I comment.

**Post Comment**

## Search:

e.g. whirlpool wrf535swhz

**Search**

[Manuals+](#) | [Upload](#) | [Deep Search](#) | [Privacy Policy](#) | [@manuals.plus](#) | [YouTube](#)

This website is an independent publication and is neither affiliated with nor endorsed by any of the trademark owners. The "Bluetooth®" word mark and logos are registered trademarks owned by Bluetooth SIG, Inc. The "Wi-Fi®" word mark and logos are registered trademarks owned by the Wi-Fi Alliance. Any use of these marks on this website does not imply any affiliation with or endorsement.