



FLEX25G5 Flex  
Mini Desktop 2.5G  
Smart Switch



# UniFi FLEX25G5 Flex Mini Desktop 2.5G Smart Switch Instructions

[Home](#) » [Unifi](#) » UniFi FLEX25G5 Flex Mini Desktop 2.5G Smart Switch Instructions 

## Contents

- [1 UniFi FLEX25G5 Flex Mini Desktop 2.5G Smart Switch](#)
- [2 Overview](#)
- [3 Setup Instructions](#)
- [4 Specifications](#)
- [5 Support](#)
- [6 FAQs](#)
- [7 Documents / Resources](#)
  - [7.1 References](#)

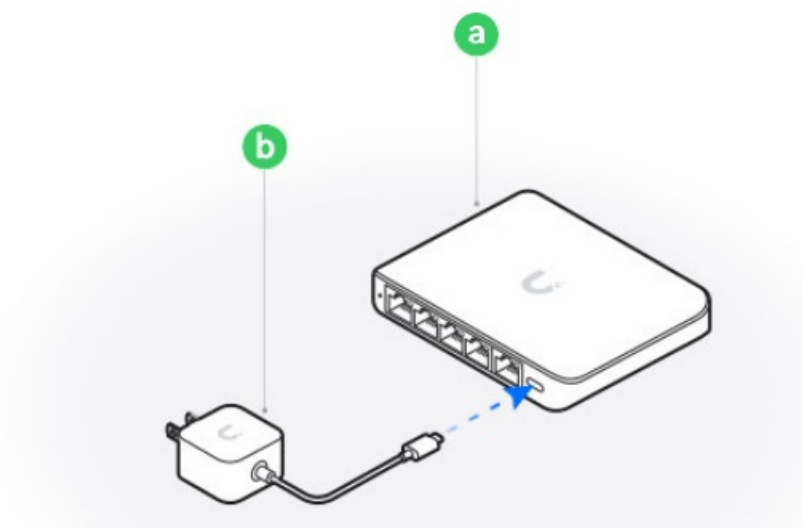
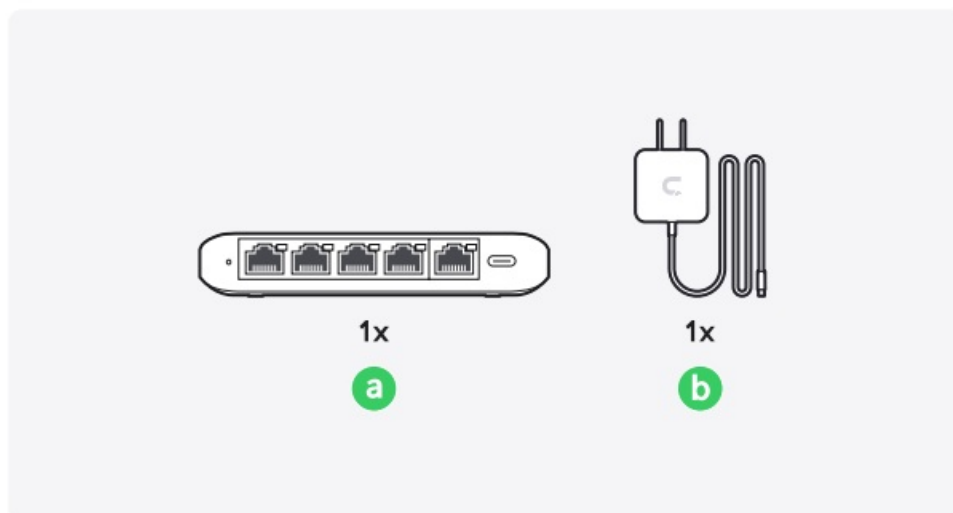


UniFi FLEX25G5 Flex Mini Desktop 2.5G Smart Switch



## Overview

This document provides instructions for setting up the Ubiquiti Flex 2.5G 5 device, including connection and configuration steps.



## Setup Instructions

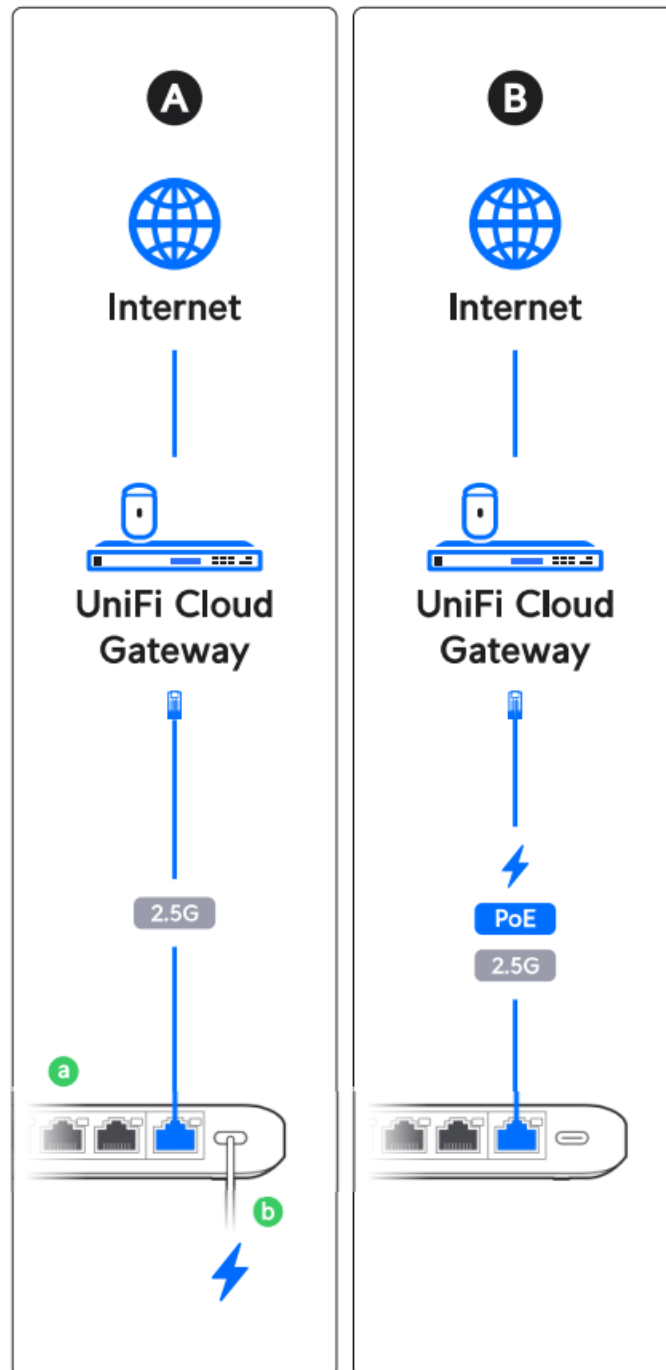
### Step 1: Hardware Connection

#### 1. Connect the Power Supply

- Plug the power adapter into the device and connect it to a power outlet.

#### 2. Network Connection

- Connect the device to your network using an Ethernet cable.



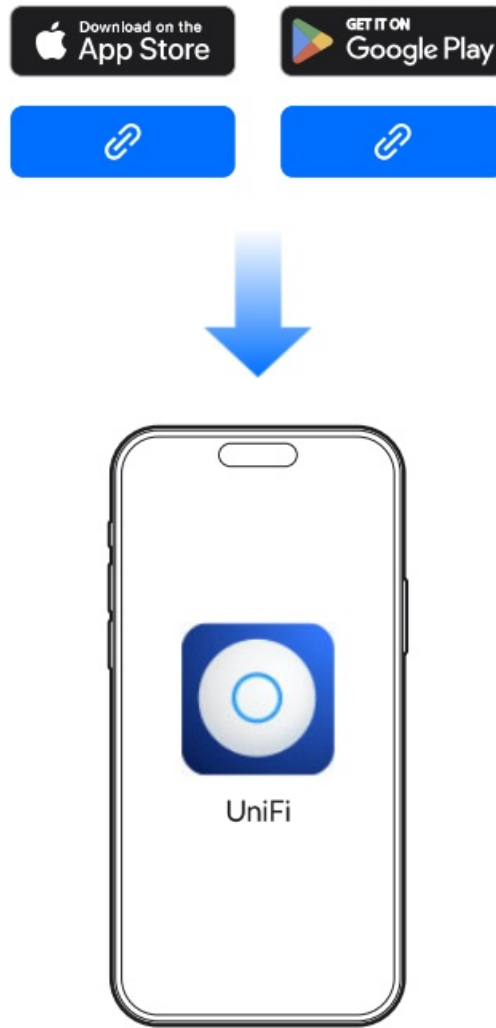
### Step 2: Network Configuration

#### 1. Option A: Direct Connection

- Connect the device directly to the internet via the UniFi Cloud Gateway using the 2.5G port.

#### 2. Option B: PoE Connection

- Connect the device to the internet via the UniFi Cloud Gateway using a PoE (Power over Ethernet) connection on the 2.5G port.



### Step 3: Software Setup

- Download the UniFi app from the App Store or Google Play Store.
- Install the app on your mobile device and follow the on-screen instructions to complete the setup.

### Specifications

Feature	Details
Model	Flex 2.5G 5
Ports	2.5G Ethernet
Power	Power Adapter / PoE

### Support

- If you need further assistance, please visit our [support page](#).
- Note: All specifications are subject to change without notice. Please refer to the official website for the most up-

to-date information.

©2024 Ubiquiti Inc. All rights reserved. Ubiquiti, the Ubiquiti U logo, and UniFi are trademarks or registered trademarks of Ubiquiti Inc. in the United States and in other countries. Apple and the Apple logo are trademarks of Apple Inc. registered in the US, and other countries, App Store is a service mark of Apple Inc. registered in the U.S. and other countries, Android, Google, Google Play, and the Google Play logo are trademarks of Google LLC

## FAQs

### What is the UniFi Cloud Gateway?

The UniFi Cloud Gateway is a device that connects your network to the internet, allowing for remote management and monitoring.

### How do I download the UniFi app?

You can download the UniFi app from the App Store for iOS devices or the Google Play Store for Android devices.

### Can I use PoE to power the device?

Yes, the device supports Power over Ethernet (PoE) for power supply.

## Documents / Resources

	<p><a href="#">UniFi FLEX25G5 Flex Mini Desktop 2.5G Smart Switch</a> [pdf] Instructions</p> <p>FLEX25G5 Flex Mini Desktop 2.5G Smart Switch, FLEX25G5, Flex Mini Desktop 2.5G Smart Switch, Desktop 2.5G Smart Switch, Smart Switch, Switch</p>
--	--

## References

- [User Manual](#)

[Manuals+](#), [Privacy Policy](#)

This website is an independent publication and is neither affiliated with nor endorsed by any of the trademark owners. The "Bluetooth®" word mark and logos are registered trademarks owned by Bluetooth SIG, Inc. The "Wi-Fi®" word mark and logos are registered trademarks owned by the Wi-Fi Alliance. Any use of these marks on this website does not imply any affiliation with or endorsement.