

unidrain®
Unidrain V03
Highline Custom



Unidrain V03 Highline Custom Installation Guide

[Home](#) » [unidrain](#) » Unidrain V03 Highline Custom Installation Guide 

Contents

- [1 Unidrain V03 Highline Custom](#)
- [2 Product Usage Instructions](#)
- [3 Installation](#)
- [4 Documents / Resources](#)
 - [4.1 References](#)
- [5 Related Posts](#)

unidrain®

Unidrain V03 Highline Custom



Specifications

- Product Model: V03
- Installation Guide: Highline Custom
- Country Codes: UK, DK, SE, NO, CZ, FI

Product Usage Instructions

1. Refer to the respective country code section for installation guidelines.
2. Ensure the minimum and maximum measurements are met as indicated in the manual.
3. Use the specified screws and dimensions for each component during installation.

Maintenance

Regularly clean the product with a mild detergent and water.
Avoid using abrasive cleaners to prevent damage.

Troubleshooting

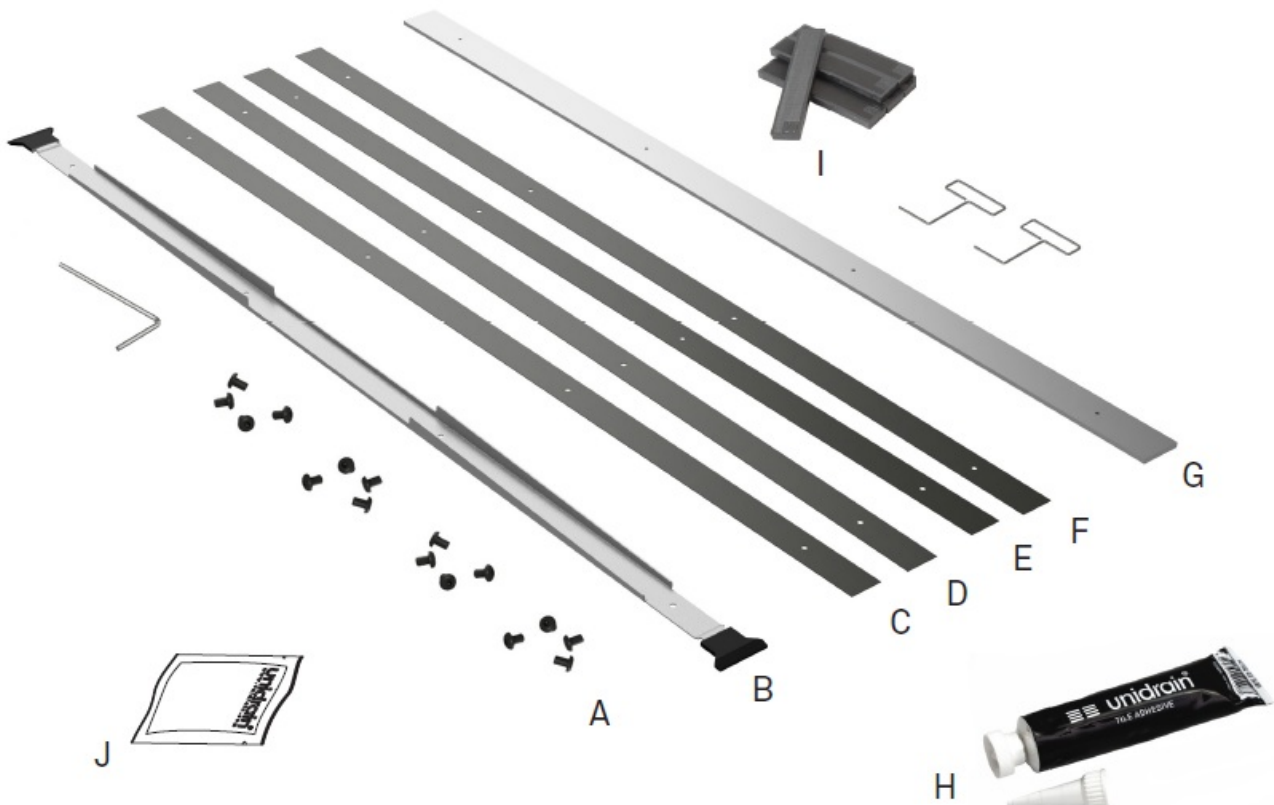
If you encounter any issues during installation or usage, refer to the troubleshooting section of the manual or contact customer support.

FAQ

Q: What should I do if the product doesn't fit properly during installation?

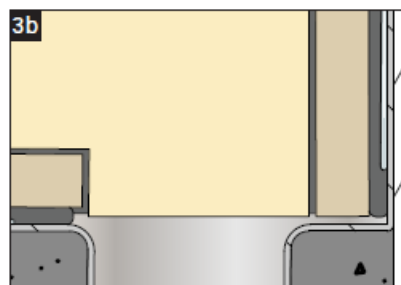
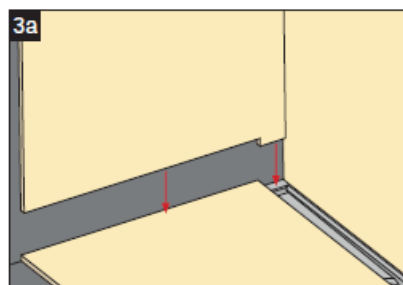
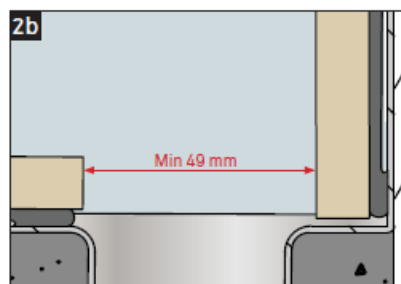
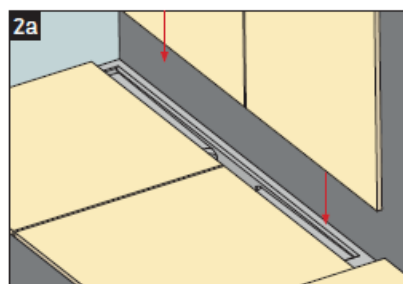
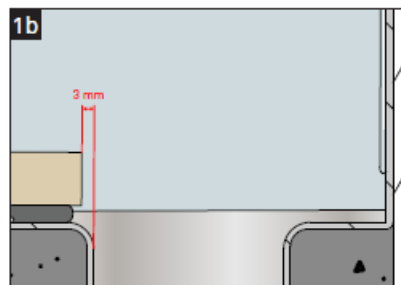
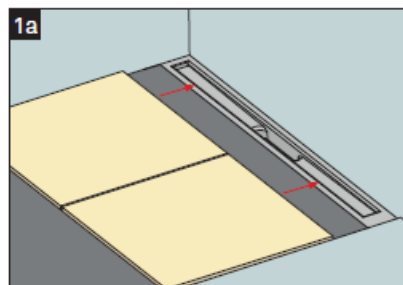
A: Double-check the measurements and ensure all components are aligned correctly. If the issue persists, contact customer support for assistance.

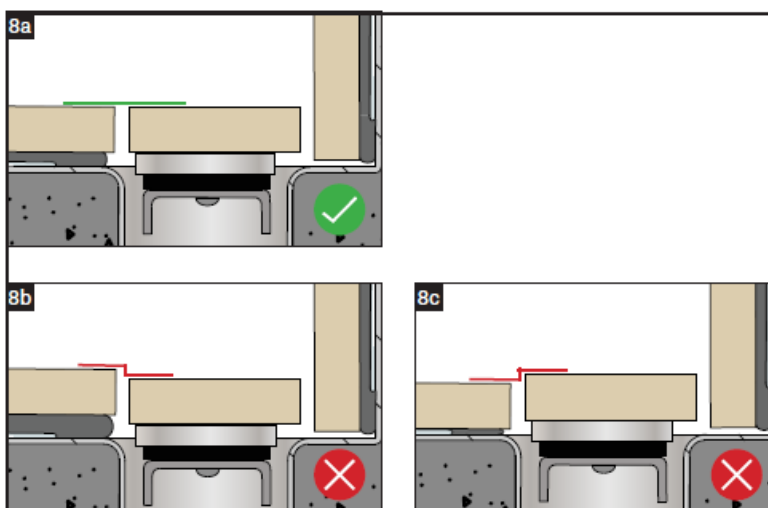
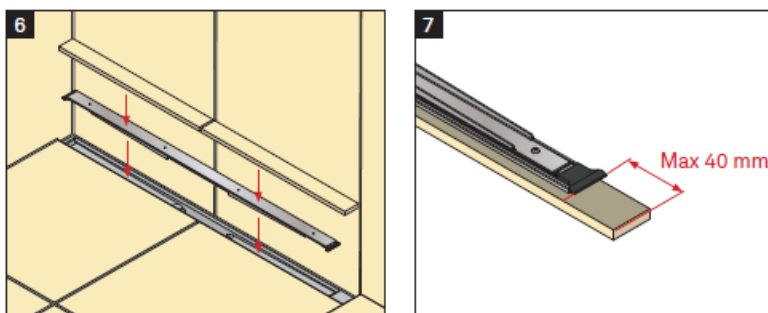
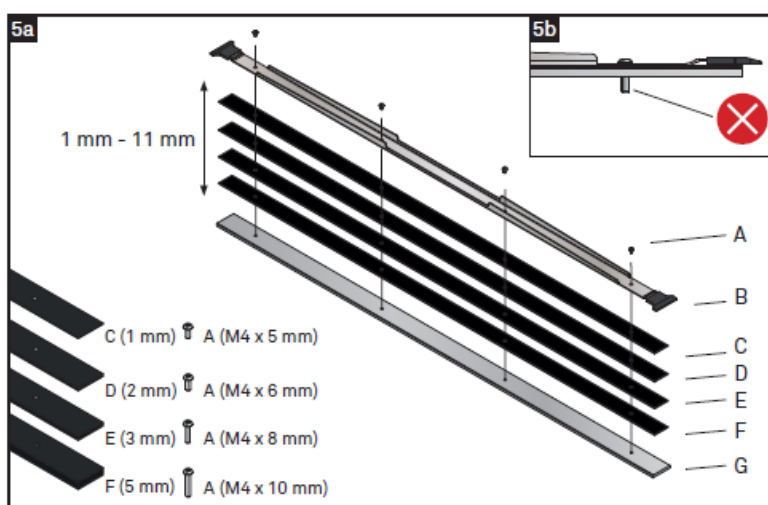
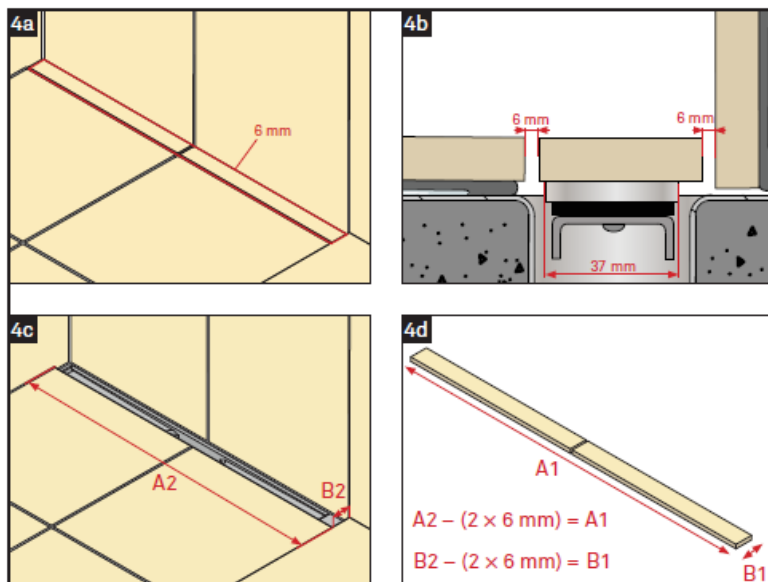
Installation

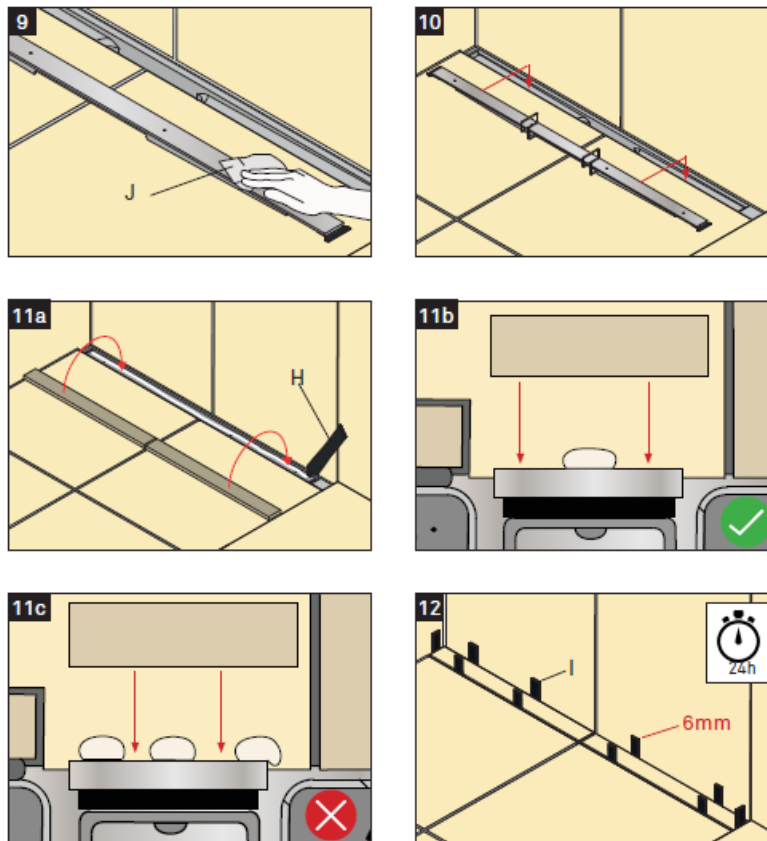


Included in the package

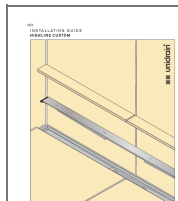
- A Screws
- B Rail
- C Riser 1 mm
- D Riser 2 mm
- E Riser 3 mm
- F Riser 5 mm
- G Custom base
- H Grab adhesives
- I Spacers 6 mm
- J Rengøringserviet







Documents / Resources



[Unidrain V03 Highline Custom](#) [pdf] Installation Guide
V03, V03 Highline Custom, V03, Highline Custom, Custom

References

- [Unidrain → Design and Functionality in the Modern Bath](#)
- [User Manual](#)

[Manuals+.](#) [Privacy Policy](#)

This website is an independent publication and is neither affiliated with nor endorsed by any of the trademark owners. The "Bluetooth®" word mark and logos are registered trademarks owned by Bluetooth SIG, Inc. The "Wi-Fi®" word mark and logos are registered trademarks owned by the Wi-Fi Alliance. Any use of these marks on this website does not imply any affiliation with or endorsement.