



**PSU1 Direct
Fixing Projector
Suspension
Unit**



UNICOL PSU1 Direct Fixing Projector Suspension Unit Installation Guide

[Home](#) » [UNICOL](#) » UNICOL PSU1 Direct Fixing Projector Suspension Unit Installation Guide 

Contents

- [1 UNICOL PSU1 Direct Fixing Projector Suspension Unit](#)
- [2 Product Information](#)
- [3 Product Usage Instructions](#)
- [4 COMPONENTS](#)
- [5 ASSEMBLY](#)
- [6 Frequently Asked Questions](#)
- [7 Documents / Resources](#)
 - [7.1 References](#)
- [8 Related Posts](#)



UNICOL PSU1 Direct Fixing Projector Suspension Unit



Product Information

Specifications

- **Product Models:** PSU1, PSU2, PSC, PPSU, VSU
- **Max. Weight Capacity:** 40-70kg
- **Tools Required:** 4mm & 5mm Allen Keys, 13mm Spanner, 17mm Spanner

Components

Description	Quantity
PSU1 – Socket & Bar Assembly	–

Product Usage Instructions

Step 1: Installation

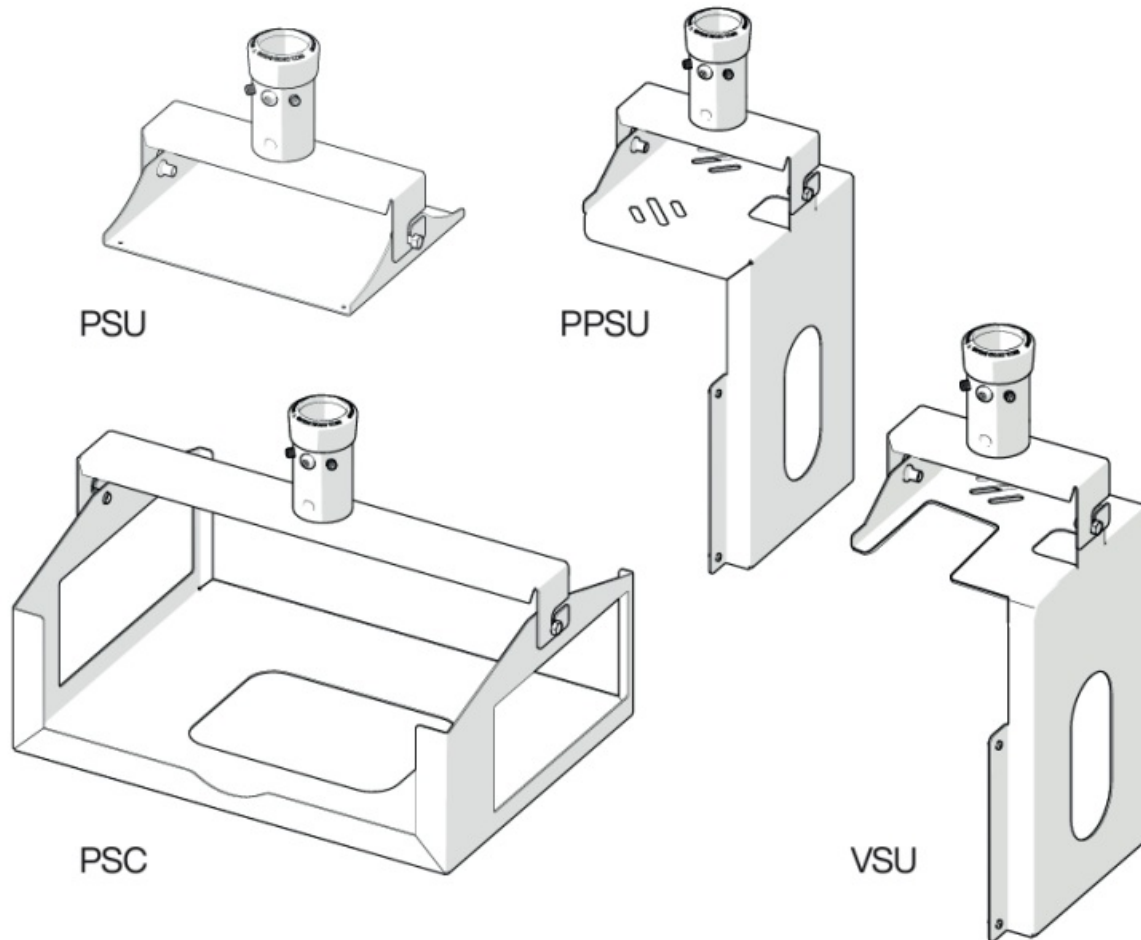
- **PSU1/2:** Fix the lower part of the PSU to the fixing holes of the inverted projector using the provided fixing screws.
- **PSC:** Rest the projector on its feet in the base of the cradle designed for the specific projector ordered.
- **PPSU:** Fix the lower part of the PPSU to the fixing holes of the projector, on its side, with the lens pointing horizontally.
- **VSU:** Fix the lower part of the VSU to the fixing holes of the projector, on its side, with the lens pointing downward.

Step 2: Assembly

Align the socket with the column or peg and thread cables through. Insert throughbolt and tighten. Hook the lower part with projector over the screws and set tilt angles before tightening.

- **Safety Note:** Use safety throughbolts to secure the PSU. Grub screws help remove slack in the joint.
- **Caution:** Beware of stretching cables when adjusting angles.

MODELS



Guide Max. Weight: 40-70kg

Please check model specific details before installing

WARNING

Please carefully inspect the product before assembling. If you notice any apparent damage, call your carrier claims agent and do not continue the installation until it has been reviewed. Please watch for pinch points. Do not put your fingers between moveable parts. Do not tamper with or disassemble any spring loaded parts. Before installing, make sure that the supporting surface will support five times the combined load of the solution and the hardware. Never exceed the maximum load capacity. Please also layout all components to ensure that you have all of the required parts before proceeding (see BOM list on following page). Use of this product for anything other than its specified use may result in failure or personal injury. This product is intended for indoor use only.

We recommend using a qualified trades person for installation. Use an assistant or lifting equipment to lift and position products.

For support, please call: +44 (0)1865 767676 or email: sales@unicol.com

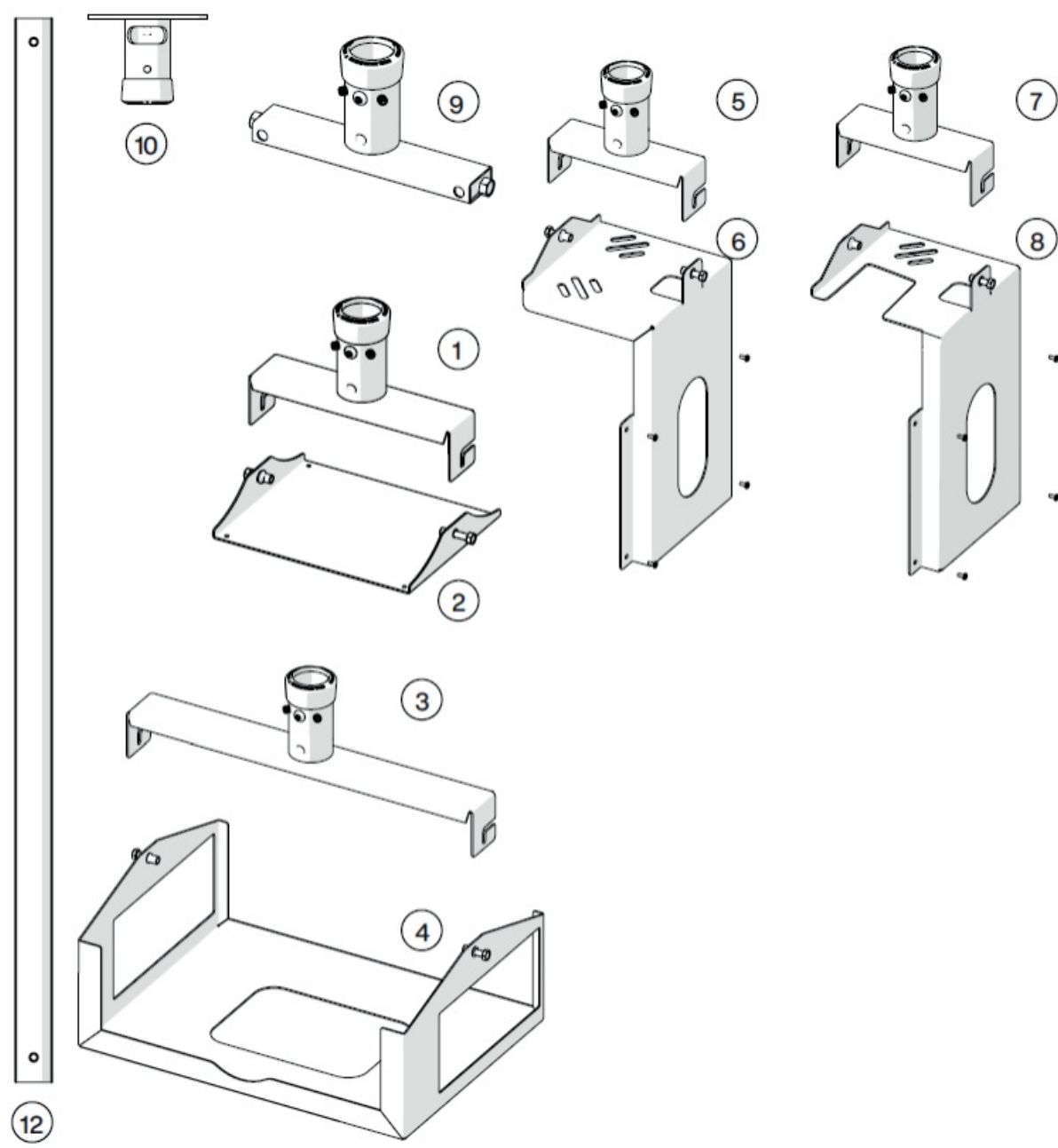
TOOLS REQUIRED

#	TOOLS REQUIRED
1	4mm & 5mm Allen Keys
2	13mm Spanner
3	17mm Spanner

INSTALLERS REQUIRED

1-2

COMPONENTS



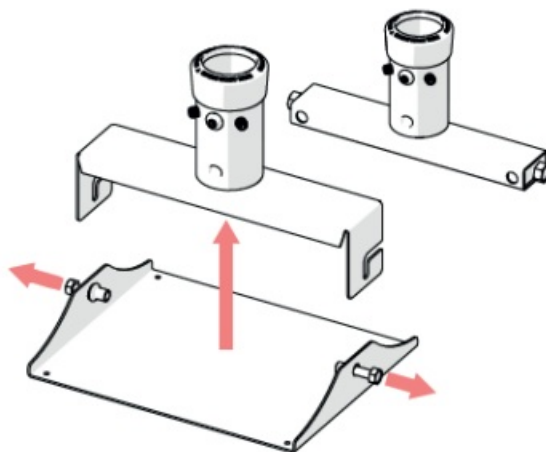
#	DESCRIPTION	QTY
1	PSU1 – Socket & Bar Assembly	–
2	PSU1/2 – Dedicated Fixing Plate (Example)	–
3	PSC – Socket & Bar Assembly	–
4	PSC – Dedicated Projector Cradle (Example)	–
5	PPSU – Socket & Bar Assembly	–
6	PPSU – Dedicated Projector Plate (Example)	–
7	VSU – Socket & Bar Assembly	–
8	VSU – Dedicated Projector Plate (Example)	–
9	PSU2 – Alternative Heavy duty T-Bar	–
10	CP1 – Standard Ceiling Plate (Example)	–
11	Dedicated Projector Fixing Screw Pack	–
12	Column Length	–

ASSEMBLY

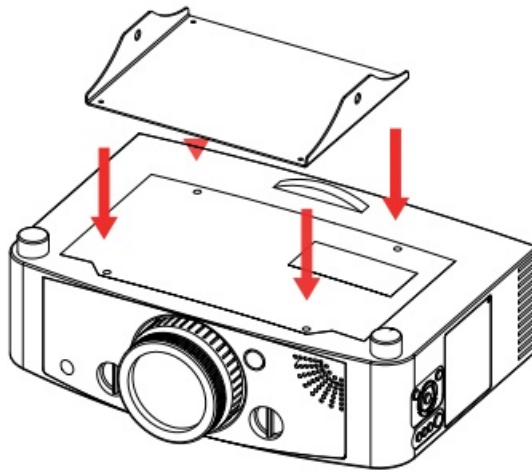
STEP 1 (ALL)

Loosen the 2 x Hex M8 or M10 hex screws and disconnect the upper and lower parts of the mount.

The upper part of these mounts generally fit onto a column or peg connected to a ceiling plate or wall arm. The lower part fixes to a projector. Cables run through column or peg and sockets to projector.

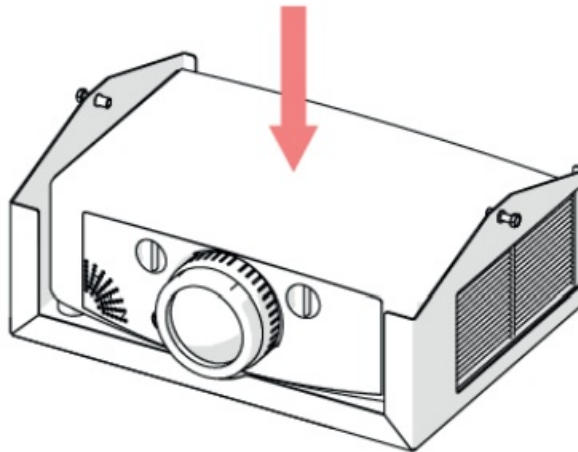


PSU1/2



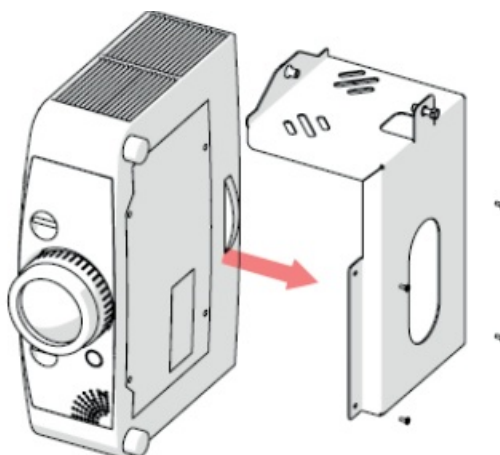
Using the fixing screws provided fit the lower part of the PSU to the fixing holes of the inverted projector.
The plate fixing to the projector is designed specifically for the projector ordered so may look differently to the one shown.

PSC



Rest the projector on its feet in the base of the cradle.
Each cradle is manufactured to suit the projector you have ordered the mount for. Balance and ventilation is taken into account within the design.

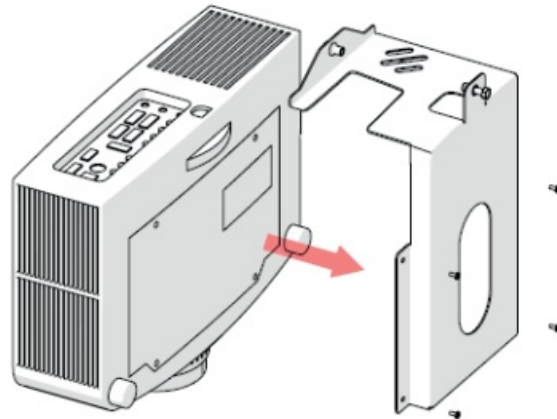
PPSU



Using the fixing screws provided fit the lower part of the PPSU to the fixing holes of the projector, on its side, lens pointing horizontally.

The plate fixing to the projector is designed specifically for the projector ordered so may look differently to the one shown.

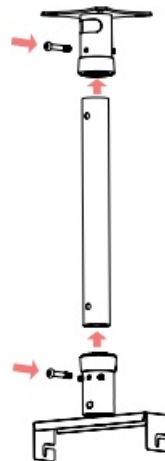
VSU



Using the fixing screws provided fit the lower part of the VSU to the fixing holes of the projector, on its side, lens pointing downward.

The plate fixing to the projector is designed specifically for the projector ordered so may look differently to the one shown.

CEILING SUSPENSION



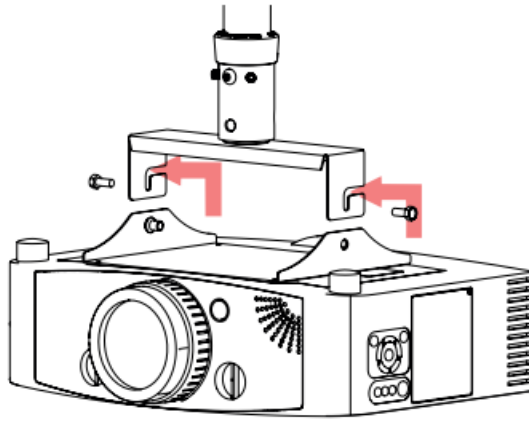
Remove throughbolt in upper part of bar assembly socket and loosen grub screws. Align socket with column or peg. Thread cables through socket. Insert throughbolt and tighten. Tighten grub screws.

Safety throughbolts must be used to secure the PSU. Grub screws are used to remove slack in the joint.

STEP 2 (ALL)

Hook lower part with projector over the 2 x M8/M10 hex screws. Cable up projector and set tilt angles then tighten M8/M10 hex screws. Set rotation angle by turning projector either way to finish installation.

Beware of stretching cables when adjusting angles.



01865 767676

sales@unicol.com

www.unicol.com



Frequently Asked Questions

Q: What should I do if I encounter difficulties during installation?

A: If you face any challenges during installation, please contact our support team at +44 (0)1865 767676 or email us at sales@unicol.com for assistance.

Documents / Resources

	<p>UNICOL PSU1 Direct Fixing Projector Suspension Unit [pdf] Installation Guide PSU1, PSU2, PSC, PPSU, VSU, PSU1 Direct Fixing Projector Suspension Unit, Direct Fixing Projector Suspension Unit, Fixing Projector Suspension Unit, Projector Suspension Unit, Suspension Unit</p>
	<p>UNICOL PSU1 Direct Fixing Projector Suspension Unit [pdf] Installation Guide PSU1, PSU2, PSC, PPSU, VSU, PSU1 Direct Fixing Projector Suspension Unit, Direct Fixing Projector Suspension Unit, Fixing Projector Suspension Unit, Projector Suspension Unit, Suspension Unit</p>

References

- [User Manual](#)

[Manuals+](#), [Privacy Policy](#)

This website is an independent publication and is neither affiliated with nor endorsed by any of the trademark owners. The "Bluetooth®" word mark and logos are registered trademarks owned by Bluetooth SIG, Inc. The "Wi-Fi®" word mark and logos are registered trademarks owned by the Wi-Fi Alliance. Any use of these marks on this website does not imply any affiliation with or endorsement.