



**PSU Direct Fixing
Projector Suspension**



UNICOL PSU Direct Fixing Projector Suspension Unit Instructions

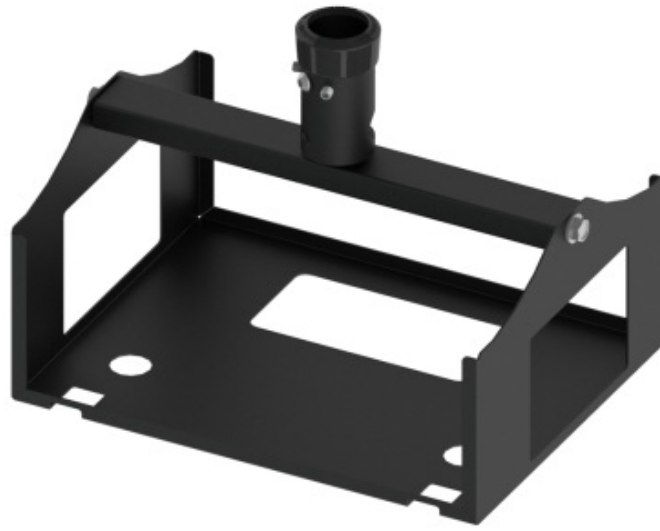
[Home](#) » [UNICOL](#) » UNICOL PSU Direct Fixing Projector Suspension Unit Instructions 

Contents

- [1 UNICOL PSU Direct Fixing Projector Suspension](#)
- [2 Product Information](#)
- [3 Product Usage Instructions](#)
- [4 FAQ](#)
- [5 TOOLS REQUIRED](#)
- [6 COMPONENTS](#)
- [7 Installation Instructions](#)
- [8 CONTACT](#)
- [9 Documents / Resources](#)
 - [9.1 References](#)
- [10 Related Posts](#)



UNICOL PSU Direct Fixing Projector Suspension



Product Information

Specifications

- **Max. Projector Weight:** 60kg

Product Usage Instructions

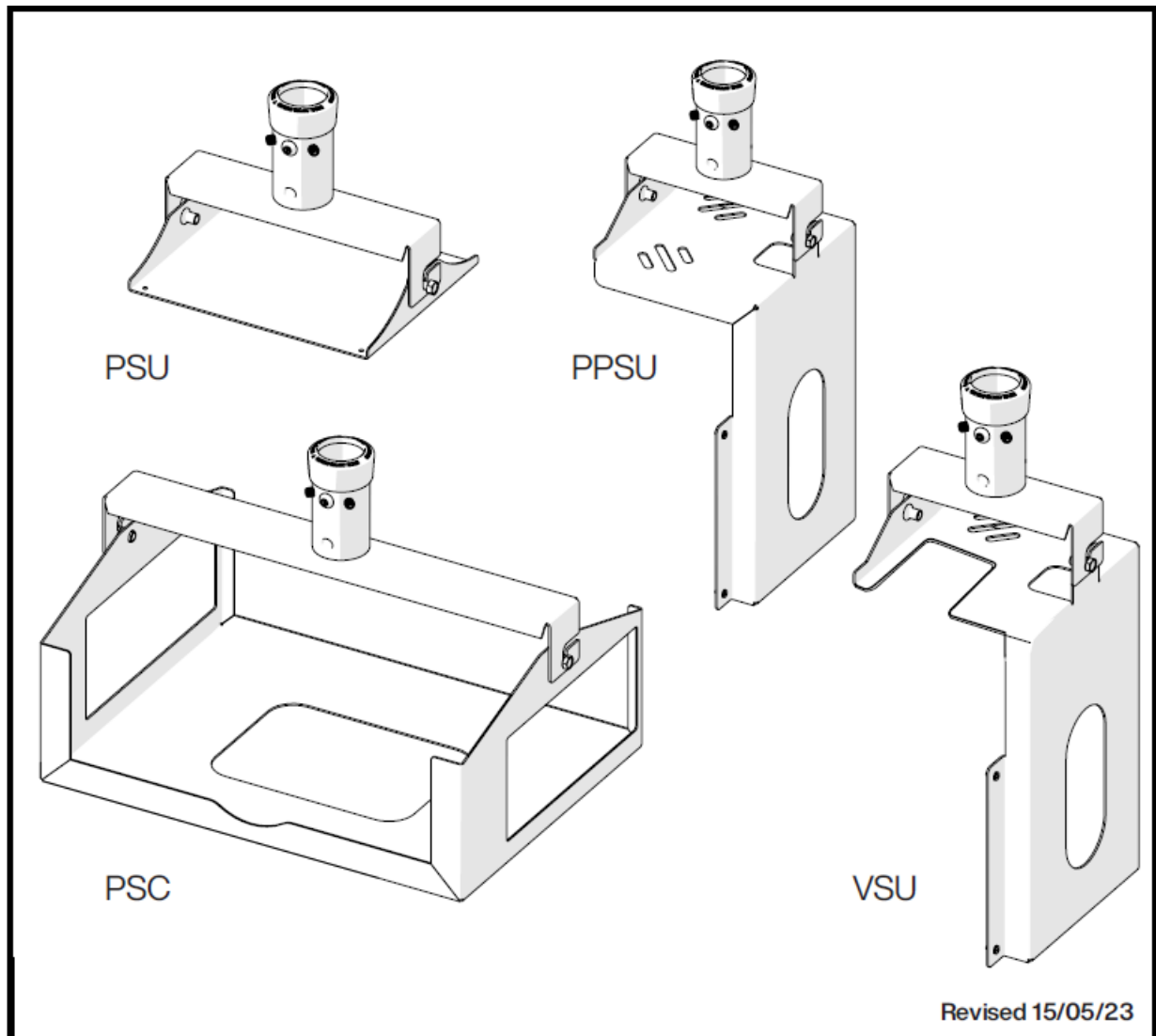
- Loosen the Hex screws and disconnect the upper and lower parts of the PSU.
- The upper part (T-Bar) fits to a column or peg connected to a ceiling plate or wall arm.
- The lower part fixes to an inverted projector.
- Cables run through the column or peg and sockets to the projector.
- Fit the lower part of the PSU to the fixing holes of the inverted projector using the provided fixing screws.
- Loosen the Hex screws and disconnect the upper and lower parts of the PSC.
- The upper part (T-Bar) fits to a column or peg connected to a ceiling plate or wall arm.
- The lower part acts as a cradle to house the projector.
- Cables run through the column or peg and sockets to the projector.
- Rest the projector on its feet in the base of the cradle.
- Loosen the Hex screws and disconnect the upper and lower parts of the PPSU.
- The upper part fits to a column or peg connected to a ceiling plate or wall arm.
- The lower part fixes to a projector on its side. Cables run through the column or peg and sockets to the projector.
- Fit the lower part of the PPSU to the fixing holes of the projector, on its side, with the lens pointing horizontally.
- Loosen the Hex screws and disconnect the upper and lower parts of the VSU.
- The upper part fits to a column or peg connected to a ceiling plate or wall arm.
- The lower part fixes to a projector on its side. Cables run through the column or peg and sockets to the projector.
- Fit the lower part of the VSU to the fixing holes of the projector, on its side, with the lens pointing downward.

FAQ

- **Q:** Can I use this mount for projectors heavier than 60kg?

- **A:** It is not recommended to exceed the specified maximum weight limit of 60kg for this mount. Please check model-specific details before installing.

PSU / PSC / PPSU / VSU



- Guide Max. Projector Weight: 60kg

Please check model-specific details before installing

WARNING

- Please carefully inspect the product before assembling it.
- If you notice any apparent damage, call your carrier claims agent and do not continue the installation until it has been reviewed.
- Please watch for pinch points. Do not put your fingers between moveable parts.
- Do not tamper with or disassemble any spring-loaded parts.
- Before installing, make sure that the supporting surface will support five times the combined load of the solution and the hardware.
- Never exceed the maximum load capacity.
- Please also lay out all components to ensure that you have all of the required parts before proceeding (see the

BOM list on the following page).

- Use of this product for anything other than its specified use may result in failure or personal injury.
- This product is intended for indoor use only. We recommend using a qualified tradesperson for installation.
- Use an assistant or lifting equipment to lift and position products.
- For support, please call: +44 (0)1865 767676 or email: sales@unicol.com

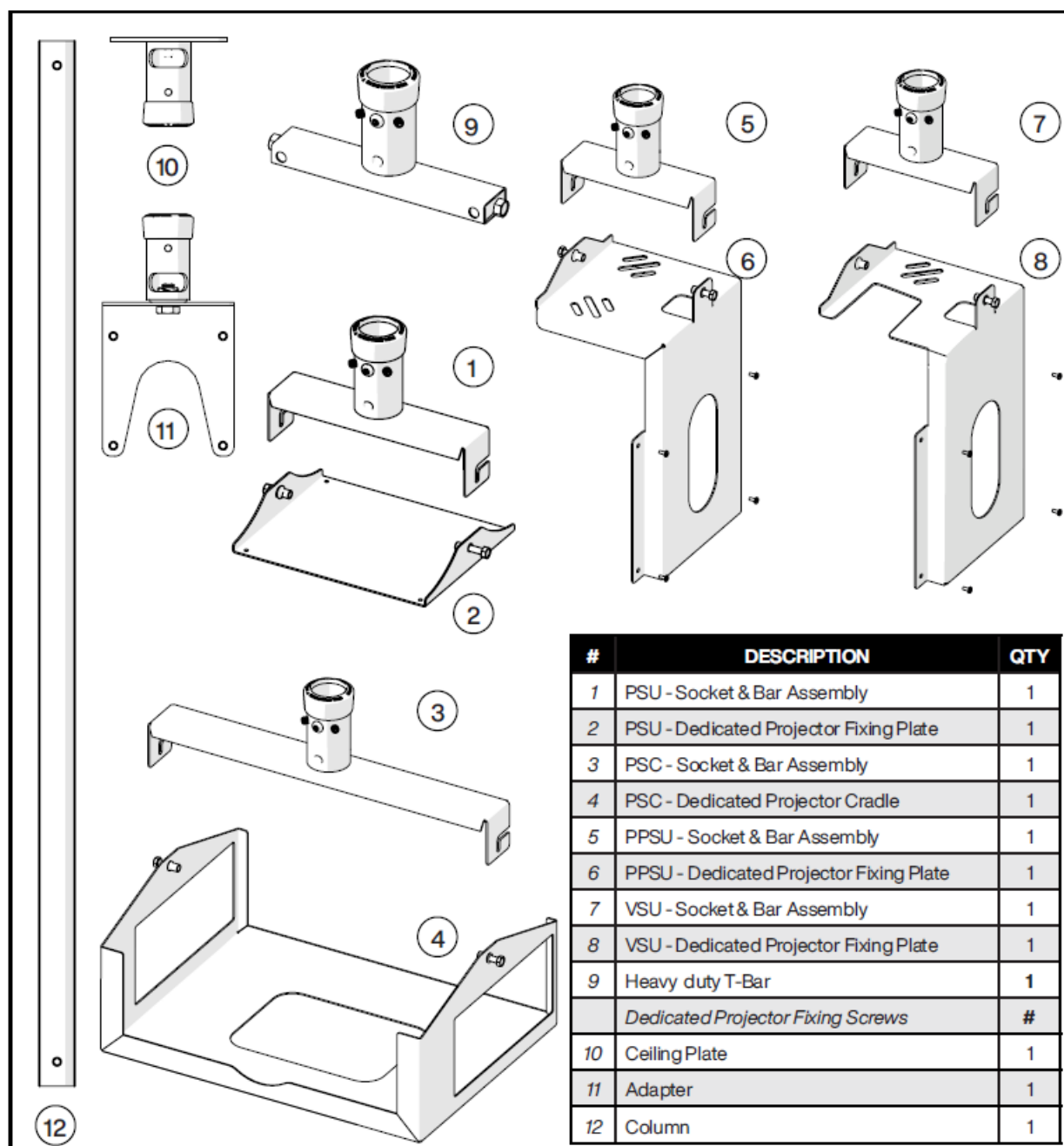
TOOLS REQUIRED

1. 3/16th Allen Key
2. 13mm Spanner (for M8)
3. 17mm Spanner (for M10)
4. Pozidrive Screwdriver

INSTALLERS REQUIRED

- 1-2

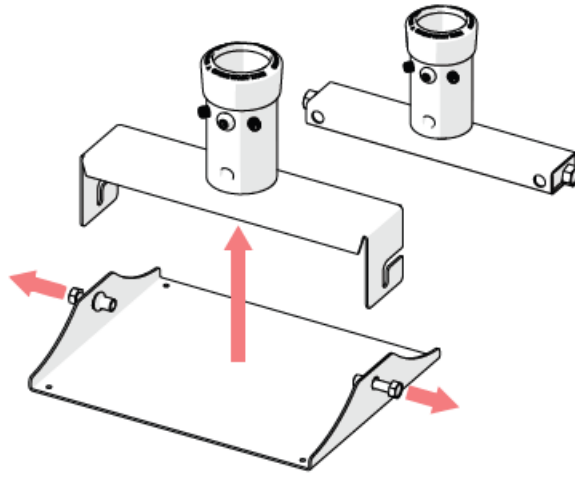
COMPONENTS



Installation Instructions

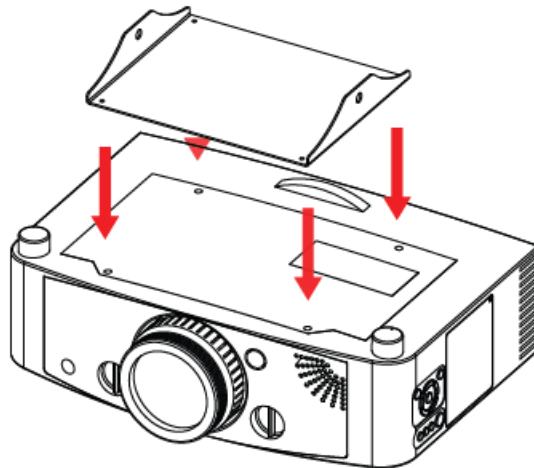
STEP 1 (inverted installation)

- Loosen the 2 x Hex M8 or M10 hex screws and disconnect the upper and lower parts of the PSU.
- The upper part of a PSU (T-Bar) generally fits to a column or peg connected to a ceiling plate or wall arm.
- The lower part fixes to an inverted projector. Cables run through columns or pegs and sockets to a projector.
(Alternative T-Bar shown for heavier projectors)



STEP 2

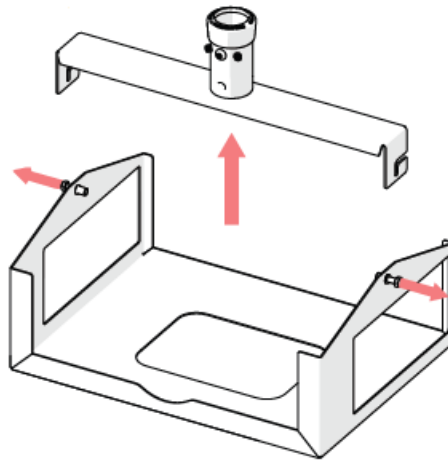
- Using the fixing screws provided fit the lower part of the PSU to the fixing holes of the inverted projector.
- The plate fixing to the projector is designed specifically for the projector ordered so may look different to the one shown.



PSC

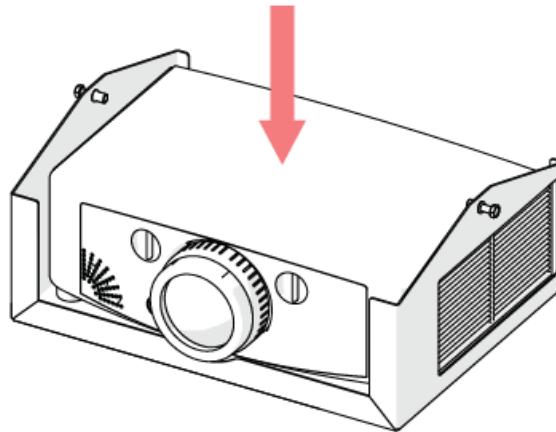
STEP 1 (cradle installation)

- Loosen the 2 x Hex M8 or M10 hex screws and disconnect the upper and lower parts of the PSC.
- The upper part of a PSC (T-Bar) generally fits to a column or peg connected to a ceiling plate or wall arm. The lower part acts as a cradle to house the projector. Cables run through columns or pegs and sockets to a projector.



STEP 2

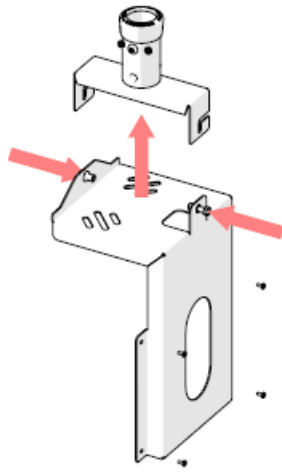
- Rest the projector on its feet in the base of the cradle.
- Each cradle is manufactured to suit the projector you have ordered the mount for. Balance and ventilation are taken into account within the design.



PPSU

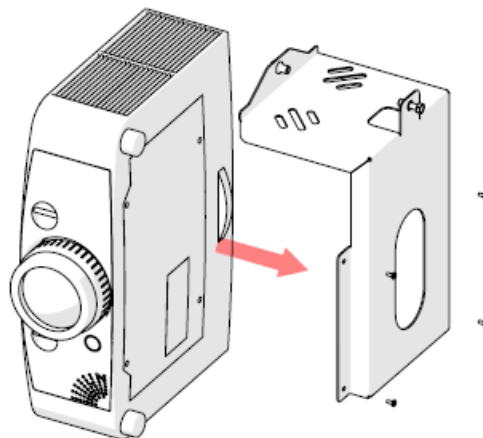
STEP 1 (portrait installation)

- Loosen the 2 x Hex M8 or M10 hex screws and disconnect the upper and lower parts of the PPSU.
- The upper part of a PPSU generally fits to a column or peg connected to a ceiling plate or wall arm. The lower part fixes to a projector on its side. Cables run through columns or pegs and sockets to the projector.



STEP 2

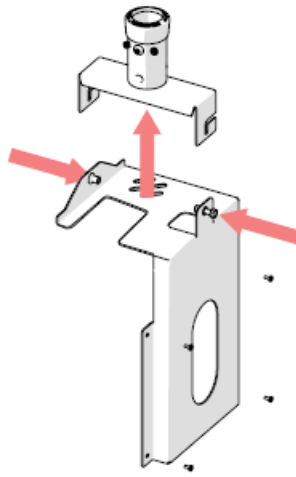
- Using the fixing screws provided fit the lower part of the PPSU to the fixing holes of the projector, on its side, lens pointing horizontally.
- The plate fixing to the projector is designed specifically for the projector ordered so may look different to the one shown.



VSU

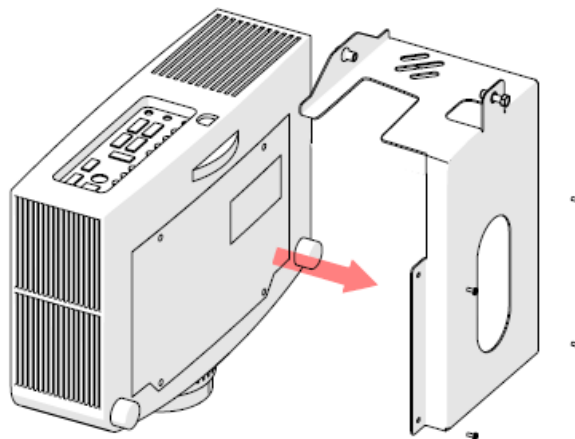
STEP 1 (vertical installation)

- Loosen the 2 x Hex M8 or M10 hex screws and disconnect the upper and lower parts of the VSU.
- The upper part of a VSU generally fits to a column or peg connected to a ceiling plate or wall arm. The lower part fixes to a projector on its side. Cables run through columns or pegs and sockets to projector.



STEP 2

- Using the fixing screws provided fit the lower part of the VSU to the fixing holes of the projector, on its side, with the lens pointing downward.
- The plate fixing to the projector is designed specifically for the projector ordered so may look different to the one shown.



CEILING SUSPENSION

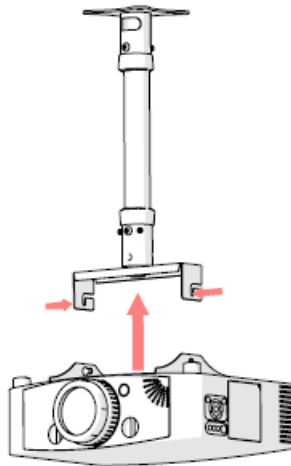
STEP 1 (typical installation shown)

- Remove the through-bolt in the upper part of the bar assembly socket and loosen the grub screws. Align socket with column or peg. Thread cables through the socket. Insert through-bolt and tighten. Tighten grub screws.
- Safety through-bolts must be used to secure the unit.
- Grub screws are used to remove slack in the joint.



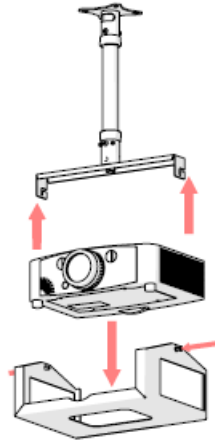
STEP 2 (PSU shown)

- Hook the lower part with the projector over the 2 x M8/M10 hex screws.
- Cable up the projector and set tilt angles then tighten M8/M10 hex screws. Set the rotation angle by turning the projector either way to finish the installation.
- Beware of stretching cables when adjusting angles.



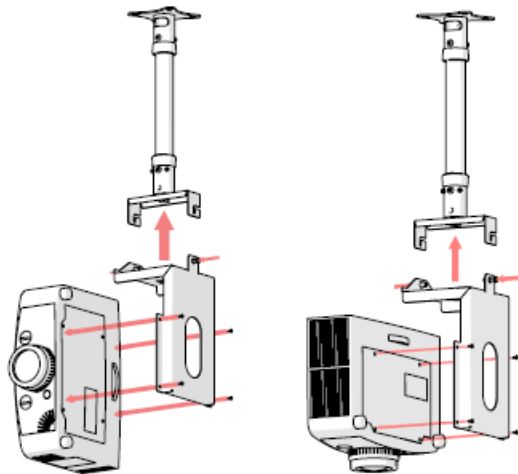
STEP 2 (PSU shown)

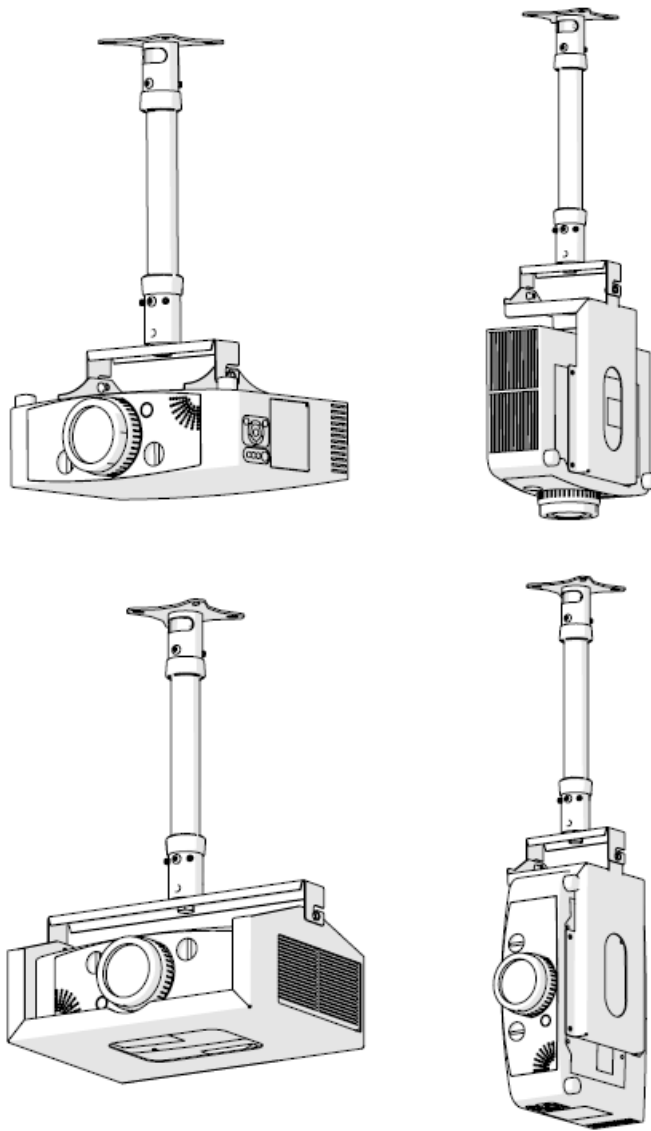
- Hook the lower part with the projector over the 2 x M8/M10 hex screws.
- Cable up the projector and set tilt angles then tighten M8/M10 hex screws.
- Set the rotation angle by turning the projector either way to finish the installation.
- Beware of stretching cables when adjusting angles.



STEP 4 (PPSU & VSU shown)

- Hook the lower part with the projector over the 2 x M8/M10 hex screws.
- Cable up the projector and set tilt angles then tighten M8/M10 hex screws.
- Set the rotation angle by turning the projector either way to finish the installation.
- Beware of stretching cables when adjusting angles.





CONTACT

- 01865 767676
- sales@unicol.com
- www.unicol.com

Documents / Resources

	<p>UNICOL PSU Direct Fixing Projector Suspension Unit [pdf] Instructions PSU, PSC, PPSU, VSU, PSU Direct Fixing Projector Suspension Unit, PSU, Direct Fixing Projector Suspension Unit, Fixing Projector Suspension Unit, Projector Suspension Unit, Suspension Unit, Unit</p>
--	---

References

- [User Manual](#)

This website is an independent publication and is neither affiliated with nor endorsed by any of the trademark owners. The "Bluetooth®" word mark and logos are registered trademarks owned by Bluetooth SIG, Inc. The "Wi-Fi®" word mark and logos are registered trademarks owned by the Wi-Fi Alliance. Any use of these marks on this website does not imply any affiliation with or endorsement.