


uni UA102 8 In 1 USB-C Hub



uni UA102 8 In 1 USB-C Hub User Manual

[Home](#) » [uni](#) » uni UA102 8 In 1 USB-C Hub User Manual 

Contents

- [1 uni UA102 8 In 1 USB-C Hub](#)
- [2 Getting Started](#)
- [3 Product Specification](#)
- [4 Using the Hub](#)
- [5 Warranty and Support](#)
- [6 Documents / Resources](#)
 - [6.1 References](#)
- [7 Related Posts](#)



uni UA102 8 In 1 USB-C Hub



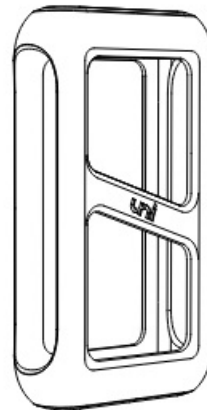
User Manual

USB-C 8-in-1 Hub Pro 8IN102

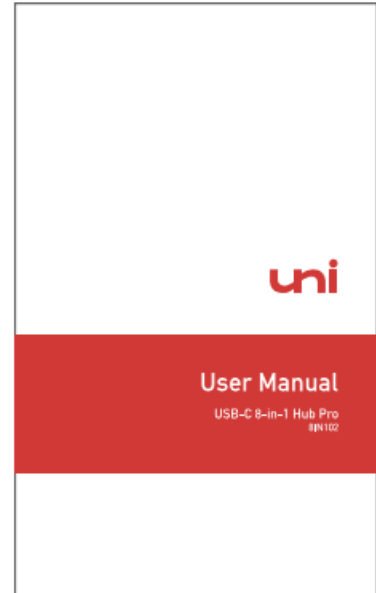
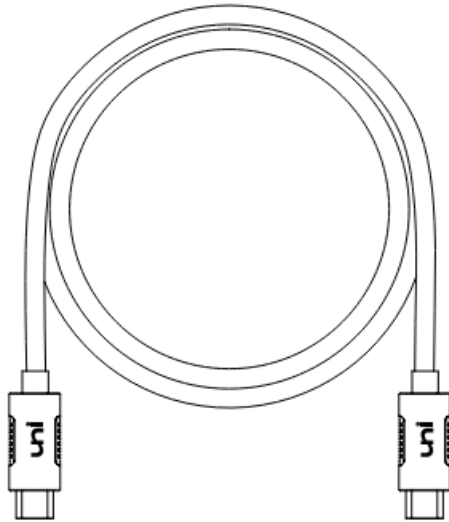
Or view the latest version user manual at <https://uniaccessories.com/user-manual>.

Getting Started

1. What's in the Box



1. USB C 8 in 1 Hub Pro
2. Removable Rugged Case



- 3. USB C Connector Cable
- 4. User Manual

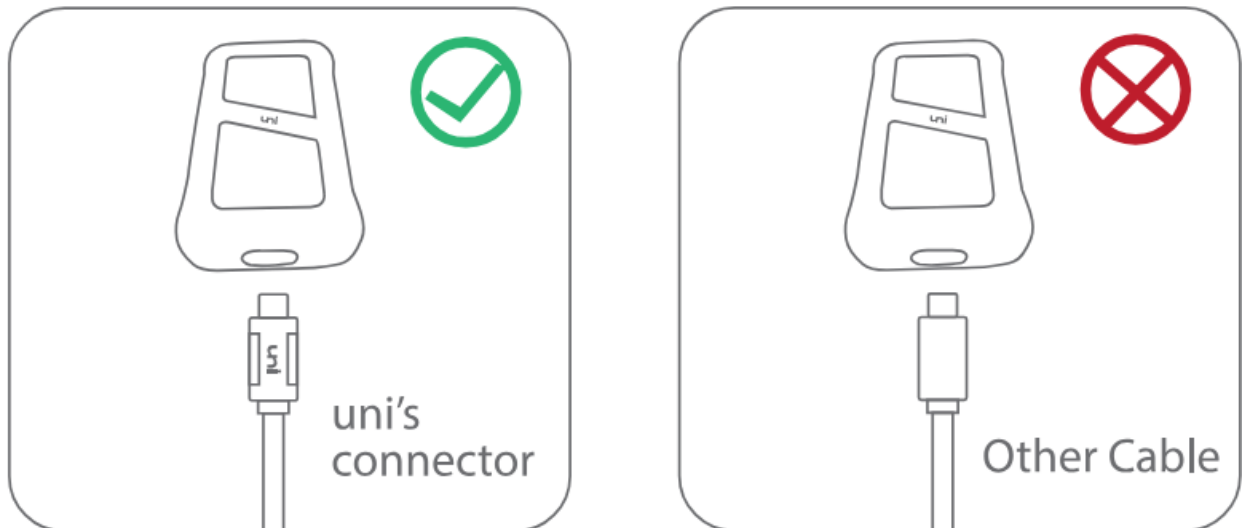
Product Specification

Model	8IN102
Hub Size (w/ case)	10.2 x 5.5 x 2.1cm
Connector Length	90cm
Gross Weight	145g
2 x USB 3.0 Port	up to 5Gbps, 5V@0.9A
1 x USB 2.0 Port	480Mbps, 5V@0.9A
1 x Ethernet Port	up to 1Gbps

1 x HDMI Port	Max. 4K@60Hz
1 x USB-C PD	up to 100W / 20V / 5A
1 x SD Card Slot	UHS-I, up to 104MB/s
1 x MicroSD Card Slot	UHS-I, up to 104MB/s

Using the Hub

- How to Use Connect one side of the 90cm USB-C cable to the end of the hub(the only side with one USB-C port), and plug the other end of the cable into the USB-C port on your laptop or host device. Then, connect any essentials you want to use to the appropriate ports. The hub should automatically recognize them.
 - When connecting the hub, only use the uni hub connector to connect it.



HDMI Port

- Make sure the USB-C ports of your devices support video output for a full connection.
- To stream video at 4K@60Hz resolution, be aware that all connections(input devices, output devices, and connect cables) must support 4K@60Hz. If you're using an HDMI 1.2 cable, you'll only get 1080p.

Ethernet Port

- To achieve a maximum internet speed of up to 1Gbps. make sure that your computer, router, peripherals, cables, and software all support and are set up for 1Gbps internet. Additionally, make sure that you're running the latest driver and that you plug in a CAT & up Ethernet cable.

Power Delivery Port

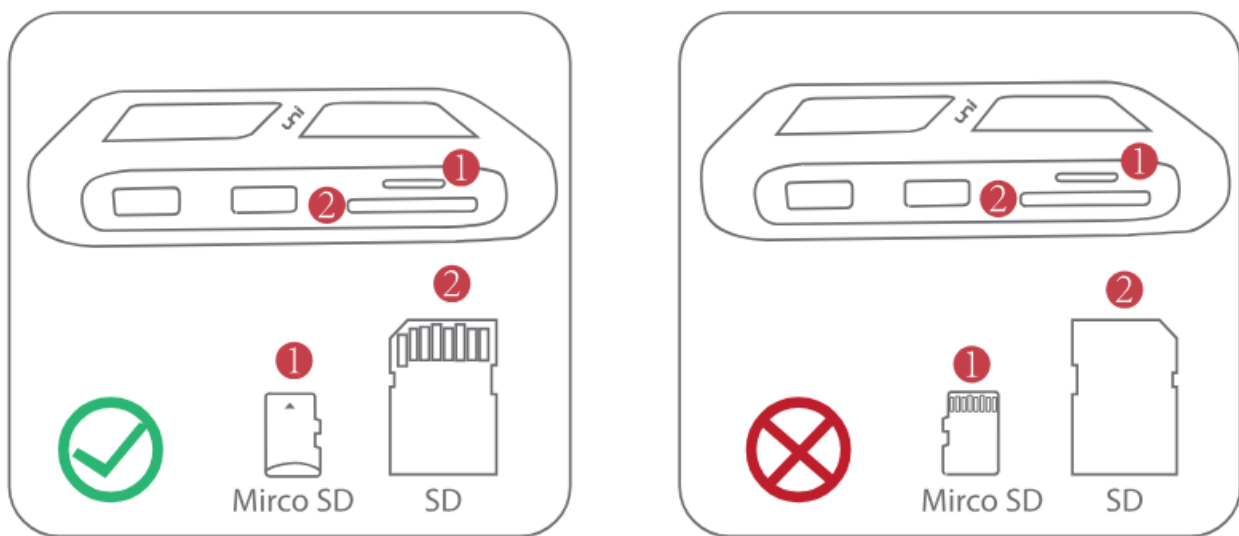
- The actual charging rate may vary depending on the device, cable, and charger. To obtain charging at the

maximum speed of up to 100W, your charger, charging cable, and charging device must all support 100W USB-C Power Delivery.

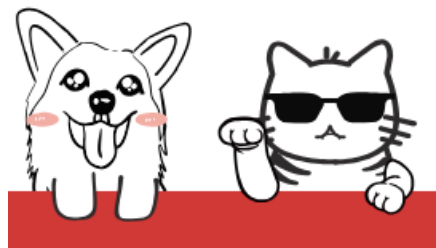
Note that the hub will take about 10W to run. If you're using tablets, laptops, or phones, we recommend using a 65W or higher charger.


Card Slots

- The hub is compatible with SD, SDHC, SDXC, MicroSD. MicroSDHC, Micro SDXC cards in UHS-I mode up to 104MB/s. When inserting an SD card, make sure the label side is facing down, and when inserting a MicroSD card, make sure the label side is facing up.
- Please note that the hub only supports original format files (e.g...CR2 for Canon, .NEF for Nikon) of the camera storage card for iPad OS devices.



Like us? Follow us:



-  www.uniaccessories.com
-  uniaccessories
-  uni.accessories
-  uniAccessories

FAQs

1. Q: My hub is charging slower than I expected, what should I do?

A: First, ensure that your charger, charging cable, and charging devices all support the power delivery range you expect. It's normal for the charging wattage to be slightly lower, as the hub itself consumes around 10W of power.

2. Q: Why is my monitor not streaming properly (blinking and freezing), or not displaying 4K at 60Hz?

A: First, confirm the USB-C port on your devices support video output. If needed, contact the manufacturer to confirm. Next, try another HDMI 2.0 cable to a different HDMI port. Additionally, try reversing and replugging the hub connector with your devices(try another USB-C port). If none of these steps work, reset the SMC in MacOS, or update your drivers in Windows.

3. Q: My internet cannot reach 1Gbps/ My ethernet port does not work?

A: First, confirm that your computer, router, peripherals. cables, and software all support and are set up to reach 1Gbps. Don't forget to check your Internet plan as well. Then, download the latest driver from (https://bit.ly/USB-C_LAN_drive) and reconnect to the internet. Finally, try restarting your computer and replugging the hub before reconnecting to the internet.

4. Q: Can I use a regular USB-C cable when the original one is lost or not long enough?

A: No. we highly recommend contacting us for more information, as the connectors are designed specifically to work with the Uni 8-in-1 hub, taking into account the removable case space when connecting.

Safety Caution

- Do not attempt to service or repair the product yourself. Leave any and all service work to qualified experts. Contact us for uni's 18-month warranty.
- Do not open the device or continue to operate it if damaged.
- Do not modify the product in any way.
- Doing so invalidates the warranty.
- Keep this product, like all electrical products, out of the reach of children.

Warranty and Support

Customer Support and Contact Information

uni offers lifetime technical support for all uni products Email us with any questions

support@uniaccessories.com Or submit detailed issue information <https://uniaccessories.com/support>

Warranty Information

This product is backed by a limited 18-month hassle- free warranty. The warranty covers parts and labor costs only. Please note that uniAccessories cannot be held responsible for any defects or damages caused by misuse, abuse, or regular wear and tear.

Documents / Resources



[uni UA102 8 In 1 USB-C Hub](#) [pdf] User Manual
UA102, 8IN102, UA102 8 In 1 USB-C Hub, 8 In 1 USB-C Hub, USB-C Hub, Hub

References

- [User Manual](#)

[Manuals+.](#) [Privacy Policy](#)

This website is an independent publication and is neither affiliated with nor endorsed by any of the trademark owners. The "Bluetooth®" word mark and logos are registered trademarks owned by Bluetooth SIG, Inc. The "Wi-Fi®" word mark and logos are registered trademarks owned by the Wi-Fi Alliance. Any use of these marks on this website does not imply any affiliation with or endorsement.