



UNI-DAMP DK-9310 UNI DAMP Hygro Box Instruction Manual

[Home](#) » [UNI-DAMP](#) » UNI-DAMP DK-9310 UNI DAMP Hygro Box Instruction Manual 

UNI-DAMP DK-9310 UNI DAMP Hygro Box



Contents

- 1 Dear Users
- 2 Preparing the Hygro-Box
- 3 Overview of components in the Hygro-Box
- 4 Display settings and information
- 5 Change of desired humidity
- 6 Filling shuttles in the box
- 7 Humidifier
- 8 Normal use
- 9 Maintenance/cleaning
- 10 Hints
- 11 Warranty conditions
- 12 Documents / Resources
 - 12.1 References
- 13 Related Posts

Dear Users

Congratulations with your new UNI-DAMP Hygro-Box, which in addition to ensuring you a significant saving on your Shuttle budget will give you significantly better shuttles to play with. To ensure the optimal benefit of the Hygro-Box, it is important that it is used correctly, so read the instructions before use.

Your new UNI-DAMP Hygro-Box is designed for easy and uncomplicated use, with a design to get as many shuttles in the box as possible, and ensure optimal humidification of the shuttles. The power consumption for the box is minimal.

IMPORTANT:

- The instruction manual should be read before the Box is used

Preparing the Hygro-Box

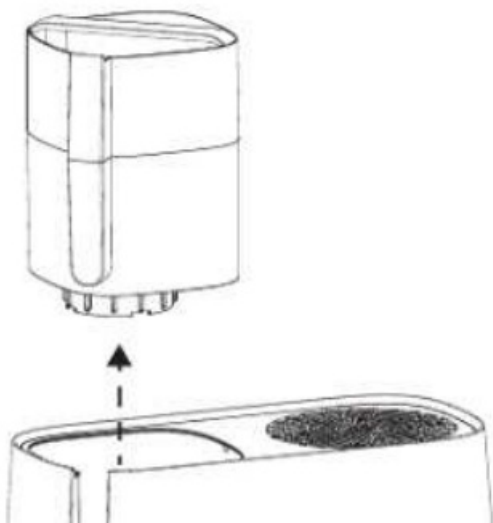
If the Hygro-Box is delivered on a pallet, it will be delivered with the adjustable feet unmounted, otherwise they may be damaged during transport. The adjustable feet are located in a bag inside the Hygro-Box. Once the Hygro-Box has been released from the pallet, the legs are mounted at the same time as the Hygro-Box is moved down from the pallet. Be sure to be more people, to ensure that the Hygro-Box does not tip during handling.

The four adjusting feet are to be screwed to the bottom as first, and when the HygroBox is placed in the desired location, unscrew one or more of the legs until the HygroBox is completely horizontal and rests on all four legs.

The transport cardboard placed at the bottom of the box is removed.

The humidifier is lifted by pulling the bracket on the humidifier-lift forwards. The humidity unit is lifted out of the cabinet for the first time and the water tank is lifted off (sketch 1)

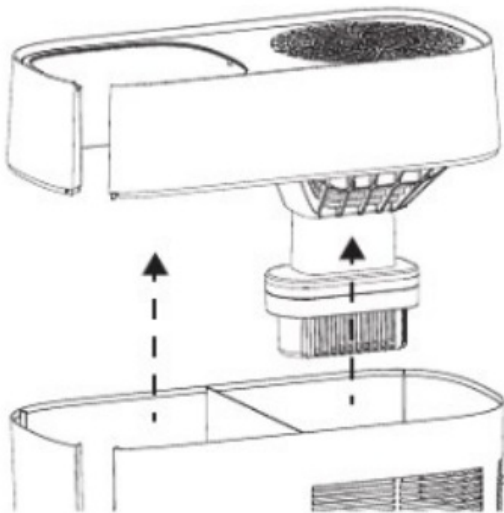
Sketch 1



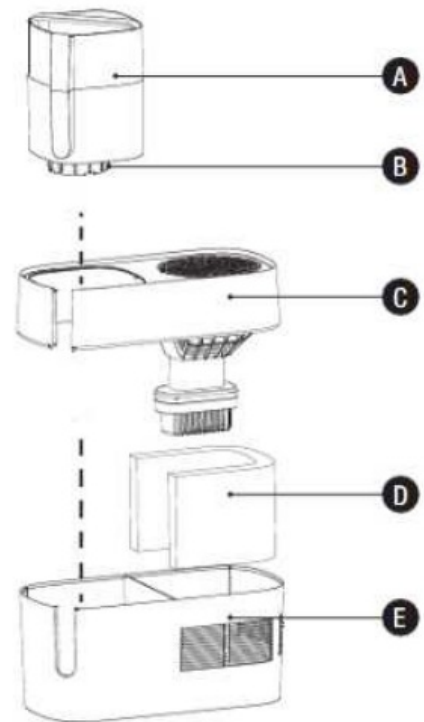
Tape holding the top during transport is removed and the top is lifted off (sketch 2).

The plastic bag around the filter is removed, and the filter without plastic is set back (Sketch 3).

Sketch 2



Sketch 3

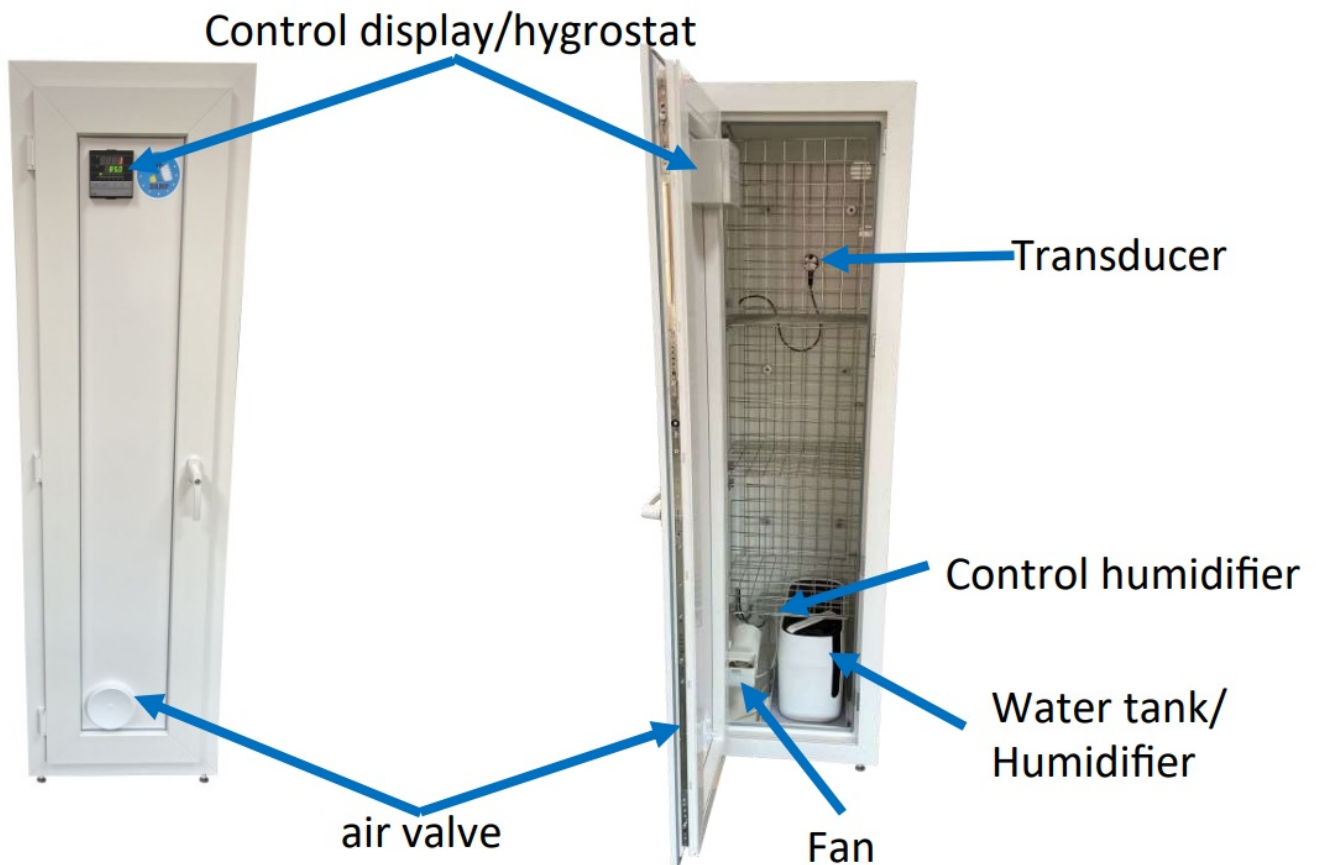


Then it is time to fill up the water tank. When the water tank is filled with water, add 20 drops of additive and close the tank with the cover lying on the shelf inside the HygroBox. The entire humidifier unit is assembled as shown in sketch 3 and placed on the humidifier-lift (if necessary, wait to put the water tank in place, until the humidifier unit is placed on the humidifier-lift).

The humidifier is lifted down into place by tilting the bracket on the humidifier-lift up and into the Hygro-Box.

The Hygro-Box is then ready for use and can be connected to electricity.

Overview of components in the Hygro-Box

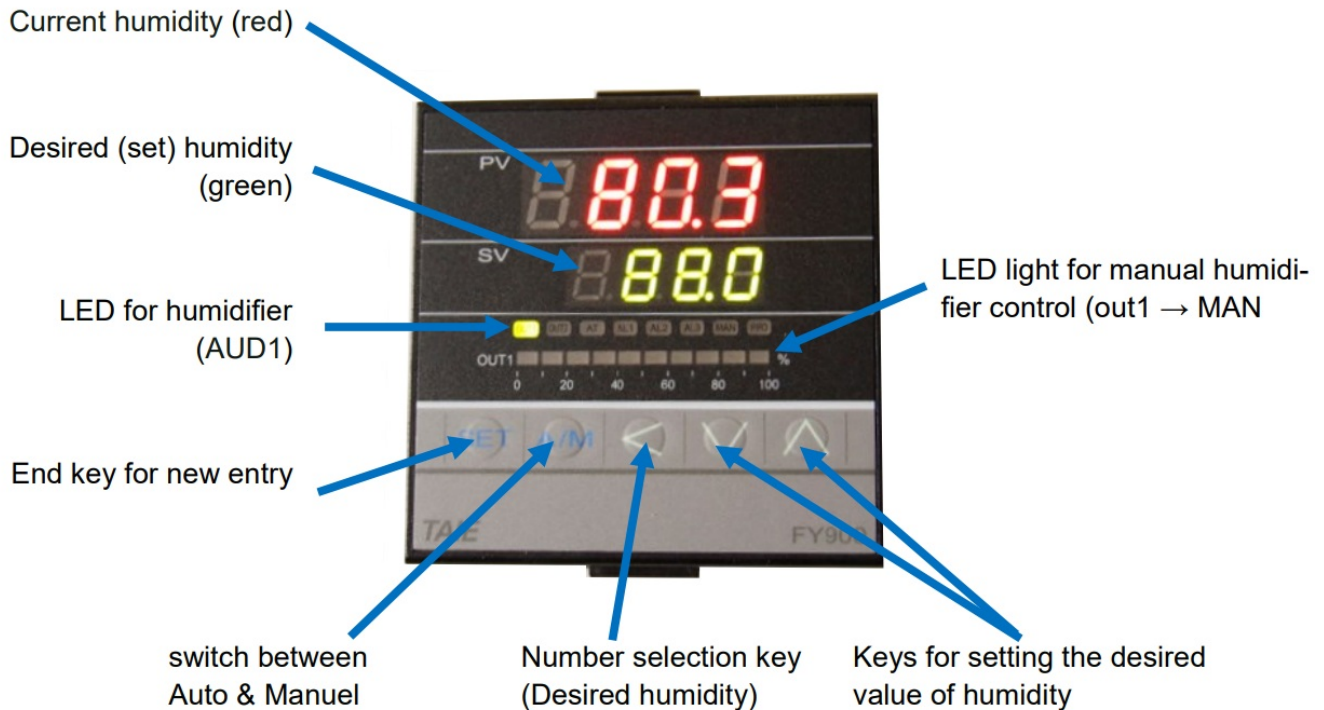


Display settings and information

(An overview of control display and components can be found on the following page)

1. From the top PV with red numbers. This value indicates the current humidity (present Value) in the cabinet
2. In the middle SV with green numbers. This value indicates the desired (Set Value) humidity in the cabinet
3. Below these two numbers there are a number of LEDs that may light up:
 - The first LED is **AUD**, which lights up when the humidifier is working
 - Second last is **MAN**. Should not be bright, since it indicates manual control
 - If it is lit, press the **A/M** key, the lit should now be off.
 - Other LEDs are not used.

TAIE BY900 regulator



Change of desired humidity

1. Press < and the number to the right, in the middle display with green flashes.
2. Press < a number of times until the number you want to change flashes
3. Change the number up or down with the keys ▼ and ▲
4. Repeat steps 2 and 3 if necessary
5. Finish by pressing the SET key

The best result is obtained by keeping a high humidity around 83-88%.

This high humidity level ensures that the horn sheath of the feathers is properly humidified. It makes them stronger, and ensures that they do not break so easily, but wear up (Feathers consist of a horn sheath, head rays and arc rays as well as about 10,000 small hooks to hold the feathers together in the shuttle)

When the humidifier works to increase the humidity to the desired level, it uses the water in from the water tank to humidify the air. The more "dry air" from outside entered into the box, the more water is used. Therefore, the air valve in the front door must be as good as closed, however, there must be room for some fresh air to enter the box (usually closed and turned 1/4 to 1/2 turn towards open).

If you want to reduce the humidity level, you change the level on the control panel.
After that, open the valve until the desired humidity percentage is constant, then close the valve again.

Filling shuttles in the box

When placing the shuttles in the Hygro-Box, the end caps must be removed from the tubes. The tubes are placed all the way back against the wire mesh. This ensures circulation in the cabinet and even supply of humidified air to all the shuttles.

It takes approx. 3 weeks before the shuttles reach their natural moisture balance. It is recommended the shuttles should be stored in the Hygro-Box for min. 3 weeks before use.



If you want to lock the individual wire doors, it is a good idea to use stainless steel padlocks (Extra equipment).

Humidifier

The humidifier is an integral part of the Hygro-Box, and must not be removed from the cabinet. The humidifier should only be removed in connection with service and cleaning.

The humidifier is initially programmed to work as it should in the Hygro-Box. If you accidentally have pushed the buttons on the humidifier, make sure that the humidifier is set on continuous operation, by pressing the buttons and until there is shown "CO" in the display

The humidifier is situated on an "evaporator lift". When the suction is pulled forward, the evaporator is raised so

that it can be pulled horizontally  out  of the cabinet without the water running out. When filling with water, the evaporator is pulled half out of the cabinet, and the water tank can be easily lifted out and filled. When the container is full, put it in place, move the evaporator back on the holder and tilt the bracket up. The use can be seen by scanning the code with mobile phone.





When cleaning the humidifier, switch off the Hygro-Box and unplug the cord. The water tank is lifted out and the housing is lifted off the lower part. Filter can be rinsed under cold water but must not be twisted or “rubbed”. The filter can possibly be turned over or replaced if it is “damaged”. The lower part is cleaned with hot water with ordinary dishwashing liquid. The unit is reassembled with filter and placed correctly in the cabinet (see previous sketch). Water tank is inserted and power is reconnected.

Normal use

The Hygro-box usually only needs to be refilled with water approx. every 2 or 3 Week.

A dose of water freshener (additive) should be added to each refill. This remedy prevents the formation of bacteria and mold.

There must be no water droplets in the cabinet. Drops can occasionally occur with door seals

Maintenance/cleaning

The cabinet should be cleaned approx. once a year or as needed, e.g. mold occurrences. Do not use strong detergents or descales for cleaning. It is recommended to use ordinary household detergents.

1. Power is turned off and the plug is disconnected from the wall outlet.
2. The hygro-box is emptied of shuttles etc.
3. Water tank is removed .
4. The humidifier is now carefully removed and placed outside on the floor.
5. The humidifier is dismantled and the upper part is cleaned with a wet cloth, the sump is emptied and washed, and the filter is rinsed thoroughly. Then the humidifier is assembled as shown in the previous sketch.
6. Water tank emptied. Water tank and the cover with the valve must be thoroughly cleaned of dirt and lime.
7. Clean the box inside with a wet cloth with detergent. Any deposits or mold are removed using a scouring pad.
8. Water tank is filled, additive is added and container is placed in humidifier.
9. The cabinet is restarted.

Hints

To get the most out of the UNI-DAMP Hygro-Box, we have the following advice:

- A person should be appointed who is responsible for the shuttles and the operation of the Hygro-box. In this way, the shuttles and the storage time can be kept under control.
- If the Hygro-Box humidity is constant, the air valve in the front door must be almost closed. If lower humidity is desired in the Hygro-Box, open the air valve and lower the hygostat to the desired humidity. When the new humidity is constant, the valve could be closed again.
- A proposal for a further saving is if, after a match, you collect used shuttles and check and polish them, and then get them back in the Hygro-Box. The shuttles could as an example be used in youth department or as training shuttles. This can easily provide a good, extra saving.

Warranty conditions

1. Read the operating instructions carefully before using the product. Save a receipt showing the date of purchase, in case there should be a need to make use of the warranty.
2. Uni-Damp A/S provides a 2-year full warranty, which gives the right to repair or replace parts or components that may be defective, as a result of manufacturing or material defects. The warranty does not cover misuse or improper use of the product, or consequential damages. Defects due to normal use of the product are not considered as production defects, and are thus not covered by the warranty, e.g. moisture filter etc.
3. Uni-Damp A/S may choose to repair or replace components as part of the warranty, in consultation with the user.
4. This warranty does not cover damage caused by unauthorized attempted repair or use in violation of this manual.

UNI-DAMP ApS
Rønnvevej 7, Stae
DK-9310 Vodskov
Denmark




: +45 2819 7071

Mail: info@uni-damp.dk
www.uni-damp.dk



Documents / Resources

	<p>UNI-DAMP DK-9310 UNI DAMP Hygro Box [pdf] Instruction Manual</p> <p>DK-9310 UNI DAMP Hygro Box, DK-9310, UNI DAMP Hygro Box, DAMP Hygro Box, Hygro Box , Box</p>
---	---

References

- [🌐 damp.dk is almost here!](#)
- [🇩🇰 Fugtskabe fra Uni-Damp - Bedre Badmintonbolde](#)