



## UNI BRIGHT Moon 800 Surface Mounted Luminaire Led Instruction Manual

[Home](#) » [UNI-BRIGHT](#) » UNI BRIGHT Moon 800 Surface Mounted Luminaire Led Instruction Manual 

UNI BRIGHT Moon 800 Surface Mounted Luminaire Led



## Contents

- [1 Safety](#)
- [2 DIMENSIONS](#)
- [3 Warning](#)
- [4 Installation](#)
- [5 Documents / Resources](#)
  - [5.1 References](#)
- [6 Related Posts](#)

## Safety



For indoor use only.

This fitting should only be installed in rooms where direct contact with water is impossible.



Luminaire not suitable for covering with insulating material.

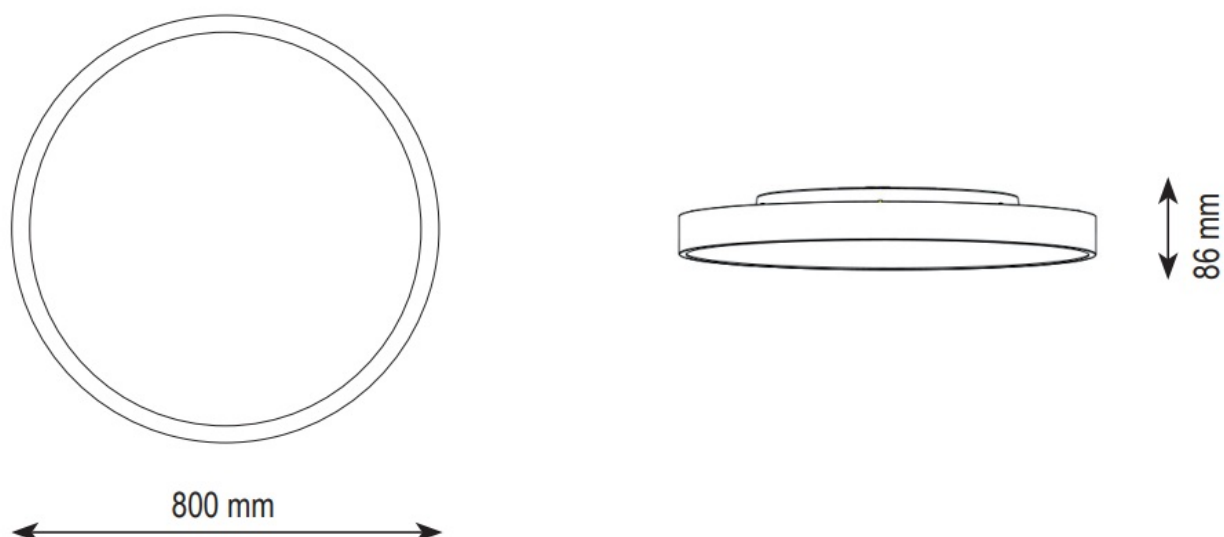
**IP40** Protected against objects  $\geq 1$  mm. Not protected against water.



Correct disposal of this product (electrical & electronic equipment waste)

- The electrical installation should be carried out by qualified personal only, according to the regulations for electrical and mechanical safety in your country. Improper installation can result in serious injuries and/or damage to property.
- For safety and guarantee reasons it is prohibited to make any modifications to the unit.

## DIMENSIONS



MN80075W	White	Ê 800 mm	SMD LED	75W	3000K – 4000 K	8000 lm
MN80075B	Black	Ê 800 mm	SMD LED	75W	3000K – 4000 K	8000 lm
Dali Driver included						








## Warning

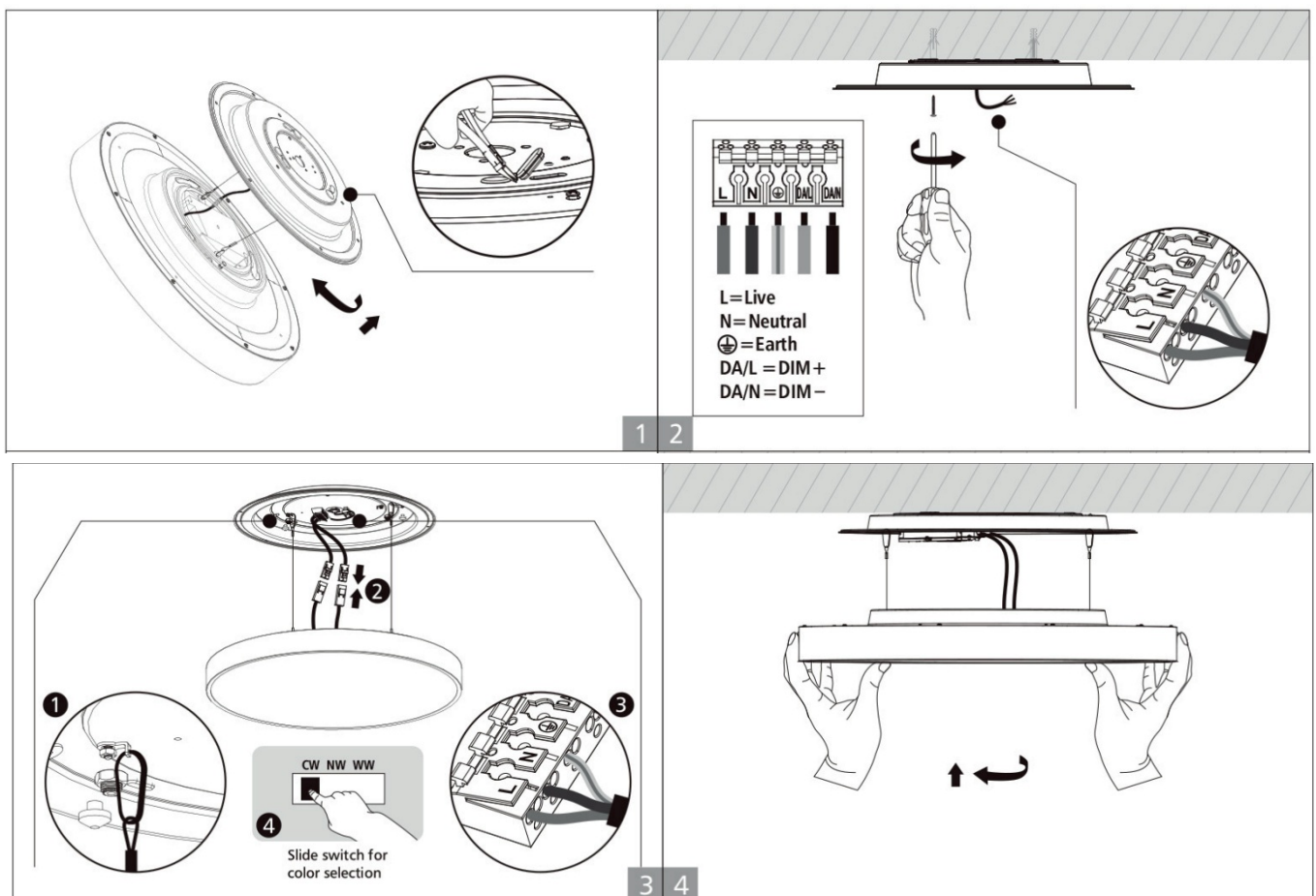
### • WARNING !

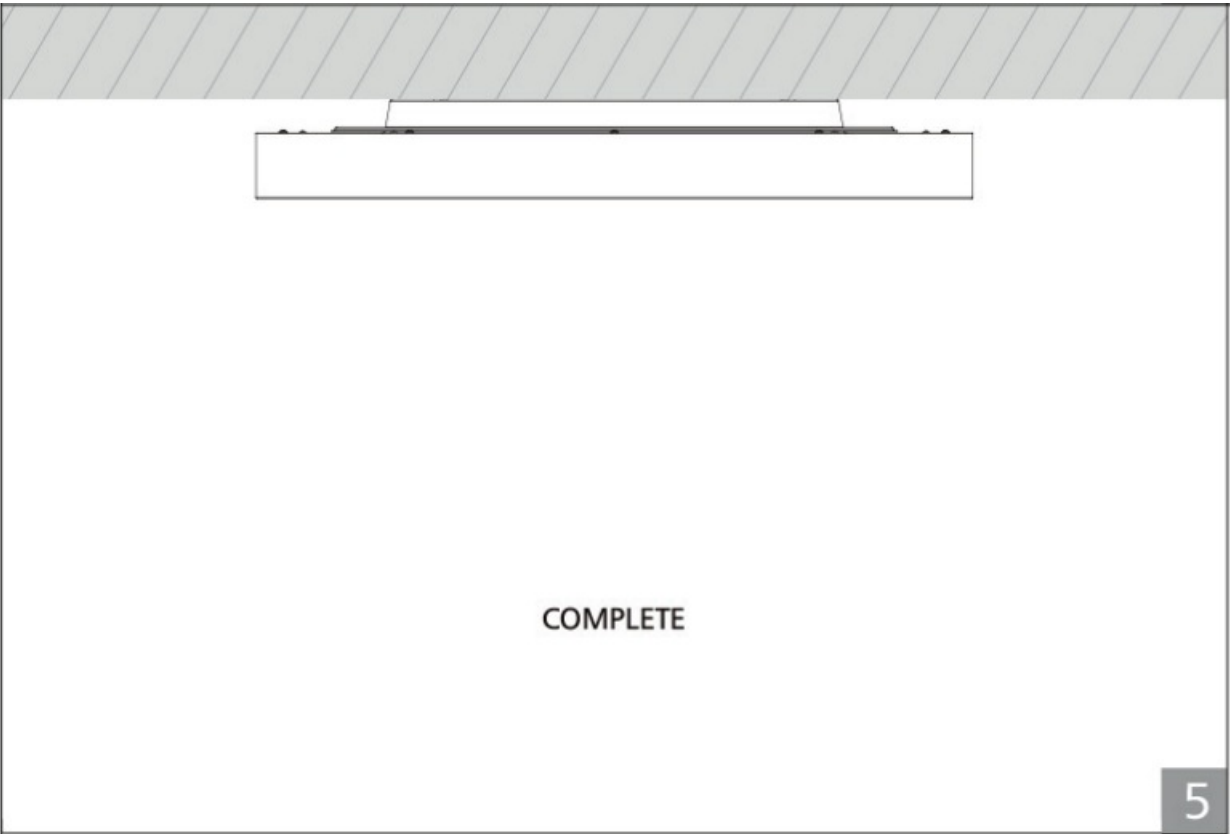
To prevent electrical shock – Always switch off electricity supply before installation and maintenance.

## Installation

- Please follow the sequence of installation step by step

### Surface Mount Installation





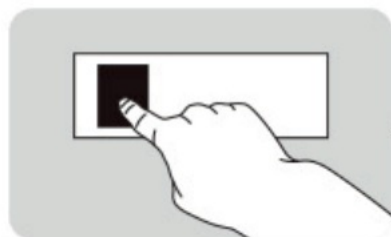
Guidance for Wattage(Current) Selection (For MERRYTEK driver only)			
Diameter	Watt	Rated Current	LED Driver Current Selection by DIP-switch
	40W		

<!) 800			Table 1-Rated output power and current sets					Pin 1	Pin 2	Pin 3	rated [ mA]		
			I out mA	300	350	450	500	550	—	—	—	300	
			U min(V)	80	80	80	80	80					
			Um axM	330	330	266	240	219	ON	—	—	350	
			P min(W)	24	28	36	40	44	—	ON	—	450	
			P max(W)	99	115.5	120	120	120	—	—	ON	500	
			Ta[°C]	50	50	so	50	so					
			Tc[°C]	80	80	80	80	80	ON	—	ON	550	
			Line current, nominal@230VmA	463	540	561	561	561	—	ON	ON	650	
			Maxpower lose @230V mA	7.4	8.7	9	9	9					
			input power@230VmA	106.4	124.2	129	129	129	ON	ON	ON	700	

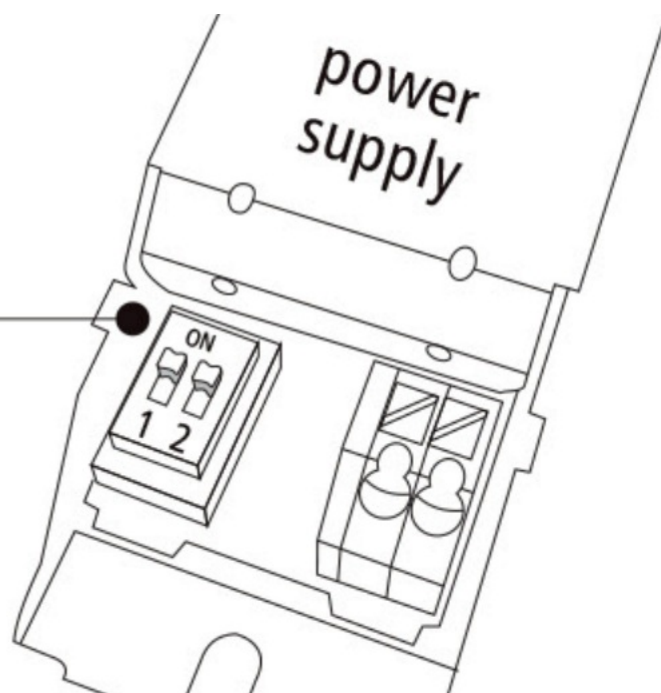
Guidance For Wattage(Current) Selection (For OSRAM & TRIDONIC driver only)						
Diameter	Watt	Rated Current	LED Driver Current Selection by DIP-switch			
< > 800	47W	350mA	<b>Table 1– Rated output power and current sets</b>			
	SSW	400mA				
	68W	500mA	I out(mA)	350 0	400 0	500 0
	75W	550mA	U min M	70	70	70
			U max [V]	217	187	150
			P min [W]	24.5	28	35
			P max [W]	77	75	75
			Ta [°C]	50	50	50
			Tc [°C]	75	75	75
			Line Current, nominal@230V mA	370	370	370
			Max PowerLoss@230V[W]	6	6	6
			Input Power@230V [W]	47.3	59.1	83
<P 1000	100W	250-700mA	Ready-for-use resistor between 300-700mA to set output current value(Please refer to Tridonic I-SELECT 2 PLUG PRE/ EXC for detail s)			



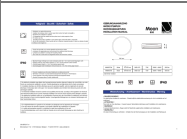
**Warning:** DIP switch selection must comply with guidance, otherwise product will be overloaded!



Select preferred power



## Documents / Resources

	<a href="#">UNI BRIGHT Moon 800 Surface Mounted Luminaire Led</a> [pdf] Instruction Manual Moon 800 Surface Mounted Luminaire Led, Moon 800, Surface Mounted Luminaire Led, Mount ed Luminaire Led, Luminaire Led, Led
---	--

## References

- [Producent en distributeur van ledverlichting | Uni-Bright | LED-verlichting](#)