

SM
V48 Single Head Cutter Plotter



SM V48 Single Head Cutter Plotter Instruction Manual

[Home](#) » [Support](#) » SM V48 Single Head Cutter Plotter Instruction Manual 

Contents

- [1 SM V48 Single Head Cutter Plotter](#)
- [2 Specifications](#)
- [3 DIMENSION](#)
- [4 Product description](#)
- [5 Package Content](#)
- [6 Troubleshooting](#)
- [7 Usage Guide](#)
- [8 Safety Guidelines](#)
- [9 Warranty Information](#)
- [10 FAQs](#)
- [11 Documents / Resources](#)
 - [11.1 References](#)

SM

SM V48 Single Head Cutter Plotter



ABOUT

- **CUTTING CAPACITY** - 34-inch vinyl cutter with maximum paper feed of 870mm(34.3"), maximum cutting width of 780mm(30.7"), cutting precision of ± 0.01 mm(0.0004"), and paper feed precision of 3m(118").
- **STRONG STABILITY** - Adopts D-typed motherboard and 128K-2M high speed cache memory. 2 double-spring pinch rollers and aluminum knurling stick ensure that the paper feed will not deviate by long distance.
- **HIGH COMPATIBILITY** - Available with COMPIM and USB interface for more precise control. Supports DM/PL, HP/GL language. System: Pentium processor-based PC or compatible computer (Windows), Windows XP/Vista/7/8/10 (32-bit & 64-bit). NOT compatible with Mac system.
- **DIGITAL CONTROL** - Comes with illuminated LCD screen and large control panel. With cutting pressure 10-500g adjustable, and cutting speed 10-800mm/s adjustable.
- **WIDELY USED** - Can be used in advertisement field, various decoration, handcraft, supplementary for heat transfer, label & sign making, etc.

Specifications

- **Maximum Media Width:** 1350 mm
- **Maximum Cutting Width:** 1240 mm
- **Maximum Contour Cutting Width:** 1200 mm
- **Packing Size:** 1620 x 380 x 420 mm
- **Gross Weight:** 39 kg
- **Cutting Precision:** ± 0.01 mm

- **Repeat Precision:** 0.082 mm
- **Maximum Moving Speed:** 700 mm/s
- **Maximum Cutting Speed:** 600 mm/s
- **Processor Memory:** 128 MB
- **Motor Type:** Stepper
- **Power Consumption:** Less than 100 W
- **Working Environment:** Temperature range of +5°C to +35°C
- **Max Paper Feed:** 34.3" (870 mm)
- **Max Cutter Width:**30.7" (780 mm)
- **Cutter Pressure:** 10-500g
- **Cutting Speed:** 0.4"-31.5"/s (10-800 mm/s)
- **Memory:** 128K-2M
- **Repetition Accuracy:** 0.0004" (0.01 mm)

Technical Details

Brand	CXTU
Item Weight	500 g
Item Weight	500 g

Additional Information

ASIN	B09F9G7XWL
Date First Available	2 September 2021

DIMENSION



Product description

Key Features

- **High Efficiency**

With large paper feed and cutting width, features high cutting precision and paper feed precision. ARM motherboard and stepper motors are equipped.

- **USB & Serial Ports**

- COM1 and USB ports available. Standard USB 2.0 interface equipped. Flexible switch between USB and virtual serial ports.
- Adjustable Force & Speed, Digital control panel allows adjustment of cutting force and speed, for more precise and controllable cutting.

- **Precise Blade**

Equipped with three standard blades with a diameter of 2mm, Roland compatible. Also structured with a closed blades holder, not easy to slip.

- **Anti-deviation Design**

2 adjustable double-spring pinch rollers, aluminum knurling stick, high precision pressing wheels and scale line ensure the anti-deviation of paper feed by long distance.

- **Sturdy Floor Stand**

Structured with heavy duty sheet metal floor stand, featuring 4 caster wheels for convenient movement.

MAX.PAPER FEED:870MM/34.3''

MAX.CUTTING WIDTH:780MM/30.7''



**2MB OR 16MB
HIGH SPEED
CACHE MEMORY**

**D-TYPE
OR ARM
MOTHER-BOARD**

**CUTTING
PRECISION OF
0.01MM/0.0004''**

HIGH EFFICIENCY

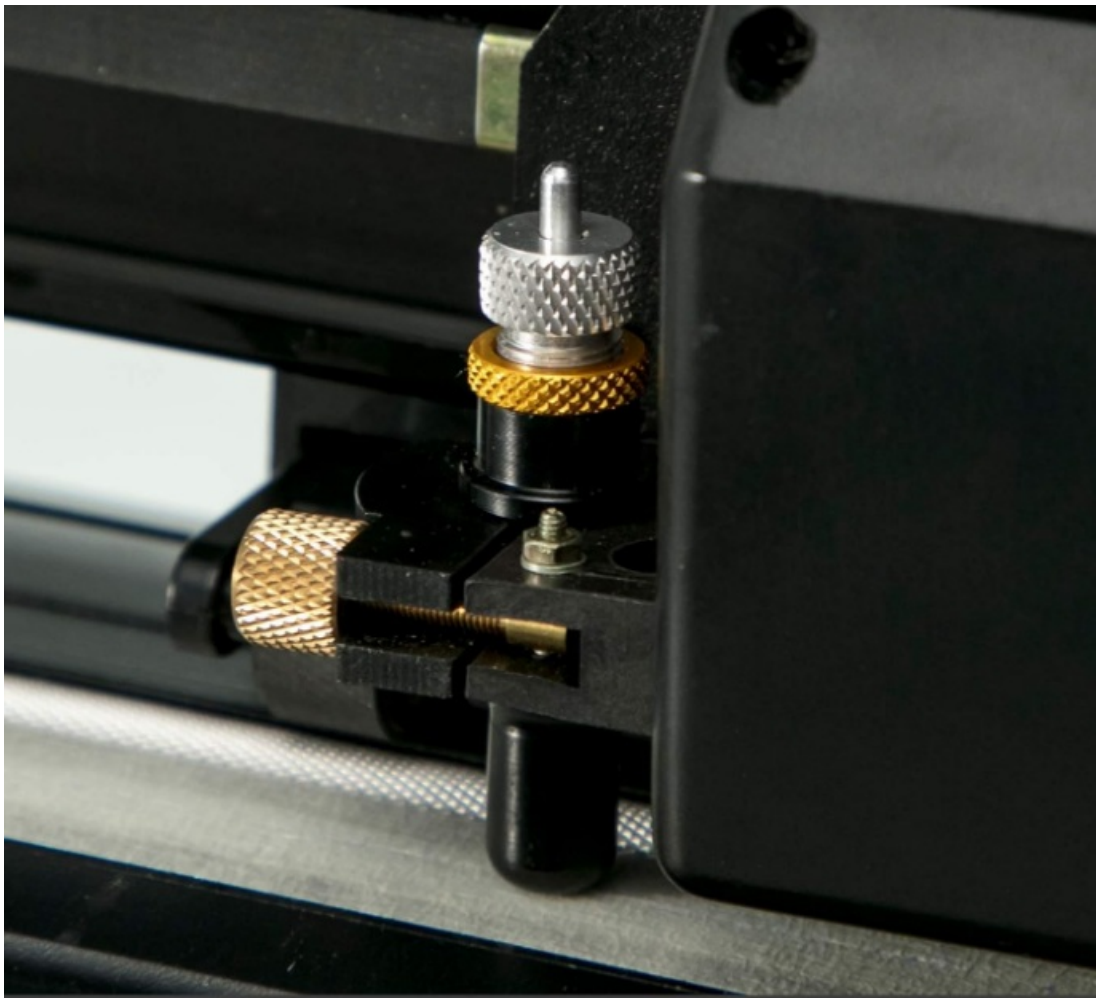


USB & SERIAL PORTS

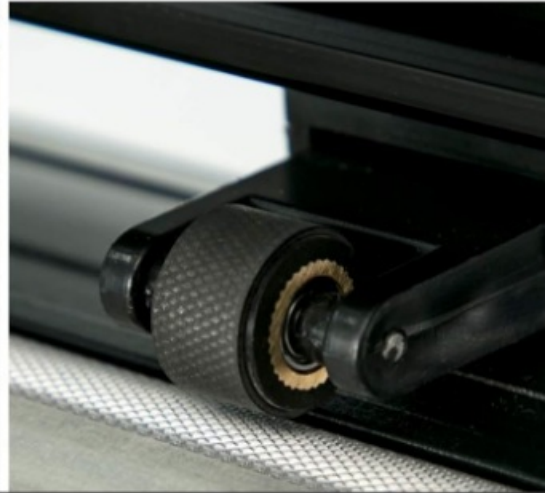
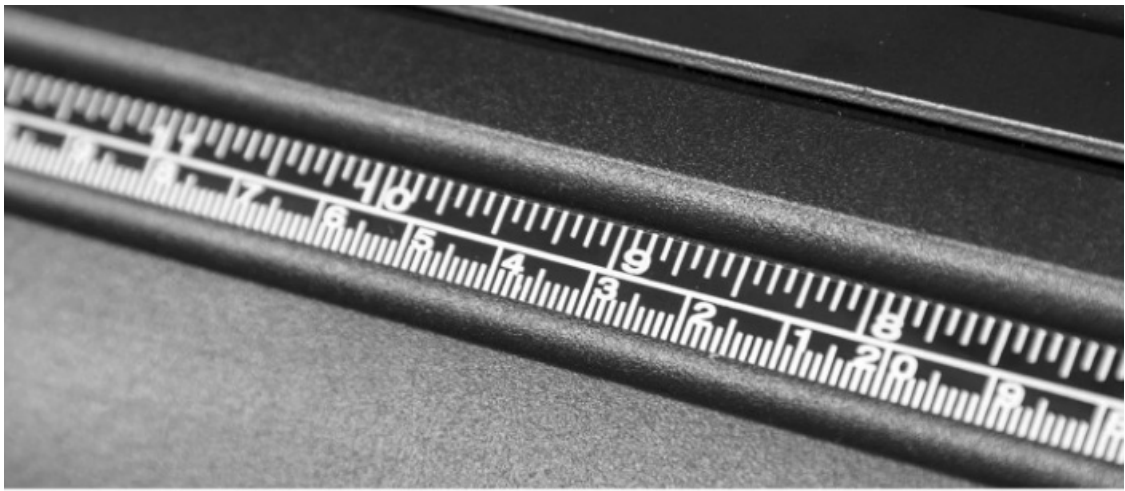
- CUTTING FORCE:10-500G
- CUTTING SPEED:10-800MM/S



ADJUSTABLE FORCE & SPEED



PRECISE BLADE



ANTI-DEVIATION DESIGN



ROLLERS

CASTER WHEELS

STURDY FLOOR STAND

Package Content



- 1 X 34 Inch Vinyl Cutter Plotter Machine
- 1 X SIGNMASTER Software
- 1 X Blades Holder
- 3 X Blades
- 1 X Pen Holder
- 3 X Cables (USB/Serial/Power Cord)
- 1 X USB Flash Disk;
- 1 X User Manual
- 1 X Floor Stand Kit

Troubleshooting

Cutter Not Powering On

- Check if the power cable is properly connected.
- Ensure the power switch is turned on.
- Try using a different power outlet.
- Inspect for blown fuses and replace if necessary.

Cutter Not Responding to Commands

- Verify the USB or Wi-Fi connection.
- Ensure drivers and software are correctly installed.
- Restart both the plotter and computer.
- Try a different USB cable or port.

Cutting Errors (Inaccurate Cuts, Skipping, or Jagged Edges)

- Check blade sharpness and replace if dull.
- Adjust cutting force and speed based on the material.
- Ensure the material is properly secured.
- Clean any debris from the blade holder.

Contour Cutting Issues

- Make sure the camera is functioning correctly.
- Use high-contrast registration marks.
- Calibrate the optical sensor in the software.
- Verify the material is flat and aligned.

Material Jamming or Slipping

- Adjust pinch rollers to apply even pressure.
- Use a cutting mat for thinner materials.
- Check if rollers are clean and free of debris.

Usage Guide

Setup and Installation

1. **Unbox the Plotter:** Ensure all components, including power cables, USB cables, blades, and cutting mat, are included.
2. **Position the Machine:** Place it on a stable surface. Ensure proper ventilation.
3. **Connect the Power Supply:** Plug in the power cable and turn on the machine.
4. **Install Drivers & Software:**
 - Install the required software (e.g., CorelDRAW, SignMaster, or ArtCut).
 - Install the necessary drivers for communication between the plotter and the computer.
5. **Connect to PC:** Use a **USB cable** or **Wi-Fi** (if supported) to link the plotter to your computer.

Loading Material

1. **Adjust Pinch Rollers:** Ensure the rollers align with the material width.
2. **Load the Vinyl/Paper:** Feed the material under the rollers and adjust its position.
3. **Set the Cutting Origin:** Use the control panel or software to set the starting position.

Blade Setup

1. **Insert the Blade:** Choose a blade angle (e.g., 30°, 45°, or 60°) depending on the material.

2. **Adjust Cutting Depth:**

- Too deep = damage to the cutting strip.
- Too shallow = incomplete cuts.

3. **Test Cut:** Perform a small test cut to confirm settings.

Cutting Process

1. **Prepare the Design:** Create or import your design into the cutting software.
2. **Adjust Cutting Settings:** Set speed, pressure, and blade force according to the material type.
3. **Send the Job:** Click **Cut/Send** from the software.
4. **Monitor the Process:** Ensure smooth movement and alignment.

Contour Cutting (Using Camera)

1. **Print Your Design with Registration Marks.**
2. **Load the Printed Material.**
3. **Use the Optical Camera:** The cutter will detect the marks and align accordingly.
4. **Start Cutting:** Ensure accuracy before proceeding.

Finishing Up

1. **Unload the Material:** Carefully remove the cut design.
2. **Weed Excess Vinyl:** Remove unwanted sections using a weeding tool.
3. **Apply Transfer Tape (if needed).**
4. **Power Off the Machine.**

Maintenance Tips

- Regularly clean the blade holder and pinch rollers.
- Keep the cutting strip in good condition.
- Update firmware/software as needed.
- Store blades properly to prevent dulling.

Safety Guidelines

To ensure safe and optimal operation of your SM V48 Single Head Cutter Plotter, follow these precautions:

Electrical Safety

- Use the correct power voltage as specified in the user manual.
- Avoid using damaged or loose power cords.
- Do not operate the plotter with wet hands or in a damp environment.
- Turn off and unplug the machine when not in use.

Blade Safety

- Handle cutting blades carefully to avoid injury.
- Always use the appropriate blade for your material.
- Store unused blades safely away from children.

Operational Safety

- Ensure the cutting area is clear before starting.
- Keep hands and loose clothing away from moving parts.
- Use proper ventilation when working with adhesive-backed vinyl.

Maintenance Safety

- Turn off the machine before performing maintenance.
- Regularly clean the blade holder, pinch rollers, and cutting strip.
- Do not attempt to disassemble internal electrical components.

Warranty Information

The SM V48 Single Head Cutter Plotter typically comes with a standard manufacturer warranty, which may vary by region or seller. Below are the common warranty terms:

Warranty Coverage

- **Duration:** Usually **1 year** from the purchase date.
- **Covers:** Manufacturing defects, electrical faults, and non-user-induced malfunctions.
- **Parts Covered:** Mainboard, motor, display panel, and power supply unit.

Warranty Exclusions

- Damage due to mishandling, improper use, or unauthorized modifications.
- Wear-and-tear items (e.g., blades, cutting strip, pinch rollers).
- Issues caused by third-party software or accessories.
- Damage from power surges or improper voltage use.

FAQs

How do I install the SM V48 cutter plotter?

Connect the power and USB cable, install the driver and cutting software, load the material, and set the blade.

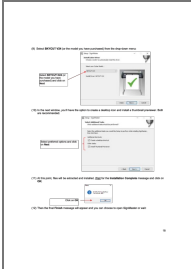
Why is my cutter not cutting accurately?

Check blade sharpness, adjust cutting pressure and speed, and ensure the material is properly aligned.

What maintenance does the SM V48 cutter require?

Regularly clean the blade holder, pinch rollers, and cutting strip. Replace worn-out blades and check software updates.

Documents / Resources



[SM V48 Single Head Cutter Plotter](#) [pdf] Instruction Manual
V48 Single Head Cutter Plotter, V48, Single Head Cutter Plotter, Head Cutter Plotter, Cutter Plot
ter

References

- [User Manual](#)

Manuals+, Privacy Policy

This website is an independent publication and is neither affiliated with nor endorsed by any of the trademark owners. The "Bluetooth®" word mark and logos are registered trademarks owned by Bluetooth SIG, Inc. The "Wi-Fi®" word mark and logos are registered trademarks owned by the Wi-Fi Alliance. Any use of these marks on this website does not imply any affiliation with or endorsement.