



UNCAGED ERGONOMICS KM1 Wireless Mouse and Keyboard Combo User Guide

[Home](#) » [UNCAGED ERGONOMICS](#) » **UNCAGED ERGONOMICS KM1 Wireless Mouse and Keyboard Combo User Guide** 

Contents

- [1 UNCAGED ERGONOMICS KM1 Wireless Mouse and Keyboard Combo](#)
- [2 Instruction](#)
- [3 Troubleshooting](#)
- [4 Safety instructions](#)
- [5 FCC Warning](#)
- [6 Documents / Resources](#)
- [7 Related Posts](#)

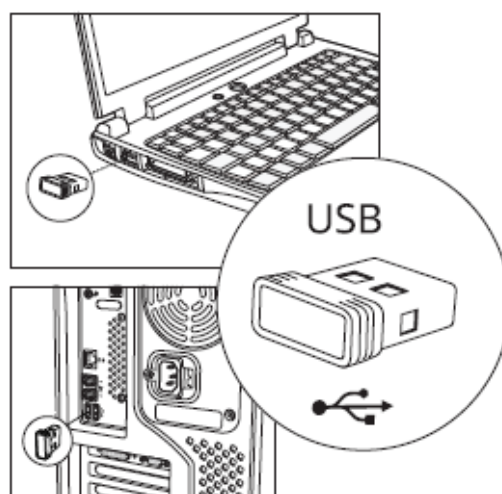
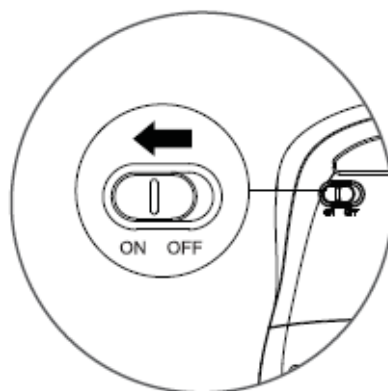


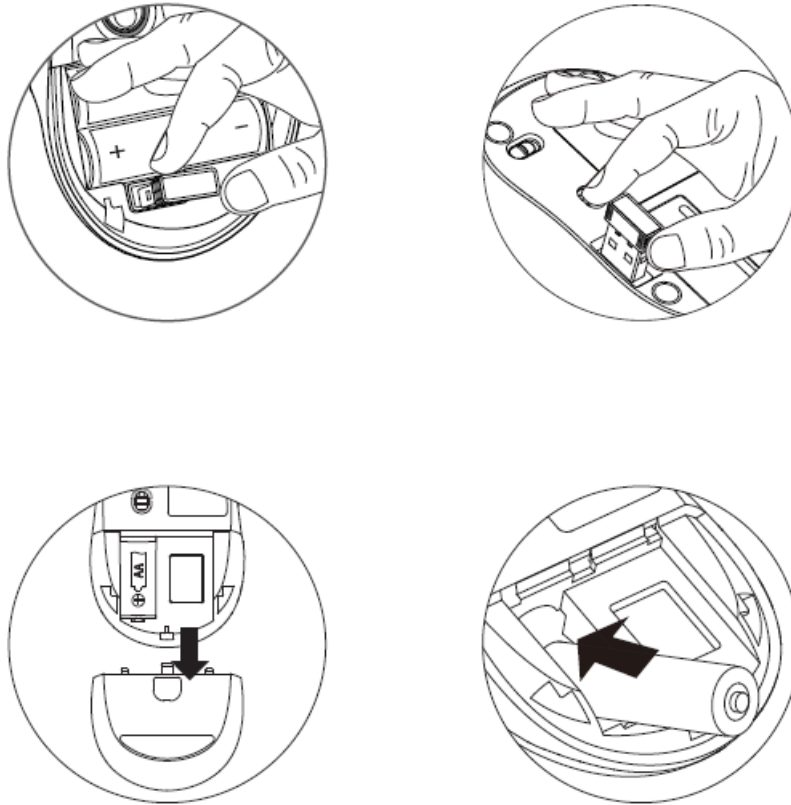
UNCAGED ERGONOMICS KM1 Wireless Mouse and Keyboard Combo



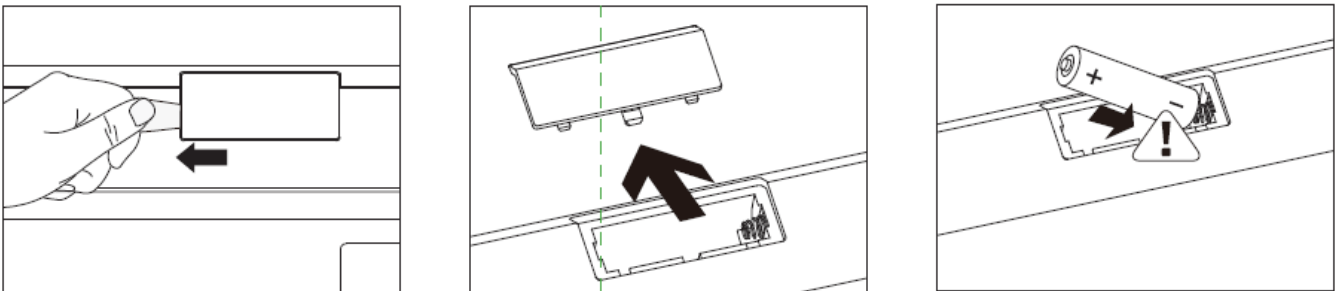
Instruction

Step 1





Step 2



Troubleshooting

See www.UncagedErgonomics.com for the latest FAQs, drivers and quick start guide. For more services and help, please register on www.UncagedErgonomics.com

It is forbidden to reproduce any part of this quick start guide without the permission of Uncageii Ergonomics.

Safety instructions

Do not open or repair this device. Do not use the device in a damp environment. Clean the device with a dry cloth.

FCC Warning

This device complies with Part 15 of the FCC Rules. Operation is subject to the following two conditions: (1) This device may not cause harmful interference, and (2) this device must accept any interference received, including interference that may cause undesired operation.

NOTE 1: This equipment has been tested and found to comply with the limits for a Class B digital device,

pursuant to part 15 of the FCC Rules. These limits are designed to provide reasonable protection against harmful interference in a residential installation. This equipment generates uses and can radiate radio frequency energy and, if not installed and used in accordance with the instructions, may cause harmful interference to radio communications. However, there is no guarantee that interference will not occur in a particular installation. If this equipment does cause harmful interference to radio or television reception, which can be determined by turning the equipment off and on, the user is encouraged to try to correct the interference by one or more of the following measures:

- Reorient or relocate the receiving antenna.
- Increase the separation between the equipment and receiver.
- Connect the equipment into an outlet on a circuit different from that to which the receiver is connected.
- Consult the dealer or an experienced radio/TV technician for help.

NOTE 2: Any changes or modifications to this unit not expressly approved by the party responsible for compliance could void the user’s authority to operate the equipment.

Documents / Resources



[UNCAGED ERGONOMICS KM1 Wireless Mouse and Keyboard Combo](#) [pdf] User Guide
K1, 2AYTQ-K1, 2AYTQK1, KM1 Wireless Mouse and Keyboard Combo, KM1, Wireless Mouse
and Keyboard Combo