



UMOVAL UM-X6 Smart Hidden Camera User Manual

[Home](#) » [UMOVAL](#) » UMOVAL UM-X6 Smart Hidden Camera User Manual 

UMOVAL

Smart Hidden Cameras
User's Manua

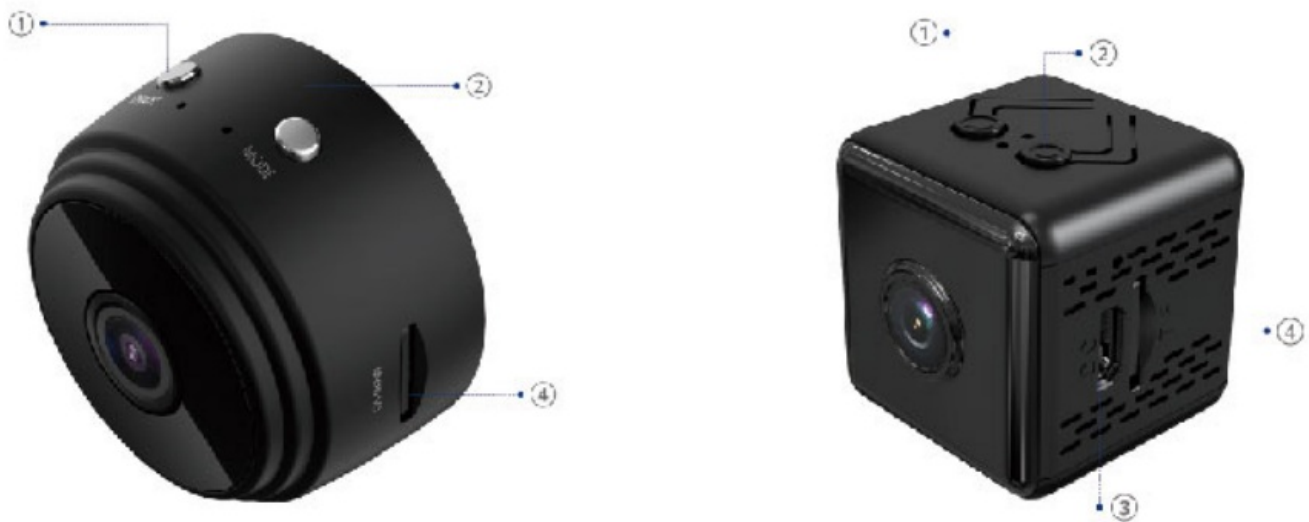


Thanks for purchasing UMOVAL hidden spy cameras! The User's Manual is made for the Model Numbers above. Please follow the instructions to set up your camera step by step.

Contents

- 1 Product Description
- 2 APP Settings
- 3 Two Ways to Operate the Device
- 4 How to Install the Camera?
- 5 Learn More about the Device
- 6 Customer Supports
- 7 Documents / Resources
 - 7.1 References
- 8 Related Posts

Product Description

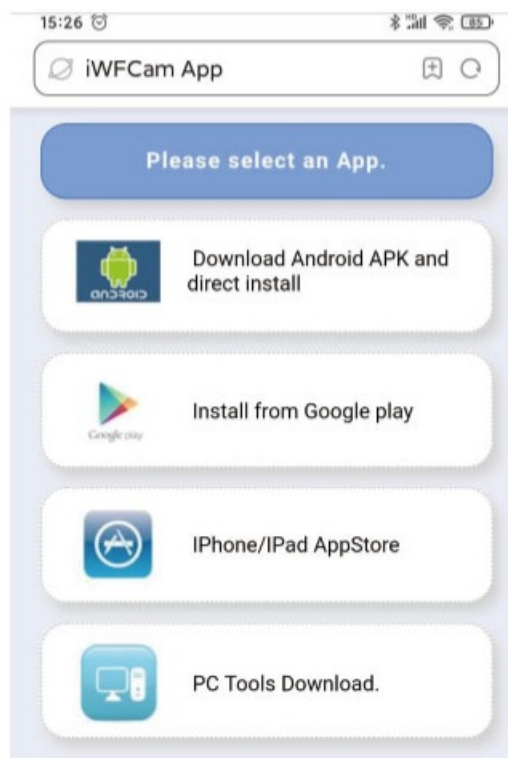


1. ON/OFF Press Button: Press once to turn ON. Press for 3 seconds to turn it OFF.
2. Reset Press Button: Press for 6 seconds to reset the camera.
3. Micro USB: Charging Port.
4. Micro SD Card Slot: Insert TF Micro SD Card to save local video recordings (Support Max 32GB, not included).

APP Settings

1. Download APP – iWFCam

Scan the QR code below to download the APP compatible with your smart phone system. Or please search the keyword “iWFCam” on Google Play or iOS AppStore to download the APP directly.



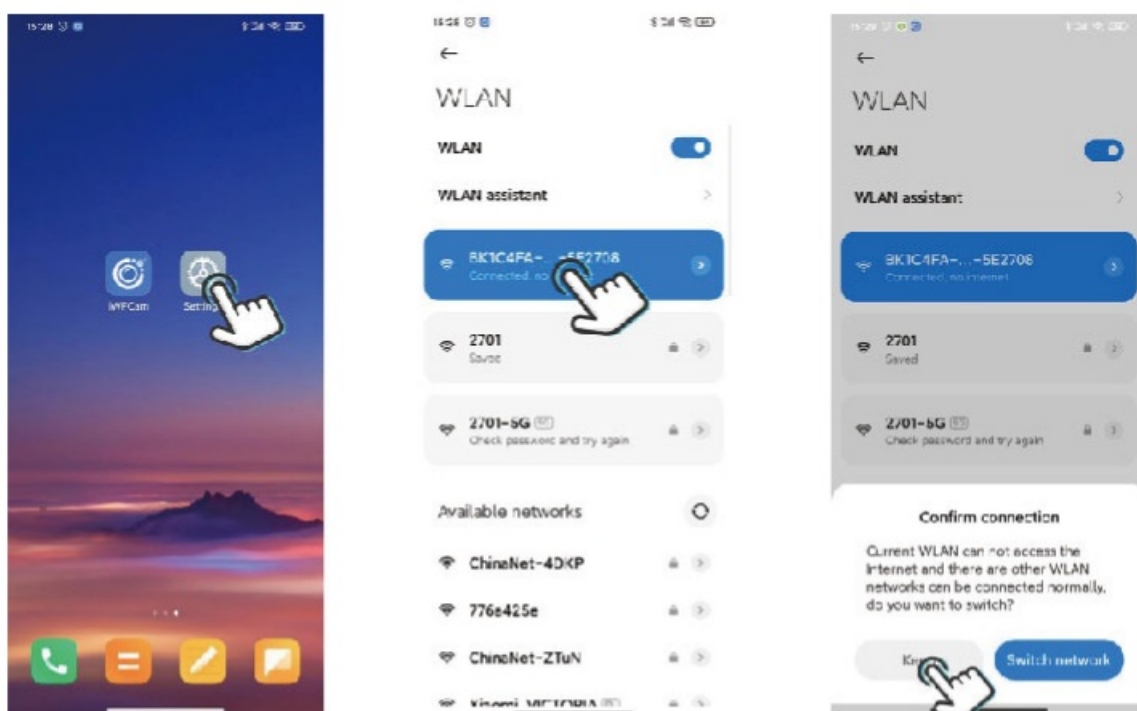
<http://app.iWFCam.com/app/iWFCam.html>

2. Connect the Camera and Smart Phone (AP Mode):

Step 1: Press ON/OFF button once to turn on the camera.

Step 2: Tap the button of Settings on your smart phone, and then tap the button of WLAN to find the camera hotspot signal (Displayed as BK*****), then connect it without password. Step 3: If you are using Android smart phones, a pop-up message will pop up to ask for Confirming Connection, and then please press the button of CONNECT to keep connecting with the camera.

Please refer to the screenshot pictures as below:



Note: Camera & Phone Connection should be done within 5 meters or 16 feet for strong signal.

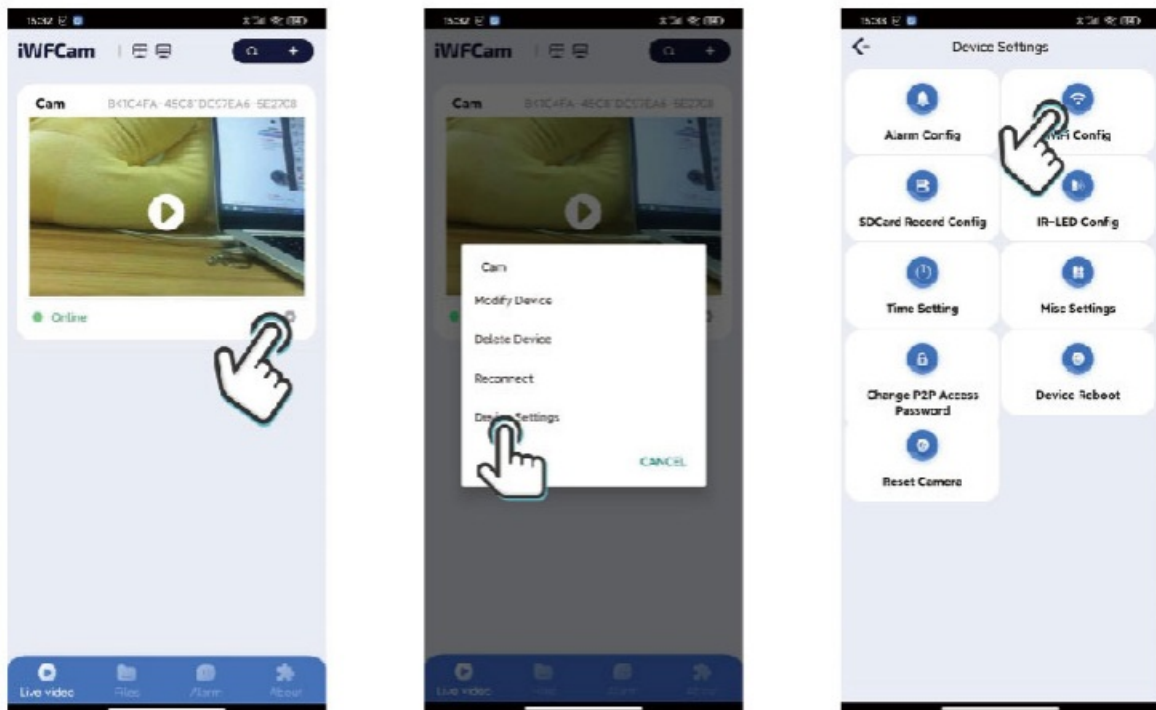
3. APP Remote Connection (IP Mode)

Step 1: Open the APP iWFCam, the camera will be added Online automatically.

Step 2: Click the Setting icon beside the camera on the APP interface, and then tap Device Settings, and set WiFi Config. Please choose your current router and enter the router network password.

Step 3: It is connected successfully for remote control when the interface is showing Online.

Please refer to the screenshot of pictures as below:



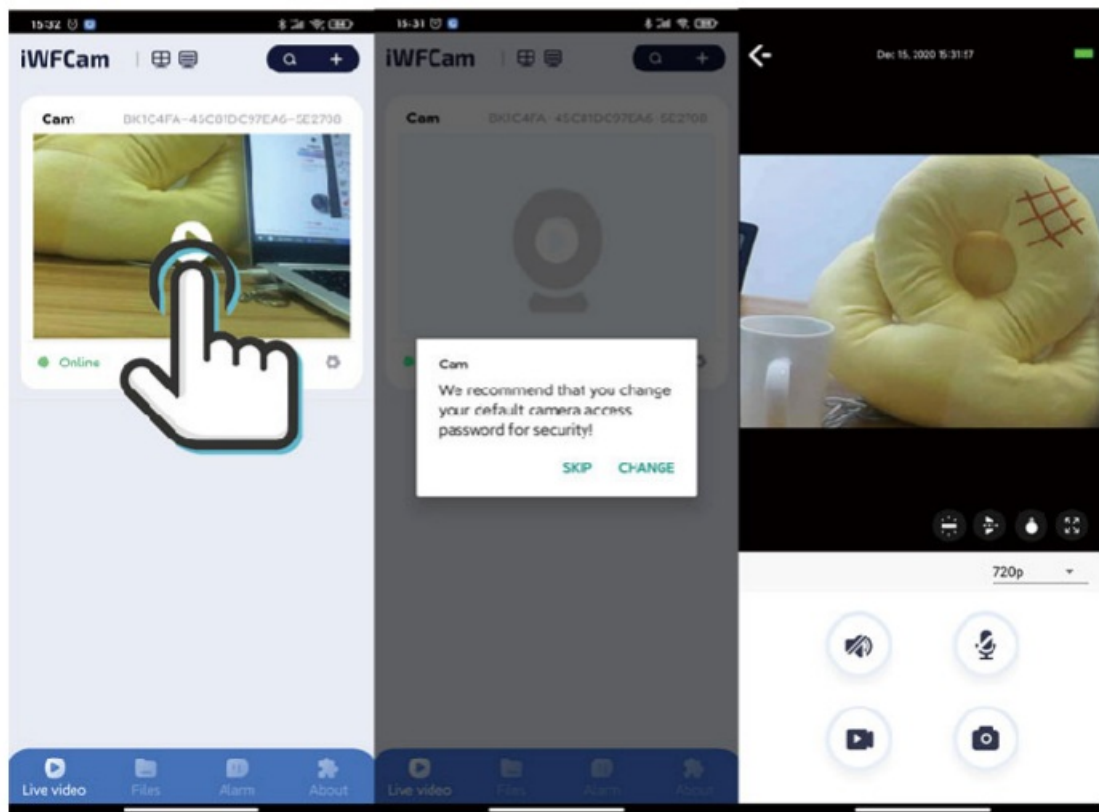
Note: The Connection between Camera and Router should be done within 5 meters or 16 feet for strong signal.

4. Live Viewing Interface Step

1: Click the camera on the APP interface, it will pop up a message asking to change the default access password for security. Please SKIP or CHANGE it for security. But please record the changed password on your memorandum book.

Step 2: Then you can see the live viewing interface, where you can adjust the Brightness, Night Vision, Video Resolution, Audio, Recording Video, Record Photo, etc. Please note that the Intercom is not supported on the device.

Please refer to the screenshot of pictures as below:



Two Ways to Operate the Device

1. The mini camera can run 1 or 3 hours continuously by built-in li-ion battery without charging cable. (UM-A9 can run for around 1 hour and UM-X6 for around 3 hour).
2. USB charging and connecting with power bank or power outlet to operate the camera 24 hours/7 days.



How to Install the Camera?

A magnetic holder is included in the package. Please have a try of it if necessary.

Step 1: Fixed the magnetic holder by the side with 3M glue on the target wall or other object surface.

Step 2: Fit the camera by a magnetic holder.

Learn More about the Device

1. Support Different Smart Devices by APP



iPhone



Android



iOS/Android Tablet

2. Remote Live Viewing on Smart Device APP

3. Support Only 2.4GHz WiFi Router The device only support 2.4GHz Wi-Fi router. Please note that 5GHz Wi-Fi router is not supported by the device.



4. Motion Detection Technology

The alarm message will be sent to your smart mobile phone once a movable human beings is detected.

5. Infrared Night Vision

The camera is built in with 6 pieces of infrared LEDs. Help to see clearly even in the dark for live viewing and video surveillance.

6. Only One-way Audio

Two-way audio is not supported on the device. But you can hear the voice at the scene by press the button of Audio.

7. About the Video Resolution

The camera is a very small hidden one and the video resolution is only up to 720x480P or 640x480P. We don't exaggerate the data in order to keep honest. Hopefully it can meet your normal requirements for video surveillance at such a price.

Customer Supports

UMOVAL is a honest company and we will sincerely do customer supports for all of customers if there are any

quality issues during the usages of the camera within the limited warranty period in 12 months since your order date. Our customer support email address is as below: service@umoval.com

Supplied by UMOVAL IoT Technology Co., Ltd <https://wwwv.umoval.com/>

FCC Caution:

This device complies with part 15 of the FCC Rules. Operation is subject to the following two conditions: (1) This device may not cause harmful interference, and (2) This device must accept any interference received, including interference that may cause undesired operation.

Any Changes or modifications not expressly approved by the party responsible for compliance could void the user's authority to operate the equipment

Note: This equipment has been tested and found to comply with the limits for a Class B digital device, pursuant to part 15 of the FCC Rules. These limits are designed to provide reasonable protection against harmful interference in a residential installation This equipment generates uses and can radiate radio frequency energy and, if not installed and used in accordance with the instructions, may cause harmful interference to radio communications However, there is no guarantee that interference will not occur in a particular installation. If this equipment does cause harmful interference to radio or television reception, which can be determined by turning the equipment off and on, the user is encouraged to try to correct the interference by one or more of the following measures:

- Reorient or rebcate the receiving antenna.
- Increase the separation between the equipment and receiver.
- Connect the equipment into an outlet on a circuit different from that to which the receiver is connected.
- Consult the dealer or an experienced radio/TV technician for help

The device has been evaluated to meet general RF exposure requirement. The device can be used in portable exposure condition without restriction. Thanks!

Model No:

UM-X6	U M-A9
UM-X6-BLACK	UM-T8
U M-X6-WHITE	UM-K8
U M-X7	UM-X9
U M-X8	UM-X10

FCC Statement

Changes or modifications not expressly approved by the party responsible for compliance could void the user's authority to operate the equipment.




This equipment has been tested and found to comply with the limits for a Class B digital device, pursuant to Part 15 of the FCC Rules. These limits are designed to provide reasonable protection against harmful interference in a residential installation. This equipment generates uses and can radiate radio frequency energy and, if not installed and used in accordance with the instructions, may cause harmful interference to radio communications. However, there is no guarantee that interference will not occur in a particular installation. If this equipment does cause harmful interference to radio or television reception, which can be determined by turning the equipment off and on, the user is encouraged to try to correct the interference by one or more of the following measures:

- Reorient or relocate the receiving antenna.
- Increase the separation between the equipment and receiver.
- Connect the equipment into an outlet on a circuit different from that to which the receiver is connected.
- Consult the dealer or an experienced radio/TV technician for help

This device complies with part 15 of the FCC rules. Operation is subject to the following two conditions (1)this

device may not cause harmful interference, and (2) this device must accept any interference received, including interference that may cause undesired operation. This equipment complies with FCC radiation exposure limits set forth for an uncontrolled environment.

Documents / Resources

<div><p>Smart Hidden Cameras</p><p>User's Manual</p><div></div><p><small>Thanks for purchasing UMOVAL hidden spy camera! The User's Manual is made for the listed hardware below. Please follow the instructions to set up your camera using the steps.</small></p></div>	<p>UMOVAL UM-X6 Smart Hidden Camera [pdf] User Manual</p> <p>UM-X6, Smart Hidden Camera, UM-X6 Smart Hidden Camera, Hidden Camera, Camera, UM-A9, UM-X6-BLACK, UM-T8, UM-X6-WHITE, UM-K8, UM-X7, UM-X9, UM-X8, UM-X10</p>
--	---

References

- [A Security IP Cameras | CCTV, Access Control, Parking System | IoT Solutions Supplier - UMOVAL](#)