



UMOVAL UM-A9 Hidden Spy Cameras User Manual

[Home](#) » [UMOVAL](#) » UMOVAL UM-A9 Hidden Spy Cameras User Manual 

UMOVAL UM-A9 Hidden Spy Cameras User Manual



Thanks for purchasing UMOVAL hidden spy cameras! The User's Manual is made for the Model Numbers above. Please follow the instructions to set up your camera step by step.

Contents

- [1 Product Description](#)
- [2 APP Settings](#)
- [3 Two Ways to Operate the Device](#)
- [4 How to Install the Camera?](#)
- [5 Learn More about the Device](#)
- [6 Customer Supports](#)
- [7 Documents / Resources](#)
- [8 Related Posts](#)

Product Description

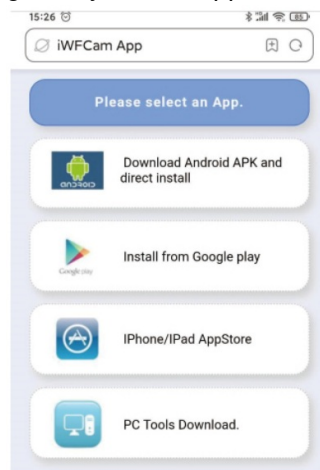


1. ON/OFF Press Button: Press once to turn ON. Press for 3 seconds to turn it OFF.
2. Reset Press Button: Press for 6 seconds to reset the camera.
3. Micro USB: Charging Port.
4. Micro SD Card Slot: Insert TF Micro SD Card to save local video recordings (Support Max 32GB, not included).

APP Settings

Download APP – iWFCam

Scan the QR code below to download the APP compatible with your smart phone system. Or please search the keyword “iWFCam” on Google Play or iOS AppStore to download the APP directly.



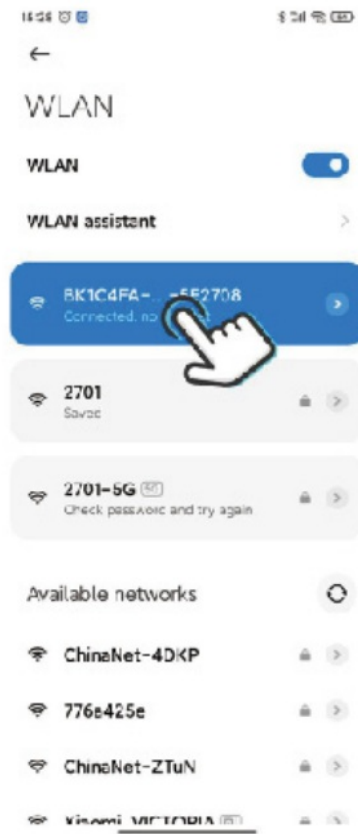
Connect the Camera and Smart Phone (AP Mode):

Step 1: Press ON/OFF button once to turn on the camera.

Step 2: Tap the button of Settings on your smart phone, and then tap the button of WLAN to find the camera hotspot signal (Displayed as BK****), then connect it without password.

Step 3: If you are using Android smart phones, a pop-up message will pop up to ask for Confirming Connection, and then please press the button of CONNECT to keep connecting with the camera.

Please refer to the screenshot pictures as below:



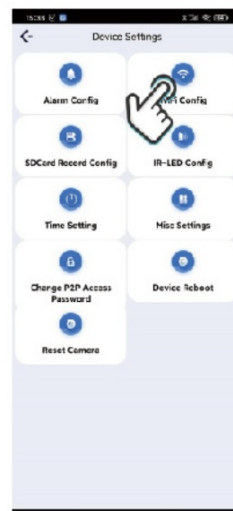
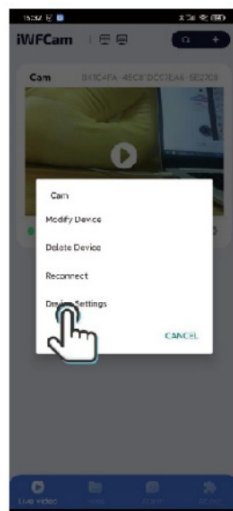
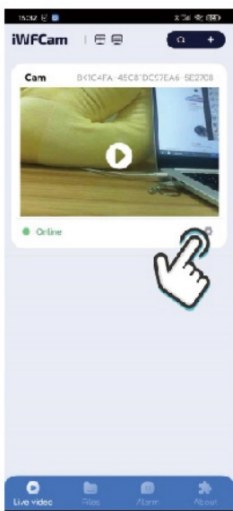
Note: Camera & Phone Connection should be done within 5 meters or 16 feet for strong signal.

APP Remote Connection (IP Mode)

Step 1: Open the APP iWFCam, the camera will be added Online automatically.

Step 2: Click the Setting icon beside the camera on the APP interface, and then tap Device Settings, and set WiFi Config. Please choose your current router and enter the router network password.

Step 3: It is connected successfully for remote control when the interface is showing Online. Please refer to the screenshot of pictures as below:



Note: The Connection between Camera and Router should be done within 5 meters or 16 feet for strong signal.

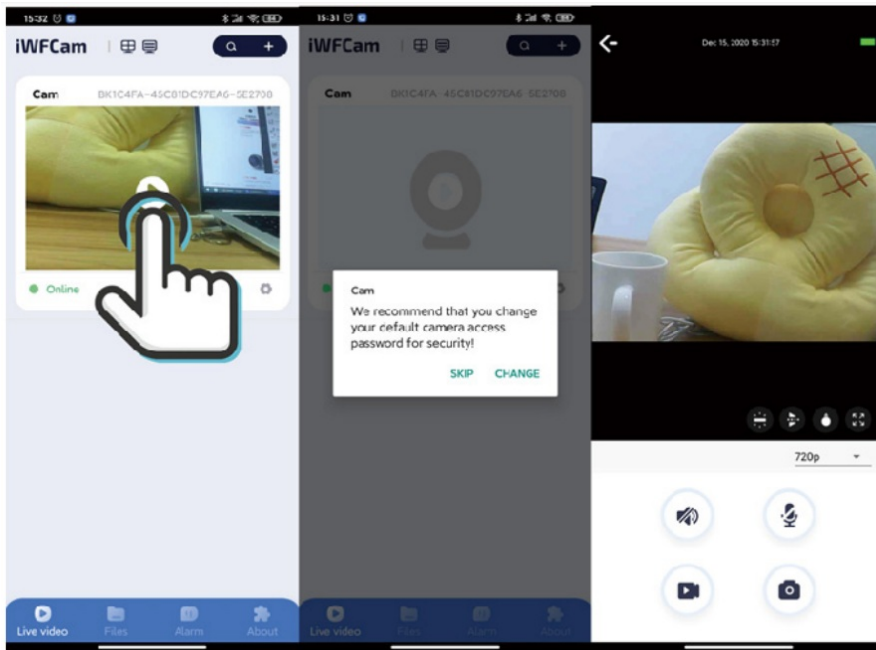
Live Viewing Interface

Step 1: Click the camera on the APP interface, it will pop up a message asking to change the default access password for security. Please SKIP or CHANGE it for security. But please record the changed password on your

memorandum book.

Step 2: Then you can see the live viewing interface, where you can adjust the Brightness, Night Vision, Video Resolution, Audio, Recording Video, Record Photo, etc. Please note that the Intercom is not supported on the device.

Please refer to the screenshot of pictures as below:



Two Ways to Operate the Device

1. The mini camera can run 1 or 3 hours continuously by built-in li-ion battery without charging cable. (UM-A9 can run for around 1 hour and UM-X6 for around 3 hour).
2. USB charging and connecting with power bank or power outlet to operate the camera 24 hours/7 days.



How to Install the Camera?

A magnetic holder is included in the package. Please have a try of it if necessary.

Step 1: Fixed the magnetic holder by the side with 3M glue on the target wall or other object surface.

Step 2: Fit the camera by a magnetic holder.

Learn More about the Device

1. Support Different Smart Devices by APP



2. Remote Live Viewing on Smart Device APP

3. Support Only 2.4GHz WiFi Router The device only support 2.4GHz Wi-Fi router. Please note that 5GHz Wi-Fi router is not supported by the device.



4. Motion Detection Technology The alarm message will be sent to your smart mobile phone once a movable human beings is detected.
5. Infrared Night Vision The camera is built in with 6 pieces of infrared LEDs. Help to see clearly even in the dark for live viewing and video surveillance.
6. Only One-way Audio Two-way audio is not supported on the device. But you can hear the voice at the scene by press the button of Audio.
7. About the Video Resolution The camera is a very small hidden one and the video resolution is only up to 720x480P or 640x480P. We don't exaggerate the data in order to keep honest. Hopefully it can meet your normal requirements for video surveillance at such a price.

Customer Supports

UMOVAL is a honest company and we will sincerely do customer supports for all of customers if there are any quality issues during the usages of the camera within the limited warranty period in 12 months since your order date. Our customer support email address is as below: service@umoval.com

Supplied by UMOVAL IoT Technology Co., Ltd
<https://www.umoval.com/>



Documents / Resources

<div data-bbox="165 91 250 136" data-label="Image"></div> <div data-bbox="159 154 256 168" data-label="Text"><p>Hidden Spy Cameras</p></div> <div data-bbox="148 176 266 197" data-label="Section-Header"><p>User's Manual</p></div> <div data-bbox="142 232 271 309" data-label="Image"></div> <div data-bbox="134 358 276 383" data-label="Text"><p>Thanks for purchasing UMOVAL hidden spy camera! The User's Manual is made for the listed numbers above. Please follow the instructions to set up your camera using the steps.</p></div>	<div data-bbox="317 219 1185 286" data-label="Text"><p>UMOVAL UM-A9 Hidden Spy Cameras [pdf] User Manual UM-A9, UM-X6, Hidden Spy Cameras, Spy Cameras, UM-A9, Cameras</p></div>
<div data-bbox="127 448 288 564" data-label="Image"></div>	<div data-bbox="317 474 1372 542" data-label="Text"><p>UMOVAL UM-A9 Hidden SPY Cameras [pdf] User Manual UM-A9, Hidden SPY Cameras, UM-A9 Hidden SPY Cameras, SPY Cameras, Cameras</p></div>