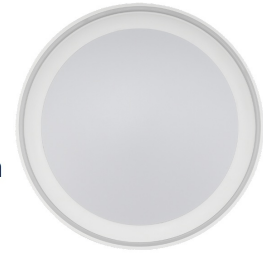


UltraLux®

**SPL45CCTW**  
**Ceiling Light With**  
**Remote Control**



## UltraLux SPL45CCTW Ceiling Light With Remote Control Installation Guide

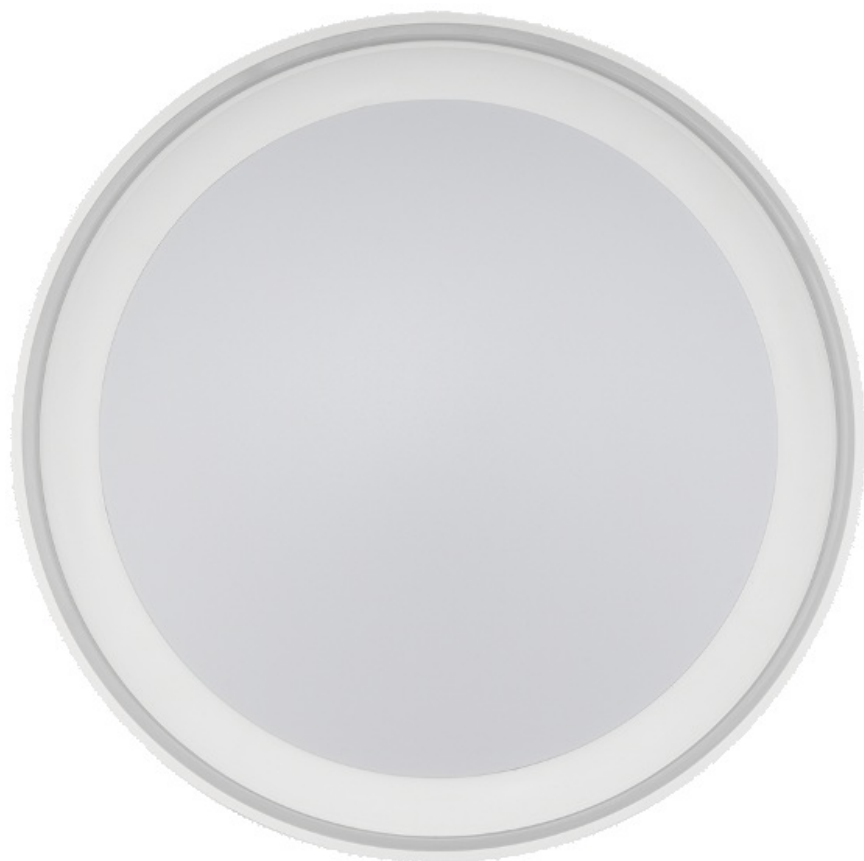
[Home](#) » [ULTRALUX](#) » UltraLux SPL45CCTW Ceiling Light With Remote Control Installation Guide 

### Contents

- [1 UltraLux SPL45CCTW Ceiling Light With Remote Control](#)
- [2 TECHNICAL PARAMETERS](#)
- [3 SAFETY INSTRUCTIONS](#)
- [4 MOUNTING](#)
- [5 DESCRIPTION OF THE REMOTE CONTROL](#)
- [6 MEMORY FUNCTION WHEN POWER IS TURNED OFF](#)
- [7 Documents / Resources](#)
  - [7.1 References](#)
- [8 Related Posts](#)

**UltraLux®**

**UltraLux SPL45CCTW Ceiling Light With Remote Control**



## TECHNICAL PARAMETERS

- **Power:** ..... .45W
- **Supply voltage:** ..... 220-240 V AC/ 50-60 Hz
- **Displacement factor:** ..... DF.:0.9
- **Luminous flux:** ..... 4800 lm
- **Dimming range:** .....1 0%-100%
- **Correlated color temperature:** .....3000 K – 6000 K
- **Color rendering index:** ..... Ra.: 80
- **Beam angle:** ..... 120°
- **Control method:** ..... IR remote control
- **Control range:** .....1 0 m (open area)
- **Battery:** ..... 2×1.5V rnn AAA
- **Dimensions:** ..... 0480×70 mm
- **IP rate:** ..... IP20
- **Warranty:** ..... 2 years

## SAFETY INSTRUCTIONS

- Performing any actions while electric voltage is applied carries a potential risk of electric shock.
- The power supply must be disconnected before starting any work.
- The product should be connected to a power supply of a proper electrical installation, meeting the requirements of a qualified specialist.
- The product installation should be carried out by the provided diagram.

- The product may heat up during operation, so please wait for it to cool down before replacement.
- Clean with a dry cloth.
- Do not cover the product. To avoid the risk of fire, ensure free access of air to the heating elements.
- If the power cable of the product is damaged, it must be replaced by the manufacturer, its authorized representative, or a technically qualified specialist to prevent accidents and damage.
- Before turning on the luminaire, make sure that its installation has been done correctly, eliminating the risk of malfunction, hazards to the environment, and users.
- The importer (supplier) is not responsible for damages resulting from failure to follow the above installation recommendations.



#### **TAKING CARE OF THE NATURAL ENVIRONMENT CLEANLINESS**

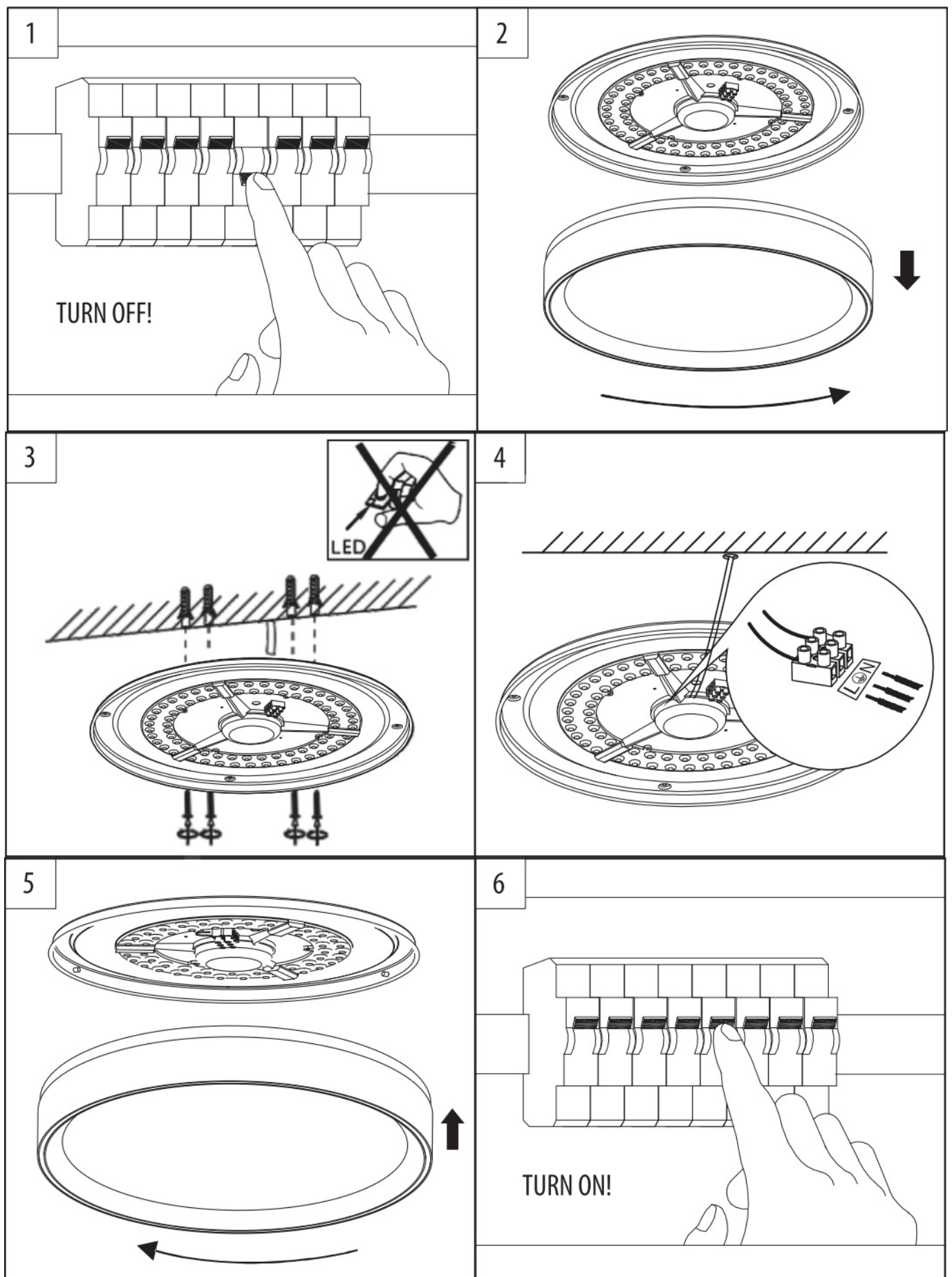
1. The product and its components are not harmful to the environment.
2. Please dispose the package elements separately in containers for the corresponding material.
3. Please dispose the broken product separately in containers for out-of-usage electrical A-equipment.

#### **MOUNTING**

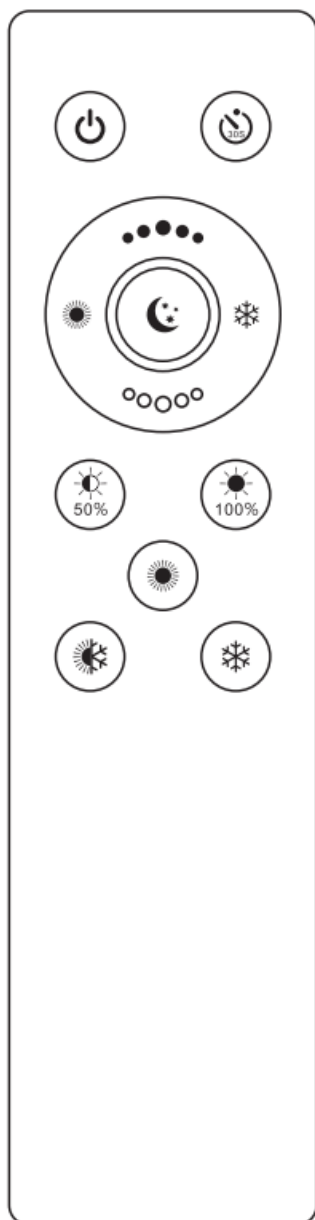
1. Turn off the power supply before starting any work.
2. Disassemble the ceiling lamp. Rotate the diffuser counterclockwise while keeping the base stationary.
3. Fix the base to the mounting surface using appropriate fasteners (you can use the included mounting fasteners).
4. Connect the ceiling lamp to the power cable following the provided wiring diagram:

**L (brown) – Line      N (blue) – Neutral       (yellow-green) – Ground**

5. Mount the diffuser onto the base of the ceiling lamp. Rotate the diffuser clockwise.

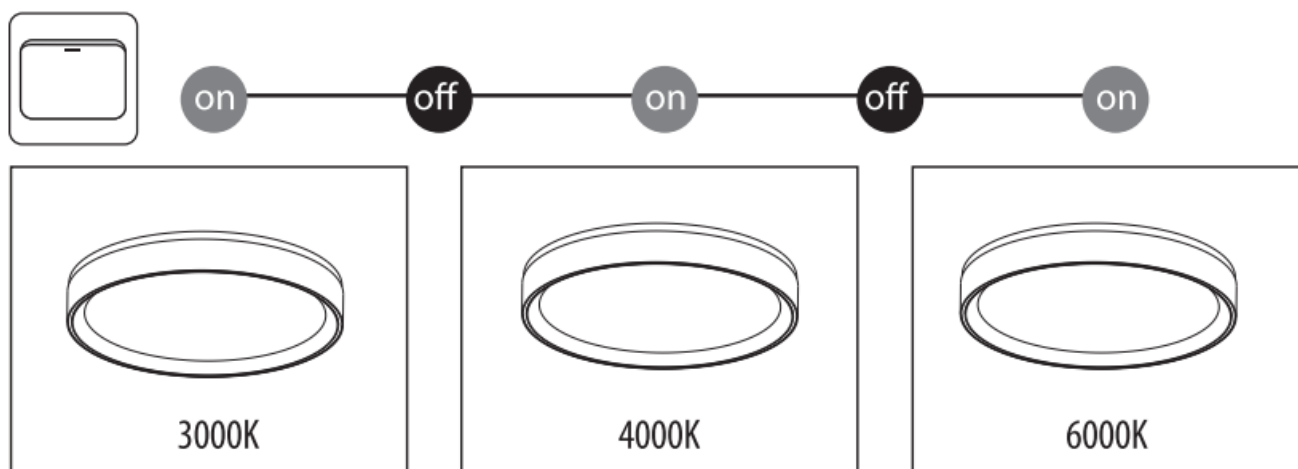


## DESCRIPTION OF THE REMOTE CONTROL



	Turn On/Off button
	Automatic shutdown after 30 seconds
	Adjustment of color temperature from cool to warm.
	Adjustment of color temperature from warm to cool.
	Gradual increase of brightness to 100%
	Gradual decrease of brightness to 10%
	Night Light mode
	Fixing at 50% brightness at the selected color temperature
	Fixing at 100% brightness at the selected color temperature
	Fixing at 100% brightness in warm light
	Fixing at 100% brightness in neutral light
	Fixing at 100% brightness in cool light

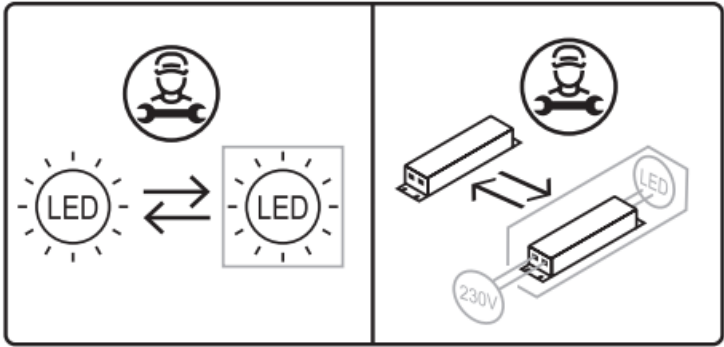
## MEMORY FUNCTION WHEN POWER IS TURNED OFF




1. Adjust the brightness and color temperature of the ceiling lamp according to your preferences.
2. Allow the LED ceiling lamp to operate in the selected mode for more than 5 seconds.
3. In case of a power outage and subsequent restoration (turning off and on using the wall switch), the ceiling light will operate with the saved settings.

4. Rapid power toggles where the ceiling light operates for less than 5 seconds will result in a change of the light's color temperature to 3000K-> 4000K-> 6000K.

This product contains a light source of energy efficiency class E.



Documents / Resources

	<a href="#">UltraLux SPL45CCTW Ceiling Light With Remote Control</a> [pdf] Installation Guide SPL45CCTW Ceiling Light With Remote Control, SPL45CCTW, Ceiling Light With Remote Control, Light With Remote Control, With Remote Control, Remote Control, Control
---	---

References

- [User Manual](#)

[Manuals+](#), [Privacy Policy](#)

This website is an independent publication and is neither affiliated with nor endorsed by any of the trademark owners. The "Bluetooth®" word mark and logos are registered trademarks owned by Bluetooth SIG, Inc. The "Wi-Fi®" word mark and logos are registered trademarks owned by the Wi-Fi Alliance. Any use of these marks on this website does not imply any affiliation with or endorsement.