



UltraLux RPG2B Track Lighting Fixture Installation Guide

[Home](#) » [ULTRALUX](#) » UltraLux RPG2B Track Lighting Fixture Installation Guide 

Contents

- [1 UltraLux RPG2B Track Lighting Fixture](#)
- [2 POWER BUTTON](#)
- [3 INSTRUCTIONS FOR INSTALLATION OF TRACK LIGHTING FIXTURE](#)
- [4 Documents / Resources](#)
 - [4.1 References](#)
- [5 Related Posts](#)

UltraLux®

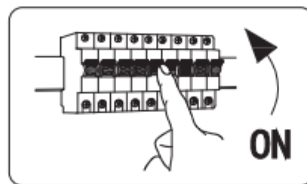
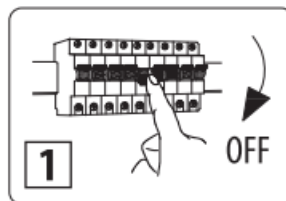
UltraLux RPG2B Track Lighting Fixture



MODEL: RPG2B, RPG2G, RPG2W

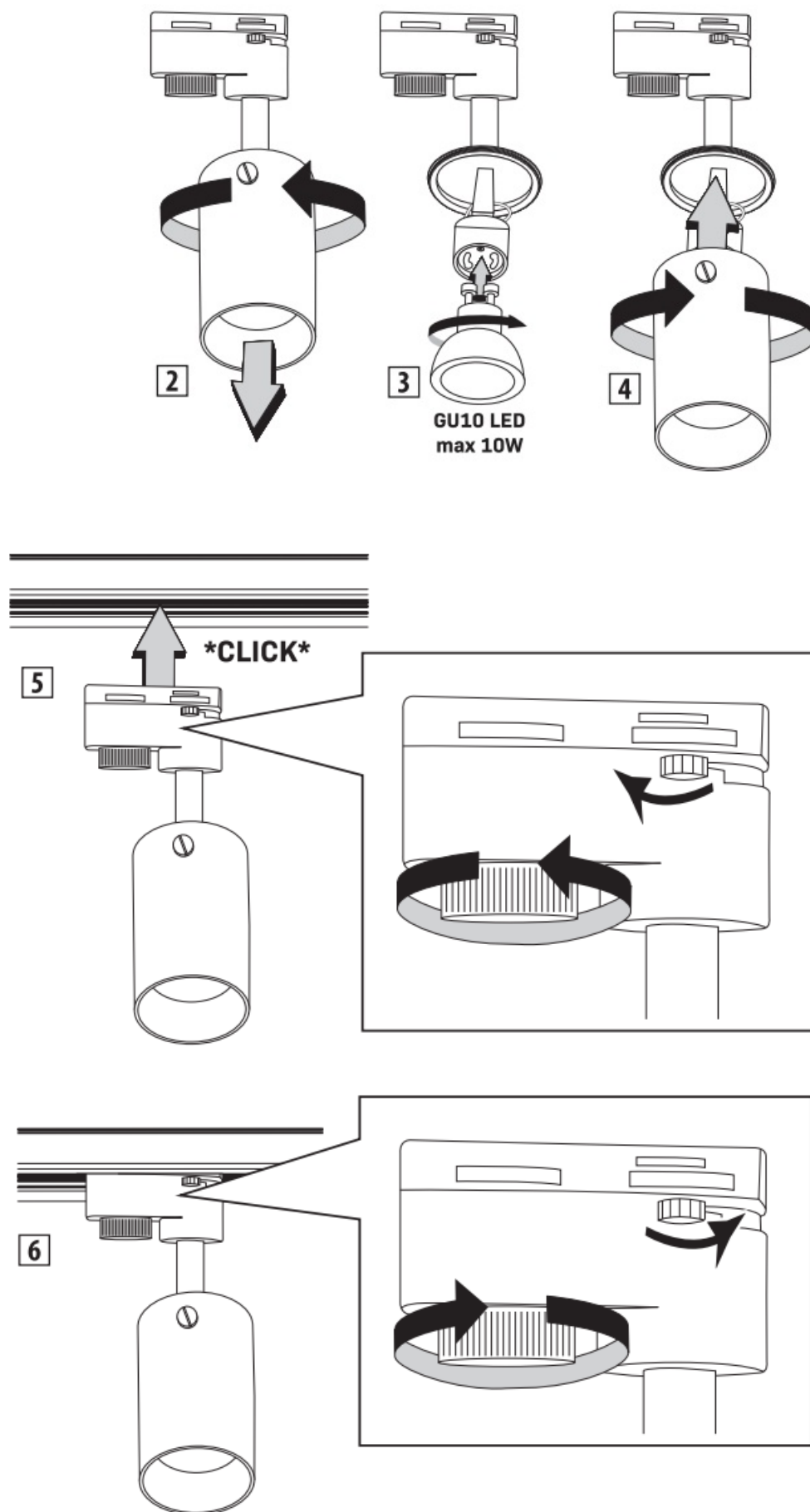
POWER BUTTON

ON/OFF



INSTRUCTIONS FOR INSTALLATION OF TRACK LIGHTING FIXTURE

1. Disconnect power supply before installation or replacement.
2. Loosen the cylindrical section of the body as shown in the diagram.
3. Install the desired light source.
4. Screw the cylindrical section back in place.
5. Turn the large and small locks in the indicated directions to slide the clamp and contact plates into the housing.
6. Insert the socket of the body into the power rail.
7. Holding the body in this way, rotate the large and small clamps in the indicated directions to fix.



- Performing any activity with the power supply on constitutes potential hazard of electric shock. Prior to mounting, power supply must be switched off by using the main switch.
- The fixture, when properly assembled, may only be connected to a properly functioning electrical system with compliance with applicable standards.

- Activities related to connection to the power supply are to be commissioned to a person with appropriate authorization.
- Clean only with dry cloth.
- Do not cover the fixture. To avoid any fire hazard, provide unrestricted air flow to the heated fitting parts.
- If the external flexible cable or cord of this luminaire is damaged, it shall be exclusively replaced by the manufacturer or his service agent or a similar qualified person in order to avoid a hazard.
- Prior to starting operating, make sure the mounting of the product has been performed appropriately. Eliminating the hazard of defective operation, not endangering the surrounding and the users.
- The importer/supplier bears no responsibility for damages resulting from failure to comply with these instructions.


TAKING CARE OF THE NATURAL ENVIRONMENT CLEANLINESS



- The product and its components are not harmful to the environment.
- Please dispose the package elements separately in containers for the corresponding material.
- Please dispose the broken product separately in containers for out of usage electrical equipment.



Documents / Resources

	<p>UltraLux RPG2B Track Lighting Fixture [pdf] Installation Guide RPG2B, RPG2G, RPG2W, RPG2B Track Lighting Fixture, RPG2B, Track Lighting Fixture, Lighting Fixture, Fixture</p>
---	---

References

- [User Manual](#)