

UltraLux®

**UltraLux
MSD2460 Dual
Function IR
Sensor**



UltraLux MSD2460 Dual Function IR Sensor Instruction Manual

[Home](#) » [ULTRALUX](#) » UltraLux MSD2460 Dual Function IR Sensor Instruction Manual 

Contents

- [1 UltraLux MSD2460 Dual Function IR Sensor](#)
- [2 TECHNICAL SPECIFICATIONS](#)
- [3 SAFETY INSTRUCTIONS](#)
- [4 WIRING DIAGRAM](#)
- [5 Documents / Resources](#)
 - [5.1 References](#)
- [6 Related Posts](#)

UltraLux®

UltraLux MSD2460 Dual Function IR Sensor



INSTRUCTIONS FOR EXPLOITATION

DUAL FUNCTION IR SENSOR

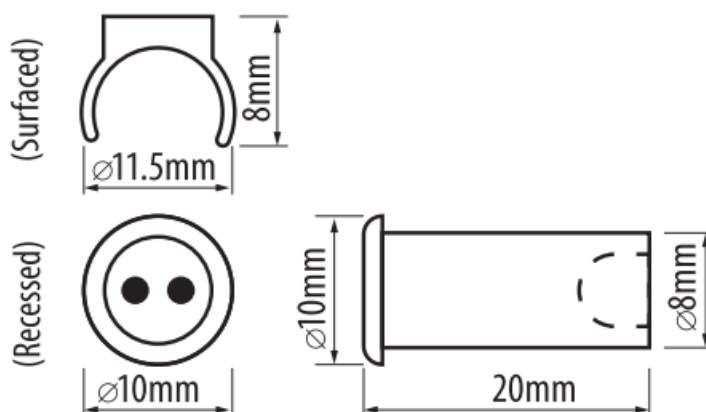
DUAL FUNCTION IR SENSOR – MODEL: MSD2460



THE INSTALLATION SHOULD BE PERFORMED BY A QUALIFIED ELECTRICIAN ACCORDING TO THIS MANUAL. PLEASE KEEP THE INSTRUCTIONS.

TECHNICAL SPECIFICATIONS

- Voltage: 12/24 V DC
- Rated load: 60 W
- Detections distance: 5 cm
- Detection range: 10°
- Cable length: 1000 mm
- IP rate: IP20



DESCRIPTION

The product consists of a small infrared sensor with a controller. It has two operating modes that can be switched using a button located on the housing.

PROXIMITY SENSOR MODE: The sensor monitors the position of moving objects (doors, drawers). If an obstacle appears within the sensor's range (such as closing the cabinet door), the controller will turn off the LED lighting. If the obstacle within the range of the sensor disappears (such as opening the cabinet door), the controller will turn

on the LED lighting. The main application of the product is the automation of furniture LED lighting (cabinets, wardrobes, shelves, drawers, buffets, etc.).

PROXIMITY SWITCH MODE: The sensor monitors moving objects. When a single, short-duration movement (such as a hand wave) occurs within the sensor's detection range, the controller will turn on the LED lighting. If a repeated movement (such as a hand wave) occurs again within the sensor's detection range, the controller will turn off the LED lighting.

Note: After a power outage and its restoration, the furniture IR sensor in "PROXIMITY SWITCH MODE " always starts with the LED lighting turned off.

SAFETY INSTRUCTIONS

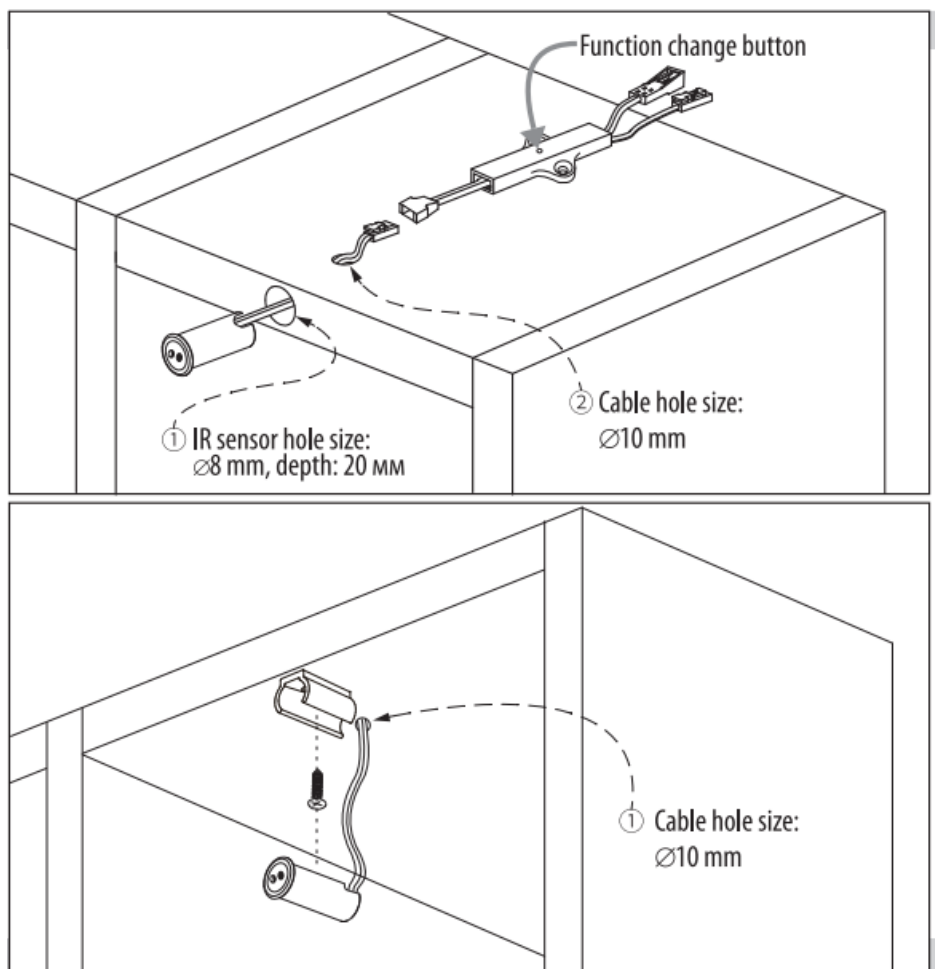
- Performing any actions while electrical voltage is present carries the potential risk of electric shock. The power supply must be disconnected before starting any work.
- Before replacement, disconnect from the electrical grid.
- The installation should be carried out in accordance with the current instructions by a qualified professional.
- All conductors and fitting auxiliary components are to be placed at an appropriate distance from the heating parts of the fitting. When choosing the place for mounting, the required minimum distance must be kept between the fitting and the lightened objects.
- The sensor is designed for indoor installation and must be used in places with normal levels of humidity and dust – IP20 protection rating.
- The manufacturer bears no responsibility for damages resulting from failure to comply with these instructions.

RECESSED INSTALLATION

1. Drill a hole with a diameter of 08 mm and a depth of 20 mm, then place the sensor into it.
2. Drill a hole with a diameter of 010 mm and pass the connecting wires of the sensors through it.
3. Connect the OUTPUT connector to the load (LED lighting) and connect the INPUT connector to the power supply for the LED lighting.

SURFACE INSTALLATION

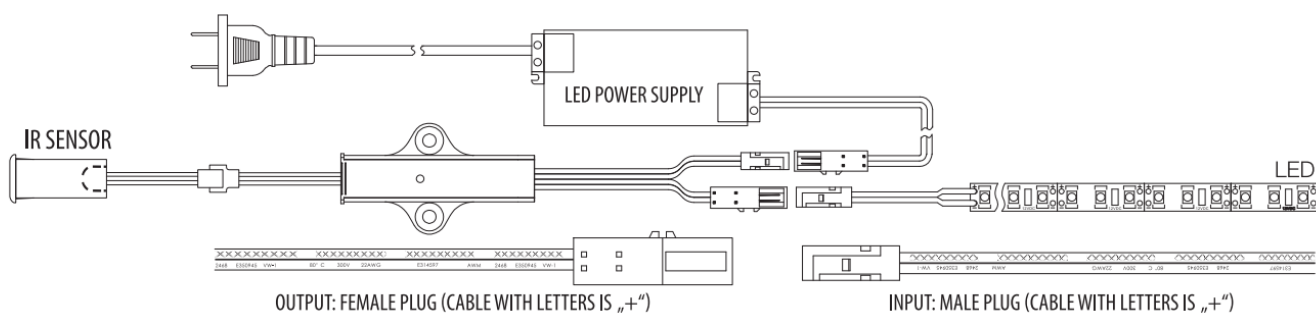
1. Mount the surface mounting bracket.
2. Drill a hole with a diameter of 010 mm and pass the connecting wires of the sensors through it.
3. Connect the OUTPUT connector to the load (LED lighting) and connect the INPUT connector to the power supply for the LED lighting.



NOTES

- For indoor use only.
- Do not disassemble the product.
- Do not install the product in places with high humidity.
- Use dry cloth, never a strong cleaning agent.
- Replace the whole set in case of malfunction.
- Ensure cooling to prevent a risk of fire.
- The product is intended exclusively for LED lighting.
- The product is intended exclusively for LED lighting.

WIRING DIAGRAM




TAKING CARE OF THE NATURAL ENVIRONMENT CLEANLINESS

The product and its components are not harmful to the environment. Please dispose the package elements

separately in containers for the corresponding material. Please dispose the broken product separately in containers for out of usage electrical equipment.



Documents / Resources

	<p>UltraLux MSD2460 Dual Function IR Sensor [pdf] Instruction Manual MSD2460 Dual Function IR Sensor, MSD2460, Dual Function IR Sensor, Function IR Sensor, IR Sensor, Sensor</p>
---	---

References

- [User Manual](#)

[Manuals+](#), [Privacy Policy](#)

This website is an independent publication and is neither affiliated with nor endorsed by any of the trademark owners. The "Bluetooth®" word mark and logos are registered trademarks owned by Bluetooth SIG, Inc. The "Wi-Fi®" word mark and logos are registered trademarks owned by the Wi-Fi Alliance. Any use of these marks on this website does not imply any affiliation with or endorsement.