

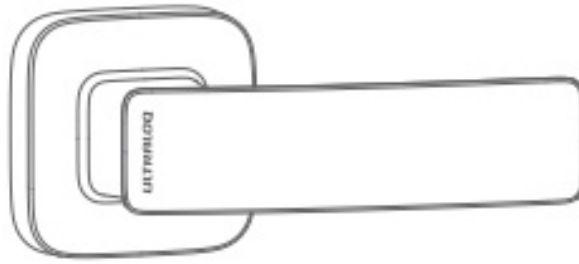
ULTRALOG V21 Handle Push Pull Installation Guide

[Home](#) » [Ultralog](#) » ULTRALOG V21 Handle Push Pull Installation Guide 

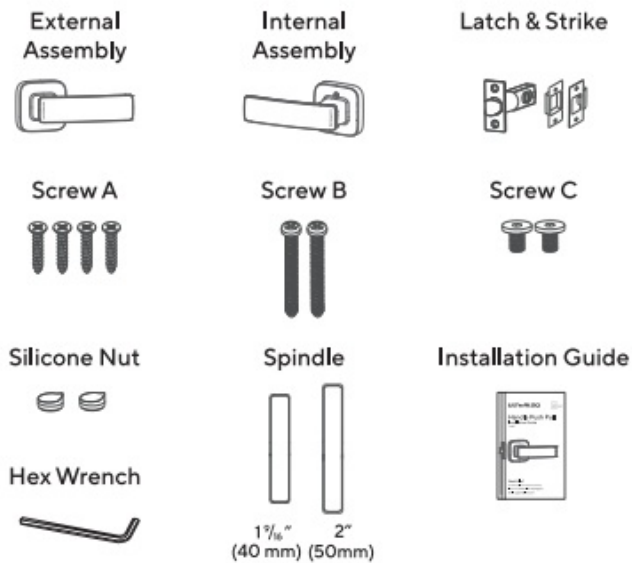
Contents

- [1 ULTRALOG V21 Handle Push Pull Installation Guide](#)
- [2 What,s in the box](#)
- [3 Notes](#)
- [4 Spindle Preparation](#)
- [5 Handle Preparations](#)
- [6 Default](#)
- [7 Optional](#)
- [8 For outswinging door](#)
 - [8.1 Preparing the Door](#)
- [9 STEP1](#)
- [10 STEP2](#)
- [11 STEP3](#)
- [12 Step 1](#)
- [13 Step2](#)
- [14 STEP4](#)
- [15 Testing the handle](#)
- [16 Warranty Statement](#)
- [17 Read More About This Manual & Download PDF:](#)
- [18 Documents / Resources](#)
 - [18.1 References](#)

ULTRALOCK V21 Handle Push Pull Installation Guide



What's in the box



Notes

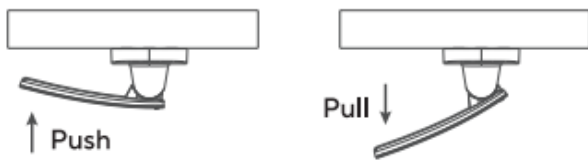
- Do not use a power drill for installation.
- Install and test the handle with the door open to avoid being locked out.
- Please read all the instructions before contacting customer support.
- Please contact customer support before returning the product to the store.
- Follow the instructions in sequential order.

Spindle Preparation

There are two spindles to suit doors of different thicknesses. The short spindle is 1 1/8" (40mm), suit for thickness from 15" (35mm) to 17" (40mm). The long spindle is 2" (50mm), suit for thickness from 1", (45mm) to 2" (50mm).

Handle Preparations

There are two methods to operate the handle, they are push and pull.



Default

In the default mode, there is no need to install screw C.

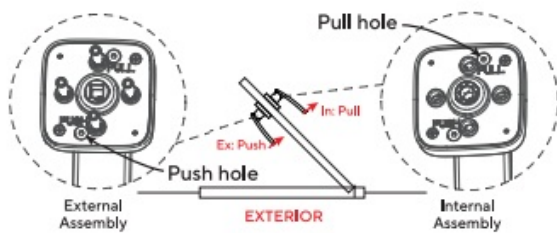
In this case, the door handle on either side can be operated by both pushing and pulling (with the internal and external handles remaining parallel).

If you want to ensure that each side of the door handle has a consistent operating method, please consider the following optional steps.

Optional

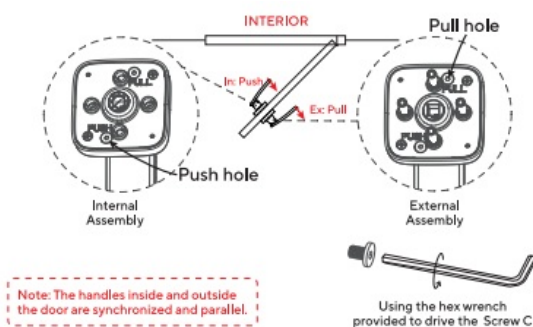
For inswinging door

1. Insert Screw C into Push hole of the External Assembly.
2. Insert Screw C into Pull hole of the Internal Assembly.



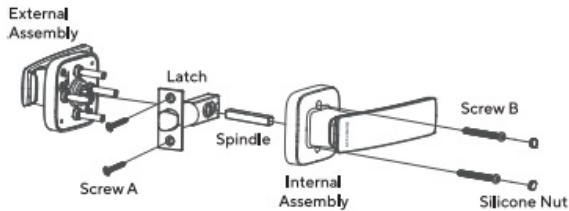
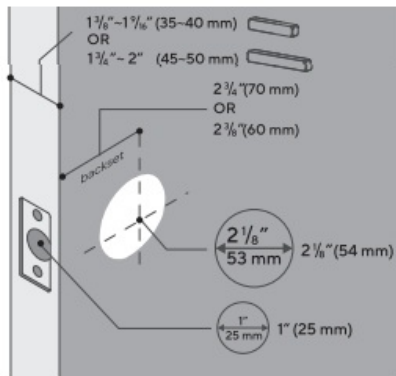
For outswinging door

1. Insert Screw C into Pull hole of the External Assembly.
2. Insert Screw C into Push hole of the Internal Assembly.



Preparing the Door

Please check the door's dimensions. If your door dimensions do not match, you will need to change your door preparation. Go to u-tec.com/collections/accessories to get the ULTRALQ Thick Door Kit.

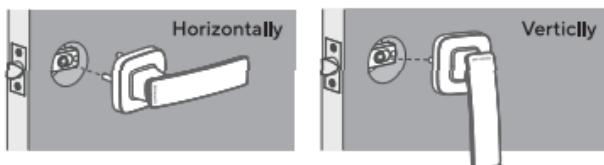


STEP1

1. Insert the Latch and Strike. Please align the Latch with the door's edge.
2. .Tighten 2 Screws A on each side to fix the position.

STEP2

Installing the exterior assembly Place the exterior assembly horizontally or vertically . Align the spindle with the slot in the latch and slide it into place.

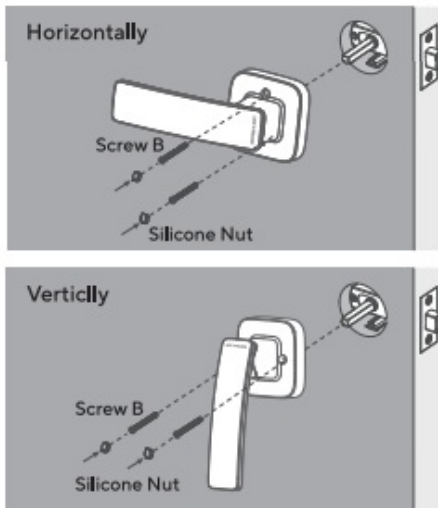


STEP3

Installing the interior assembly

Step 1

Place the interior assembly horizontally or vertically. Align the spindle with the slot in the interior assembly and slide it into place.



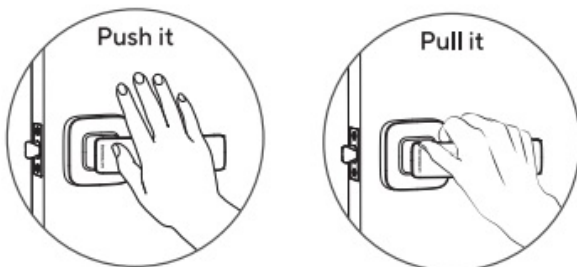
Step2

Tighten Screw B and insert Silicone Nut. Press both sides of the handle together while you tighten the screws to keep the outside and inside handle in place.

STEP4

Testing the handle

Push and/or Pull the handle, the latch should extend and retract smoothly. If it doesn't operate well, please follow the instructions and repeat the installation.

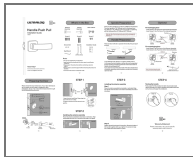


Warranty Statement

Please check www.u-tec.com for specific warranty details and limitations.

Read More About This Manual & Download PDF:

Documents / Resources



[ULTRALOQ V21 Handle Push Pull](#) [pdf] Installation Guide
V21 Handle Push Pull, V21, Handle Push Pull, Push Pull, Pull

References

- [User Manual](#)

Manuals+, Privacy Policy

This website is an independent publication and is neither affiliated with nor endorsed by any of the trademark owners. The "Bluetooth®" word mark and logos are registered trademarks owned by Bluetooth SIG, Inc. The "Wi-Fi®" word mark and logos are registered trademarks owned by the Wi-Fi Alliance. Any use of these marks on this website does not imply any affiliation with or endorsement.