




ULtraLoQ LATCH 5 Smart Fingerprint Lock User Guide

[Home](#) » [Ultralog](#) » ULtraLoQ LATCH 5 Smart Fingerprint Lock User Guide 

ULtraLoQ LATCH 5 Smart Fingerprint Lock



Contents

- 1 Ultraloq Terms & Policies
- 2 Need help?
- 3 Exterior
- 4 Interior
- 5 Add Lock to U-tec App
 - 5.1 Search on app store
 - 5.2 Download App
 - 5.3 Create Account
- 6 Add a New Device and Add a New User to the Lock
 - 6.1 Add the lock to the App through two options
 - 6.2 Overall Process for Adding a New User
- 7 Operate the Lock
 - 7.1 Unlock with Fingerprint
 - 7.2 Unlock with Code
 - 7.3 Unlock with App
- 8 FAQ
- 9 Documents / Resources
 - 9.1 References
- 10 Related Posts

Ultraloq Terms & Policies

Before using all Ultraloq products, please read all applicable terms, rules, policies and usage provisions found at www.u-tec.com/company/privacy. By using your Ultraloq, you agree to be bound by the U-tec Privacy Policy.

Need help?

To get help or learn more <https://support.u-tec.com>



Exterior



Low battery



Communication

0 – **9** Numbers

 Back  Enter

LED Indicator

Shows you authorized or denied access.

Touchscreen

Used to enter the code and unlock from the outside.

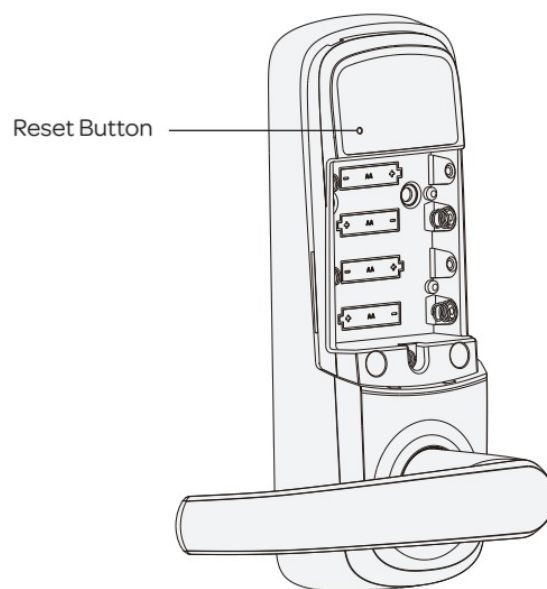
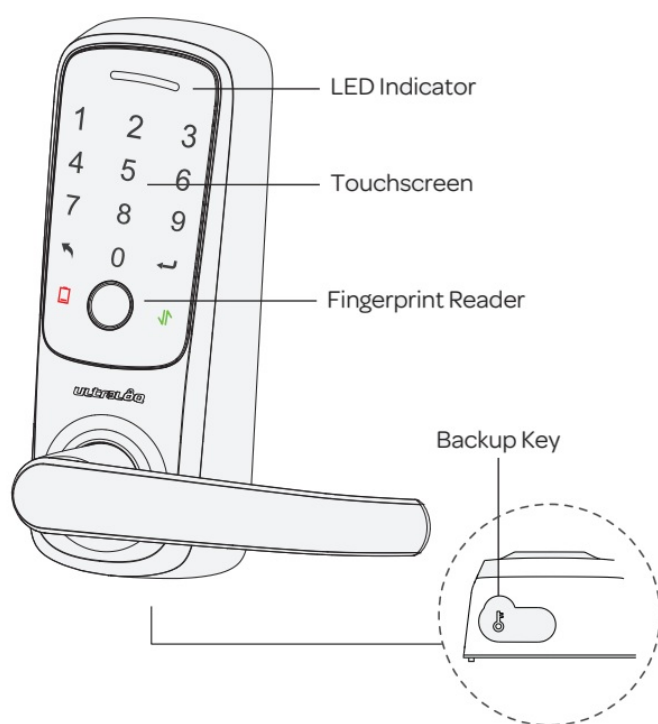
Fingerprint Reader

Read Fingerprint signals and unlock from the outside.

Backup Key Hole

Used to insert the key to unlock from outside.

Interior



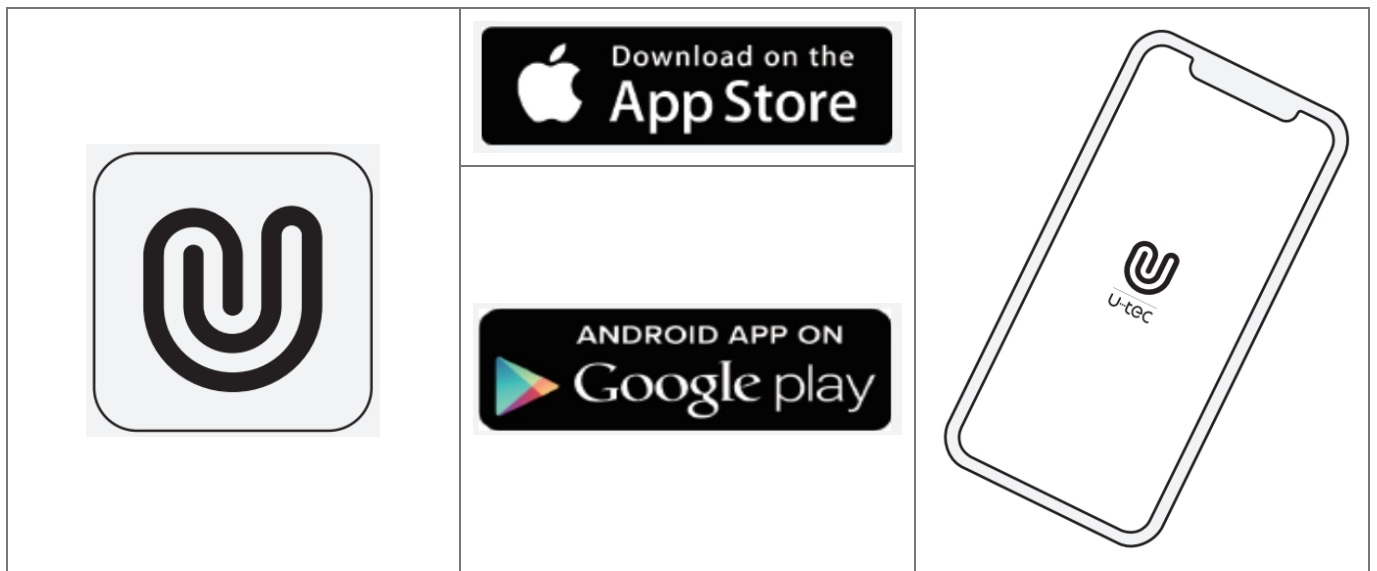
Reset Button
Used to reset the lock to factory default settings.

Add Lock to U-tec App

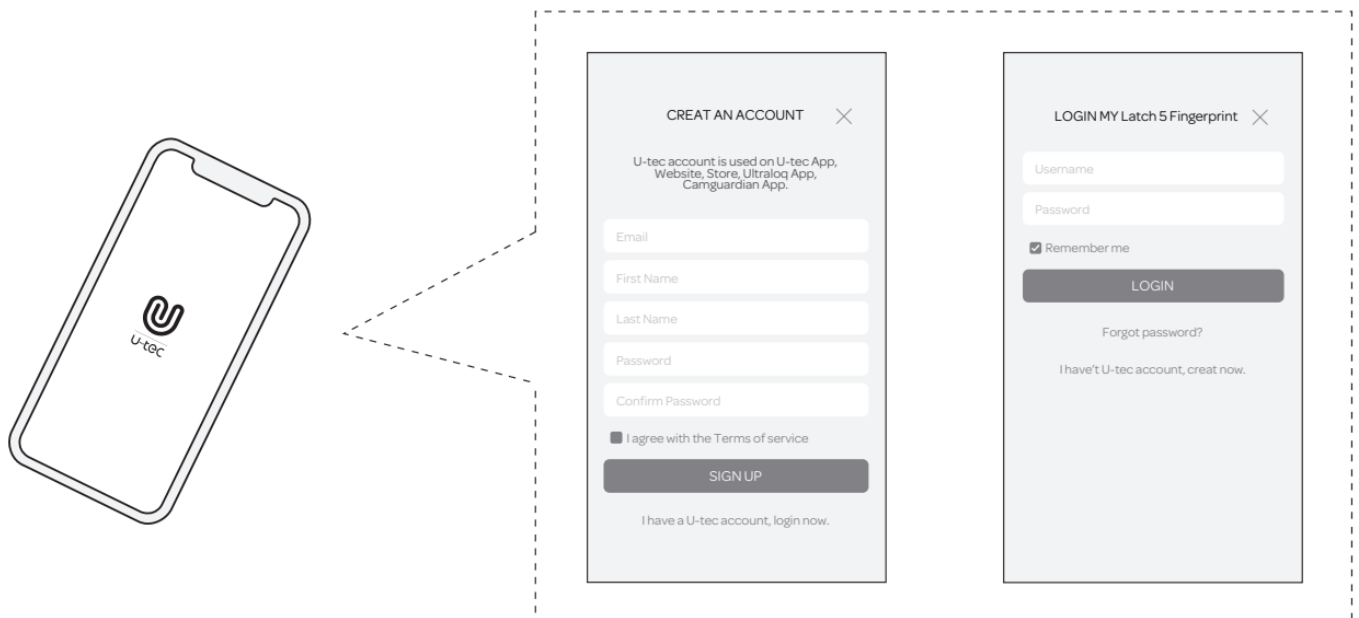
Search on app store



Download App

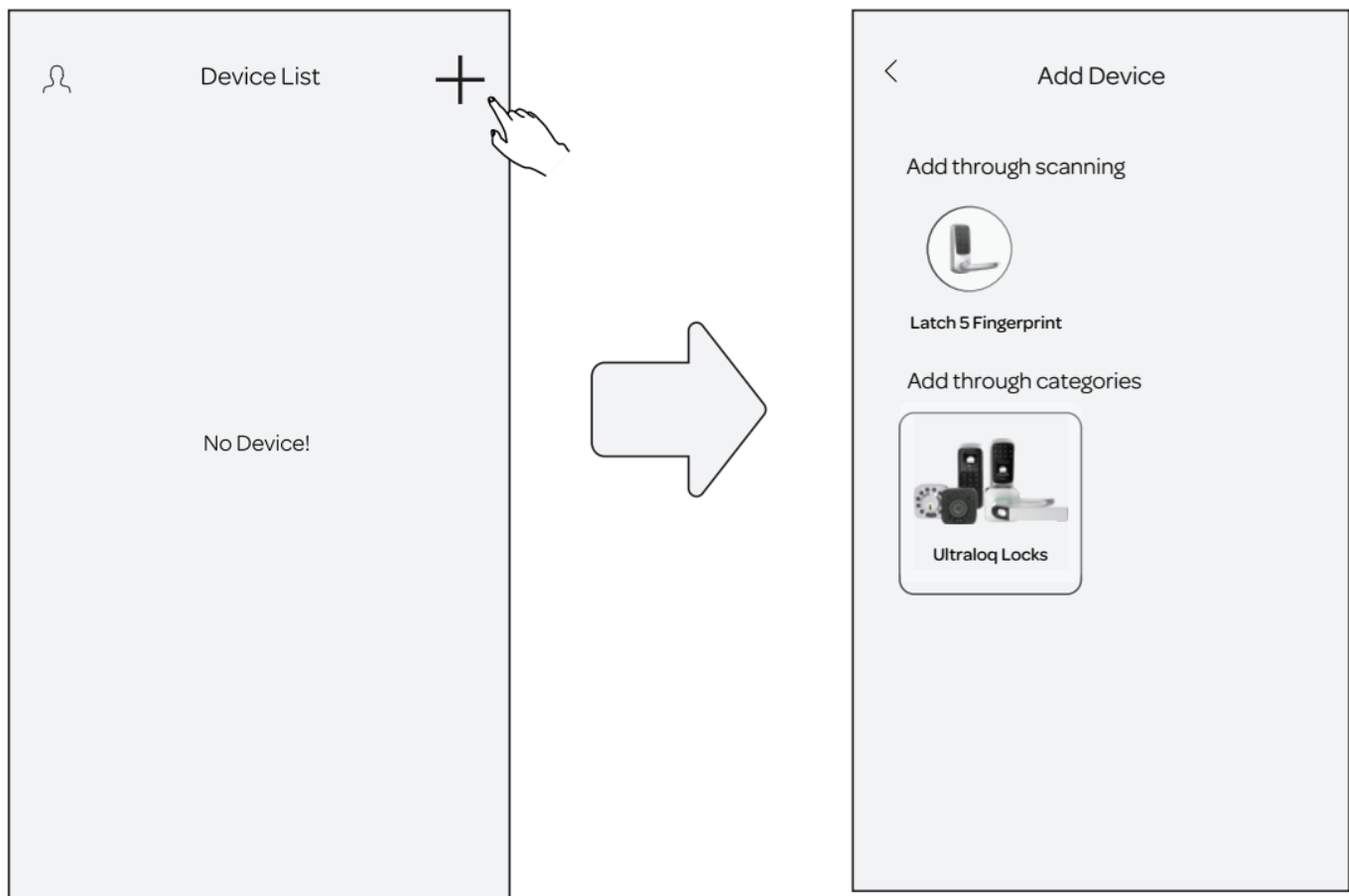


Create Account



Add a New Device and Add a New User to the Lock

Add the lock to the App through two options



Bluetooth and GPS should be turned on in your smart phone to enable this feature.

Options 1 Add through Scanning

Step 1. Turn on the GPS and Bluetooth on your smart phone

Step 2. Select the device that you want to add in the scanning list

Step 3. Adding the device by following the instructions in the App

Options 2 Add through Categories

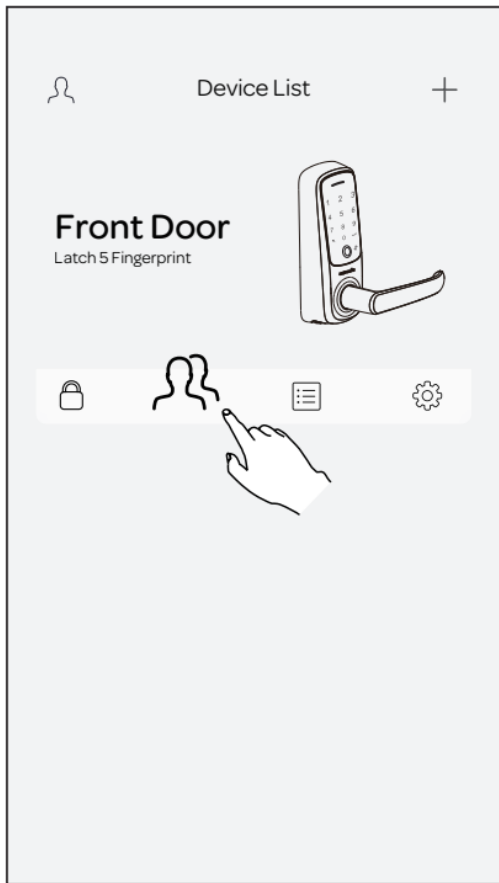
Step 1. Select Latch5 Fingerprint

Step 2. Select the device with strongest signal strength

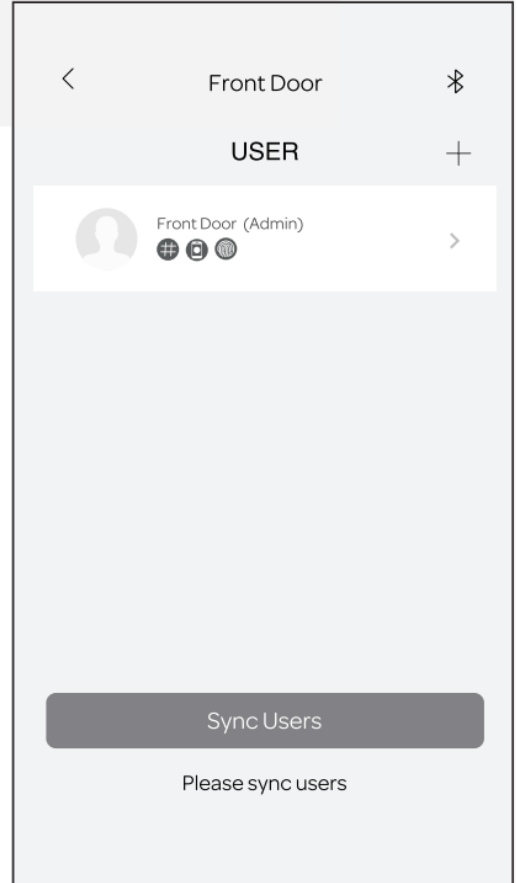
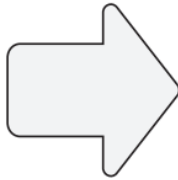
Step 3. Create admin code

Step 4. Name the lock

Overall Process for Adding a New User



Device List



User List



Please follow more detailed instructions in the App.

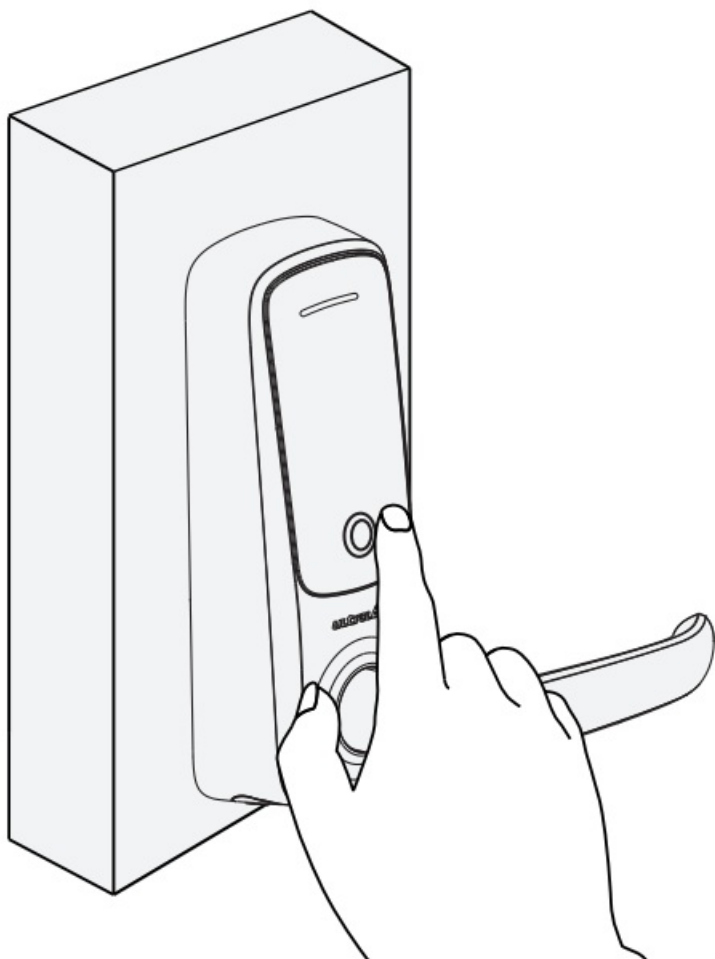
Set three different ways to unlock the door when add a new user

- a. Add Fingerprint
- b. Add Code
- c. Add the User's Email Account

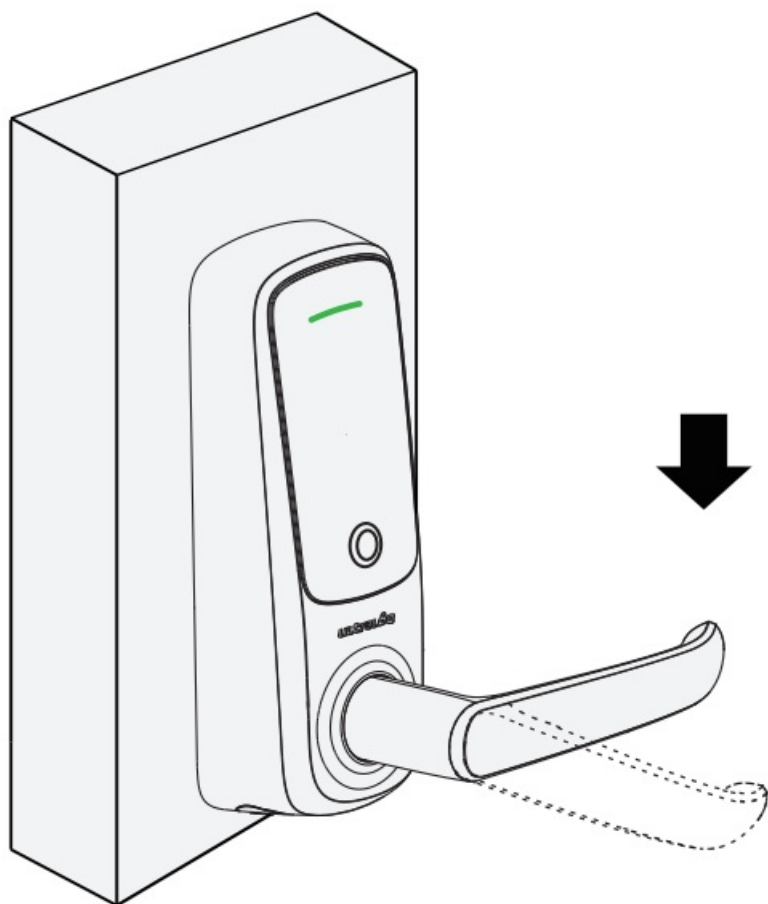
Operate the Lock

Unlock with Fingerprint

2a Touch the center of the touch screen with registered Fingerprint.

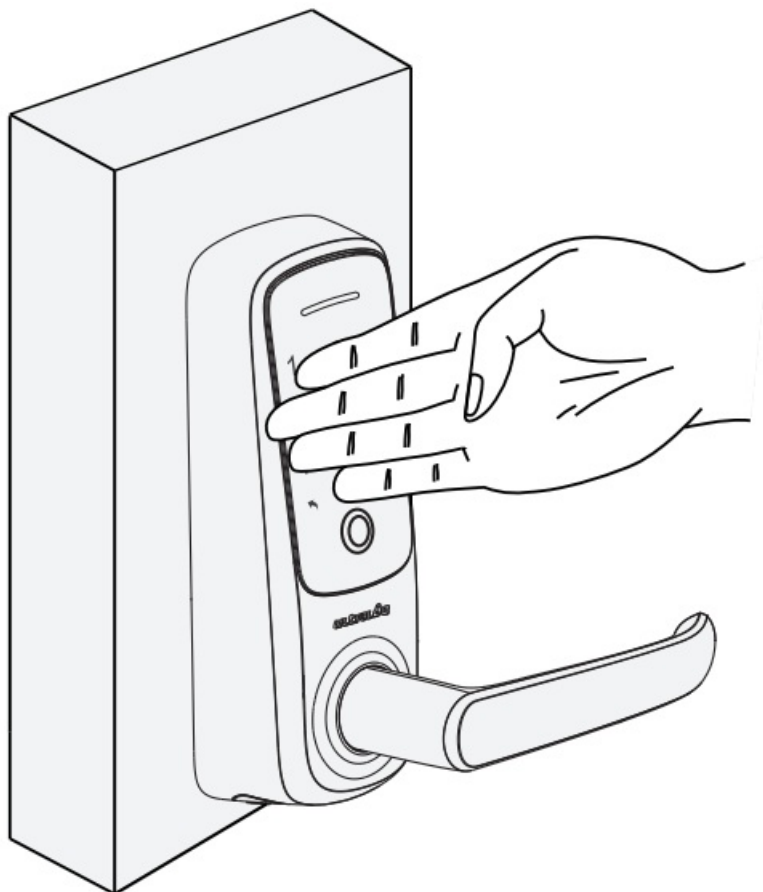



2b. Turn down the handle to open the door.

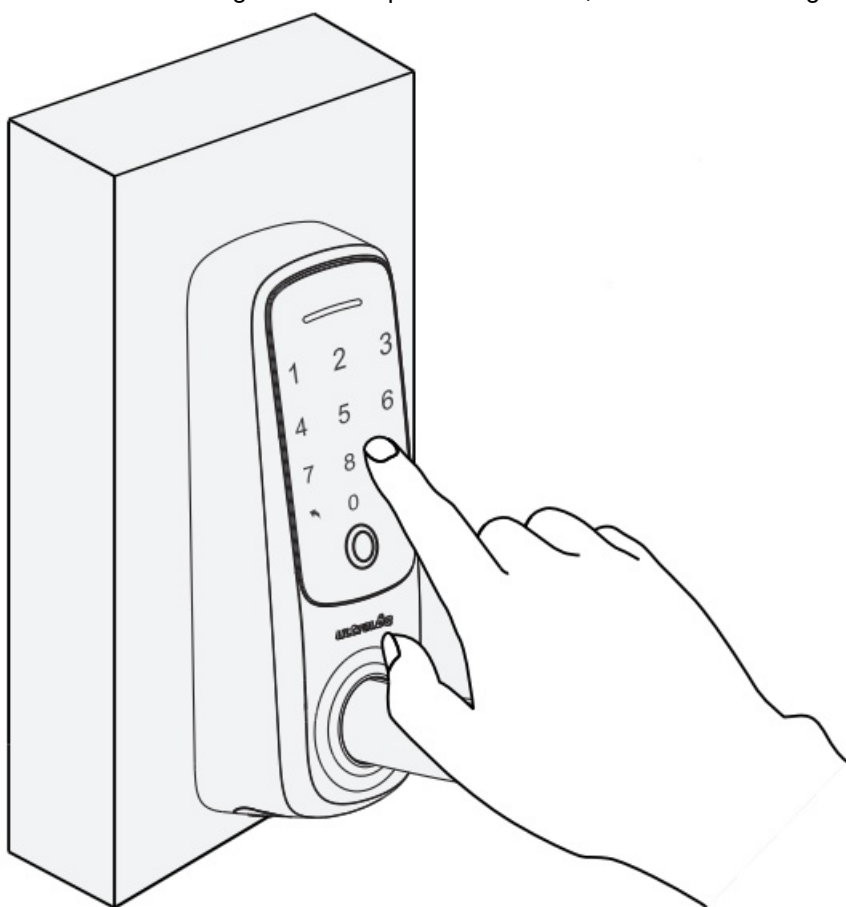


Unlock with Code

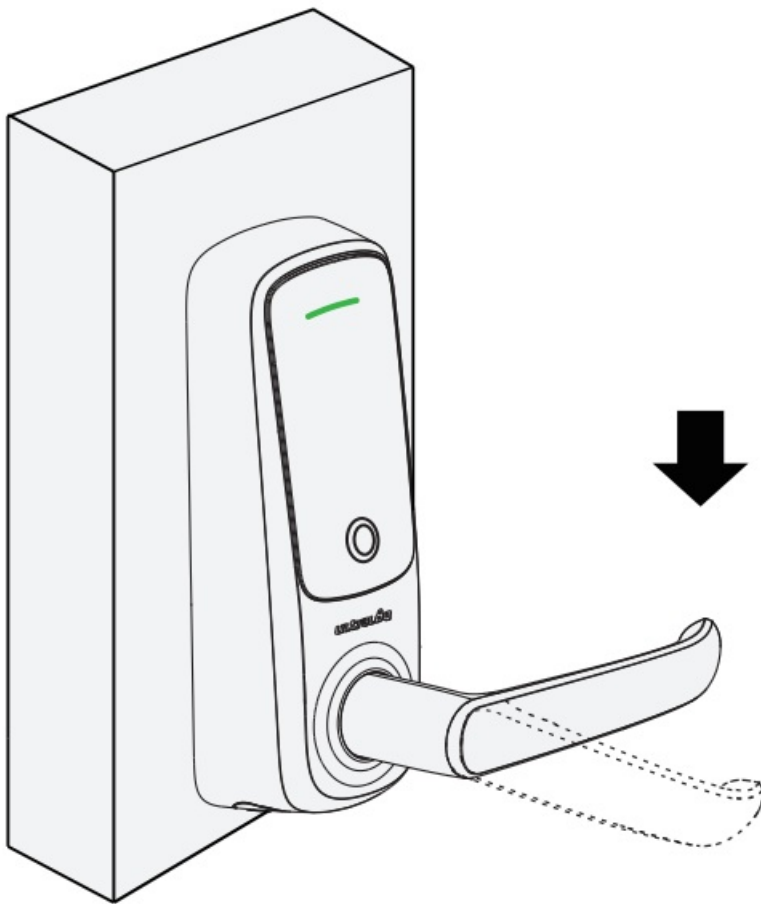
1a. Touch the lock with the back of your hand to activate the lock.



1b. Enter the 4-8 digit code and press  the , the LED will turn green if the code is correct.



1c. Turn down the handle to open the door.

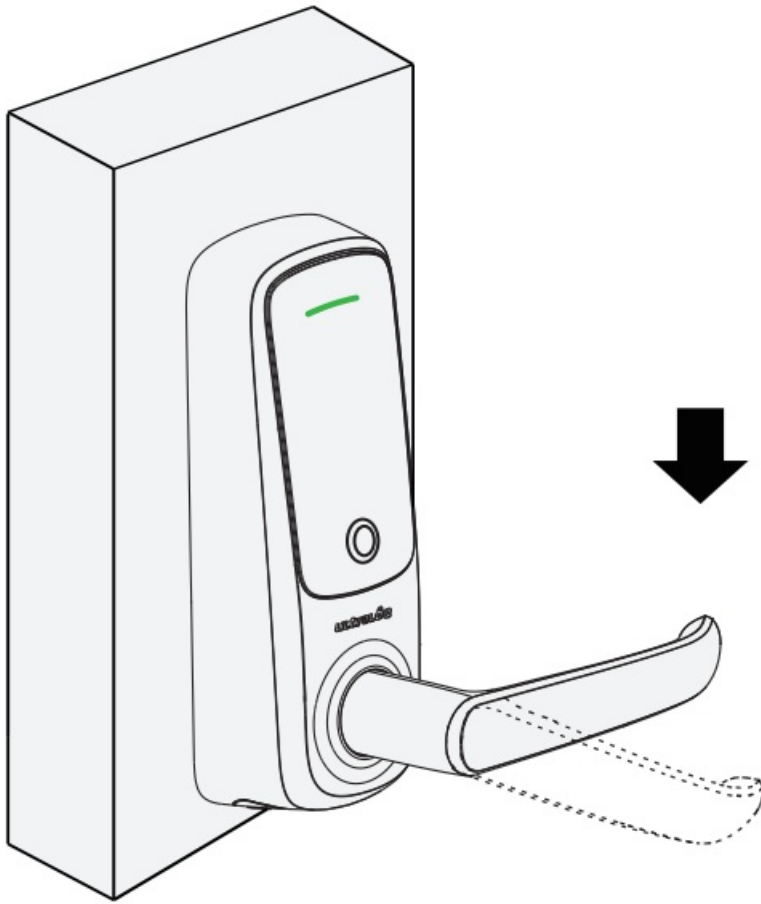


Unlock with App

3a. Connect the lock with U-tec App and tap the Unlock button.



3b. Turn down the handle to open the door.



If you come to any other questions, please don't hesitate to visit our official support website <https://support.u-tec.com> to get more help.

ULtraLoq

FAQ

Q.1 Can't Unlock by inside handle after installation. How to Fix?

A. Please check the thickness of your door. The thickness should be between 1-3/8" to 1-3/4"(35 mm – 44mm). Please install the spring if the door thickness is over 1.65"(42mm). Don't forget plug in the spindle. For thicker doors between 2" to 2-3/4"(51mm -70mm), please order the UltraLoq Thick Door Kit on our official online store. <https://support.u-tec.com>

Q2. How to reset the Latch 5 Fingerprint?

A. Please note all data will be erased if you reset Latch 5 Fingerprint to factory default settings. If you are using the U-tec App as Owner, please click "Delete and Reset" to remove the lock from your U-tec Account, then use the Reset Needle to push the Reset Button (above the batteries in the Interior Assembly) until you hear one long beep and two short beeps.

Q3. What if I lost the paired smartphone?

A. Please go to www.u-tec.com/myutec.html or login U-tec App via another smartphone to change your U-tec account password.

Q4. How can I unlock the Latch 5 Fingerprint if the battery runs out?

A. The low battery indicator light will be red when the batteries are gonging to be running out. The backup

mechanical keys work always even when the batteries go dead.

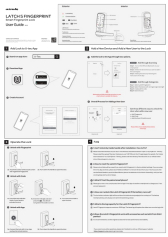
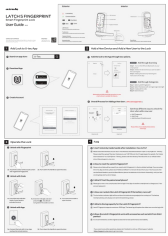
Q5. What is the log capacity for the Latch 5 Fingerprint?

A. Latch 5 Fingerprint supports maximum 1000 logs. The latest log will replace the oldest one once the log is full.

Q6. Does the Latch 5 Fingerprint work with accessories such as latch from third parties?

A. It is recommended to use the original accessories for best performance and stability.

Documents / Resources

	<p>ULtraLoQ LATCH 5 Smart Fingerprint Lock [pdf] User Guide LATCH5, 2AJZ2-LATCH5, 2AJZ2LATCH5, LATCH 5, Smart Fingerprint Lock, LATCH 5 Smart Fingerprint Lock, Fingerprint Lock, Lock</p>
	<p>ultraLoQ LATCH 5 Smart Fingerprint Lock [pdf] User Guide LATCH 5 Smart Fingerprint Lock, LATCH 5, Smart Fingerprint Lock, Fingerprint Lock, Lock</p>

References

- [U: Privacy Policy – U-tec](#)
- [U: My U-tec](#)