



ULtraLoQ LATCH 5 NFC Smart Keypad Lock User Guide

[Home](#) » [Ultralog](#) » ULtraLoQ LATCH 5 NFC Smart Keypad Lock User Guide 



LATCH 5 NFC
Smart Keypad Lock
User Guide V1.0

Contents

1

LATCH 5 NFC Smart Keypad Lock

2

Add Lock to U-tec App

3

Operate the Lock

4

FAQ

5

Documents / Resources

5.1





References



6

Related Posts

LATCH 5 NFC Smart Keypad Lock

Exterior

-  Low battery
-  Communication
-  - 

 Numbers
-  Back  Enter

LED Indicator

Shows you authorized or denied access.

Touchscreen

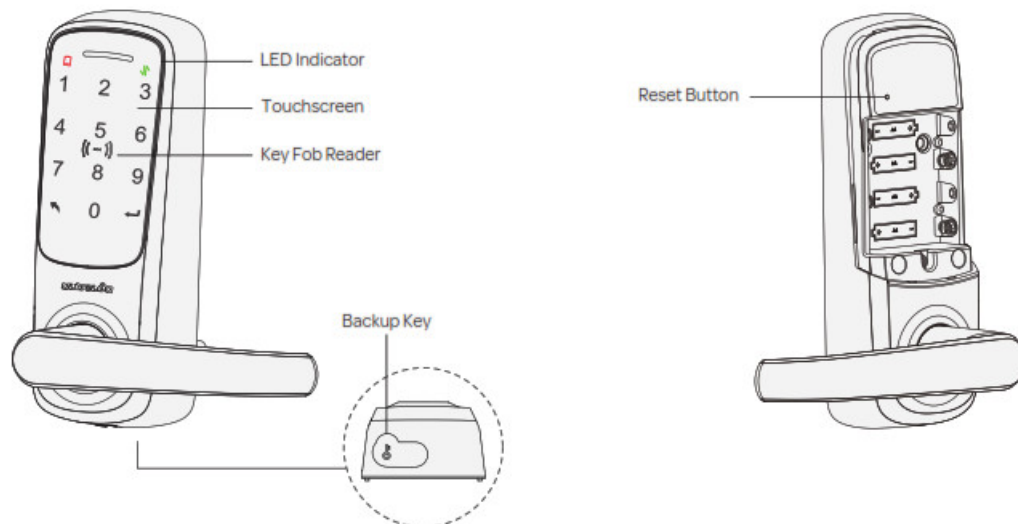
Used to enter the code and unlock from the outside.

Key Fob Reader

Read Key Fob signals and unlock from the outside.

Backup Key Hole

Used to insert the key to unlock from outside.

**Interior****Add Lock to U-tec App**

1. Search on app store



2. Download App

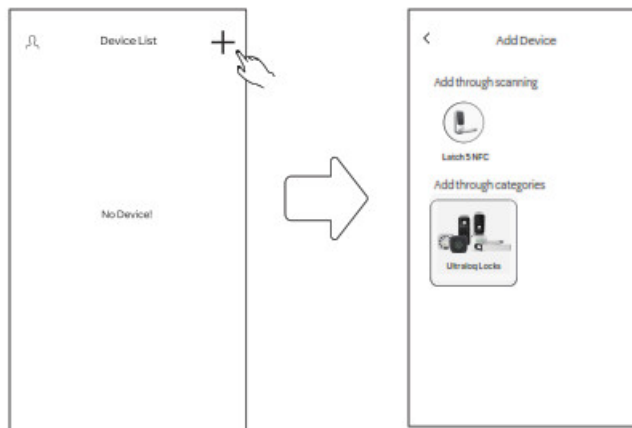


3. Create Account



Add a New Device and Add a New User to the Lock

1. Add the lock to the App through two options.



Options 1

Add through Scanning

Step 1. Turn on the GPS and Bluetooth on your smart phone

Step 2. Select the device that you want to add in the scanning list

Step 3. Adding the device by following the instructions in the App

Options 2 Add through Categories

Step 1. Select Latch 5 NFC

Step 2. Select the device with strongest signal strength

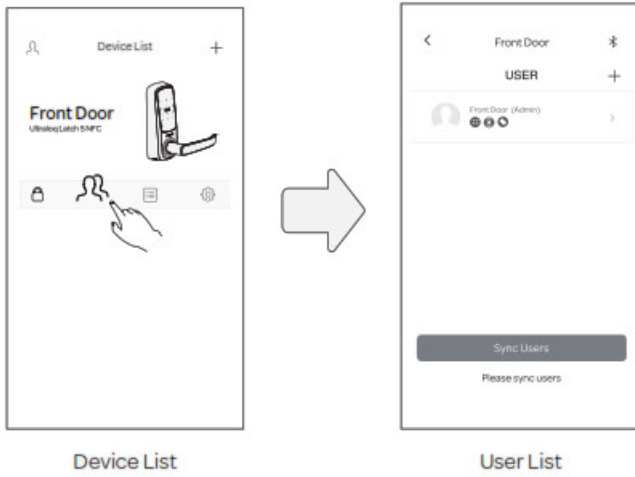
Step 3. Create admin code

Step 4. Name the lock



Bluetooth and GPS should be turned on in your smart phone to enable this feature.

2. Overall Process for Adding a New User (NFC card supported)



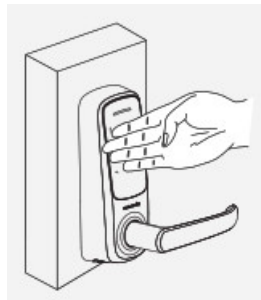
Set three different ways to unlock the door when add a new user

- Add Key Fob
- Add Code
- Add the User's Email Account

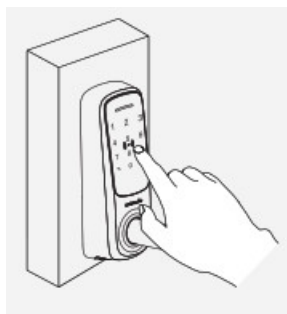
 Please follow more detailed instructions in the App.

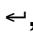
Operate the Lock

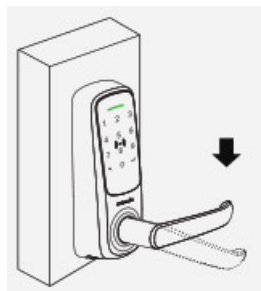
1. Unlock with Code



1a. Touch the lock with the back of your hand to activate the lock.

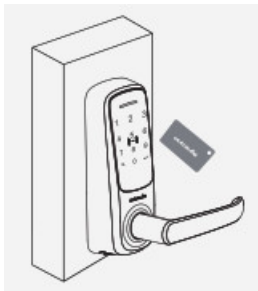


1b. Enter the 4-8 digit code and press the , the LED will turn green if the code is correct.

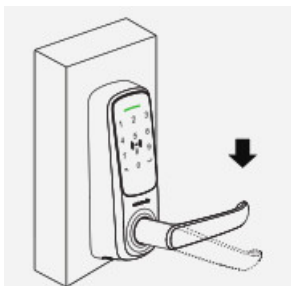


1c. Turn down the handle to open the door.

2. Unlock with Key Fob



2a. Touch the center of the touch screen with registered Key Fob.

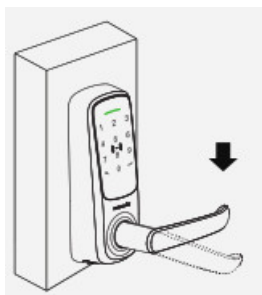


2b. Turn down the handle to open the door.

3. Unlock with App



3a. Connect the lock with U-tec App and tap the Unlock button.



3b. Turn down the handle to open the door.

FAQ

Q 1.Can't Unlock by inside handle after installation, How to Fix?

– A Please install the spring if the door thickness is over 1.65"(42mm). Don't forget plug in the spindle. For thicker door between 2-3/8" to 2-3/4"(51mm-70mm), please order the Ultralog Thick Door Kit on our official online store.
<https://support.u-tec.com>

Q 2.How to reset the Latch 5 NFC ?

– A Please note all data will be erased if you reset Latch 5 NFC to factory default settings. If you are using the U-tec App as Owner, please click "Delete and Reset" to remove the lock from your U-tec Account, then use the Reset Needle to push the Reset Button (above the batteries in the Interior Assembly) until you hear one long beep and two short beeps.

Q 3.What if I lost the paired smartphone?

– A Please go to www.u-tec.com/myutec.html or login U-tec App via another smartphone to change your U-tec account password.

Q 4.How can I unlock the Latch 5 NFC if the battery to run out?

– A The low battery indicator light will be red when the batteries are gonging to be running out. The backup mechanical keys work always even when the batteries go dead.

Q 5.What is the log capacity for the Latch 5 NFC?

– A Latch 5 NFC supports maximum 1000 logs. The latest log will replace the oldest one once the log is full.

Q 6.Does the Latch 5 NFC work with accessories such as latch from third parties?

– A It is recommended to use the original accessories for best performance and stability.

If you come to any other questions, please don't hesitate to visit our official support website <https://support.u-tec.com> to get more help.

Ultraloq Terms & Policies

Before using all Ultraloq products, please read all applicable terms, rules, policies and usage provisions found at www.u-tec.com/company/privacy. By using your Ultraloq, you agree to be bound by the U-tec Privacy Policy.



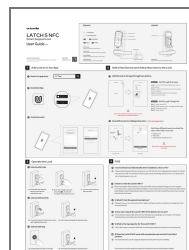
ULtraLoQ

Need help?

To get help or learn more

<https://support.u-tec.com>

Documents / Resources



[ULtraLoQ LATCH 5 NFC Smart Keypad Lock](#) [pdf] User Guide
LATCH 5 NFC, Smart Keypad Lock, Keypad Lock, Smart Lock, Lock

References

- [!\[\]\(6841ca9b0e023296428e7c9e683b9367_img.jpg\) Privacy Policy – U-tec](#)
- [!\[\]\(e258e347e7683f87061f627f84598eb5_img.jpg\) My U-tec](#)

Manuals+.