

**ULTRALOG
Bolt Series
Fingerprint
Lock**



ULTRALOG Bolt Series Fingerprint Lock User Guide

[Home](#) » [Ultralog](#) » ULTRALOG Bolt Series Fingerprint Lock User Guide 

Contents

- [1 ULTRALOG Bolt Series Fingerprint Lock](#)
- [2 Packing List](#)
- [3 Installation Guide](#)
- [4 Installing Bolt and Strike](#)
- [5 Installing Exterior Assembly](#)
- [6 User Guide](#)
 - [6.1 Product Overview](#)
- [7 Using Your Lock](#)
- [8 Standalone Mode Programming Guide](#)
- [9 FAQ](#)
- [10 Documents / Resources](#)
 - [10.1 References](#)

ULTRALOG

ULTRALOG Bolt Series Fingerprint Lock



Important Notes

- Install and test the lock with the door open to avoid being locked out.
- Please read and follow the instructions before contacting customer support.
- Please kindly remove the device from settings and contact customer support prior to returning the lock.
- This lock is designed for the following operating temperatures:

Outside: -4 °F(-20 °C) to 149 °F (65 °C)

Inside: 14 °F (-10 °C) to 131 °F (55 °C)

- Do not use a power drill for installation.
- Do not install the batteries before installing the lock.
- Rechargeable batteries or other batteries are not recommended. Suggest AA Alkaline Battery.

Note:The Exterior Assembly of UL TRALQ Bolt Fingerprint is waterproof, but the Interior Assembly is not waterproof at all due to the battery box.

Statements

To ensure the best service, please create your account first at www.u-tec.com/register.html

ULTRALQ Terms & Policies

Before using all ULTRALQ products, please read all applicable terms, rules, policies and usage provisions found at www.u-tec.com/company/privacy. By using your ULTRALQ, you agree to be bound by the U-tec Privacy Policy.

Need Help?

For technical documents and more

Please visit support.u-tec.com or call 1-[844-439-8832](tel:844-439-8832)

Packing List

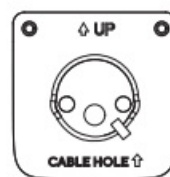
Interior
Assembly



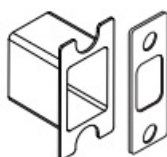
Exterior
Assembly



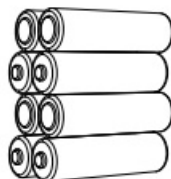
Interior Assembly
Mounting Plate



Strike

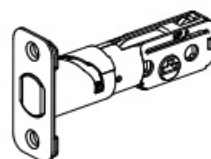


AA Alkaline Batteries



May not be included
for some regions

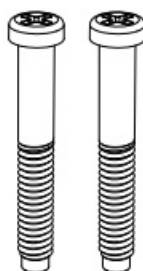
Bolt



Screw A



Screw B



Screw C



Screw D



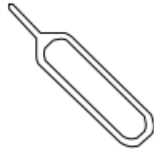
Door Sensor



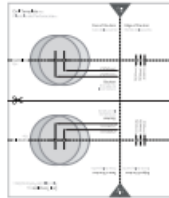
Backup Key



Reset Needle



Drill Template



User Guide



Quick Setup
Guide



Optional

Installation Guide

Installation Video

Please scan this QR code to watch the easy step by step installation video before attempting to install ULTRALOQ.

Or you can also view the website directly. www.u-tec.com/lock/Bolt_F_WiFiguide



Preparing Door

Check the door's dimensions.

Step1

Measure to confirm that the door is between 13/8"~ 1 3/4" (35 mm-45 mm) thick.

Note: If your door is thicker than 1 $\frac{3}{4}$ ", please visit <https://u-tec.com/pages/store> to order the "ULTRALQ Thick Door Kit".

Step2

Measure to confirm that the diameter of the hole is 2 $\frac{1}{4}$ " (53 mm) or 1 $\frac{1}{2}$ " (38 mm)

Step 3

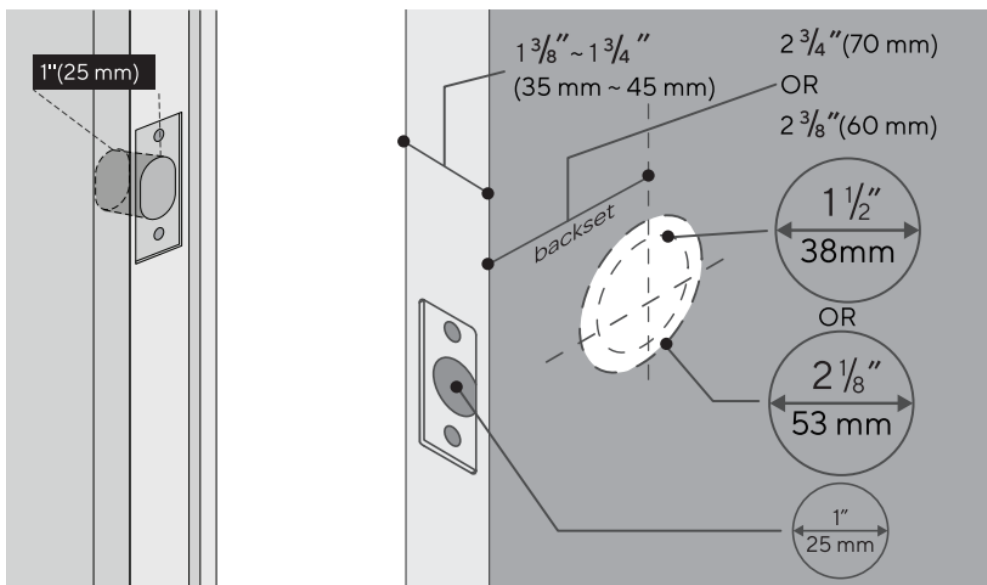
Measure to confirm that the backset is either 23 $\frac{3}{8}$ " or 23 $\frac{1}{8}$ " (60 mm or 70 mm).

Step 4

Measure to confirm that the diameter of the hole in the door edge is 1" (25 mm).

Step 5


Measure to confirm the depth of the hole in the frame is at least 1" (25 mm).



If you have a new door, please drill the holes according to Drill Template.

Installing Bolt and Strike

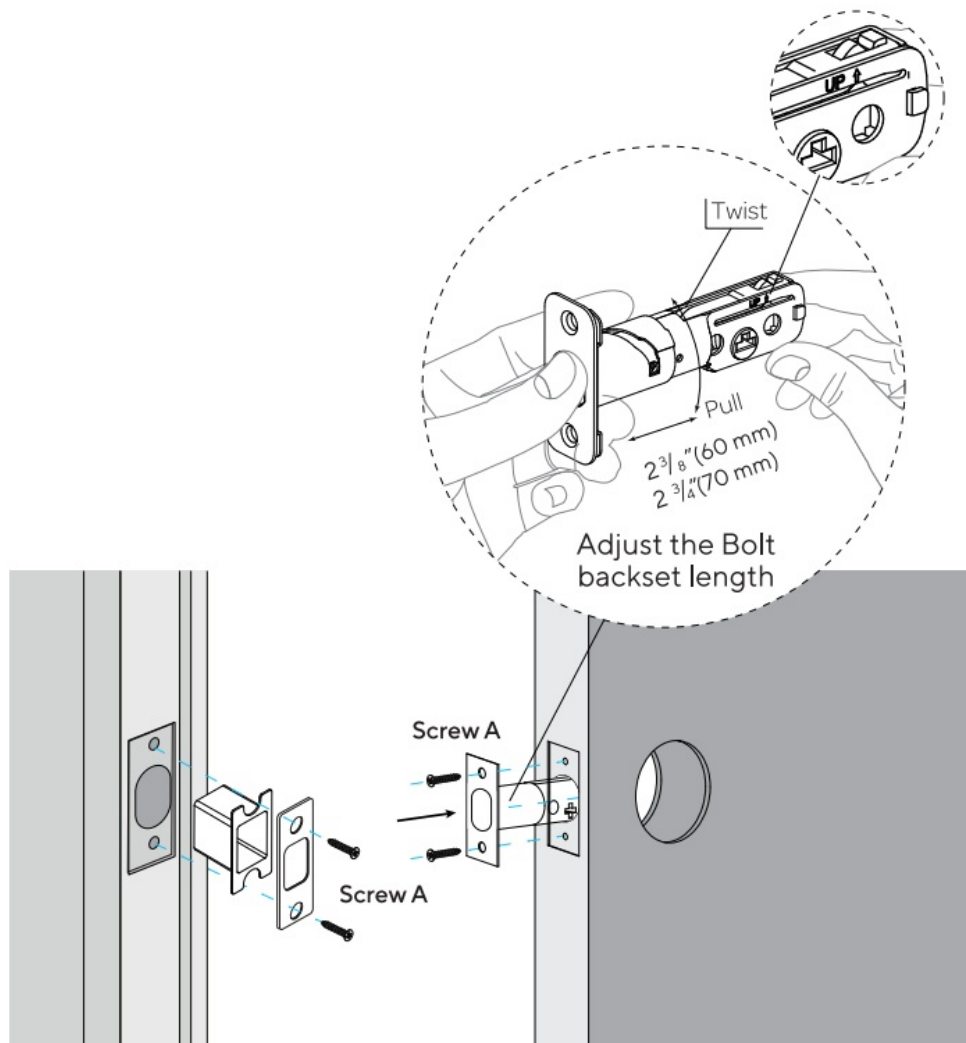
Step1

Install Bolt into the door. Make sure the UP  icon goes up.

Note: Bolt is set for 2 $\frac{3}{8}$ " (60mm) backset initially. It can be adjusted to 2 $\frac{3}{4}$ " (70mm) if needed. To adjust it please make sure the bolt is retracted, then, press it, and twist to the end until you feel a slight click.

Step2

Install Strike into the door frame.



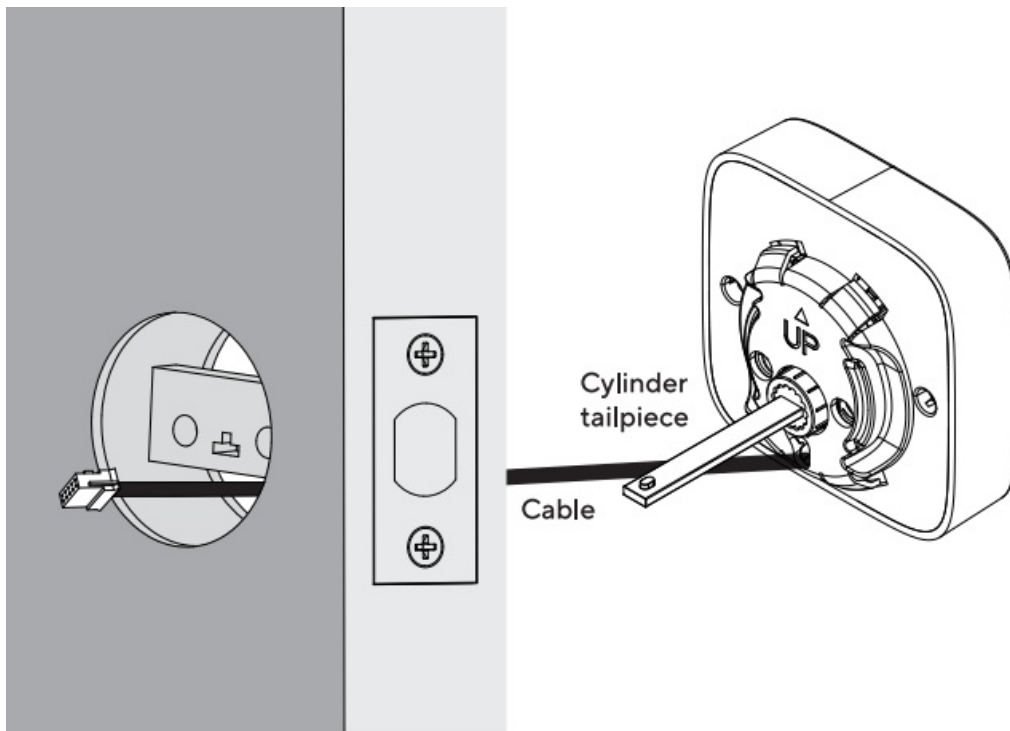
Installing Exterior Assembly

Step1

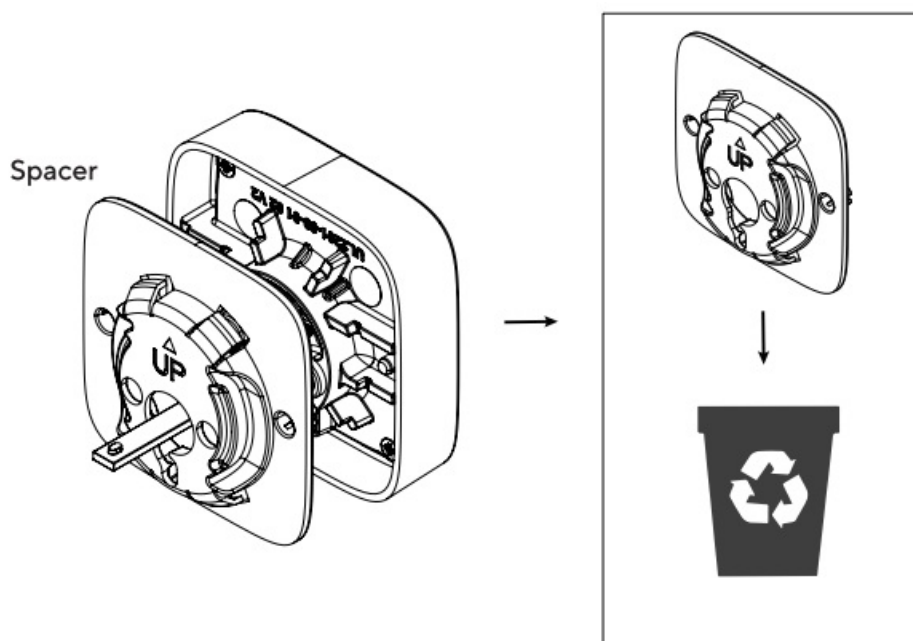
Keep Bolt retracted and the cylinder tail piece with bump pointed up horizontal. Install Exterior Assembly. Please do not insert the mechanical key during installation.

Step2

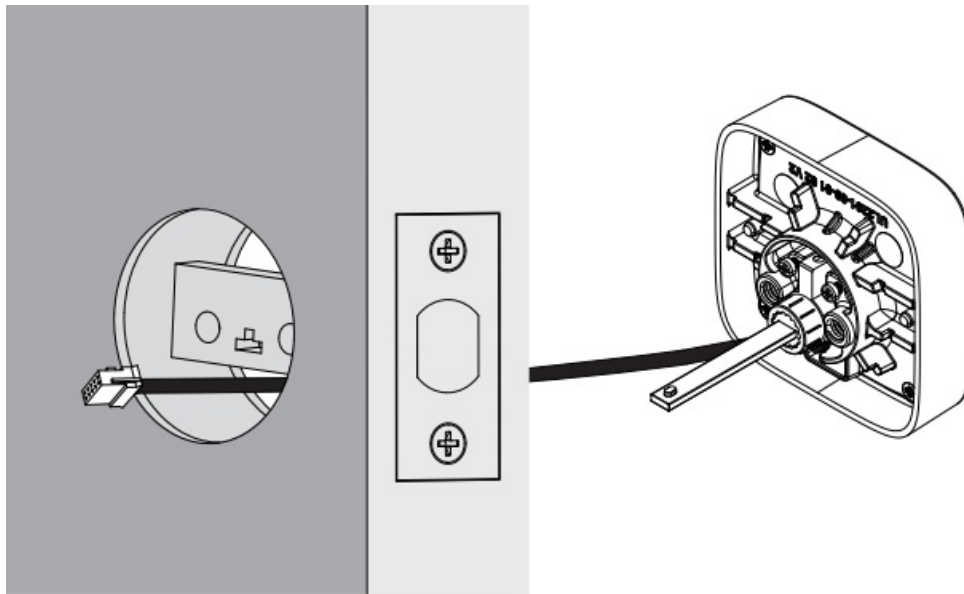
The cable goes through the hole be/ow Bolt.



If your door has a 1 ½"(38 mm) bore hole, remove the spacer as shown. If not, don't remove it.



With No Spacer



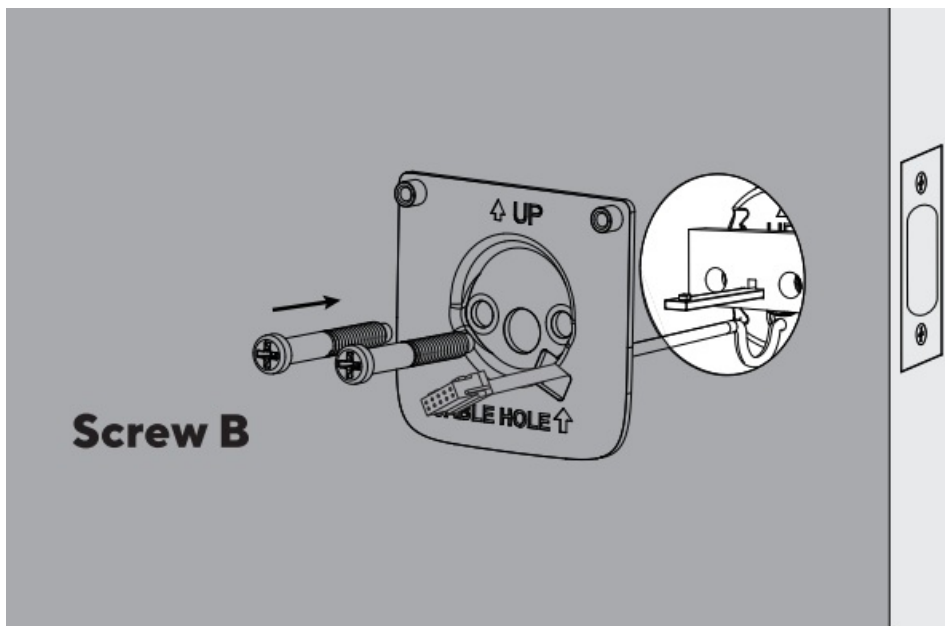
Installing Interior Assembly Mounting Plate

Step1

Route the cable through the hole on Interior Assembly Mounting Plate.

Step2

Secure Interior Assembly Mounting Plate to Exterior Assembly using Screws B(x2).



Installing Interior Assembly

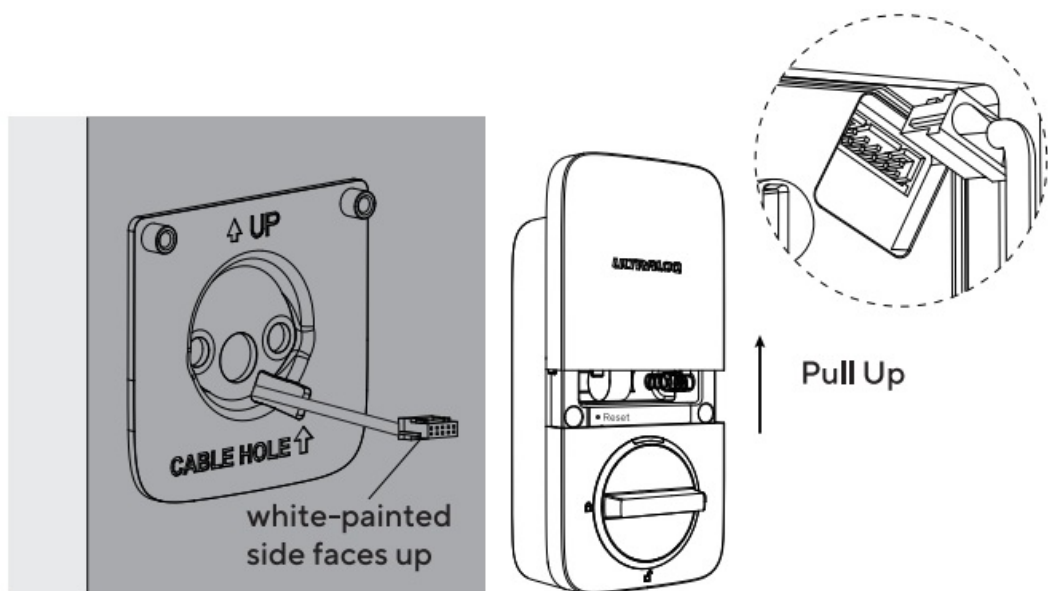
Warning: Please do not install the batteries before installing interior assembly, otherwise the keypad may not be powered on.

Step1

Remove the battery cover of the Interior Assembly.

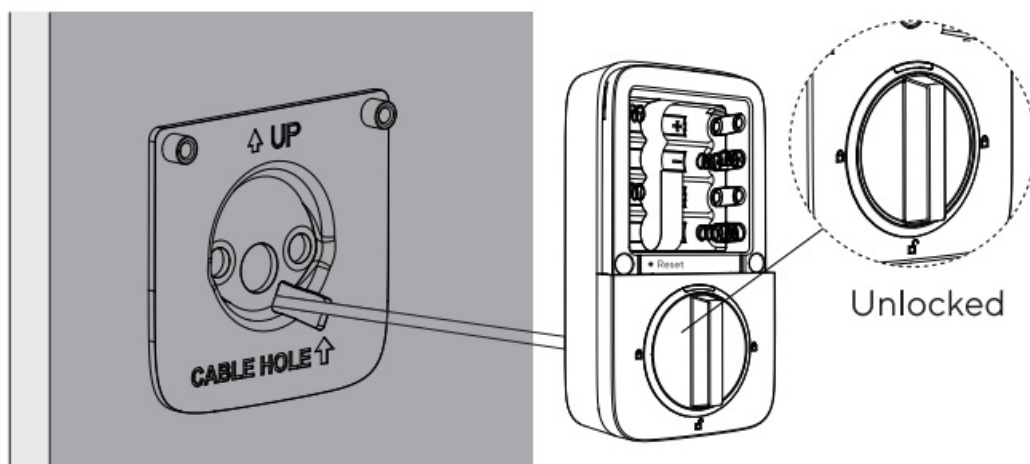
Step2

Insert the connector of the cable to the socket of the Interior Assembly. When you plug the connector, please make sure the white-painted side faces up. Press the connector in firmly until it is completely seated.



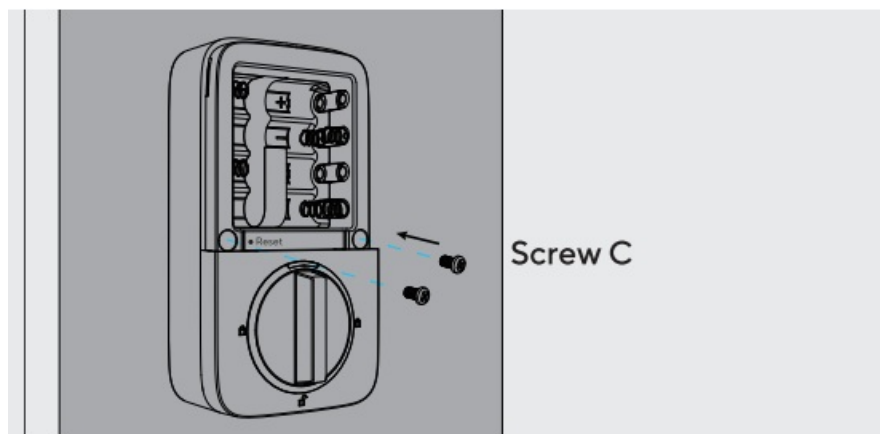
Step3

Rotate the knob and keep it in a vertical position to stay unlocked.



Step4

Attach Interior Assembly to Mounting Plate and tighten Screws C(x2).



Installing the Batteries and Performing the Door Handling Process

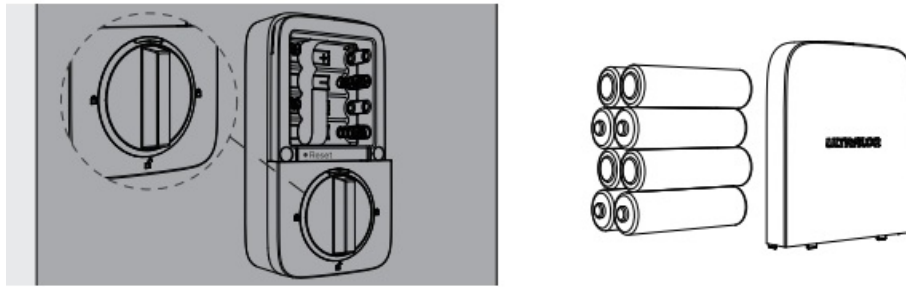
This step will teach your lock the orientation of your door and is crucial to lock operation.

Step1

Rotate the turn and keep it in a vertical position to stay unlocked.

Step2

Insert 8 AA Alkaline Batteries and keep the batteries on the battery pull tab, then install the battery cover.



Note: Only the Program Code on the battery cover can unlock ULTRALOCK Bolt Series in Factory Default Mode.

Step3

Direction calibration: Please keep Bolt unlocked and press and hold the number 5 until you hear two short beeps, then the lock will rotate to then start the direction self-calibration.



Note: To avoid deadbolt jamming, please note that this step should be done after the lock is installed on the door.

Installing the Door Sensor(Optional)

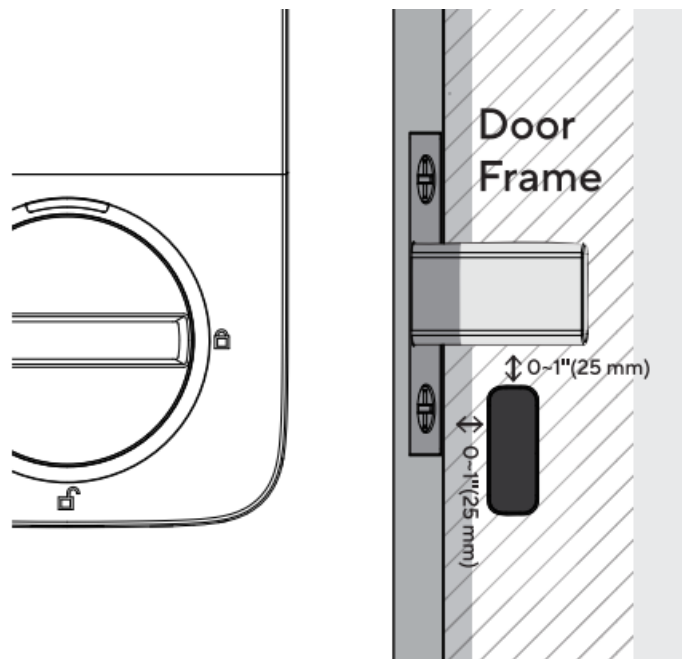
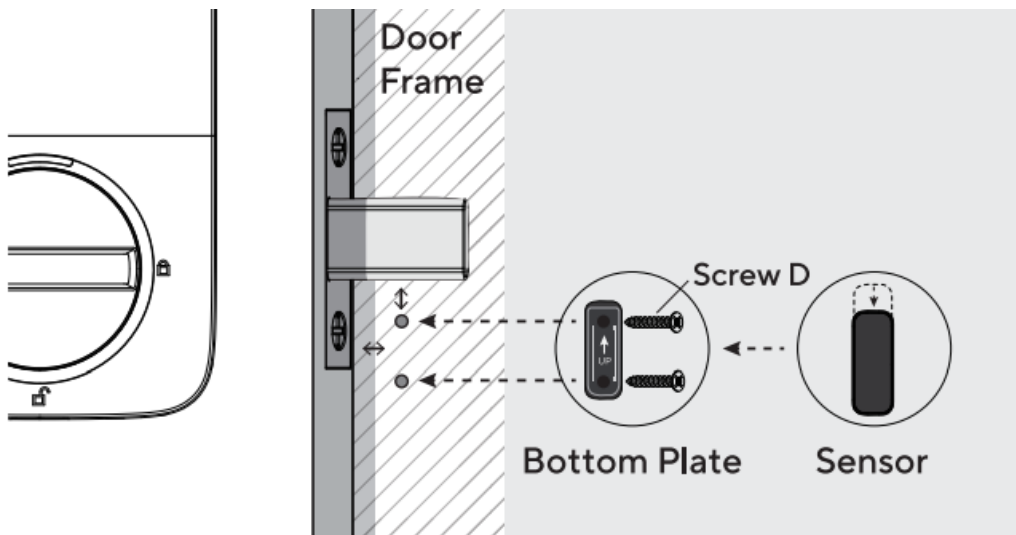
The door sensor lets you know whether the door is open or closed through the app. When the auto lock is enabled in the app, your ULTRALOCK will only lock it self when the door is closed.

Please do not mount the door sensor on the keypad side. Please do not mount the door sensor on the kind of metal door that interferes with the magnet inside the door sensor (In this case, the door sensor sticks to the metal door magnetically).

The door sensor can be installed on the wooden door or the kind of metal door that will not interfere with the door sensor (In this case, the door sensor will not stick to the door magnetically).

Installing with Screw D

Please drill two holes first and push the door sensor against the wall and secure it with Screws D(x2). Fasten the door sensor cover from top to bottom along the chute.



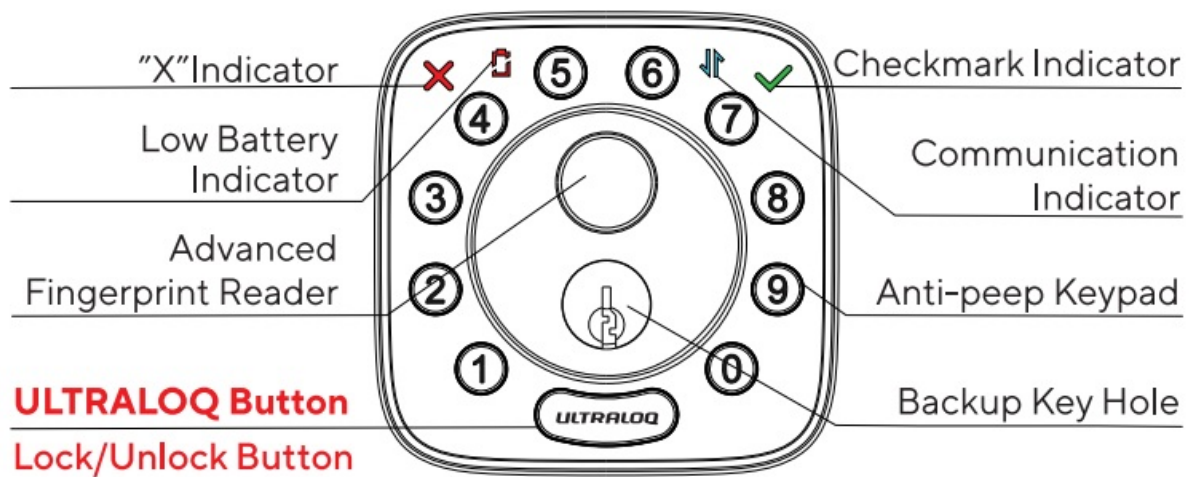
Note: Door sensor should be mounted as close to the edge of your door frame as possible, or within 0 to 1" (25 mm) from the edge, and as close to the bottom of the extended deadbolt as possible, or within 0 to 1" (25 mm) from the edge.









Note: Please refer to the guide in U home app for more information.

User Guide

Product Overview

Exterior



1.  Anti-peep Keypad
Used to enter the code and unlock from outside.
2.  Advanced Fingerprint Reader
Verify fingerprint access and unlock from the outside.
3.  Checkmark Indicator
Lights up when manual programming is successful or your entry verification is correct.
4.  "X" Indicator
Lights up when your manual programming is failed or your entry verification is wrong.
5.  Communication Indicator
Flashes when the lock is communicating with your app or Internet.
6.  Low Battery Indicator
Illuminates when the battery is low.
7.  Backup Key Hole
Manually unlock/lock with backup key in emergency situations.
8.  ULTRALOQ Button
Used to lock from the outside, illuminate the keypad for code entry and confirm previous operation etc.

ULTRALOQ Button has the following functions:

One-touch
locking



Tap to locking when
going outside

Confirm unlocking after
entering the password

Step 1 Input
Password



Step 2 Tap

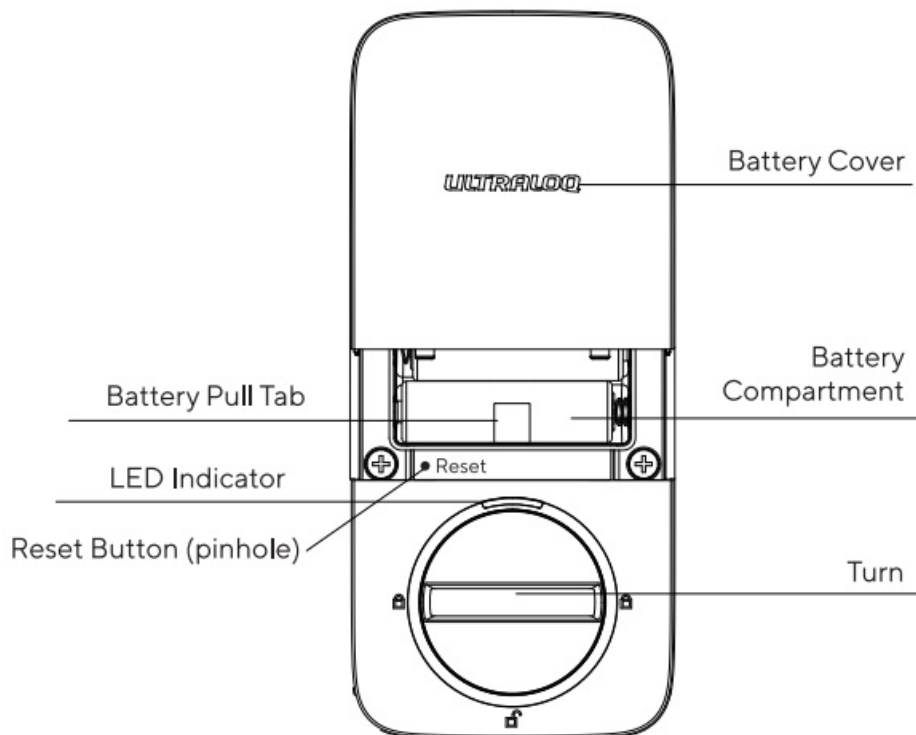
ULTRALOCK

Illuminate
the keypad



Illuminate the
keyboard in darkness

Interior



Reset Button (pinhole)

Used to reset the lock to Factory Default settings.

If the lock was paired to app, please click "Remove Device" to remove the device from app. For more reset information, please check P14.

Battery Pull Tab

Use the battery pull tab to lift and remove the batteries from the battery box.

Battery Compartment

Insert 8 AA Alkaline Batteries, or U-tec Lithium Batteries. Rechargeable batteries or other batteries are not recommended.

Note: Please insert 8 batteries to start the smart lock.

Battery Cover

Covers the batteries, and are affixed the Program Code and Apple Home code(optional). Please safeguard.

Turn

Unlock and lock the door from inside.

LED Indicator

Turns green when door is unlocked.

Low Battery Alarm

When the battery is low, the door lock will beep three times and the low battery indicator light will illuminate. Please replace the batteries.

Lock Setup

Scan QR code to download the App

**Step1**

Scan above QR code to download the app, or search "U home by U-tec" in App Store (iOS) or "U home" in Play Store (Android).

Step2

Open the app, register U home account and log in the account.

Step3

Make sure the lock is in Factory Default Mode. Turn on Bluetooth on your smartphone, stay near the lock (within 10 feet) and search for the lock in the app. If you want to reset your lock to Factory Default Mode, please check P14.

Step4

Follow the onscreen instructions to pair the lock in the app. ULTRALOC Bolt Fingerprint can only work with the 2.4GHz WiFi network (5GHz WiFi NOT supported).

Note: Please refer to the guide in U home app for more information.

DON'T WANT TO USE THE APP?

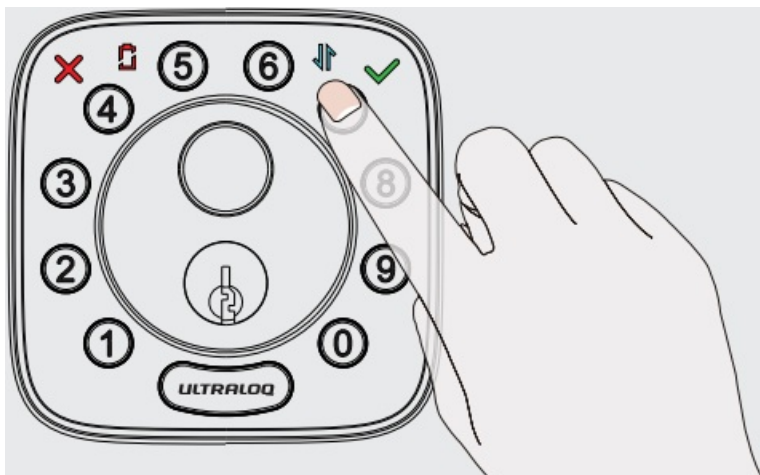
Please go to page 16 for programming guide for Standalone Mode.

Using Your Lock

Unlock From Outside

- **User Code**

Enter 4-8 digit code and press ULTRALOCK Button to unlock.



- **Fingerprint**

Place your finger on Fingerprint Reader to unlock.



- **Smartphone**

Use your smartphone to unlock. Please refer to the guide in U home app.



Lock From Outside

Press ULTRALOCK Button to lock manually.

Enable Auto Lock feature and the lock will relock automatically.

Unlock From Inside

Rotate the turn to a vertical position to unlock.

Reset the Lock

If you are a home app owner, please click "Remove Device" button to remove the lock from your U home app, then you will hear three beeps, that means a successful reset.

If you have already removed the lock from your U home app, but the lock doesn't reset itself, please use a Reset Needle to push the Reset Button(at the bottom of Interior Assembly) for 10 seconds until you hear one long beep and two short beeps.

Please note all data will be erased if you reset ULTRALOCK Bolt Fingerprint to factory default.

Replace Batteries

Please use 8 high-quality AA Alkaline Batteries for replacement when the battery is dead.

Important Note

Please keep at least one Backup Key outside of your place.

Enable Or Disable Auto Lock

Enable

Please keep Bolt unlocked and press "1" button for 3 seconds until Checkmark Indicator lights on and hear two beeps.

Disable

Please keep Bolt unlocked and press "O" button for 3 seconds until Checkmark Indicator lights on and hear two beeps.

This can also be set in U home app and Auto Lock timing can be programmed by yourself.

Anti-peep Keypad

The lock supports up to a 16-digit Vague Code. Just enter any code up to 16 digits or less, as long as the correct code is sequentially included, you can open the door.

Example

User Code: 123456

Vague Code

1: 1 2 3 4 5 6 X X X X X X

2: X X X X X X 1 2 3 4 5 6

3: X X X 1 2 3 4 5 6 X X X

Place Finger



Some Tips to Improve Fingerprint Entry

1. For a higher recognition rate, please try to cover the Fingerprint Reader completely with your finger, touching the surrounding metal ring.
2. Make sure that your finger and Fingerprint Reader are clean and dry. For Fingerprint Reader, use a clean, lint-free cloth to wipe off any dirt or debris.
3. Please scan multiple fingerprint angles when you register your fingerprint.
4. While scanning your finger, you shouldn't tap too quickly or move your finger around.

Standalone Mode Programming Guide









It is recommended to use U home app to program your lock. If you don't have a smartphone or don't want to use the app, you may follow the programming instructions below.

Warning

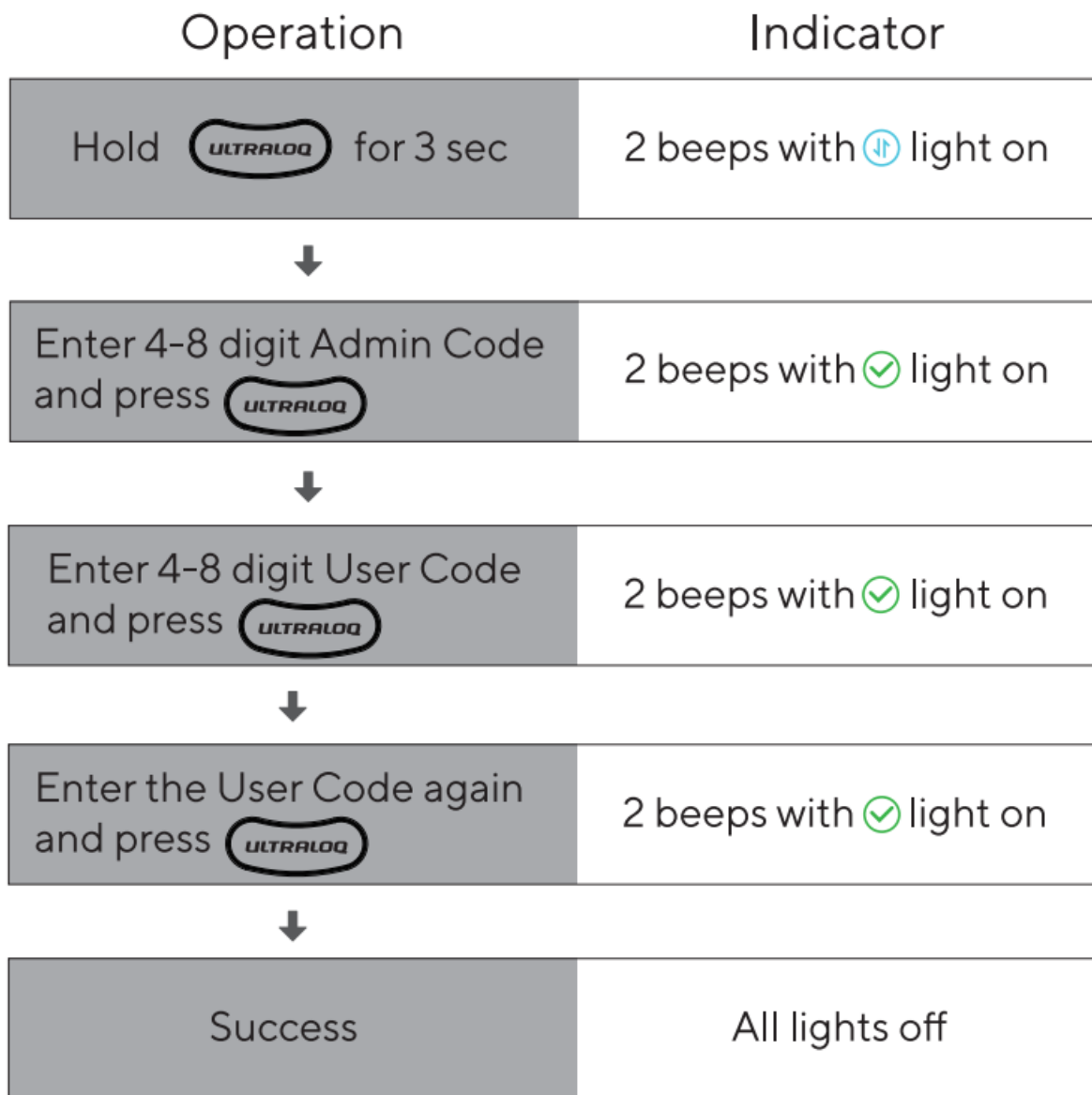
Standalone Mode is NOT available after the lock is registered in app! Please reset the lock to Factory Default Mode first to program your lock in Standalone Mode.

Add Admin Code in Standalone Mode





Please enter the Program Code first to set the Admin Code.

Operation	Indicator
Hold  for 3 sec	2 beeps with  light on
↓	
Enter 6 digit Program Code (on the Battery Cover) and press 	2 beeps with  light on
↓	
Enter 4-8 digit Admin Code and press 	2 beeps with  light on
↓	
Enter the Admin Code again and press 	2 beeps with  light on
↓	
Success	All lights off

Add User Code in Standalone Mode



Add Fingerprint in Standalone Mode

Operation	Indicator
Hold  for 3 sec	2 beeps with  light on
↓	
Enter 4-8 digit Admin Code and press 	2 beeps with  light on
↓	
Press Fingerprint 6 times	5 beeps and digit buttons blink 5 times
↓	
Success	All lights off

Delete Admin and User

Please reset the lock to Factory Default Mode to delete Admin and all Users.

How to reset the lock in Standalone Mode?

Please use the Reset Needle to push the Reset Button (under the battery cover) for 10 seconds until you hear one long beep and two short beeps.

User Guide Video

Please watch our easy step by step User Guide video on the left before attempting to use your ULTRALOCK Bolt Fingerprint Smart Lock (or you can also view the website directly.


www.u-tec.com/lock/Bolt_F_WiFi/guide).



For the configuration guide of integration (Alexa, Google Assistant, IFTTT, Apple Home and SmartThings), please check the QR code on the right or visit: support.u-tec.com, then chose "Works with" to watch the user guide video.

Keep Your Records

DATE	ADMIN CODE
------	------------

NAME	USER CODE	
Felix	12345678	

FAQ

What if I lost the paired smartphone?

Please go to www.u-tec.com/myutec.html on any browser or login to the U home app via another smartphone/tablet to change your U-tec Account password.

How to reset ULTRALOG Bolt Fingerprint?

Please note all data will be erased if you reset ULTRALOG Bolt Fingerprint to factory default. If you are U home app owner, please click Remove Device to remove the lock from your U home app, then the device will reset automatically. If ULTRALOG Bolt Fingerprint is working as Standalone Mode, please use the Reset Needle to push the Reset Button (under the battery cover) for 10s until you hear one long beep and two short beeps.

How can I unlock ULTRALOG Bolt Fingerprint if the battery runs out?

When the battery is low, the door lock will emit three audible notifications upon activation, accompanied by the illumination of the low battery indicator. Please replace batteries. Use the backup key to unlock. Please keep at least one key in secure location outside of your place.

What's the difference between Owner, Admin, Normal User and Temporary User?

Owner is the person who owns ULTRALOG Bolt Fingerprint and registers it in U home app originally. Owner has all privileges. Admin can always unlock via fingerprint, code or app. Admin can add or delete Admin and Users, control all lock settings and view logs. Normal User can always unlock via fingerprint, code or app. Temporary User has limited access within specific time range.

Does ULTRALOG Bolt Fingerprint work with accessories such as bolt from third party?

It is recommended to use the original accessories for best performance and stability.

What is the log capacity for ULTRALOCK Bolt Fingerprint?

ULTRALOCK Bolt Fingerprint supports maximum 1,000 logs. The latest log will replace the oldest one once log is full.

What is the user capacity for ULTRALOCK Bolt Fingerprint?

ULTRALOCK Bolt Fingerprint supports maximum 50 users and each user can register 1 code and 2 fingerprints.

How to extend battery life of ULTRALOCK Bolt Fingerprint?

You can disable the Remote Access to Lock function in the U home app. After turning off the Remote Access to Lock function, battery life will be improved drastically. Remote operation, smart control such as Alexa, Google Assistant, IFTTT, Apple Home, SmartThings and smart notifications will all be unavailable if turned off.

Does ULTRALOCK Bolt Fingerprint need to be paired with an ULTRALOCK Bridge?

No, it is a smart lock with built-in WiFi. No extra hub required.

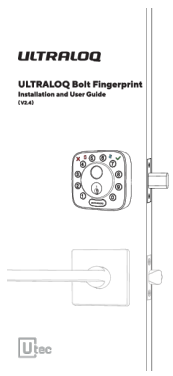
What is the network requirement?

ULTRALOCK Bolt Fingerprint can only work with the 2.4G WiFi network 5G WiFi NOT supported.

What is the Program Code?

Program Code is a unique code in Factory Default Mode. Only the Program Code on the battery cover can unlock ULTRALOCK Bolt Series in Factory Default Mode.

Documents / Resources

 The image shows the cover of the 'ULTRALOCK Bolt Series Fingerprint Lock Installation and User Guide'. It features a technical drawing of the lock unit and a handle. The text on the cover includes 'ULTRALOCK', 'ULTRALOCK Bolt Fingerprint Installation and User Guide', and 'V04.0'. A 'Utec' logo is visible in the bottom left corner.	<p>ULTRALOCK Bolt Series Fingerprint Lock [pdf] User Guide Bolt Series, Bolt Series Fingerprint Lock, Fingerprint Lock, Lock</p>
--	--

References

- [User Manual](#)

[Manuals+](#), [Privacy Policy](#)

This website is an independent publication and is neither affiliated with nor endorsed by any of the trademark owners. The "Bluetooth®" word mark and logos are registered trademarks owned by Bluetooth SIG, Inc. The "Wi-Fi®" word mark and logos are registered trademarks owned by the Wi-Fi Alliance. Any use of these marks on this website does not imply any affiliation with or endorsement.