



ULTRA Multi function Table Top Grinder Instruction Manual

[Home](#) » [ULTRA](#) » ULTRA Multi function Table Top Grinder Instruction Manual



Contents [[hide](#)]

- [1 ULTRA Multi function Table Top Grinder Instruction Manual](#)
- [2 Operating Instructions](#)
- [3 SOME VALUABLE TIPS FOR YOUR INFORMATION](#)
- [4 Exploded View](#)
- [5 Know your Ultra Grind+ Gold \(Part by Part\)](#)
- [6 Sequence of operation](#)
- [7 Additional Attachment](#)
- [8 Trouble Shooting Chart](#)
- [9 WARRANTY](#)
- [10 Documents / Resources](#)
- [11 Related Posts](#)

ULTRA Multi function Table Top Grinder Instruction Manual



PERFECTION IS THE ONLY CHOICE

Caution

Do not run the grinder if operating conditions are not normal. In case of any mechanical faults call your nearest Authorised Ultra Service Point/ Dealer. Do not attempt to repair it yourself.

Operating Instructions

Please follow the instructions carefully before attempting to operate the appliance.

We recommend that the ideal soaking time for the medium to be ground is a minimum of four hours, which will vary according to the quantity and quality of the medium.

| Grinding Information* | | | | | | | | | | |
|-----------------------|----------------|-----------------------------|-------------|----------------------|----------------------------|-------------|--------------------------|--------------------------|---------------------|-------------|
| Grinding Medium | Load condition | Measurements before soaking | | Soaking Time in Hrs. | Measurements after soaking | | Water to be added in ml. | Grinding time in minutes | Batter Measurements | |
| | | Wt. in gms. | Vol. in ml. | | Wt. in gms. | Vol. in ml. | | | Wt. in gms. | Vol. in ml. |
| Rice (Raw / Boiled) | Minimum | 170 | 200 | 4 | 230 | 300 | 150 | 10 | 325 | 300 |
| | Maximum | 1250 | 1450 | 4 | 1750 | 2000 | 800 | 30 | 2400 | 2000 |
| Dhal | Minimum | 65 | 75 | 2 | 140 | 200 | 150 | 10 | 250 | 600 |
| | Maximum | 250 | 300 | 2 | 550 | 800 | 500 | 35 | 1000 | 2450 |

- Results under lab test conditions and may vary with actuals

Grinding Instructions

Rice and Dhal should be ground separately.

For better grinding result, do grind Rice first and Dhal next.

Use only shredded coconut for grinding.

SOME VALUABLE TIPS FOR YOUR INFORMATION

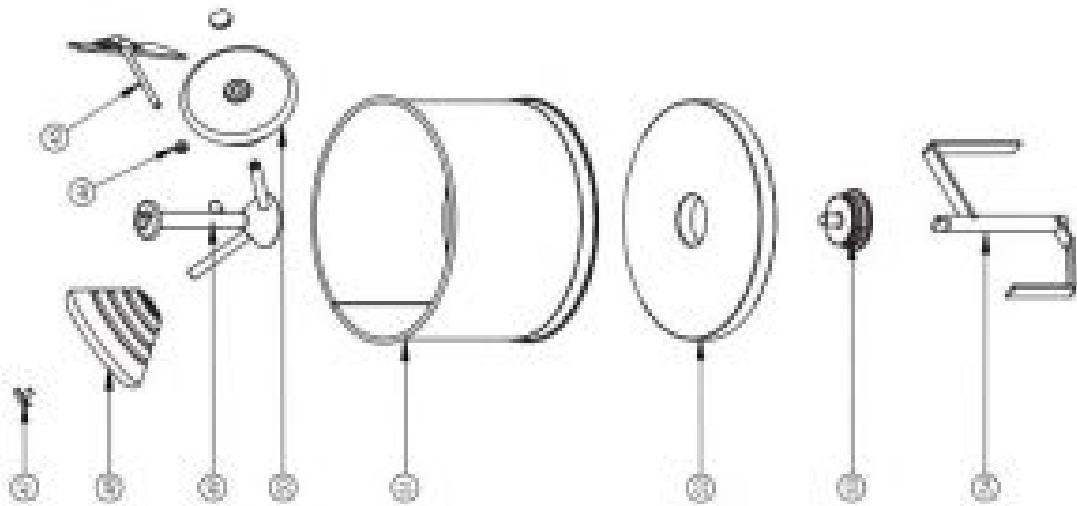
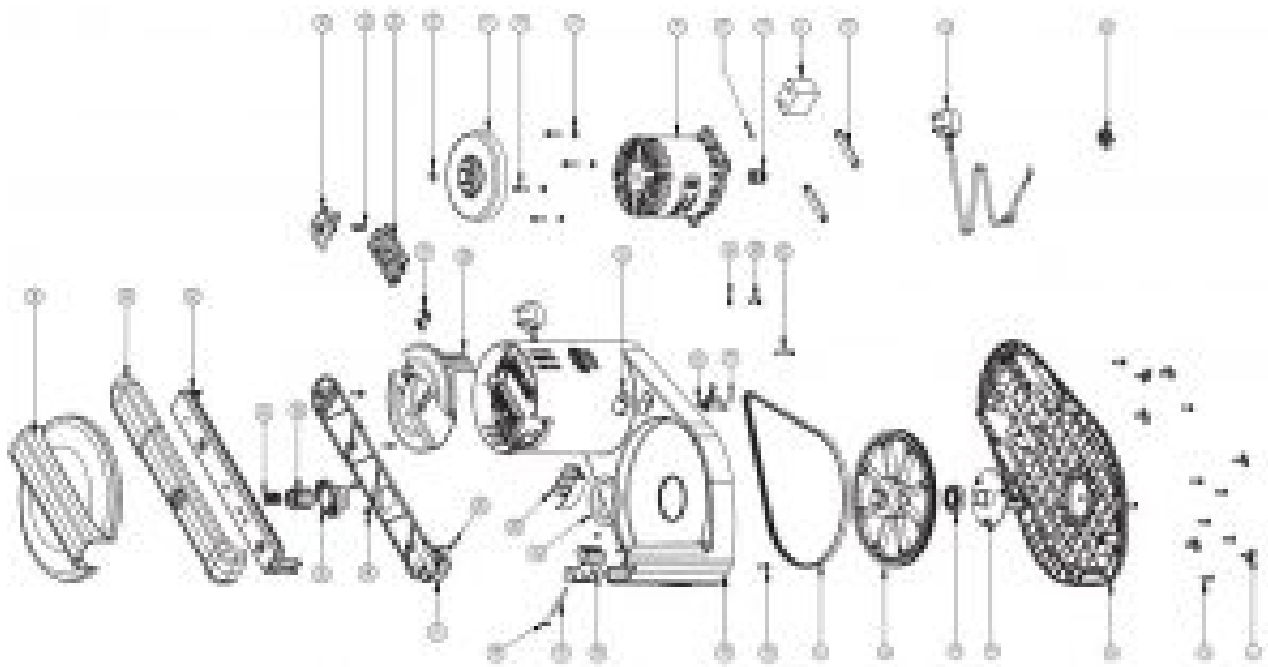
Do's

- Always keep the appliance clean and dry.
- Disconnect the electric cord from the mains when the appliance is not in use.
- Use the appliance only as specified in this manual.
- Close supervision is necessary when the appliance is being operated in the presence of children and handicapped persons.
- Keep the appliance away from heat sources.
- Lift the appliance at its base.
- Store the appliance in its original carton, if not in use for a long time.
- Clean drum and roller holder assembly thoroughly after every use and place it in the machine.
- Keep the grinder in unlocked position while not in use.
- Keep the wiper position facing motor while grinding (Refer Arm lid diagram).

Don't s

- Do not run the grinder empty for more than a minute
- Do not use any other attachments except those provided by the manufacturer.
- Do not put your hand into the drum while the appliance is in operation.
- Do not attempt to unlock the arm while the appliance is in operation.
- Do not pour water on the appliance for cleaning. It is recommended that a damp sponge be used for this purpose.
- Do not attempt to lift the appliance while it is in operation.
- Do not attempt to repair the appliance yourself. In case of any fault, contact our nearest Dealer /Service Point.
- Do not insert any sharp object into the slits provided. This may damage the parts inside.
- Do not lubricate any plastic parts with oil I grease.
- Do not keep the drum up side down after washing.
- Do not attempt to lift the Roller Stone Assembly using wiper.

Exploded View



NOTE:

- The above numbers indicate the serial number in the parts list.
- Please quote the part code number while ordering the spares.

Know your Ultra Grind+ Gold (Part by Part)

| SL No. | Part Code No. | Part Name | Qty | SL No. | Part Code No. | Part Name | Qty |
|--------|---------------|--|-----|--------|---------------|--------------------------------------|-----|
| 1 | 1A10280 | Bottom Shoe | 6 | 28 | 1A20200 | Shell Spring Holder | 1 |
| 2 | 9900600 | Slotted Cheese Head Screw - M5x15 SS | 8 | 29 | 9916800 | Slotted Cheese Head Screw - M5x30 SS | 1 |
| 3 | 1A10180 | Base Frame | 1 | 30 | 9900600 | Slotted Cheese Head Screw - M5x15 SS | 1 |
| 4 | 1A10270 | Bearing Stern | 1 | 31 | 9901300 | Plate Washer - M5 | 2 |
| 5 | 9914800 | Deep Groove Ball Bearing 606422 | 1 | 32 | 1A20000 | Shell Top Cover | 1 |
| 6 | 0781100 | Driven Pulley | 1 | 33 | 1220410 | Lock Spring | 3 |
| 7 | 9907500 | Polg V - Belt - 4P1 810 | 1 | 34 | 1A20000 | Lock | 1 |
| 8 | 0485500 | Connector - 3 Way | 1 | 35 | 1A20600 | Lock Button | 1 |
| 9 | 1310600 | Wire Cord - (310V) | 1 | 36 | 9900600 | Slotted Cheese Head Screw - M5x15 SS | 3 |
| 10 | 1A10580 | Wires Mount | 2 | 37 | 1A20600 | Channel Bottom Cover | 1 |
| 11 | 1310320 | Capacitor | 1 | 38 | 9905500 | Slotted CSK - M5x10 | 2 |
| 12 | 9900500 | Drive Pulley | 1 | 39 | 1A20000 | Rolling | 1 |
| 13 | 2014200 | Hexagon Socket. Cap Screw 'A' M5 x 8 Zinc Plated | 1 | 40 | 1A20000 | Storve | 1 |
| 14 | 1310310 | Motor(110V, 60Hz, 149W) | 1 | 41 | 0100100 | Main Spring | 1 |
| 15 | 9901300 | Plate Washer - M5 | 4 | 42 | 1A20110 | Arm Channel | 1 |
| 16 | 9900200 | Hex Bolt - M5 x 20 SS | 1 | 43 | 1A20400 | Channel Top Cover | 1 |
| 17 | 0701800 | Motor Fan | 1 | 44 | 1A08700 | Hatch | 1 |
| 18 | 9905200 | Cadlag A12 | 1 | 45 | 1A40321 | Wiper | 1 |
| 19 | 0812100 | Self tapping screw - B725 - M3.812 L | 2 | 46 | 9901000 | Hexagon Nut (SS) M5 | 1 |
| 20 | 9900600 | Switch - (230 V & 110V) TDKAC | 1 | 47 | 8102789 | Roller Lock screw | 3 |
| 21 | 1A20600 | Switch Button | 1 | 48 | 1240290 | Topper Roller Assy - I | 1 |
| 22 | 9900600 | Slotted CH - M5x15 SS | 1 | 49 | 1245210 | Roller Holder Assy | 1 |
| 23 | 1A20100 | Shell With Bracket | 1 | 50 | 1240240 | Topper Roller Assy - II | 1 |
| 24 | 1A20400 | Hinge Cover | 1 | 51 | 1A40110 | Cham | 1 |
| 25 | 1A20600 | Hinge - Pin | 1 | 52 | 1A40120 | Flat Stone | 1 |
| 26 | 1A20600 | Hinge Button | 2 | 53 | 1A40200 | Adapter | 1 |
| 27 | 0701700 | Collar Pad | 1 | 54 | 1A60100 | Atta Kneader | 1 |

The Multi Function Table-Top Grinder

Besides grinding Rice and Pulses, the Ultra Grind+ Gold can also be used for

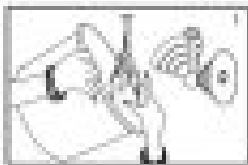
1. Preparing Chutneys
2. Preparing Kurma Masala
3. Preparing Dhal batterforVadas

Additional Attachment Atta Kneader

Technical Data

- **MOTOR:** 150W SINGLE PHASE 1100 RPM
- **VOLTAGE:** 110V Ac60Hz
- **NETT WT. OF GRINDER ONLY:** 12.8 kg
- **CAPACITY:** 2 Its of Soaked Rice

Sequence of operation



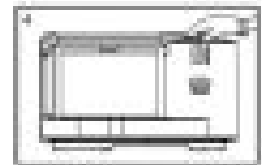
Close drum and roller stones assembly thoroughly.



Place drum on pulley coupler. Gently rotate till drum flows itself.



Place the roller assembly in the drum in position as indicated above.



Close the arm and press gently to lock automatically.



Pour a cup of water into the drum.



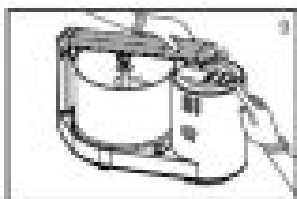
Press the switch downwards to turn on the appliance.



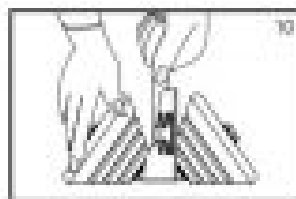
Add the grinding medium in small quantities with adequate water and place the hatch.



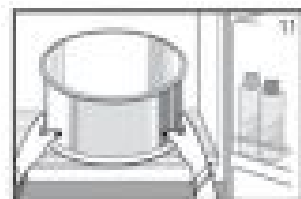
When required consistency is achieved, switch off the appliance.



Remove hatch, hold the arm and press lock to release, then swing the arm upwards and rest it suitably.



Remove roller assembly and wipe down the batter.

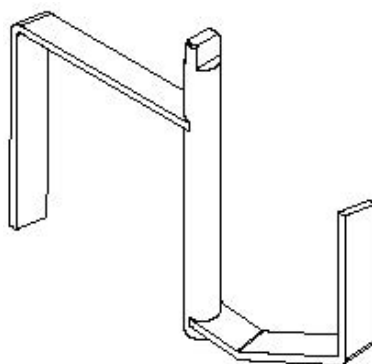


Remove the drum and use required amount of batter. The rest can be stored in your refrigerator.

Note : Pulses/cereals to be ground, should always be added in small quantities to ensure even grinding.

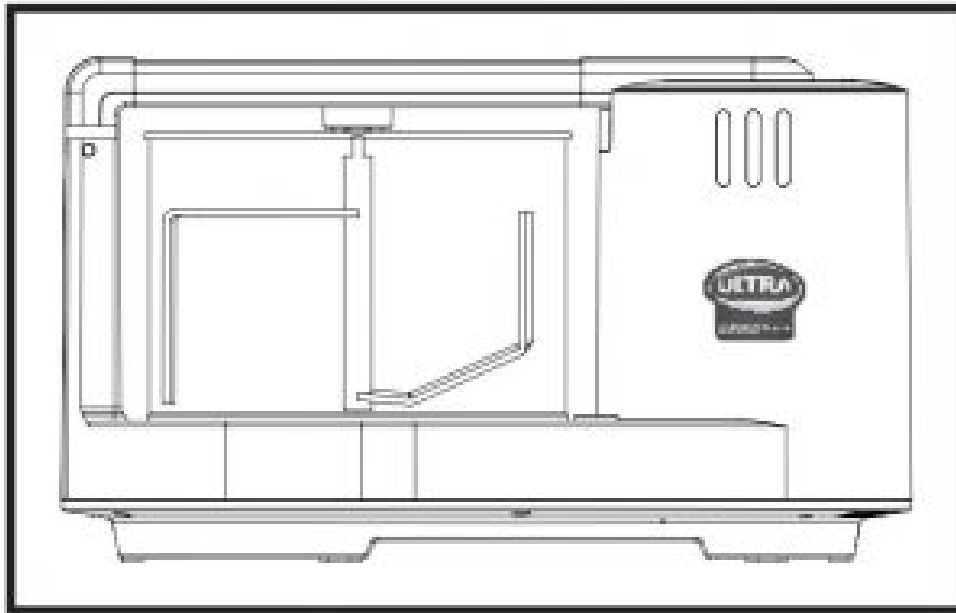
Additional Attachment

Atta Kneader



Effectively kneads atta to the right consistency. The Ultra Atta Kneader makes your rotis, puris and parathas softer and tastier.

Operation



Remove Roller stones and place the atta kneader in the drum. Lock the arm and feed approx 350 gm of atta through the opening provided. Pour little water and switch on the appliance. Add little oil and salt to taste. Add water drop by drop till you get the required consistency.

Trouble Shooting Chart

| WHAT'S WRONG | REASONS | WHAT TO DO |
|---|--|---|
| Unit does not run | No power supply | Check mains |
| | Wiring cord loose / connection / motor failure | Contact nearest service point |
| Unit starts but drum stops suddenly | Overloading of medium | Remove medium and add in small quantities |
| | Low belt tension | Contact nearest service point |
| | Insufficient water | Add water as required |
| Unit is noisy | Incorrect roller position | Check and correct the roller position as printed on arm kit |
| Increase in grinding time | Excess quantity / insufficient soaking time | Reduce quantity / check manual for correct operation |
| | Incorrect roller position | Check and correct the roller position as printed on arm kit |
| | Low voltage | Operate at 110 V AC 50 Hz |
| | Low belt tension | Call Service Point |
| Unit overheating | Motor housing air vents blocked | Use a dry brush to clean air vents |
| | External heat source | Check |
| Blockage | Uneven platform | Check level |
| Unit Drum smells | Motor burnt | Call service point |
| | Drum / Roller / Roller assembly not cleaned well | Clean |
| Belt stops automatically when it is switched on | Faulty switch | Call service point |
| Arm does not lock | Roller assembly not cleaned well | Disconnect roller and clean under running water |
| | Roller not cleaned properly after use | Disconnect roller and clean under running water |
| Roller not rotating | Excessive loading / insufficient water | Remove excess material |
| | Water stuck on pit | Disconnect roller pit and clean |

In case of abnormal operating conditions, contact the nearest Ultra Dealer / Service Point

WARRANTY

Elgi Ultra Industries Limited guarantees this product for normal home use against defects in materials or workmanship for a limited period of 12 months from the date of original retail purchase. During this period Elgi

Ultra Industries Limited has the option to either repair or replace parts free of charge if this product is returned personally or sent through prepaid courier to any Ultra Service Point I Authorized Service Point along with proof-of-purchase and guarantee card duly filled in by the retailer. The decision of Ultra Service Points I Authorized Service Points in determining the cause of failure and repairs required to be carried out will be final and binding under this warranty and cannot be canvassed either by dealer or the retail purchaser on any ground whatsoever. The warrantor shall not be liable for any transportation cost or any damage due to or during transit of the product either way. Repaired units in warranty will be returned to the consumer at his risk and on freight "to pay" basis.



This warranty shall not apply to

- Wear and tear to the product
- Involved in an accident.
- Sold away by the consumer to any other party
- Tampered with or repaired by someone other than our Authorized Service Centre.
- Used in commercial activity.
- Misused by the consumer or used in a manner contrary to the instructions mentioned in this manual.
- Service charges/ labour charges for any rectification I repair

In no event will Elgi Ultra Industries Limited be responsible for any loss or damage, direct to consequential resulting from the careless, negligent or misuse of this product. This warranty is expressly in lieu of all other warranties expressed or implied (statutory or otherwise) and of all other obligations or liabilities on the company's part. No person, agent, distributor, dealer, service centre or company is authorized to change, modify or extend the terms of these warranties in any manner whatsoever.

The company's liability under this warranty is restricted to either repair or substitution of the complained product and not for any monetary payment or damages. Any doubt I disputed claim under this warranty shall only be subject to arbitration by an Arbitrator appointed by ELGI ULTRA INDUSTRIES LIMITED, COIMBATORE. The arbitration shall be at Coimbatore only.

Warranty is applicable only for purchase made through authorized outlet in the country of purchase. The design, specifications and price are subject to change without prior notice.

The above warranty is applicable only for materials/components and not Service/Labour charges incurred in rectification/repair.

Read More About This Manual & Download PDF:

Documents / Resources



[ULTRA Multi function Table Top Grinder](#) [pdf] Instruction Manual

Multi function Table Top Grinder, GRIND GOLD