



## ULINE Spring-Loaded Pallet Positioner Instructions

[Home](#) » [ULINE](#) » ULINE Spring-Loaded Pallet Positioner Instructions 

### Contents

- [1 ULINE Spring-Loaded Pallet Positioner](#)
- [2 SAFETY](#)
- [3 INSTRUCTIONS](#)
- [4 INSTALLING ORANGE SPRING](#)
- [5 Documents / Resources](#)
- [6 Related Posts](#)



**ULINE Spring-Loaded Pallet Positioner**



**TECHNICAL DATA**

SPECIFICATIONS	H-8935
Height (Lowered)	9½"
Height (Raised)	27¾"
Platform Diameter	43⅝"
Load Capacity	4,500 lbs.
Base Length	36"
Base Width	36"
Product Weight	420 lbs.

**SAFETY**

**SAFETY**

Machine should be installed, operated and maintained by trained and/or qualified personnel only.

**LABELING**

Machine has labeling to indicate potential hazards it may pose when operating and/or maintaining. All labels must be legible. If any label is missing, damaged or otherwise illegible, contact the manufacturer for replacement labels.

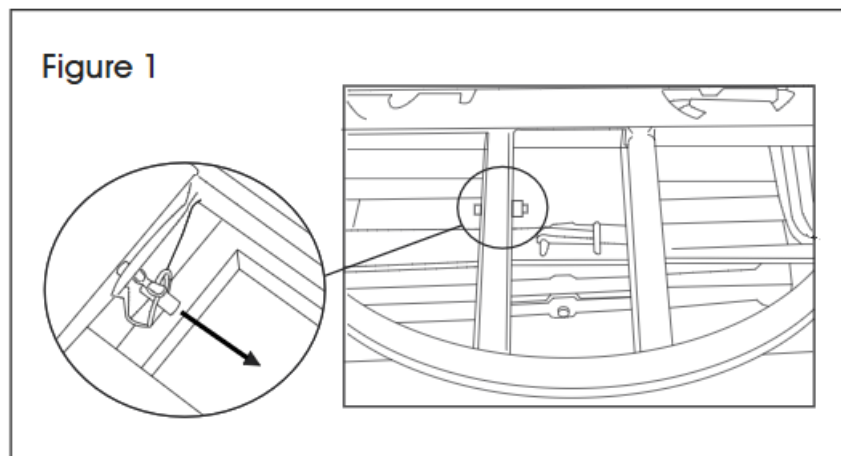
## SIGNAL WORDS

- **DANGER** – indicates a hazardous situation that, if not avoided, will result in death or serious injury.
- **WARNING** – indicates a hazardous situation that, if not avoided, could result in death or serious injury.
- **CAUTION** – indicates a hazardous situation that, if not avoided, will result in a minor or moderate injury.
- **NOTICE** – indicates information considered important, but not hazardous (e.g., messages relating to property damage).

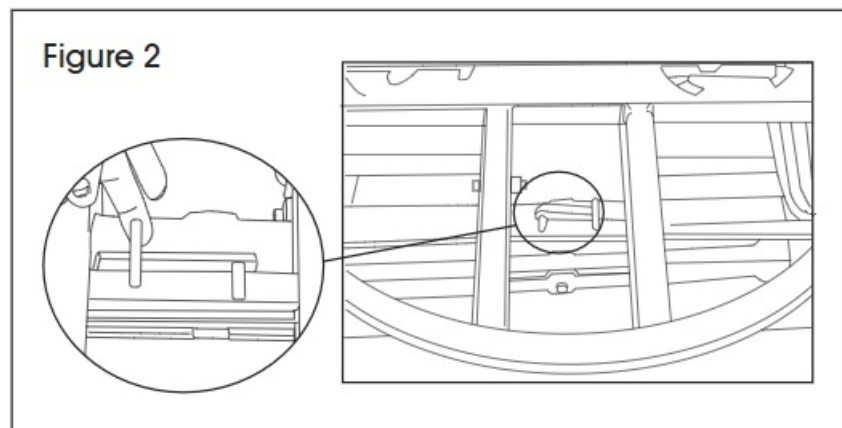
## INSTRUCTIONS

### RAISING THE PLATFORM

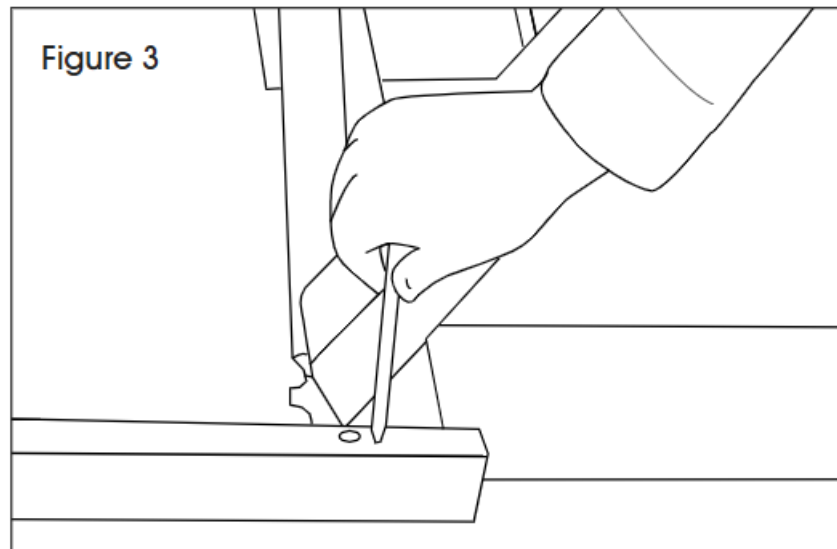
1. Remove the rotating ring by lifting it off platform. Set ring aside.
2. Locate the damper and pin near middle of base. Remove pin to release damper. (See Figure 1)



3. With another person, lift the platform until roller pins meet the latch stops located on each side of platform.
4. Lift latch stops. Keeping the latch stops lifted, continue lifting the platform until it is fully raised. (See Figure 2)

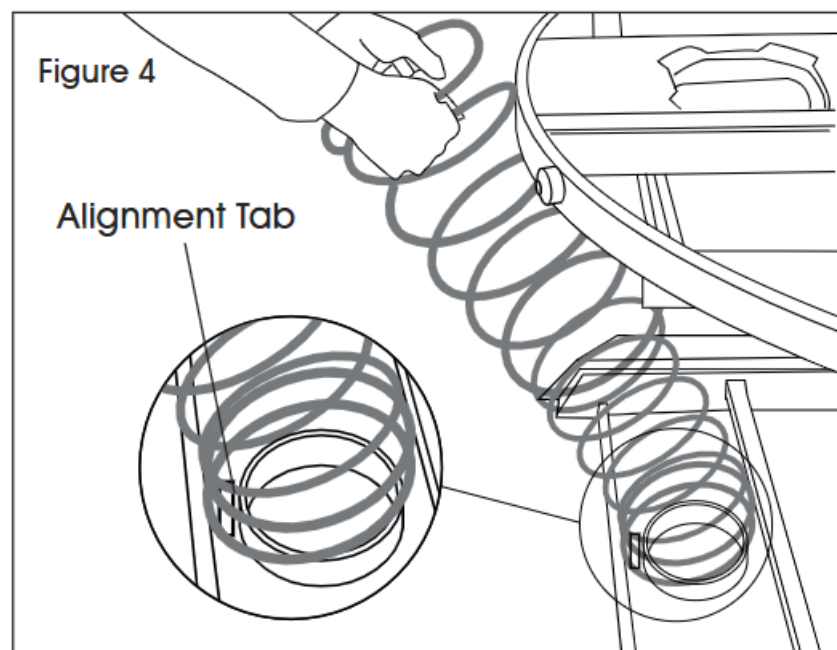


5. While keeping the platform raised, place the pin from step 2 into the hole in the roller track closest to the hinge. (See Figure 3)



## INSTALLING ORANGE SPRING

1. On the side of the base with roller tracks, insert the orange spring into the spring pocket. Ensure alignment tab is inside the spring. (See Figure 4)



2. Firmly holding the spring a few coils down from the top, compress the spring and slide it into the upper spring pocket. Ensure the spring is fully seated in both the upper and lower pockets.

**WARNING!** Do not hold the top coil of the spring. Doing so may cause hands and fingers to be crushed when sliding in the spring.

3. Remove the pin from its current location in the roller track. The platform should now remain elevated.
4. Press down on platform until the two latch stops fall back into place behind roller pins. (See Figure 5)

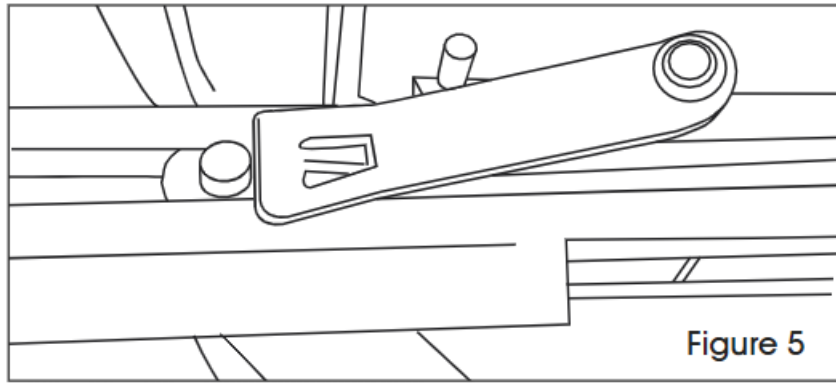
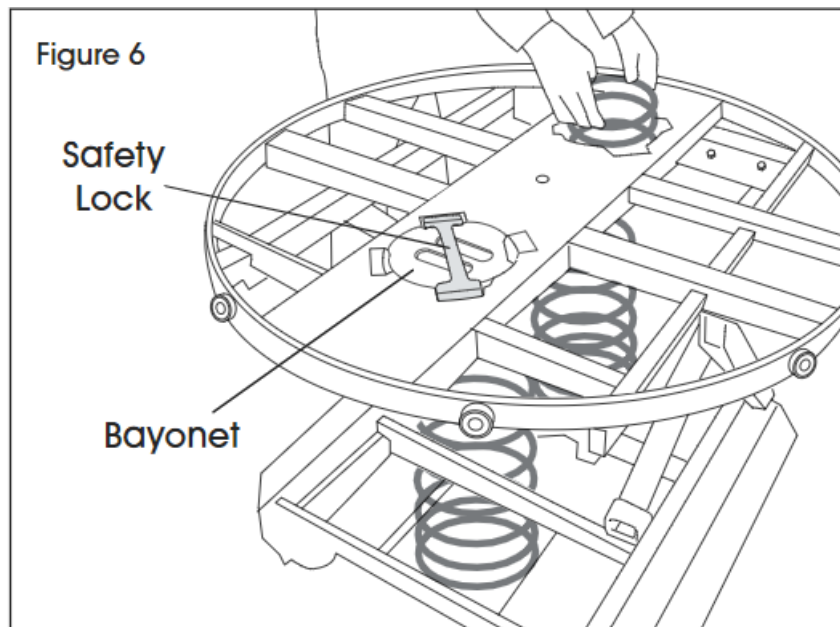


Figure 5

5. Lift damper back into place and secure with pin.
6. Secure spring with the safety lock.

## INSTALLING ADDITIONAL SPRINGS

1. Additional springs can be installed through the bayonet openings as needed. (See Figure 6)

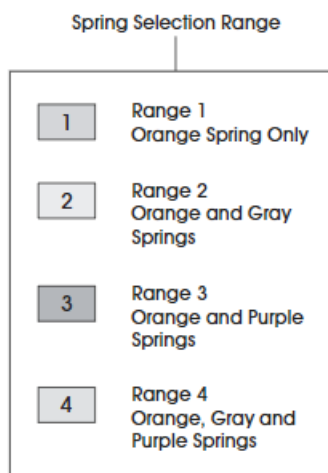


2. Secure the bayonets by placing them into the openings and turning clockwise. Secure the bayonets with the safety lock.
3. For spring configurations, see the Spring Selection chart on page 3.

## SPRING SELECTION

- Spring configurations are based on the specific load weight and height range.
- When the load weight and/or height of the skid changes, a different spring configuration may be needed.
- Refer to the Spring Selection Chart below to determine which springs are required for application.

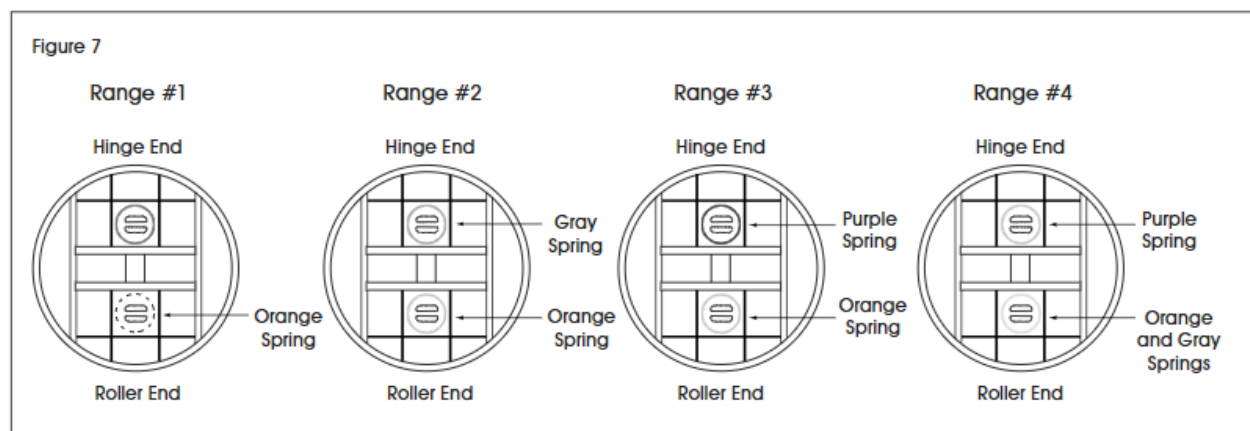
## SPRING SELECTION CHART



		WEIGHT OF FULLY LOADED PALLET										
		0 – 400 lb. (0 – 180 kg)	400 – 800 lb. (80 – 360 kg)	800 – 1,200 lb. (360 – 540 kg)	1,200 – 1,600 lb. (540 – 720 kg)	1,600 – 2,000 lb. (720 – 900 kg)	2,000 – 2,400 lb. (900 – 1,080 kg)	2,400 – 2,800 lb. (1,080 – 1,260 kg)	2,800 – 3,200 lb. (1,260 – 1,440 kg)	3,200 – 3,600 lb. (1,440 – 1,620 kg)	3,600 – 4,000 lb. (1,620 – 1,800 kg)	4,000 – 4,500 lb. (1,800 – 2,025 kg)
HEIGHT OF FULLY LOADED PALLET	58 – 60" (1,473 – 1,524 mm)	1	1	1	1	1	1	2	2	2	3	3
	56 – 58" (1,422 – 1,473 mm)	1	1	1	1	1	2	2	2	2	3	3
	54 – 56" (1,372 – 1,422 mm)	1	1	1	1	1	2	2	2	2	3	3
	52 – 54" (1,321 – 1,372 mm)	1	1	1	1	1	2	2	2	3	3	3
	50 – 52" (1,270 – 1,321 mm)	1	1	1	1	1	2	2	2	3	3	4
	48 – 50" (1,219 – 1,270 mm)	1	1	1	1	1	2	2	2	3	3	4
	46 – 48" (1,168 – 1,219 mm)	1	1	1	1	1	2	2	3	3	3	4
	44 – 46" (1,118 – 1,168 mm)	1	1	1	1	2	2	3	3	3	4	4
	42 – 44" (1,067 – 1,118 mm)	1	1	1	2	2	2	3	3	4	4	4
	40 – 42" (1,016 – 1,067 mm)	1	1	1	2	2	3	3	3	4	4	4
	38 – 40" (965 – 1,016 mm)	1	1	1	2	2	3	3	4	4	4	4
	36 – 38" (914 – 965 mm)	1	1	1	2	2	3	4	4	4	4	4
	34 – 36" (864 – 914 mm)	1	1	2	2	3	3	4	4	4	4	–
	32 – 34" (813 – 864 mm)	1	1	2	3	3	4	4	4	4	–	–
	30 – 32" (762 – 813 mm)	1	1	2	3	3	4	4	4	4	–	–

## SPRING LOCATION

- The location of the springs will vary based on the range used for application.
- The orange spring will always be located on the roller track end of the base. Additional springs will be located as indicated below based on the range being used. (See Figure 7)



# ULINE

The thumbnail shows the first page of a technical manual. At the top left is the ULINE logo and the model number 'H-8935'. Below this is a table of specifications including 'Capacity', 'Height', 'Weight', and 'Dimensions'. To the right of the table is a small diagram of the device. Below the table are sections for 'SAFETY', 'WARNING', and 'INSTALLATION'. At the bottom right is a larger diagram showing the device in use with a pallet.

[ULINE Spring-Loaded Pallet Positioner](#) [pdf] Instructions

Spring-Loaded Pallet Positioner, H-8935, ULINE