



Uhuru WM-09 Superlight Gaming Mouse User Manual

[Home](#) » [Uhuru](#) » Uhuru WM-09 Superlight Gaming Mouse User Manual 

uhuru



WM-09
SUPERLIGHT GAMING MOUSE
User Manual

Contents

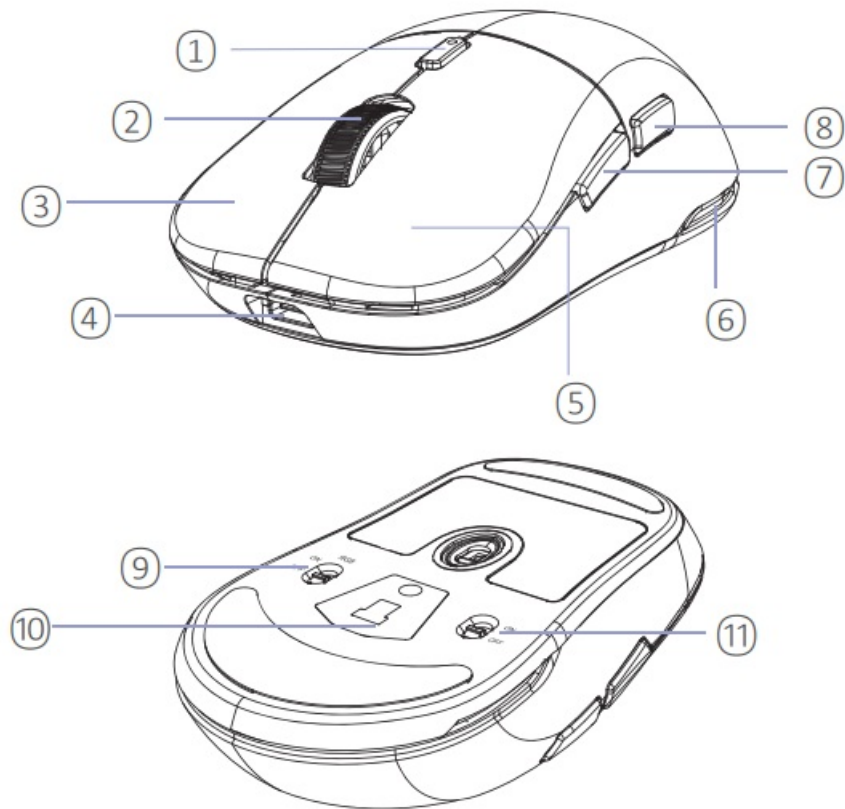
- 1 SPECIFICATIONS**
- 2 OVERVIEW**
- 3 CONNECT TO YOUR DEVICE**
- 4 USING GRIP TAPE STEPS**
- 5 SWITCHING BETWEEN DPI**
- 6 CHARGING YOUR MOUSE**
- 7 LOW POWER INDICATOR**
- 8 RGB SETTING AREA**
- 9 DPI SETTING AREA**
- 10 QUICK Q&A**
- 11 FCC**
- 12 Documents / Resources**
 - 12.1 References**

SPECIFICATIONS

Specifications	
Product Name	Superlight Wireless Gaming Mouse
Model	WM-09
Form factor	Symmetrical Design
Programmable Buttons	6
RGB Light	Customization
RGB Model	11
Mice Sensor	PWM3395
CPI Resolution/DPI	100 — 26,000 DPI
USB Report Rate	125-250-500- 1000HZ
Max acceleration (G)	50g
Max speed (IPS)	650 inches/sec
RF Technical	2.4GHZ(2.402GHz-2.480GHz)GFSK
Batteries Life	400mAh (About 70H)
Switch Type	Optical
Switch Life	80 million clicks
Weight	68G
Dimension	L124*W63*H40mm
System Requirement	
Support OS	WindowsXP/VISTA/7/8/ 10/11
Interface	USB/TYPE-C1.5m/Wirelength
Package List	
Superlight Gaming Mouse	
2.4GHz Receiver(Stocked in mouse) *1	
USB-C Cable *1	
User Manual	
Mouse Grip Tape	

OVERVIEW

1 DPI Switch Button	2 Scroll Wheel	3 Right Click
4 USB charging/data port	5 Left Click	6 RGB Light
7 Browser Forward	8 Browser Back	9 RGB on/off
10 USB Aperture door	11 Power on/off	



Please note:

The driver to program the button could only compatible with Windows system!

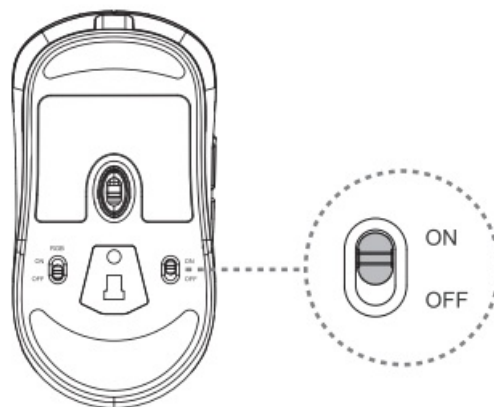
Download Driver: www.uhurumobility.com

CONNECT TO YOUR DEVICE

This Item can be connected either wireless or wired. Please choose according to your preference.”

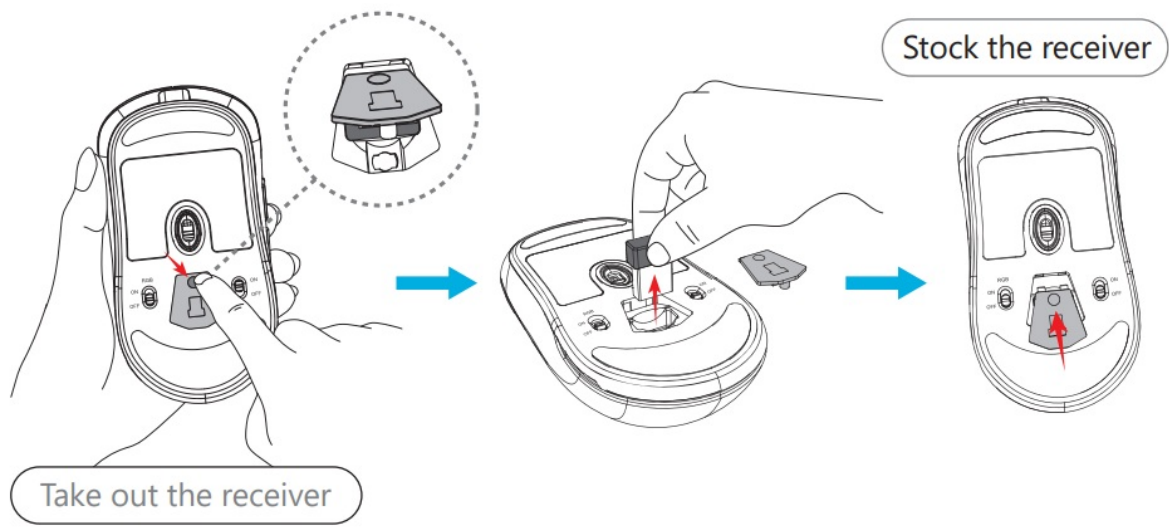
Step 1:

Please make sure the mouse is full of charged and switch on “ON” at the bottom of the mouse



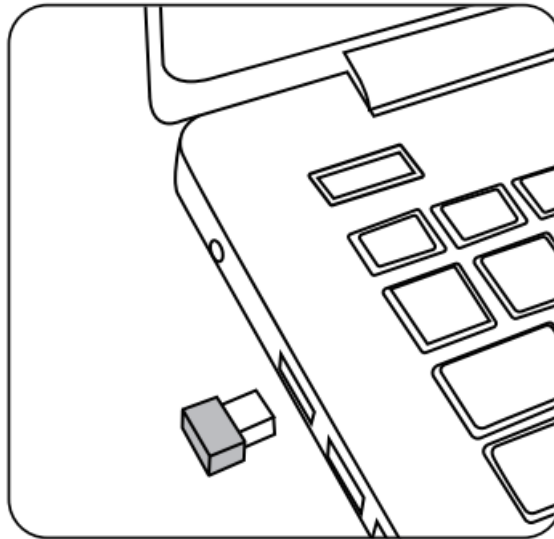
Step 2:

For Wireless mouse, Please press the USB Aperture door and take out the nano receiver.



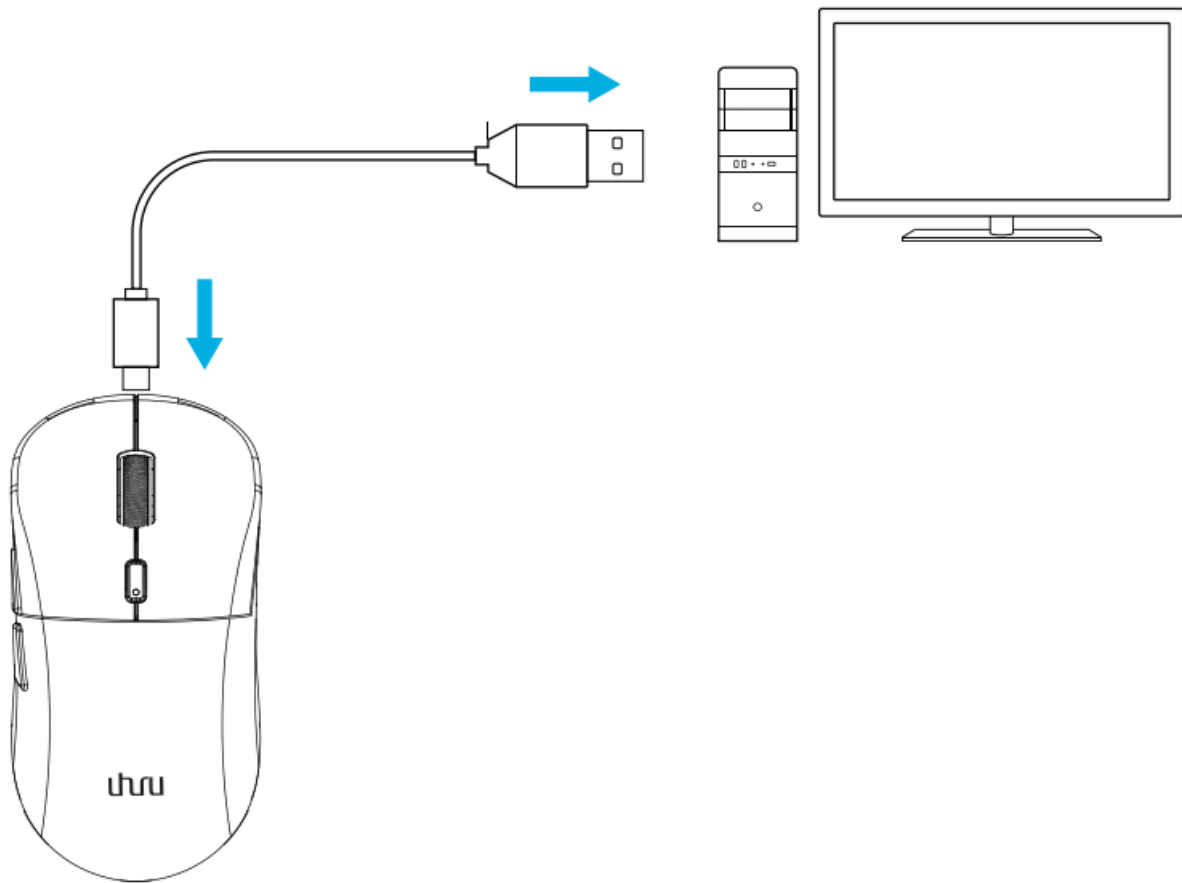
Step 3:

Insert the nano receiver to your device.



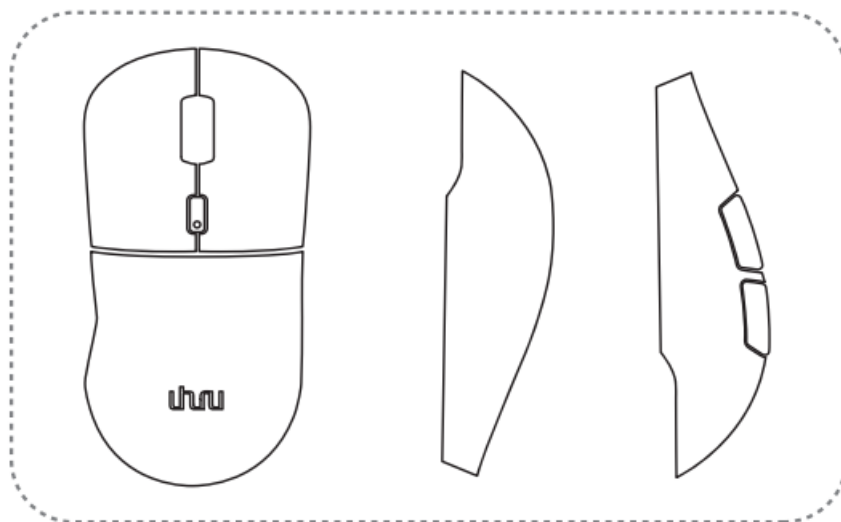
Step 4:

For wired mouse, please plug the charge data cable(Micro-USB cable) directly into the USB port of laptop or PC.



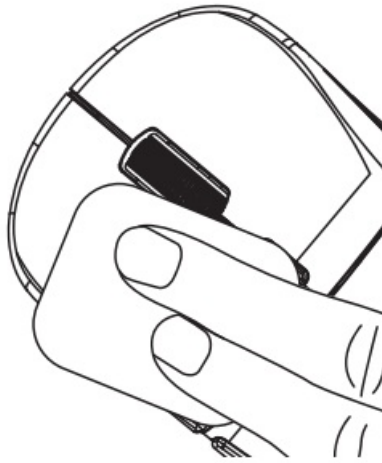
To configure mouse settings like DPI, download WM-09 software from: www.uhurumobility.com
Please note: We could only use the software to program buttons after the mouse is inserted and connected, otherwise it is unable to use the software.

USING GRIP TAPE STEPS



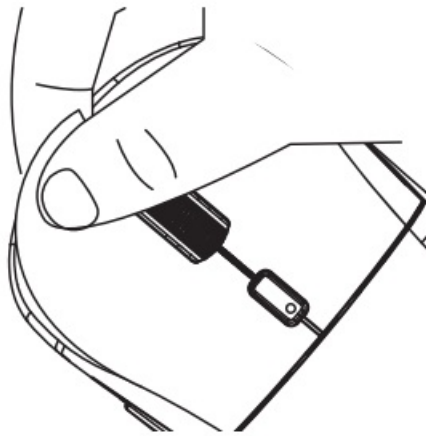
Step1:

Clean surface of mouse with cleaning wipes to remove any oil or dust.



Step 2:

Then carefully align grip tape to mouse surfaces.



SWITCHING BETWEEN DPI

* Change the mouse's DPI to match your play style with a press of the DPI cycle or fine-tune your own sensitivity setting using the WM-09 Software. The DPI Indicator will briefly change its color to show which DPI stage is currently active.

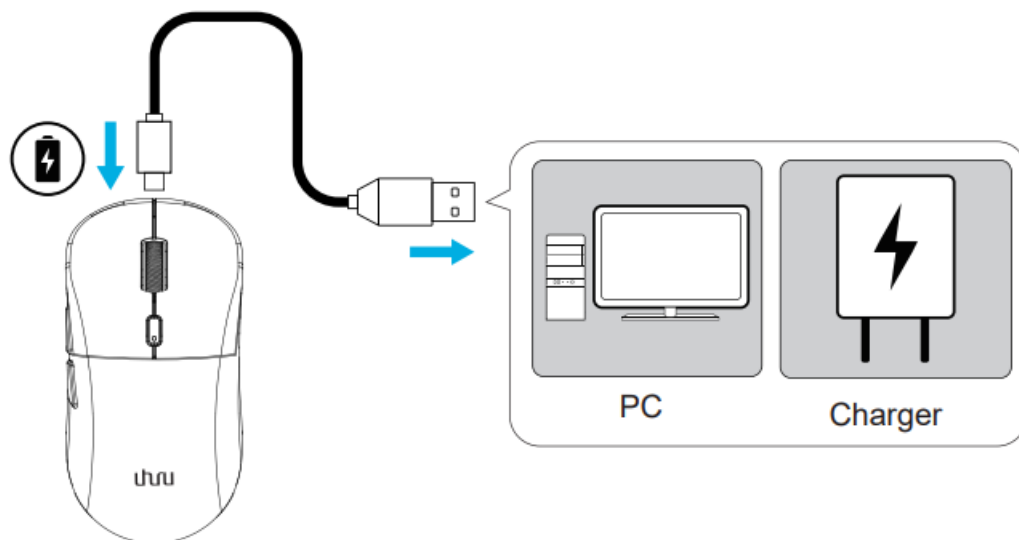
Note: The logo light will show the same color with DPI Indicator.

DPI	Indicator LED
800	Red
1200(default)	Green
1600	Blue
2400	Yellow
3200	Cyan
26000	Purple

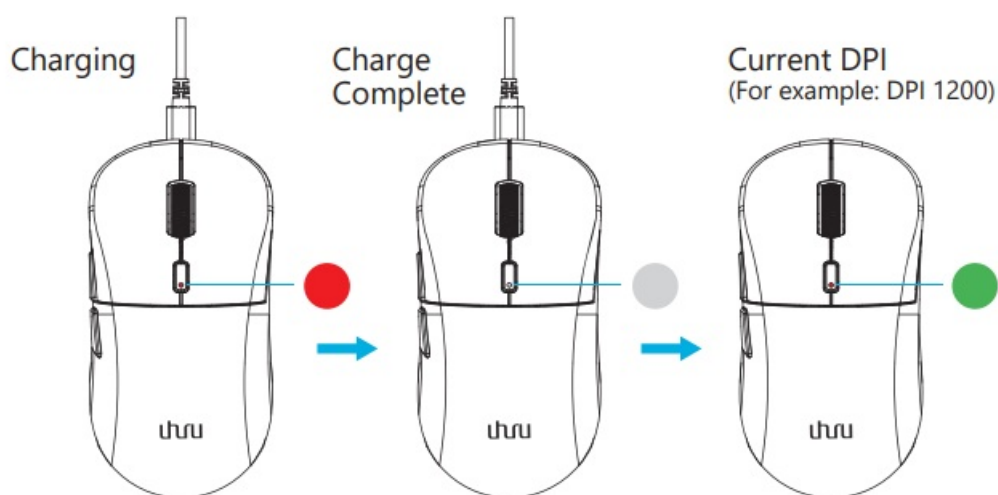
CHARGING YOUR MOUSE

Plug the charging cable from any of your PC's USB ports to the UHURU WM-09 mouse. For best results, please fully charge the mouse before using it for the first time. A depleted battery will be fully charged in approximately 2

hours.

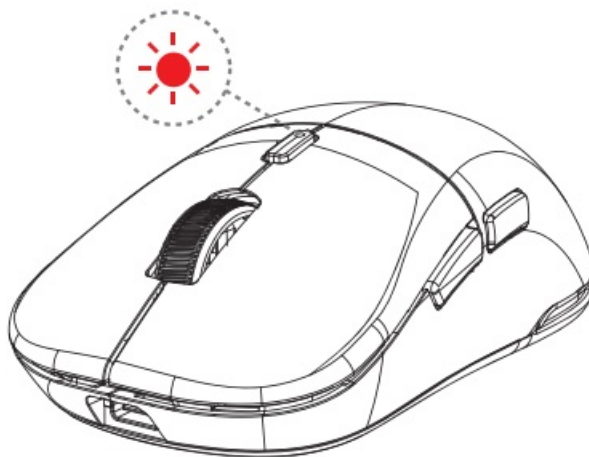


While charging, DPI indicator will show “Red” When it’s fully charged, the red light is goes off. After the charging cable is removed, DPI indicator will show the corresponding color of the current DPI.



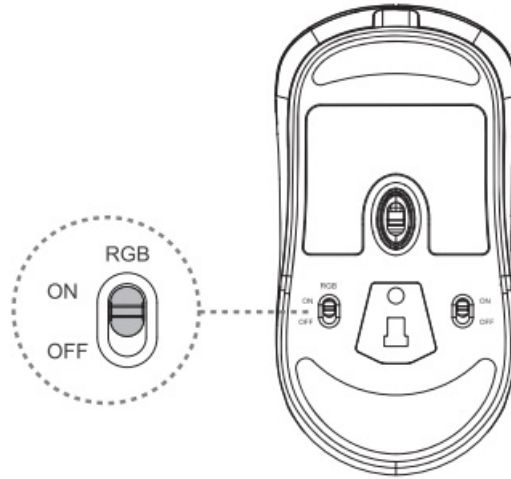
LOW POWER INDICATOR

The LED indicator will blink red twice in repeated intervals to indicate that its battery’s power is less than 5%. When this happens, please plug-in your mouse to charge.



RGB SETTING AREA

The RGB light is off(default), if you need to use it, please turn on the switch RGB button.



1. you can setup the lighting and model of your playstyle from WM-09 software(Download: www.uhurumobility.com).



2. The RBG light color can be customized: Light Settings-Color, click on the color you want to replace will be applied immediately (16.8 million colors in total).



Please note:

1. The backlight can be switched Off, when you want to save the power.
2. To perfect match for gaming, our white lights are slightly colorful, not clear white light.

DPI SETTING AREA

The DPI selection bar corresponds to 6 cool lighting effects: the light color can be adjusted through the color bar. By default, 6 level DPI: 800(Red)/1200(Green)/1600(Blue)/2400 (Yellow)/3200(cyan)/26000(Purple). The light effect can be changed by pressing the dpi button and the right button at the same time for 3-5 seconds.



Each DPI selection bar has DPI value selection, only one can be selected for one selection bar the minimum value is 100.

Note:

1. To switch between 6 levels of DPI, directly click the corresponding DPI to take effect.
2. When you adjusted the value on the DPI bar, you must be apply it to the mouse by clicking “Apply”. If not, the mouse still shows the DPI in the default state. And the default value can be restored by switching any level DPI.
3. When you’ve applied the adjusted DPI and want to restore the default DPI, click the “Reset” in the DPI Settings.



ATTENTIONS

This mouse features a sleeping mode. When you do not use this mouse over 30s, it will enter into sleeping mode, and the LED light will turn off automatically. Any click will wake up this mouse.

When your computer is off, or you unplug the nano receiver from the USB port, the mouse will stop working automatically in order to save power.

The mouse can remain functional for more than 30 hours(light on)-70 hours(light off) on a single charge. The logo light cannot be turned off. And the color of the logo light is consistent with the DPI indicator, which corresponds to the current DPI. For optimal wireless performance, use mouse within 20cm of receiver and greater than 2m from sources of 2.4GHz interference (such as wifi routers).

QUICK Q&A

Q: Where can I find the USB Wireless dongle for the mouse?

A: The USB wireless dongle is stored in the USB Aperture door(back of mouse).

Q: How do I customize DPI sensitivities of the UHURU WM-09 wireless mouse?

Q: How to deal with the crash or malfunction?

A: Unplug the USB interface and plug it in again, and restart the computer.

Q: Why does it no response when switching DPI?

A: Please turn on the software and check out the DPI of the basic setting. Whether the DPI is set at the same level.

Q: How to deal with the mouse not working?

A: Check if the mouse has a charge. Unplug the USB interface, and plug it in again. If the problem isn't solved please restart the device you are using the mouse with/ contact our customer service.

FCC

Changes or modifications not expressly approved by the party responsible for compliance could void the user's authority to operate the equipment.

This equipment has been tested and found to comply with the limits for a Class B digital device, pursuant to Part 15 of the FCC Rules.

These limits are designed to provide reasonable protection against harmful interference in a residential installation. This equipment generates uses and can radiate radio frequency energy and, if not installed and used in accordance with the instructions, may cause harmful interference to radio communications. However, there is no guarantee that interference will not occur in a particular installation. If this equipment does cause harmful interference to radio or television reception, which can be determined by turning the equipment off and on, the user is encouraged to try to correct the interference by one or more of the following measures:

Reorient or relocate the receiving antenna.

- Increase the separation between the equipment and receiver.
Connect the equipment into an outlet on a circuit different from that to which the receiver is connected.
- Consult the dealer or an experienced radio/TV technician for help

This device complies with part 15 of the FCC rules. Operation is subject to the following two conditions (1) this device may not cause harmful interference, and (2) this device must accept any interference received, including interference that may cause undesired operation. This equipment complies with FCC radiation exposure limits set forth for an uncontrolled environment. This equipment should be installed and operated with minimum distance 0cm between the radiator and your body.

Disposal



Always dispose the used appliance at a recycling center. Do not dispose the used appliance together with the household waste.

Note:

Due to 2.4G wave technology adoption, the connection can be subject to interference from obstacles, like walls, metals, or other electronic devices. Please keep the space between the keyboards and the USB receiver free of obstacles. IN line with the policy of continuous development, the manufacturer reserves the right to amend the specifications without prior notification. The illustrations in this user manual are for reference only. Please open according to the real design.

Customer Service

	12-month limited warranty
	Lifetime technical support
	support@uhurumobility.com
	www.uhurumobility.com

Any question, please feel free to contact us.
Fix issue within 24 hours.



<http://www.uhurumobility.com/>

Thank you for your trust!



Documents / Resources

	Uhuru WM-09 Superlight Gaming Mouse [pdf] User Manual WM-09, WM-09 Superlight Gaming Mouse, Superlight Gaming Mouse, Gaming Mouse, Mouse
--	---

References

-  [Uhuru](#)

Manuals+.