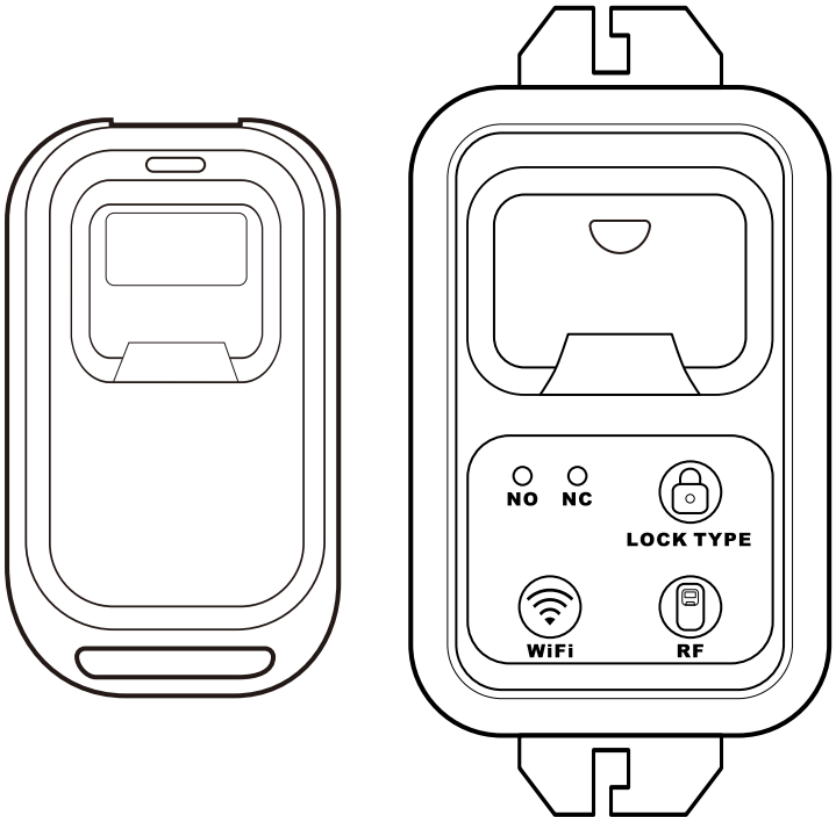




UHPPOTE HBK-RW01 Remote Control User Manual

[Home](#) » [UHPPOTE](#) » UHPPOTE HBK-RW01 Remote Control User Manual 

UHPPOTE HBK-RW01 REMOTE CONTROL



USER MANUAL

Thank you for choosing the HBK-RW01 remote control provided by us.

Contents

- [1 Precaution](#)
- [2 Features](#)
- [3 Specifications](#)
- [4 Wiring Demonstration Diagram](#)
- [5 Operating Settings](#)
- [6 FCC WARNING](#)
- [7 Documents / Resources](#)
 - [7.1 References](#)
- [8 Related Posts](#)

Precaution

For avoidance of damage to the product or injury to the people, please carefully read this manual before use and keep it for further reference.



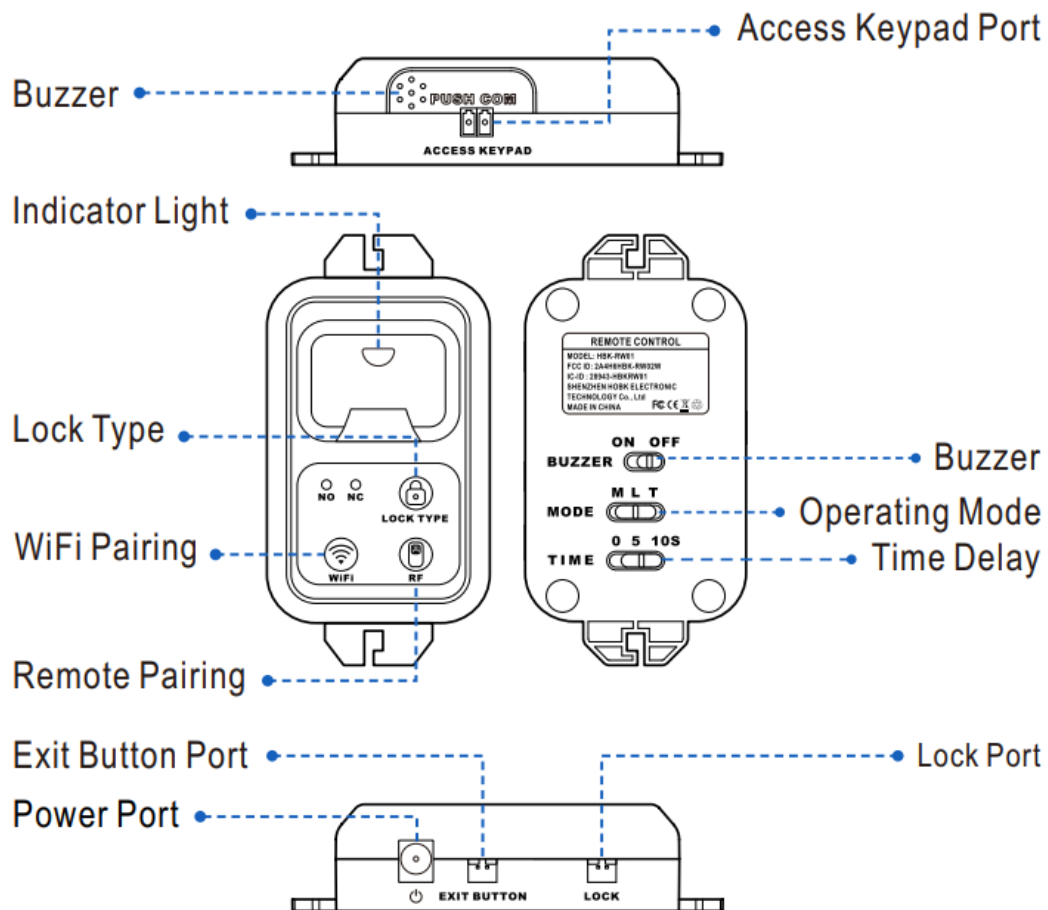
Warnings

- For avoidance of damage to the product, do not expose the product to rain or damp.
- This product is only for indoor use.
- Please use a combination of transmitter and receiver provided by us as we can't guarantee our transmitters or receivers are fully compatible with other manufacturers products.
- The product installation shall be conducted by a professional electrician as it requires specialized knowledge. Incorrect operation may damage the product, or make it inoperable.
- The transmitter and receiver have been paired with each other in factory.
- Keep this product away from children under 3 year old to prevent ingestion.
- Install the receiver in a place out of touch of children, so as to prevent electric shock.
- Please do not put the battery in water, fire or moisture places for avoidance of explosion.
- The battery contains hazardous substance. Return the waste batteries to the recycling bin to avoid contamination to the environment.

Features

- Specialized for the access control system and unable to be applied to other fields.
- Support connecting external access control keypad.
(**Remarks:** Access control keypad is excluded.)
- Built-in buzzer makes sound to remind people when the door is locked or unlocked.
- Built-in WiFi module which enables you to control the HBK-RW01 remotely via free Tuya Smart app.

HBK-RW01 REMOTE CONTROL



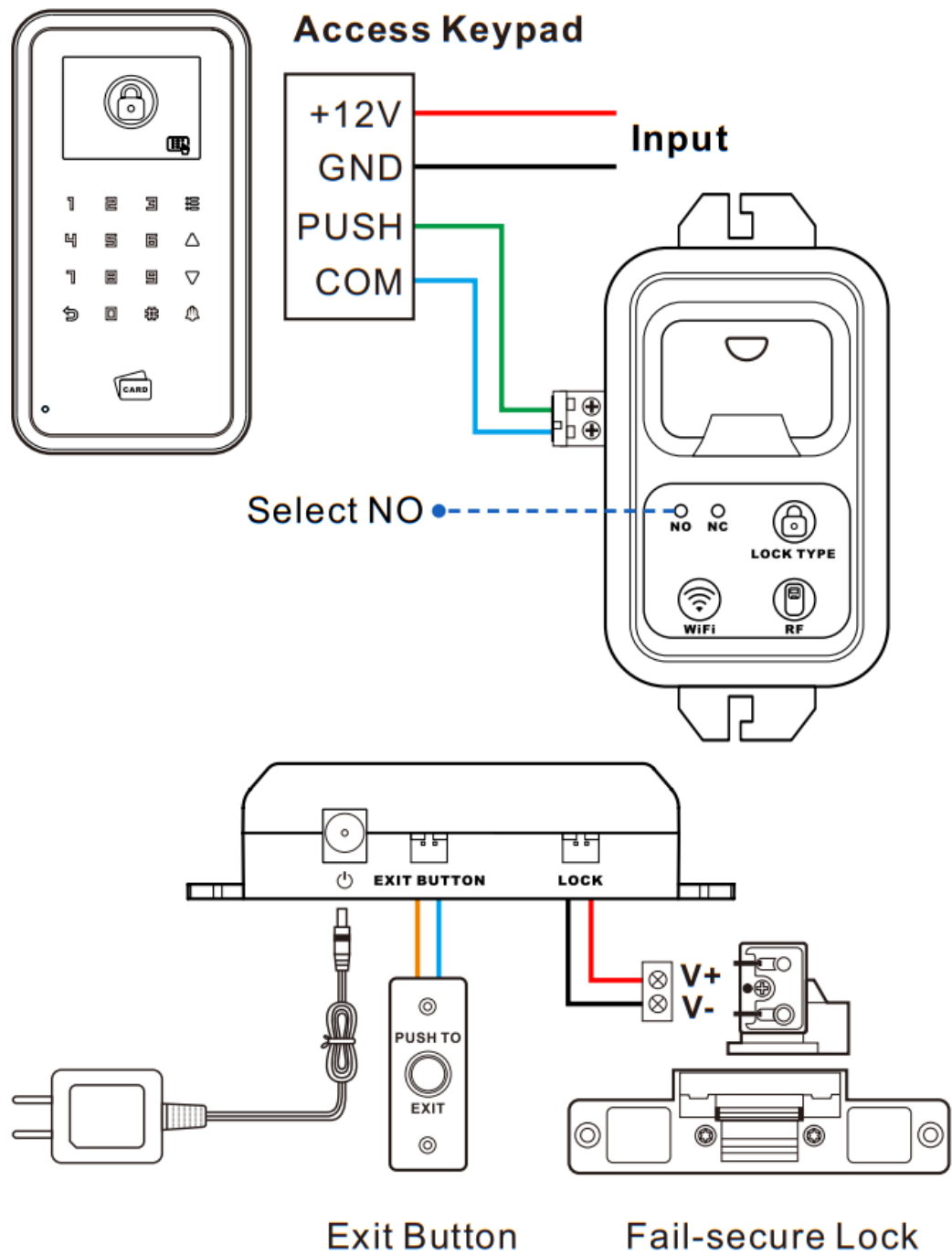
Specifications

Receiver	
Operating Voltage: 12VDC	Output Current: 1A
Operating Environment: Indoor	Lock Output Port: 1
Exit Button Output Port: 1	Keypad Connection Port: 1
RF Frequency: 433.92MHz	RF Channel: 1
WiFi Standard: 2412-2462MHz	Transmitter Support: Max. 40
DC Encoding Type: Learning Code	Built-in Buzzer: Yes
Time Delay: 0/5/10 seconds	Enclosure Material: ABS Plastic
Ambient Humidity: 0%RH-95%RH(Non-condensing)	
Ambient Temperature: -22°F to 140°F	
Operating Method: RF Remote and WiFi	
Operating Distance: 164 feet without block	
Operating Mode: Momentary/Toggle/Latched	
Dimensions: 3-37/64"x 2-21/64"x 1-9/64" [91x59x29mm]	

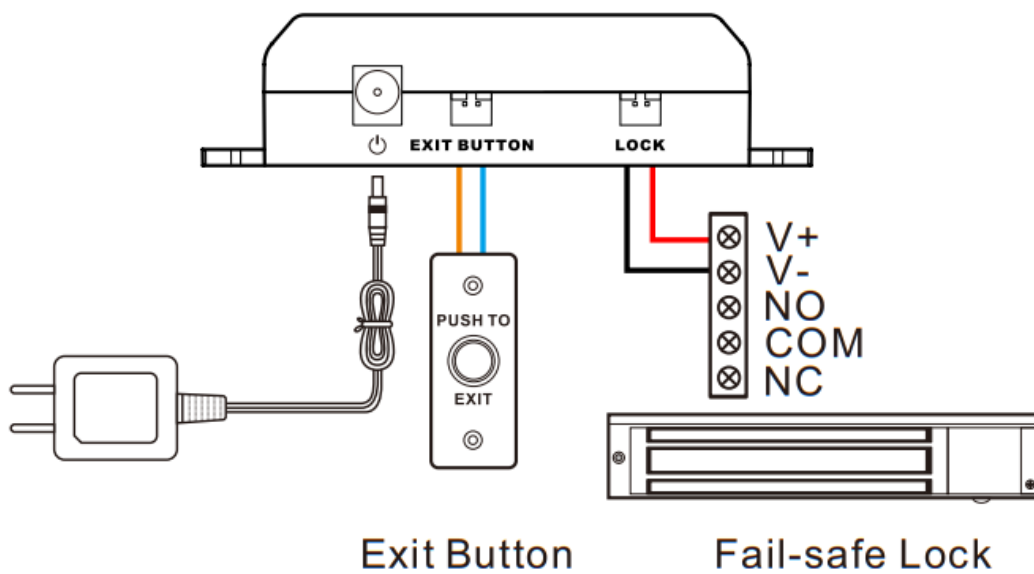
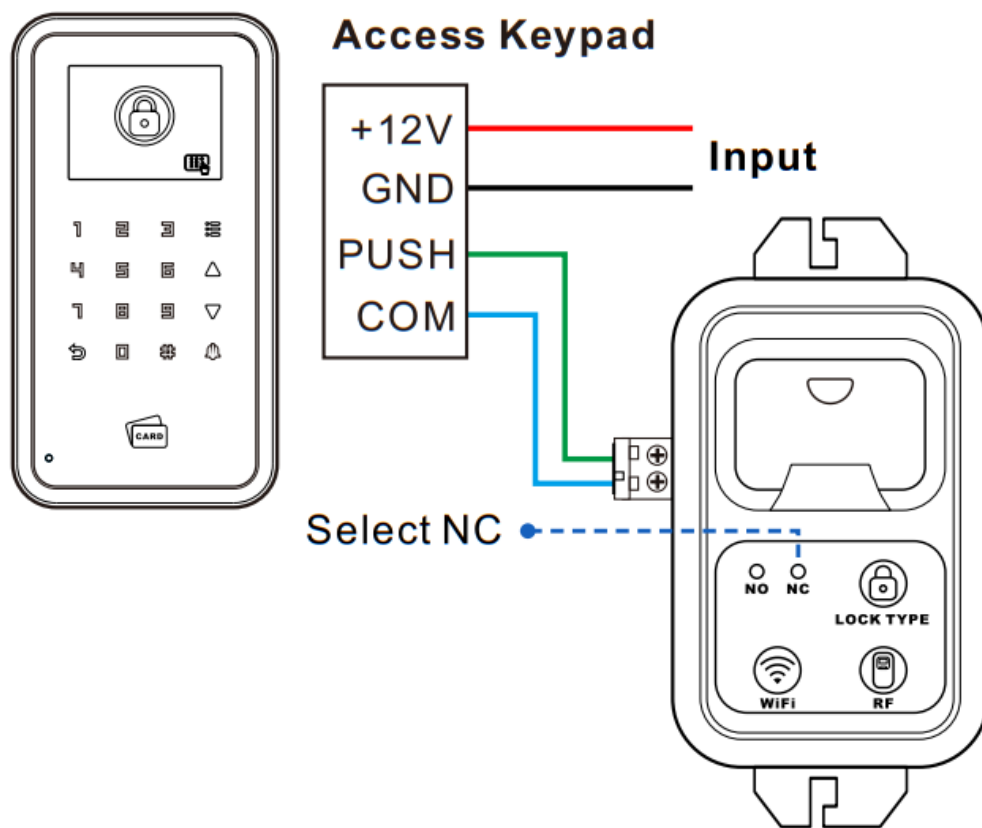
Transmitter	
Operating Current: 10mA	Enclosure Material: ABS Plastic
Batteries Type: CR2016 (Built-in)	
Transmitting Frequency: 433.92MHz	
Operating Voltage: 6VDC (Powered by 2pcs CR2016 batteries)	

Wiring Demonstration Diagram

1. Connect Fail-Secure Lock



2. Connect Fail-Safe Lock



Operating Settings

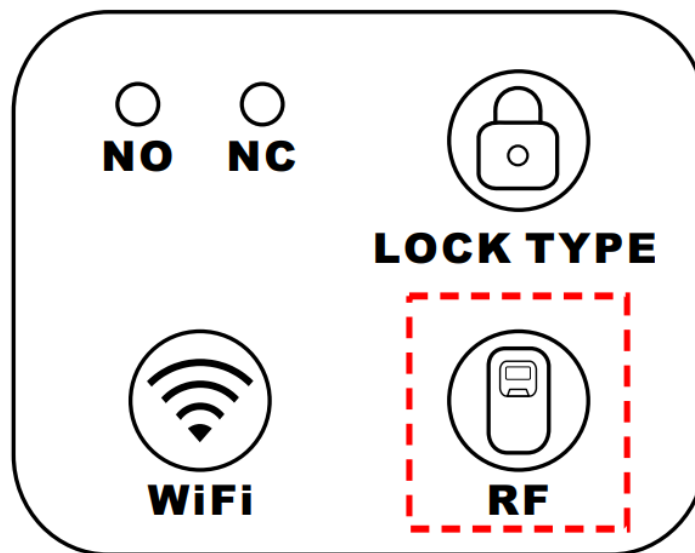
1. Remote Pairing

Tap RF icon followed by press the button on the transmitter within 20 seconds.

2. Unpairing

Tap and hold RF icon for 8 seconds.

Remarks: The operation will clear all paired transmitters, please operate with caution.

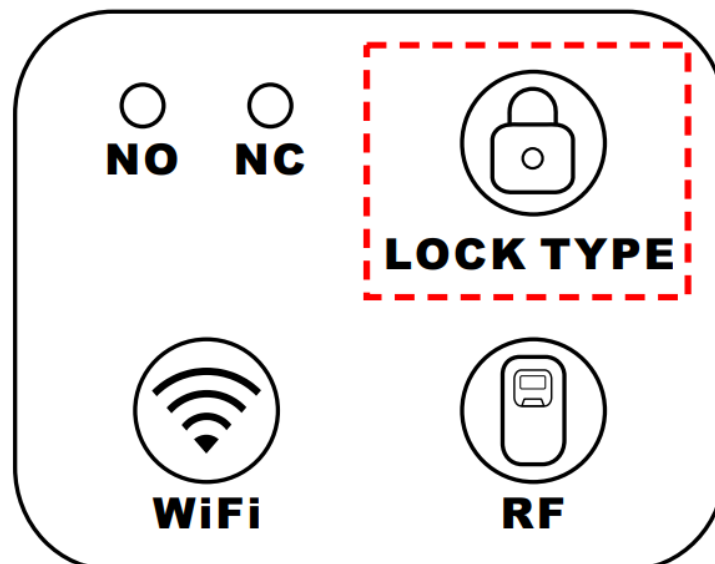


3. Lock Type Setting

NO: Fail-Secure Lock

NC: Fail-Safe Lock

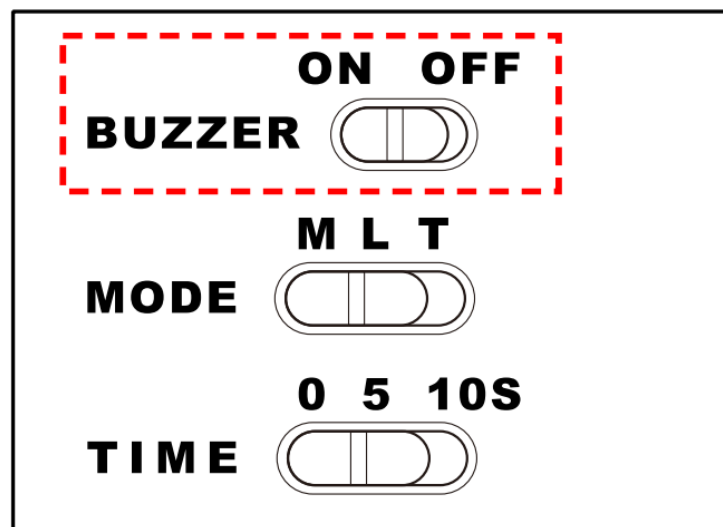
Remarks: Incorrect setting will affect operating of the lock, please confirm the lock type before setting.



4. Buzzer Setting

ON: Enable.

OFF: Disable.



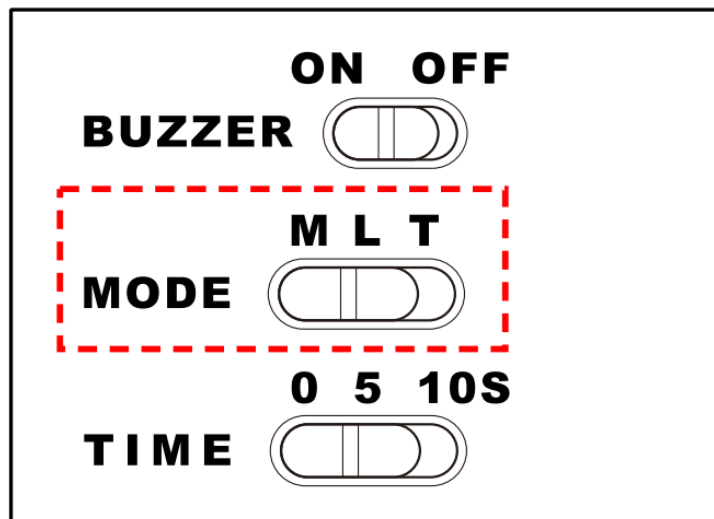
5. Operating Mode Select

Momentary: Press button A for ON, Release button A for OFF.

Latched: Press button A for ON, press button B for OFF.

Toggle: Press button A for ON, press button A again for OFF.

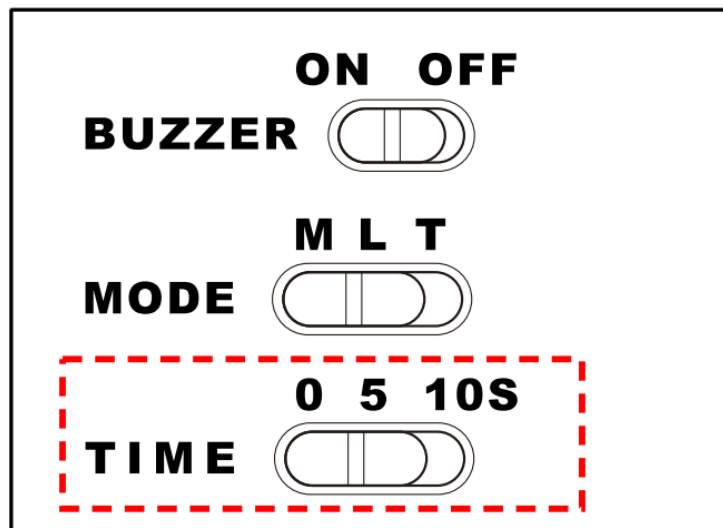
Remarks: Latched is only valid when using a transmitter with 2-buttons.



6. Time Delay Setting

Support 0/5/10 seconds time delay.

Remarks: Only available when Momentary selected.



7. WiFi Pairing

Please refer to 'Tuya Smart' APP Operation Guide in this manual.

'Tuya Smart' APP Operation Guide

1. Download Tuya Smart APP

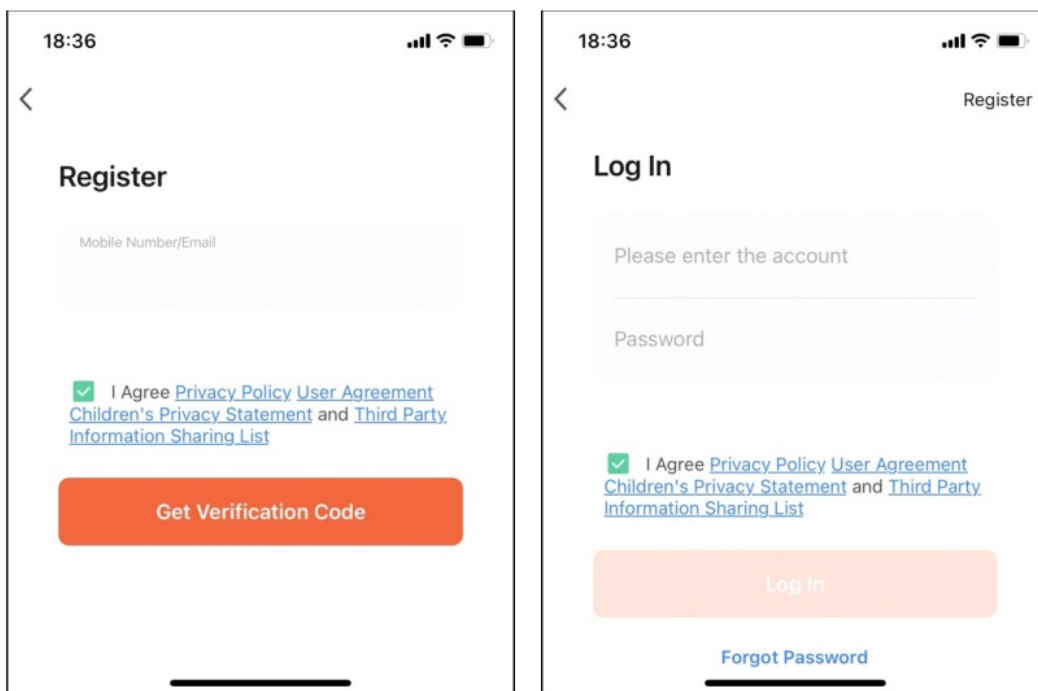
Search 'Tuya Smart' in Apple Store for iOS version or Google Play for Android version.



2. Registration and Login

Tap 'Register' on the top-right corner, then input a valid mobile number or email address and tap 'Get Verification Code'.

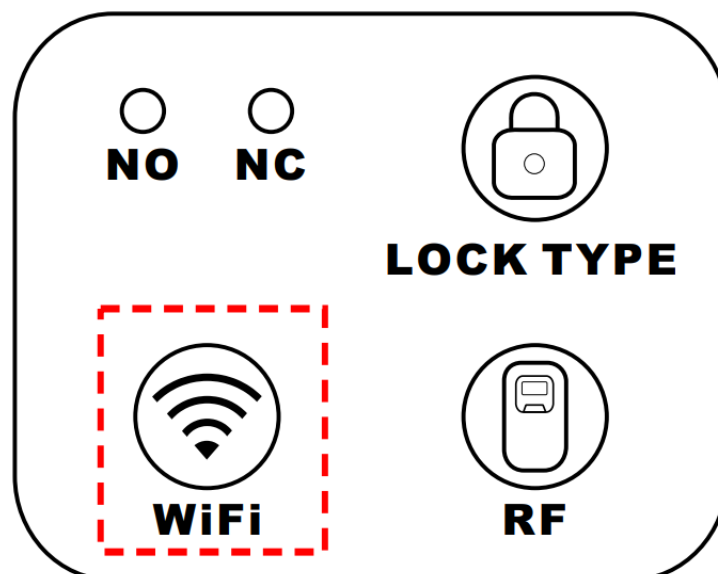
Enter verification code and set password, tap 'Done'.



3. WiFi Pairing

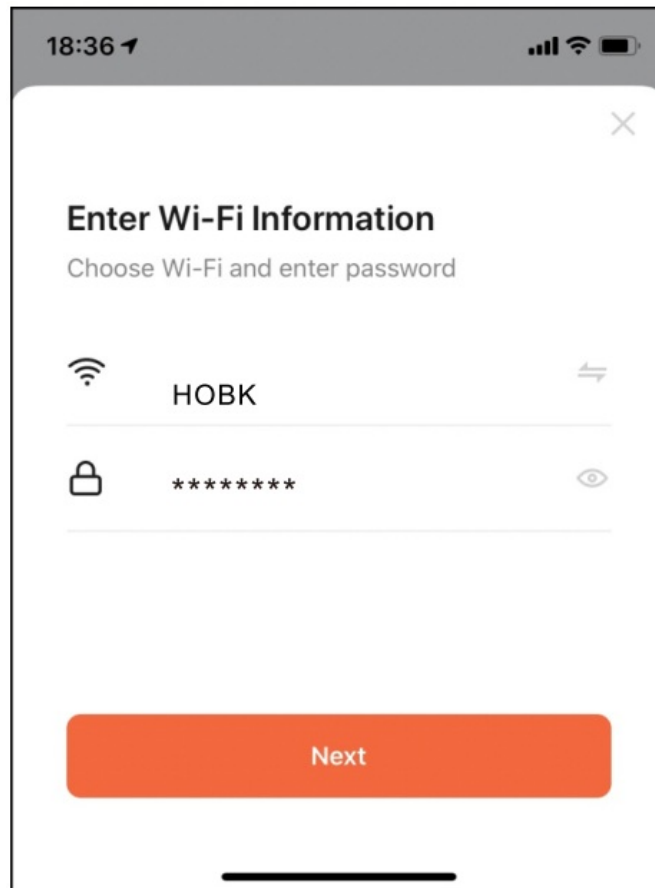
Step 1. Power the HBK-RW01 with a 12VDC power adapter.

Step 2. Tap and hold WiFi icon on the HBK-RW01 for 5 seconds to enter pairing mode.



Step 3. Tap 'Add Device' on the home page of Tuya app followed by tap 'Add' to enter Wi-Fi information.

Step 4. Choose Wi-Fi and enter password.

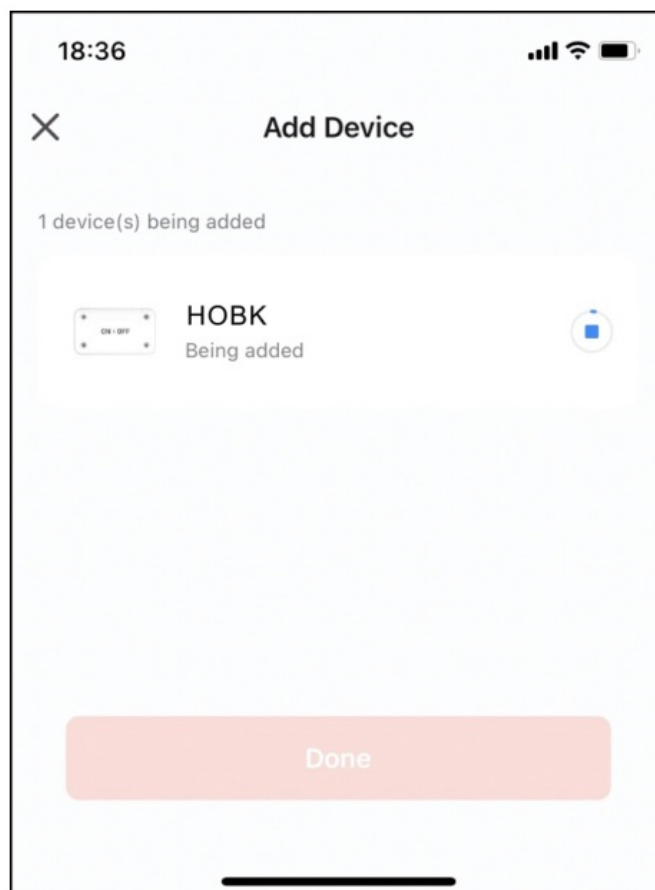


The screenshot shows the 'Enter Wi-Fi Information' screen in the Tuya app. At the top, the status bar displays the time 18:36, signal strength, Wi-Fi icon, and battery level. The app header has a close button (X) in the top right corner. The main title is 'Enter Wi-Fi Information' with a subtitle 'Choose Wi-Fi and enter password'. Below this, there are two input fields: the first is for the Wi-Fi name, showing 'HOBK' with a Wi-Fi icon on the left and a refresh icon on the right; the second is for the password, showing eight asterisks with a lock icon on the left and a toggle visibility icon on the right. At the bottom, there is a large orange button labeled 'Next'.

The Wi-Fi must be the same as the phone connecting, otherwise it will cause offline problem.

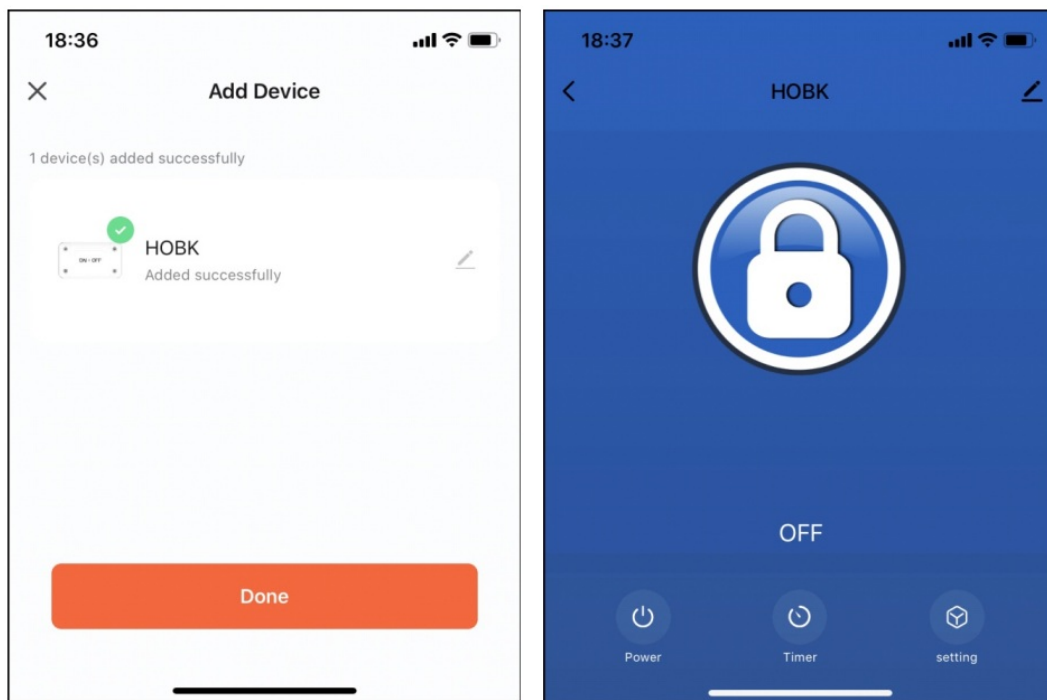
The Tuya Smart only supports 2.4GHz Wi-Fi communication protocol and can't support 5GHz.

Step 5. The Tuya Smart app will search for nearby device and connected to the HOBK-RW01.



The screenshot shows the 'Add Device' screen in the Tuya app. At the top, the status bar displays the time 18:36, signal strength, Wi-Fi icon, and battery level. The app header has a close button (X) in the top left corner and the title 'Add Device' in the center. Below the header, it says '1 device(s) being added'. There is a single device card for 'HOBK' with a status of 'Being added'. The card includes a small device icon on the left and a blue square icon on the right. At the bottom, there is a large light red button labeled 'Done'.

Step 6. Name the added device .



FCC WARNING

This device complies with part 15 of the FCC Rules. Operation is subject to the following two conditions: (1) this device may not cause harmful interference, and (2) this device must accept any interference received, including interference that may cause undesired operation. Any changes or modifications not expressly approved by the party responsible for compliance could void the user's authority to operate the equipment.

NOTE: This equipment has been tested and found to comply with the limits for a Class B digital device, pursuant to Part 15 of the FCC Rules. These limits are designed to provide reasonable protection against harmful interference in a residential installation. This equipment generates, uses and can radiate radio frequency energy and, if not installed and used in accordance with the instructions, may cause harmful interference to radio communications. However, there is no guarantee that interference will not occur in a particular installation.

If this equipment does cause harmful interference to radio or television reception, which can be determined by turning the equipment off and on, the user is encouraged to try to correct the interference by one or more of the following measures:

- Reorient or relocate the receiving antenna.
- Increase the separation between the equipment and receiver.
- Connect the equipment into an outlet on a circuit different from that to which the receiver is connected.
- Consult the dealer or an experienced radio/TV technician for help.

To maintain compliance with FCC's RF Exposure guidelines, This equipment should be installed and operated with minimum distance between 20cm the radiator your body: Use only the supplied antenna.

UHPPOTE

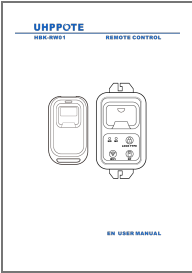
© 2022 HOBK Electronic Technology Co., Ltd

All rights reserved



>75% recycled paper

Documents / Resources

	<p>UHPPOTE HBK-RW01 Remote Control [pdf] User Manual</p> <p>HBK-RW01 Remote Control, HBK-RW01, Remote Control, Control</p>
---	--

References

- [User Manual](#)

Manuals+. [Privacy Policy](#)

This website is an independent publication and is neither affiliated with nor endorsed by any of the trademark owners. The "Bluetooth®" word mark and logos are registered trademarks owned by Bluetooth SIG, Inc. The "Wi-Fi®" word mark and logos are registered trademarks owned by the Wi-Fi Alliance. Any use of these marks on this website does not imply any affiliation with or endorsement.