



# UHPPOTE HBK-R01 Remote Control Switch User Manual

[Home](#) » [UHPPOTE](#) » UHPPOTE HBK-R01 Remote Control Switch User Manual

## Contents [ [hide](#) ]

- [1 UHPPOTE HBK-R01 Remote Control Switch](#)
- [2 PRECAUTION](#)
- [3 WARNINGS](#)
- [4 MAIN FEATURES](#)
- [5 SPECIFICATIONS](#)
- [6 Transmitter:](#)
- [7 MAIN COMPONENTS](#)
- [8 OPERATING SETTINGS](#)
- [9 WIRING DIAGRAM](#)
- [10 WIRING DEMONSTRATION DIAGRAM](#)
- [11 WIRING DEMONSTRATION DIAGRAM](#)
- [12 TROUBLESHOOTING](#)
- [13 Documents / Resources](#)
- [14 Related Posts](#)



**UHPPOTE HBK-R01 Remote Control Switch**



Thank you for choosing the wireless remote control switch provided by Sy use. Occur great is ty Co provide the best products and service to all of you!

## PRECAUTION

For avoidance of damage to the product or injury to the people, please carefully read this manual before use and keep it for future reference.

## WARNINGS

- For avoidance of damage to the product, do not expose the product to rain or dampness.
- This product is only for indoor use.
- Please use a combination of transmitter and receiver provided by us, we can not guarantee our transmitter or receivers are fully compatible with other manufacture's products.
- The product installation shall be conducted by a professional electrician as it requires specialized knowledge. Incorrect operation may damage the product, or make it inoperable.
- The transmitter and receiver have been paired with each other in factory
- Keep this product away from children under 3 years old to prevent ingestion.
- Install the receiver in a place out of touch of children, so as to prevent electric shock.
- Please do not put the battery in water, fire or moisture places for avoidance of explosion.
- The battery contains hazardous substance. Return the waste batteries to the recycling bin to avoid contamination to the environment.

## MAIN FEATURES

Specialized for the access control system and unable to be Home Security Camera applied to other fields.

- The number of the remotes which can be connected to one receiver
- Toggle switch makes it more convenient to choose your desired operating mode (Toggle, Latched and Momentary).
- Support connecting external access keypad and 12VDC active buzzer (Note: Access keypad and buzzer are not included.)
- Built-in diode, real-time protecting relay, door lock and buzzer, prolonging the service life.

SPECIFICATIONS

Receiver:

- Operating Voltage: 12VDC · Frequency: 433MH
- operating Current: 20mA · Operating Temperature: -30~75°C
- RF Channels: One
- Number of Remotes can be connected to one Receiver: ≤40
- Receiving Range: 50 meters in open space
- Built-in DC power connector for easy wiring
- Operating Mode: Momentary / Toggled / Latched
- DC Encoding Type: Learning code

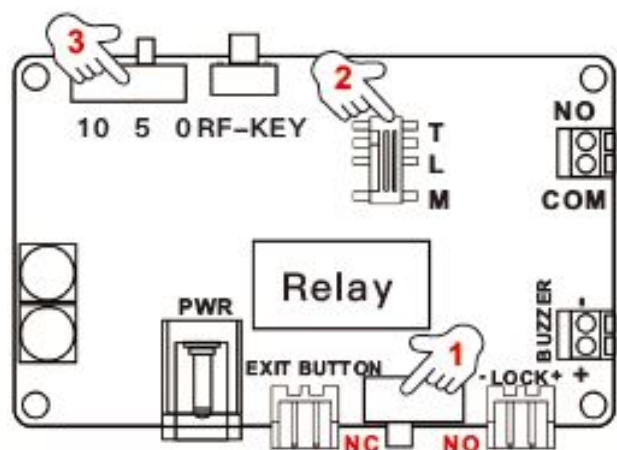
Transmitter:

- Operating Current: 10mA · Case Material: Plastic
- Operating Voltage: 6VDC (Built-in button battery)
- Powered by: 2pcs CR2016/3V batteries
- Transmitting Frequency: 433MHz

MAIN COMPONENTS

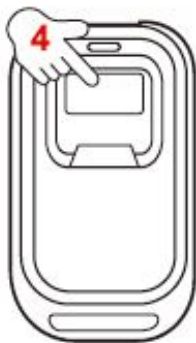
Components	Model	Manufacturer
MCU	STM8S003F3	ST
Linear Regulator	SPX117-3.3	SIPEX
RF Transceiver Chip	SYN500R	SYNOXO
Relay	G5Q	OMRON

OPERATING SETTINGS



1. Lock Mode Select NO: Fail-Secure Lock NC: Fail-Safe Lock

2. Operating Mode Select T: Toggle L: Latched M: Momentary



### 3. Time Delay Select

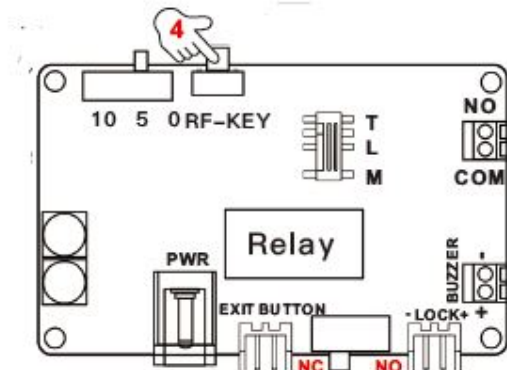
Support 0/5/10 seconds locking delay time, default is 5 seconds.

### Transmitter Paring

Press the RF-KEY on the receiver once, and the indicator on it will flash green once. Then press the button on the transmitter within 20 seconds, the LED indicator on the receiver will flash green three times to indicate the paring is successful.

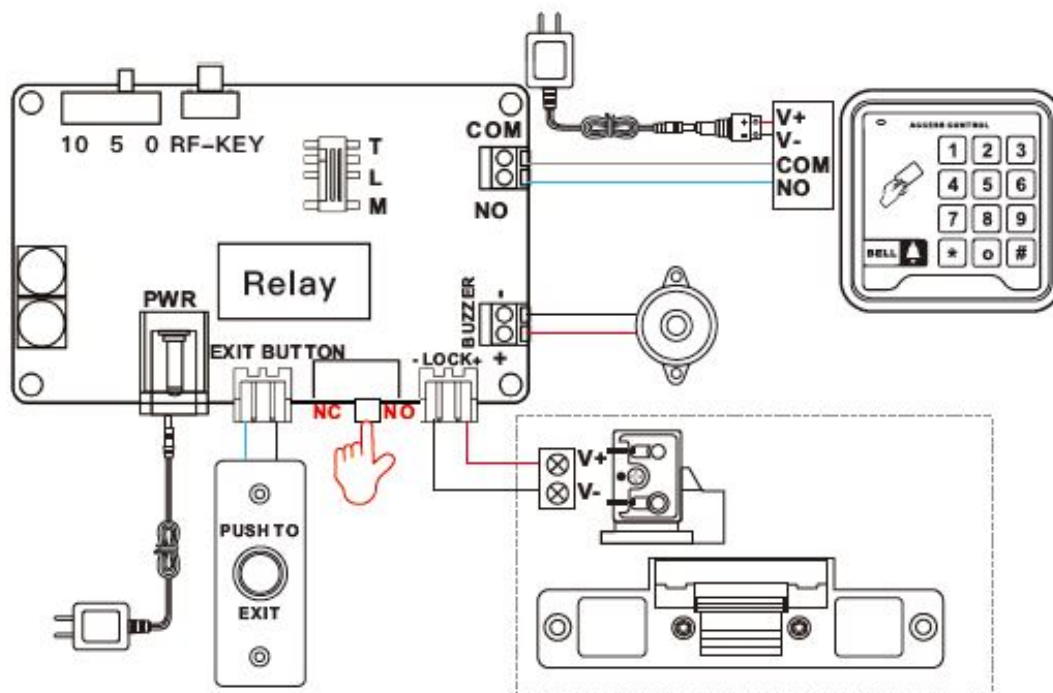
### Clear Code

Press and hold the RF-KEY for 8 seconds until the indicator changes from green to red.

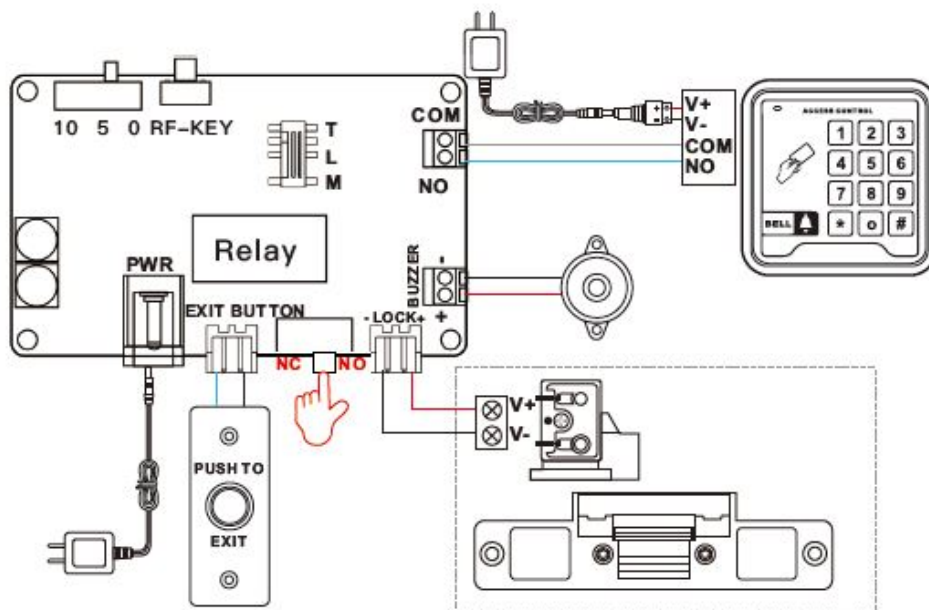


## WIRING DIAGRAM

1. When connecting Fail-Secure Lock

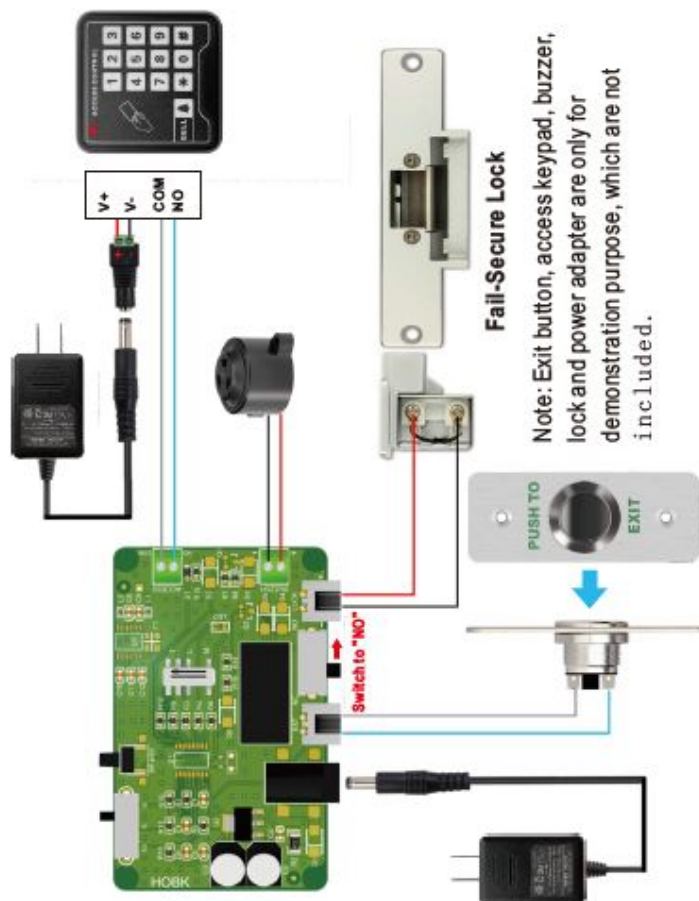


2. When connecting Fail-Safe Lock



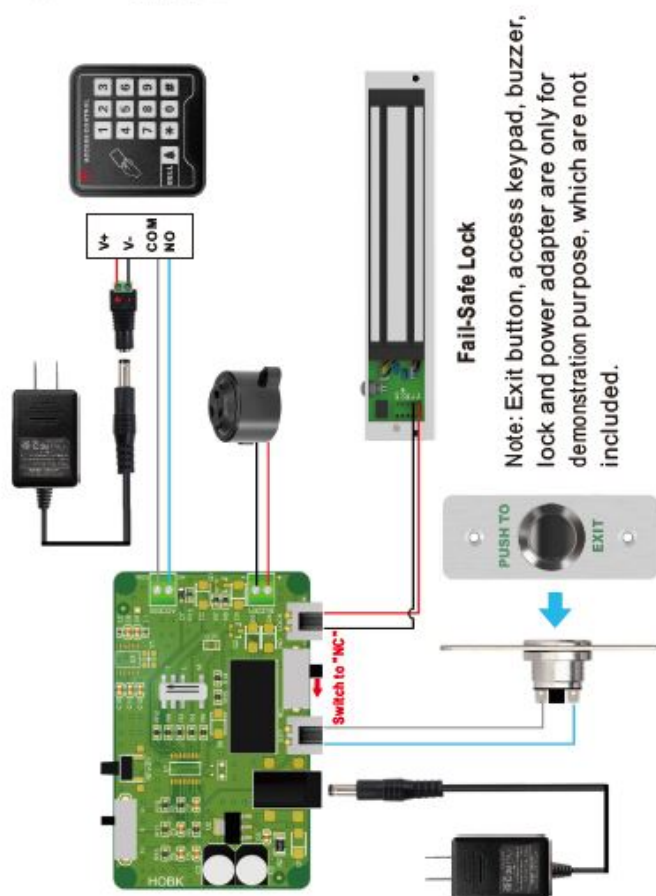
## WIRING DEMONSTRATION DIAGRAM

When connect fail secure Lock



## WIRING DEMONSTRATION DIAGRAM

When connecting Fail-Safe Lock



## TROUBLESHOOTING

1. Q: Why does not the transmitter's LED light up when I press the button on it?  
A.The battery power may be exhausted. Please replace the battery.
2. Q: Why can't the lock be unlocked after pressing the transmitter? Please check the issue by the following steps:  
a. Check whether the remote control receiver and transmitter are paired successfully.  
b. Check whether there is any metal object around the remote control receiver as it may shield the signal.
3. Q: Why can't the lock work properly when the wiring is correct?  
A: Please check whether the indicator of the receiver is on and the mode of lock is selected correctly. (For more details, please refer to "Lock Mode Select" in this manual.)


## FCC WARNING

This device complies with part 15 of the FCC Rules. Operation is subject to the following two conditions: this device may not cause harmful interference, and this device must accept any interference received, including interference that may cause undesired operation. Any changes or modifications not expressly approved by the party responsible for compliance could void the user's authority to operate the equipment.

**NOTE:** This equipment has been tested and found to comply with the limits for a Class B digital device, pursuant to Part 15 of the FCC Rules. These limits are designed to provide reasonable protection against harmful interference in a residential installation. This equipment generates, uses and can radiate radio frequency energy and, if not installed and used in accordance with the instructions, may cause harmful interference to radio communications. However, there is no guarantee that interference will not occur in a particular installation. If this equipment does cause harmful interference to radio or television reception, which can be determined by turning the equipment off and on, the user is encouraged to try to correct the interference by one or more of the following measures:

Reorient or relocate the receiving antenna. Increase the separation between the equipment and receiver. Connect the equipment into an outlet on a circuit different from that to which the receiver is connected. Consult the dealer or an experienced radio/TV technician for help,

## Documents / Resources

	<p><a href="#">UHPOTE HBK-R01 Remote Control Switch</a> [pdf] User Manual HBK-R01, HBKR01, 2A4H6HBK-R01, 2A4H6HBKR01, HBK-R01 Remote Control Switch, Remote Control Switch</p>
---	--