



UHPPOTE HBK-A02W Wi-Fi Door Access Control Keypad Proximity Card Reader User Manual

[Home](#) » [UHPPOTE](#) » UHPPOTE HBK-A02W Wi-Fi Door Access Control Keypad Proximity Card Reader User Manual 

Contents

- 1 UHPPOTE HBK-A02W Wi-Fi Door Access Control Keypad Proximity Card Reader
- 2 Product Information
- 3 Product Introduction
- 4 Operation Guide
- 5 Packing List
- 6 Introduction
- 7 Features
- 8 Specifications
- 9 Installation
- 10 Wiring Diagram
- 11 Wiring harness Connections
- 12 Sound and Light Indication
- 13 Operation Guide
- 14 Troubleshooting
- 15 FCC
- 16 Documents / Resources
 - 16.1 References



UHPPOTE HBK-A02W Wi-Fi Door Access Control Keypad Proximity Card Reader



Product Information

Product Name: UHPP HBK-A02W TE Access Control Keypad

User Manual: EN User Manual

Packing List:

Name	Quantity	Remarks
Access Keypad	1	
Connector with cable of 9-27/32	1	
User Manual	1	
Plastic Anchors	4	
Self – Tapping Screw	4	

Product Introduction

- This RFID card access control unit controls 1 door. It uses ST MCU to ensure stable performance, and low-power circuit makes the service life longer.
- OMRON power relay with 10A switching capacity provides an excellent switching performance for

electric locks.

- It is widely used in factories, houses, residential quarters, offices, mechanical and electrical control equipment and so on.

- **Specifications**

- **Operating Voltage:** 12VDC
- **Lock Output Load:** Max. 1.5A
- **Card Capacity:** 1000
- **Card Type:** Standard 125KHz EM
- **PIN Capacity:** 500
- **Door Open Time:** 0-99 seconds
- **Idle Current:** 50mA
- **Operating Humidity:** 10%-90%RH
- **Waterproof:** No
- **Enclosure Material:** ABS Plastic
- **Product Weight:** 3.53oz
- **Dimensions:** 4-21/64×2-51/64×29/32
- **WiFi Standard:** 2412-2462MHz

- **Installation**

- **Wall:** 2

- **Wiring Diagram – Common Power Supply Diagram**

- **POWER:** +12V GND
- **EXIT BUTTON:** – Fail-secure lock + – Fail-safe lock +
- **BELL:** +12V (RED) GND (BLACK) OPEN (YELLOW) PUSH (GREEN) NO (BLUE) COM (WHITE) NC (BROWN) BELL (PINK) BELL (PINK)

- **Wiring Diagram – Special Power Supply Diagram**

- **+12V:** GND
- **PUSH:** EXIT BUTTON NO
- **+ Fail-secure lock:** – COM NC
- **+ Fail-safe lock:** – BELL +12V (RED) GND (BLACK) OPEN (YELLOW) PUSH (GREEN) NO (BLUE) COM (WHITE) NC (BROWN) BELL (PINK) BELL (PINK)

- **Wiring Harness Connections:**

- **+12V:** RED
- **GND:** BLACK
- **OPEN:** YELLOW
- **PUSH:** GREEN
- **NO:** BLUE
- **COM:** WHITE
- **NC:** BROWN
- **BELL:** PINK

Sound and Light Indication

Operation Status	LED Indicator	Buzzer
Standby	White	Blue
PIN only mode	Red	Green
Another mode	Flash yellow	Blue
In the programming mode	Yellow	Flash green 1 time
When a menu is waiting to be selected	Flash blue	
The menu selected		
Unlock the lock		A short beep
Enter the PIN		A short beep 3 short beeps
Operation successful	Flash red 3 times	A short beep
Operation failed		Press digit key

Operation Guide

- **Purpose**

- The purpose of the operation guide is to provide instructions on how to use the access control keypad.

- **Operation**

- **Enter the programming mode:** # Admin Code #
- **Return to the previous menu in the programming mode:** *
- **Exit from the programming mode:** #

- **Basic Operation:**

- **Change the admin code:**
 - New Admin Code #
 - Repeat New Admin Code #
 - The admin code can be 4-8 digits.
- **Red Card:**
 - Read Card 1
 - Read Card 2
- Read Card N #

- **Add card users:**

- User ID Number # Read Card #

- **Add or change a PIN user:**

- **User ID Number # PIN #**
 - The user ID number is any 4-digit number from 0001 to 9999. Users can be added continuously by repeating the operation.
 - **Delete users:** User ID Number #
 - Users can be deleted continuously.

- **Delete all users 0000 #**

- **Attention:** Delete all PIN users & card users except the public code.
- **Set public code:** Public Code # Repeat Public Code #

- **Set open mode:** 0000 #

• FAQ

- **Q:** What is the default admin code?
- **A:** The default admin code is 123456.

Packing List

Name	Quantity	Remarks
Access Keypad	1	
Connector with cable of 9-27/32"	1	
User Manual	1	English
Plastic Anchors	4	Ø6mmx25mm, used for fixing
Self - Tapping Screw	4	Ø4mmx25mm, used for fixing

Introduction

- This RFID card access control unit controls 1 door. It uses ST MCU to ensure stable performance, and low-power circuit makes the service life longer.
- OMRON power relay with 10A switching capacity provides an excellent switching performance for electric locks.
- It is widely used in factories, houses, residential quarters, offices, mechanical and electrical control equipment and so on.

Features

- Full programming from the keypad.
- Supports Card, PIN, Card + PIN, Card or PIN.
- Can be used as a standalone keypad.
- Adjustable door open time.
- Very low power consumption.
- Lock output current short circuit protection.
- With bell function, supports external bell.
- Adopt the switch mode power supply (SMPS) solution.
- Built-in buzzer.
- Red, blue, white, yellow and green LED indicators display the working status.

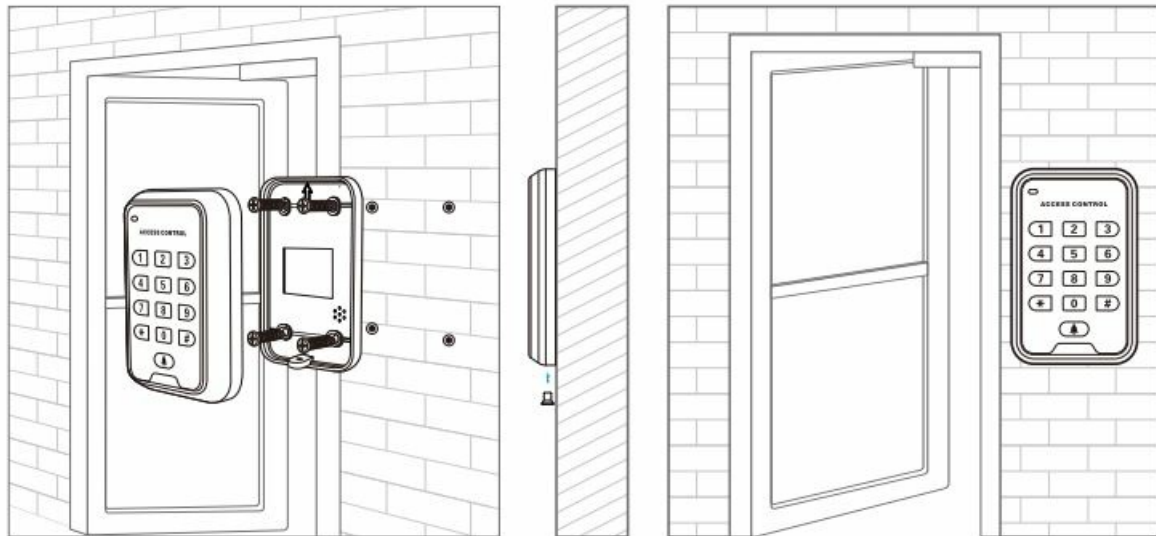
Specifications

Operating Voltage	12VDC	Lock Output Load	Max. 1.5A
Card Capacity	1000	Card Type	Standard 125KHz EM
PIN Capacity	500	Door Open Time	0-99 seconds
Card Reading Distance	Max. 6cm	Operating Temperature	-40°F-140°F
Idle Current	50mA	Operating Humidity	10%-90%RH
Waterproof	No	Enclosure Material	ABS Plastic
Product Weight	3.53oz	Dimensions	4-21/64"x2-51/64"x29/32"
WiFi Standard	2412-2462MHz		

Installation

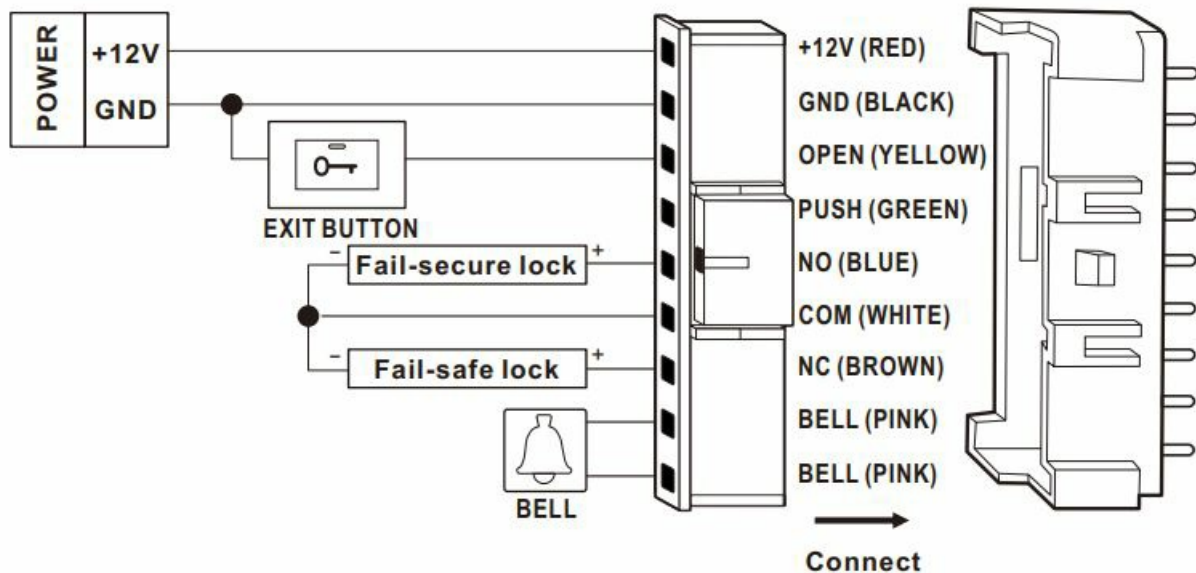
- Remove the back cover from the keypad
- Drill 4 holes on the wall for the self-tapping screws and 1 hole for the cable
- Put the supplied plastic anchors into the 4 holes
- Fix the back cover firmly on the wall with 4 self-tapping screws
- Thread the cable through the cable hole
- Attach the keypad to the back cover.

Wall

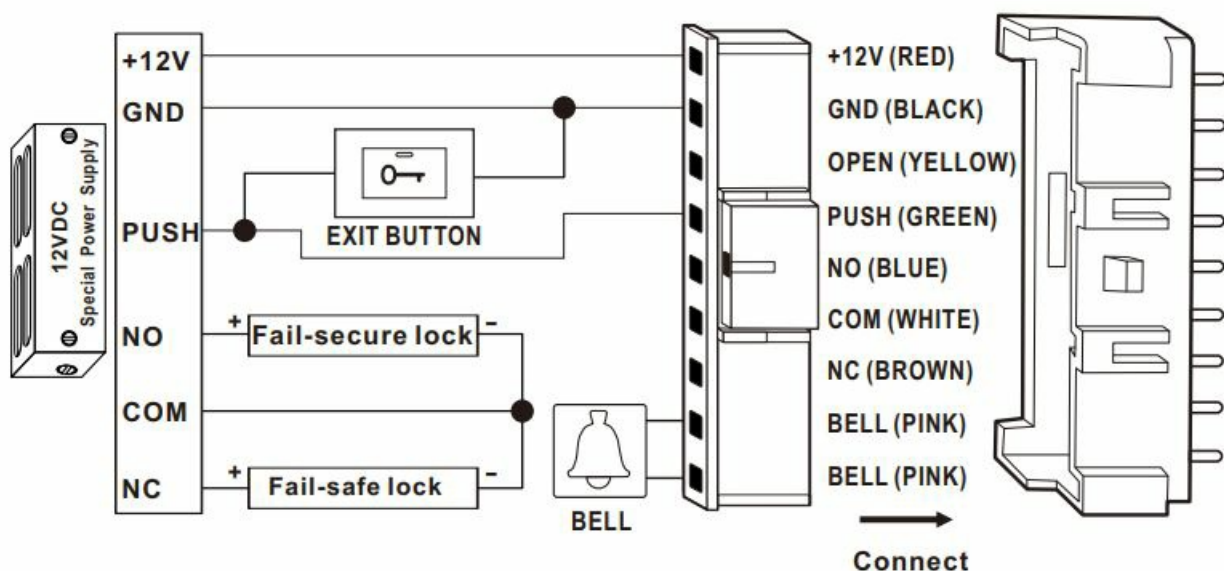


Wiring Diagram

Common Power Supply Diagram



Special Power Supply Diagram



Wiring harness Connections

- **+12V:** RED
- **GND:** BLACK
- **OPEN:** YELLOW
- **PUSH:** GREEN
- **NO:** BLUE
- **COM:** WHITE
- **NC:** BROWN
- **BELL:** PINK

Sound and Light Indication

Operation Status		LED Indicator	Buzzer
Standby	PIN only mode	White	
	Other mode	Red	
Press #		Flash yellow	
Press # #		Yellow	
In the programming mode	When a menu is waiting to be selected	Flash blue	
	The menu selected	Blue	
Unlock the lock		Green	A short beep
Enter the PIN		Blue	
Operation successful		Flash green 1 time	A short beep
Operation failed		Flash red 3 times	3 short beeps
Press digit key			A short beep

Operation Guide

Purpose	Operation	Remarks
Enter the programming mode	# <input type="text" value="Admin Code"/> #	The default admin code is 123456.
Return to previous menu in the programming mode	#	
Exit from the programming mode	*	

The following operations must be done in the programming mode				
Basic Operation				
Change the admin code	0	New Admin Code # Repeat New Admin Code #	The admin code can be 4-8 digits.	
Add users	1	0 Read Card 1 Read Card 2 Read Card N #	Add card users	
		1 User ID Number # Read Card #	Add a card user with ID number	
		2 User ID Number # PIN #	Add or change a PIN user	
		The user ID number is any 4-digit number from 0001 to 9999. Users can be added continuously by repeating the operation.		
Delete users	2	0 Read Card 1 Read Card 2 Read Card N #	Users can be deleted continuously.	
		1 User ID Number #	The cards can be deleted when broken or lost.	
		2 8 digits or 10 digits card number #	For example, the card number is 0006307890 09616434, can input 0006307890 or 09616434.	
		3 0000 #	Delete all users. Attention: Delete all PIN users & card users except the public code.	
Set public code	3	Public Code # Repeat Public Code #	Support one set public code which can be used to open the door in any open mode.	
		0000 #	Delete the public code	
Set open mode	4	0 #	Entry is by either Card or PIN (Default)	
		1 #	Entry is by Card and PIN together	
		2 #	Entry is by PIN only	
		3 #	Entry is by Card only	
Set open time	5	XX #	XX can be any number from 0 to 99.	
Advanced Application				
6	1	XX #	Set Multi-cards to open	XX is any number from 1 to 10. Only for Card Only mode.
		The door will open only when the quantity of valid cards read .		
	2	1 Read Card #	Set admin add card	Support one admin add card and one delete card each.
		2 Read Card #	Set admin delete card	
		0 #	Delete admin cards	
9	#	WiFi match		
Alarm Setting				
7	1	0 #	Set anti-tamper alarm	OFF (Default)
		1 #		ON

System Setting				
8	1	0 #	Set keypad output mode	Set to Normal Mode. The door will locked automatically after an unlock operation.
		1 #		Set to Toggle Mode. The door will keep unlocking until next unlock operation.
Optional Setting				
9	1	0 #	Set Sounds	ON (Default)
		1 #		OFF
	2	0 #	Set keypad backlight	ON (Default)
		1 #		OFF
		2 #		Auto Mode
Remark: All code can be 4 to 8 digits long except every as zero.				
The following operations must be done out of programming mode				
Set the code of an added card		# # Read an Added Card PIN # Repeat PIN #		
Reset to default admin code		1. Disconnect the power. 2. Press 00 # within 5 seconds after the HBK-A02W is powered on.		Reset the admin code to 123456.
Reset to default setting		1. Disconnect the power. 2. Press 99 # within 5 seconds after the HBK-A02W is powered on.		Reset the device to the factory default settings.
Unlock the Door				
For a PIN user		Input PIN , then press #		
For a Card user		Read Card		
For a Card and PIN user		Read Card (the LED indicator flashes green), then input PIN #		

Troubleshooting

- **Q:** Why can't the door be unlocked after I swipe an added card?
 - **A:** Please check whether you have set the door open mode to entry by PIN only.
- **Q:** Why is there no sound when I press the numeric keypad
 - **A:** Please check whether you have disabled the buzzer. If yes, please enable the buzzer according to the operation guide.
- **Q:** Why there are 3 short beeps when I try to add a card user in the programming mode?
 - **A:** This card has been added already.
- **Q:** Why isn't the door unlocked when the LED indicator keeps flashing green after I swipe the added card?
 - **A:** You have set the door open mode to entry by Card and PIN, please unlock the door by using your card and PIN together.
- **Q:** How to replace the card that corresponds to a certain user ID number?
 - **A:** Please delete this user ID number first and then re-add it.

Tuya Smart APP Operation Guide

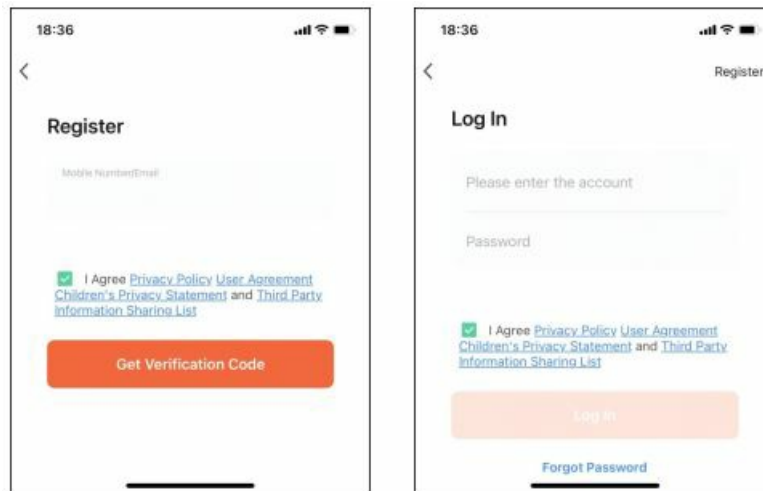
1. Download Tuya Smart APP

- Search 'Tuya Smart' in the Apple Store for the iOS version or Google Play for the Android version.



2. Registration and Login

- Tap 'Register' on the top-right corner, then input a valid mobile number or email address and tap 'Get Verification Code'.
- Enter the verification code set the password, and tap 'Done'.

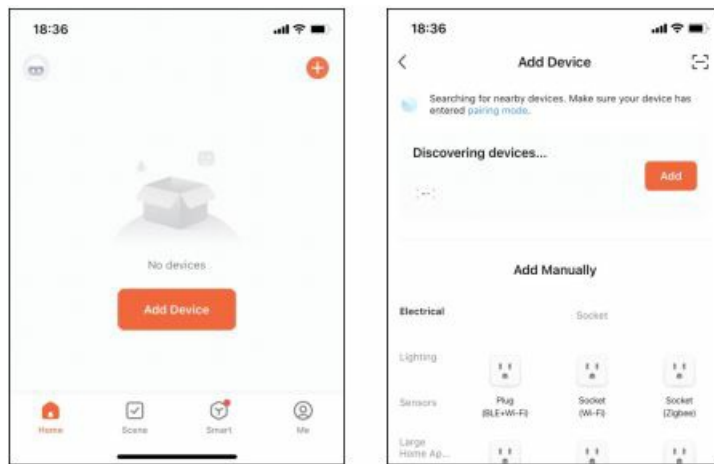


3. WiFi Matching

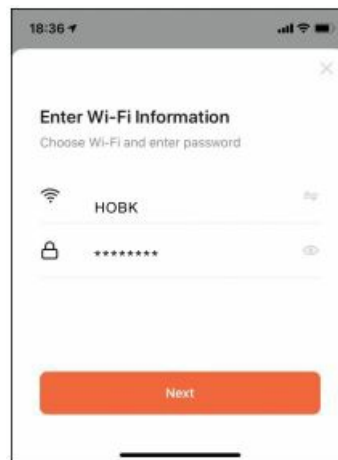
- Step 1.** Press #admin code#69# on HBK-A02W to start wifi matching.



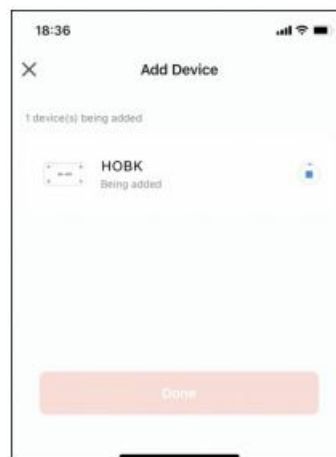
- Step 2.** Tap 'Add Device' on the home page of the Tuya app followed by tapping 'Add' to enter Wi-Fi information.



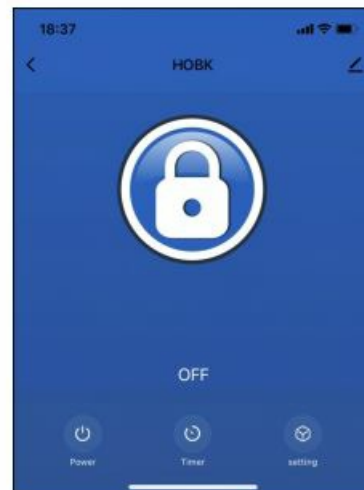
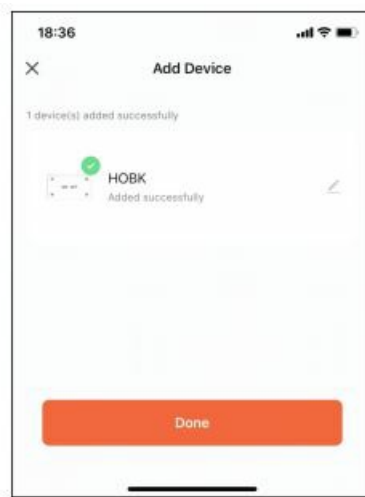
- **Step 3.** Choose Wi-Fi and enter a password.
 - The Wi-Fi must be the same as the phone connecting, otherwise it will cause offline problems.
 - The Tuya Smart only supports 2.4GHz Wi-Fi communication protocol and can't support 5GHz.



- **Step 4.** The Tuya Smart app will search for nearby devices and connect to the HBK-A02W.



- **Step 5.** Name the added device.



FCC

FCC Warning

FCC ID: 2A4H6HBK-A01

This device complies with part 15 of the FCC Rules.

Operation is subject to the following two conditions:

1. this device may not cause harmful interference, and
2. this device must accept any interference received, including interference that may cause undesired operation.

Any changes or modifications not expressly approved by the party responsible for compliance could void the user's authority to operate the equipment.


NOTE: This equipment has been tested and found to comply with the limits for a Class B digital device, under Part 15 of the FCC Rules. These limits are designed to provide reasonable protection against harmful interference in a residential installation. This equipment generates, uses and can radiate radio frequency energy and, if not installed and used following the instructions, may cause harmful interference to radio communications. However, there is no guarantee that interference will not occur in a particular installation. If this equipment does cause harmful interference to radio or television reception, which can be determined by turning the equipment off and on, the user is encouraged to try to correct the interference by one or more of the following measures:

- Reorient or relocate the receiving antenna.
- Increase the separation between the equipment and the receiver.

- Connect the equipment to an outlet on a circuit different from that to which the receiver is connected.
- Consult the dealer or an experienced radio/TV technician for help.

To maintain compliance with FCC’s RF Exposure guidelines, This equipment should be installed and operated with a minimum distance between 20cm of the radiator and your body: Use only the supplied antenna. 2023 HOBK Electronic Technology Co., Ltd All rights reserved >75% recycled paper.

Documents / Resources

	<p>UHPPOTE HBK-A02W Wi-Fi Door Access Control Keypad Proximity Card Reader [pdf] User Manual</p> <p>HBK-A02W Wi-Fi Door Access Control Keypad Proximity Card Reader, HBK-A02W, Wi-Fi Door Access Control Keypad Proximity Card Reader, Door Access Control Keypad Proximity Card Reader, Control Keypad Proximity Card Reader, Keypad Proximity Card Reader, Proximity Card Reader, Card Reader, Reader</p>
---	---

References

- [User Manual](#)